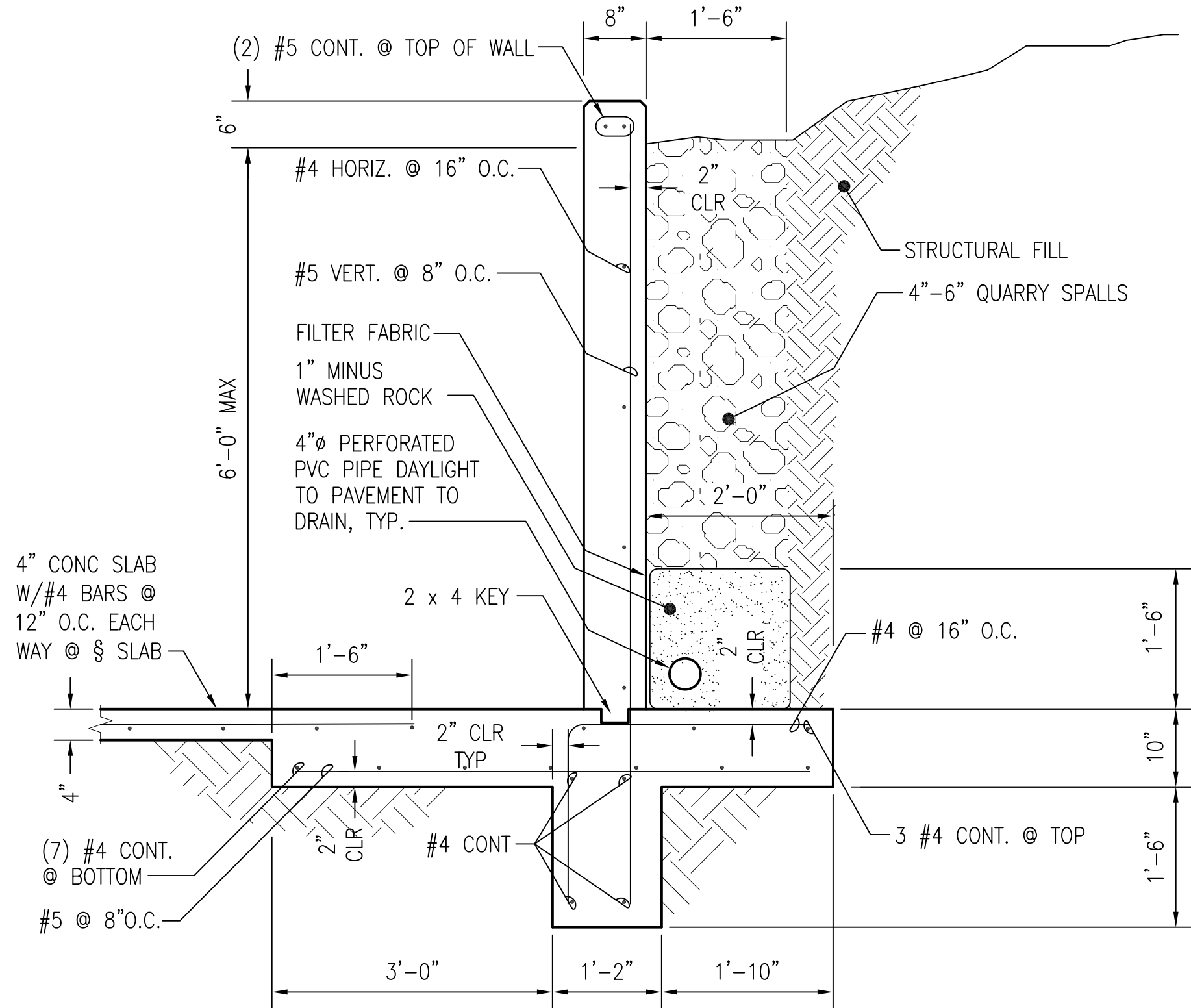
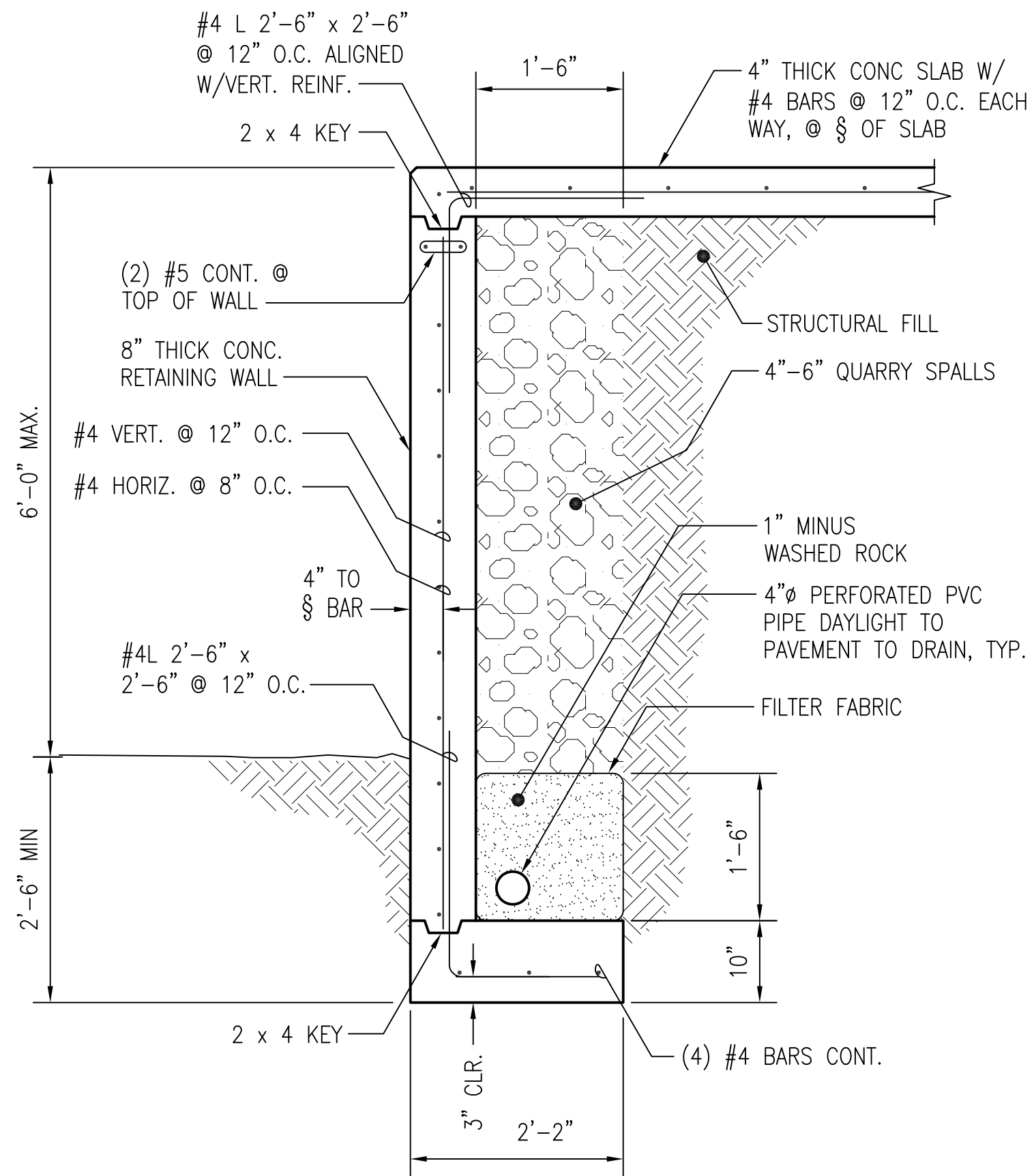


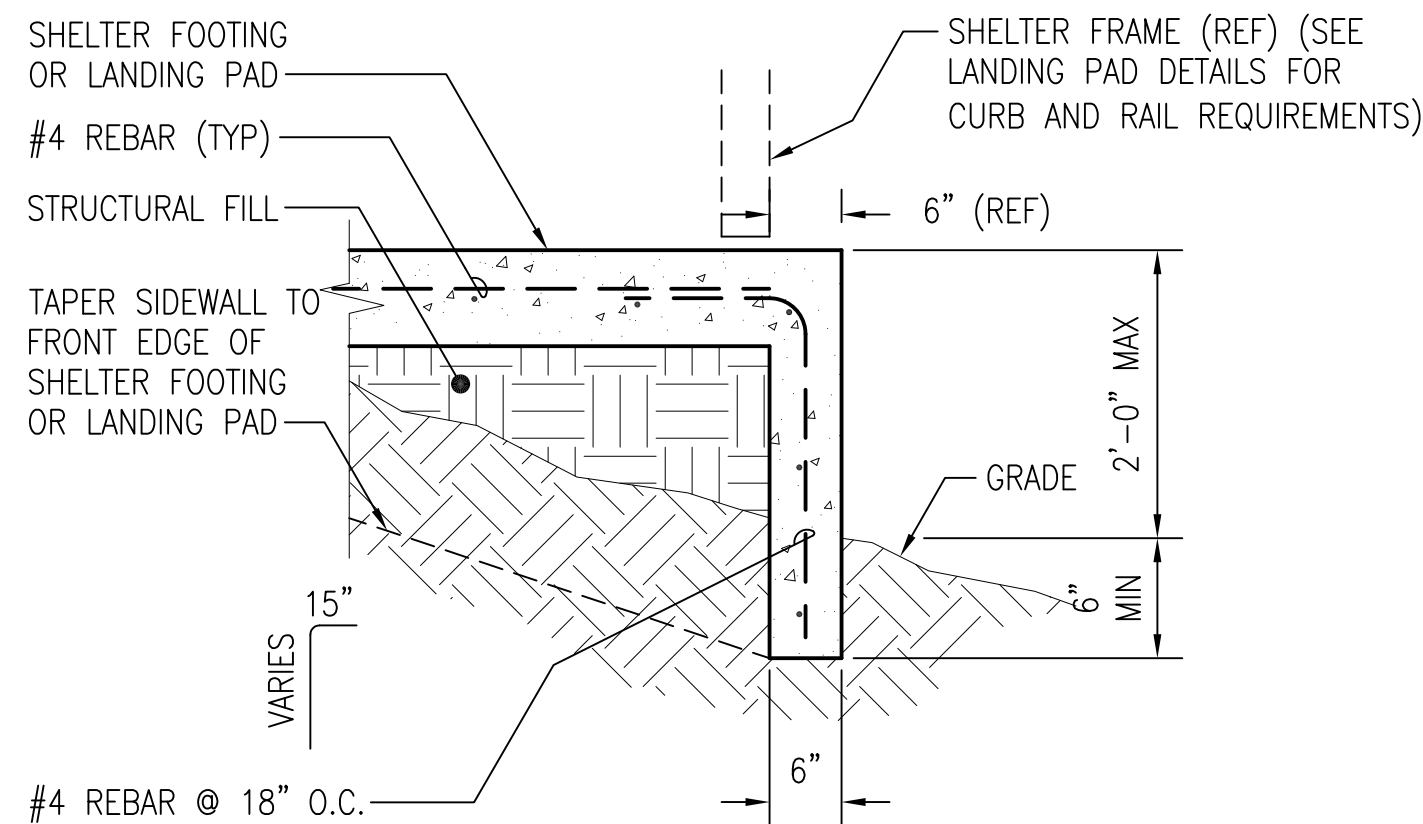
SECTION 1
SCALE: 3/4"=1'-0"



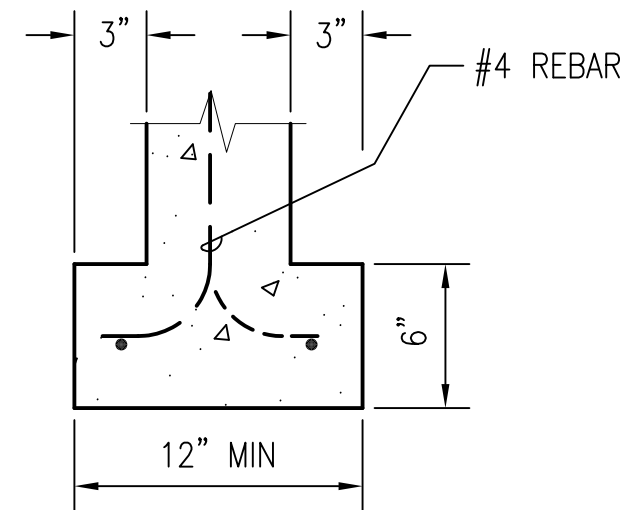
SECTION 3
SCALE: 3/4"=1'-0"



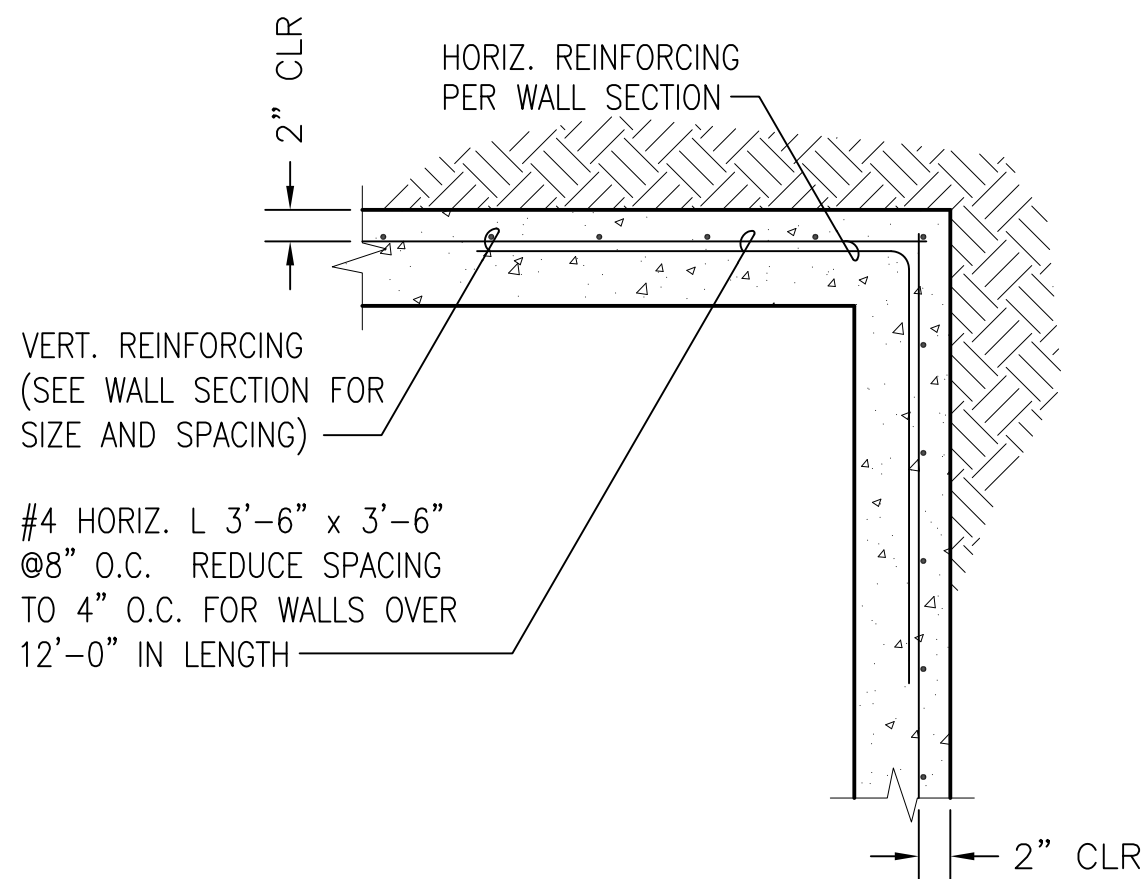
SECTION 5
SCALE: 3/4"=1'-0"



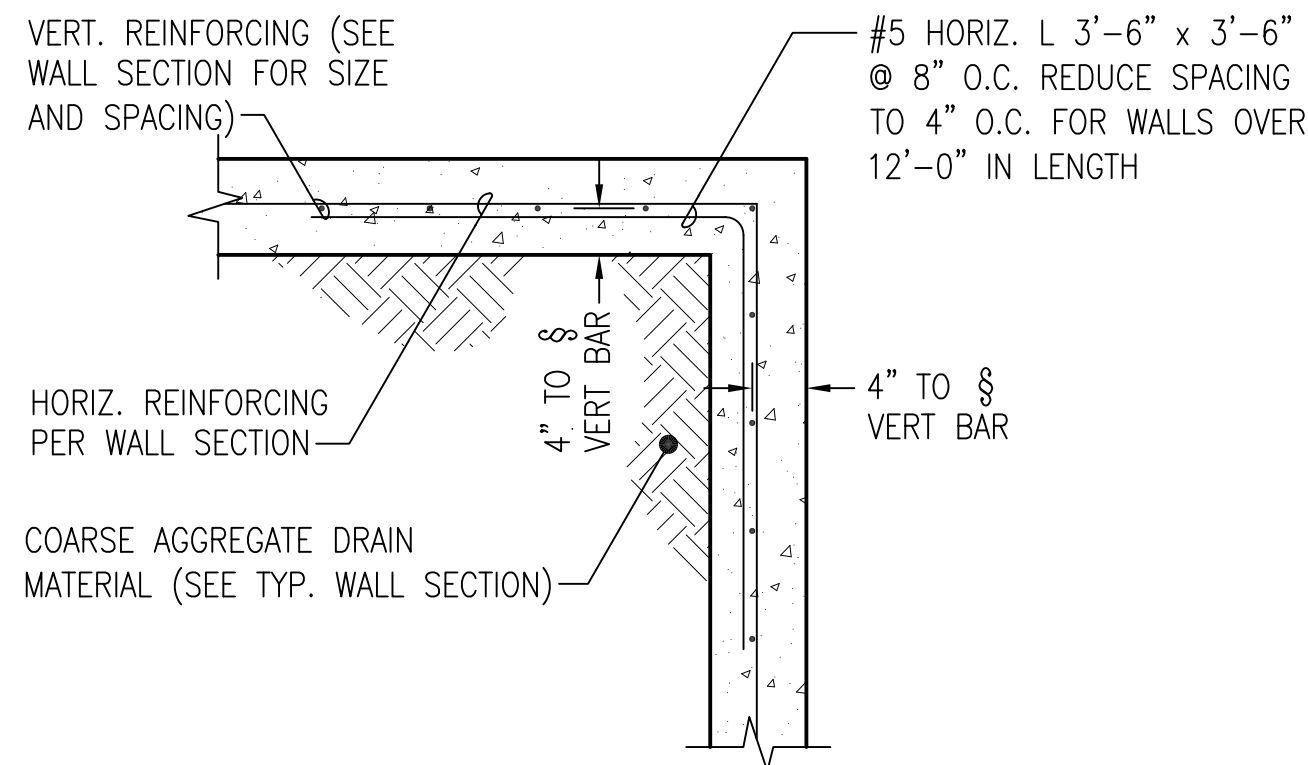
SECTION 2
SCALE: 3/4"=1'-0"



DETAIL A
SCALE: 1 1/2"=1'-0"



SECTION 4
SCALE: 3/4"=1'-0"



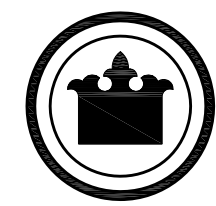
SECTION 1
SCALE: 3/4"=1'-0"

| | | | | |
|-----|----------|----|-------|------|
| △ | | | | |
| △ | | | | |
| △ | | | | |
| △ | | | | |
| △ | | | | |
| No. | REVISION | BY | APP'D | DATE |

NOT FOR
CONSTRUCTION

| | |
|--------------|------------|
| DESIGNED: | C. ASQUITH |
| DRAWN: | H. SCHMITT |
| RECOMMENDED: | D. CRIPPEN |
| APPROVED: | R. ISLER |

| | |
|--------------|-----------|
| CHECKED: | P. ENG |
| SCALE: | NOTED |
| CONTRACT NO: | C00256C07 |



King County

Department of Transportation - Transit Division
STANDARDS FOR CONSTRUCTION
OF TRANSIT PASSENGER FACILITIES
**FOOTING SECTIONS AND
COUNTERFORT SECTIONS
AND DETAILS**

| | |
|--------------|--------|
| DATE: | JAN 08 |
| FILE NO: | D104C |
| DRAWING NO: | D104 |
| SHEET NO: OF | 4 12 |

ONE INCH
AT FULL SIZE, IF NOT ONE
INCH SCALE ACCORDINGLY