

Techniques, Triage and Lessons Learned for Landscape Scale Knotweed Control



Judy Blanco, Cedar River Restoration Coordinator, **Cascade Land Conservancy**

Presented at the Puget Sound Knotweed Forum October 31, 2011



The Halloween part first....

The Wilderness Child
Food, Health, Spirituality & Nature

Home About Me Herbs and Spices Recipes BoardPost

Sunday, May 16, 2010

Knotweed, A Delicious Pest

There's only one plant I... of that is as annoying to dandelions, and that's Ja Knotweed. This bamboo plant has become very s in many parts of the US, degree that it's being lab "invasive." Indeed, it is, I not a bad thing, if only p would realize just how u pest is. And it's good for You can just imagine my to learn I have a HUGE c available to me down by creek. It just sort of sho

and hopefully it's here to stay.

It really is a pretty plant when you take the time to look. Green, speckled with burgundy, large oval leaves, and lovely little, creamy white flowers in late sum

While the roots are troublesome, damaging foundations, roads, flood defenses and the like, the flowers are sometime prized by beekeepers as an important nectar. Knotweed flowers at a time when little else blooms. The honey product knotweed is similar to buckwheat honey, though not quite as strong.

Knotweed Cobbler

Knotweed Cobbler

Ingredients:
4 cups knotweed, sliced into rings
3/4 cup sweetener (optional but recommended)
1/4 cup shredded coconut
1/4 cup coarse pecan/nut flour
3 tbsp butter, melted
1/8 tsp cinnamon
1/8 tsp nutmeg

Start by cooking down your knotweed in a pot over medium heat. You don't need to add water since knotweed contains enough on its own. Just put it in the pot, add your sweetener, and stir it occasionally until it cooks down into a compote.

Add your compote to a buttered baking dish. In a separate bowl mix together your coconut, nut flour, melted butter, cinnamon and nutmeg. It should stick together in a crumbly mixture. Sprinkle this over your knotweed mixture. Bake at 350 degrees for 30 minutes.

This dessert is wonderful served warm with a side of vanilla ice cream, but I found it to be just as tasty served cold all by itself.

Japanese knotweed is quickly becoming one of my favorite foods. It's a plant that tastes sweet like fruit, it's abundant, it's good for you, and it grows quickly- as much as 3 to 4 meters in a matter of weeks. Rest assured, there will be more recipes with knotweed in the future. How much more I'll get this season with the deep freeze is unknown, but at least I have yet another crop to look forward to each spring.

Knotweed has found itself a plant of interest to the health food industry as well, being a fantastic

July (8)
June (7)
May (7)
Forest Folk
Fiddleheads with Walnuts & Fennel
Knotweed, A Delicious Pest
My First Crop Mob
I Started A Farm
Dandelion Fritters
Beltaine, Florida, Goat Cheese & Honey
April (7)
March (9)
February (8)
January (4)
2009 (26)

Tropical Traditions
COCONUT OIL
PLEASE USE MY
REFERRAL ID:
6618760

SAVE 15%
on
Mother's Day Gifts
Buy Now

Blackbird
Naturals

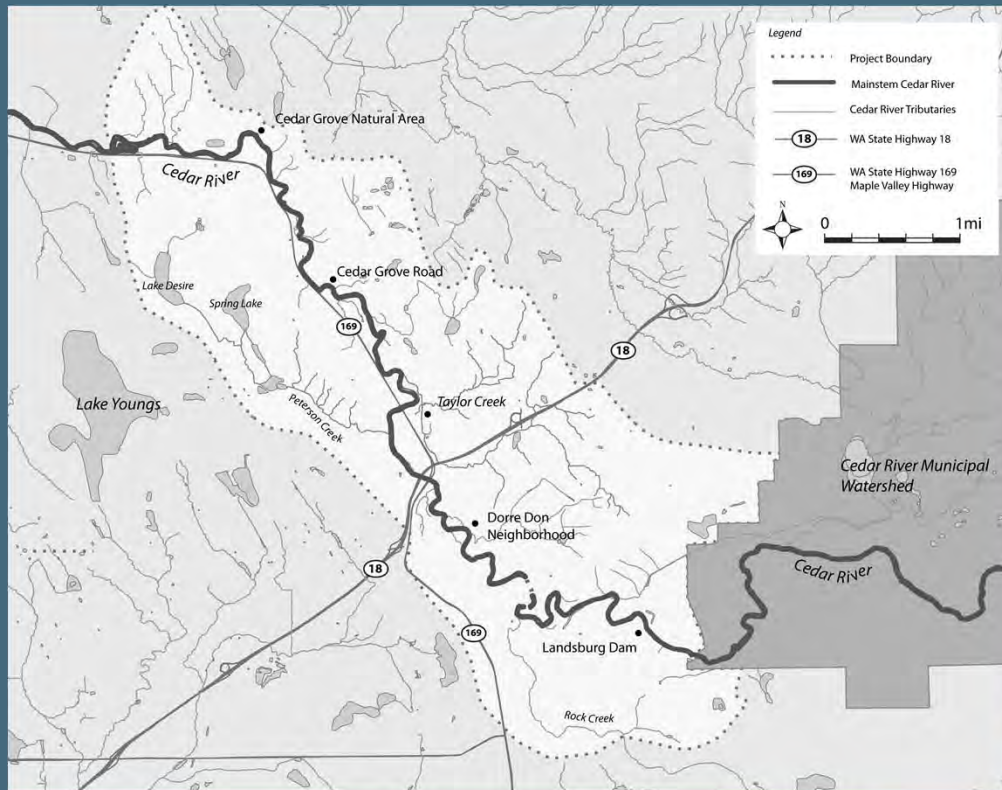
Search

http://2.bp.blogspot.com/_U643MZtC1M/S_BaZLjuU/AAAAAAAAAQ/nQEVlcK3rV/s1600/Knotweed+cooking.jpg

Stewardship Department Cedar River

5:04 PM
10/28/2011

Cedar River Restoration



**Landscape scale,
coordinated approach**

**Knotweed control, replanting
on public and private property**

Volunteer & education events



Friends of the
Cedar River
Watershed

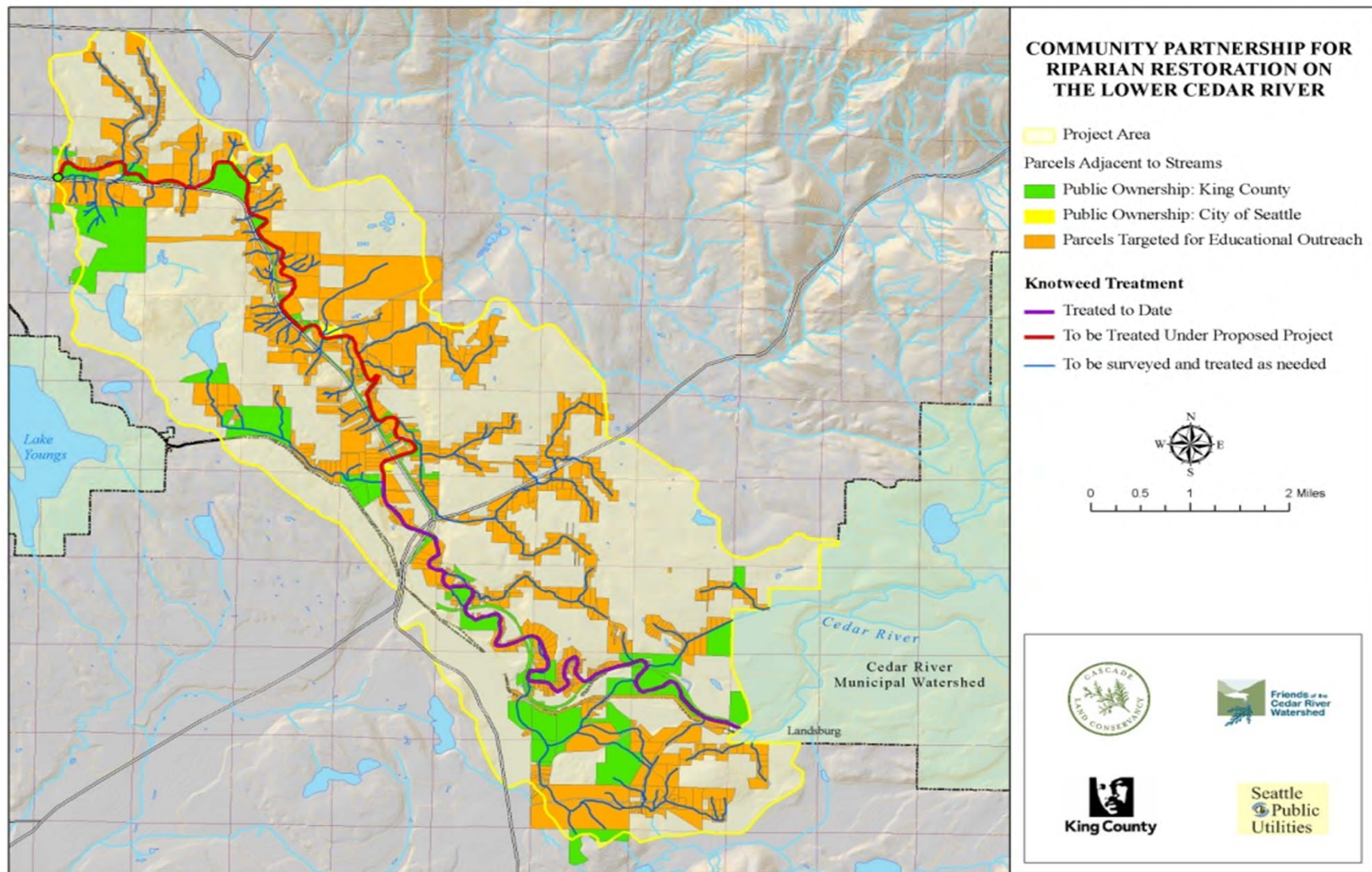


City of Seattle

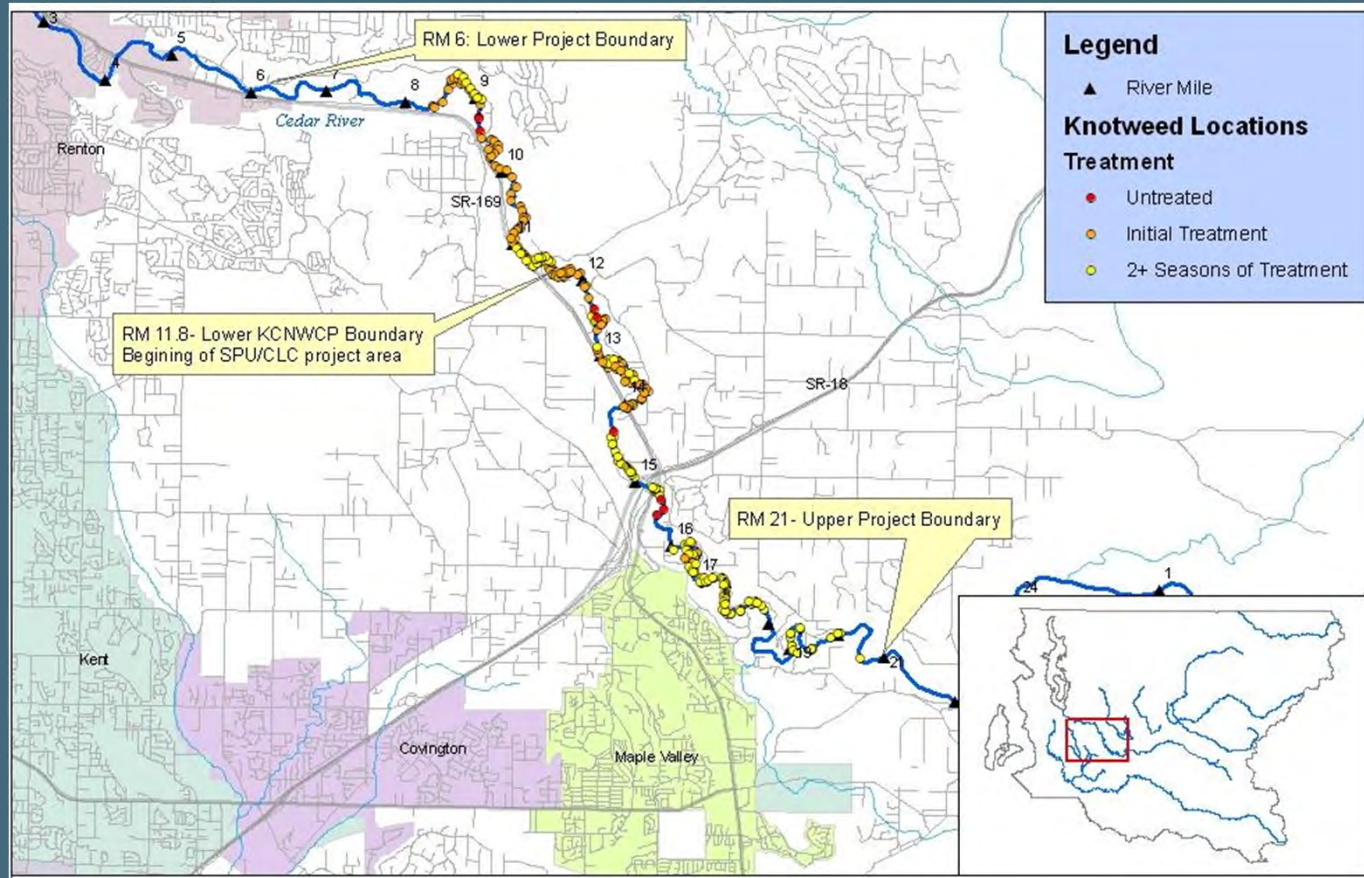


King County

Lower Cedar River Stewardship in Action Partnership, est. 2010



Coordinated Knotweed Control & Riparian Revegetation



- Knotweed treatment along 16 river miles
- Cooperative partnerships with landowners throughout project area
- 25 acres planted, public and private property
- 11,200 plants installed by 2011. 4,250 on private property
- 26 Volunteer events and 4 community workshops per year



Knotweed Control on the Cedar: Adaptive Management in Action

- King County Noxious Weed Control Program
- King County Rivers and Floodplain Management
- King County Dept. Natural Resources and Parks
- Cascade Land Conservancy
- Seattle Public Utilities
- Applied Ecology
- Washington Conservation Corps
- EarthCorps
- Hundreds of private landowners

And joining us next year:

- Friends of the Cedar River Watershed
- City of Renton



Knotweed Control Project Management



STEWARDSHIP in ACTION

Do you Have Knotweed Woes?

We Are Here to Help!

Knotweed is a Menace That Destroys Property and Habitat

Knotweed Removal
Knotweed is an aggressive invasive plant that destabilizes shorelines, putting property at risk. Where knotweed is established, no other plant species can grow. Knotweed dies back in the winter exposing bare stream banks to the elements. Not only that, fish and wildlife are deprived of shelter, food, and habitat.



Knotweed Takes Over Where Ever It Grows

Model Landscaping
We provide FREE design consultations and planting assistance to create attractive and functional landscaping to replace knotweed infestations with plants that are good for people, property, fish, and wildlife.



Thriving Native Plants After One Year of Growth

Neighbor to Neighbor
By coordinating neighbors who are interested in providing treatment and replanting support, we will be able to get knotweed under control!



The projects targets properties from Cavanaugh Pond and Landsburg Dam

2011 WORKSHOPS

KNOTWEED REMOVAL 101
NEIGHBOR-TO-NEIGHBOR
JUNE 25TH 1PM-4PM

PLANTING AND MULCHING
OCTOBER 15TH 10AM-1PM

ALL 2011 WORKSHOPS TAKE PLACE AT THE CEDAR RIVER GRANGE 22531 SR 218-KING OF MOUNTAIN VALLEY

Friends of the Cedar River Watershed

www.cedarriver.org

This publication was made possible by USEPA grant PO-0009401. It is the responsibility of the grantee and does not necessarily represent the official views of the USEPA. Further, USEPA does not endorse the purchase of any commercial products or services mentioned in this publication.





CLC Project Area Characteristics

Contiguous infestations (solid knotweed!)

Mix of public and private lands

Potential high-quality off-channel refuge areas



The image displays two side-by-side maps of a residential area. The left map is a grayscale aerial photograph with yellow property boundaries and a blue line representing a creek. The right map is a color aerial photograph of the same area, showing trees and buildings. Both maps include property owner names, a north arrow, and a scale bar. A red '16' is marked on the creek in both maps.

Property Owners (Left Map):

- MAYHALL KERRY
- TH SEATTLE SADDLE CLUB
- MAYHALL KURT J+KERRY A
- PETERSON HOWARD
- LANGDAHL MILES D+DONNA L
- PECK CHARLES E JR
- DAVISON LINDA R
- DAVISON LINDA R
- STOUT PHILIP S+LORRIE E
- DAVISON LINDA R
- WILEY JIM
- SOWARD S MELVIN J
- BO SNAKE JUDYANN
- SOWARD S MELVIN+CLAUDIA
- BO SNAKE JUYANN
- BILL MATTHEW A+KATH
- DORRE DON CO
- FIFER GILB HO
- VA
- BROOKINS
- SIMON JACK F GRAHAM BERTHA N+R
- ROGERS RANDALL H
- ROGERS RANDALL H
- KING COUNTY
- KING COUNTY
- KING COUNTY
- KING COUNTY

Property Owners (Right Map):

- CULHANE JOHN J
- MURRAY DAVID S BEN SHINE BARRY J+ANDRIA C
- RAHNAH DONALD E+MAY E+LEN
- VANVLECK MAX E+JAYNE L
- VANVLECK MAX E+JAYNE L
- HORROCKS LAURIE
- WILEY JIM
- SOWARD S MELVIN J
- BO SNAKE JUDYANN
- SOWARD S MELVIN+CLAUDIA
- BO SNAKE JUYANN
- BILL MATTHEW A+KATHRYN M
- DORRE DON COMMUNITY CLUB
- FIFER GILBERT R
- HOWLETT ELLEN
- VALE HELEN D
- BROOKINS THOMAS
- SIMON JACK F GRAHAM BERTHA N+ROBERT N
- ROGERS RANDALL H
- ROGERS RANDALL H
- KING COUNTY
- KING COUNTY
- KING COUNTY
- KING COUNTY

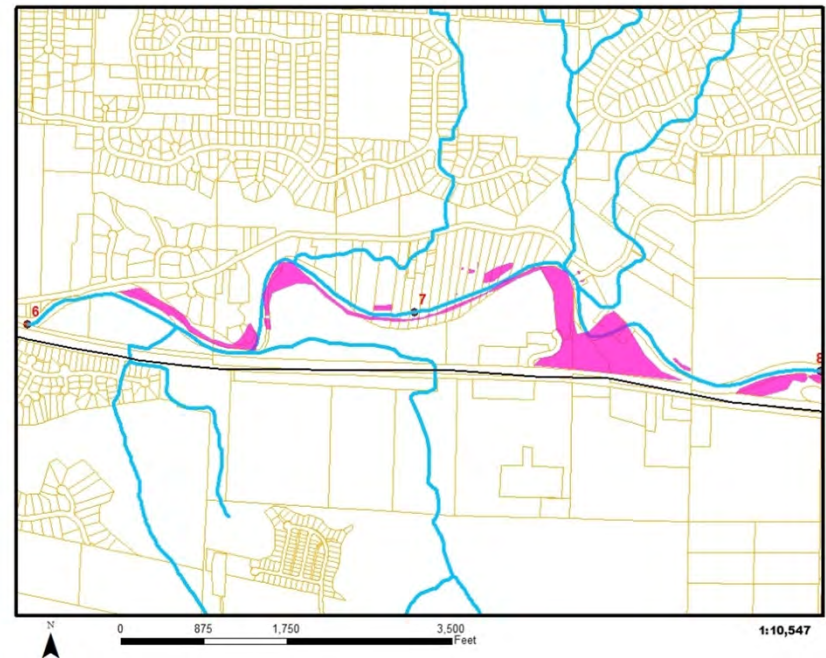
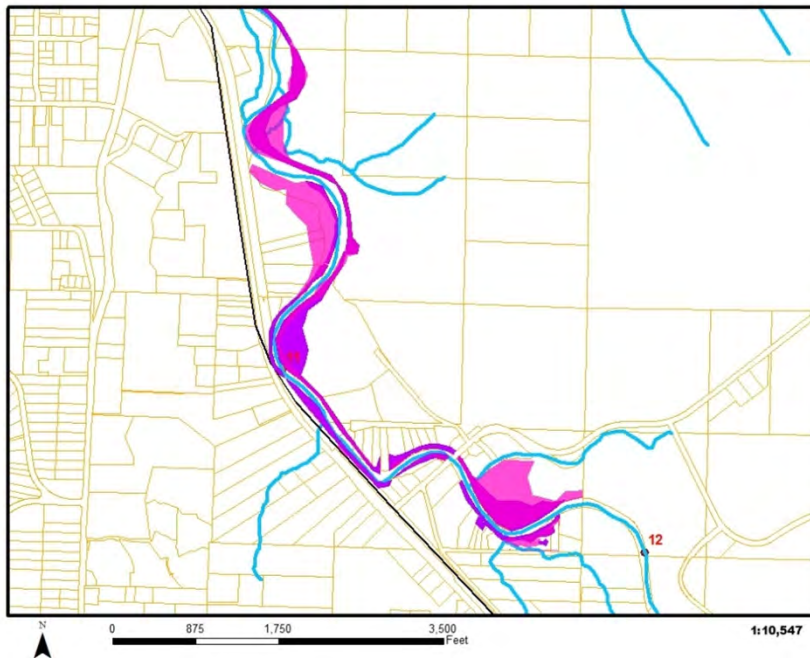
Scale and Orientation:

- North arrow pointing up.
- Scale bar: 0 to 650 feet (left map), 0 to 640 feet (right map).
- Red '16' marking on the creek.

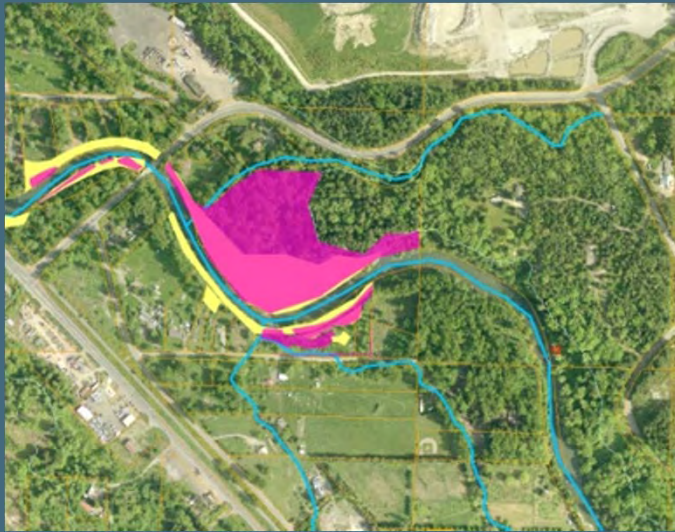
2009



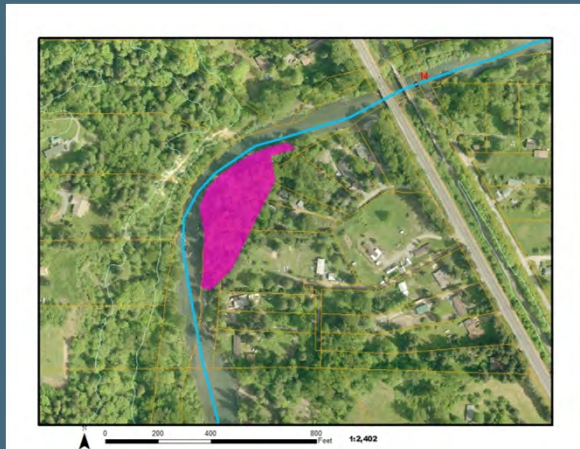
Treatment Strategy



Methods



Methods



Results



Replanting



Thank you

