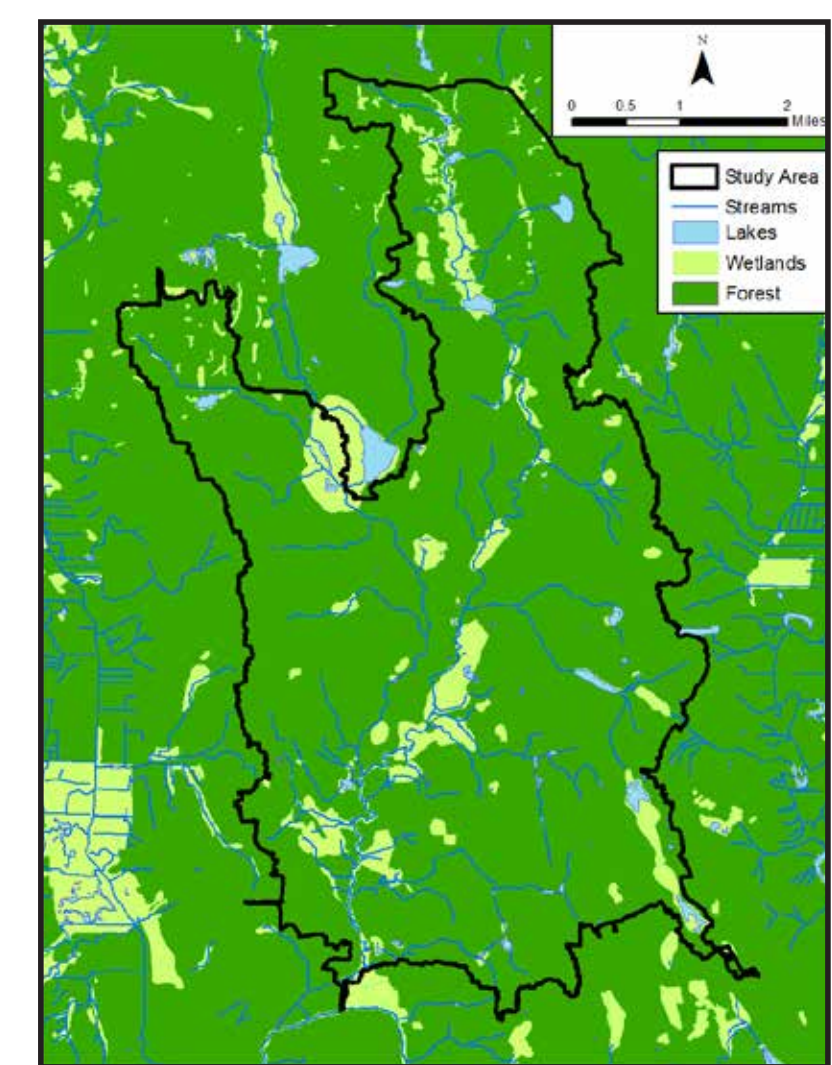
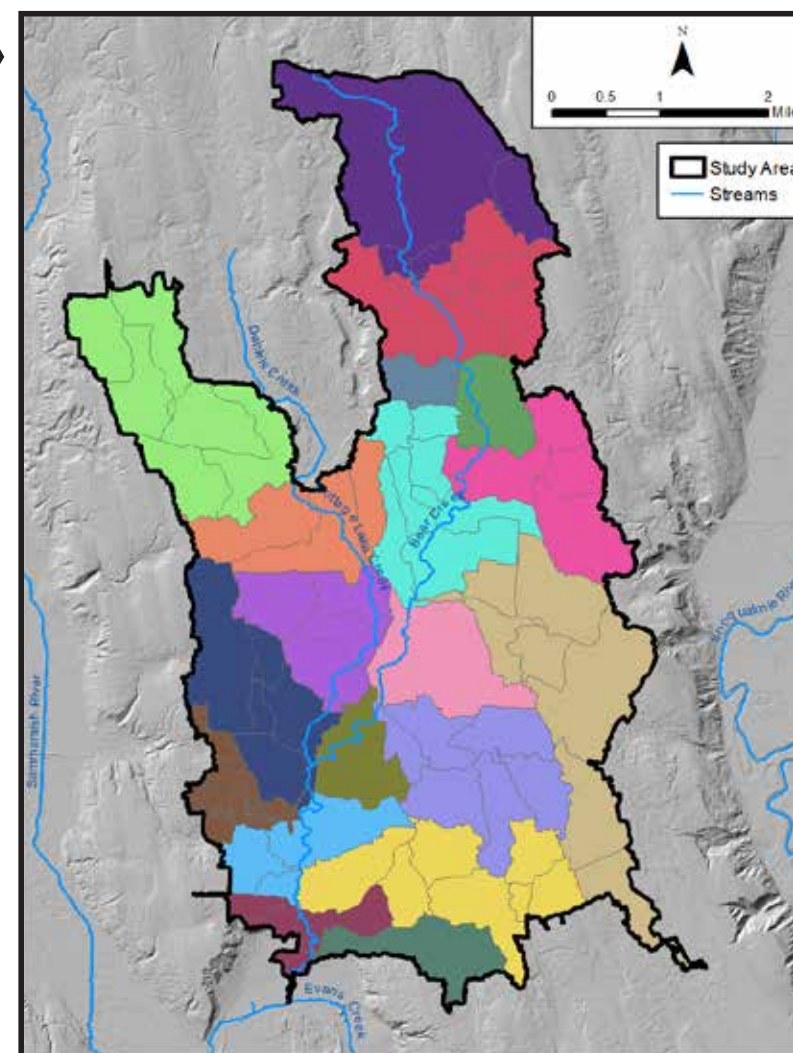


HSPF and SUSTAIN Watershed Modeling

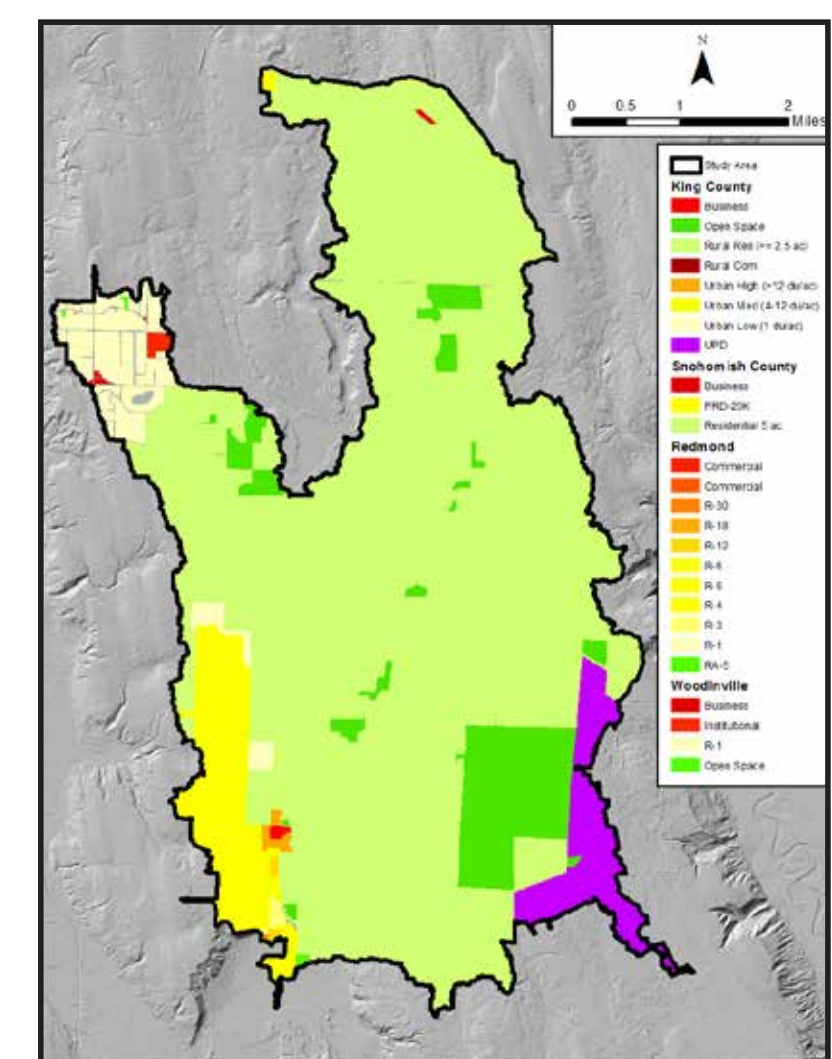
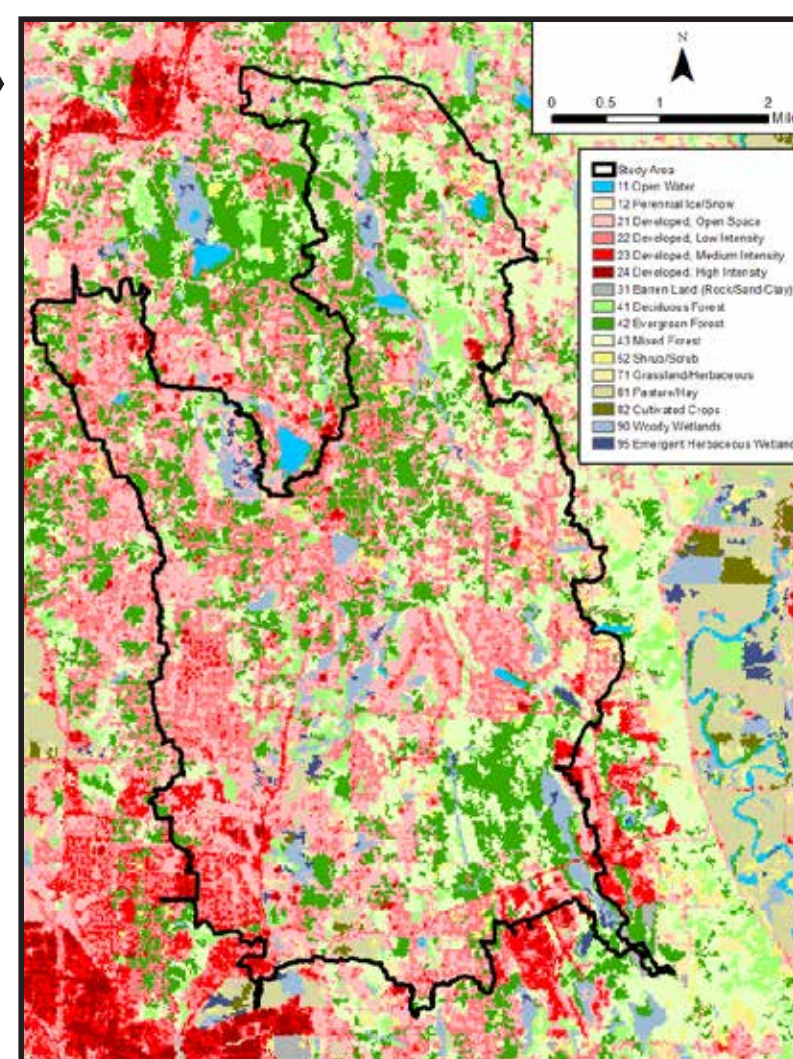
MODELING INPUT EXAMPLES

Model Domains
Study area includes Bear Creek and lands that drain to Bear Creek above the confluence with Evans Creek, excluding the Cottage Lake drainages.

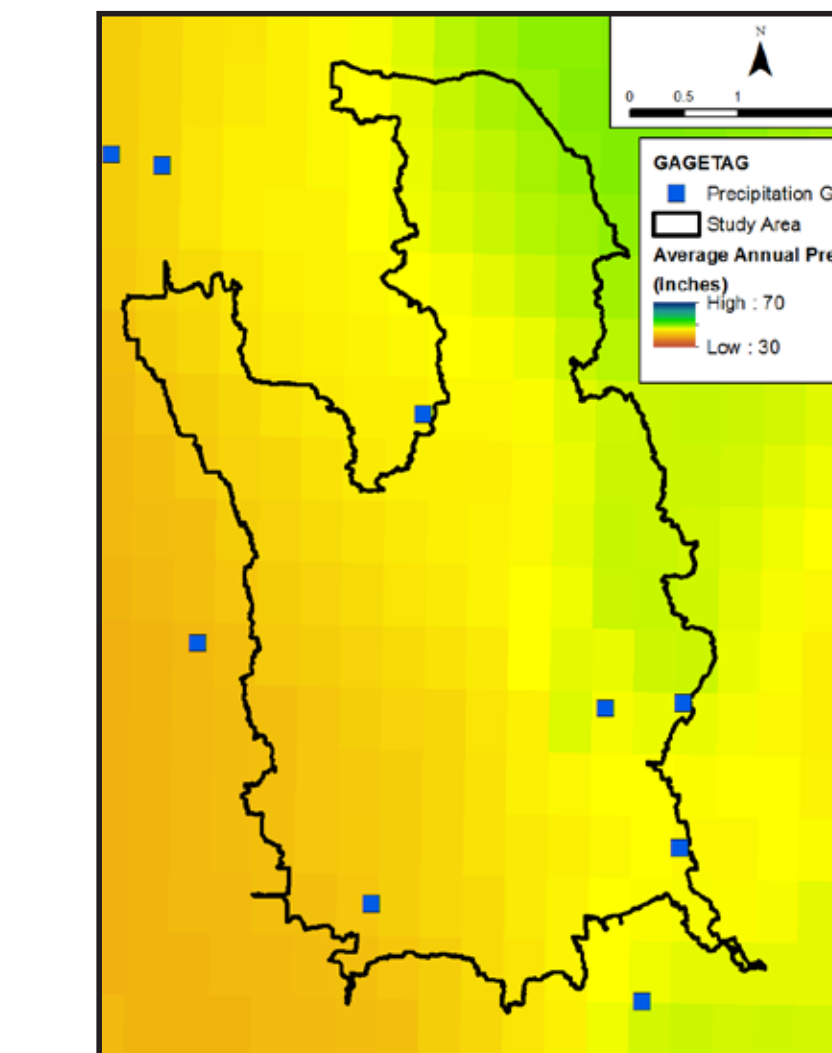


Forested
Total forest cover with known existing wetlands used to characterize pre-development conditions representing idealized state of the watersheds.

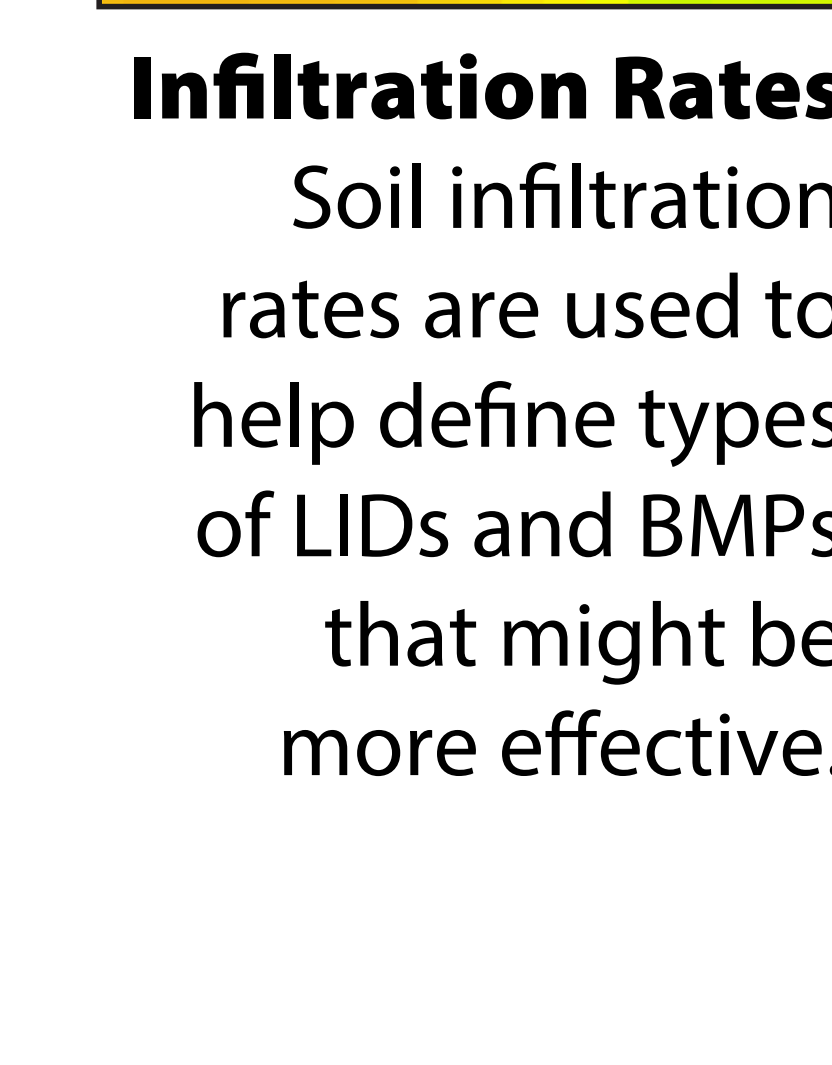
Existing Land Use
2011 National Land Cover Database classified into 16 land cover categories used to represent current conditions.



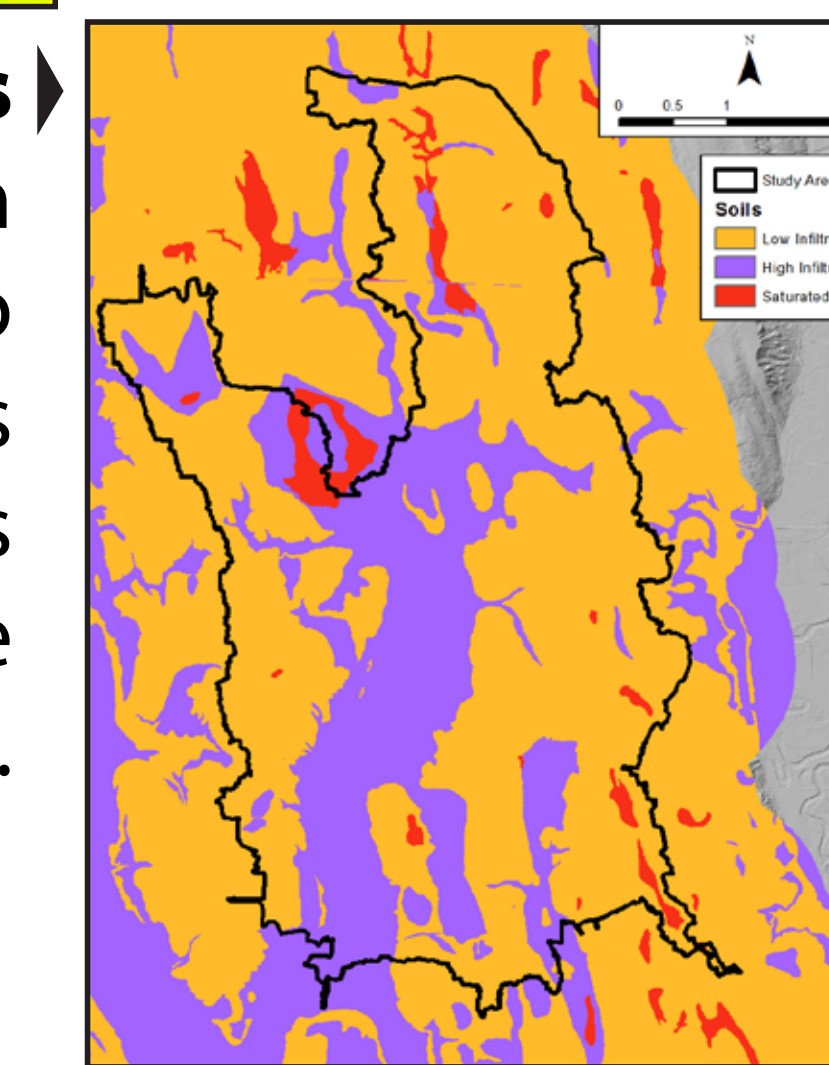
Future Land Use
Future Land use (2040) will be derived from King County, Snohomish County, City of Redmond, and City of Woodinville Comprehensive Plans



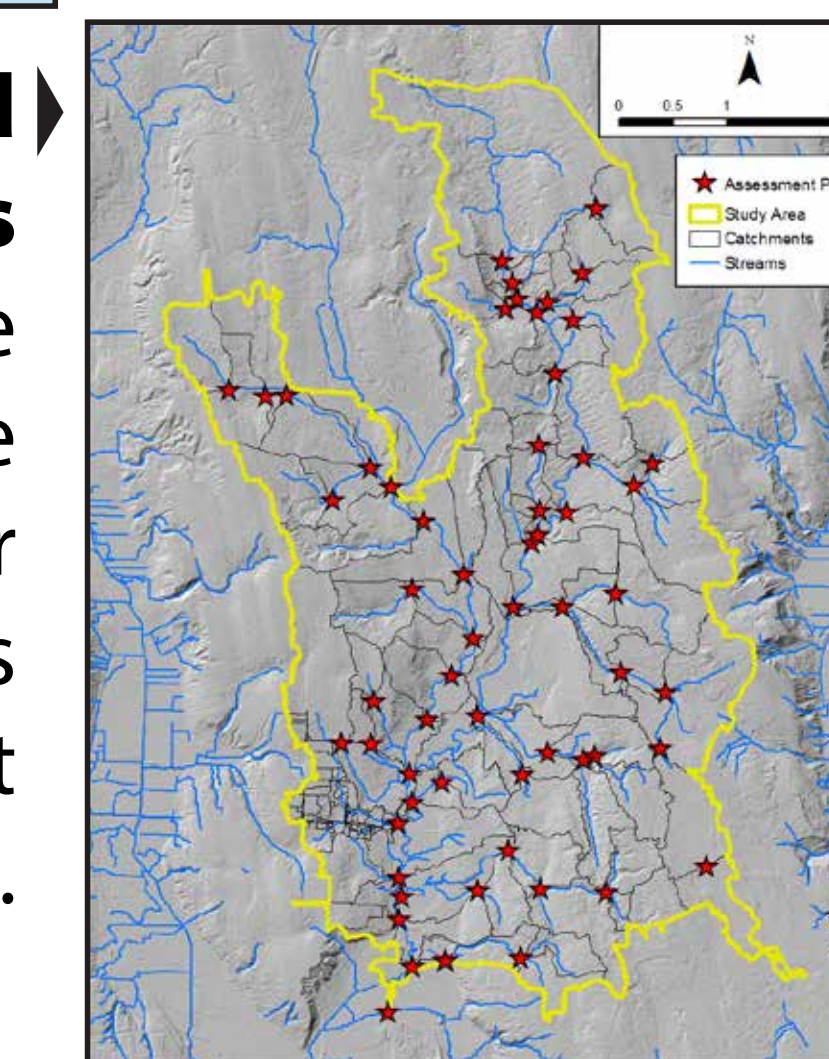
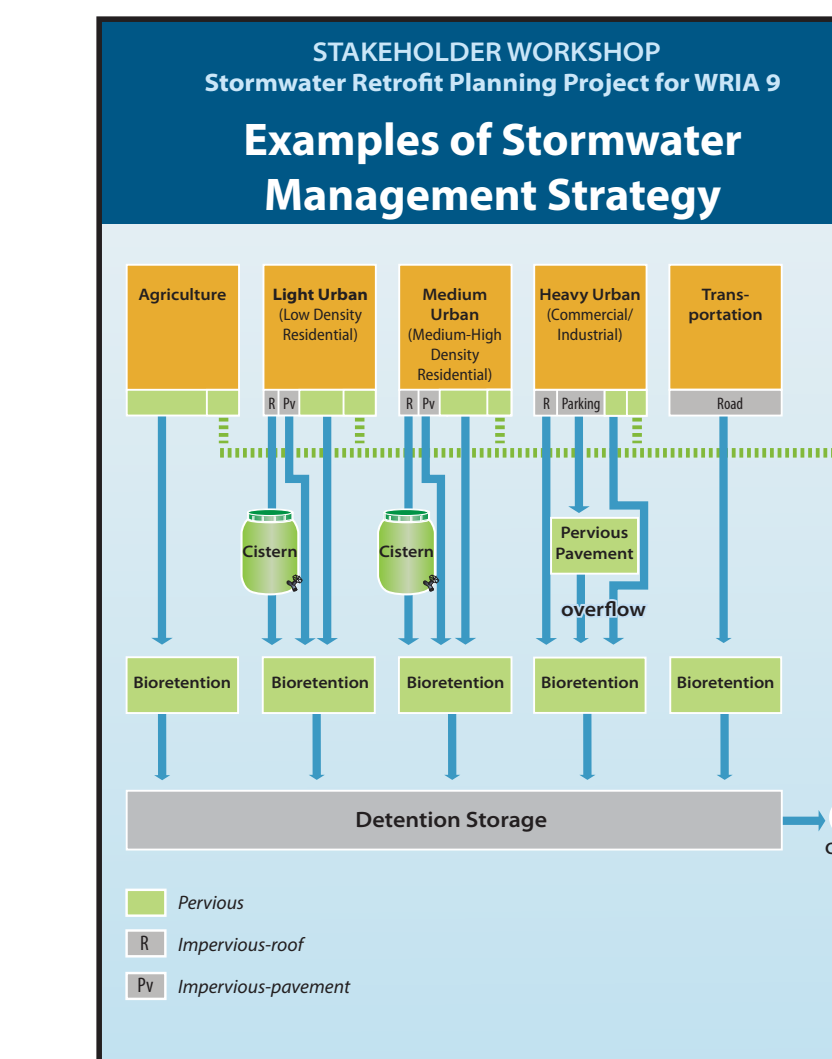
Atmospheric
Observed precipitation representing current rainfall patterns.



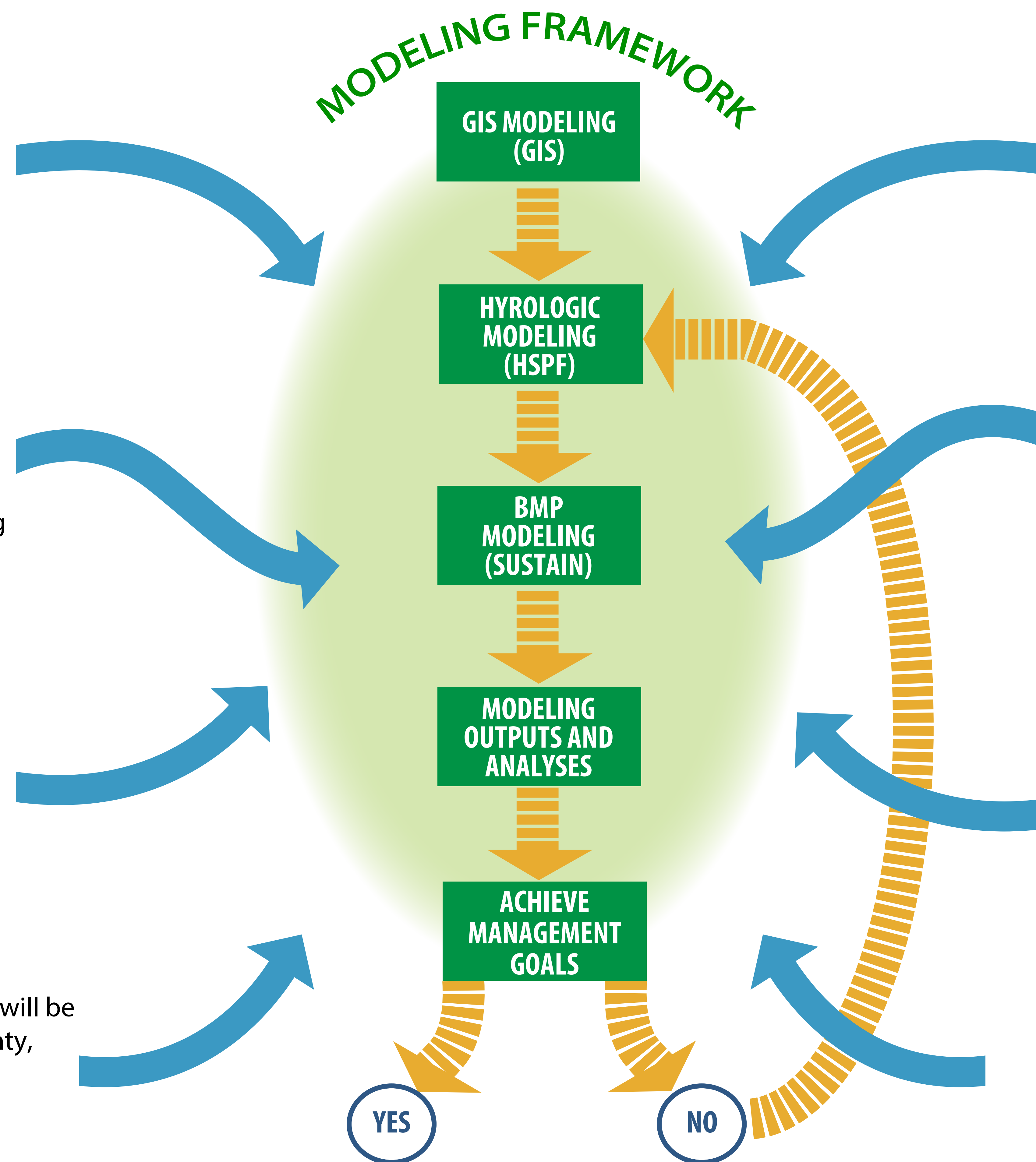
Infiltration Rates
Soil infiltration rates are used to help define types of LIDs and BMPs that might be more effective.



Stormwater Management Strategies
Strategies are developed to identify what BMPs should be considered for the implementation plan. The strategies include BMP types, BMP designs, and how generated runoff is routed in the basin.

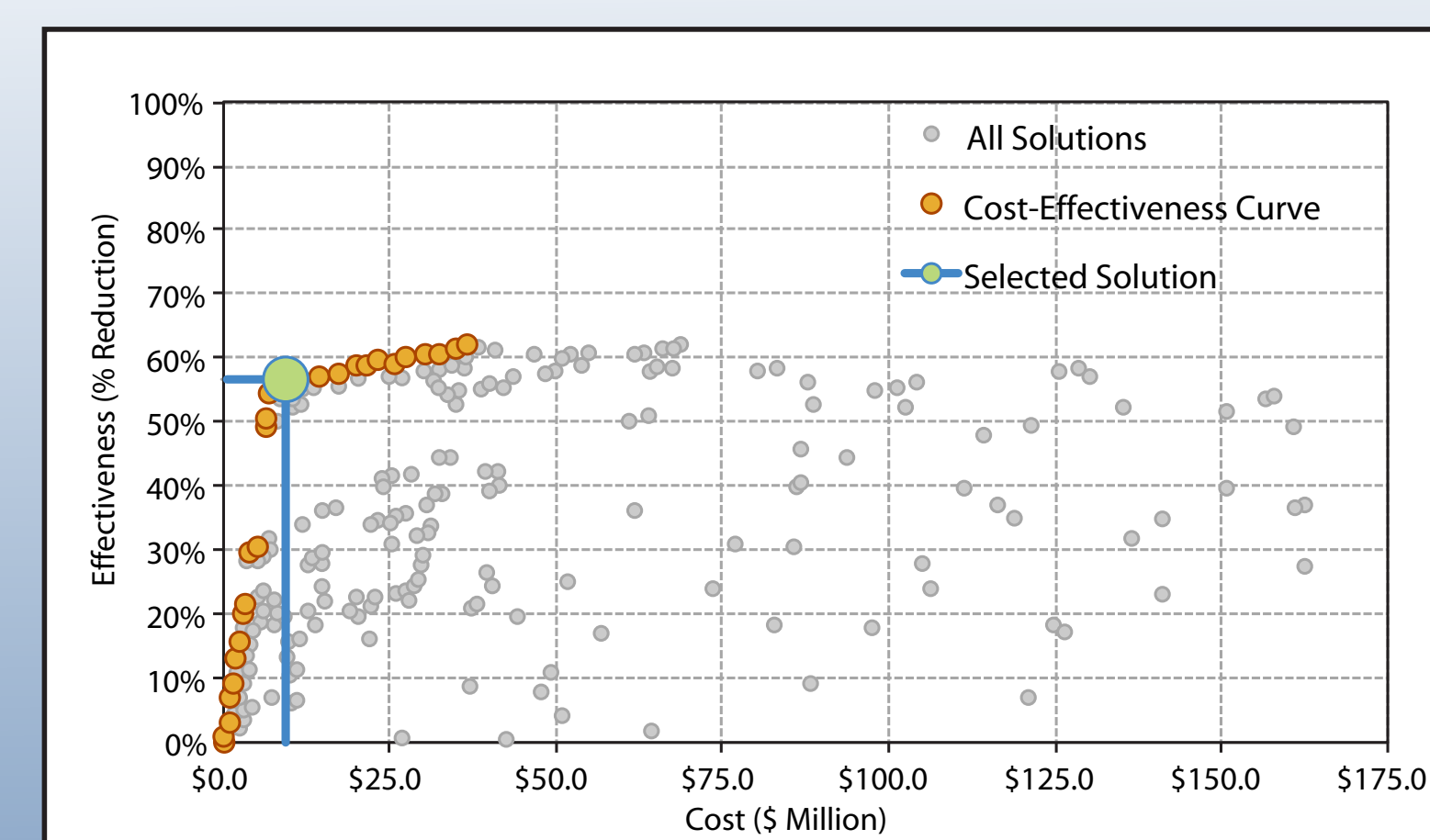


Assessment Points and Optimization Goals
Assessment points are identified where stormwater management strategies will be evaluated to meet watershed goals.

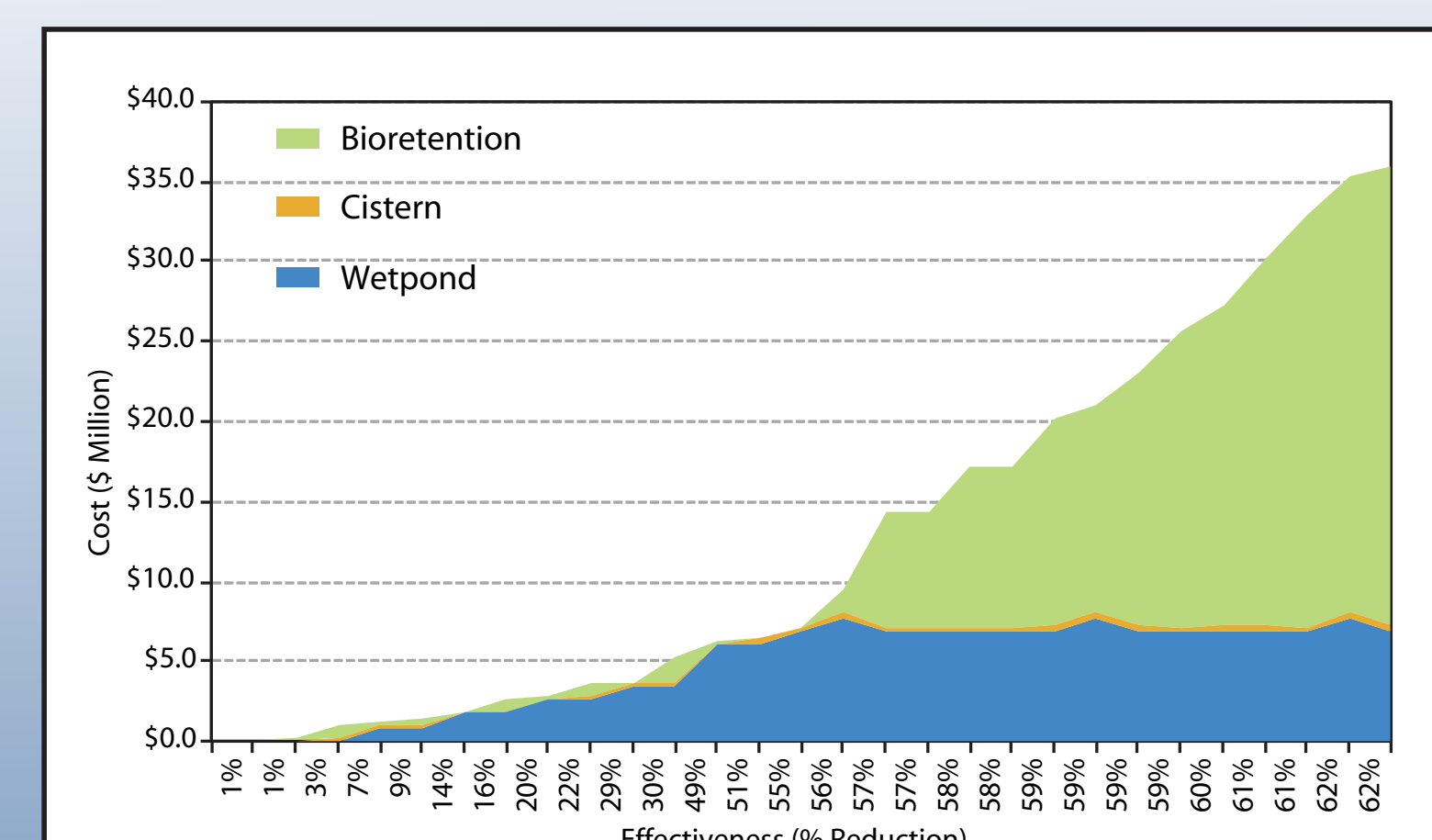


MODELING OUTPUTS & ANALYSES EXAMPLES

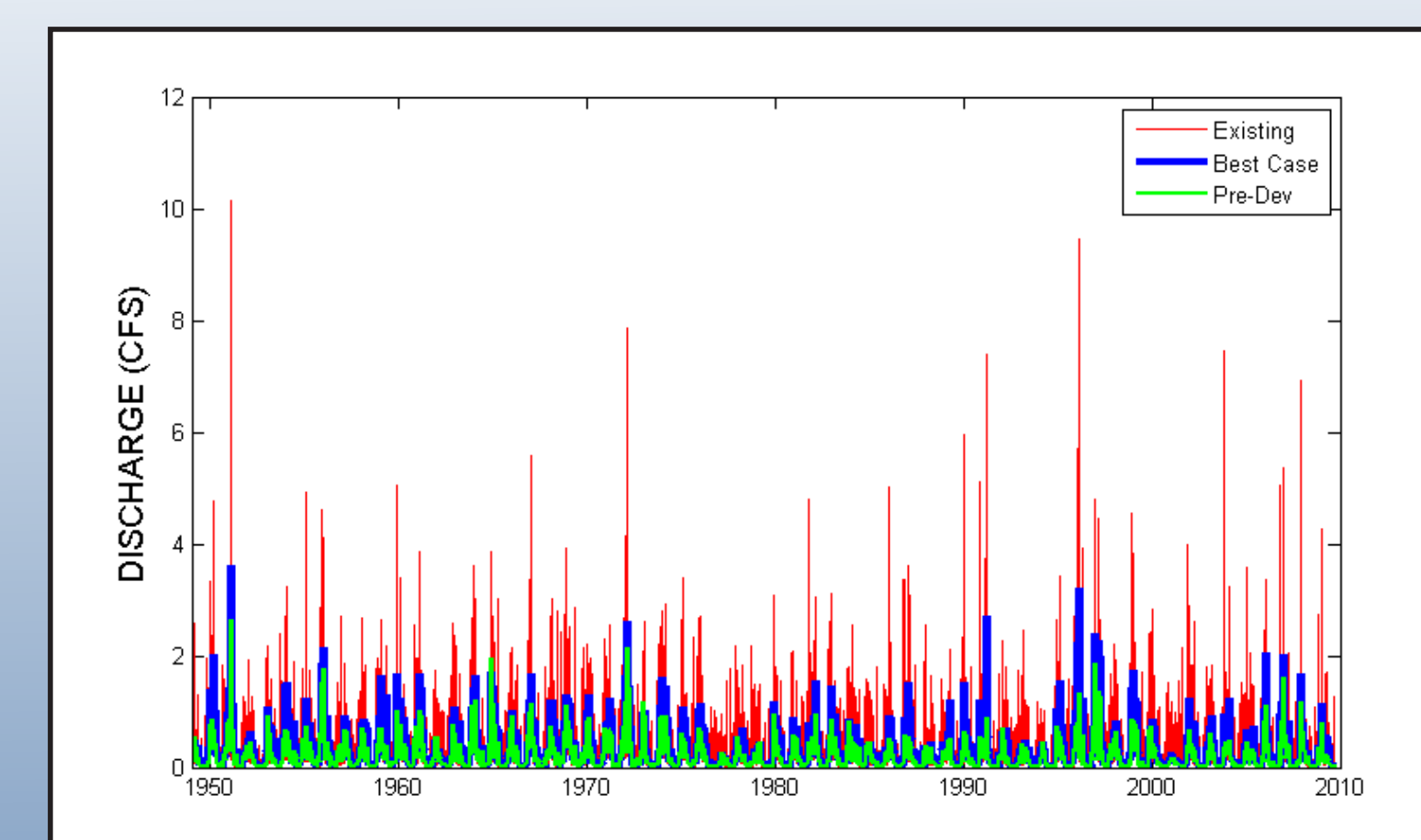
Cost-Effectiveness Curve



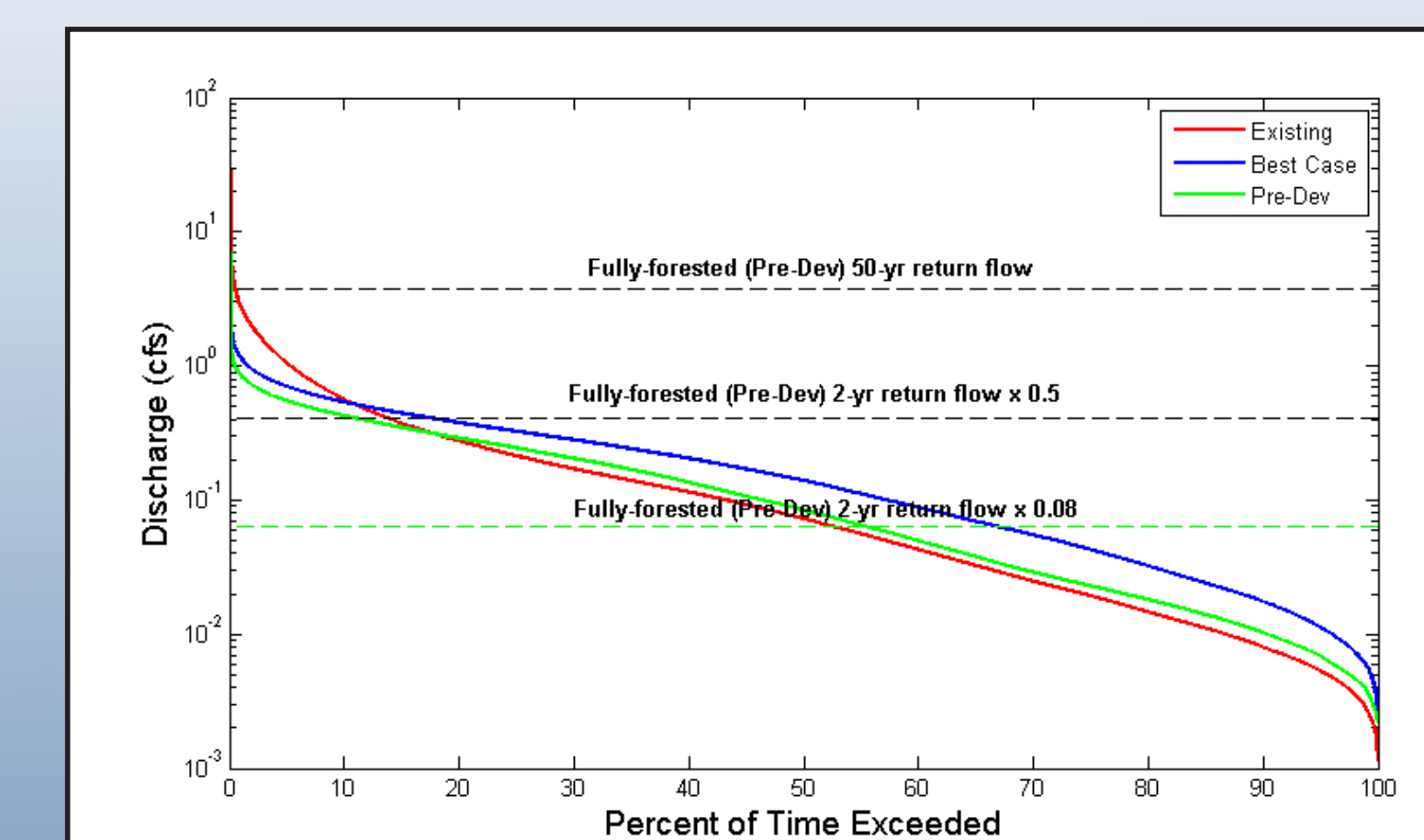
BMP Cost-Distribution Curve



Flow Rates



Flow Duration Curve



High Pulse Count

