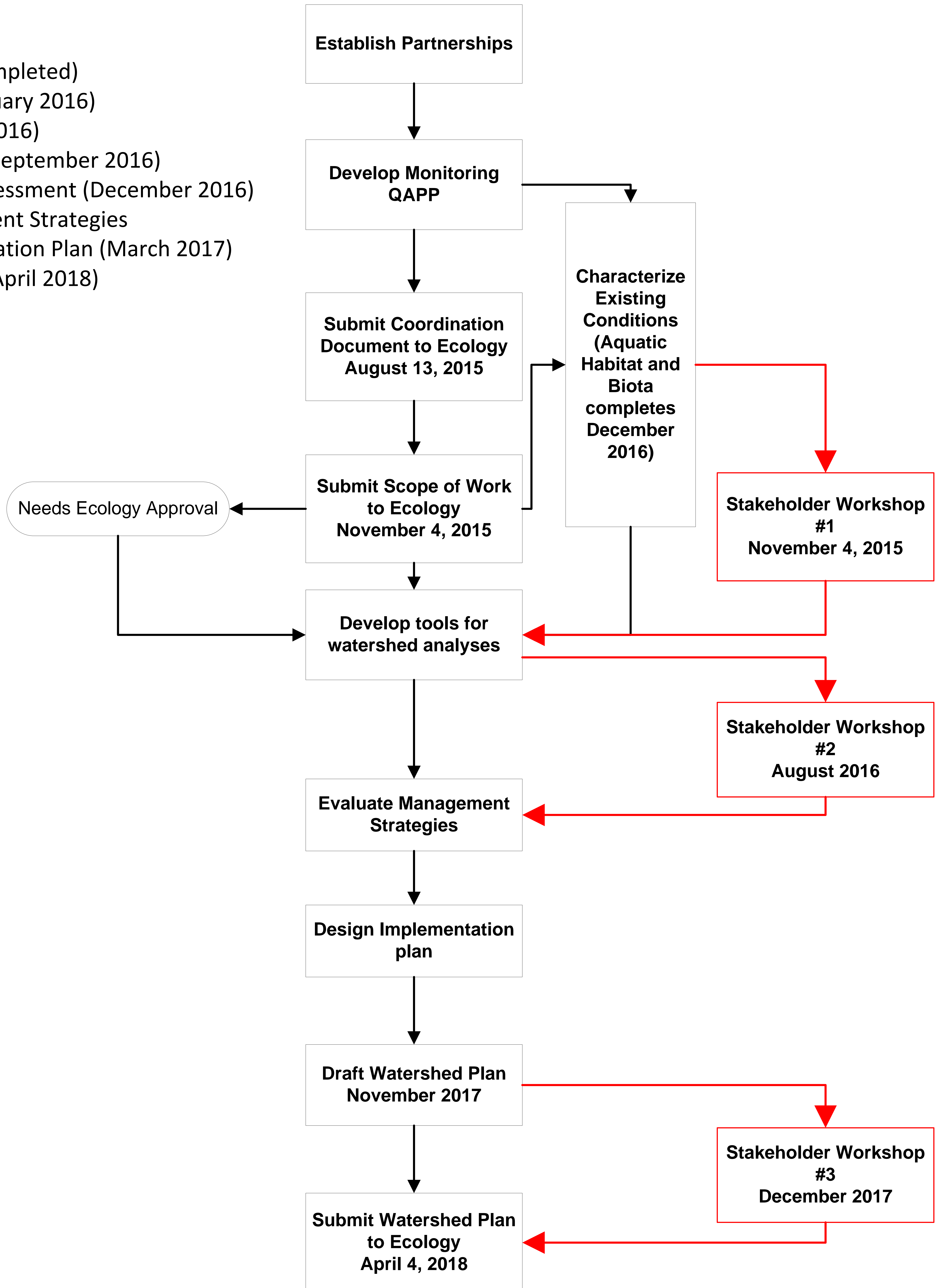
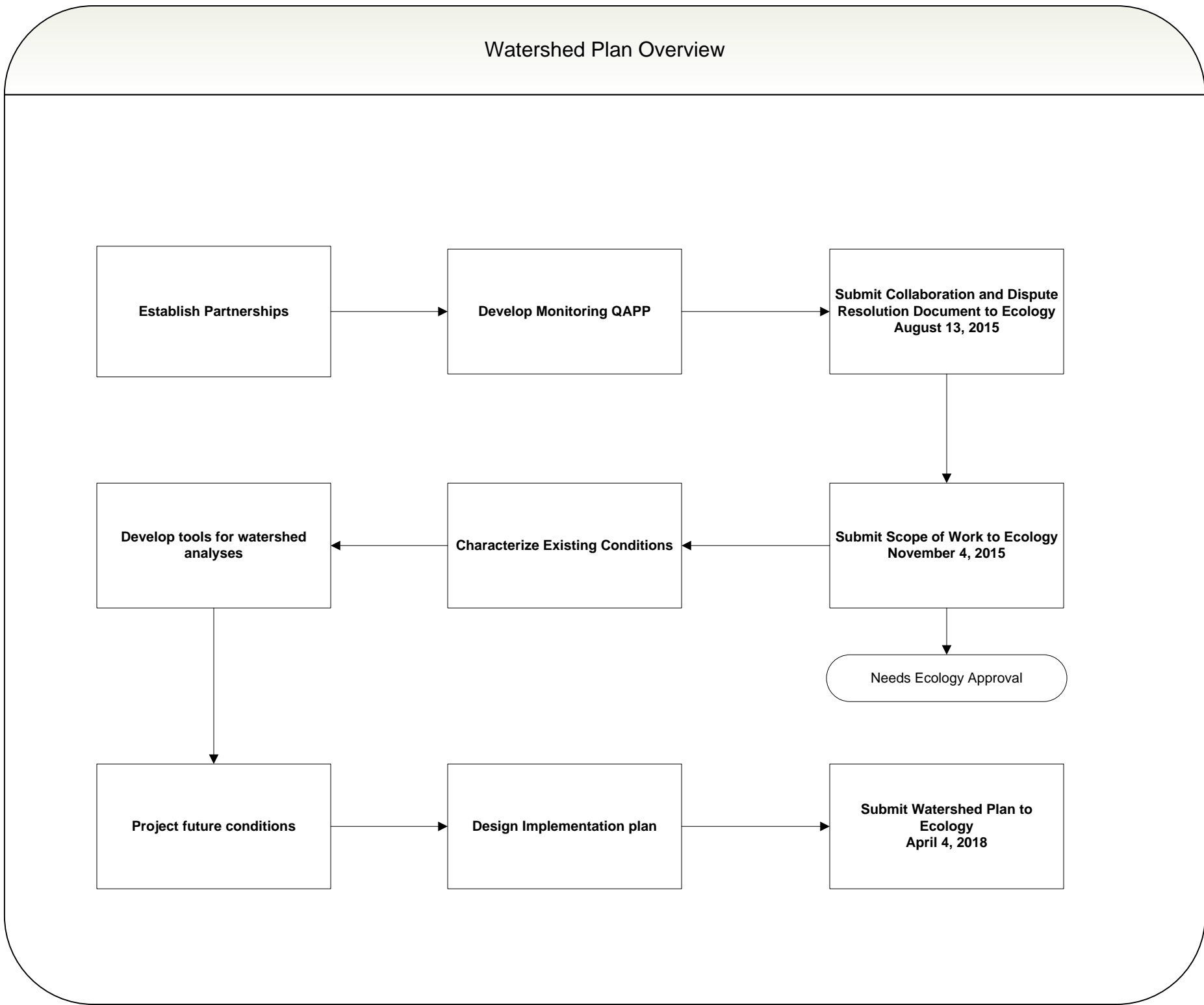


Milestones for NPDES Phase I Bear Creek Watershed-Scale Stormwater Plan

- Form Partnerships (Completed)
- Storm Monitoring (January 2016)
- Mapping (September 2016)
- Model Development (September 2016)
- Existing Conditions Assessment (December 2016)
- Stormwater Management Strategies and Draft Implementation Plan (March 2017)
- Final Watershed Plan (April 2018)

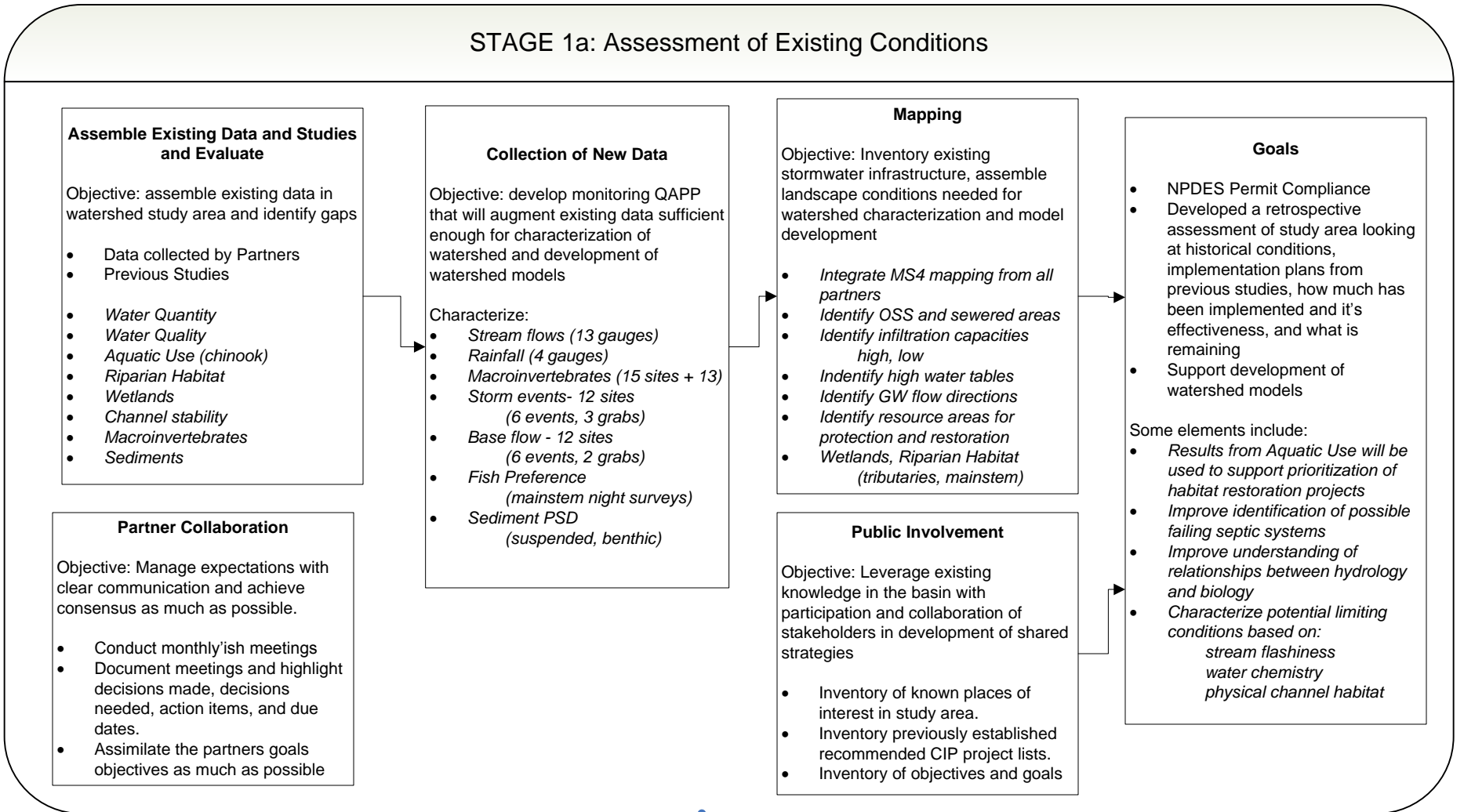


Framework for NPDES Phase I Bear Creek Watershed-Scale Stormwater Plan

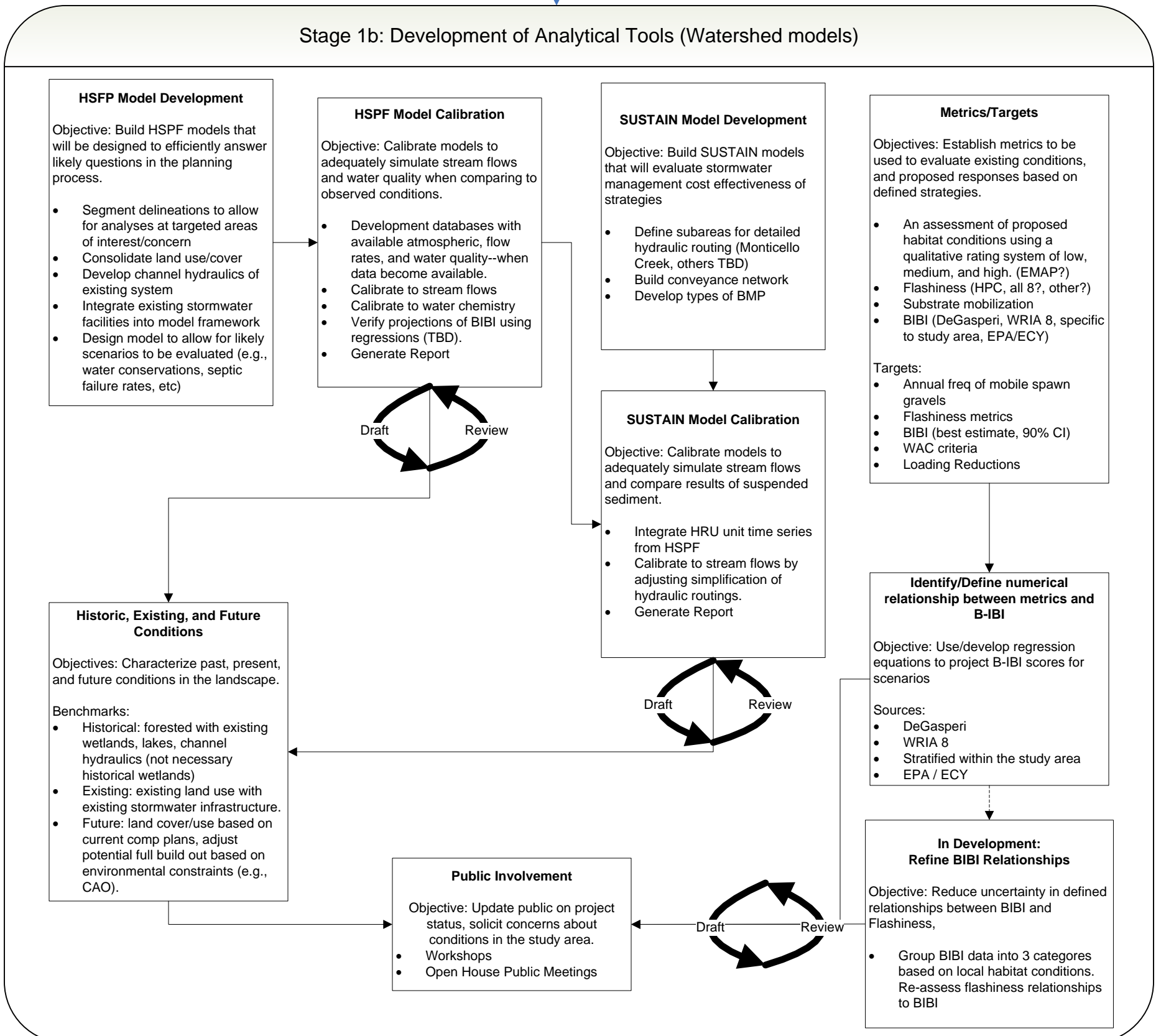


Framework for NPDES Phase I Bear Creek Watershed-Scale Stormwater Plan

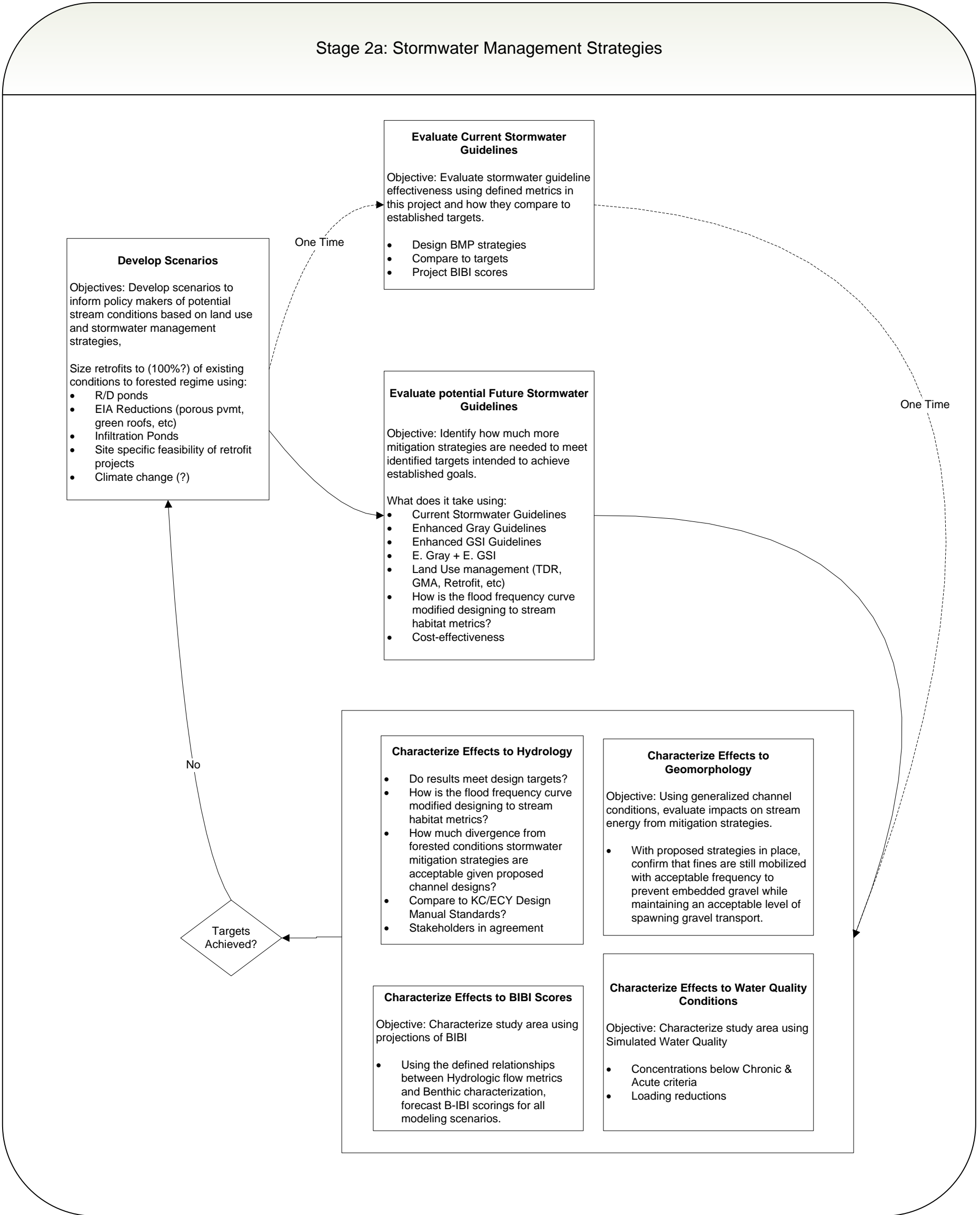
STAGE 1a: Assessment of Existing Conditions



Stage 1b: Development of Analytical Tools (Watershed models)



Framework for NPDES Phase I Bear Creek Watershed-Scale Stormwater Plan



Framework for NPDES Phase I Bear Creek Watershed-Scale Stormwater Plan

(Details of Stage 2b are in development) Stage 2b: Other Watershed Improvement Strategies

Permit Required (Funded by all partners)

In Development: Evaluate Riparian Conditions

Objective: Using existing information, catalog and characterize riparian vegetation.

- Catalog riparian conditions over past few decades
- Analyze where improvements can be made
- Recommend improvements with resiliency to climate change

Draft Review

In Development: Evaluate Aquatic Fish

Objective: Using existing information, catalog and characterize presence and abundance of aquatic fish.

- Catalog presence and abundance of aquatic fish (target Chinook salmonid)
- Characterize fishery operations conducted in the watershed

Draft Review

In Development: Evaluate Wetlands

Objective: Using existing information, catalog and characterize wetlands.

- Catalog wetlands over past few decades
- Characterize basin areas draining to wetlands
- Evaluate effectiveness of past/present protection guidelines and restoration efforts

Draft Review

In Development: Characterize Channel Habitat

Objective: Integrate assemblage of existing information, summarize channel habitat conditions.

- Characterize channel habitat conditions over past few decades
- Analyze where improvements can be made
- Recommend improvements with resiliency to climate change
- Where feasible, include opportunity costs (in Today's dollars)
- Evaluate effectiveness of (historical?) regulatory protections.

Draft Review

Discretionary (Funded by King County)

In Development: Evaluate Channel Habitat / Riparian Conditions

Objective: Characterize localized channel habitat conditions at a limited number of reaches

- Define habitat metrics to be measured
- Select locations coincident with BIBI monitoring stations
- Generalize habitat quality into 3 broad categories: poor, fair, good.

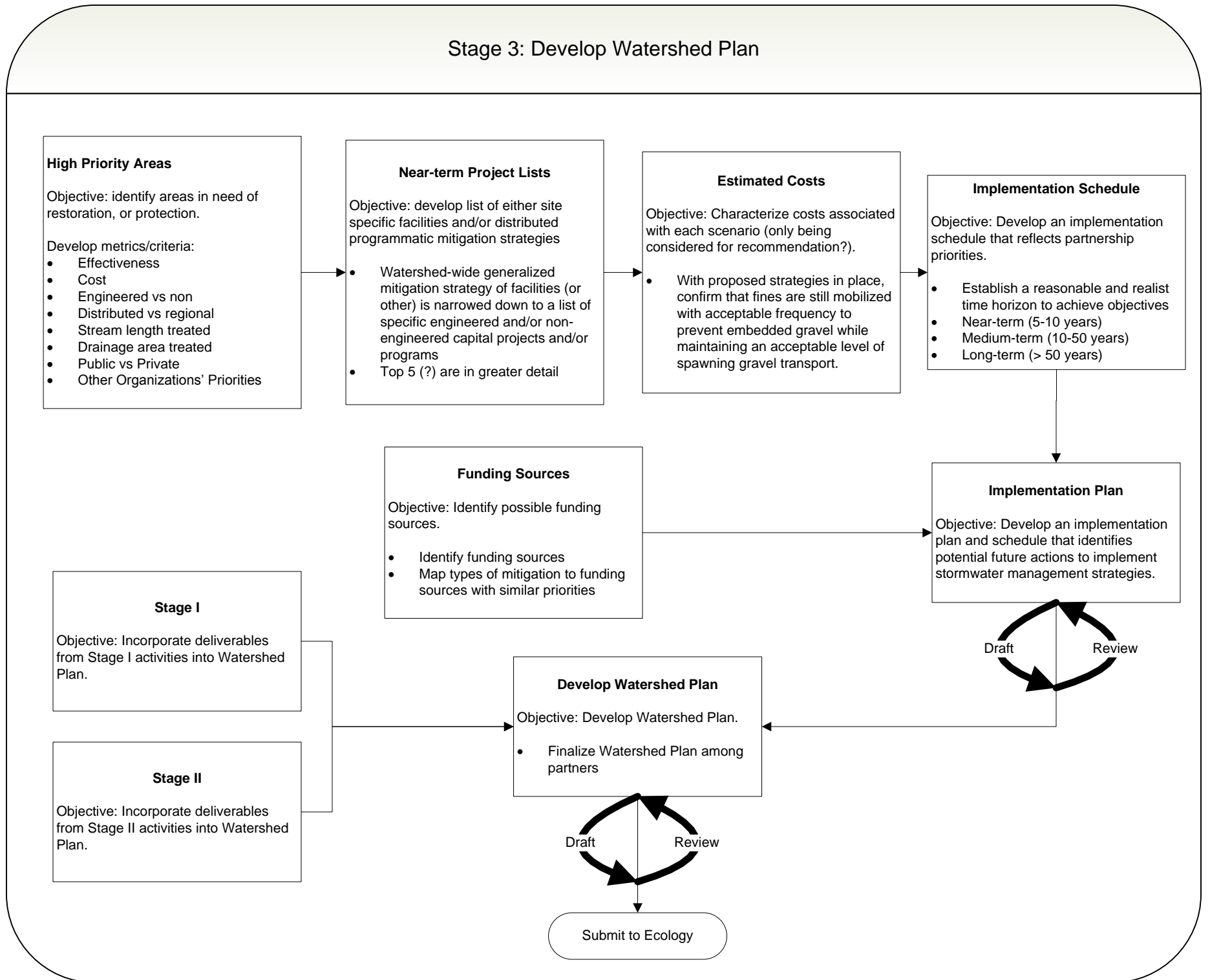
In Development: Evaluate Aquatic Fish Use

Objective: Identify habitat preferences of juvenile Chinook.

- Define habitat metrics to be measured
- Select reaches for Chinook parr survey

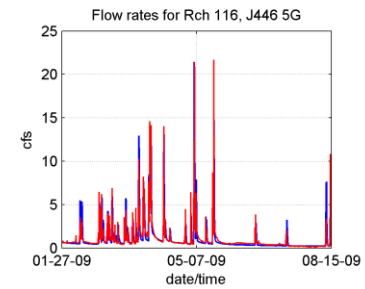
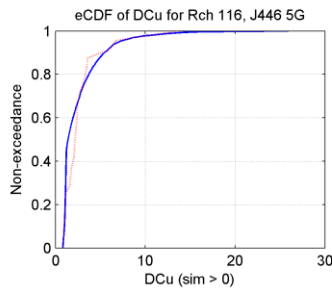
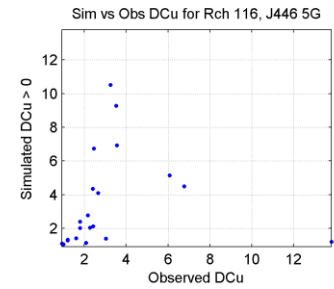
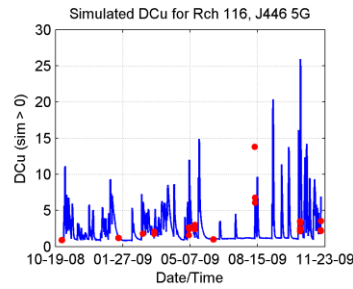
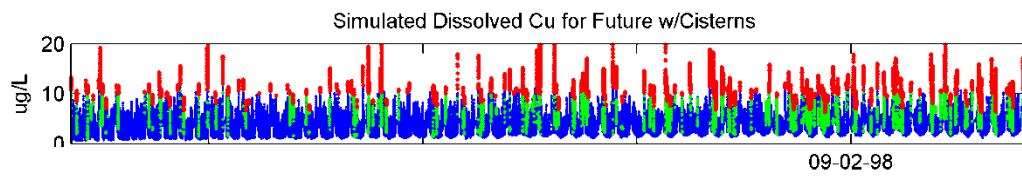
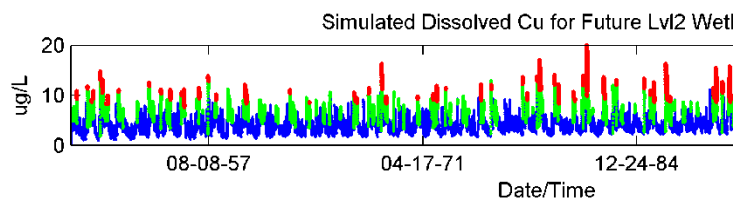
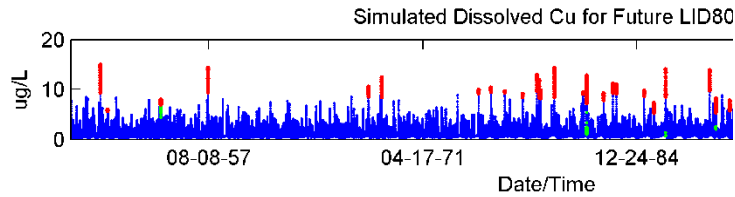
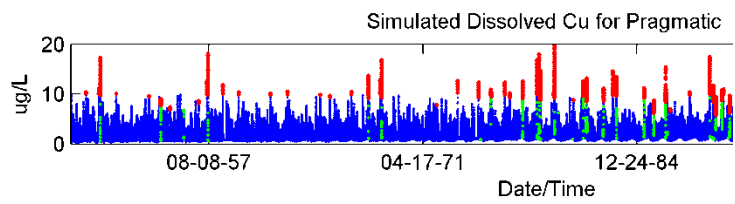
Draft Review

Framework for NPDES Phase I Bear Creek Watershed-Scale Stormwater Plan



Framework for NPDES Phase I Bear Creek Watershed-Scale Stormwater Plan

Example Outputs and Analyses



Storm #3 (May 4, 2009)

