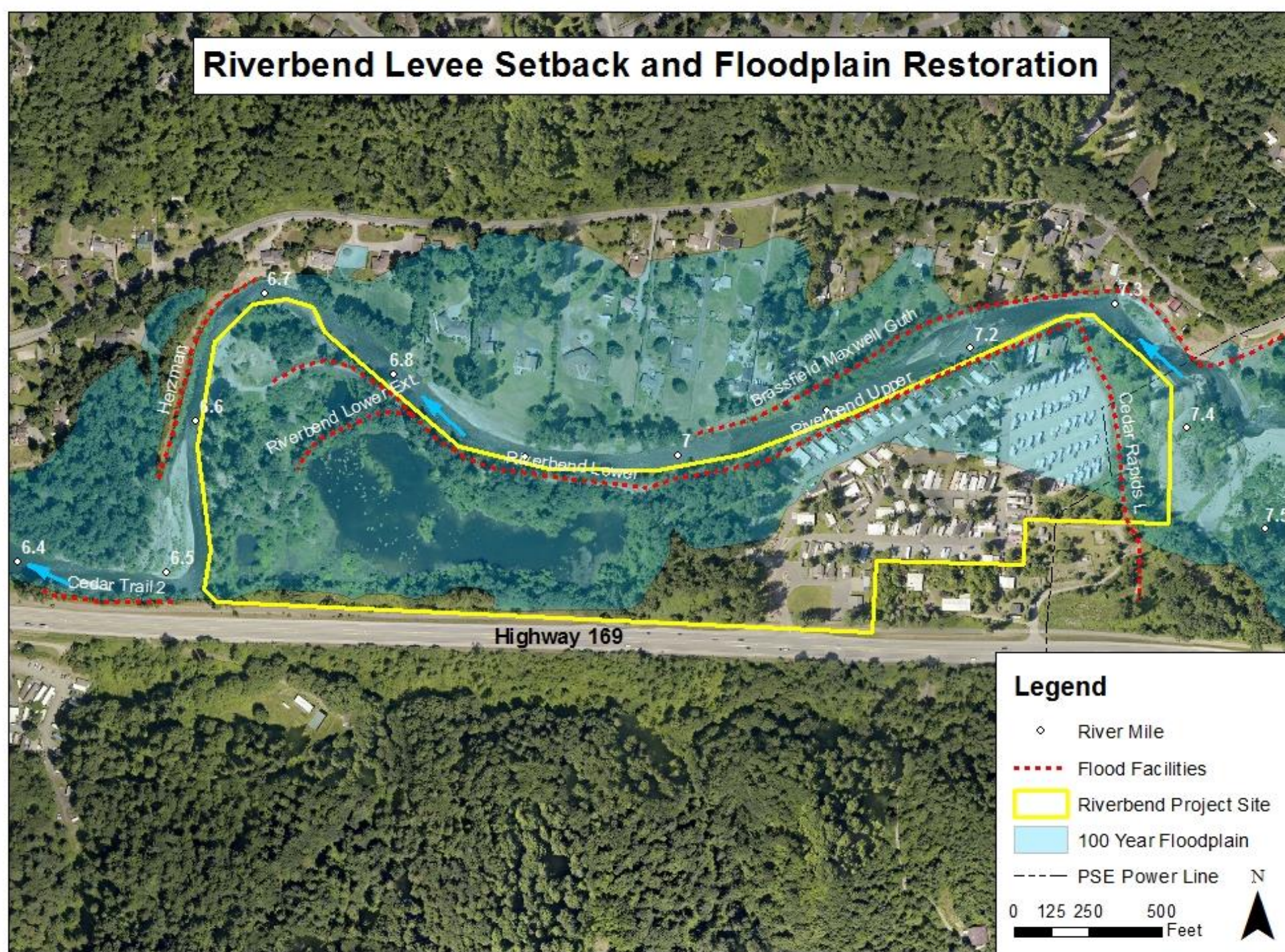


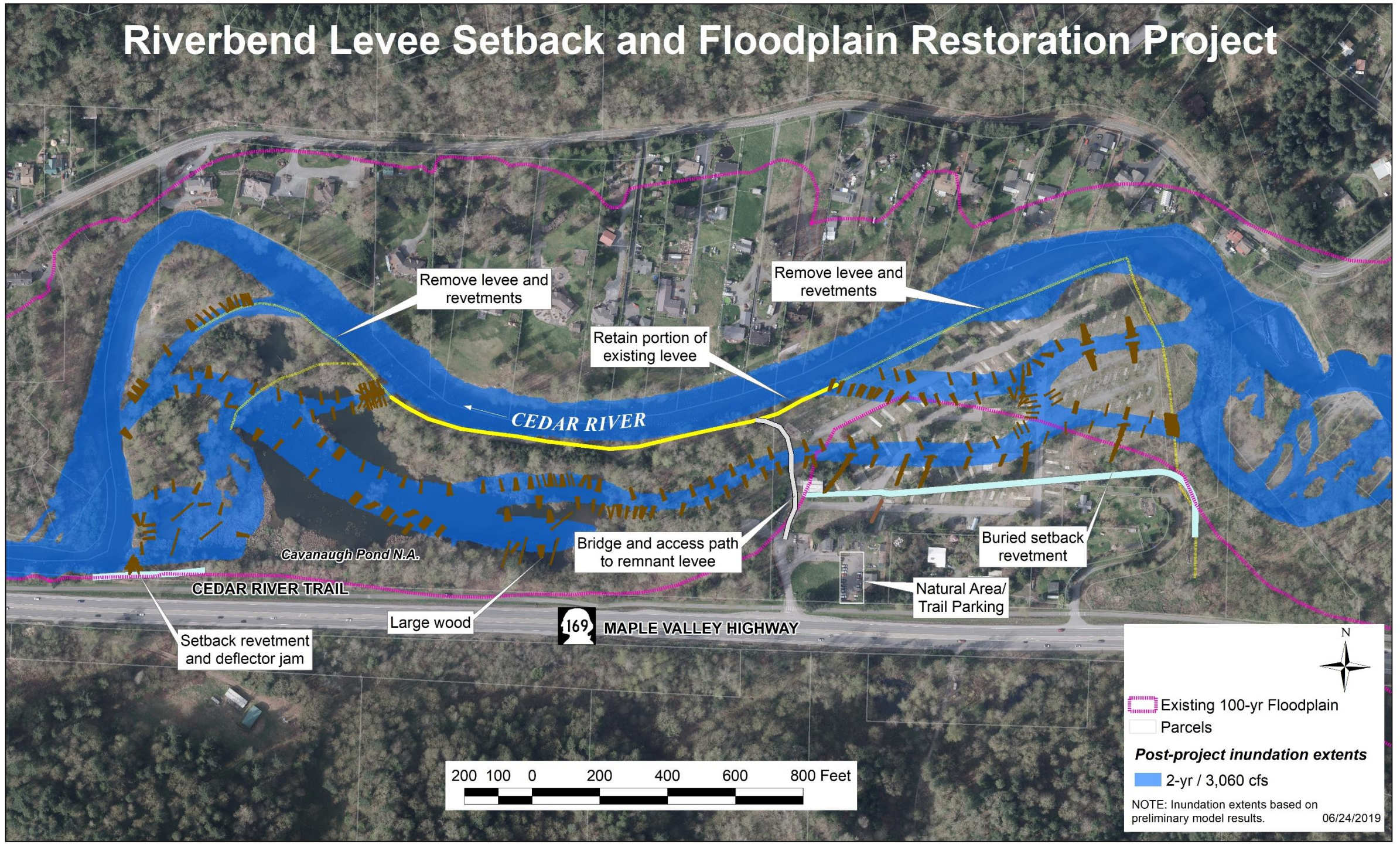
Riverbend Levee Setback and Floodplain Restoration



Multiple Benefit Project

- ***Improve in-stream and off-channel habitat*** for Chinook and other salmon by increasing channel complexity and reconnecting floodplain habitats
- ***Reduce flood hazards*** by increasing flood storage and dissipating energy through more complex channel and connected floodplain
- ***Reduce long term cost*** to protect and repair damage to public infrastructure and private property
- ***Where feasible, re-initiate natural river processes*** via setback levee/revetments to achieve multiple goals

Riverbend Levee Setback and Floodplain Restoration Project

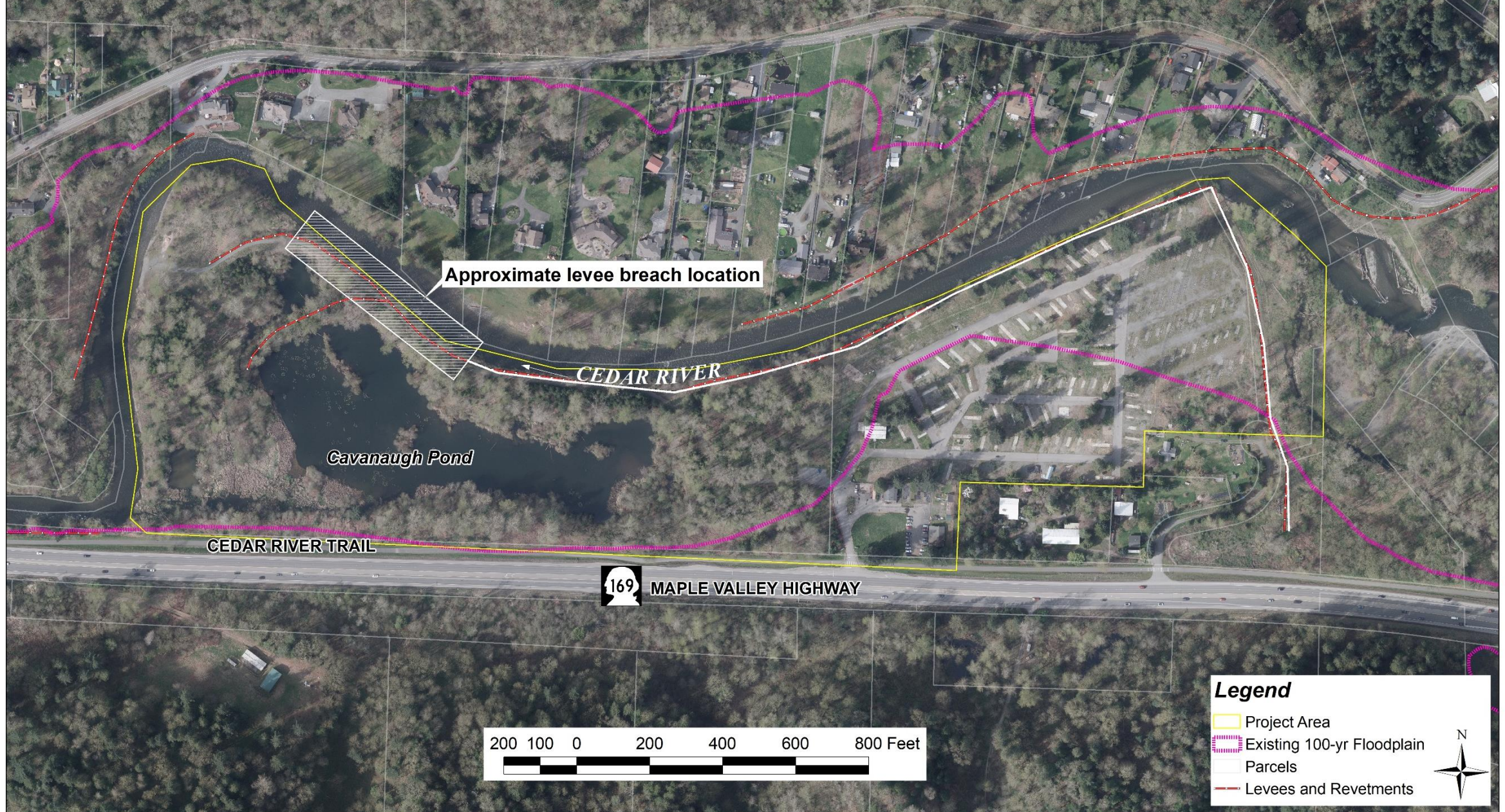


February 8, 2020
8,740 cfs at Renton

Cedar River



Riverbend Levee Setback and Floodplain Restoration Project



February 10, 2020
5,530 cfs at Renton

SR 169

Cedar River Trail

Cavanaugh Pond

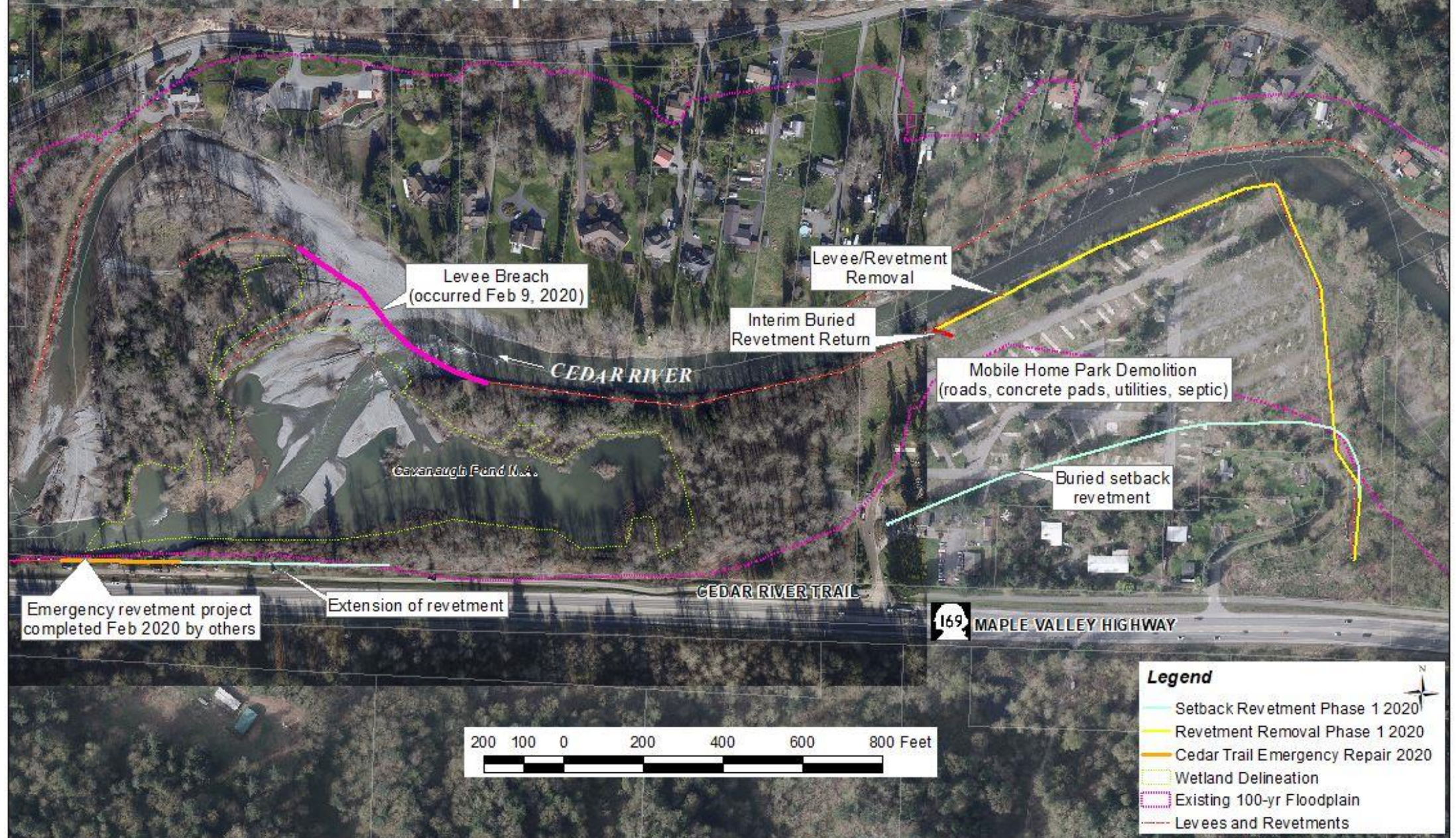
Previous location of Riverbend Lower Levee

Cedar River



Riverbend Levee Setback and Floodplain Restoration Project

Proposed 2020 Construction



Phase 1 Elements 2020

1. Completion of Demolition
 - Remove all remaining structures, roads, pavement and building pads
 - Excavation and disposal of underground utilities
 2. Extension of protection of Cedar River Trail
 - Buried rock north of trail to maintain stable, long term protection
 - Temporary Trail detour onto SR 169 shoulder with robust barriers
 - Working with KC Parks and WSDOT for temporary lane restriction
 3. Install buried setback through MH park
- **Does NOT include levee removal**
- Need more time to assess and adjust plans

Phase 2 Elements

Anticipated 2021 or 2022

1. Levee removal along left bank
 - *Extent to be determined*
 2. Side channel construction
 - *Size and level of connectivity to be determined*
 3. Additional buried revetment along Cedar River Trail likely
- These elements delayed to allow time
- To assess changes in river
 - Rerun flow models
 - Update projections of geomorphic change

Phase 2 – 2021-2022 construction target





1965