

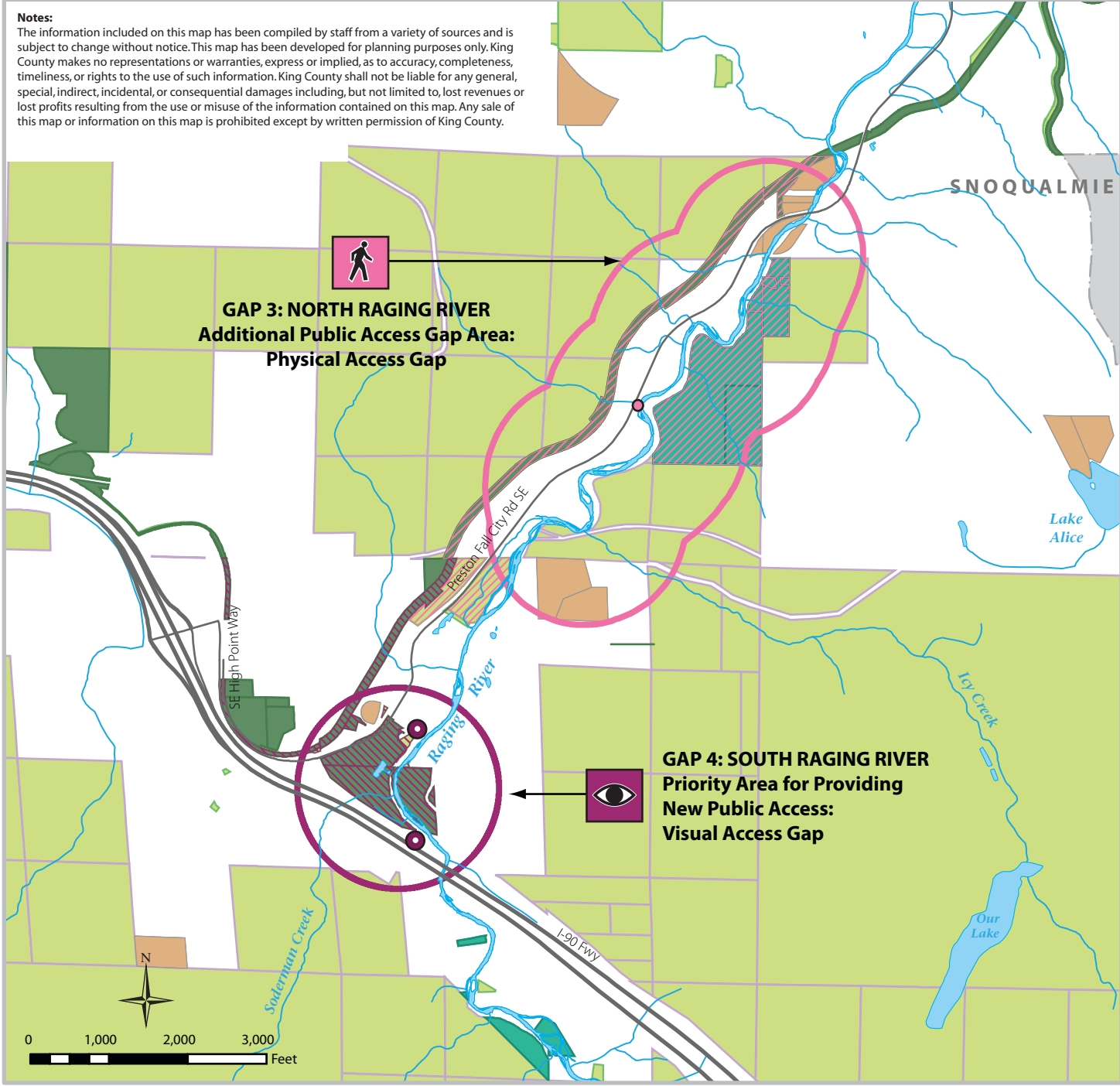
Shoreline Public Access Plan

Gap 3: North Raging River
 Gap 4: South Raging River, WA

- Priority Area For Providing New Public Access**
 - Priority Public Street End
 - ▨ Priority County-Owned Parcel in Gap Area
- Additional Public Access Gap Areas**
 - Public Street End (potential opportunity for public access)
 - ▨ County-Owned Parcel in Gap Area
- Existing Informal Access Points**
 - Park Informal Access Point- Visual and/or Physical
- Existing Public Access**
 - PBRs Property
 - Other Water Bodies
 - Incorporated Areas
 - Potential Annexation Areas

- Public Lands**
 - Other County-Owned Lands
 - State
- Major Road
- Major Stream

Notes:
 The information included on this map has been compiled by staff from a variety of sources and is subject to change without notice. This map has been developed for planning purposes only. King County makes no representations or warranties, express or implied, as to accuracy, completeness, timeliness, or rights to the use of such information. King County shall not be liable for any general, special, indirect, incidental, or consequential damages including, but not limited to, lost revenues or lost profits resulting from the use or misuse of the information contained on this map. Any sale of this map or information on this map is prohibited except by written permission of King County.



Produced by: DNRP GIS, Visual Communications and Web Unit File Name: 1108_SMP_Rd_parkgatingal.jpg