

# **LAKE WILDERNESS 2019**

## **Lake Stewardship Monitoring Report**

King County Water & Land Resources Division  
Science & Technical Support Section  
[www.kingcounty.gov/EnvironmentalScience](http://www.kingcounty.gov/EnvironmentalScience)

---

### **Summary & Recommendations**

*Thank you to Renato Santos, and Parker & Paul Wichelmann, the volunteer monitors for Lake Wilderness.*

#### **The key takeaways from the 2019 monitoring season are:**

- Lake Wilderness had very clear water, with low nutrient concentrations and algal growth.
- No algal blooms were reported for toxin testing in 2019.

#### **The Lake Stewardship Program recommends:**

- Stay alert for toxic algae blooms in Lake Wilderness – increase people’s awareness of toxic algae, and their ability to identify which algae are potentially toxic. Any potentially toxic blooms should be reported to the King County Lake Stewardship Program and sampled for toxin analysis.
  - Explore why total nitrogen concentrations have been increasing over time. If this increase continues, it could lead to more algal blooms in the future.
  - Monitoring is a key part of good lake stewardship, building a valuable long-term dataset to guide lake management and detect any future problems. Continue to monitor Lake Wilderness through the Lake Stewardship Program.
-

### ***In this report:***

- **What We Measure & Why**
- **Water Quality Results & Trends**
  - 2019 monitoring results
  - Long-term annual averages
  - Trends over time
- **Trophic State**
  - Trophic state indices
  - Comparison map
- **Supplemental Data**
  - Summary statistics
  - Continuous lake level and temperature
  - Hydrology: Lake level and precipitation
  - Year-round Secchi depth and water temperature
  - Water column profile
  - Total alkalinity
  - Water color

## **What We Measure & Why**

- **Secchi depth** is a measure of water clarity or transparency. Secchi depth is shallower when there are more suspended particles in the lake, such as sediment or algae. Secchi depth is also affected by water color, often from tannins or other naturally occurring organic molecules.
- **Water temperature** can affect the growth rates of plants and algae. In addition, cooler or warmer water temperatures favor different species of fish and other aquatic organisms. Many lakes in King County naturally have cold water, so increases in water temperature can favor non-native species.
- **Chlorophyll-a** is a measure of the amount of algae in a lake. Chlorophyll-a is a pigment necessary for algae to photosynthesize and store energy.
- **Phosphorus** and **nitrogen** are naturally occurring nutrients necessary for growth and reproduction in both plants and animals. Increases in nutrients (especially phosphorus) can lead to more frequent and dense algal blooms.
- The **ratio of total nitrogen to total phosphorus (N:P)** indicates whether nutrient conditions favor the growth of cyanobacteria (blue-green algae). When N:P ratios are near or below 25, cyanobacteria can dominate the algal community. This is important because cyanobacteria have the ability to produce toxins.

## **Water Quality Results & Trends**

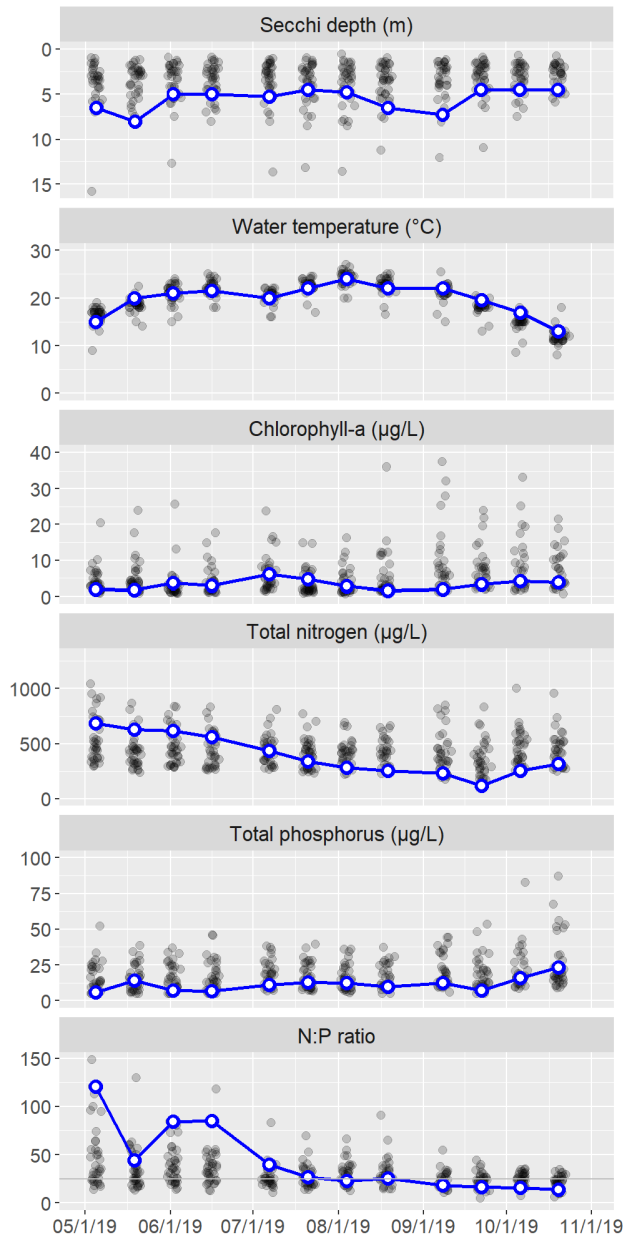
The following graphs show the water-quality parameters that are sampled from May through October, at 1 m depth (additional depths and parameters are measured on profile

days; see *Supplemental Data*). The left column of graphs shows results for each sampling date in 2019, and the right column shows average values for each year (May-October averages).

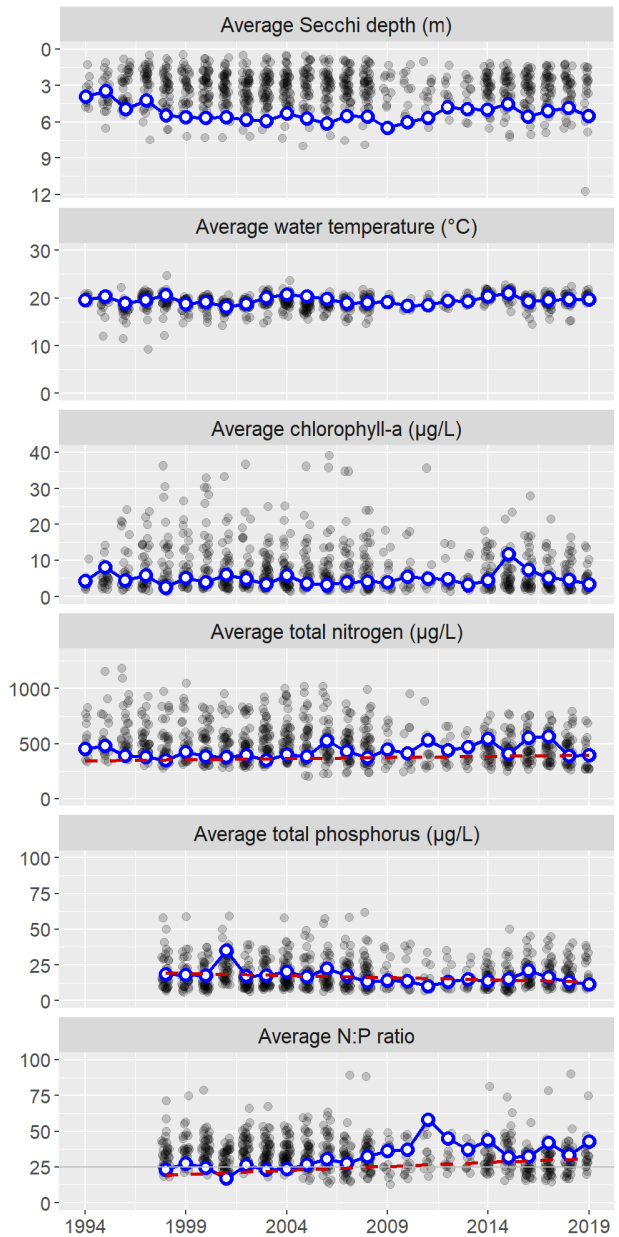
Data for Lake Wilderness are the blue circles (with white centers) connected by the blue line. Any gaps in the blue line indicate missed samples. To provide some context for these values, the grey points in the background are results for all other lakes in the Lake Stewardship program.

Any long-term trends in Lake Wilderness are drawn with a dashed red line and described further after the graphs. Statistical trend analyses used a seasonal (monthly) Kendall test ( $p < 0.05$ ).

## 2019 Monitoring Results



## Long-Term Annual Averages



Nitrogen-to-phosphorus (N:P) ratios were periodically below 25, indicating times when the algal community was more likely to be dominated by cyanobacteria (which have the ability to produce toxins).

The table below gives more details about the long-term trends. Results are presented as an average amount and percent of change per decade (the increase or decrease over ten years). Percent change is calculated as the percent of the estimated value in 1994, when monitoring started.

Parameter	Change per Decade	(%)
Total nitrogen	20 µg/L	(5.9%)
Total phosphorus	-2.9 µg/L	(-14%)
N:P ratio	5.6	(33%)

The increasing total nitrogen concentrations and decreasing total phosphorus concentrations have both contributed to an increasing N:P ratio. If the N:P ratio continues to increase, it will become less likely for algal blooms in Lake Wilderness to be dominated by cyanobacteria (which have the ability to produce toxins).

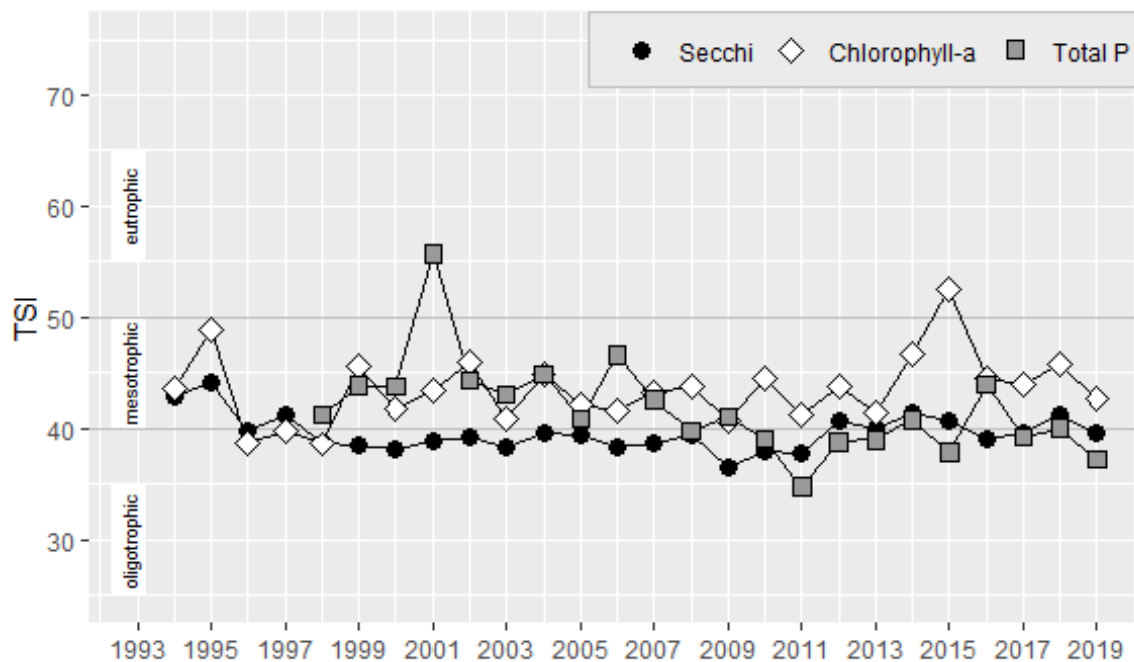
## **Trophic State**

The Trophic State Index (TSI) is a common index of a lake's overall biological productivity. TSI values are calculated from Secchi depth, chlorophyll-a concentrations, and total phosphorus concentrations. These three TSI estimates are all scaled between 0 and 100.

TSI calculations use average values from June-September, focusing on fairly consistent "summer" conditions. This is in contrast with the annual averages shown above, which also include May and October data.

*Oligotrophic* lakes (TSI <40) are very clear, with low nutrient concentrations and low algal growth. *Eutrophic* lakes (TSI >50) have less-clear water, with high nutrient concentrations and high algal growth. Eutrophic lakes are more likely to have frequent algal blooms. *Mesotrophic* lakes (TSI 40-50) are in the middle, with fairly clear water, and moderate nutrient concentrations and algal growth. Lakes in lowland King County have a range of different natural trophic states, and human activities may also alter a lake's trophic state (usually by changing nutrient inputs).

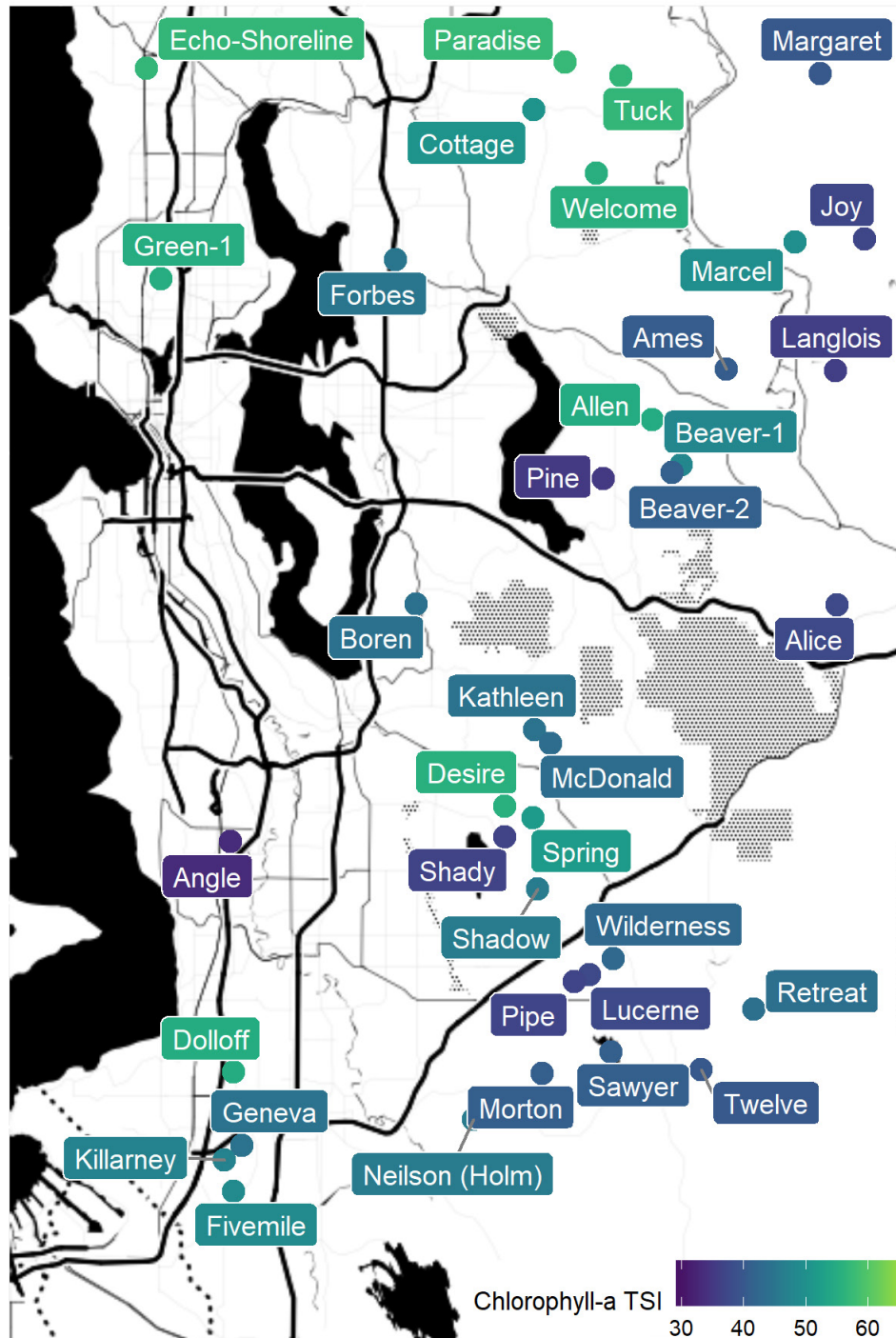
## **Trophic state indices**



In 2019, the Secchi and total phosphorus TSI values were in the oligotrophic range, while the chlorophyll TSI value was in the mesotrophic range.

## Comparison map

For a comparison with other lakes, this map shows the trophic state for each lake in the King County Lake Stewardship program in 2019. The color of each circle indicates the lake's average chlorophyll-a TSI value for the year.



## **Supplemental Data**

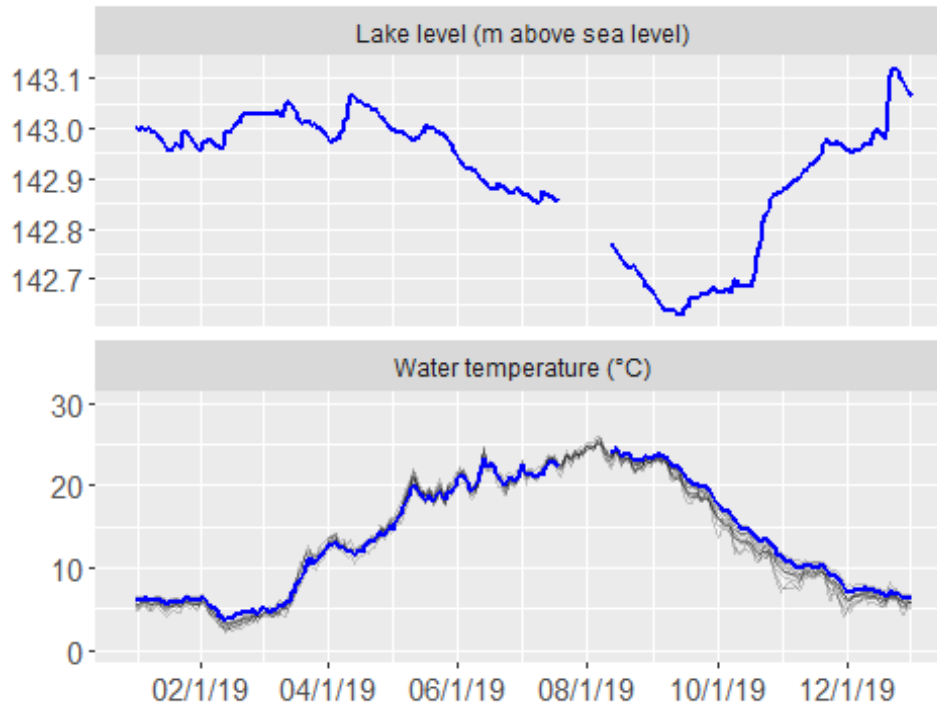
### **Summary statistics**

This table summarizes data from 2019 (1 m depth only), giving the minimum, mean (average), and maximum values for each parameter. This includes summary statistics for the full 2019 calendar year for Secchi and temperature, which were measured year-round, and May-October summary statistics for all parameters. To reduce biases from missing data or changes in sampling frequency, monthly means were calculated and then averaged to give an overall mean.

Parameter	Minimum	Mean	Maximum
<b>Full-year statistics</b>			
Secchi depth (m)	3.3	5.3	8.0
Water temperature (°C)	3.0	13.7	24.0
<b>May-October statistics</b>			
Secchi depth (m)	4.0	5.5	8.0
Water temperature (°C)	12.5	19.6	24.0
Chlorophyll-a (µg/L)	1.6	3.3	6.0
Total nitrogen (µg/L)	116.0	393.8	687.0
Total phosphorus (µg/L)	5.7	11.6	23.3
N:P ratio	13.6	42.7	120.5

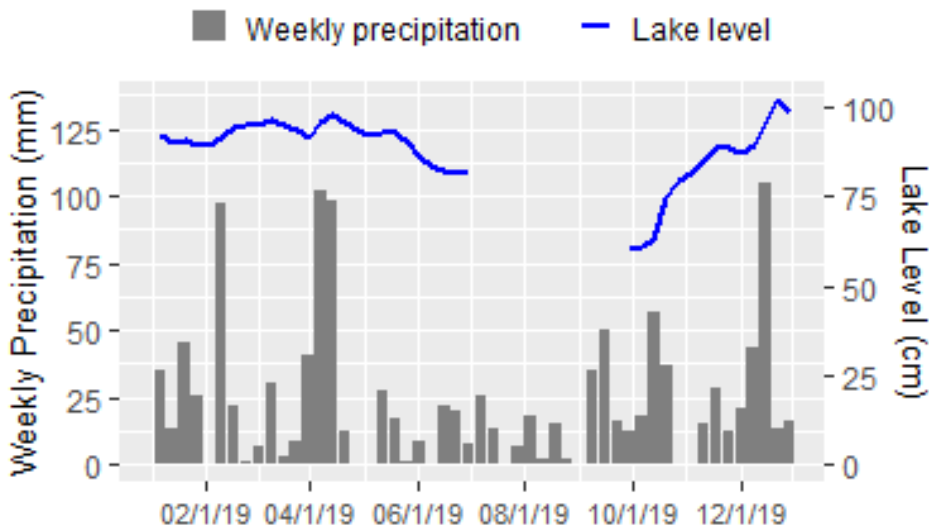
## Continuous lake level and temperature

Lake level and water temperature were recorded continuously by an automated logger. The blue line shows daily averages for Lake Wilderness. Grey lines in the background are temperatures for all other lakes with loggers.



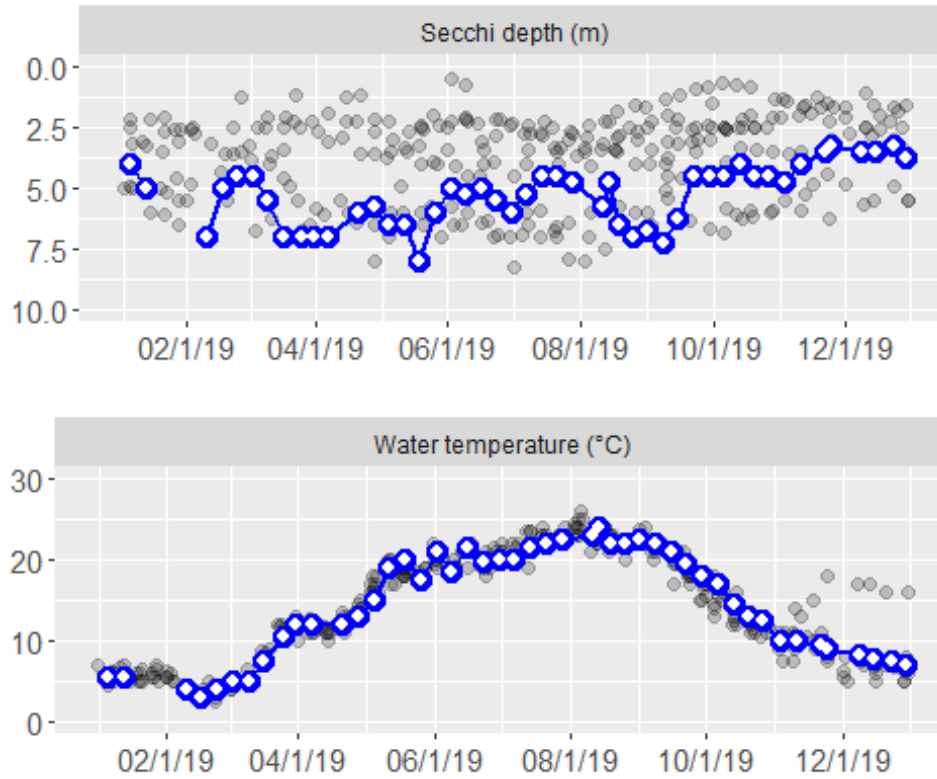
## Hydrology: Lake level and precipitation

Lake level and precipitation were measured year-round. Bars show total weekly precipitation, and the line shows average weekly lake level.



## Year-round Secchi depth and water temperature

Secchi depth and water temperature (at 1 m depth) were measured weekly in 2019. The blue circles (with white centers) and blue line are data for Lake Wilderness. Gaps in the line indicate missed sampling dates. Grey points in the background are results for all other lakes in the Lake Stewardship program.



## Water column profile

In May and August, water was collected at the mid-lake sampling station from three depths in a water-column profile: 1 m, the middle depth of the water column, and 1 m from the lake bottom.

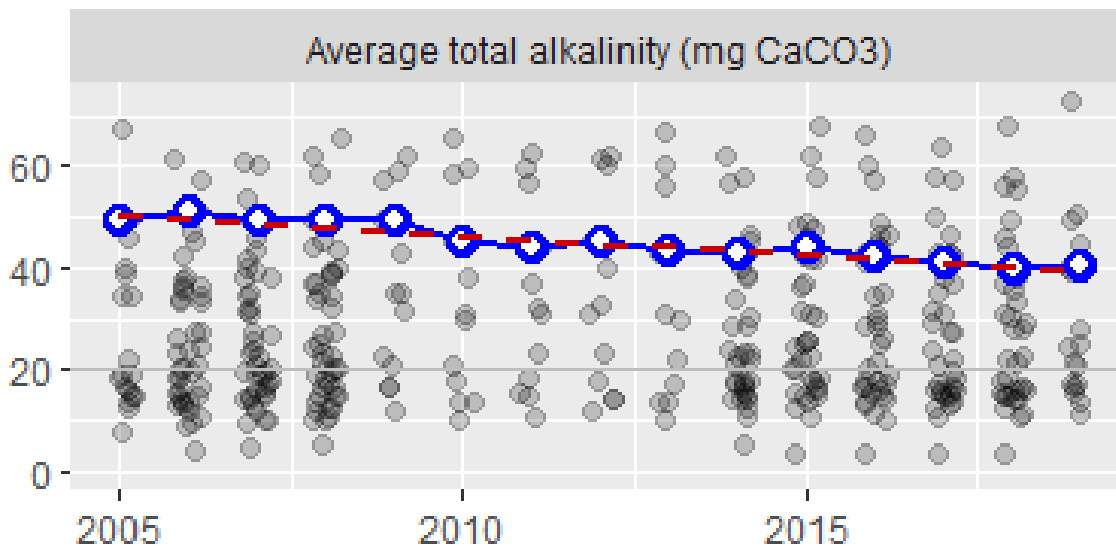
Date	Depth	Temp	Chlor	Pheo	TN	NH3	NO2/3	TP	OPO4
5/19/2019	1.0	20.0	1.8	(1.2)	631	18.3	463.0	14.3	(0.5)
	4.0	15.0	2.6	(1.3)	674	–	–	12.1	–
	8.5	9.0	2.4	(1.3)	463	47.1	212.0	32.6	1.7
8/19/2019	1.0	22.0	1.6	(1.1)	254	5.1	(10.0)	9.9	(0.5)
	4.0	–	1.7	(1.1)	439	–	–	25.7	–
	8.5	–	177.0	721.0	19100	18.5	14.0	2440.0	10.9

Parameter abbreviations are: chlorophyll-a (Chlor), pheophytin (Pheo), total nitrogen (TN), ammonia (NH3), nitrate/nitrite (NO2/3), total phosphorus (TP), orthophosphate (OPO4). Depth is in m, temperature is in °C, and all other parameters are in µg/L. Dashes indicate parameters that were not analyzed for a given sample. Values below the method detection limit (MDL) are enclosed in parentheses and have the value of the MDL substituted.

## Total alkalinity

A lake's ability to resist acidification, also called its buffering capacity, is measured as "total alkalinity." Lakes with total alkalinity less than 20 mg CaCO<sub>3</sub> are considered sensitive to acidification. We measured total alkalinity in May and August (on profile-sampling days) at 1 m depth. In 2019, the average total alkalinity of these two samples was 40.4 mg CaCO<sub>3</sub>.

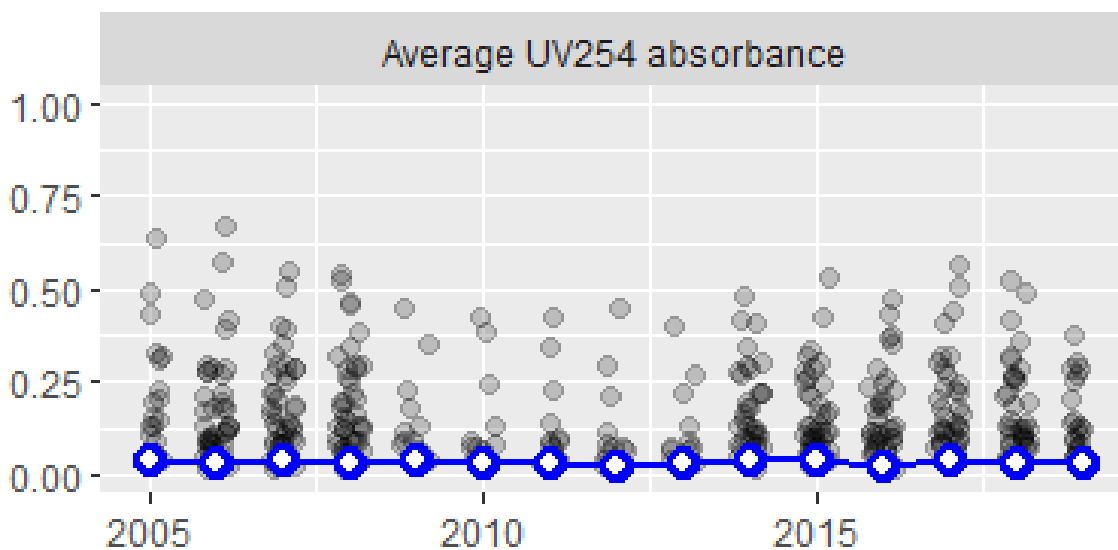
The blue circles (with white centers) and blue line are annual average alkalinity values for Lake Wilderness. Grey points in the background are results for all other lakes in the Lake Stewardship program. The dashed red line shows the long-term trend in alkalinity, with an average change of -9.3 mg CaCO<sub>3</sub> (-18%) per decade.



## Water color

Water color affects a lake's water clarity (and Secchi depth). Water color is measured by shining a specific wavelength of ultraviolet light (254 nm) through a filtered water sample and measuring the percent that was absorbed. We measured UV254 absorbance in May and August (on profile-sampling days) at 1 m depth. In 2019, the average UV254 absorbance of these two samples was 0.03, on a scale where 0 is no absorbance (perfectly clear) and 1 is complete absorbance (perfectly opaque).

The blue circles (with white centers) and blue line are annual average UV absorbance values for Lake Wilderness. Grey points in the background are results for all other lakes in the Lake Stewardship program.



Visit the [King County Lake Stewardship](#) website for more data and information. Data from automated loggers is on the [King County Hydrologic Information Center](#) website.



**King County**

Department of Natural Resources and Parks  
Water and Land Resources Division

**Science and Technical Support Section**

King Street Center, KSC-NR-0704  
201 South Jackson Street, Suite 704  
Seattle, WA 98104

206-477-4800 TTY Relay: 711

[www.kingcounty.gov/EnvironmentalScience](http://www.kingcounty.gov/EnvironmentalScience)