

NEILSON LAKE 2018

Lake Stewardship Monitoring Report

King County Water & Land Resources Division
Science & Technical Support Section
www.kingcounty.gov/EnvironmentalScience

Summary & Recommendations

Thank you to Mark and Wendy Nygren, the volunteer monitors for Neilson Lake.

The key takeaways from the 2018 monitoring season are:

- Neilson Lake continued to have fairly clear water, with moderate nutrient concentrations and algal growth.
- No algal blooms were reported for toxin testing in 2018.

The Lake Stewardship Program recommends:

- Monitoring is a key part of good lake stewardship, building a valuable long-term dataset to guide lake management and detect any future problems. Continue to monitor Neilson Lake through the Lake Stewardship Program.
-

In this report:

- **What We Measure & Why**
- **Water Quality Results & Trends**
 - 2018 monitoring results
 - Long-term annual averages
 - Trends over time
- **Trophic State**
 - Trophic state indices
 - Comparison map
- **Supplemental Data**
 - Summary statistics
 - Water column profile
 - Total alkalinity
 - Water color

What We Measure & Why

- **Secchi depth** is a measure of water clarity or transparency. Secchi depth is shallower when there are more suspended particles in the lake, such as sediment or algae. Secchi depth is also affected by water color, often from tannins or other naturally occurring organic molecules.
- **Water temperature** can affect the growth rates of plants and algae. In addition, cooler or warmer water temperatures favor different species of fish and other aquatic organisms.
- **Chlorophyll-a** is a measure of the amount of algae in a lake. Chlorophyll-a is a pigment necessary for algae to photosynthesize and store energy.
- **Phosphorus** and **nitrogen** are naturally occurring nutrients necessary for growth and reproduction in both plants and animals. Increases in nutrients (especially phosphorus) can lead to more frequent and dense algal blooms.
- The **ratio of total nitrogen to total phosphorus (N:P)** indicates whether nutrient conditions favor the growth of cyanobacteria (blue-green algae). When N:P ratios are near or below 25, cyanobacteria can dominate the algal community. This is important because cyanobacteria have the ability to produce toxins.

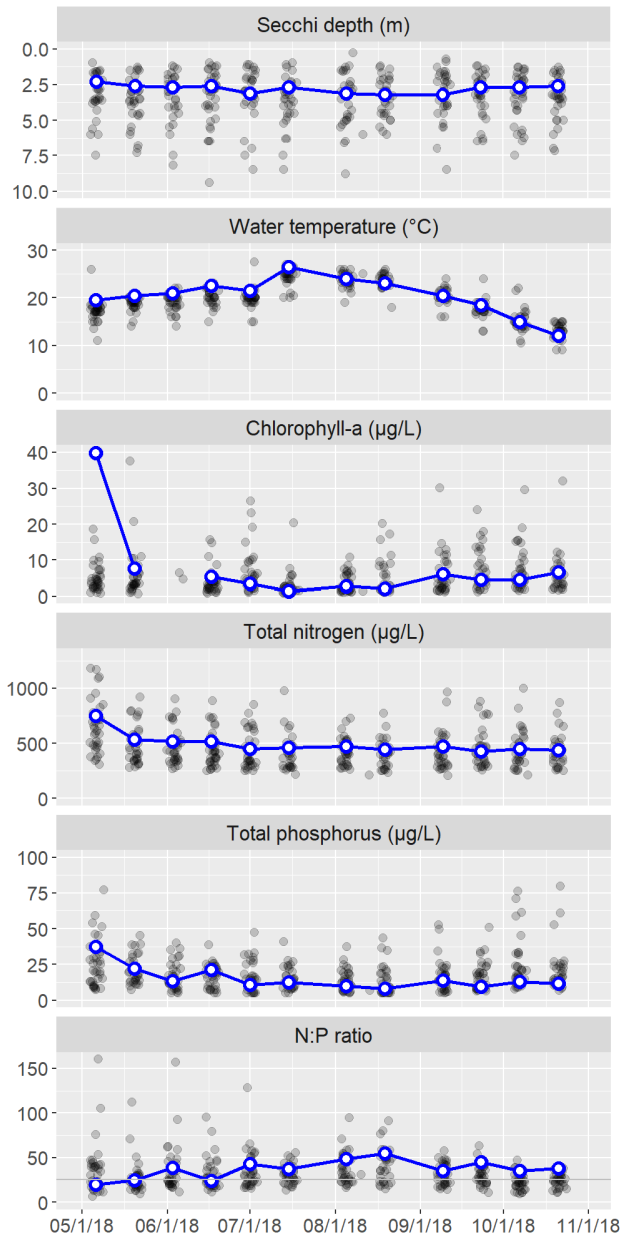
Water Quality Results & Trends

The following graphs show the water-quality parameters that are sampled from May through October, at 1 m depth (additional depths and parameters are measured on profile days; see *Supplemental Data*). The left column of graphs shows results for each sampling date in 2018, and the right column shows average values for each year (May-October averages).

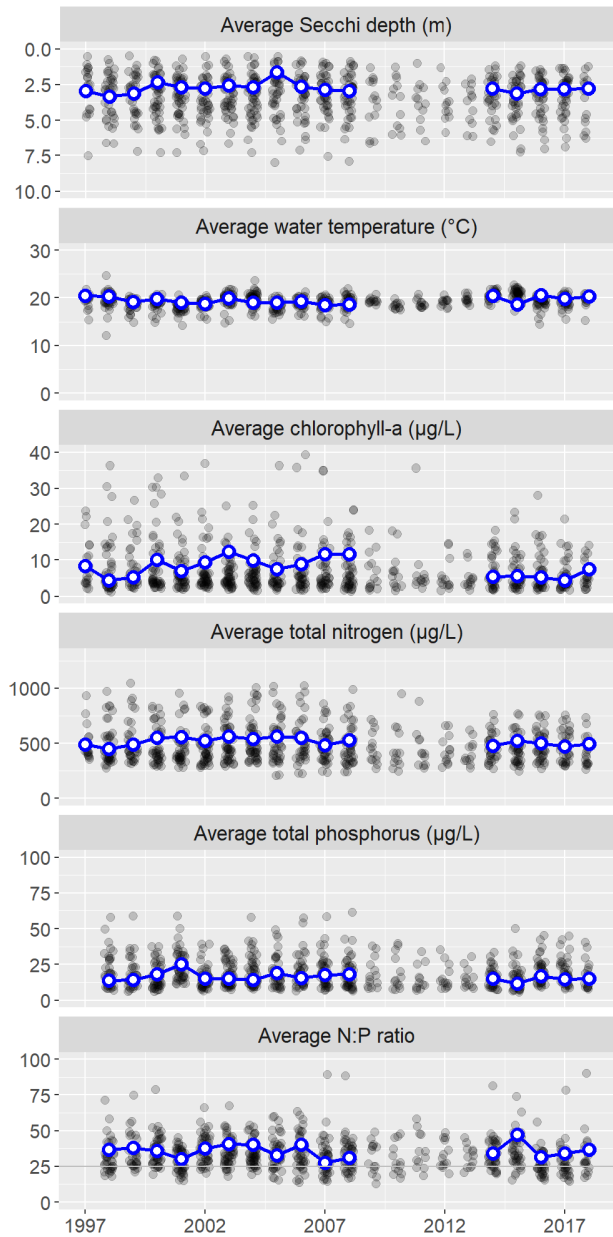
Data for Neilson Lake are the blue circles (with white centers) connected by the blue line. Any gaps in the blue line indicate missed samples. To provide some context for these values, the grey points in the background are results for all other lakes in the Lake Stewardship program.

Any long-term trends in Neilson Lake are drawn with a dashed red line and described further after the graphs. Statistical trend analyses used a seasonal (monthly) Kendall test ($p < 0.05$).

2018 Monitoring Results



Long-Term Annual Averages



Nitrogen-to-phosphorus (N:P) ratios were occasionally below 25, indicating times when the algal community was more likely to be dominated by cyanobacteria (which have the ability to produce toxins).

Neilson Lake does not have any long-term trends.

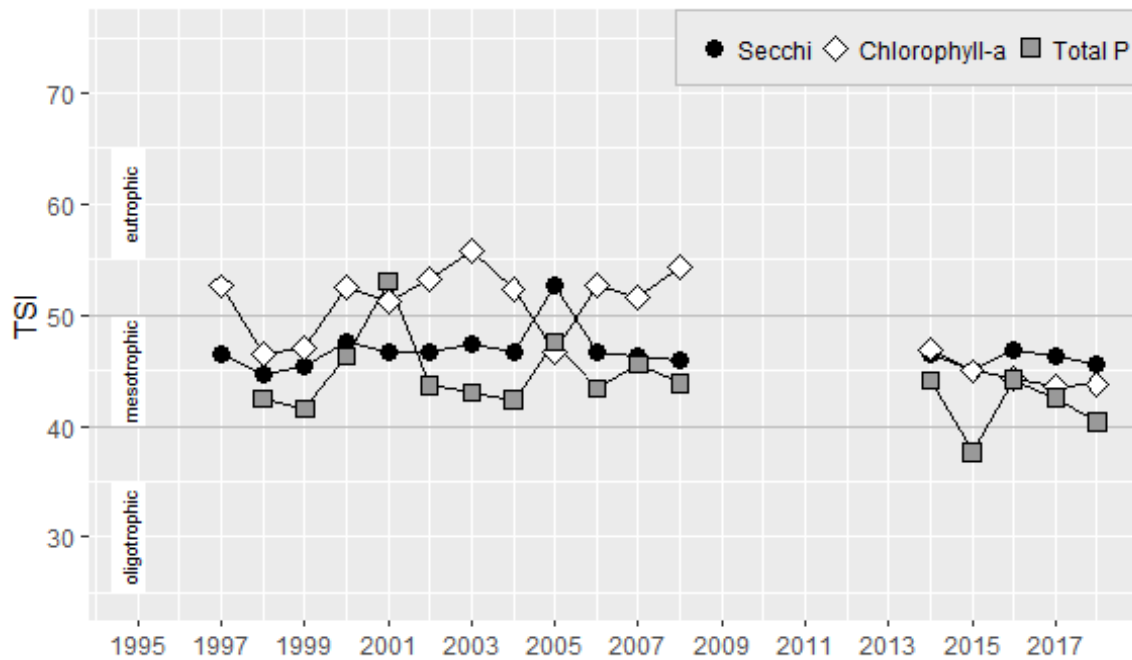
Trophic State

The Trophic State Index (TSI) is a common index of a lake’s overall biological productivity. TSI values are calculated from Secchi depth, chlorophyll-a concentrations, and total phosphorus concentrations. These three TSI estimates are all scaled between 0 and 100.

TSI calculations use average values from June-September, focusing on fairly consistent “summer” conditions. This is in contrast with the annual averages shown above, which also include May and October data.

Oligotrophic lakes (TSI <40) are very clear, with low nutrient concentrations and low algal growth. *Eutrophic* lakes (TSI >50) have less-clear water, with high nutrient concentrations and high algal growth. Eutrophic lakes are more likely to have frequent algal blooms. *Mesotrophic* lakes (TSI 40-50) are in the middle, with fairly clear water, and moderate nutrient concentrations and algal growth. Lakes in lowland King County have a range of different natural trophic states, and human activities may also alter a lake’s trophic state (usually by changing nutrient inputs).

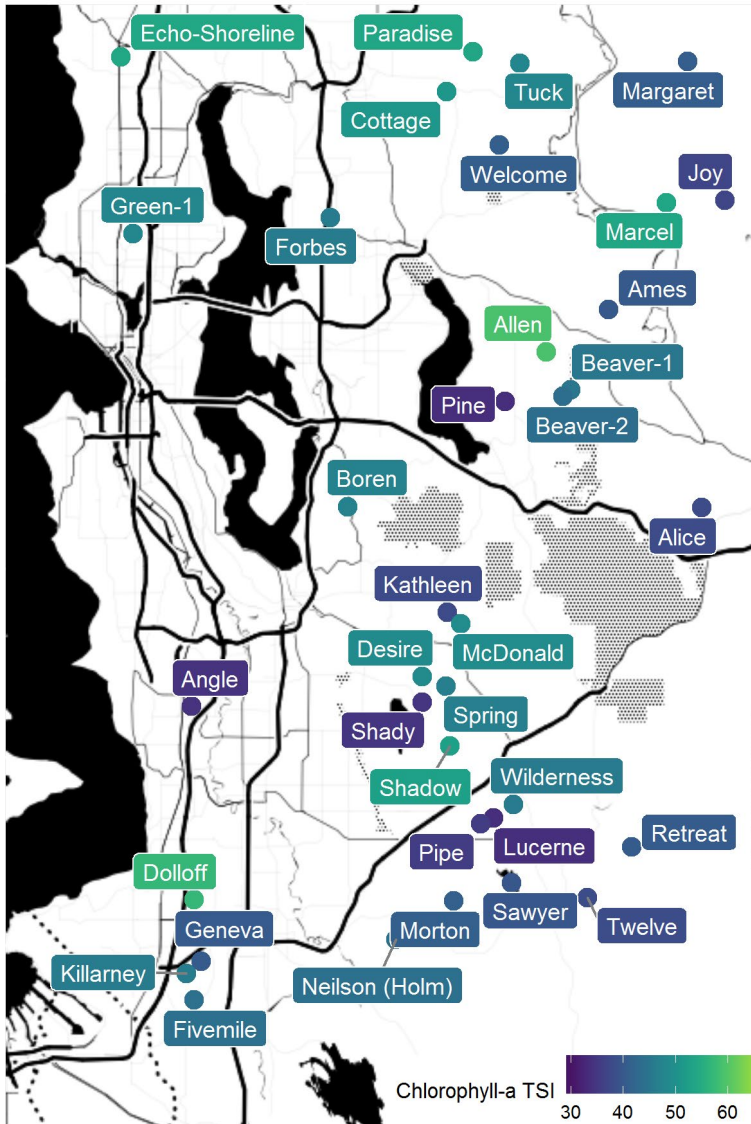
Trophic state indices



In 2018, the TSI values were in the mesotrophic range.

Comparison map

For a comparison with other lakes, this map shows the trophic state for each lake in the King County Lake Stewardship program in 2018. The color of each circle indicates the lake's average chlorophyll-a TSI value for the year.



Supplemental Data

Summary statistics

This table summarizes data from May-October 2018 (1 m depth only), giving the minimum, mean (average), and maximum values for each parameter. To reduce biases from missing data or changes in sampling frequency, monthly means were calculated and then averaged to give an overall mean.

Parameter	Minimum	Mean	Maximum
Secchi depth (m)	2.3	2.8	3.2
Water temperature (°C)	12.0	20.4	26.5
Chlorophyll-a (µg/L)	1.4	7.4	39.8
Total nitrogen (µg/L)	428.0	494.5	748.0
Total phosphorus (µg/L)	8.1	15.2	37.4
N:P ratio	20.0	36.9	54.6

Water column profile

In May and August, water was collected at the mid-lake sampling station from three depths in a water-column profile: 1 m, the middle depth of the water column, and 1 m from the lake bottom.

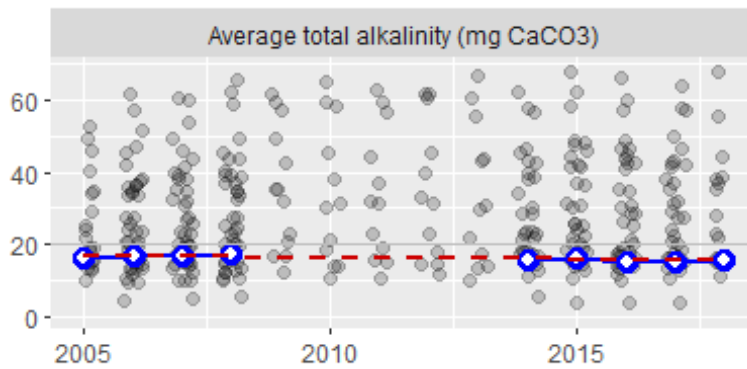
Date	Depth	Temp	Chlor	Pheo	TN	NH3	NO2/3	TP	OPO4
5/20/2018	1	20.5	7.6	(2.0)	536	10.0	(10.0)	21.9	0.8
	4	13.0	7.6	1.2	466	–	–	21.7	–
	8	10.0	–	–	567	68.4	94.1	47.6	5.6
8/19/2018	1	23.0	2.0	(1.0)	442	3.7	(10.0)	8.1	0.8
	4	15.0	7.5	3.4	440	–	–	11.7	–
	8	10.0	–	–	1170	641.0	(10.0)	181.0	19.8

Parameter abbreviations are: chlorophyll-a (Chlor), pheophytin (Pheo), total nitrogen (TN), ammonia (NH3), nitrate/nitrite (NO2/3), total phosphorus (TP), orthophosphate (OPO4). Depth is in m, temperature is in °C, and all other parameters are in µg/L. Dashes indicate parameters that were not analyzed for a given sample. Values below the method detection limit (MDL) are enclosed in parentheses and have the value of the MDL substituted.

Total alkalinity

A lake's ability to resist acidification, also called its buffering capacity, is measured as "total alkalinity." Lakes with total alkalinity less than 20 mg CaCO₃ are considered sensitive to acidification. We measured total alkalinity in May and August (on profile-sampling days) at 1 m depth. In 2018, the average total alkalinity of these two samples was 15.8 mg CaCO₃.

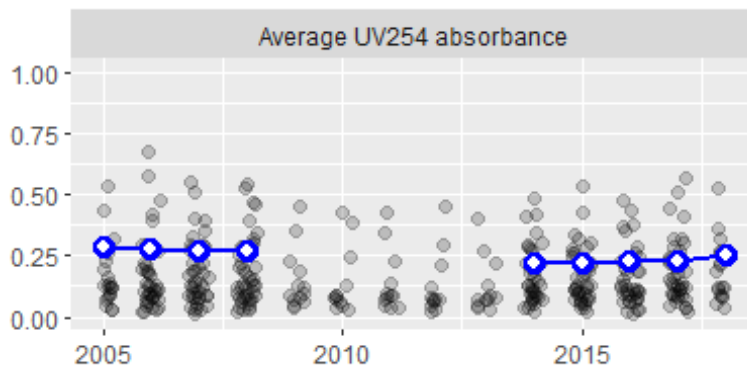
The blue circles (with white centers) and blue line are annual average alkalinity values for Neilson Lake. Grey points in the background are results for all other lakes in the Lake Stewardship program. The dashed red line shows the long-term trend in alkalinity, with an average change of -1 mg CaCO₃ (-6%) per decade.



Water color

Water color affects a lake's water clarity (and Secchi depth). Water color is measured by shining a specific wavelength of ultraviolet light (254 nm) through a filtered water sample and measuring the percent that was absorbed. We measured UV254 absorbance in May and August (on profile-sampling days) at 1 m depth. In 2018, the average UV254 absorbance of these two samples was 0.25, on a scale where 0 is no absorbance (perfectly clear) and 1 is complete absorbance (perfectly opaque).

The blue circles (with white centers) and blue line are annual average UV absorbance values for Neilson Lake. Grey points in the background are results for all other lakes in the Lake Stewardship program.



King County

Department of Natural Resources and Parks
Water and Land Resources Division
Science and Technical Support Section
King Street Center, KSC-NR-0600
201 South Jackson Street, Suite 600
Seattle, WA 98104
206-477-4800 TTY Relay: 711
www.kingcounty.gov/EnvironmentalScience