

# **LAKE KATHLEEN 2018**

## **Lake Stewardship Monitoring Report**

King County Water & Land Resources Division  
Science & Technical Support Section  
[www.kingcounty.gov/EnvironmentalScience](http://www.kingcounty.gov/EnvironmentalScience)

---

### **Summary & Recommendations**

*Thank you to Keith Lanan and Kurt Tokita, the volunteer monitors for Lake Kathleen.*

#### **The key takeaways from the 2018 monitoring season are:**

- Lake Kathleen had fairly clear water, with moderate nutrient concentrations and fairly low algal growth.
- Long-term trends suggest that water quality in Lake Kathleen has been improving over time, with decreasing phosphorus and chlorophyll concentrations, and deeper Secchi depths.
- Algal blooms were sampled for toxin testing in June. Toxin testing found low concentrations of algal toxins, well below the Washington State Recreational Guidelines.

#### **The Lake Stewardship Program recommends:**

- Stay alert for toxic algae blooms in Lake Kathleen – increase people’s awareness of toxic algae, and their ability to identify which algae are potentially toxic. Any potentially toxic blooms should be reported to the King County Lake Stewardship Program and sampled for toxin analysis.
  - Explore what has helped to decrease phosphorus concentrations in Lake Kathleen – and encourage those trends to continue. Reducing nutrient concentrations will likely help to reduce algal blooms.
  - Monitoring is a key part of good lake stewardship, building a valuable long-term dataset to guide lake management and detect any future problems. Continue to monitor Lake Kathleen through the Lake Stewardship Program.
-

### ***In this report:***

- **What We Measure & Why**
- **Water Quality Results & Trends**
  - 2018 monitoring results
  - Long-term annual averages
  - Trends over time
- **Trophic State**
  - Trophic state indices
  - Comparison map
- **Supplemental Data**
  - Summary statistics
  - Hydrology: Lake level and precipitation
  - Water column profile
  - Total alkalinity
  - Water color

## **What We Measure & Why**

- **Secchi depth** is a measure of water clarity or transparency. Secchi depth is shallower when there are more suspended particles in the lake, such as sediment or algae. Secchi depth is also affected by water color, often from tannins or other naturally occurring organic molecules.
- **Water temperature** can affect the growth rates of plants and algae. In addition, cooler or warmer water temperatures favor different species of fish and other aquatic organisms.
- **Chlorophyll-a** is a measure of the amount of algae in a lake. Chlorophyll-a is a pigment necessary for algae to photosynthesize and store energy.
- **Phosphorus** and **nitrogen** are naturally occurring nutrients necessary for growth and reproduction in both plants and animals. Increases in nutrients (especially phosphorus) can lead to more frequent and dense algal blooms.
- The **ratio of total nitrogen to total phosphorus (N:P)** indicates whether nutrient conditions favor the growth of cyanobacteria (blue-green algae). When N:P ratios are near or below 25, cyanobacteria can dominate the algal community. This is important because cyanobacteria have the ability to produce toxins.

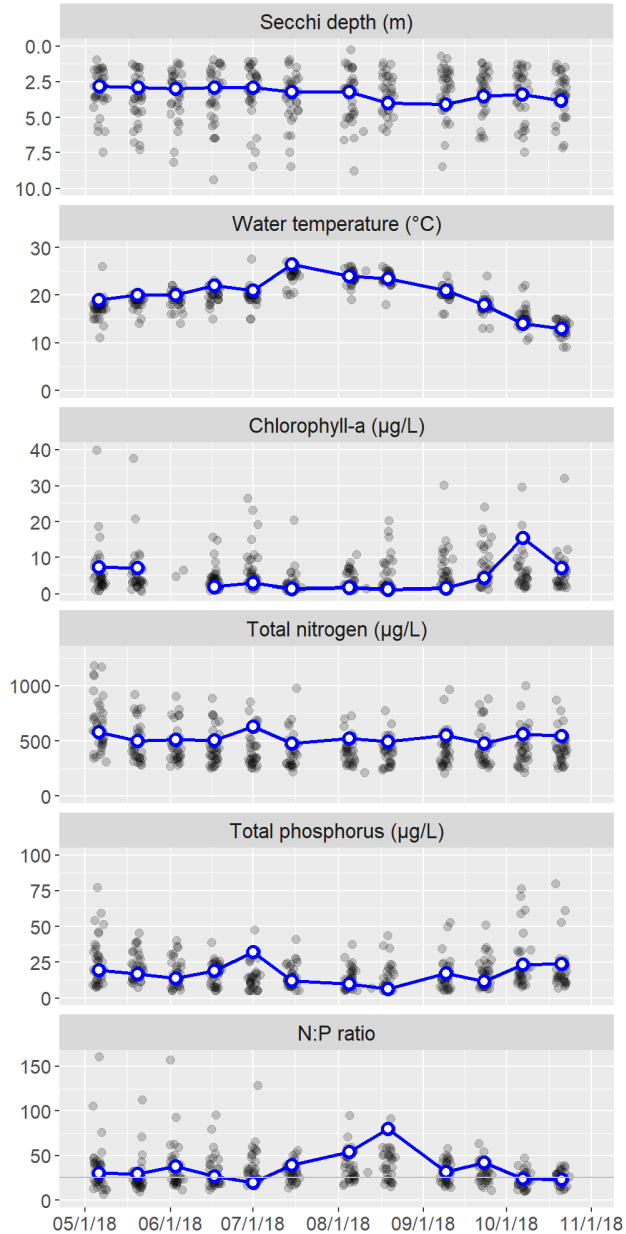
## **Water Quality Results & Trends**

The following graphs show the water-quality parameters that are sampled from May through October, at 1 m depth (additional depths and parameters are measured on profile days; see *Supplemental Data*). The left column of graphs shows results for each sampling date in 2018, and the right column shows average values for each year (May-October averages).

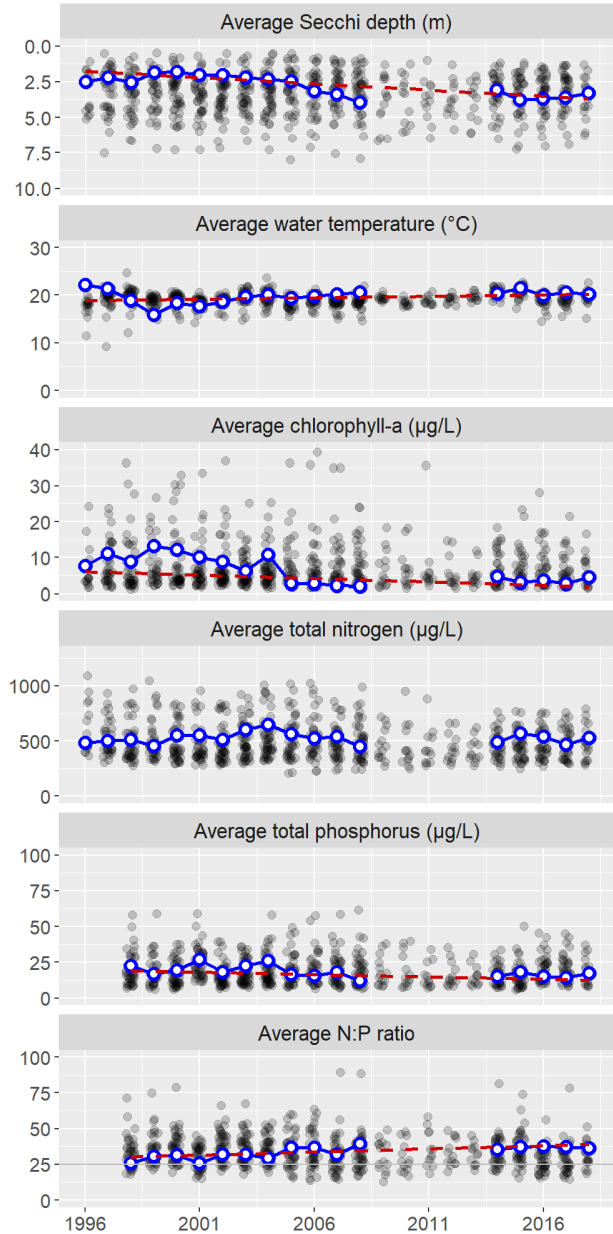
Data for Lake Kathleen are the blue circles (with white centers) connected by the blue line. Any gaps in the blue line indicate missed samples. To provide some context for these values, the grey points in the background are results for all other lakes in the Lake Stewardship program.

Any long-term trends in Lake Kathleen are drawn with a dashed red line and described further after the graphs. Statistical trend analyses used a seasonal (monthly) Kendall test ( $p < 0.05$ ).

## 2018 Monitoring Results



## Long-Term Annual Averages



Nitrogen-to-phosphorus (N:P) ratios were above 25 for most of the monitoring season. This typically indicates a low likelihood for the algal community to be dominated by

cyanobacteria (which have the ability to produce toxins). Contrary to this expectation, however, the June algal bloom samples did contain toxin-producing cyanobacteria.

The table below gives more details about the long-term trends. Results are presented as an average amount and percent of change per decade (the increase or decrease over ten years). Percent change is calculated as the percent of the estimated value in 1996, when monitoring started.

| Parameter         | Change per Decade | (%)    |
|-------------------|-------------------|--------|
| Secchi depth      | 0.87 m            | (50%)  |
| Water temperature | 0.56 °C           | (2.9%) |
| Chlorophyll-a     | -2 µg/L           | (-32%) |
| Total phosphorus  | -3.1 µg/L         | (-16%) |
| N:P ratio         | 4.4               | (15%)  |

Long-term trends suggest that water quality in Lake Kathleen has been improving over time, with decreasing phosphorus and chlorophyll concentrations, and deeper Secchi depths.

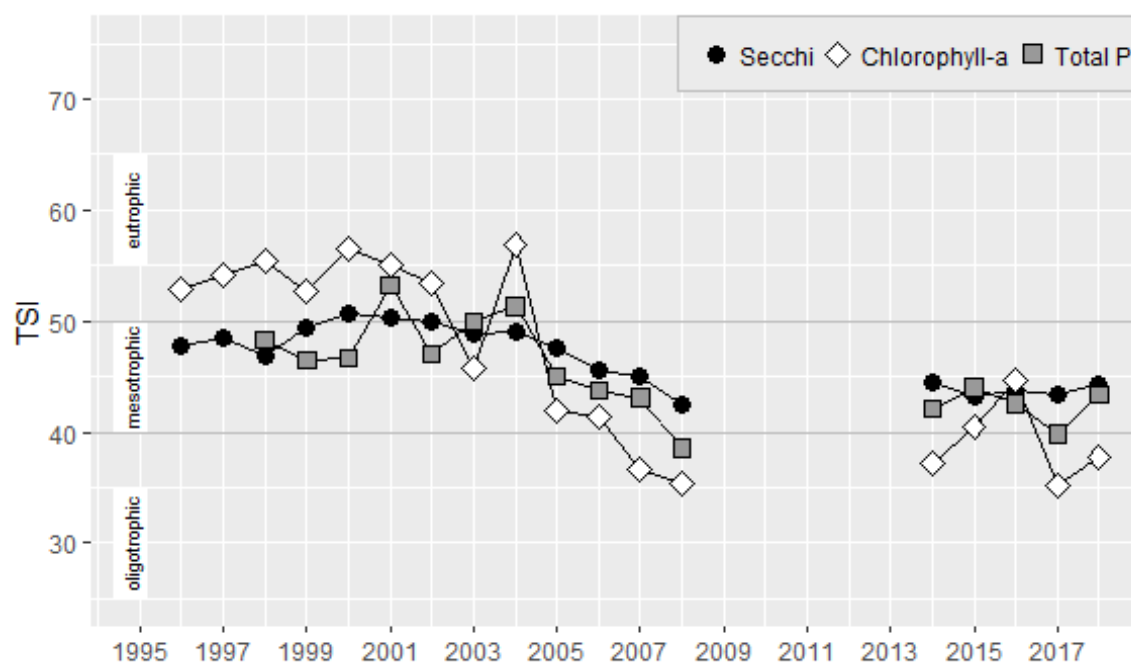
## **Trophic State**

The Trophic State Index (TSI) is a common index of a lake's overall biological productivity. TSI values are calculated from Secchi depth, chlorophyll-a concentrations, and total phosphorus concentrations. These three TSI estimates are all scaled between 0 and 100.

TSI calculations use average values from June-September, focusing on fairly consistent "summer" conditions. This is in contrast with the annual averages shown above, which also include May and October data.

*Oligotrophic* lakes (TSI <40) are very clear, with low nutrient concentrations and low algal growth. *Eutrophic* lakes (TSI >50) have less-clear water, with high nutrient concentrations and high algal growth. Eutrophic lakes are more likely to have frequent algal blooms. *Mesotrophic* lakes (TSI 40-50) are in the middle, with fairly clear water, and moderate nutrient concentrations and algal growth. Lakes in lowland King County have a range of different natural trophic states, and human activities may also alter a lake's trophic state (usually by changing nutrient inputs).

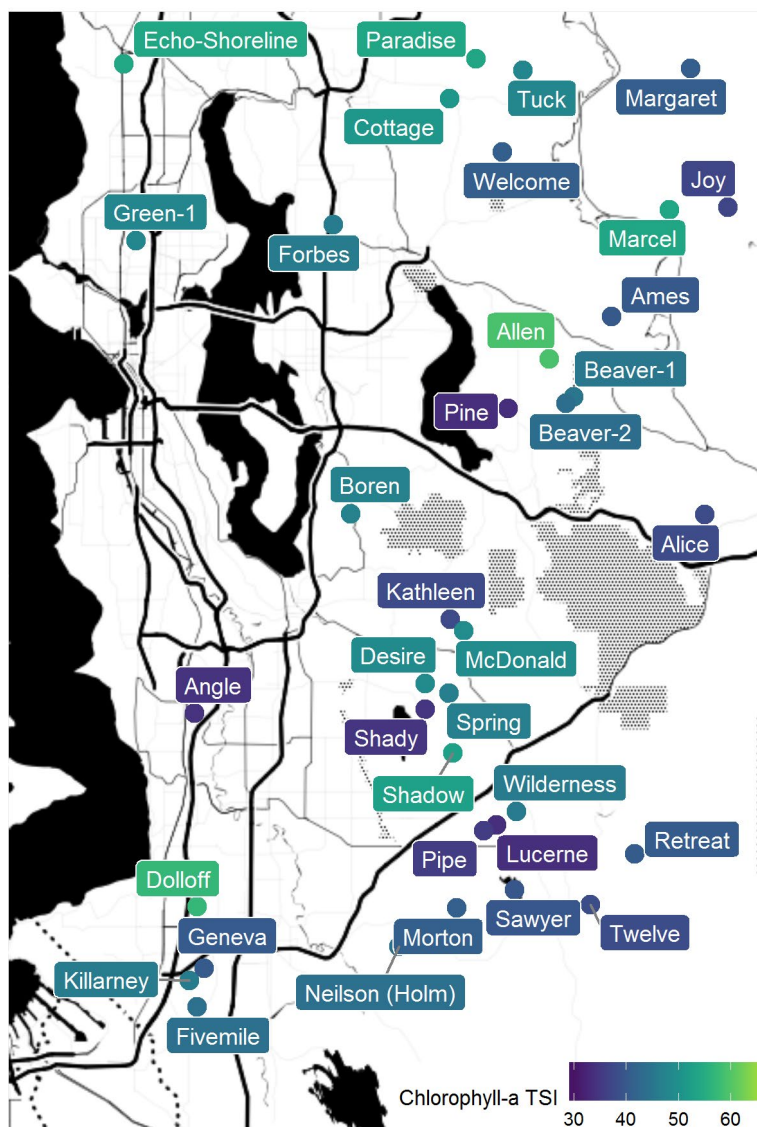
## **Trophic state indices**



In 2018, the TSI values were in the mesotrophic or upper oligotrophic range.

## Comparison map

For a comparison with other lakes, this map shows the trophic state for each lake in the King County Lake Stewardship program in 2018. The color of each circle indicates the lake's average chlorophyll-a TSI value for the year.



## Supplemental Data

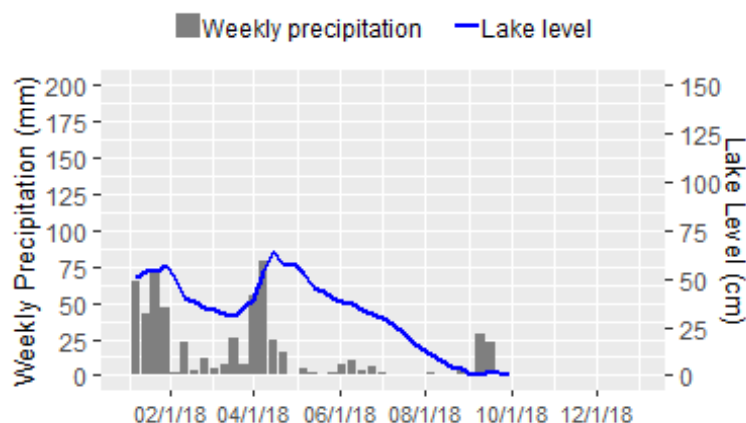
### Summary statistics

This table summarizes data from May-October 2018 (1 m depth only), giving the minimum, mean (average), and maximum values for each parameter. To reduce biases from missing data or changes in sampling frequency, monthly means were calculated and then averaged to give an overall mean.

| Parameter               | Minimum | Mean  | Maximum |
|-------------------------|---------|-------|---------|
| Secchi depth (m)        | 2.8     | 3.3   | 4.1     |
| Water temperature (°C)  | 13.0    | 20.2  | 26.5    |
| Chlorophyll-a (µg/L)    | 1.2     | 4.4   | 15.4    |
| Total nitrogen (µg/L)   | 476.0   | 529.8 | 628.0   |
| Total phosphorus (µg/L) | 6.2     | 17.1  | 32.0    |
| N:P ratio               | 19.6    | 36.4  | 79.5    |

### Hydrology: Lake level and precipitation

Lake level and precipitation were recorded year-round. Bars show total weekly precipitation, and the line shows average weekly lake level.



## Water column profile

In May and August, water was collected at the mid-lake sampling station from three depths in a water-column profile: 1 m, the middle depth of the water column, and 1 m from the lake bottom.

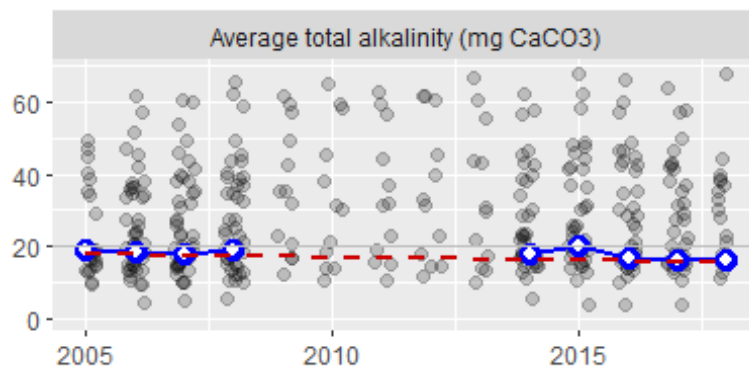
| Date      | Depth | Temp | Chlor | Pheo  | TN  | NH3 | NO2/3  | TP    | OPO4 |
|-----------|-------|------|-------|-------|-----|-----|--------|-------|------|
| 5/20/2018 | 1     | 20.0 | 7.1   | 2.8   | 498 | 2.5 | (10.0) | 17.0  | 1.2  |
|           | 3     | 13.0 | 26.2  | 4.8   | 427 | –   | –      | 21.1  | –    |
|           | 5     | 9.0  | 53.4  | (1.0) | 550 | 2.2 | (10.0) | 45.9  | 0.7  |
| 8/19/2018 | 1     | 23.5 | 1.2   | (1.1) | 493 | 5.5 | (10.0) | 6.2   | 0.8  |
|           | 3     | 22.0 | 4.7   | 2.2   | 480 | –   | –      | 35.5  | –    |
|           | 5     | 14.0 | 212.0 | –     | 843 | 4.6 | (10.0) | 169.0 | 0.6  |

Parameter abbreviations are: chlorophyll-a (Chlor), pheophytin (Pheo), total nitrogen (TN), ammonia (NH3), nitrate/nitrite (NO2/3), total phosphorus (TP), orthophosphate (OPO4). Depth is in m, temperature is in °C, and all other parameters are in µg/L. Dashes indicate parameters that were not analyzed for a given sample. Values below the method detection limit (MDL) are enclosed in parentheses and have the value of the MDL substituted.

## Total alkalinity

A lake's ability to resist acidification, also called its buffering capacity, is measured as "total alkalinity." Lakes with total alkalinity less than 20 mg CaCO<sub>3</sub> are considered sensitive to acidification. We measured total alkalinity in May and August (on profile-sampling days) at 1 m depth. In 2018, the average total alkalinity of these two samples was 16.1 mg CaCO<sub>3</sub>.

The blue circles (with white centers) and blue line are annual average alkalinity values for Lake Kathleen. Grey points in the background are results for all other lakes in the Lake Stewardship program. The dashed red line shows the long-term trend in alkalinity, with an average change of -1.9 mg CaCO<sub>3</sub> (-11%) per decade.

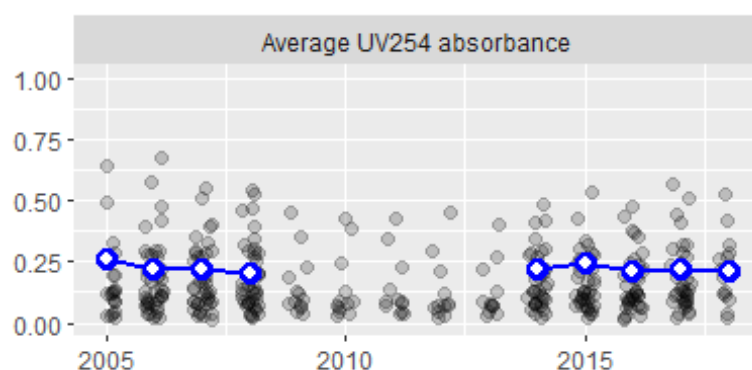




## Water color

Water color affects a lake's water clarity (and Secchi depth). Water color is measured by shining a specific wavelength of ultraviolet light (254 nm) through a filtered water sample and measuring the percent that was absorbed. We measured UV254 absorbance in May and August (on profile-sampling days) at 1 m depth. In 2018, the average UV254 absorbance of these two samples was 0.22, on a scale where 0 is no absorbance (perfectly clear) and 1 is complete absorbance (perfectly opaque).

The blue circles (with white centers) and blue line are annual average UV absorbance values for Lake Kathleen. Grey points in the background are results for all other lakes in the Lake Stewardship program.



### King County

Department of Natural Resources and Parks  
Water and Land Resources Division  
**Science and Technical Support Section**  
King Street Center, KSC-NR-0600  
201 South Jackson Street, Suite 600  
Seattle, WA 98104  
206-477-4800 TTY Relay: 711  
[www.kingcounty.gov/EnvironmentalScience](http://www.kingcounty.gov/EnvironmentalScience)