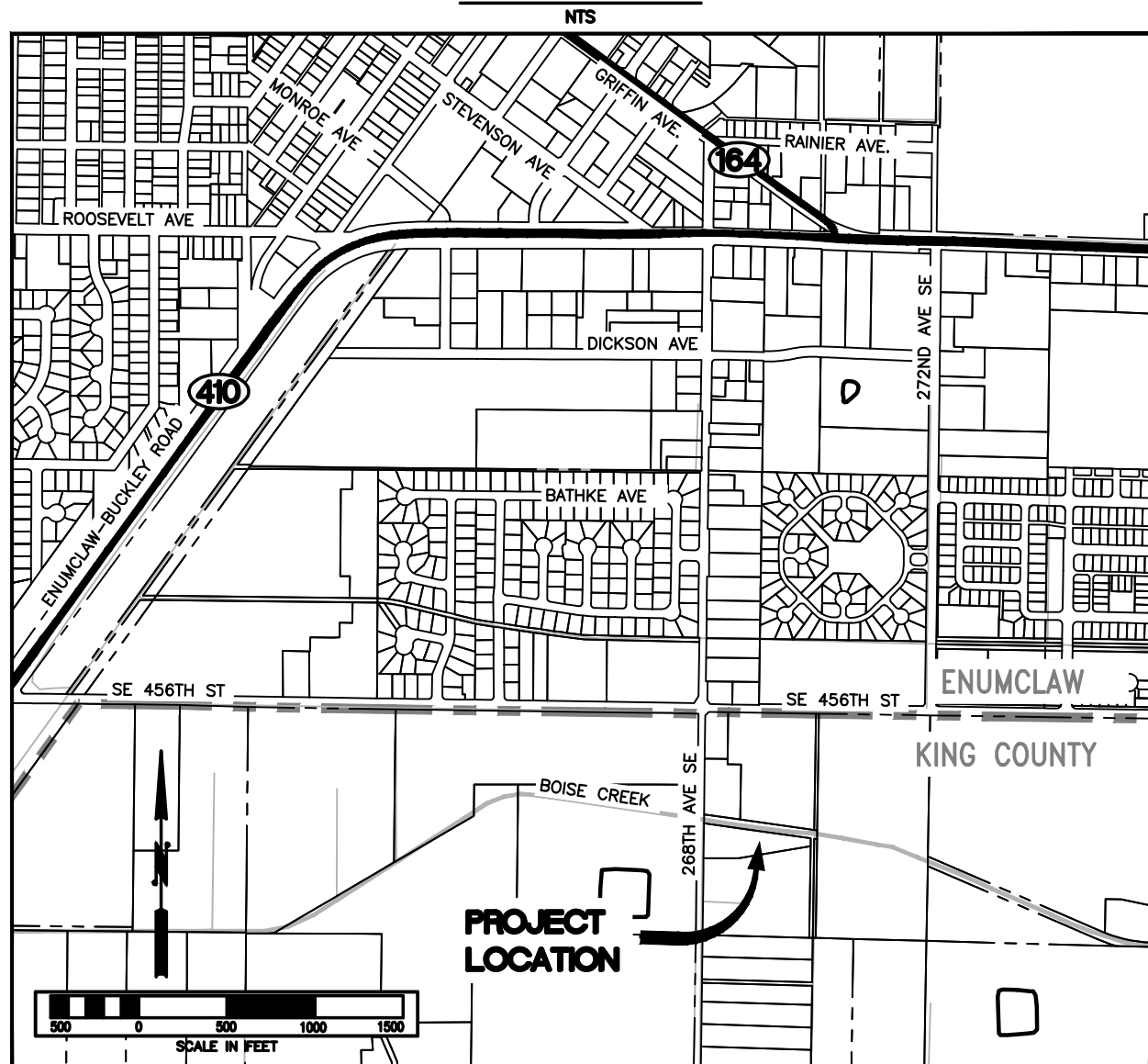


VICINITY MAP



SHEET INDEX

SHEET	DESCRIPTION
1	VICINITY MAP AND SHEET INDEX
2	WOOD PLACEMENT PLAN

MIDDLE BOISE CREEK EVANS LARGE WOOD PLACEMENT

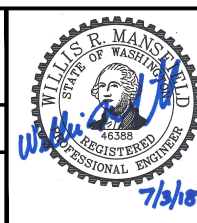


Know what's below.
Call before you dig.
(UNDERGROUND UTILITY LOCATIONS ARE APPROX.)

NUM.	REVISION	BY	DATE
NUM.	RECORD CHANGES APPROVED	BY	DATE

FIELD BOOK: 2012-1	3/2012	APPROVED: WILLIS MANSFIELD	7/2018
SURVEYED: MR/JW	3/2012	PROJECT MANAGER: JOSH LATTERELL	7/2018
SURVEY BASE MAP: M. RADELLA	4/2012	DESIGNED: JOSH LATTERELL	7/2018
CHECKED: B. PENDERGAST	4/2012		
		CAD DESIGN: KEVIN WARD	7/2018

PROJECT No.	1129147
CONTRACT No.	-



King County
Department of Natural Resources and Parks
Water and Land Resources Division
Stormwater Services Section
Capital Services Unit
Christie True, Director

MIDDLE BOISE CREEK EVANS LARGE WOOD PLACEMENT
VICINITY MAP AND SHEET INDEX

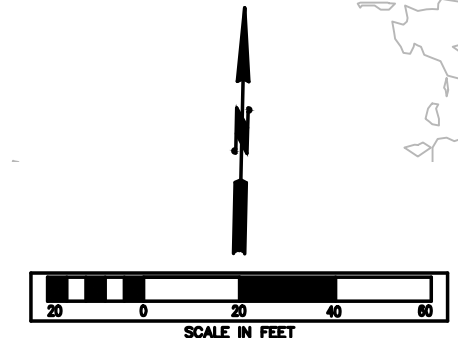
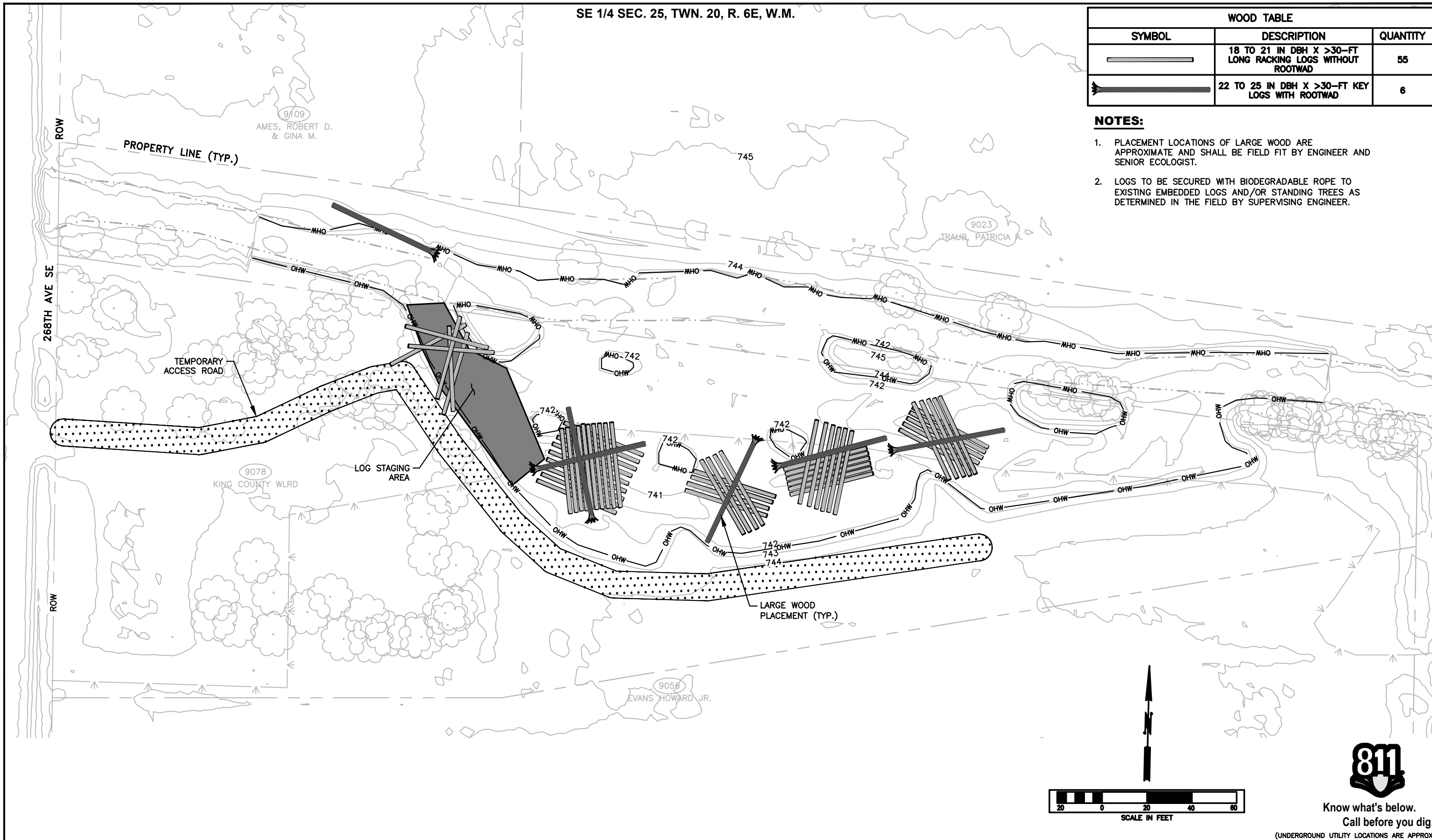
SHEET	1
OF	2
SHEETS	
2018-06	

I:\2018-06_MiddleBoise_Evans_Restoration\DWG\18-06_COV.dwg, 7/3/2018 2:51:09 PM, kward

WOOD TABLE		
SYMBOL	DESCRIPTION	QUANTITY
	18 TO 21 IN DBH X >30-FT LONG RACKING LOGS WITHOUT ROOTWAD	55
	22 TO 25 IN DBH X >30-FT KEY LOGS WITH ROOTWAD	6

NOTES:

1. PLACEMENT LOCATIONS OF LARGE WOOD ARE APPROXIMATE AND SHALL BE FIELD FIT BY ENGINEER AND SENIOR ECOLOGIST.
2. LOGS TO BE SECURED WITH BIODEGRADABLE ROPE TO EXISTING EMBEDDED LOGS AND/OR STANDING TREES AS DETERMINED IN THE FIELD BY SUPERVISING ENGINEER.



Know what's below.
Call before you dig.

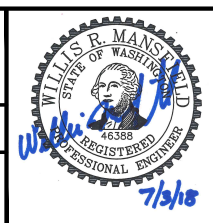
(UNDERGROUND UTILITY LOCATIONS ARE APPROX.)

FIELD BOOK:	NUM.	REVISION	BY	DATE
2012-1	3/2012			
SURVEYED: MR/JW	3/2012			
SURVEY BASE MAP: M. RADELLA	4/2012			
CHECKED: B. PENDERGAST	4/2012			

NUM.	RECORD CHANGES APPROVED	BY	DATE

APPROVED:	WILLIS MANSFIELD	7/2018
PROJECT MANAGER:	JOSH LATTERELL	7/2018
DESIGNED:	JOSH LATTERELL	7/2018
CAD DESIGN:	KEVIN WARD	7/2018

PROJECT No. 1129147
CONTRACT No. -



King County
Department of Natural Resources and Parks
Water and Land Resources Division
Stormwater Services Section
Capital Services Unit
Christie True, Director

**MIDDLE BOISE CREEK
EVANS LARGE WOOD PLACEMENT**

WOOD PLACEMENT PLAN

SHEET
2
OF
2
SHEETS
2018-06

I:\2018-06_MiddleBoise_Evans_Restoration\DWG\18-06_WOOD.dwg, 7/3/2018 2:51:11 PM, kward