

Scoping Meeting

Pacific Right Bank Flood Protection Project

Agenda

- 6:30 Doors Open
- 6:40 Welcome and Introductions
- 6:45 Presentation
- 7:00 Open House
- 8:00 Closing Remarks

Purpose and Need for the Project

The purpose of the flood protection project is to substantially reduce the potential for river flooding in the City of Pacific and improve environmental conditions along this portion of the White River.

Why Are We Here?

The purpose of tonight's meeting is to gather input from all interested stakeholders about concerns and ideas related to the project. Information from scoping will be used to develop project alternatives to be evaluated in the EIS.

Environmental Review Process

An Environmental Impact Statement (EIS) is being prepared for the project under the State Environmental Policy Act (SEPA).

Key steps in the EIS process:

- Scoping issues and topics
- Developing alternatives
- Evaluating alternatives, including No Action
- Selecting a preferred alternative

Project Timeline



Project Area

Pacific Right Bank Flood Protection Project



White River Sediment

Pacific Right Bank Flood Protection Project



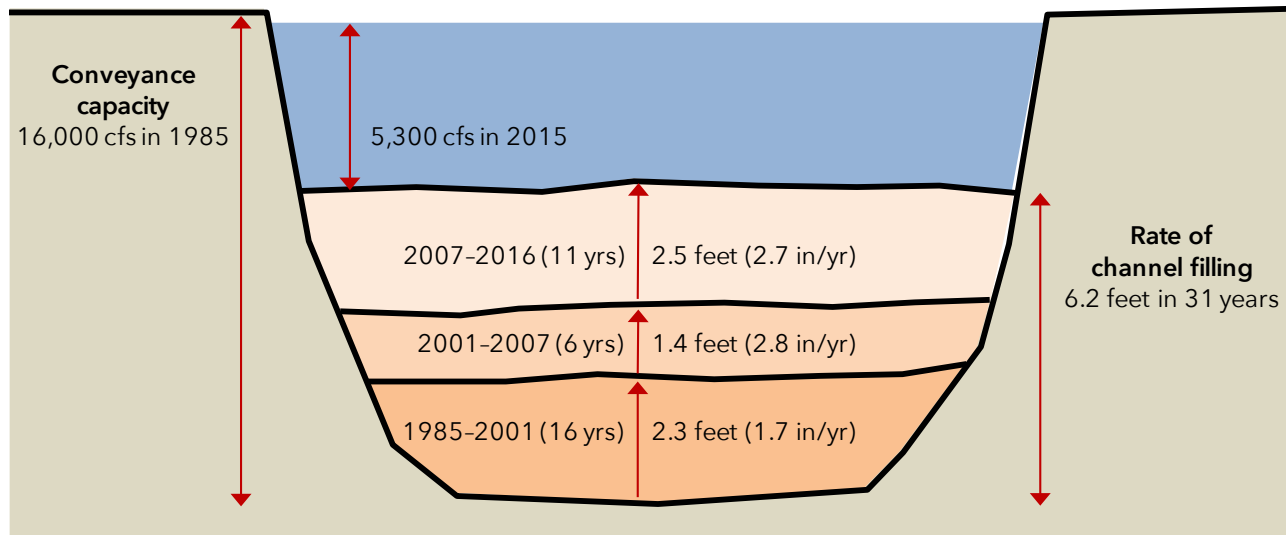
Dredging and levee construction in the 1920s



Gravel accumulation across from the park



Surveying



Sediment deposition and loss of channel conveyance between A Street and Steward Road. Approximately 15,000-20,000 cubic yards of sediment are deposited in this reach of the White River each year (equivalent to 1,500 to 2,000 dump truck loads).

Flooding Problems

Pacific Right Bank Flood Protection Project



Current damage to the 1919 concrete revetment along the park



White River flows overtopping the right bank levee south of the park, December 2015



Flooding in the White River Estates neighborhood and Government Canal, January 2009



Flooding of the White River Estates neighborhood, January 2009



Floodwaters inundating the park and 4th Avenue and flowing south toward the White River Estates neighborhood, January 2009

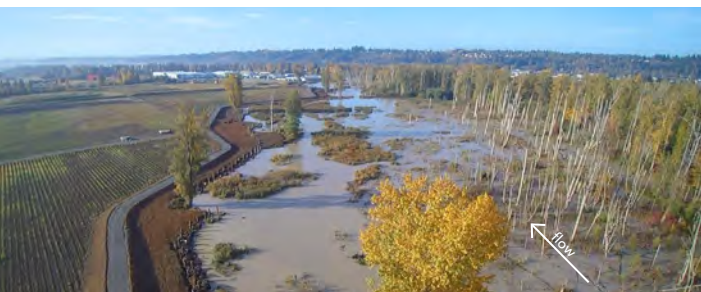


Floodwaters inundating the park, November 2006

Flood Protection Techniques

Pacific Right Bank Flood Protection Project

Setback Levee



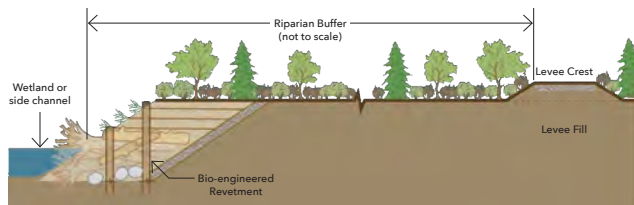
The new Countyline setback levee and log bioretment constructed on the left bank in 2017



Log bioretment, riparian buffer and setback levee constructed on the left bank in 2017



Log bioretment providing bank protection against erosion and channel migration



Example schematic cross-section

Rock Facing on Levee



Bank protection against erosion and channel migration

Flood Walls



Floodwall preventing overbank flooding at residential area



Low floodwall



High floodwall along Green River in King County

Construction Considerations

Pacific Right Bank Flood Protection Project



Levee and logjam construction showing in-water work on Countyline project in 2016



Levee removal



Water truck providing dust control



Pile driving



Construction along roadway



Levee and log biorevetment construction, Countyline project 2017



Heavy equipment

Park and River Use

Pacific Right Bank Flood Protection Project

Pacific City Park



Aerial view, February 2017

2017 Pacific Days



Arts & crafts, food vendors, and entertainment



Shoreline use at Pacific City Park



Food vendors

Housing

Pacific Right Bank Flood Protection Project



Apartments along 4th Avenue, west of the park



Manufactured home and HESCOs, along 3rd Place SE



Houses along 3rd Avenue, north of the park



Megan's Court Apartments



Houses between 3rd Avenue and 3rd Place

Built Environment

Pacific Right Bank Flood Protection Project

Public Utilities



Stormwater catch basin along 3rd Avenue



Stormwater swale near 4th Avenue apartments



Stormwater detention pond near Hawthorne Avenue



Stormwater ditch along 3rd Avenue, north of the park

Aesthetics, Light and Glare



Streetlight



3rd Avenue, northeast of the park



County-owned property between the river and White River Drive

Transportation



Bike lane and Route 917 bus stop at 3rd Avenue and Pacific



Existing bike lane along 3rd Avenue, west of the park

Historic and Cultural Resources

Pacific Right Bank Flood Protection Project



1936 aerial image showing former river channels in the project area



BNSF bridge behind former highway bridge, viewing upriver from park, ca. 1917



The Muckleshoot, Nisqually, Puyallup, and Yakama peoples traditionally used the White-Stuck River Valley



Items found in the former dump site at Pacific City Park

Geology & Soils and Environmental Health

Pacific Right Bank Flood Protection Project



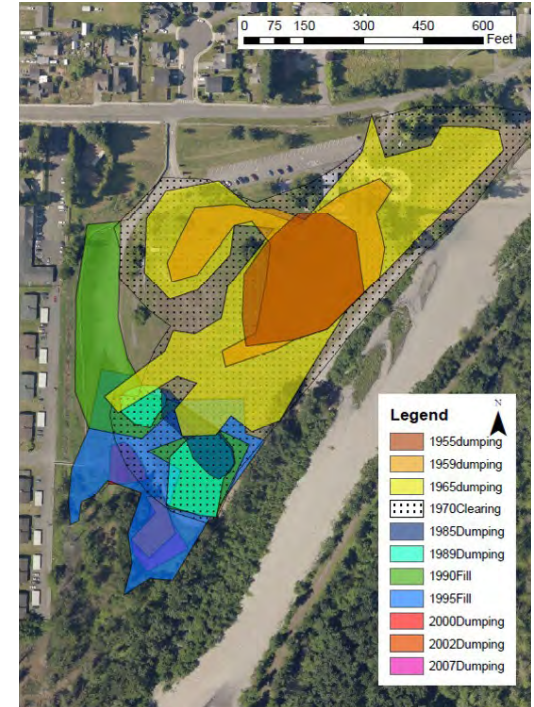
Test pits excavated in the park



Collecting soil and groundwater samples in the park.



Items found in test pits excavated in the park



History of dumping – Pacific City Park



Collecting geotechnical data



Soil cores collected in the park

Natural Environment

Pacific Right Bank Flood Protection Project

Water • Wetlands • Vegetation, Fish & Wildlife • Land & Shoreline Use



Fish relocation before in-water work



Wetland with woody debris



Forested wetland



Bald eagles live near the project area



White River Chinook fry near Pacific City Park



White River spring Chinook spawning near Pacific City Park



Beavers are busy near the project area

Anything Missing?

Pacific Right Bank Flood Protection Project

