

King County Flood Control District Advisory Committee

August 5, 2013

Renton Community Center

PRELIMINARY DRAFT Financial Plan

- Revenues
 - Flood District Levy
 - Grants – State funding of \$4.1M for Cedar River!
- Expenditures
 - District Administration
 - Operating Programs
 - Capital
- Fund Balance Requirements

PRELIMINARY DRAFT Operating

Flood District Work Program

- Flood Preparedness, Regional Flood Warning Center, and Post Flood Recovery
- Planning, Grants, Mitigation, and Public Outreach
- Flood Hazard Assessments, Mapping, and Technical Studies
- Resource Management, Annual Maintenance, and Facility Monitoring



Sammamish Transition Zone

Key Changes for 2014:

- Reduced cost for Sammamish Transition Zone Maintenance
- Reduced cost for fuel at Black River Pump Station
- Reduced training costs

Overall:

- \$9.59M Draft Total Budget
- \$476K or 4.7% less than 2013



Black River Pump Station Fuel

PRELIMINARY DRAFT

Capital Program Guiding Principles

- Follow through on commitments to high priority public safety projects
- Adjust timing based on readiness, landowner willingness, etc
- Adjust based on key design milestones if necessary
- New Corridor Plan Implementation projects
- Expenditure rate: 45% increasing to 65%
- \$7.5 million fund balance for insurance

Belmondo Revetment, Cedar River

2012 Revetment Enhancement
100 lf rock toe, vegetated geogrid

2013 Revetment Enhancement
270 lf vegetated geogrid, 2 ELJS,
boulder clusters, bank trees

2010 Revetment Repair
150 lf vegetated geogrid, ELJ

Project History & Planned Project

Cedar River Gravel Removal



February 1996

Flood peak 7520 cfs in Renton

■ Dredging channel to maintain capacity

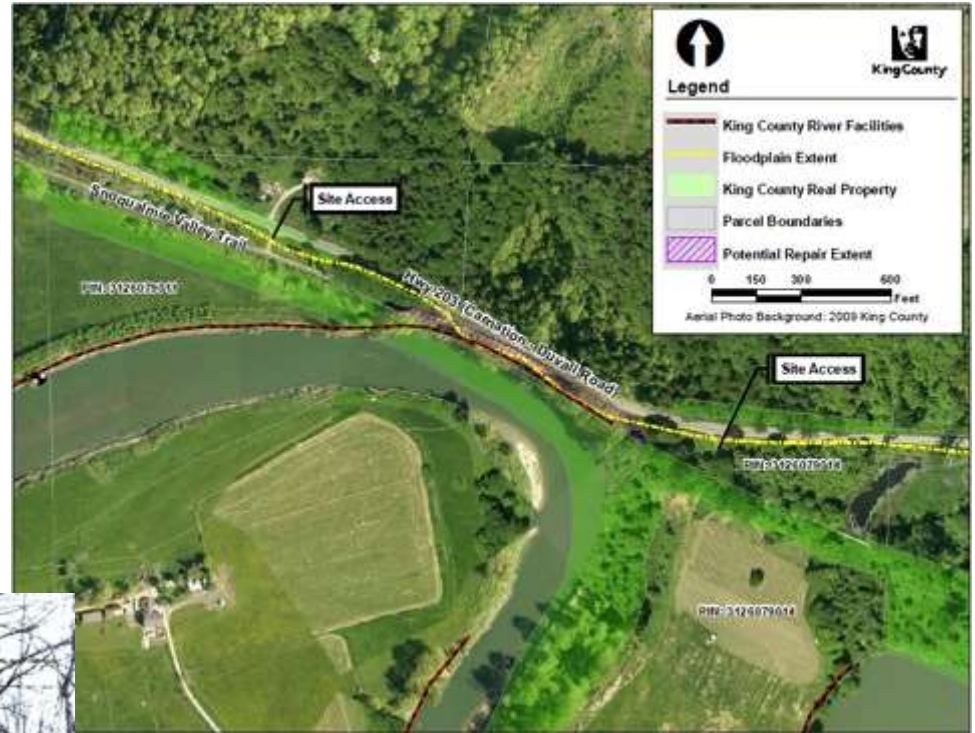


January 2009

Flood peak 9470 cfs in Renton

Sinerra Qualle Upper

- Rapidly eroding bank
- Protects SR 203, Snoqualmie Valley Trail
- 2014 or 2015 construction
- Possible partnership with WSDOT



Project Benefits: Provide erosion protection for SR 203, regional fiber optic trunk line, and Snoqualmie Valley Regional Trail

Winkelman

(Tolt Pipeline Protection)

- Rapidly eroding bank
- Protects SPU Tolt water supply pipeline
- 2015 construction



Project Benefit: Provides erosion protection for the Tolt River water supply pipeline, which carries 30% of potable water supply to north-end communities supplied by Seattle

White River: Countyline and Right Bank

- Proposed KCFCFCD capital projects are levee setbacks to provide increased flood capacity
- Two large-scale projects are proposed to be installed between A-Street and 8th Street bridges
 - Countyline Levee Setback
 - Right Bank (Pacific) Levee Setback

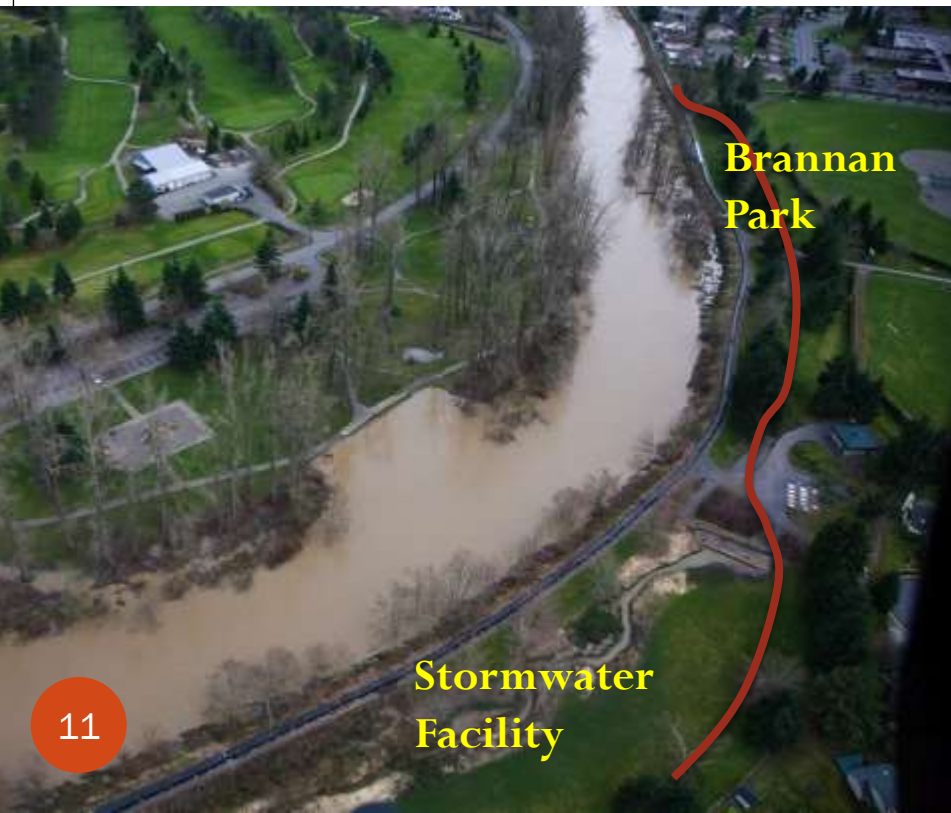


Black River Pump Station Improvements



Reddington Levee Setback

- **Project Benefits:** Protect 596 residential and commercial properties with assessed value of \$680 million, designed for 0.2% annual flood (500-year)
- \$1 million state grant (terms require construction in 2013)



Horseshoe Bend Levee Rehabilitation

- Provide integrated system of stable levees to protect Kent, Renton and regionally significant land uses
- Design and construction depend on outcome of SWIF and USACE Regional Solutions Team
 - Deficiencies include steep slopes, vegetation, encroachments



Horseshoe Bend West – Breda/McCoy Segment

Preliminary Planning Level
Alternative Feasibility Draft
for Discussion Only

Horseshoe Bend Acquisitions and Reconstruction Phase 1

- New levee crest
- Landward access zone
- New road alignment
- Ordinary high water mark
- New topographic contours
- Existing topographic contours



King County
Department of Public Works
Water and Land Management Division

2009 Corps Repairs
shown in **YELLOW**
Area of interest shown
in **RED**

Upper Russell Road Levee

Problem:

- Levee is too steep, structurally inadequate, and subject to chronic, ongoing, and repeated slope undercutting and slumping failures.
- Flood impacts extend north through densely developed and populated commercial and residential areas of Kent and Renton

Proposed Solution:

- Acquire needed right-of-way (no structures) and relocate Russell Road/James St intersection so levee can be set back to a stable geometry
- Possible SWIF “Early Action”?



Discussion

- Do you support the 2014 operating budget and work program?
- Do you support the 2014 capital budget and the 2014-2019 capital program?
- What comments would you like to share with the Board of Supervisors as they consider the 2014 budget and work program?

Flood Preparedness Information

King County Flood Services

www.kingcounty.gov/flood

- King County Flood Alerts
- King County flood gage and phase information
- Sandbag distribution information

King County Flood Control District

www.kingcountyfloodcontrol.org