



# King County Flood Management Plan

Partner Planning Committee

Meeting #1 – October 26, 2022

# Meeting Agenda (11:00 – 1:00)

Topic	Time	Speaker	Affiliation
Welcome and Introductions	11:00-11:15		
Flood Plan Purpose, Process, Scope, and Schedule	11:15-11:40	Steve Bleifuhs and Jason Wilkinson	King County Water and Land Resources Division
Important Issues	11:40-12:20		
Introduction to Goals, Objectives, and Guiding Principles	12:20-12:40		
Public Comment	12:40-12:50		
Wrap Up	12:50-1:00		

## Meeting Objectives:

- To introduce committee members to the flood plan process, scope, and schedule
- To solicit input on which issues are most important to committee members
- To share draft flood plan goals, objectives, and guiding principles

# DRAFT Communication Expectations

- Respect each other's input
- Allow others to complete their statements before contributing yours
- Offer constructive comments in disagreement, but be respectful
- Allow space for others to contribute to the conversation - do not dominate
- State concerns and interests clearly, listen carefully to and assume the best in others, ask questions rather than make assumptions
- Acknowledge that all partners bring legitimate purposes, goals, concerns and interests, even when there isn't agreement
- Acknowledge that different organizations or agencies have different business models, decision-making requirements, and obligations
- Come to meetings prepared, having reviewed the meeting agenda and materials

# Flood Risk in King County



## People and Property

32,000 People in KC Floodplains



## Regional Economy

65,000 Jobs; \$3.7B Total Income



## Critical Public Infrastructure





# King County helps people recover quickly from flooding



## Identifying hazards

Identify, monitor and map flood hazards.



## Flood warning services

Communicate floodplain risks to people and agencies.



## Residential protection

Help people prepare for and protect against flooding.



## Protecting public infrastructure

Build, maintain and inspect levees and revetments.



## Collaborating to reduce new risks

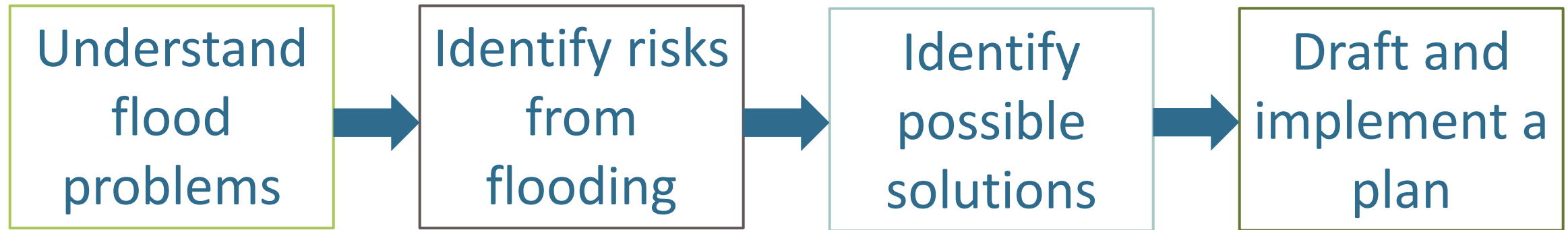
Limit development in hazardous places and restore rivers.

# Role of the Flood Management Plan



- Identifies flood hazards and risks along rivers, creeks, and shorelines.
- Describes strategies, projects, and programs for mitigating risk.
- Defines King County policies that guide activities in areas of frequent flooding.

# How do we build flood resilience?



Community involvement ensures the plan reflects the perspectives of people most impacted by flooding.

# We want YOU to help identify how we can create more resilient communities...

Our goal is to reduce flood risk while also delivering other benefits:

- Advancing equity and social justice
- Providing healthy habitat for salmon and other fish and wildlife
- Supporting recreation and open space
- Enabling viable agriculture
- Promoting economic activity and jobs
- Planning and mitigating for the impacts of climate change
- And more...



# Why are we developing a new flood plan?

- Reflect changed watershed conditions.
- Address potential future impacts from climate change.
- Increase equitable outcomes of flood risk reduction efforts.



*Vashon Island, 2021*



# Integrated Floodplain Management

*Brings together multiple interests to find common agreement on local floodplain visions, strategies, and actions that achieve multiple benefits.*

*- Department of Ecology*



# Flood plan scope

- Assess flood hazards and risks.
- Identify strategies and actions.
- Analyze key topics to inform strategies, actions, and policies.
- Describe impacts to county residents and infrastructure from flooding, including shorelines, tributaries, and urban flooding.



*čak<sup>w</sup>ab – Green River, 2022*



## Partner Planning Committee

- Share information and ideas.
- Provide input on updating goals, objectives, and guiding principles.
- Identify options for addressing priority flood risk reduction issues and deliberate appropriate strategies to address flood risks.
- Inform how climate change, equity, and multiple benefits are included in the plan.
- Committee recommendations (and minority opinions) will be shared with County leadership and will inform draft and final plan.

# Partner Planning Committee Process





# Other Committees

- **Coordinating Committee:**

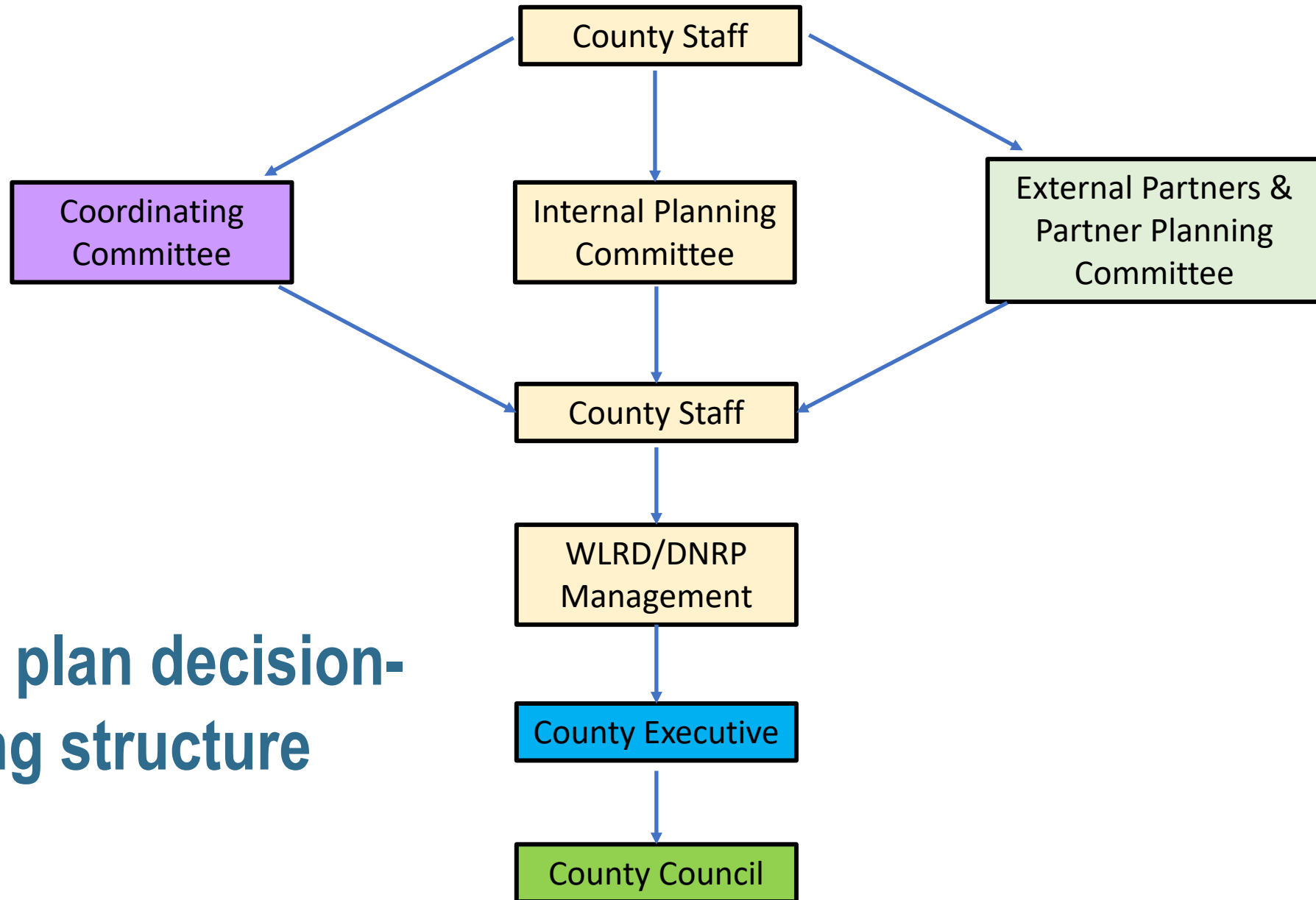
- Includes WLRD management and staff from FCD, Executive Office, and Council.
- Provides guidance on scope, schedule, and approach for updating the Flood Plan, particularly on issues where County and Flood District policies and decision-making roles intersect.
- Will also help to anticipate and plan for Executive, Council, and Flood Control District Board review and consideration of the Flood Plan.

- **Internal Planning Committee:**

- Comprised of King County staff from multiple departments
- Informs planning process and identify critical policy choices
- Identifies opportunities to advance multi-benefit goals, flag potential barriers or challenges
- Supports plan development

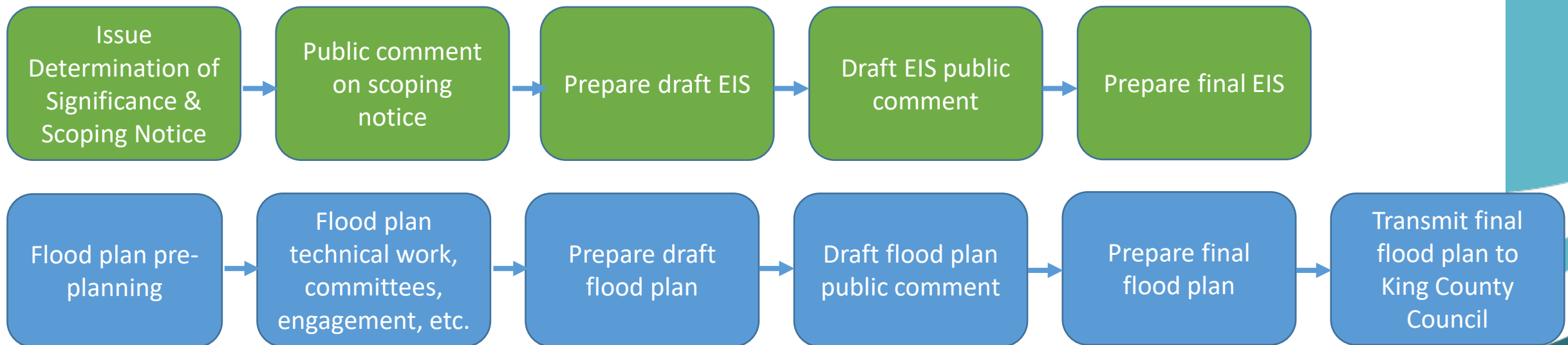


## Flood plan decision-making structure

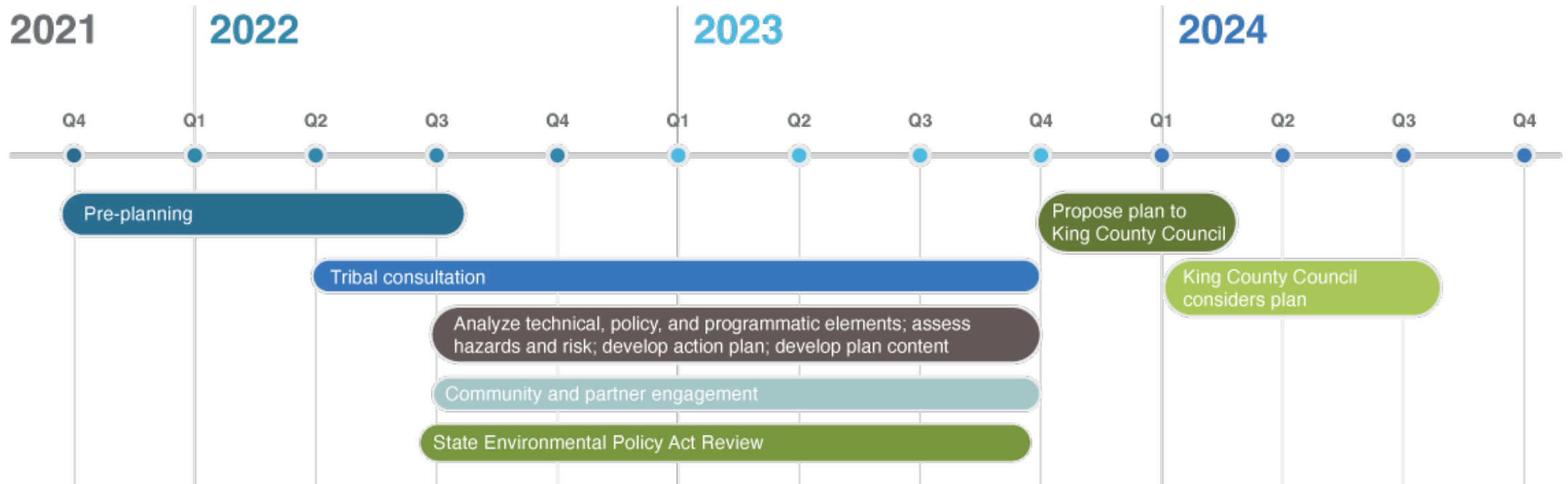


# State Environmental Policy Act (SEPA)

- Ensures environmental factors are considered in decision-making
- Covers both the natural and built environment
- Environmental Impact Statement (EIS) - identifies and analyzes potential environmental impacts



# Flood plan schedule



# Other opportunities for engagement and consultation

- Tribal consultation (gov't to gov't).
- Engagement with existing groups (WRIAs, Fish/Farm/Flood, etc.).
- Workshops focused on tributaries, coastal, and urban flooding (Winter '23).
- County-sponsored meetings, surveys.
- Community events, community partnerships.





**Jason Wilkinson**

*Project Manager*

King County Water and Land Resources Division

[jason.wilkinson@kingcounty.gov](mailto:jason.wilkinson@kingcounty.gov)

206-477-4786

**Steve Bleifuhs**

*Section Manager*

King County River and Floodplain Management  
Water and Land Resources Division

[steve.bleifuhs@kingcounty.gov](mailto:steve.bleifuhs@kingcounty.gov)

206-477-4726



***Learn more!***

***Visit [kingcounty.gov/FloodPlan](http://kingcounty.gov/FloodPlan)***

# Committee Member Interviews – Initial Reflections

- Emphasis on equity, climate change, agriculture
- Desire for a multi-benefit plan, but emphasis on balance
- Desire to be able to provide substantive input that affects the final plan
- Desire for more committee time spent on discussion, not presentations
- Interest in addressing numerous specific issues – these thoughts will be shared with the County
- Some topics where opinions may conflict

# Breakout Rooms: Important Issues

- We will divide you into three breakout rooms, each with a member of the King County/ESA team to facilitate and take notes
- You will have ~25 minutes to discuss:
  - Which are the most important issues for you in the flood plan update?
  - What flood issues have you observed/are you concerned about?
- Be specific and ask each other follow-up questions
- Feel free to take a 5-minute break if your group needs one



## Report Out: Important Issues

- What did you hear that surprised you, or that spoke to something you hadn't thought about before?

# Goals, Objectives, and Guiding Principles

- Goals, objectives, and guiding principles were included in 2006 flood plan, and a lot has changed since then:
  - Better understanding of climate change impacts
  - Multi-benefit project implementation and leveraging external investment
  - New state guidance on flood planning
- This Flood Plan provides another opportunity to solicit broad input on the goals, objectives, and guiding principles.
- A King County cross-departmental team is working on *initial working draft* goals, objectives, and guiding principles. The working drafts are being discussed internally, and feedback from this Committee is important and will help shape them.





# Goals, Objectives, and Guiding Principles

- Today:
  - Introduction to goals, objectives, and guiding principles
  - Review of initial draft goals
  - Questions
  - Initial input and discussion as time allows
- Before next meeting:
  - Latest working draft will be shared with the Committee well in advance of the meeting to review
- Next meeting:
  - Committee work session to discuss and provide input



# Definitions

- **Goals** describe the long-term outcomes the Flood Plan is trying to reach
- **Objectives** are more specific statements describing how we will achieve those outcomes
- **Guiding Principles** are the facts and technical understanding that direct flood hazard management in King County



# Initial Working Draft Goals

1. To reduce risks from all sources of flooding and channel migration through comprehensive, equitable, climate-resilient solutions
2. To enhance the natural functions of flood hazard areas, honor Tribal treaty rights, and support interests important to King County communities through actions that achieve multiple benefits
3. To promote flood risk reduction solutions focused on long-term cost effectiveness





# Public Comment

Opportunity to provide public comment (up to 2 minutes)

# Wrap-Up

- Next meeting: work session on goals, objectives, and guiding principles
- Contact us:
  - Jason Wilkinson, [jason.wilkinson@kingcounty.gov](mailto:jason.wilkinson@kingcounty.gov)
  - Spencer Easton, [seaston@esassoc.com](mailto:seaston@esassoc.com)