

Figure A-1
PRELIMINARY SANITARY BASINS AND PIPES
BARTON BASIN
BARTON, MURRAY, NORTH BEACH, SOUTH MAGNOLIA CSO FACILITIES
KING COUNTY DNR, WASTEWATER TREATMENT DIVISION

Basins	SPU Manhole ID	Flow Meter ID	Field Comments	Cleaning Required	Maintenance Authority
Barton CSO Basin	075-024	B_2	OK to Monitor here		ADS Env. Services
Barton CSO Basin	075-025	B_3	OK to Monitor here		ADS Env. Services
Barton CSO Basin	075-167	B_4a	Monitor A Here		ADS Env. Services
Barton CSO Basin	075-480	B_4b	Monitor B Here		ADS Env. Services
Barton CSO Basin	075-020	B_5	OK to Monitor here		ADS Env. Services
Barton CSO Basin	075-175	B_6	Currently Monitoring		King County - WTD
Barton CSO Basin	075-430	B_8	OK to Monitor here		ADS Env. Services
Barton CSO Basin	075-237	B_10	OK to Monitor here	Yes	ADS Env. Services
Murray CSO Basin	068-148	M_1	OK to Monitor here		ADS Env. Services
Murray CSO Basin	068-151	M_2	OK to Monitor here		ADS Env. Services
Murray CSO Basin	068-259	M_3	OK to Monitor here		ADS Env. Services
Murray CSO Basin	068-145	M_4	OK to Monitor here		ADS Env. Services
Murray CSO Basin	068-301	M_7	OK to Monitor here	Yes	ADS Env. Services
Murray CSO Basin	068-261	M_9	OK to Monitor here		ADS Env. Services
North Beach CSO Basin	230-078	NB_1	OK to Monitor here	Yes	ADS Env. Services
North Beach CSO Basin	230-068	NB_2	Currently monitoring		King County - WTD
North Beach CSO Basin	230-067	NB_3	Currently Monitoring		King County - WTD
North Beach CSO Basin	230-499	NB_4	OK to Monitor here		ADS Env. Services
North Beach CSO Basin	230-426	NB_5	OK to Monitor here		ADS Env. Services
South Magnolia CSO Basin	026-006	SM_2	Currently Monitoring		King County - WTD
South Magnolia CSO Basin	026-009	SM_3	Currently Monitoring		King County - WTD
South Magnolia CSO Basin	026-292	SM_5	OK to Monitor here	Yes	ADS Env. Services
South Magnolia CSO Basin	026-107	SM_6	OK to Monitor here		ADS Env. Services
South Magnolia CSO Basin	026-290	SM_7	OK to Monitor here		ADS Env. Services
South Magnolia CSO Basin	027-010	SM_8	Monitor Here		ADS Env. Services
South Magnolia CSO Basin	027-215	SM_9	OK to Monitor here		ADS Env. Services

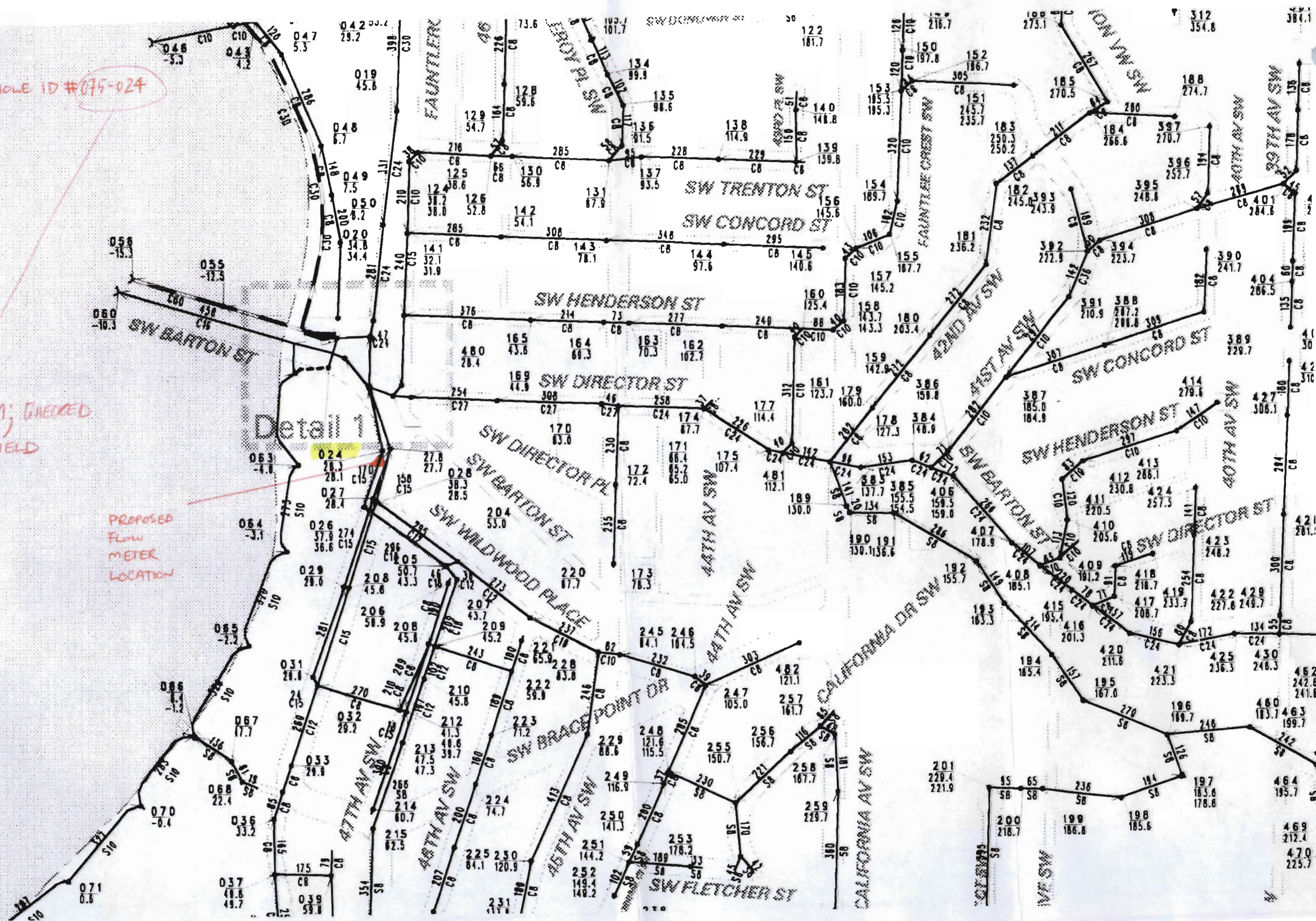
B-2

AT MANHOLE ID #075-024

OKAM; CHECKED
IN FIELD

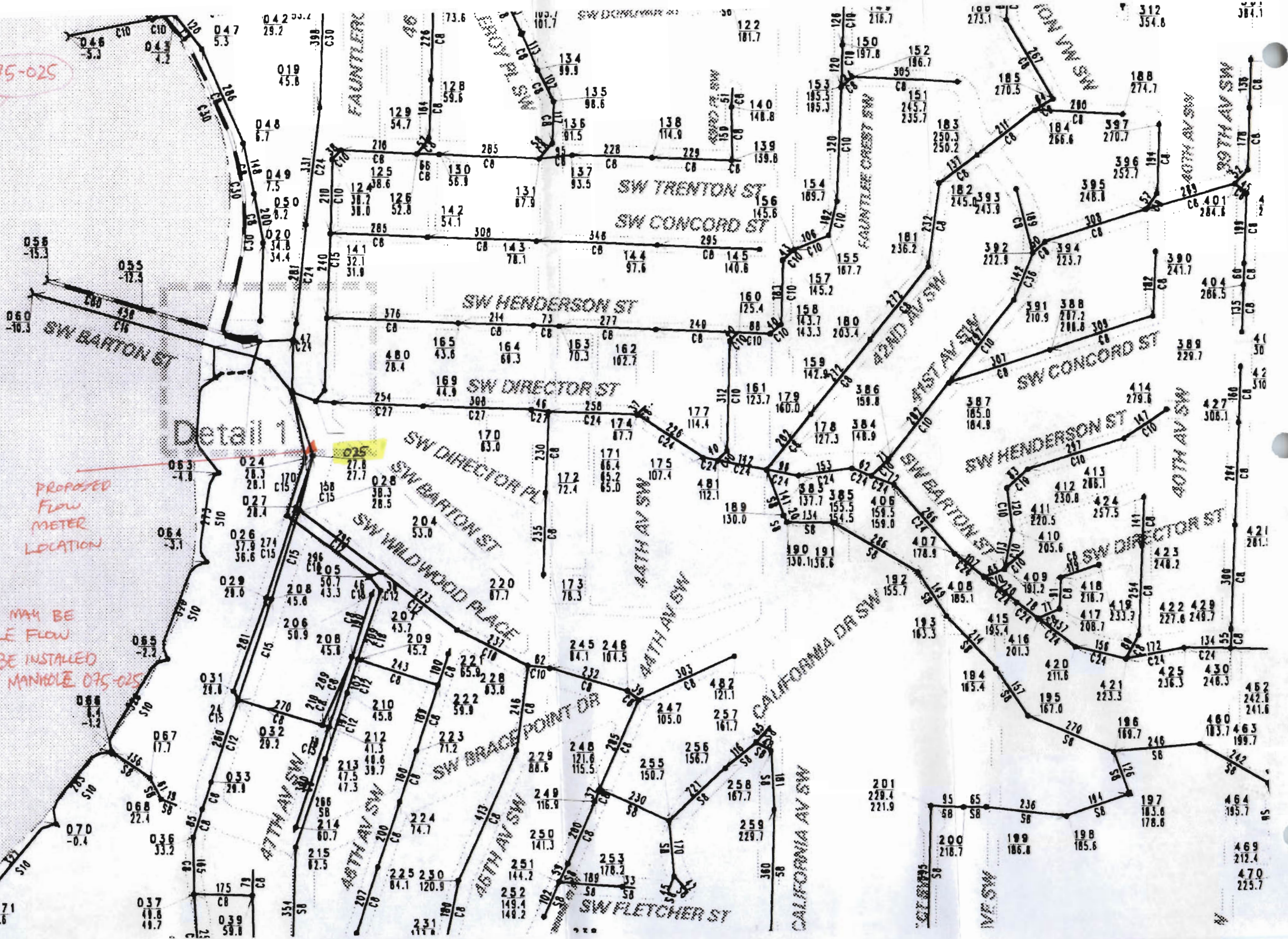
PROPOSED
FLOW
METER
LOCATION

Detail 1



B-3
AT MANHOLE ID# 075-025

OKAY, CHECKED
1st FIELD



PROPOSED
FLOW
METER
LOCATION

NOTE: 2 METERS MAY BE
REQ'D IF SINGLE FLOW
METER CANNOT BE INSTALLED
AT D/S END OF MANHOLE 075-025

B-4

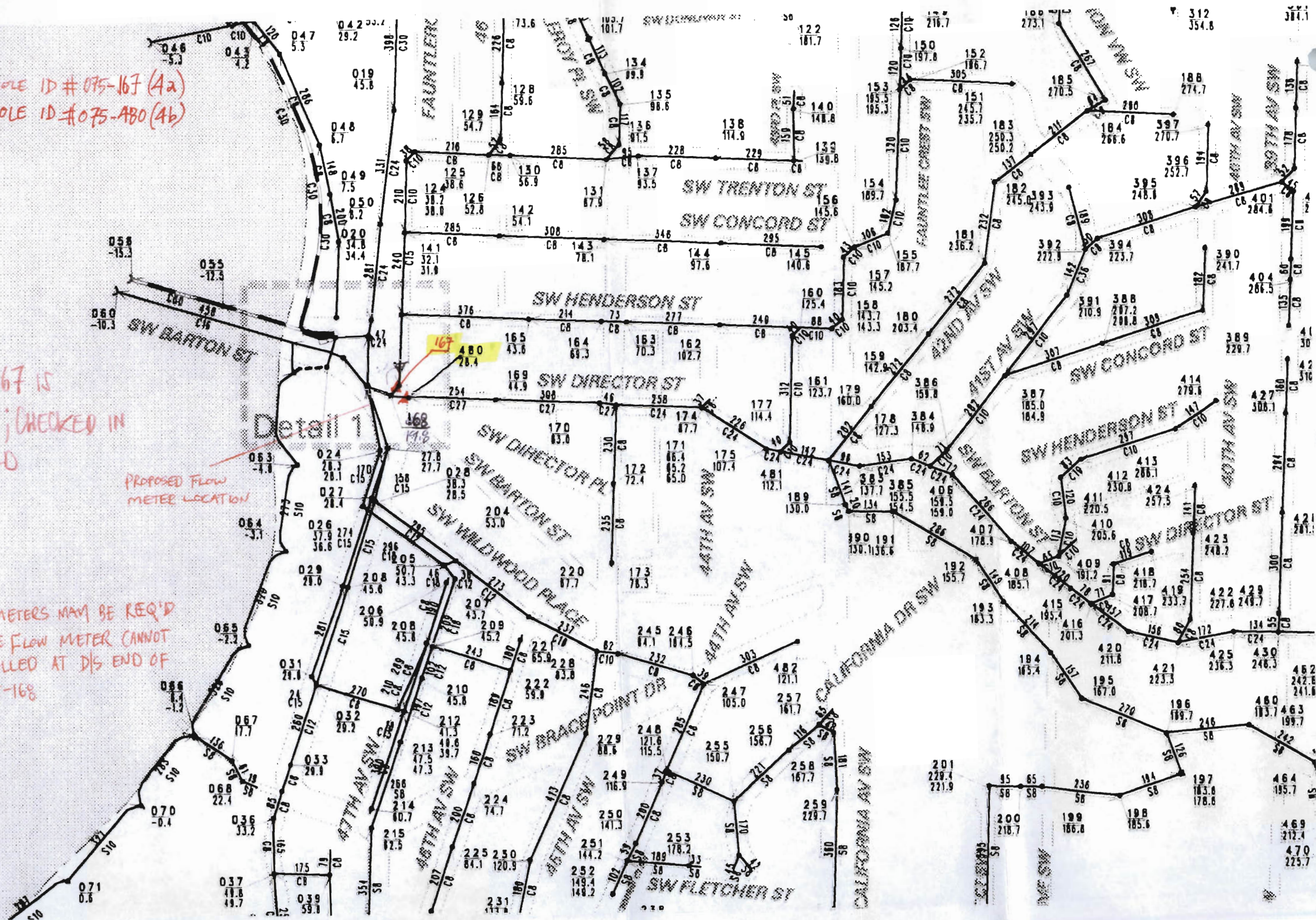
AT MANHOLE ID #075-167 (4a)

AT MANHOLE ID #075-180 (4b)

MH 167 IS

O.K.A.I.; CHECKED IN
FIELD

NOTE: 2 METERS MAY BE REQ'D
IF SINGLE FLOW METER CANNOT
BE INSTALLED AT DIS END OF
MH 075-168

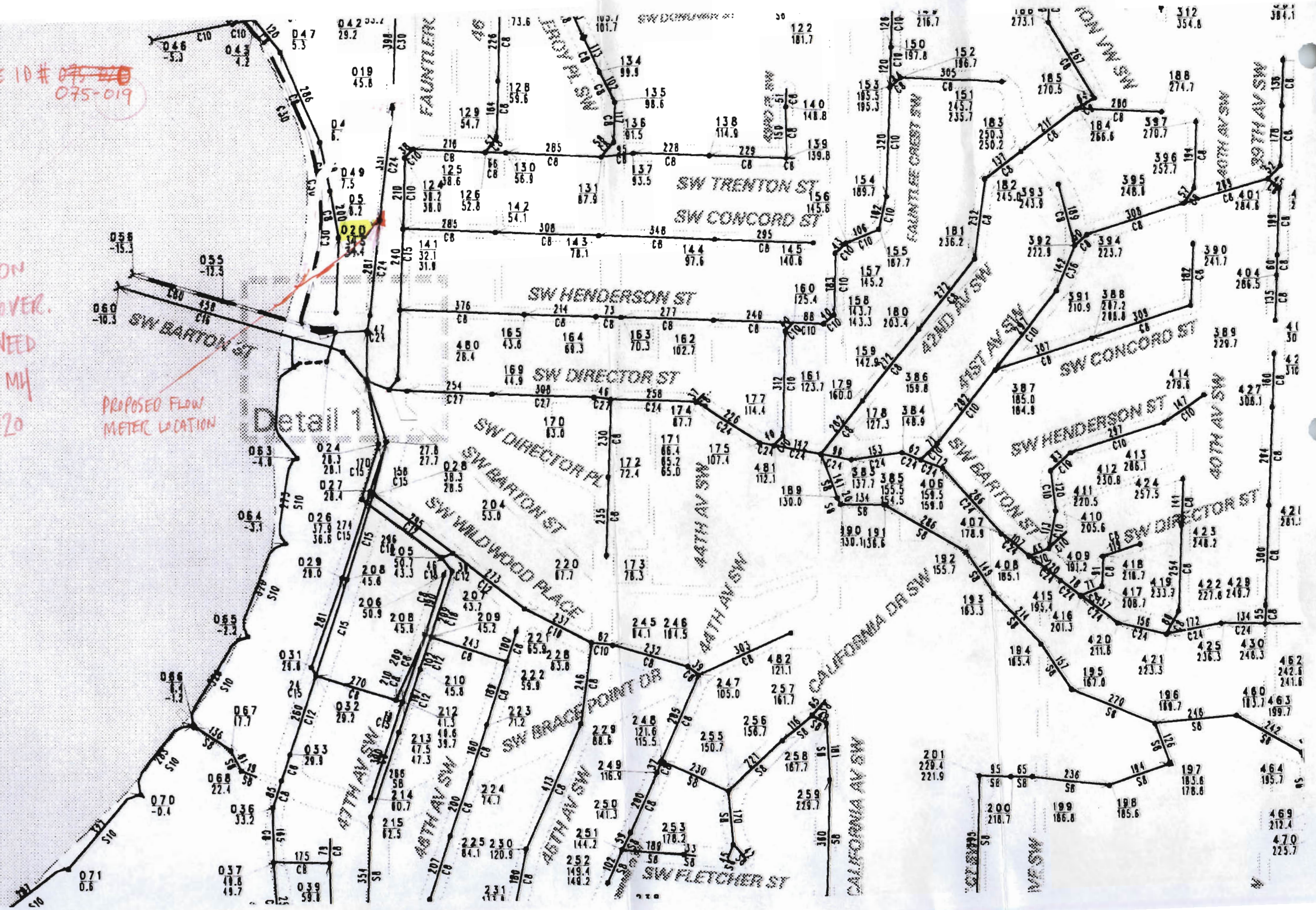


B-5
AT MANHOLE ID # ~~075-018~~
075-019

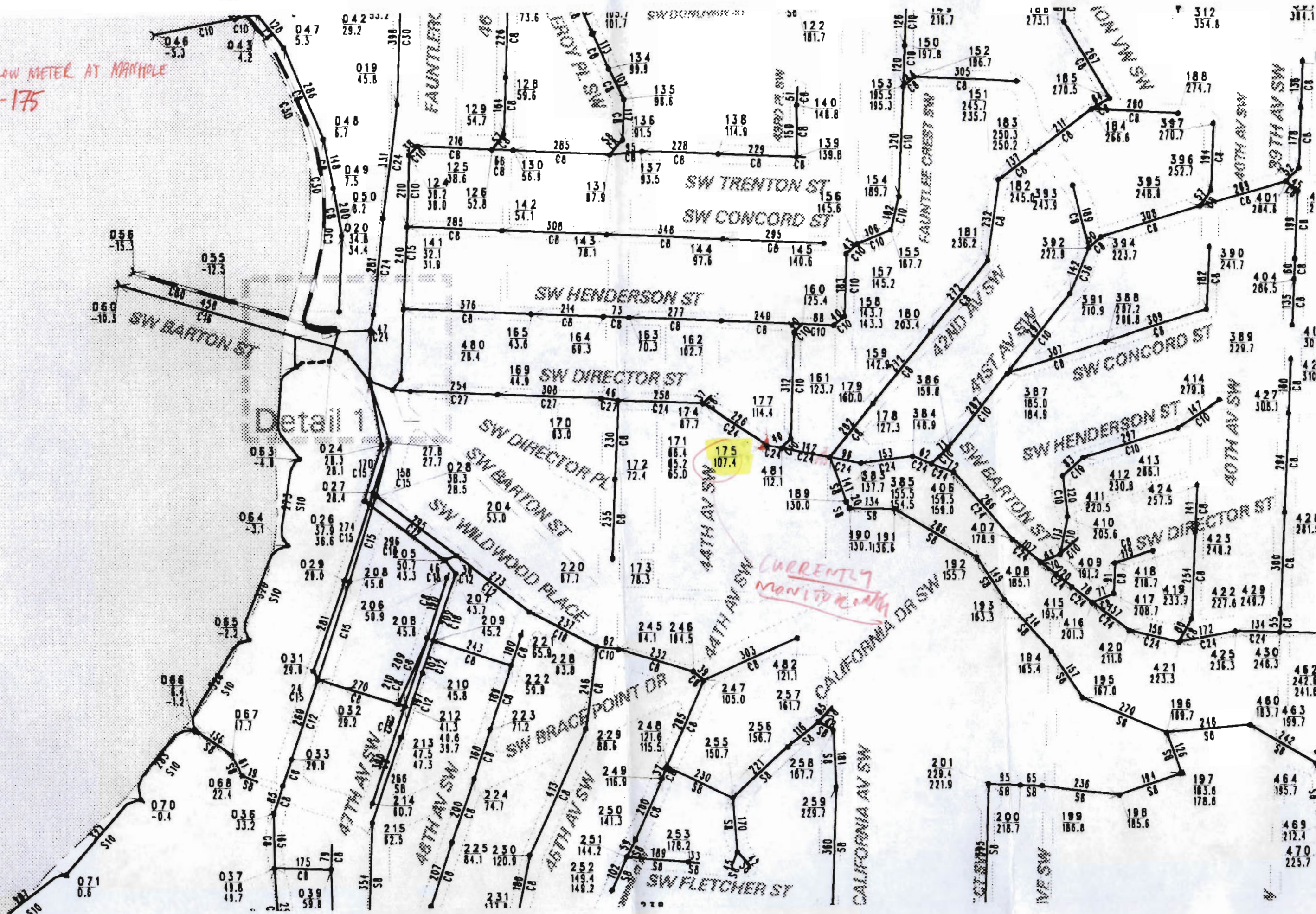
TREE ON
MH COVER.
MAY NEED
TO USE MH
175-020

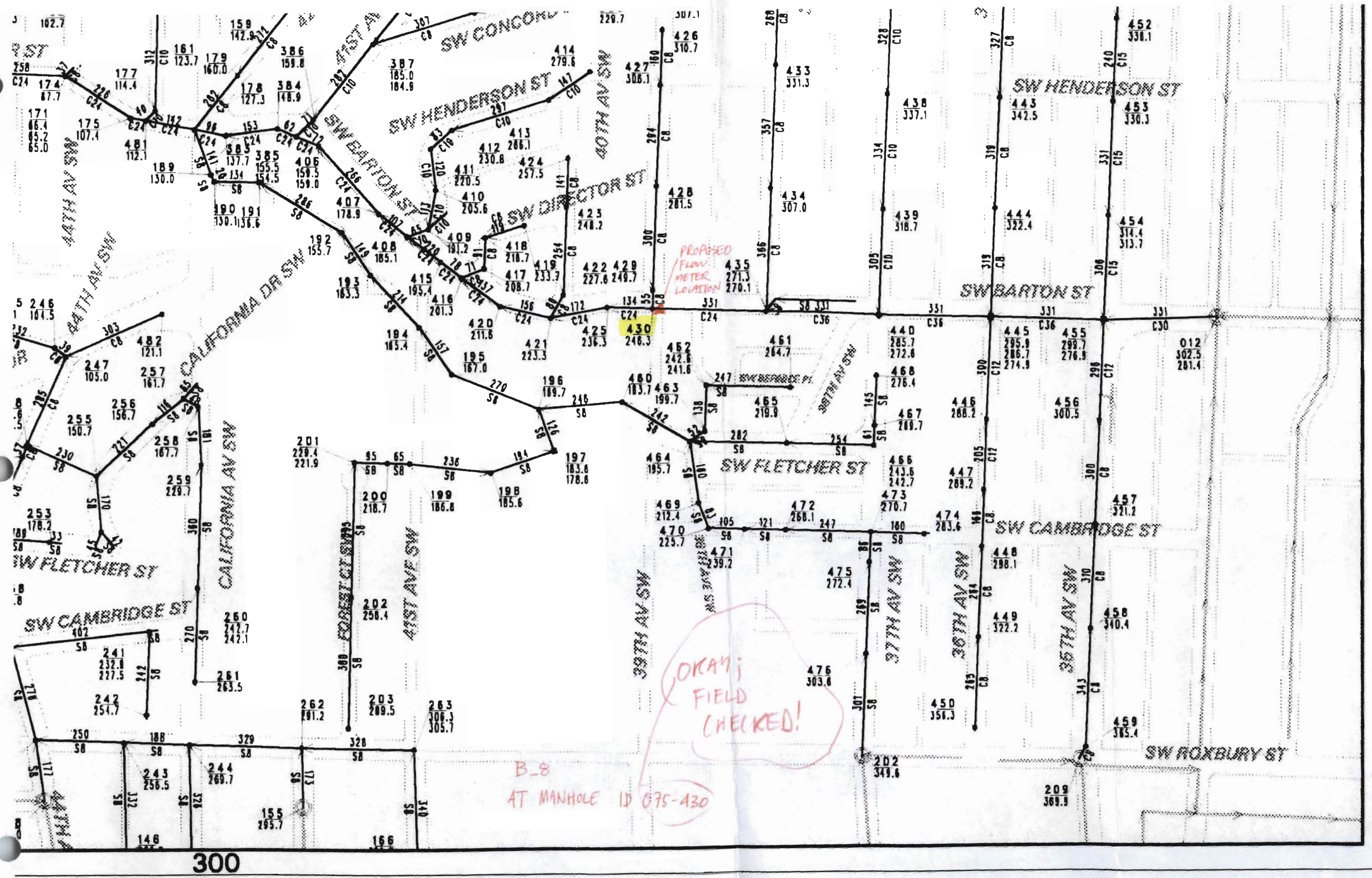
PROPOSED FLOW
METER LOCATION

Detail 1



EXISTING FLOW METER AT MANHOLE
ID # 075-175





OKAY;
FIELD
CHECKED!

B-8
AT MANHOLE ID 075-430

B-10
AT MANHOLE ID #075-237

075-237
OKAY; 075-238
HAD POOR HYDRAULICS
CLEANING
REQ'D

