



King County

Barton, Murray, Magnolia, and North Beach



**Public Meeting
On Community Generated Alternative
November 1, 2010**

CSO Facilities



Engineers...Working Wonders With Water™



TETRA TECH

And Associated Firms

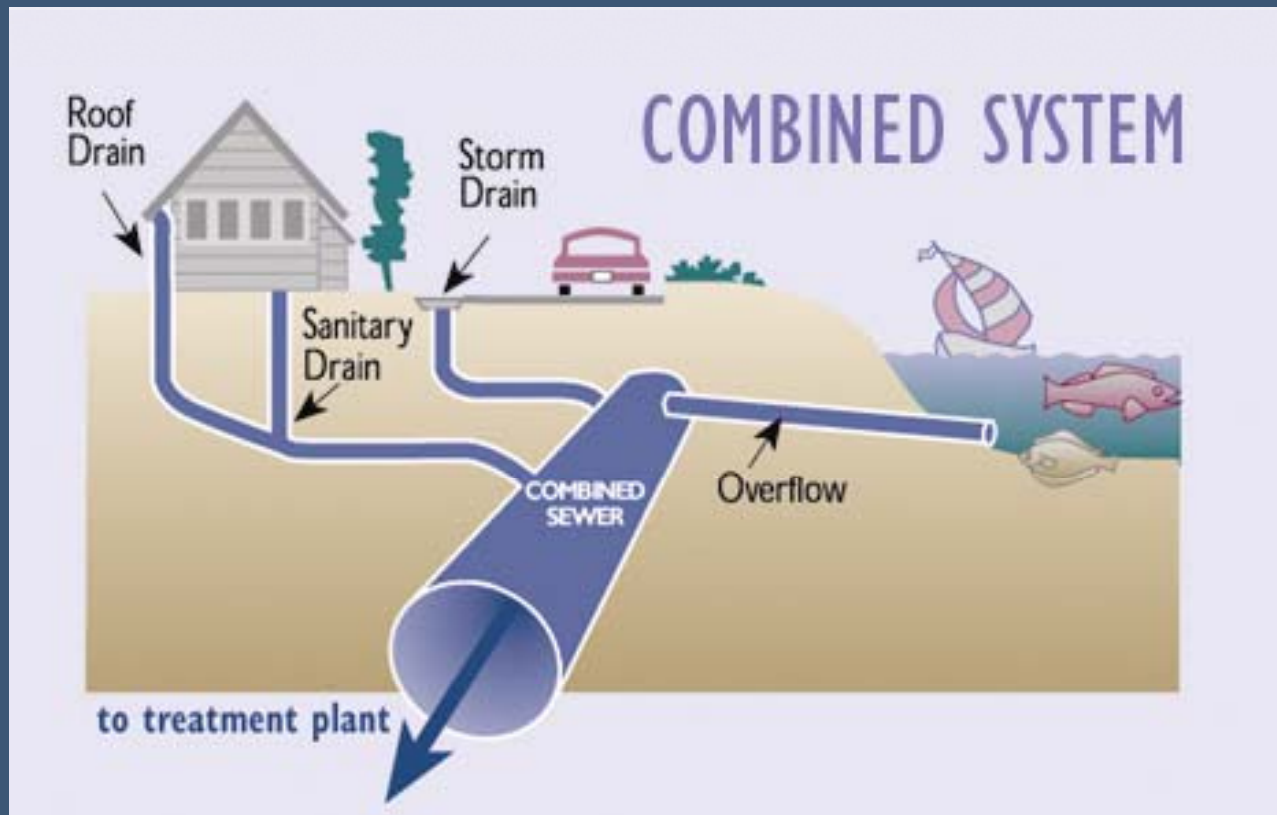
Meeting Purpose

- To raise awareness that Lincoln Park's south parking lot has been recommended as a potential location for a CSO facility
- To provide information on this CAG recommendation
- To let the community know how to give input that will help inform the county's decision

Meeting Agenda

- CSO Beach Project overview
- CAG recommendation
- Next steps
- Question and Comment

The Combined Sewer System



Evaluation Factors



County proposed alternatives

Barton

- Former Fauntleroy School Site
- Upper Fauntleroy Way SW
- GSI in Upper basin

* Storage volume: 220K

Murray

- Lowman Beach Park
- ~~Beach Dr S.W. and Murray Ave S.W.~~
- Private Property in Beach Dr Area

* Storage volume: 1MG

Community involvement during 2010

- March 18 and 29, 2010 Public meetings to discuss County's proposed Barton and Murray alternatives
- April 21, 2010 public meeting with Morgan Community Association (MOCA)
- Support in Barton basin, strong objections in Murray.
- June 9 Murray CAG formed

Murray Basin CSO Background

- King County held public meeting in March and April 2010 to provide information on three proposed alternatives
- Citizens advised King County of serious concerns with Murray Basin proposed alternatives and timeline for selection of preferred alternative
- Citizens requested more community engagement, including citizen advisory group

Murray Basin CSO Community Advisory Group

- King County agreed to convene advisory group
 - Facilitator engaged
 - Stakeholder interviews
 - Membership proposed
- CAG convened in June
 - Developed guidelines and goals
 - Participated in June 19 technical session

CAG Members

Members

- Bill Beyers
- John Comick
- Kate Dee
- Patrick Gordon
- Chris Jansen
- Scott Gunderson
- Chas Redmond (Morgan Community Association)
- Donna Sandstrom
- Don Stark
- Ron Sterling

Ex Officio Members

- Vlad Oustimovitch
(Fauntleroy Community Association)
- Cheryl Eastberg, Seattle Parks
- Tracy Tackett, Seattle Public Utilities
- Linda J Sullivan, King County WTD

Examining the Problem

- Nine CAG meetings and two technical sessions
- Narrowed to five alternatives from CAG
 - Lincoln Park storage by Colman Pool
 - Storage at Beach Drive/Murray Avenue “triangle” by Pelly Creek
 - Distributed storage tanks in five locations in upper Murray basin
 - Combined pipe and tank storage on private property at Beach Drive and under Beach Drive
 - Storage tank under Lincoln Park southern parking lot

CAG Recommendation

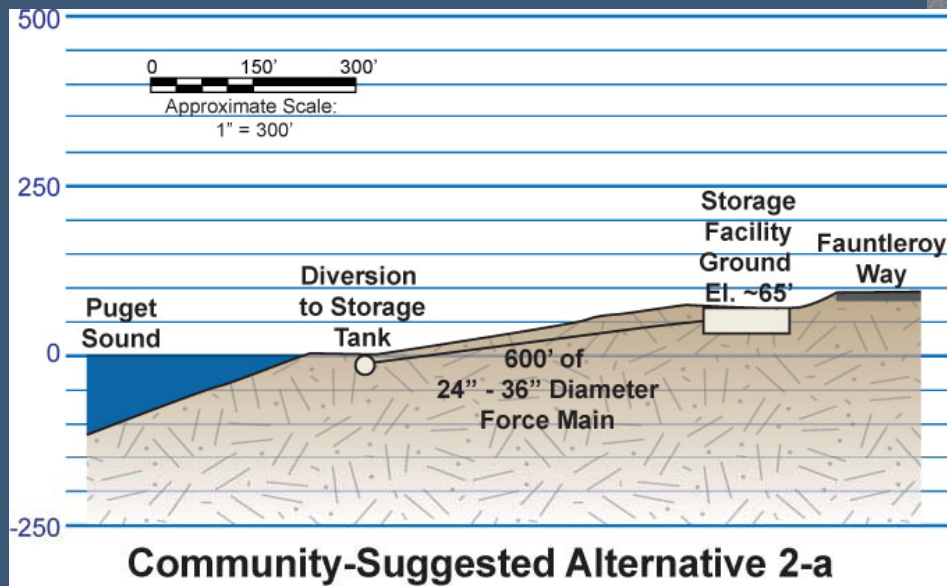
Recommended alternative: Combined storage under Lincoln Park south parking lot and smaller storage near Lowman Beach Park

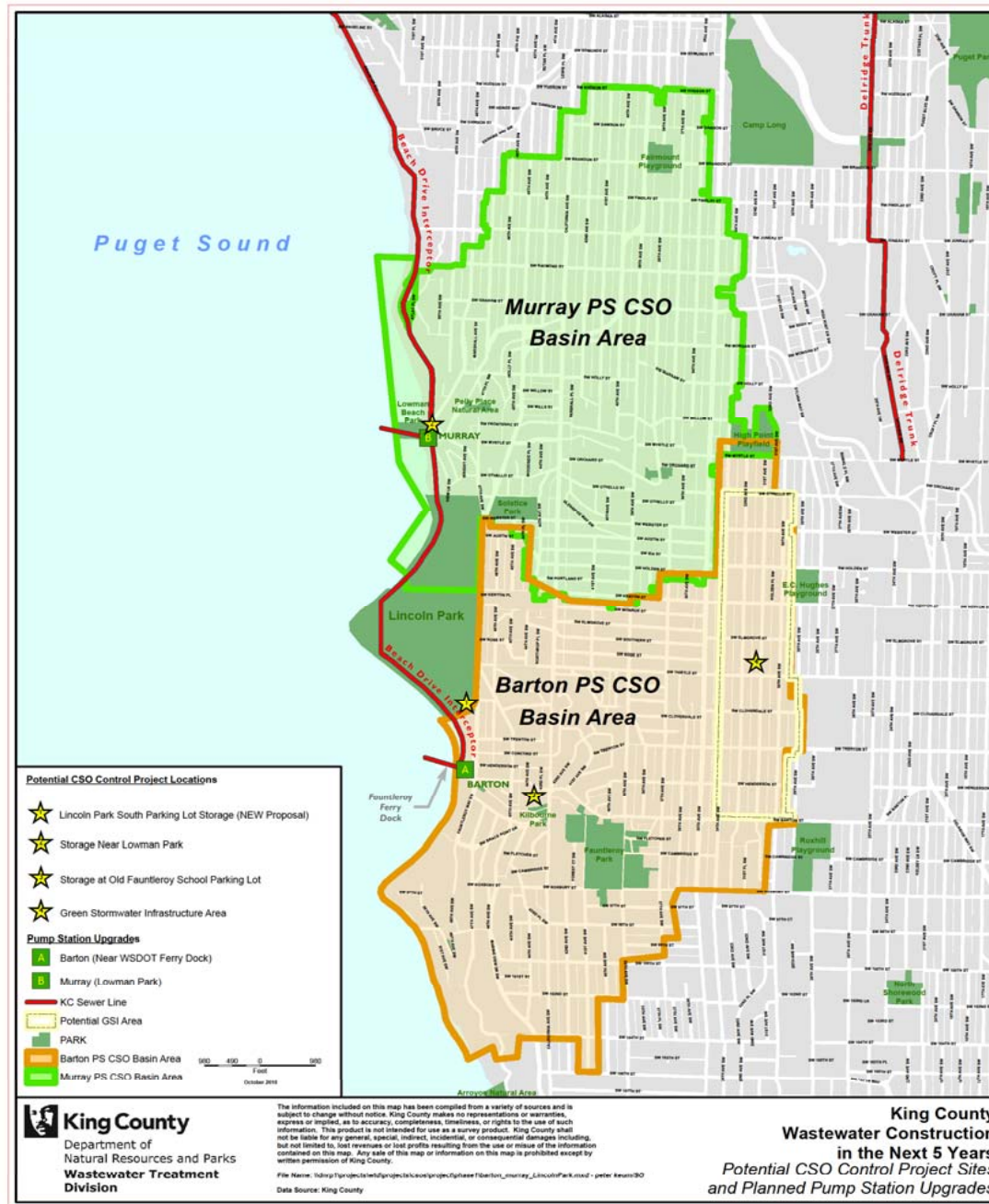
- Include green infrastructure pilot in Murray and Barton Basins where feasible
- County include CAG guiding principles in screening criteria
- Continue robust community involvement

Meeting Purpose

- King County wants to hear from you regarding the proposed alternative in Lincoln Park

CAG #2a Storage in Lincoln Park – Lower Parking Lot



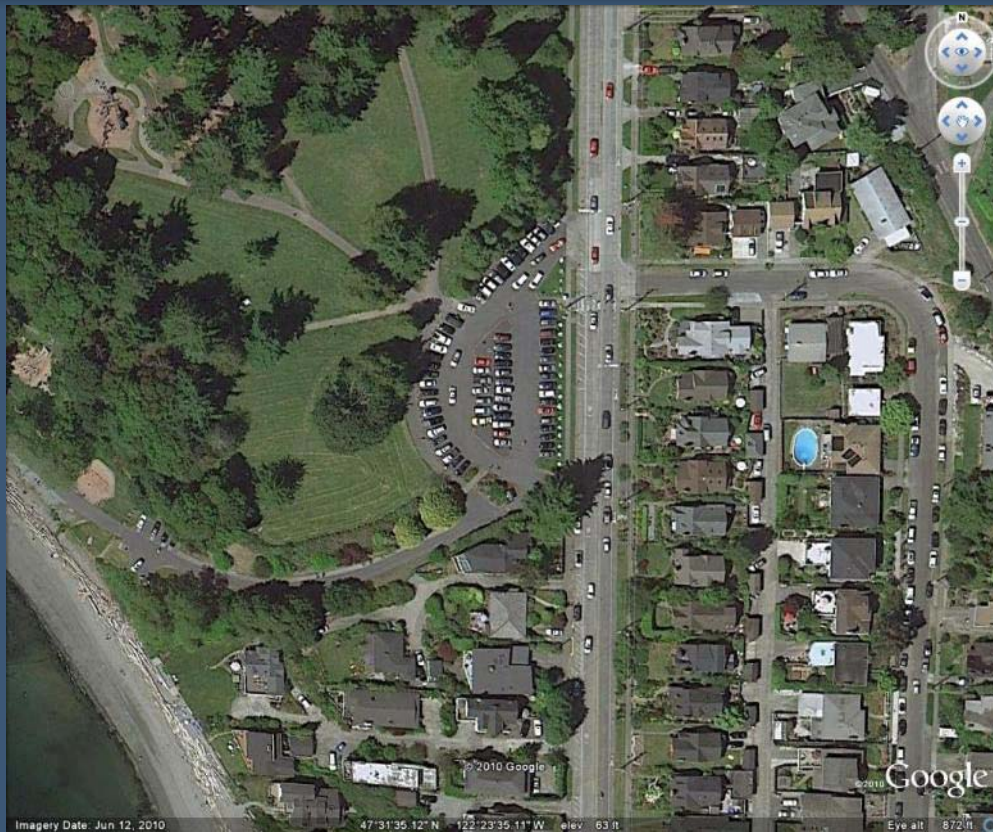


The Process Ahead

- County to select alternative - Dec 2010
- SEPA comment period - Spring 2011
- Complete final design - 2012
- Begin construction - 2013

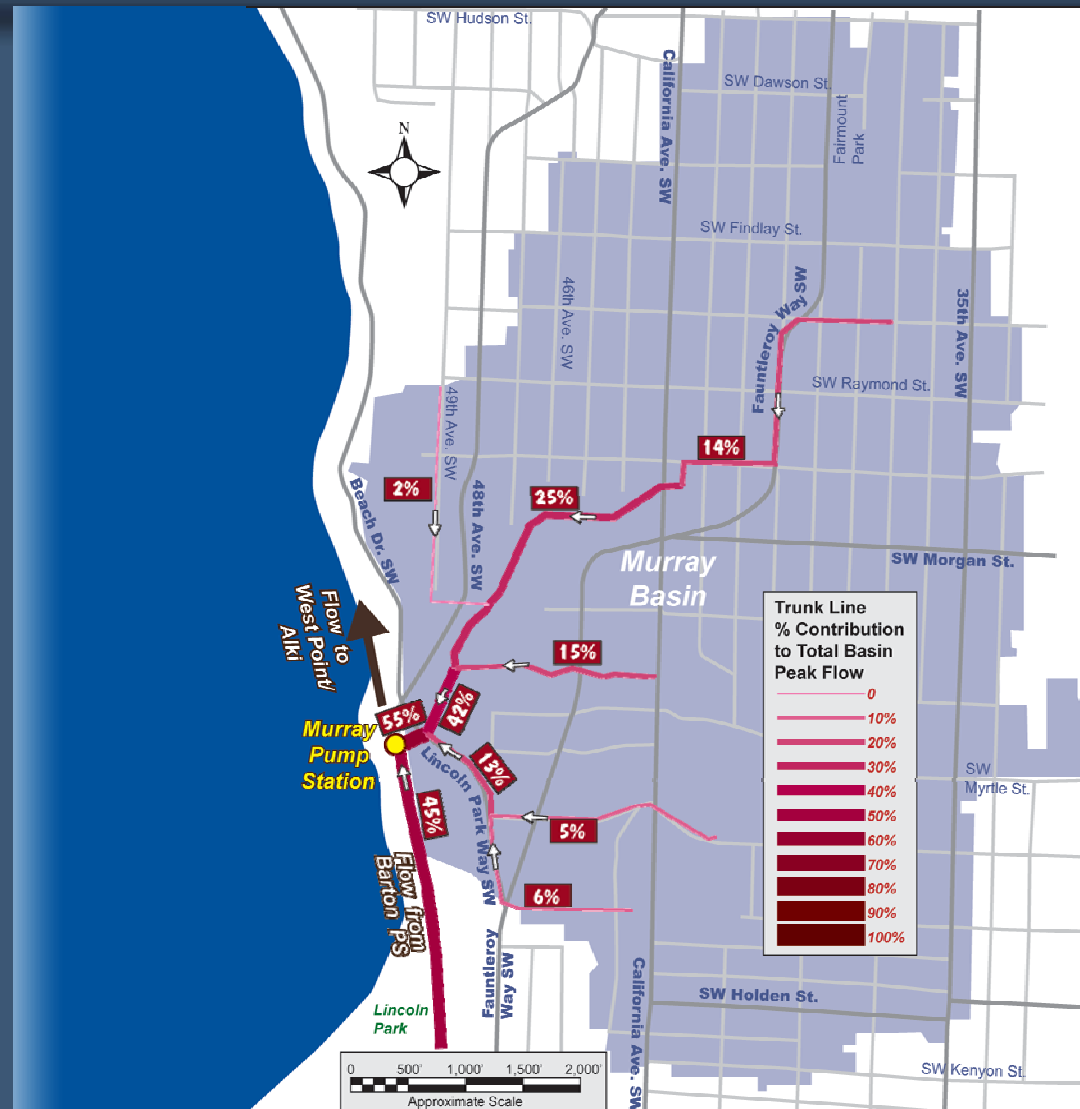
As we move forward, the County will work closely with affected communities

Questions and Comments



Aerial view of Lincoln Park South Parking Lot

Murray Basin Flow Distribution



Flow Distribution in Barton Basin

- Flow converges at Barton Pump Station
- SW Barton Street/SW Director Street trunk carries roughly 50% of basin flow

