



King County

North Beach CSO Control Project



**Community Meeting
January 25, 2012**


HDR and Team

Agenda

- Project update
 - Field investigations and summary of first phase
 - Pipeline alignment
 - Facility building structure and placement (odor control/electrical)
- Planning for construction
- Upcoming opportunities for public participation
- Next steps

-

Project status

- 
- Submitted final facility plan to Department of Ecology
 - Completed environmental review process
 - Spring 2011 – 2012: design and permitting phase
 - December 31, 2012: Ecology review of final design
 - Mid 2013 – Mid 2015: construction



Addressing community concerns

- Community concerns are collected throughout planning and design
- Comments gathered during the State Environmental Policy Act (SEPA) process
- Neighborhood conversations
- Community meetings and briefings





Early design activities

- Conduct field investigations
- Consider community input
- Refine pipeline alignment and building location and configuration

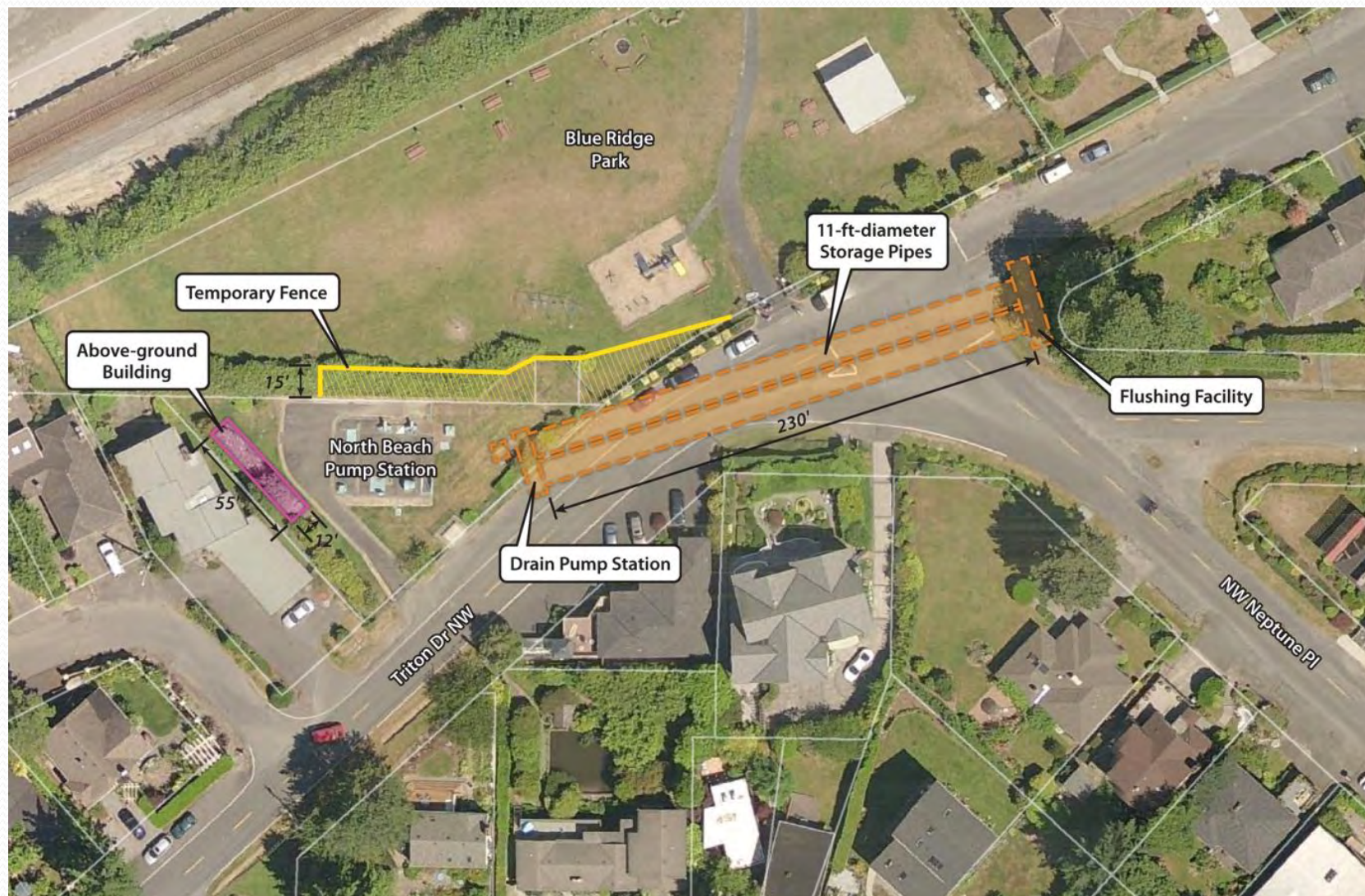


Field investigations

- Geotechnical borings
- Right-of-way and County site survey
- Utility locations
- Existing pump station investigations



Pipeline configuration



How did we refine pipeline storage?

King County will design and install parallel 11-foot diameter pipes, 230 feet long

- Reduces the construction footprint
- Maintains access to park and driveways
- Provides access to facility that is out of the roadway, improving crew safety and reducing traffic impacts
- Allows for a simple, lower-maintenance flushing system that uses less water
- Reduces interference with underground utilities



King County

Pipeline construction area





King County

Pipeline construction area





King County

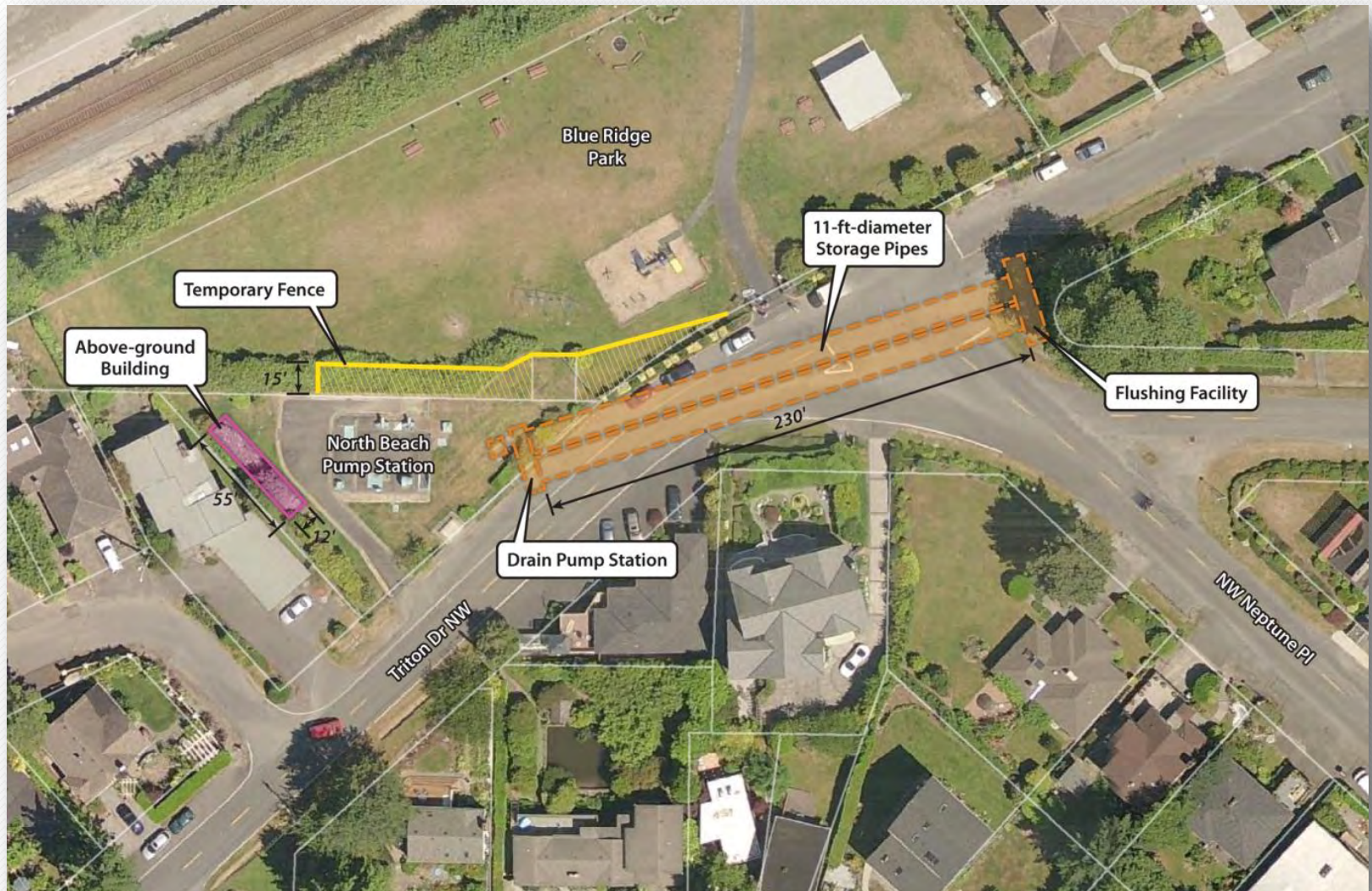
Pipeline construction area





King County

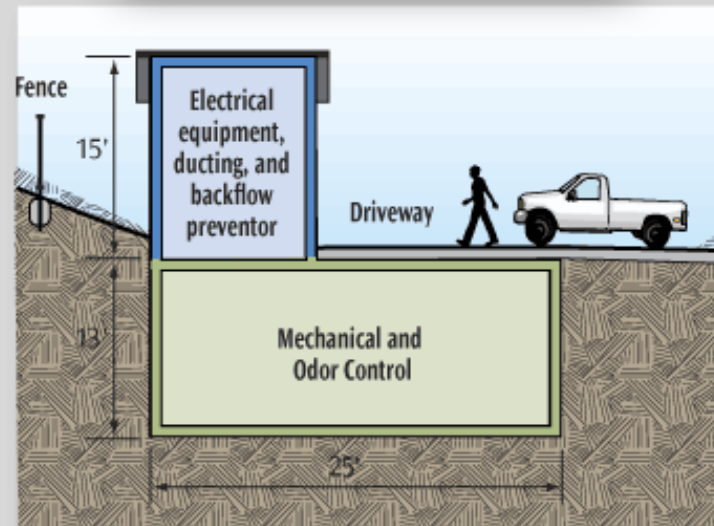
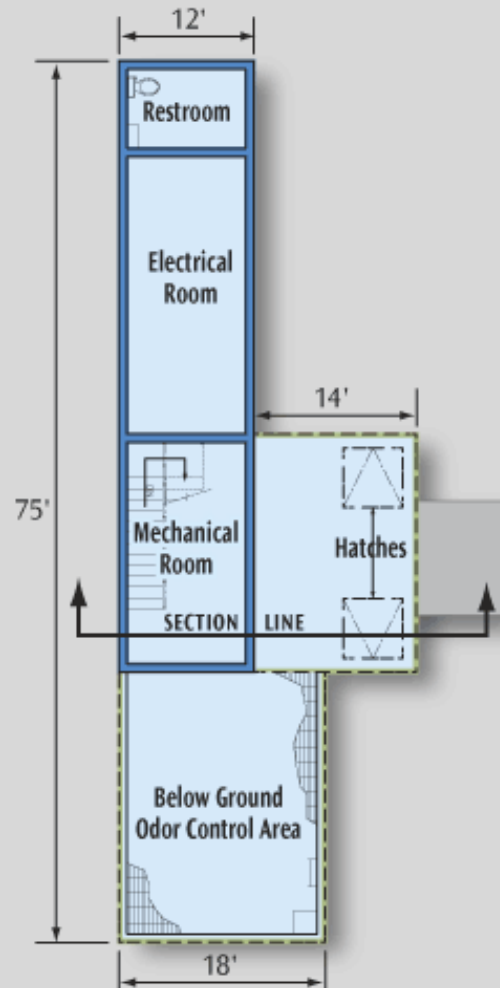
Current building configuration





King County

Above- and below-ground building





King County

Fan removal





King County

Building location





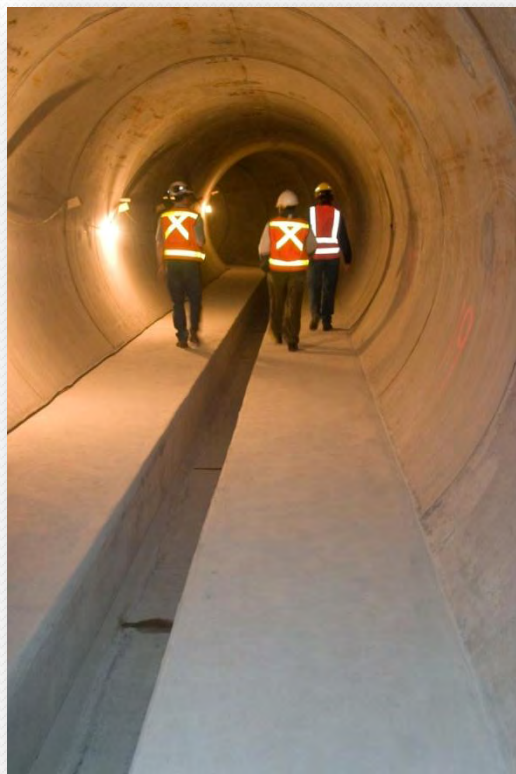
Site access



Building Design Update

- Above-ground facility size reduced by approximately 20%
- Odor control and mechanical equipment installed below-ground
- Existing emergency generator used for storage facility
- Two existing surface fans moved to new building
- Diverted peak flows from the pump station wet well
- New odor control facility provided for both the CSO storage facility and pump station

What will the area look like after construction?



*Completed underground storage pipeline,
Boeing Creek Park*



Access hatch



Access hatch



Construction duration

- Expected to begin in mid-2013
- 18- to 24- month duration





King County

Construction in the Right-of-Way



Traffic control plan



Bus routes and detours

- We work with Metro for transit detours
- We work with the school district for school bus route changes



Keeping the community up to date

- Web updates
- Door hangers
- Newsletters
- Press releases
- Emails and mailings
- Community group briefings

July 2012 - Event on site at the project area- site restoration and construction preview



Problem solving during construction

- Address access issues for residents, services and deliveries
- Work with construction management team to address reported problems
 - Respond to questions, concerns, and complaints



King County

Department of
Natural Resources and Parks
Wastewater Treatment Division

**North Beach Storage Pipeline
Project**

24/7 Construction Hotline

206-XXX-XXXX

In an emergency, dial 911

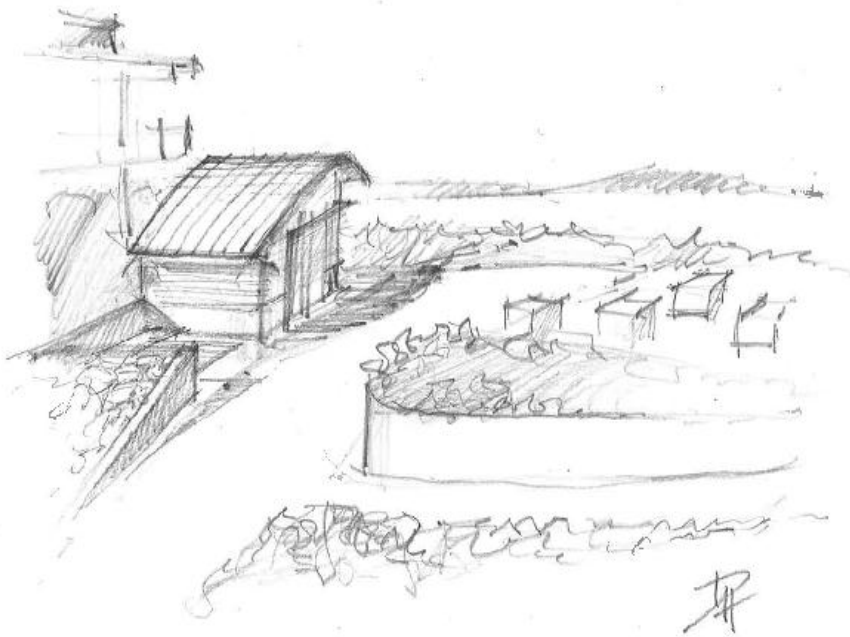


Brightwater Project, Swamp Creek Connector, Kenmore

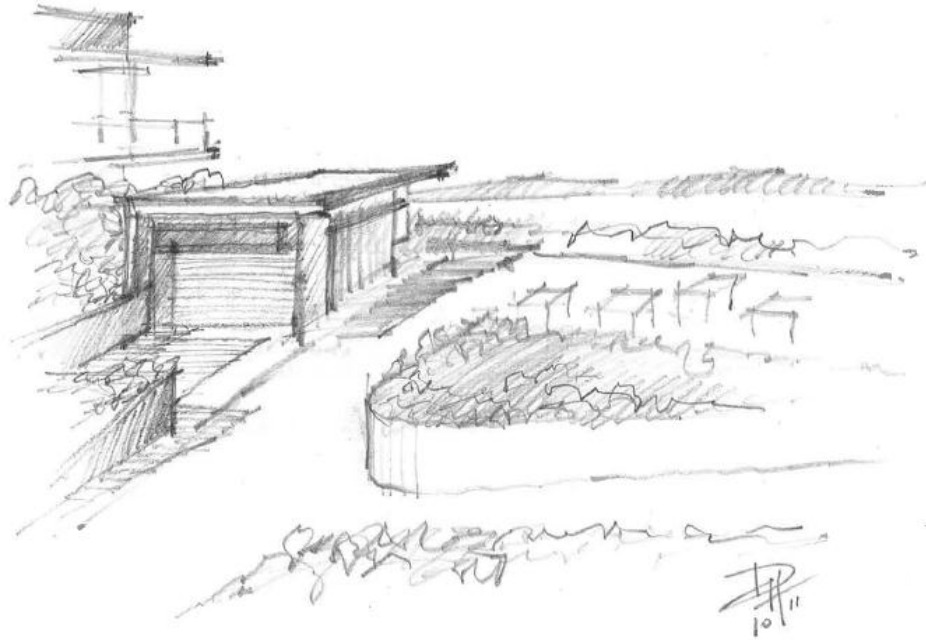


King County

How will the new elements blend in to the look of the neighborhood?



VAULTED ROOF OPTION



FLAT ROOF OPTION

APRIL 2012 – COMMUNITY DESIGN



Design elements

- Building materials
- Colors
- Building profile (flat, sloped or vaulted)
- Fencing
- Landscaping look and feel





King County

Department of Natural Resources and Parks
Wastewater Treatment Division

NORTH BEACH

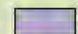
CSO CONTROL PROJECT TIMELINE

JANUARY 2012

Community & Stakeholder
Outreach


Project website updates, newsletters, flyers, and response to community questions


SEPA & Public Comment
Period


 April – May


Early Design
Activities

 Develop design


 August 6 - Community meeting to meet the Design Team and pump station tour

 January 25 - Community meeting on building size and storage size and location

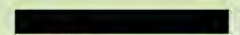
 April - Design workshop on building design and landscaping


 Fall 2011 - Field investigations


Permitting

 Permit application/public comment periods


Final Design
Activities

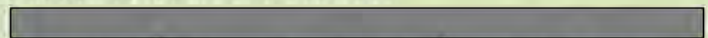
 Develop final design

 Summer - On site community meeting

 December 31, 2012 - Submit final design to Ecology

Construction

 Spring - Preconstruction community meeting to provide construction schedule and activities


Construction project updates, community briefings, and meetings as needed

Contact Us

- Monica Van der Vieren at (206) 263-7301 or Monica.vandervieren@kingcounty.gov
- More information on the web <http://www.kingcounty.gov/environment/wtd/Construction/Seattle/NBeachCSOStorage>



King County

Questions?