



Cleaning and Restoring Water for our Community...

King County
Metropolitan Water Pollution Abatement
Advisory Committee
May 2, 2007

Karla Fowler
Director of Planning & Programs

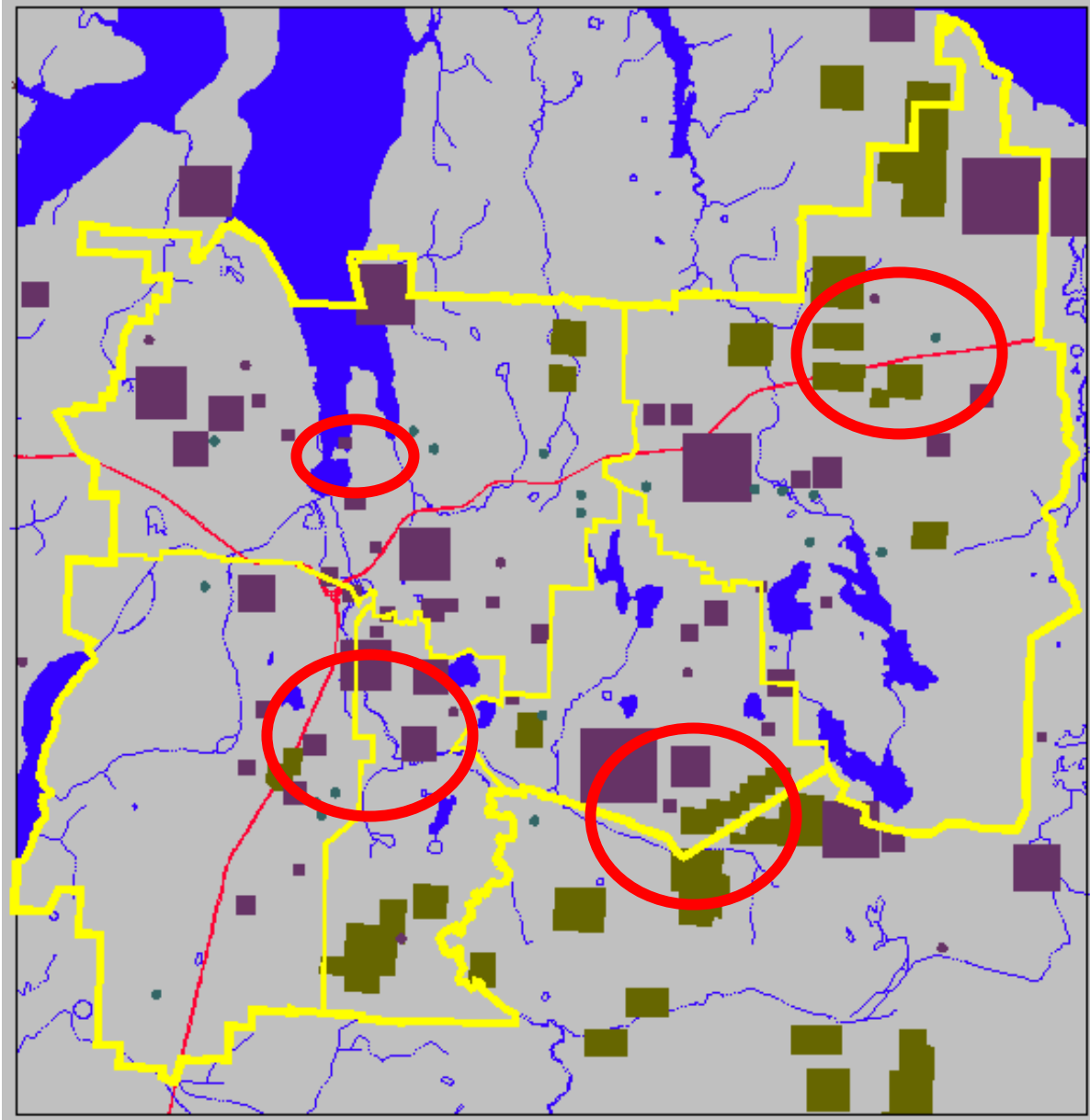






Reclaim

Recharge







State Department of General Administration



Irrigation at:

- 💧 Heritage Park
- 💧 Marathon Park
- 💧 Deschutes Parkway
- 💧 Capitol Campus (next phase)



Port of Olympia



- 💧 Irrigation
- 💧 Dust suppression
- 💧 Landscaping pond

City of Olympia



- 💧 Irrigation at Percival Landing
- 💧 Filling water trucks



SPLASH!

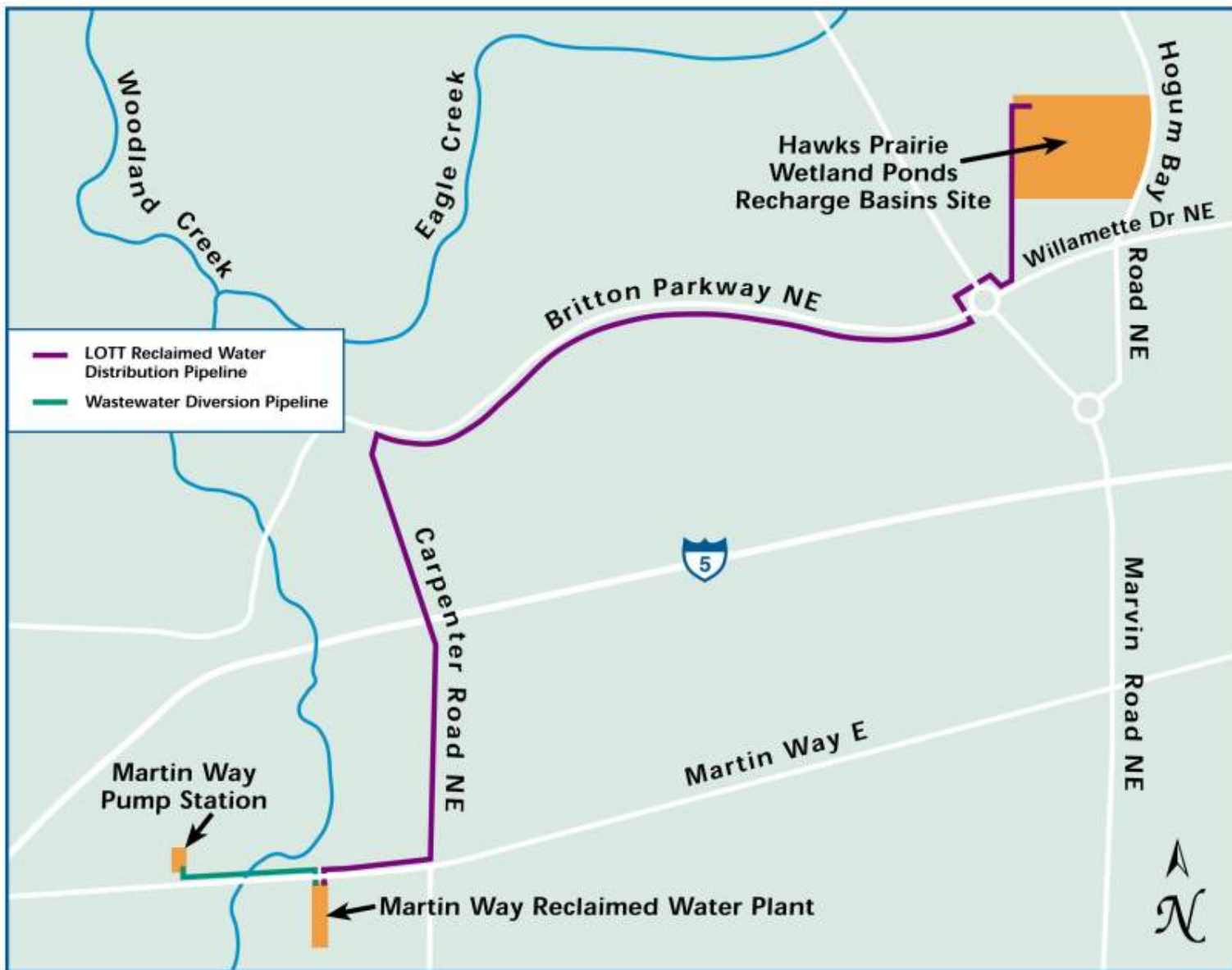
Reclaimed Water: A New Water Resource





















Water (10/08/13) 10/08/13 2



The Right Water for the Right Use

We're using
water wisely by
irrigating with
reclaimed water



Do Not Drink
from the Irrigation System

Lott Alliance

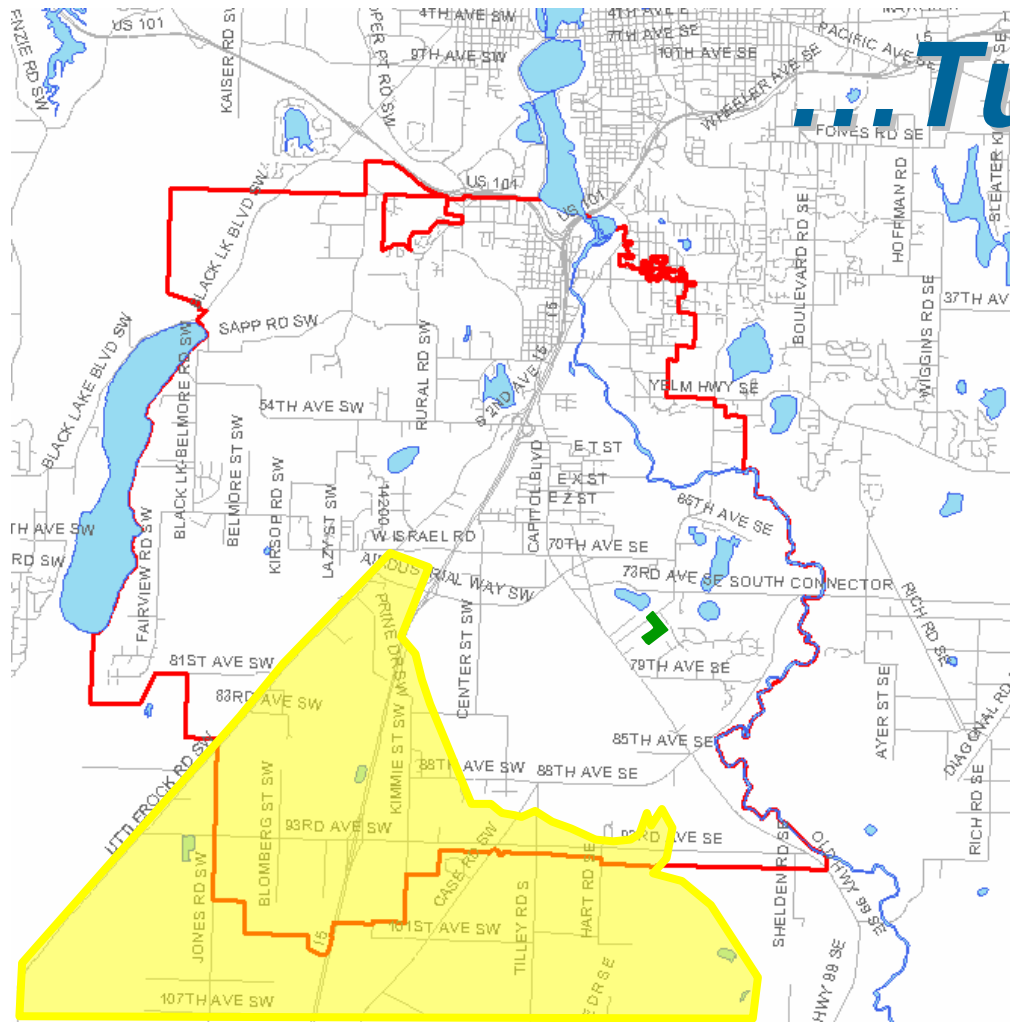
Future Plans...



...Chambers Prairie

Future Plans...

...Tumwater



Legend

Recharge Site



Tumwater UGA



Salmon Creek Basin



“Who pays and how much?”

Two Sources of Revenue...



**New
Connection
Fees**



**Monthly
Rates**

Two Types of Projects...

System Improvements



**91% Rates
9% Connection Fees**

New Capacity



**88% Connection Fees
12% Rates**

Current \$\$\$...



**New
Connection
Fees**

\$3448.70




**Monthly
Rates**

\$25.50

Reclaimed Water Revenues?

\$1 per year



A vertical strip on the left side of the slide shows a close-up of blue water with ripples and small waves.

***“So we’re going to
produce the water,
now what?”***

DOE/DOH

LOTT + Partner Jurisdictions

Partners

State
Reclaimed
Water
Permit

General
Interlocal
Agreement
with
Distribution
Methodology

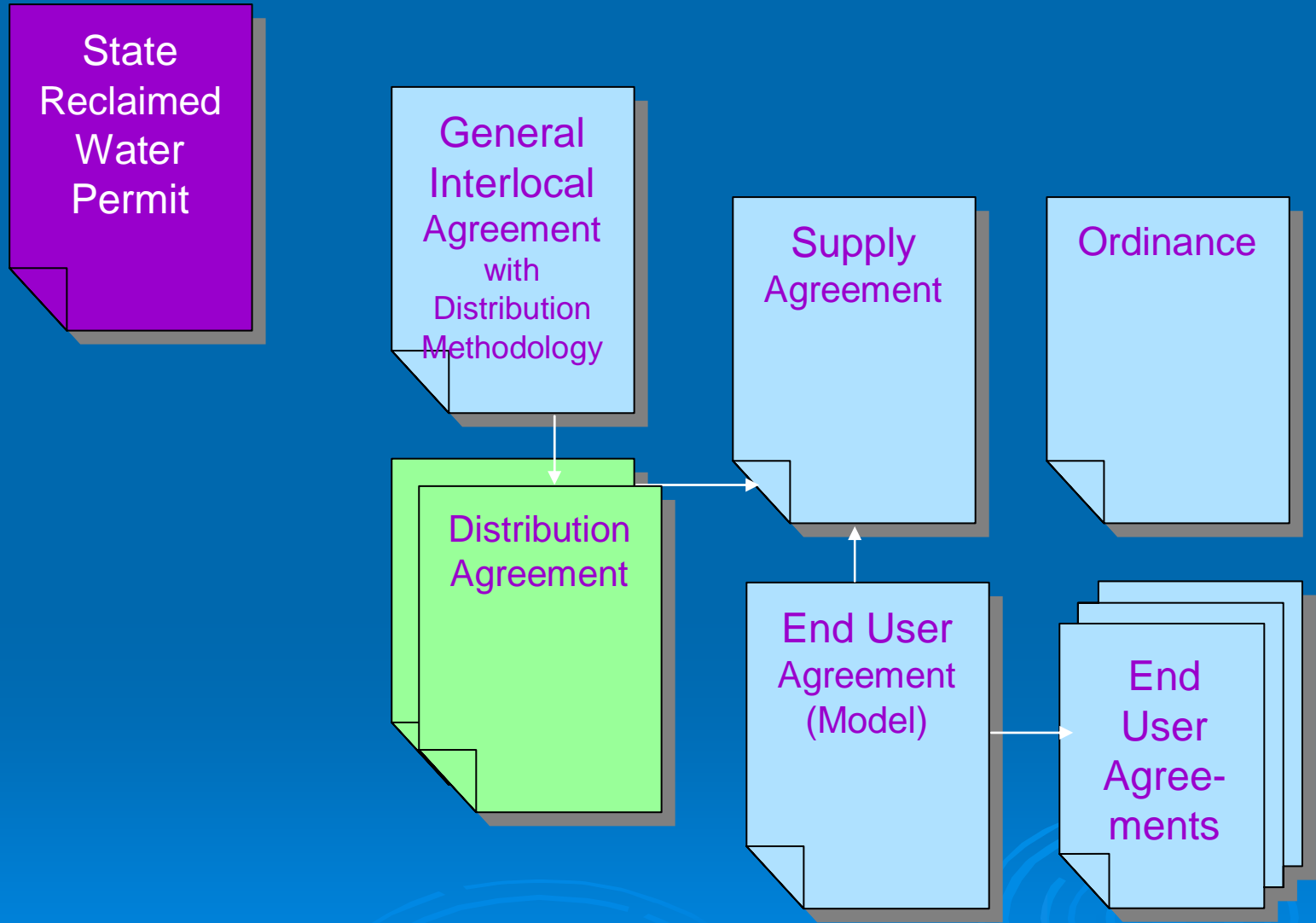
Supply
Agreement

Ordinance

Distribution
Agreement

End User
Agreement
(Model)

End
User
Agree-
ments





LOTT
Wastewater
Alliance

MAR 30 2005



February 2005



Reclaimed Water at the Budd Inlet Treatment Plant

Bringing the First Reclaimed Water to Our Community

The Budd Inlet Reclaimed Water Facility is the first of four planned reclaimed water facilities within the Lacey-Olympia-Tumwater urban growth area. This sand filter system is designed to clean water to Class A Reclaimed Water standards so it can be used in the community instead of being released into Budd Inlet.



The LOTT Alliance's first Class A Reclaimed Water is now being produced at its central Budd Inlet Treatment Plant. Construction was completed in 2004. The City of Olympia plans to distribute the water to users beginning in 2005.

The Budd Inlet Reclaimed Water Facility operates under a State Reclaimed Water Permit issued jointly by the Departments of Ecology and Health. The Permit took effect March 1, 2004.

The reclaimed water will be available to users in the Downtown Olympia, Port of Olympia, and State Capitol Campus areas. These earliest uses of Class A Reclaimed Water in our community will help demonstrate the quality and benefits of this valuable new water supply.

How it Works

In LOTT's normal treatment process, wastewater is pumped to the Budd Inlet Treatment Plant, receives a primary and secondary treatment, and removal and ultraviolet disinfection. A portion of the treated effluent is sent to the new Reclaimed Water Facility to be treated to Class A standards. A sodium hypochlorite solution is added to the reclaimed water. This additional disinfection ensures that no chlorine residual throughout distribution.

The Budd Inlet Plant's Reclaimed Water is produced on a daily basis, matching actual use needs. Initially, matching actual use needs will be done on-site. As the stored water becomes available on-site, pipelines leaving the plant will be used to transport the Reclaimed Water to sites where it is used.

High Profile First Users

The City of Olympia will be the first user of the Budd Inlet Facility. Several possible users include:

- Irrigation at the State's Heritage Capital Campus
- Irrigation at City parks in the downtown area
- Irrigation, equipment washdown, and construction pond at the Port of Olympia
- Irrigation, pump seals, cleaning at the Plant
- Toilet flushing and cleaning of Pump Station

A New Water Resource

for our community



February 2005



Coming Down the Pipe... Hawks Prairie Reclaimed Water Satellite

Providing New Treatment Capacity for LOTT and a New Source of Water for Our Community

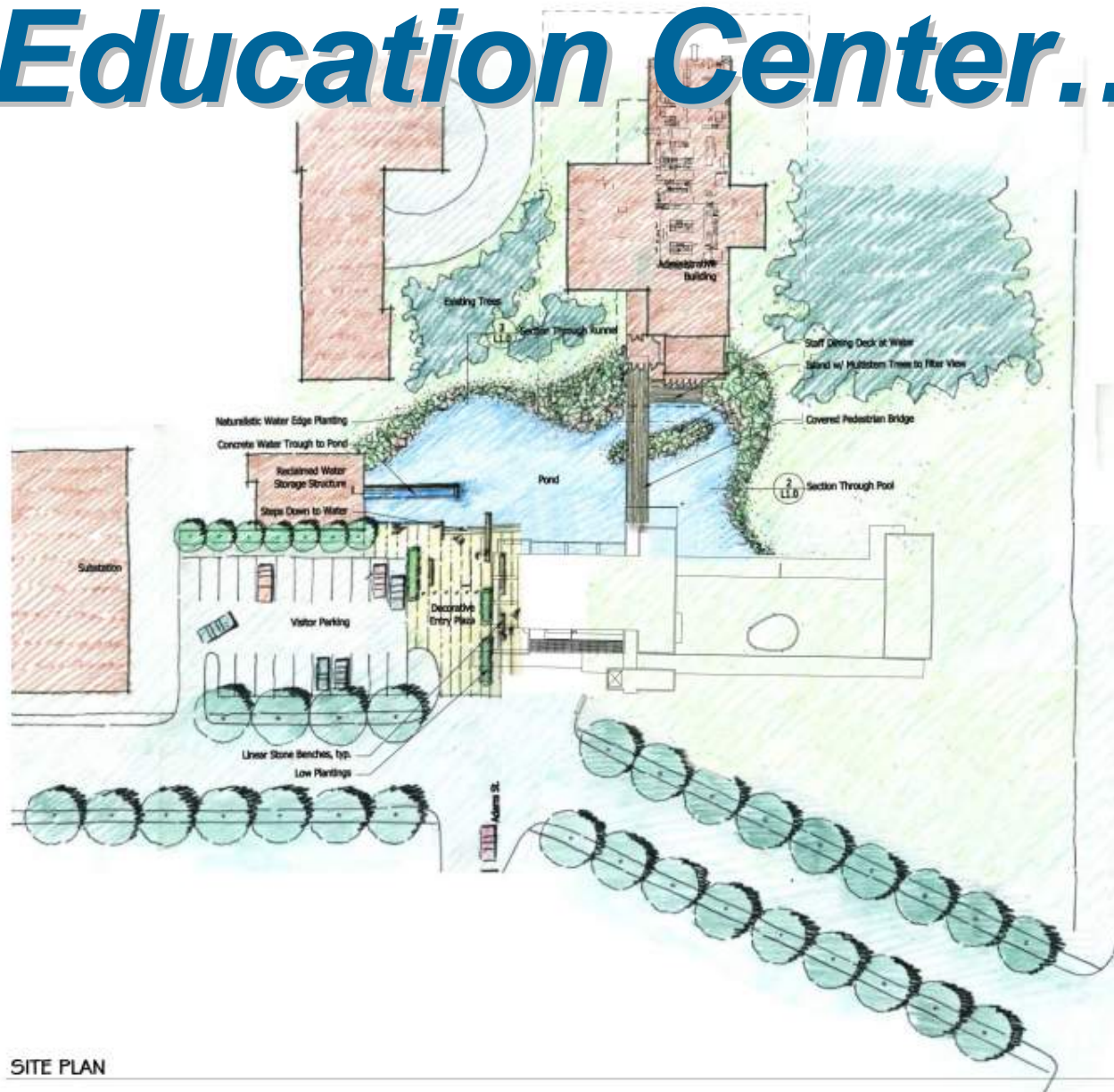
The Hawks Prairie Reclaimed Water Satellite will provide the first increments of new treatment capacity under LOTT's Wastewater Resource Management Plan. A new treatment facility will clean water to Class A Reclaimed Water standards so it can be beneficially used in the community. The project includes the Martin Way Reclaimed Water Plant, 30 acres of Constructed Wetland Ponds, ten acres of Groundwater Recharge Basins, and three miles of distribution pipelines.

Martin Way Reclaimed Water Plant

The Martin Way Reclaimed Water Plant will treat 2 million gallons of wastewater daily, producing high quality water to serve many community needs. The Plant has been designed to be aesthetically pleasing and compatible with its surrounding neighborhood, featuring a contemporary northwest color scheme. It's located on a 3.4-acre site on Martin Way. Most of the treatment process will occur in above-ground tanks, covered with water-efficient eco-roofs featuring solar panels. The Plant will be expandable to 5 mgd.



Education Center...



SITE PLAN

