
Conveyance System Improvement Program Update

PSRC Population and Employment Forecast Summary

August 2014



Table of Contents

Conveyance System Improvement (CSI) Planning Areas	3
Hidden Lake CSI Planning Area.....	4
NW Lake Washington CSI Planning Area	7
North Lake Washington CSI Planning Area	10
NE Lake Washington CSI Planning Area	14
SE Lake Washington CSI Planning Area	18
South Lake Washington CSI Planning Area	21
North Lake Sammamish CSI Planning Area	25
South Lake Sammamish CSI Planning Area	28
North Green River CSI Planning Area	31
South Green River/Kent CSI Planning Area	35
South Green River/Soos CSI Planning Area	38
South Green River/Auburn CSI Planning Area	41

Introduction

King County Wastewater Treatment Division (WTD) is carrying out an update to the Conveyance System Improvement (CSI) Program. The program was last updated in 2007. The documentation from that update is available here:

<http://www.kingcounty.gov/environment/wastewater/CSI.aspx>.

WTD utilizes forecasts from the Puget Sound Regional Council (PSRC) to project the portion of wastewater flows produced from homes and businesses. WTD forecasts wastewater flows by model basins. The model basins are delineations of subareas in the WTD service area used to quantify flow contributed by local sewer systems to various portions of the regional conveyance system. The PSRC 2013 Land Use Forecast dataset that includes population and employment projections for the region is being used for the CSI Program Update. In order to apply the forecast data it has been apportioned to WTD model basins.

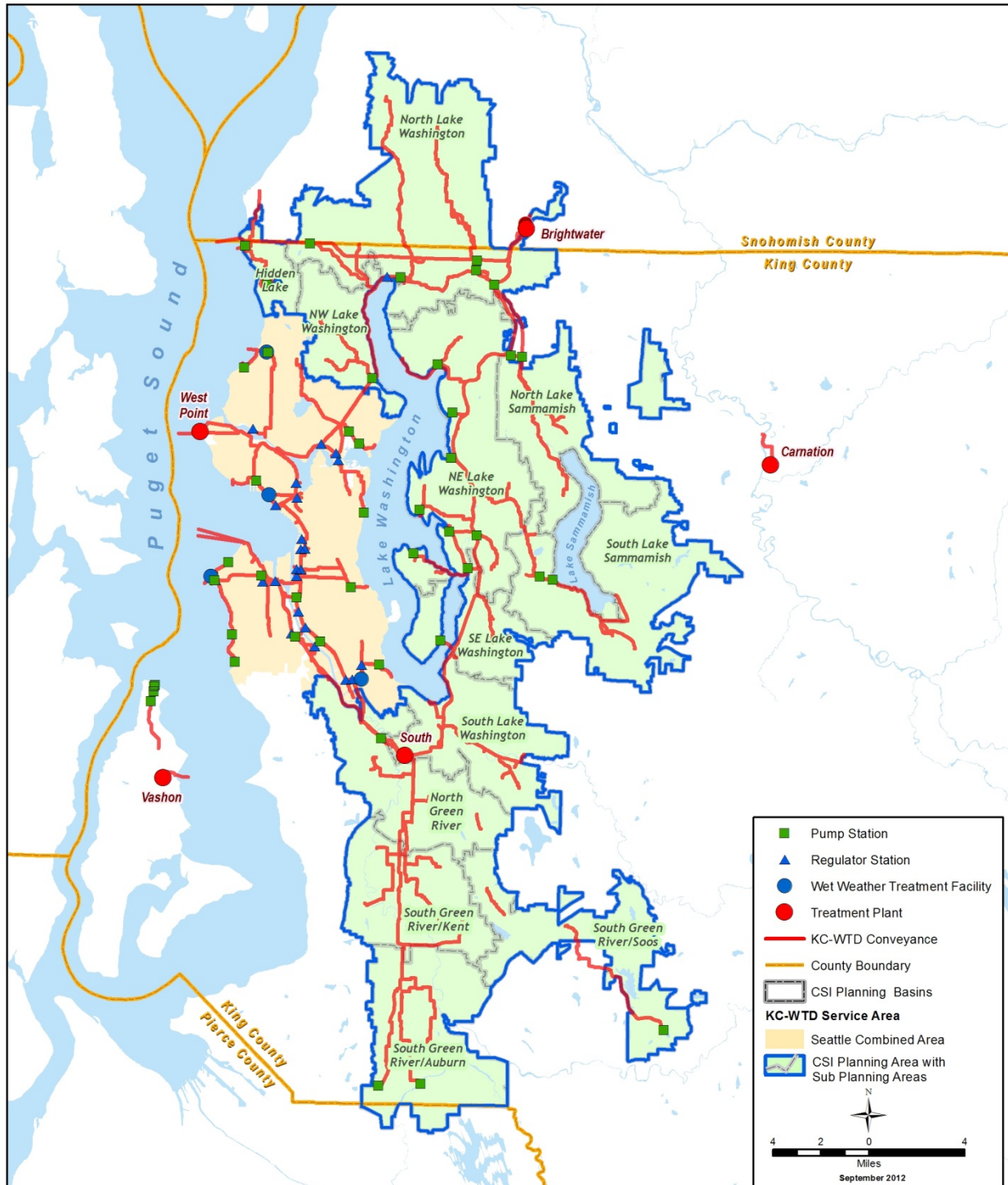
This document summarizes the PSRC sewer population and employment forecast data by WTD model basin. This summary was assembled for presentation to the Metropolitan Water Pollution Abatement Advisory Committee (MWPAAC) Engineering & Planning (E&P) Subcommittee and distribution to local agencies. The document includes a map of each CSI Planning Area that displays model basin areas, a bar graph that depicts the forecast population and employment for each model basin by decade from 2010 to 2040, and tabular forecast data for each model basin.

Local agency review and input on the forecast summary is encouraged. When reviewing the attached maps and data graphs please provide comments responding to the questions below:

1. Are the population and employment forecasts consistent with local agency comprehensive plans and zoning?
2. Are there large developments planned for any basins that do not appear to be reflected in forecast data?
3. Any other observations on the forecast data?

If you have comments or questions about the model basin population and employment forecast data please contact the CSI Program Project Manager Steve Tolzman at 206.477.5459 or steve.tolzman@kingcounty.gov.

Conveyance System Improvement (CSI) Planning Areas

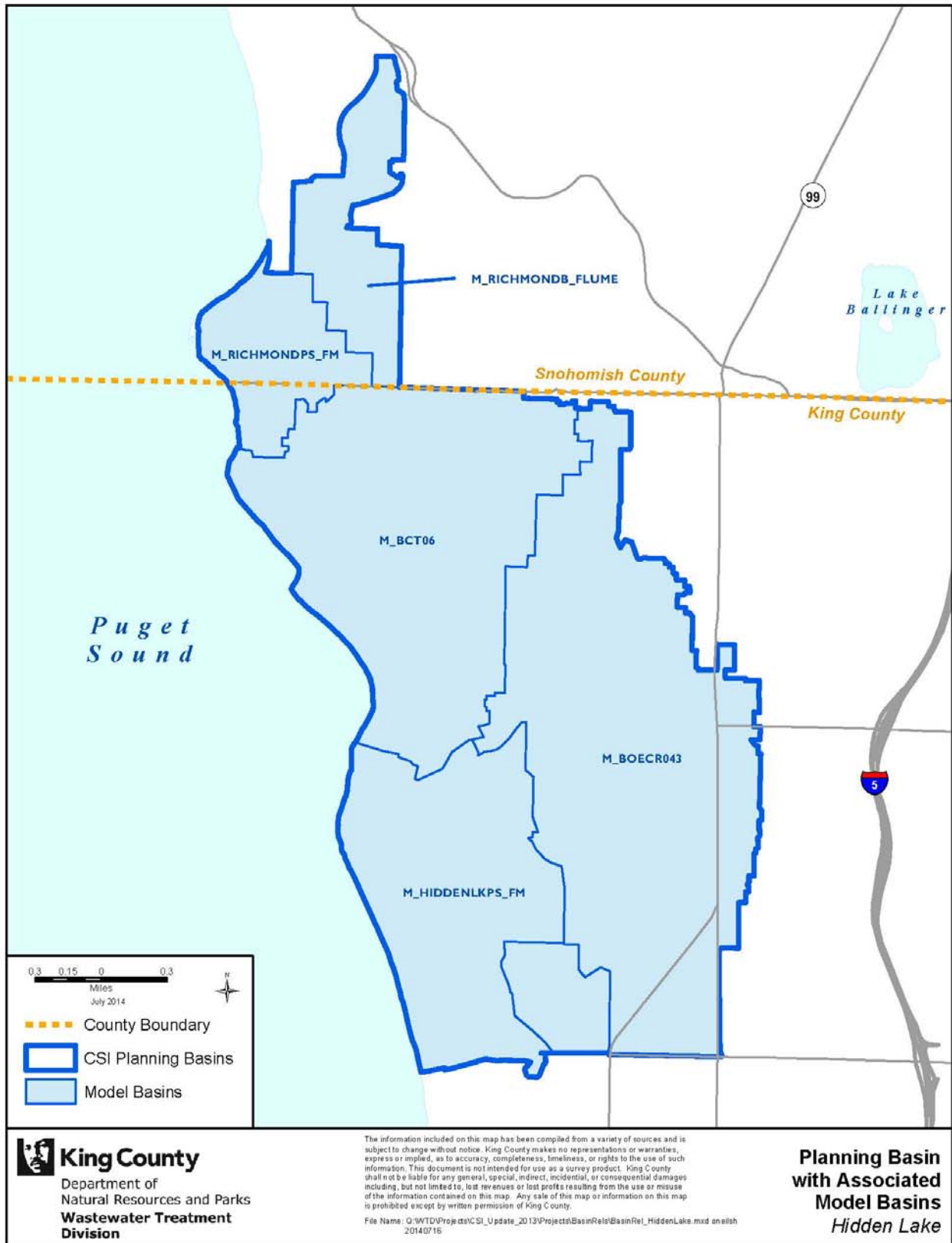


King County
 Department of
 Natural Resources and Parks
**Wastewater Treatment
 Division**

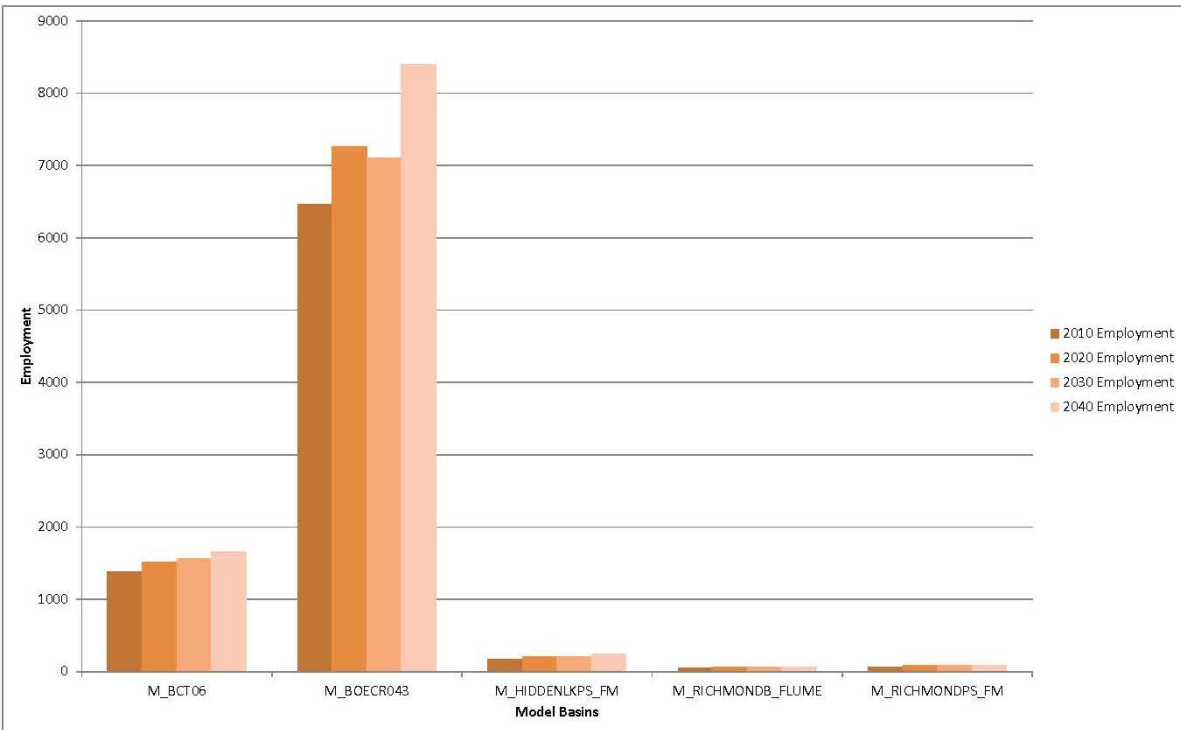
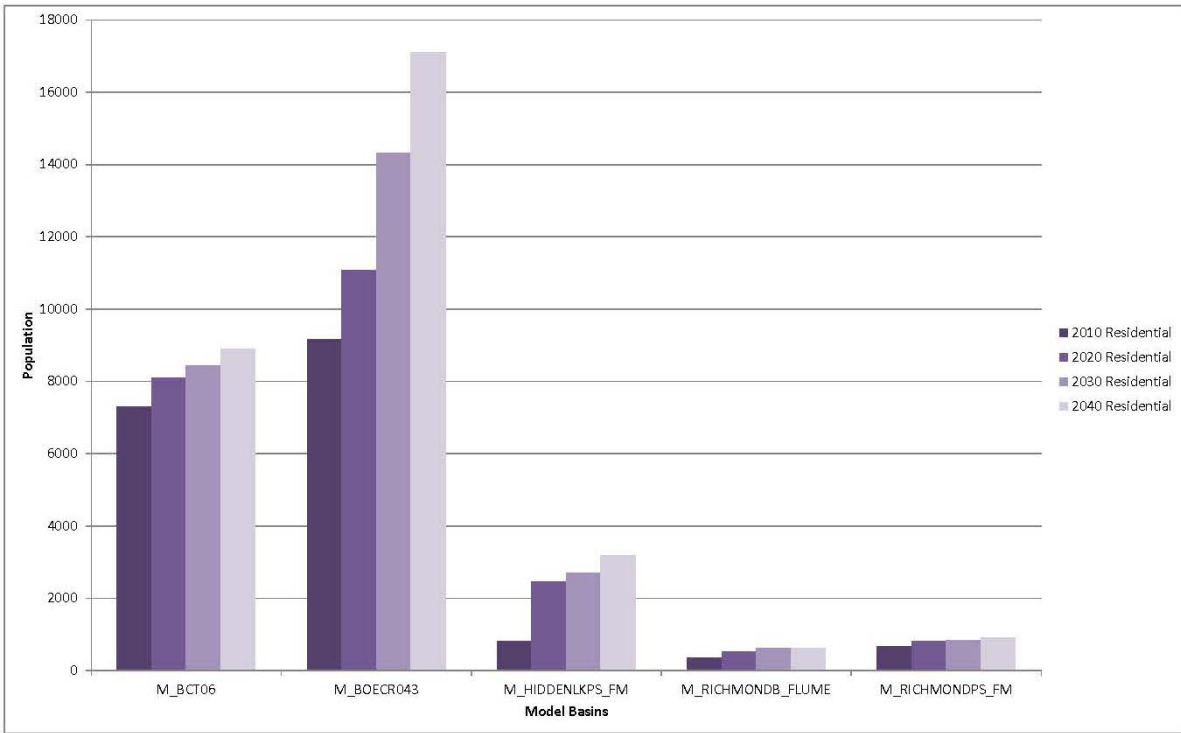
The information included on this map has been compiled from a variety of sources and is subject to change without notice. King County makes no representations or warranties, express or implied, as to accuracy, completeness, timeliness, or rights to the use of such information. This document is not intended for use as a survey product. King County shall not be liable for any general, special, indirect, incidental, or consequential damages including, but not limited to, lost revenues or lost profits resulting from the use or misuse of the information contained on this map. Any sale of this map or information on this map is prohibited except by written permission of King County.
 File Name: D:\NRP\1\projects\WTD\Projects\CSI_Project\Projects\CSI_Planning_20120926.mxd
 Shaun O'Neil 20120926

**King County Wastewater
 Service Area and Facilities**
 CSI Planning Area

Hidden Lake Planning Area - Model Basins



Hidden Lake Planning Area Model Basin - Population and Employment Forecast Graphs



Hidden Lake Planning Area - Model Basin Population and
Employment Forecasts Data

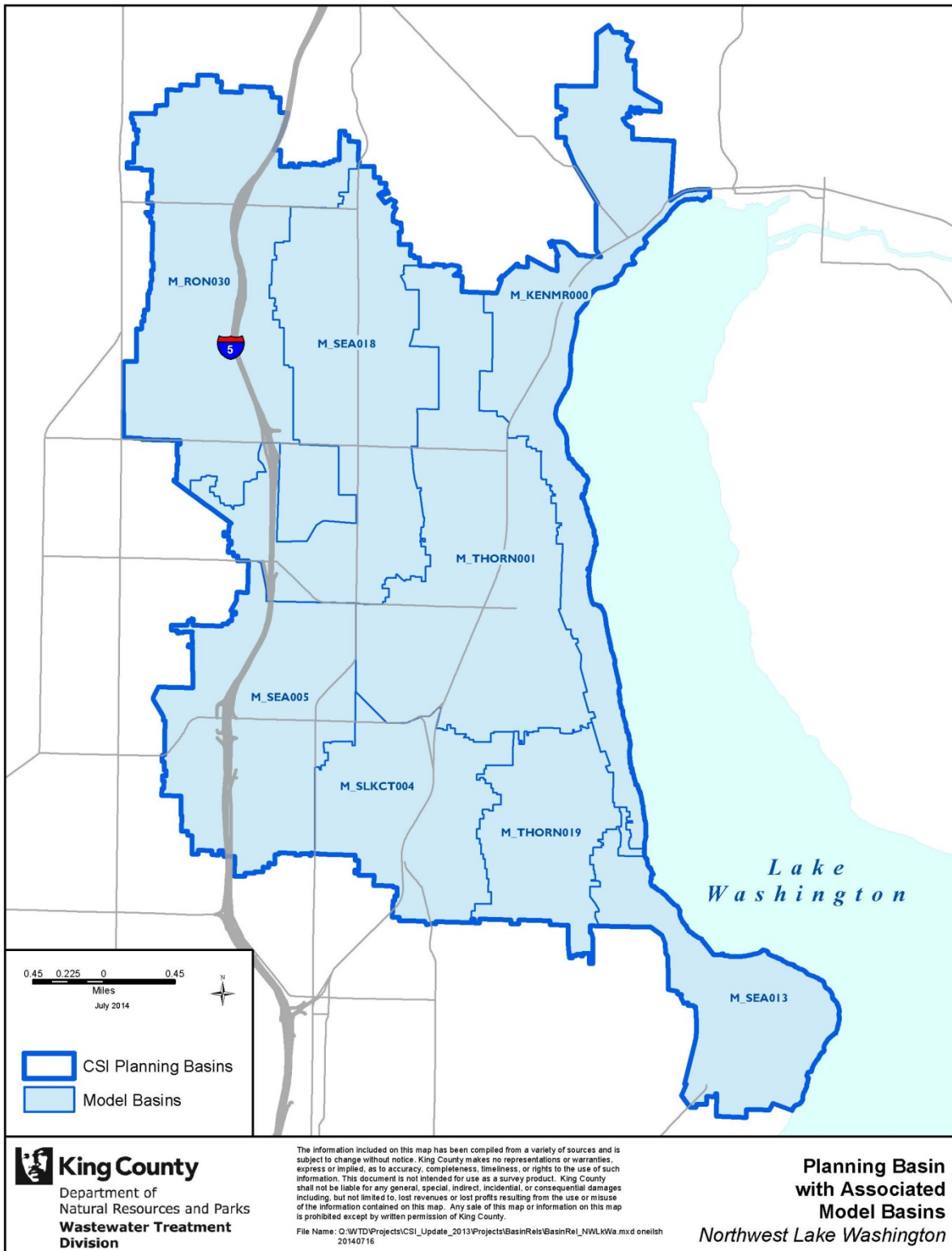
Sewered Population

Model Basins	2010 Residential	2020 Residential	2030 Residential	2040 Residential
M_BCT06	7,291	8,088	8,438	8,889
M_BOECR043	9,169	11,068	14,329	17,098
M_HIDDENLKPS_FM	808	2,469	2,701	3,177
M_RICHMONDB_FLUME	365	530	622	615
M_RICHMONDPS_FM	682	817	835	914

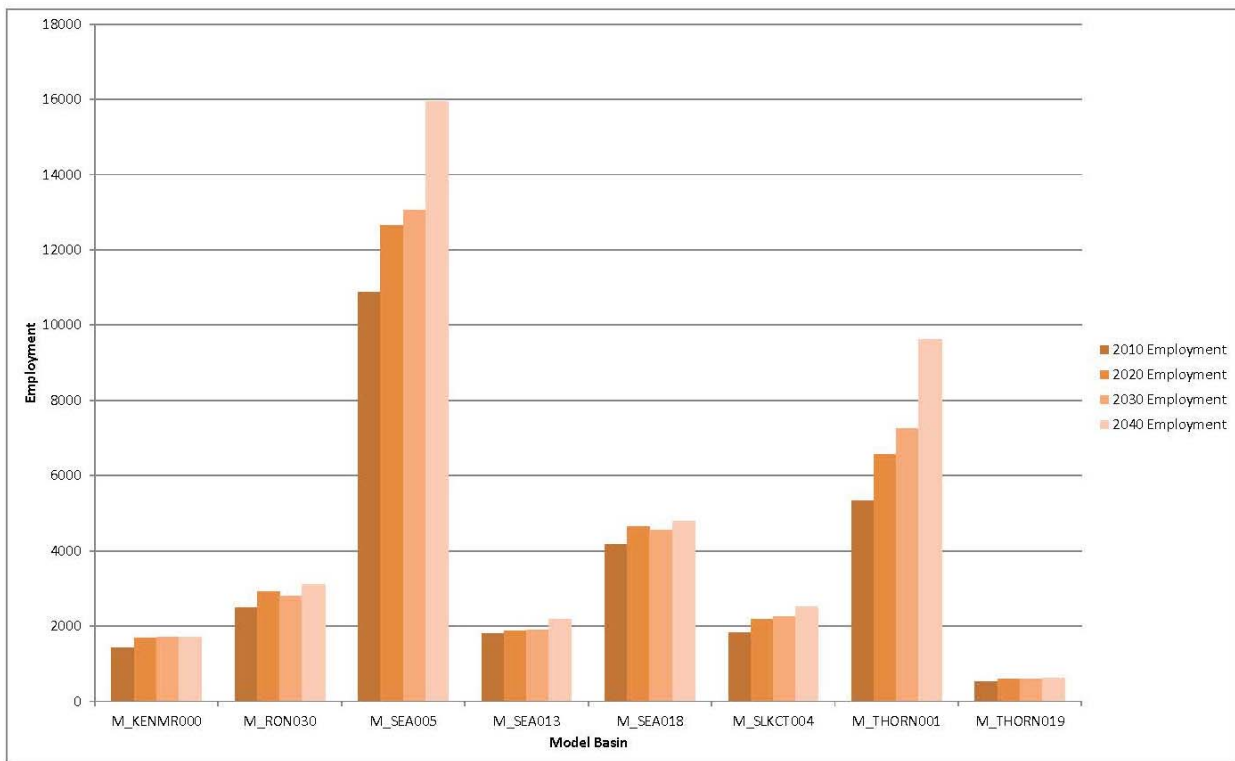
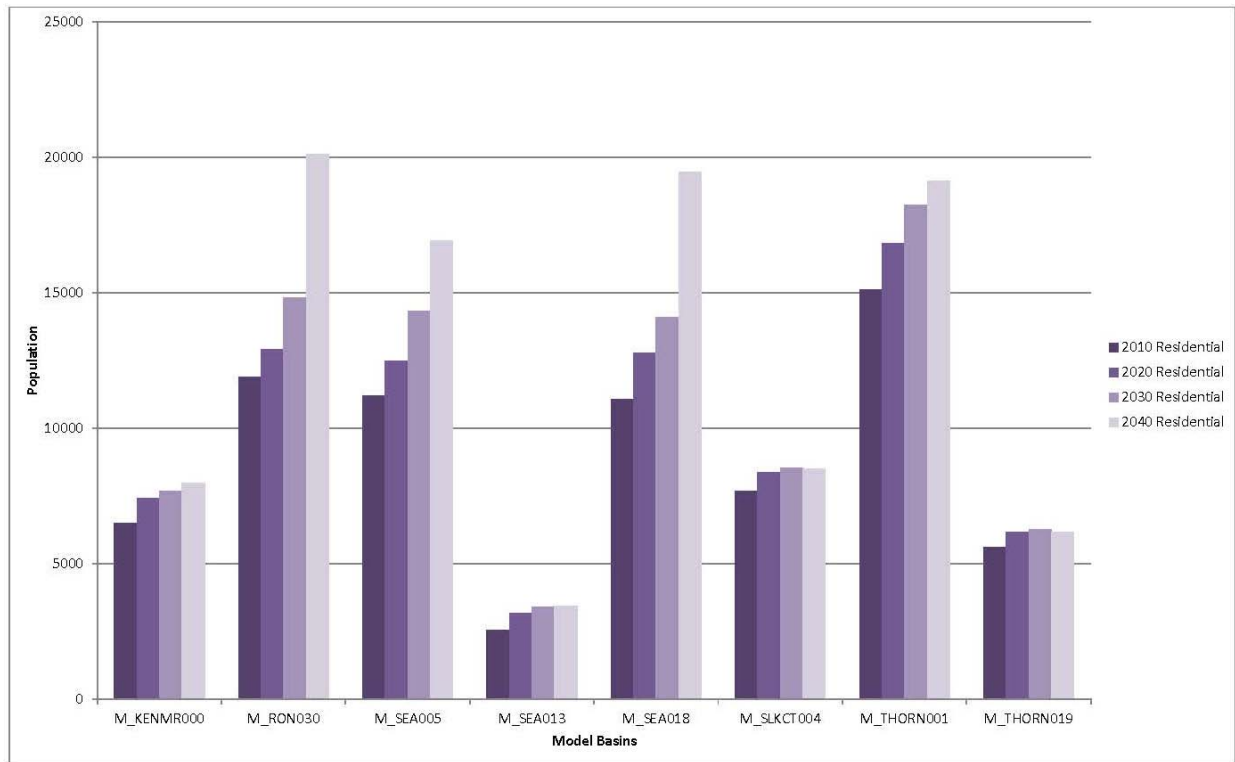
Employment

Model Basins	2010 Employment	2020 Employment	2030 Employment	2040 Employment
M_BCT06	1,381	1,520	1,559	1,660
M_BOECR043	6,462	7,259	7,108	8,396
M_HIDDENLKPS_FM	172	208	212	244
M_RICHMONDB_FLUME	56	58	62	64
M_RICHMONDPS_FM	63	82	85	89

NW Lake Washington Planning Area - Model Basins



NW Lake Washington Planning Area - Model Basin Population and Employment Forecasts Graphs



NW Lake Washington Planning Area - Model Basin Population and Employment Forecasts Data

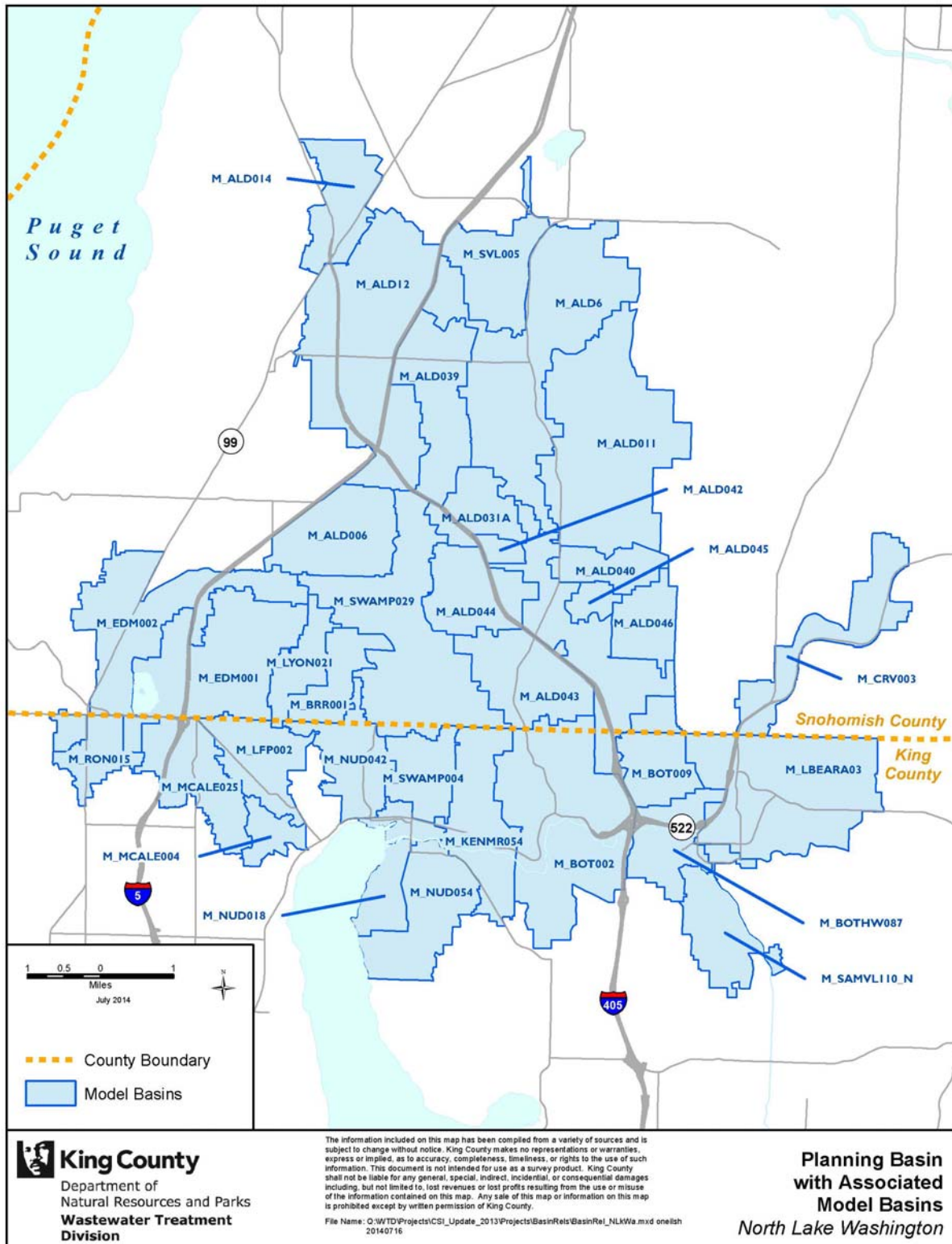
Sewered Population

Model Basins	2010 Residential	2020 Residential	2030 Residential	2040 Residential
M_KENMR000	6,502	7,398	7,660	7,969
M_RON030	11,889	12,915	14,803	20,101
M_SEA005	11,195	12,470	14,338	16,932
M_SEA013	2,556	3,178	3,389	3,428
M_SEA018	11,081	12,777	14,106	19,469
M_SLKCT004	7,661	8,362	8,536	8,491
M_THORN001	15,095	16,812	18,224	19,119
M_THORN019	5,605	6,161	6,255	6,157

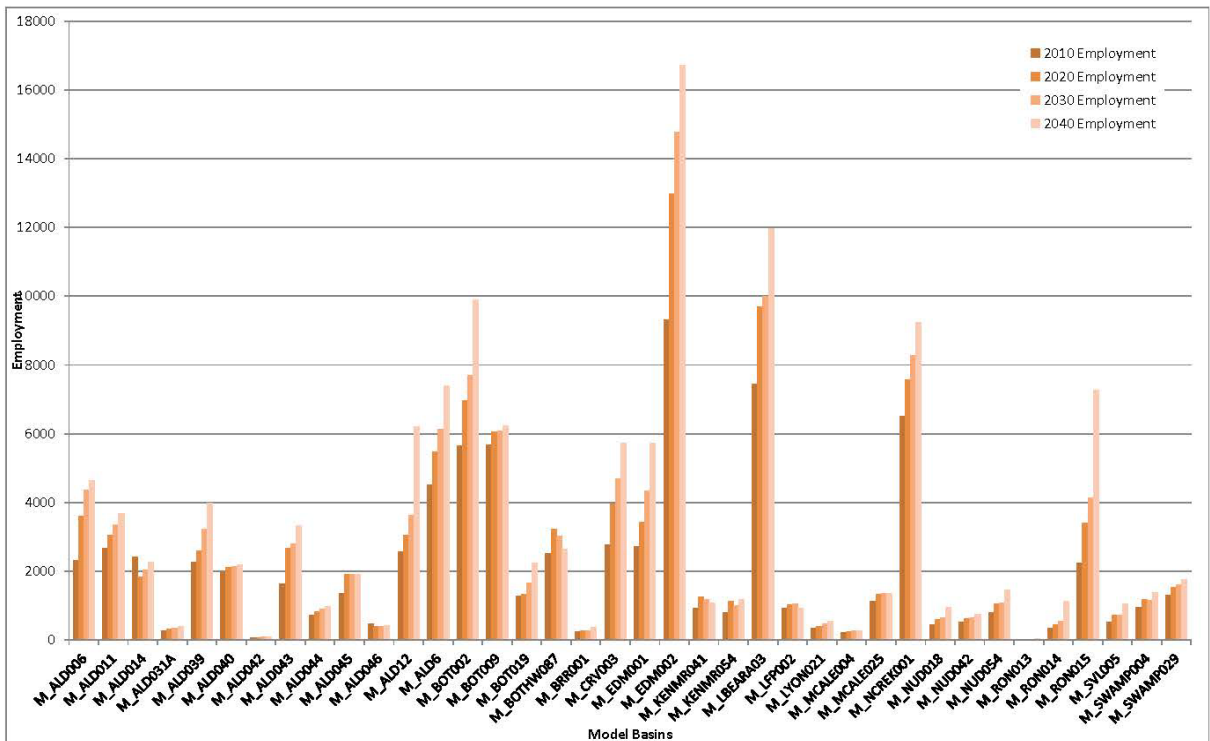
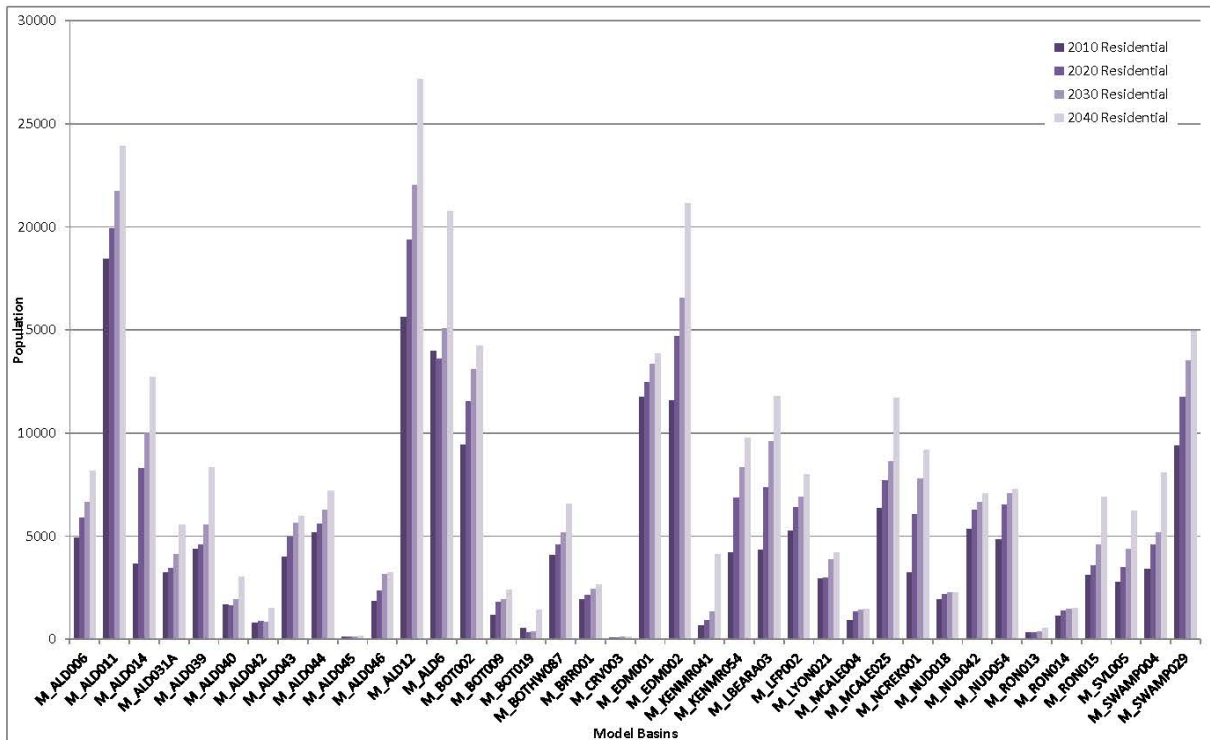
Employment

Model Basins	2010 Employment	2020 Employment	2030 Employment	2040 Employment
M_KENMR000	1,415	1,675	1,702	1,702
M_RON030	2,482	2,919	2,808	3,100
M_SEA005	10,871	12,651	13,060	15,945
M_SEA013	1,803	1,868	1,897	2,172
M_SEA018	4,174	4,645	4,550	4,790
M_SLKCT004	1,831	2,189	2,251	2,521
M_THORN001	5,325	6,559	7,261	9,624
M_THORN019	519	582	599	622

North Lake Washington Planning Area - Model Basins



North Lake Washington Planning Area - Model Basin Population and Employment Forecasts Graphs



North Lake Washington Planning Area - Model Basin Population and Employment Forecasts Data

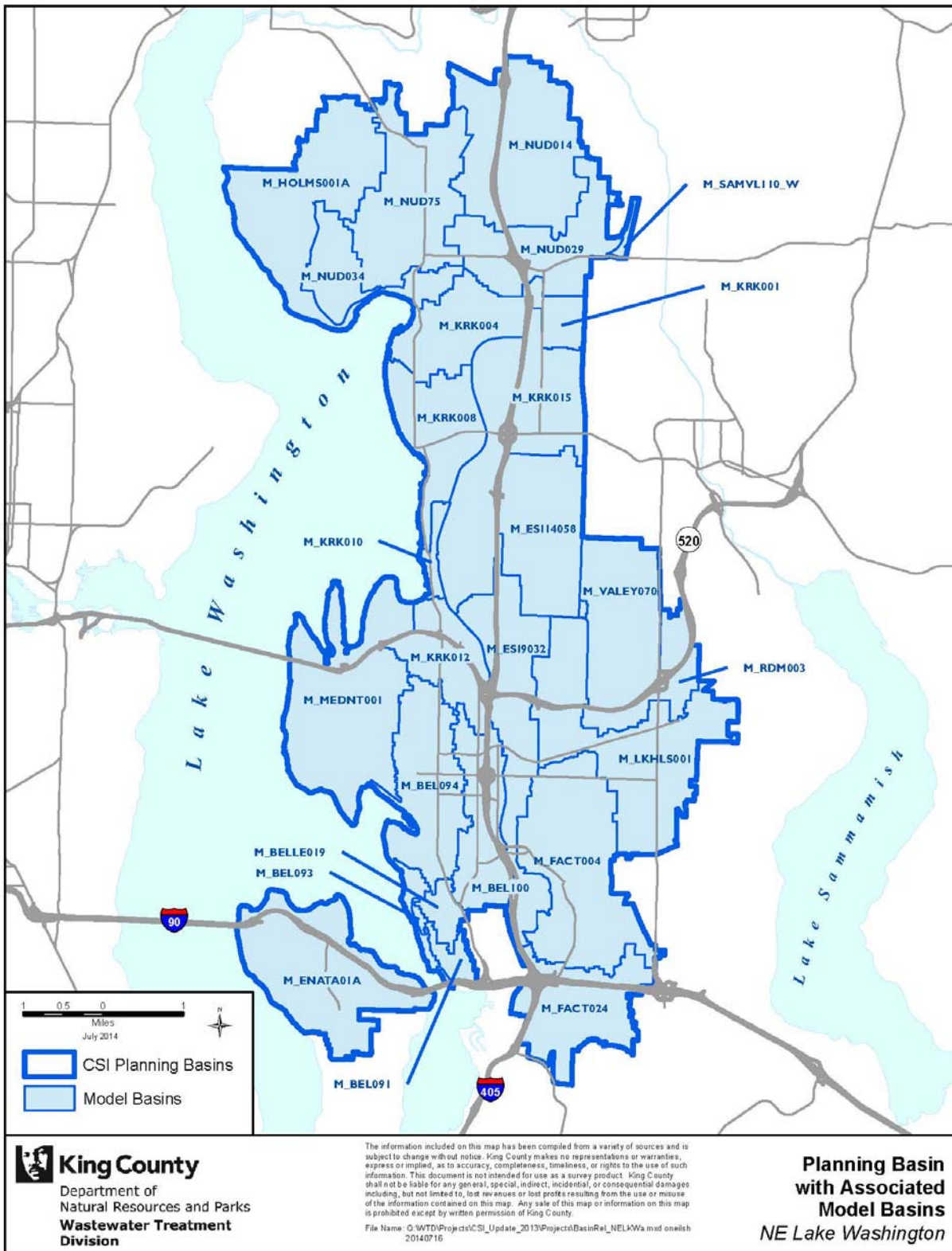
Sewered Population

Model Basins	2010 Residential	2020 Residential	2030 Residential	2040 Residential
M_ALD006	4,917	5,878	6,652	8,164
M_ALD011	18,438	19,933	21,728	23,919
M_ALD014	3,673	8,301	10,000	12,698
M_ALD031A	3,217	3,456	4,124	5,532
M_ALD039	4,386	4,567	5,548	8,326
M_ALD040	1,684	1,621	1,946	3,009
M_ALD042	813	863	849	1,514
M_ALD043	3,979	4,953	5,647	5,958
M_ALD044	5,153	5,614	6,274	7,197
M_ALD045	126	127	129	147
M_ALD046	1,841	2,350	3,165	3,236
M_ALD12	15,609	19,356	22,027	27,154
M_ALD6	13,962	13,619	15,082	20,776
M_BOT002	9,429	11,532	13,111	14,239
M_BOT009	1,165	1,789	1,936	2,396
M_BOT019	551	345	380	1,418
M_BOTHW087	4,086	4,588	5,174	6,561
M_BRR001	1,921	2,143	2,456	2,644
M_CRV003	77	93	105	105
M_EDM001	11,734	12,451	13,333	13,845
M_EDM002	11,572	14,689	16,531	21,160
M_KENMR041	660	901	1,357	4,119
M_KENMR054	4,190	6,848	8,353	9,759
M_LBEARA03	4,337	7,378	9,588	11,768
M_LFP002	5,240	6,389	6,894	7,980
M_LYON021	2,936	2,970	3,858	4,207
M_MCALE004	935	1,322	1,404	1,482
M_MCALE025	6,354	7,690	8,630	11,706
M_NCREK001	3,228	6,073	7,796	9,181
M_NUD018	1,927	2,169	2,261	2,248
M_NUD042	5,333	6,272	6,629	7,059
M_NUD054	4,842	6,535	7,060	7,263
M_RON013	316	338	377	533
M_RON014	1,145	1,375	1,461	1,498
M_RON015	3,101	3,584	4,581	6,890
M_SVL005	2,769	3,489	4,370	6,220
M_SWAMP004	3,398	4,601	5,173	8,069
M_SWAMP029	9,397	11,739	13,509	14,965

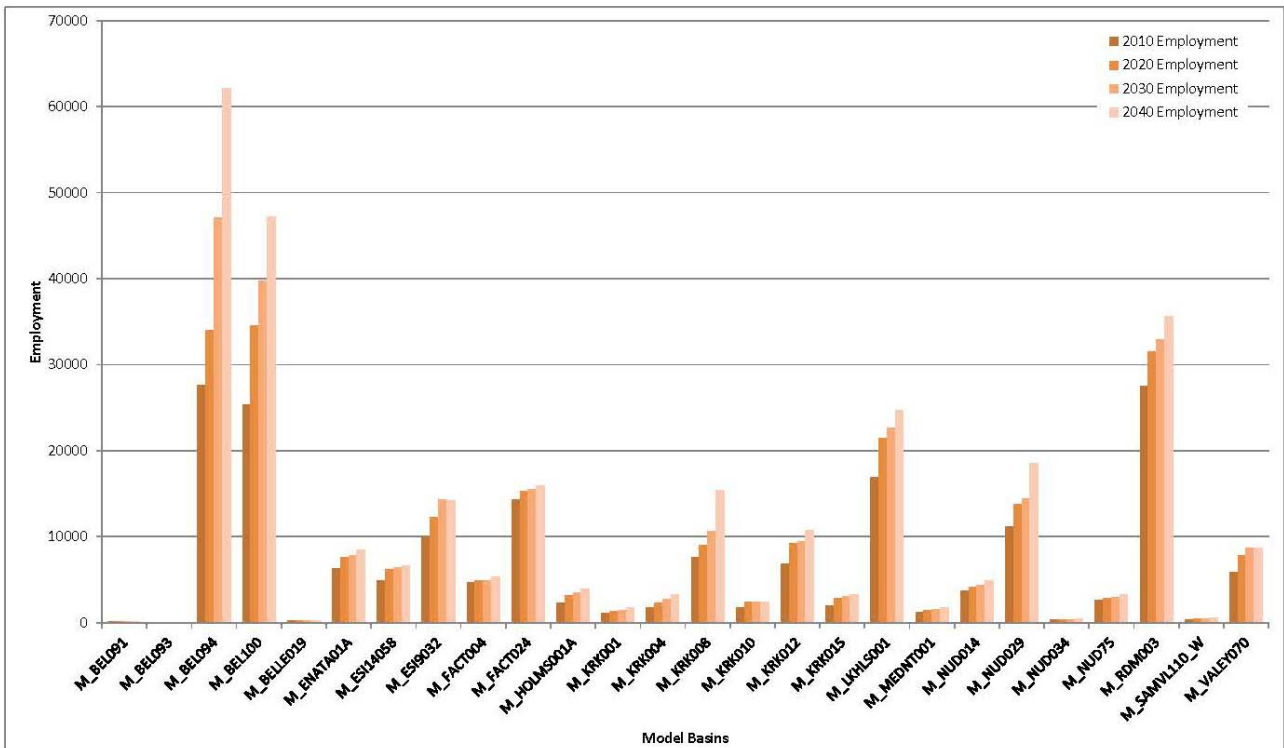
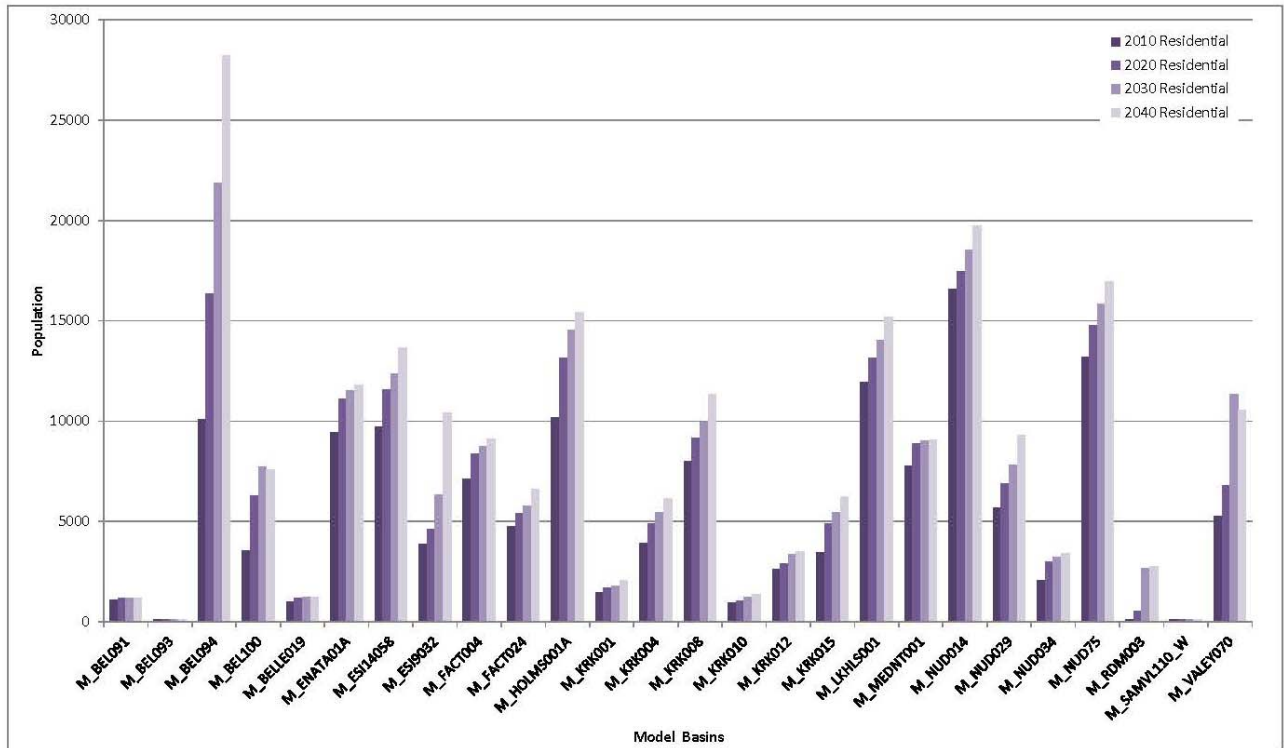
Employment

Model Basins	2010 Employment	2020 Employment	2030 Employment	2040 Employment
M_ALD006	2,305	3,614	4,364	4,632
M_ALD011	2,658	3,045	3,359	3,675
M_ALD014	2,409	1,823	2,037	2,264
M_ALD031A	260	306	339	385
M_ALD039	2,271	2,604	3,235	3,982
M_ALD040	1,993	2,102	2,143	2,196
M_ALD042	67	76	83	91
M_ALD043	1,628	2,669	2,800	3,321
M_ALD044	721	832	890	987
M_ALD045	1,357	1,905	1,907	1,907
M_ALD046	478	394	391	409
M_ALD12	2,573	3,057	3,618	6,216
M_ALD6	4,521	5,470	6,131	7,404
M_BOT002	5,648	6,974	7,687	9,892
M_BOT009	5,665	6,059	6,085	6,229
M_BOT019	1,267	1,335	1,657	2,235
M_BOTHW087	2,519	3,215	3,029	2,646
M_BRR001	233	267	277	362
M_CRV003	2,770	3,968	4,688	5,736
M_EDM001	2,723	3,416	4,349	5,737
M_EDM002	9,314	12,986	14,771	16,718
M_KENMR041	930	1,254	1,187	1,083
M_KENMR054	807	1,135	1,008	1,185
M_LBEARA03	7,434	9,706	10,006	11,970
M_LFP002	935	1,038	1,044	928
M_LYON021	331	406	468	538
M_MCALE004	215	237	257	271
M_MCALE025	1,119	1,320	1,352	1,346
M_NCREK001	6,503	7,577	8,268	9,243
M_NUD018	450	599	655	957
M_NUD042	513	630	636	742
M_NUD054	789	1,053	1,078	1,453
M_RON013	6	13	16	29
M_RON014	335	442	548	1,136
M_RON015	2,244	3,398	4,139	7,271
M_SVL005	527	726	731	1,039
M_SWAMP004	948	1,170	1,150	1,388
M_SWAMP029	1,297	1,528	1,613	1,749

NE Lake Washington Planning Area - Model Basins



NE Lake Washington Planning Area - Model Basin Population and Employment Forecasts Graphs



NE Lake Washington Planning Area - Model Basin Population and
Employment Forecasts Data

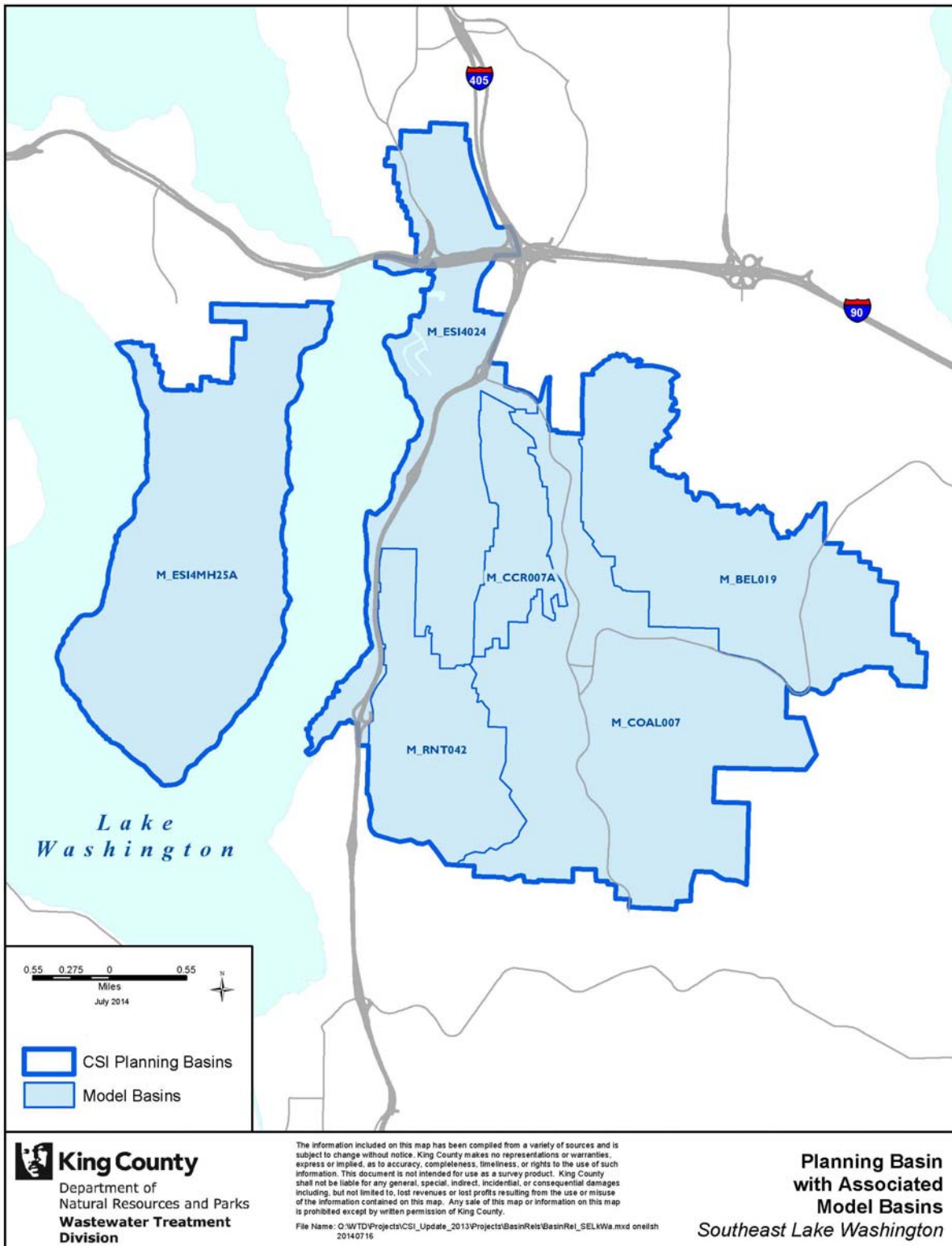
Sewered Population

Model Basins	2010 Residential	2020 Residential	2030 Residential	2040 Residential
M_BEL091	1,095	1,181	1,205	1,209
M_BEL093	97	116	119	119
M_BEL094	10,104	16,373	21,859	28,228
M_BEL100	3,553	6,274	7,734	7,569
M_BELLE019	997	1,173	1,226	1,219
M_ENATA01A	9,461	11,096	11,526	11,829
M_ESI14058	9,700	11,567	12,376	13,643
M_ESI9032	3,861	4,626	6,342	10,428
M_FACT004	7,105	8,380	8,763	9,135
M_FACT024	4,752	5,408	5,755	6,620
M_HOLMS001A	10,172	13,163	14,544	15,427
M_KRK001	1,488	1,705	1,769	2,062
M_KRK004	3,911	4,880	5,444	6,144
M_KRK008	7,985	9,182	9,958	11,340
M_KRK010	939	1,068	1,222	1,378
M_KRK012	2,606	2,895	3,345	3,500
M_KRK015	3,473	4,911	5,456	6,244
M_LKHLS001	11,961	13,137	14,017	15,173
M_MEDNT001	7,756	8,893	9,002	9,083
M_NUD014	16,576	17,470	18,541	19,759
M_NUD029	5,667	6,900	7,818	9,284
M_NUD034	2,056	3,013	3,213	3,420
M_NUD75	13,214	14,794	15,855	16,947
M_RDM003	118	539	2,660	2,770
M_SAMVL110_W	102	107	104	107
M_VALEY070	5,245	6,821	11,338	10,543

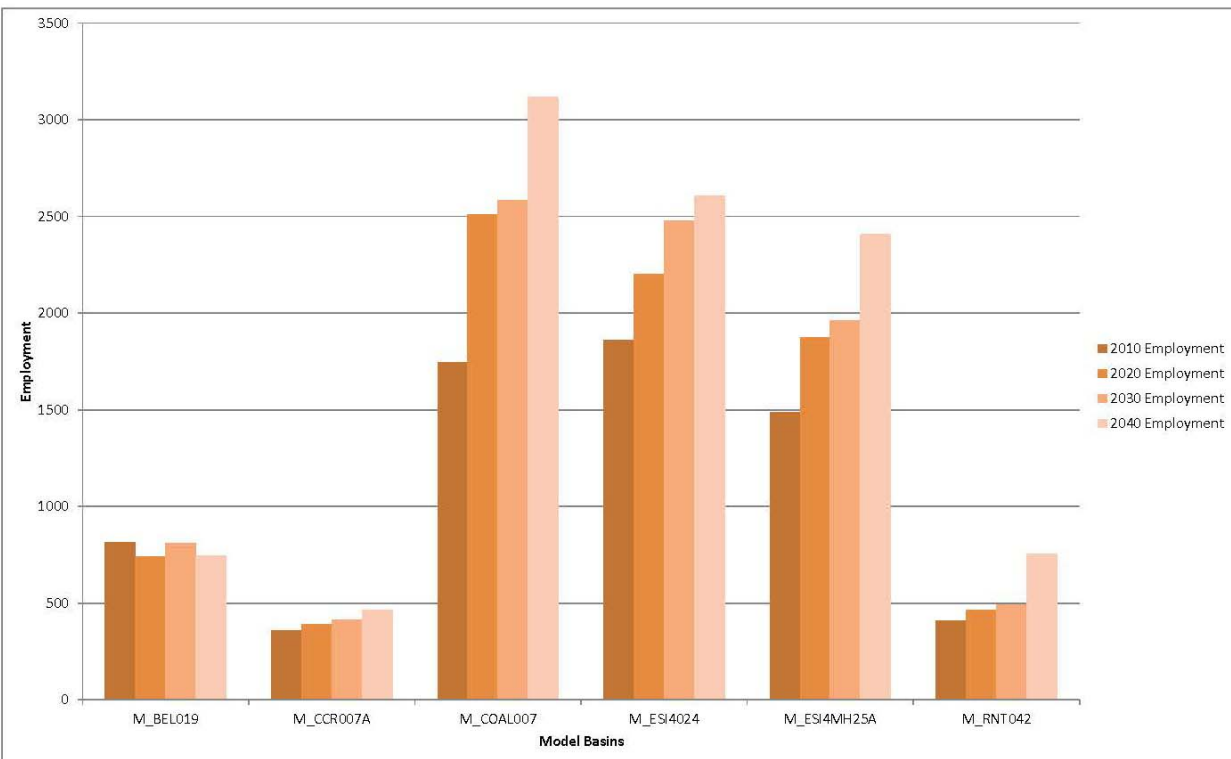
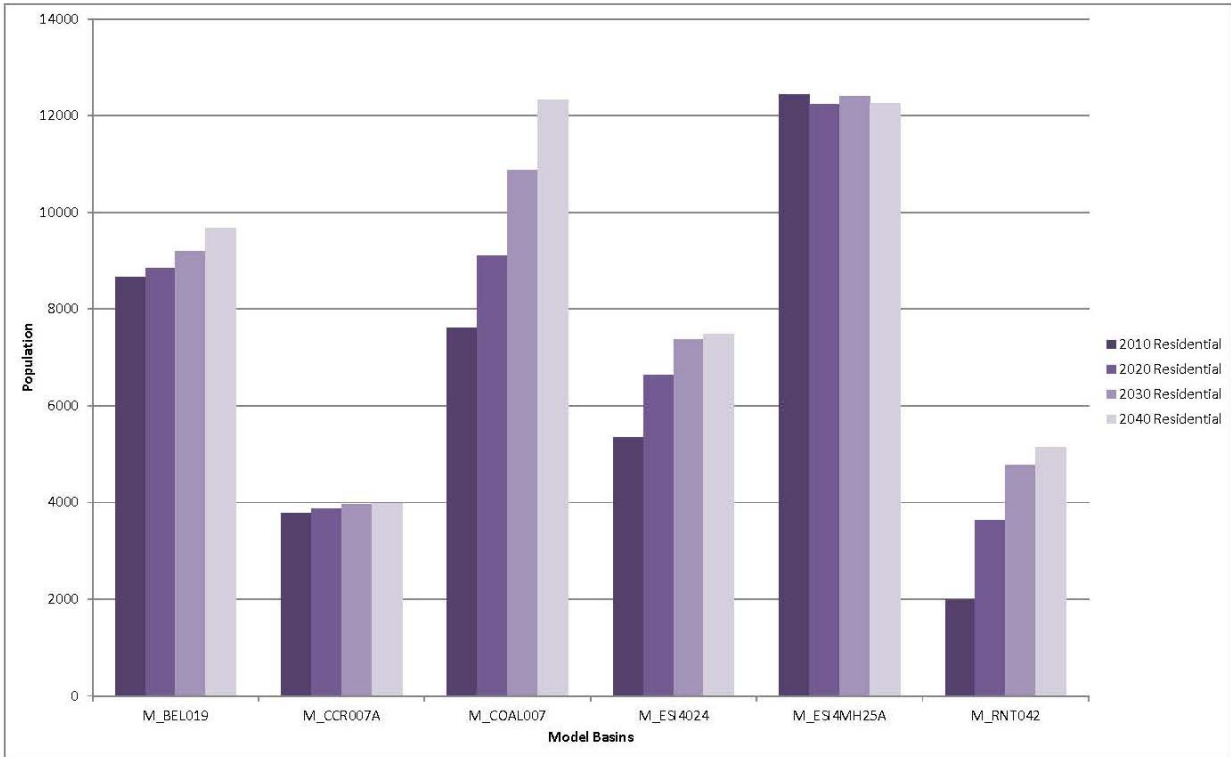
Employment

Model Basins	2010 Employment	2020 Employment	2030 Employment	2040 Employment
M_BEL091	86	95	93	102
M_BEL093	7	9	8	11
M_BEL094	27,611	33,967	47,147	62,085
M_BEL100	25,338	34,494	39,704	47,229
M_BELLE019	212	228	240	252
M_ENATA01A	6,273	7,611	7,822	8,442
M_ESI14058	4,842	6,148	6,457	6,614
M_ESI9032	9,952	12,257	14,344	14,172
M_FACT004	4,719	4,926	4,918	5,286
M_FACT024	14,287	15,330	15,509	15,963
M_HOLMS001A	2,242	3,134	3,448	3,908
M_KRK001	1,114	1,329	1,390	1,708
M_KRK004	1,741	2,322	2,691	3,241
M_KRK008	7,558	8,953	10,606	15,389
M_KRK010	1,737	2,389	2,390	2,387
M_KRK012	6,791	9,179	9,484	10,712
M_KRK015	1,970	2,862	3,019	3,275
M_LKHLS001	16,945	21,459	22,624	24,723
M_MEDNT001	1,258	1,471	1,510	1,786
M_NUD014	3,710	4,179	4,339	4,867
M_NUD029	11,162	13,819	14,437	18,526
M_NUD034	316	347	386	436
M_NUD75	2,606	2,853	2,933	3,237
M_RDM003	27,536	31,558	32,866	35,639
M_SAMVL110_W	358	425	426	574
M_VALEY070	5,836	7,764	8,677	8,667

SE Lake Washington Planning Area - Model Basins



SE Lake Washington Planning Area - Model Basin Population and Employment Forecasts Graphs



SE Lake Washington Planning Area - Model Basin Population and Employment Forecasts Data

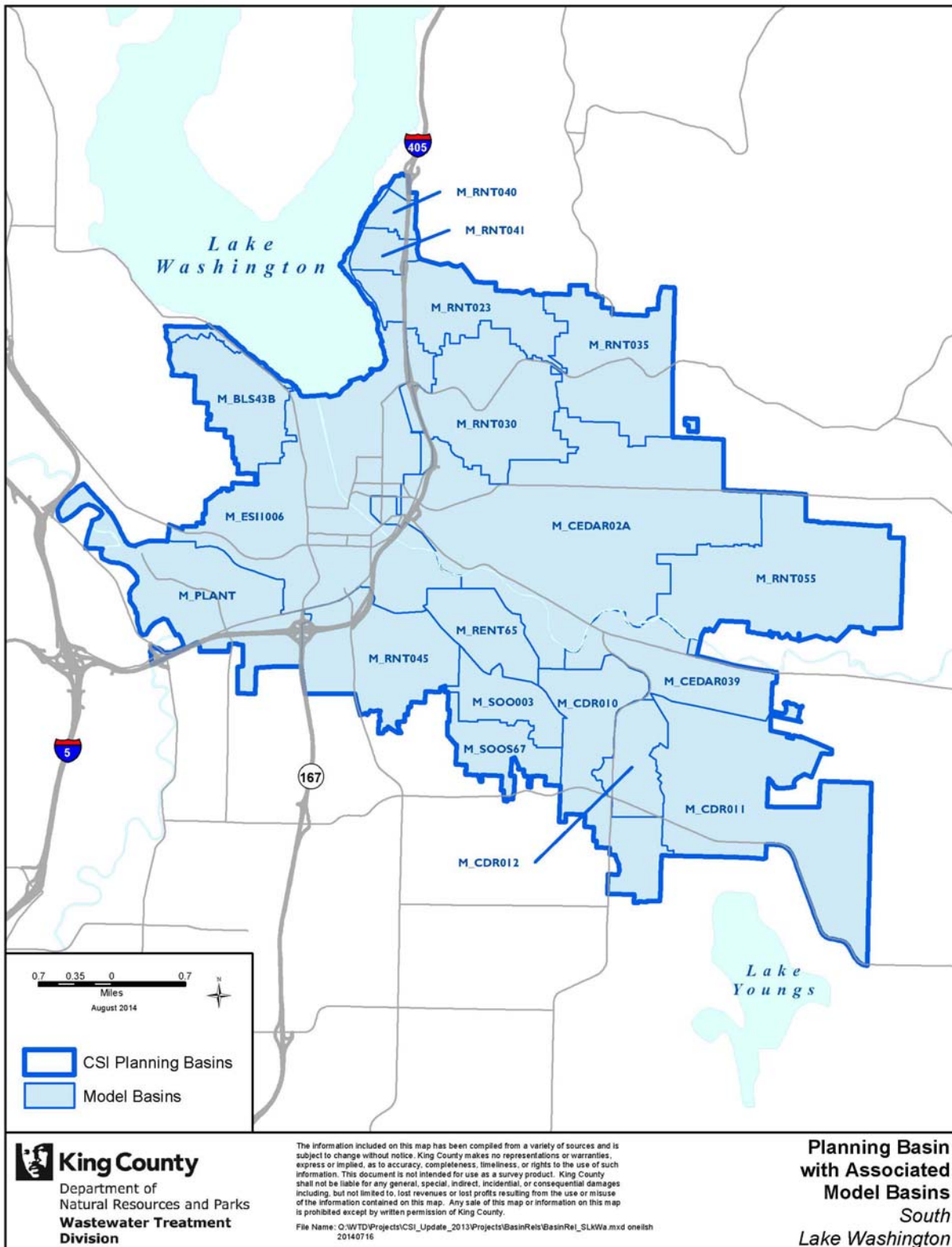
Sewered Population

Model Basins	2010 Residential	2020 Residential	2030 Residential	2040 Residential
M_BEL019	8,656	8,838	9,203	9,667
M_CCR007A	3,776	3,872	3,959	3,991
M_COAL007	7,615	9,102	10,868	12,321
M_ESI4024	5,350	6,642	7,365	7,483
M_ESI4MH25A	12,444	12,238	12,405	12,246
M_RNT042	1,993	3,630	4,770	5,146

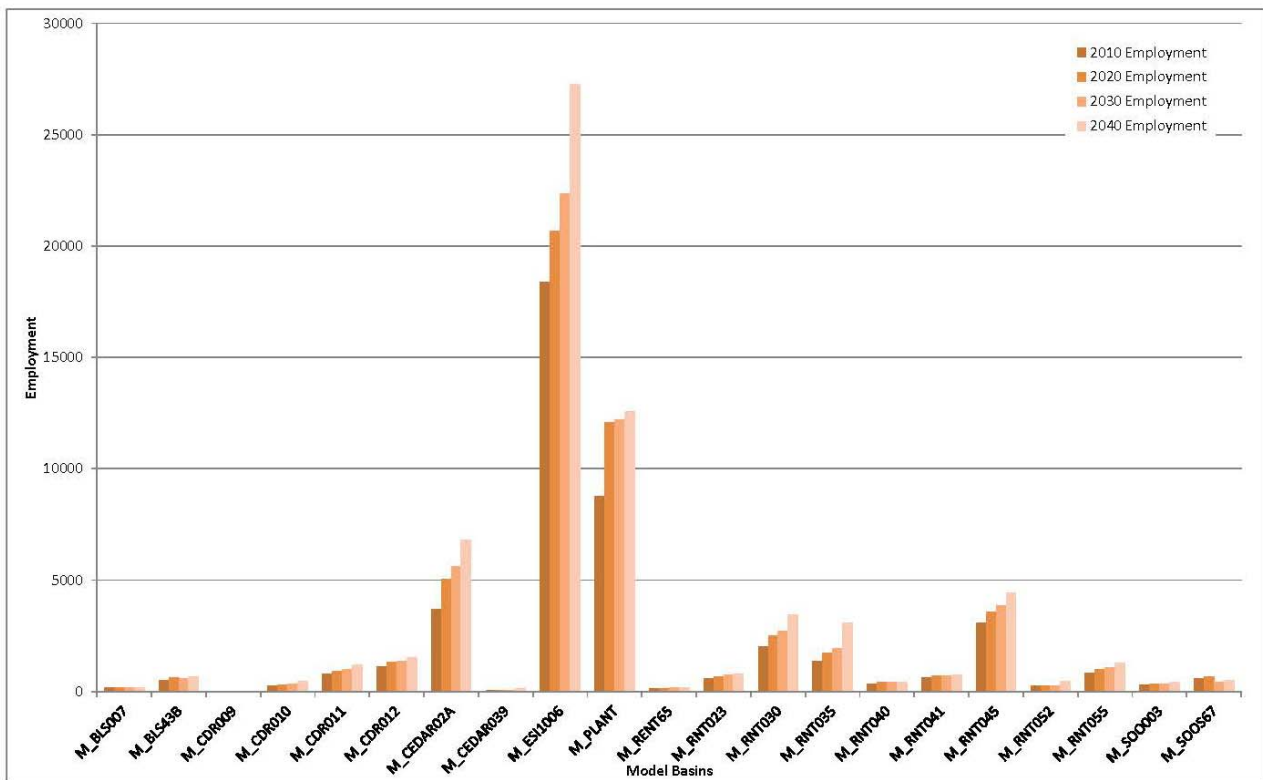
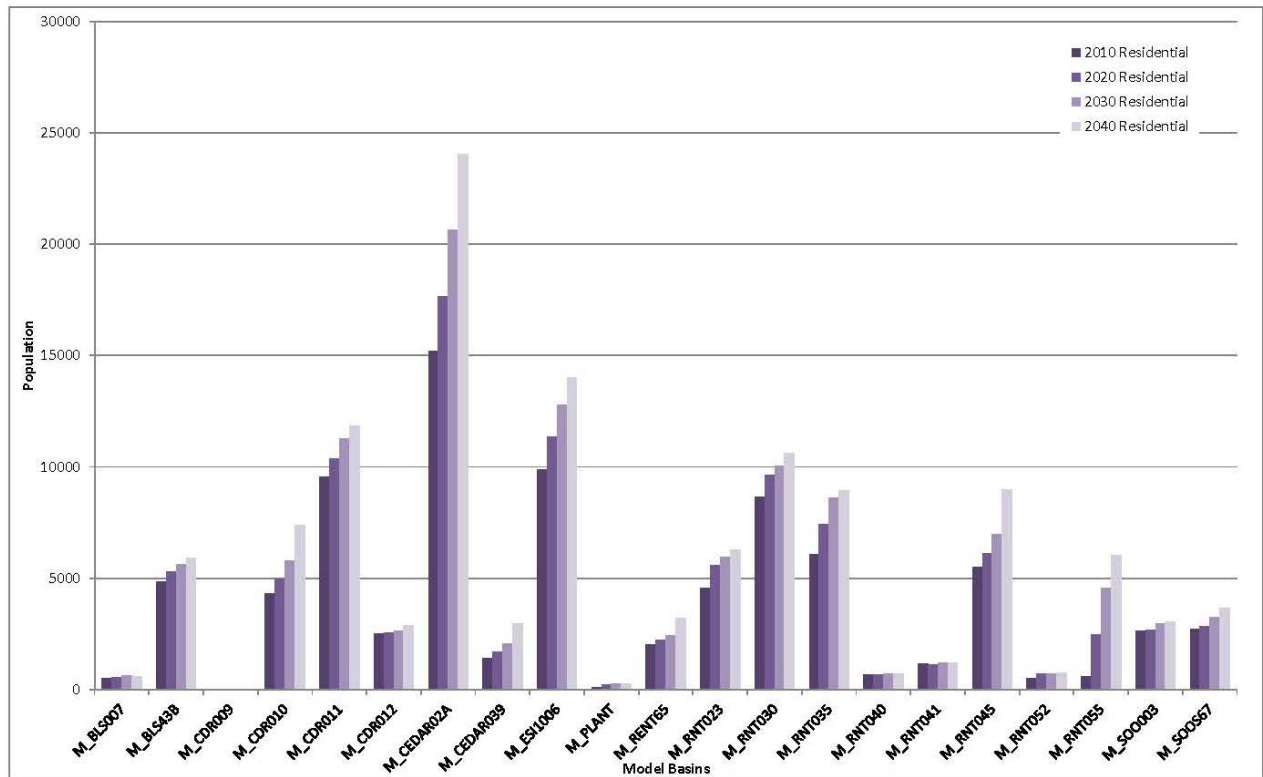
Employment

Model Basins	2010 Employment	2020 Employment	2030 Employment	2040 Employment
M_BEL019	815	741	809	745
M_CCR007A	358	392	416	463
M_COAL007	1,744	2,511	2,582	3,117
M_ESI4024	1,862	2,202	2,476	2,605
M_ESI4MH25A	1,487	1,874	1,961	2,410
M_RNT042	411	465	493	755

South Lake Washington Planning Area - Model Basins



South Lake Washington Planning Area - Model Basin Population and Employment Forecasts Graphs



South Lake Washington Planning Area - Model Basin Population and
Employment Forecasts Data

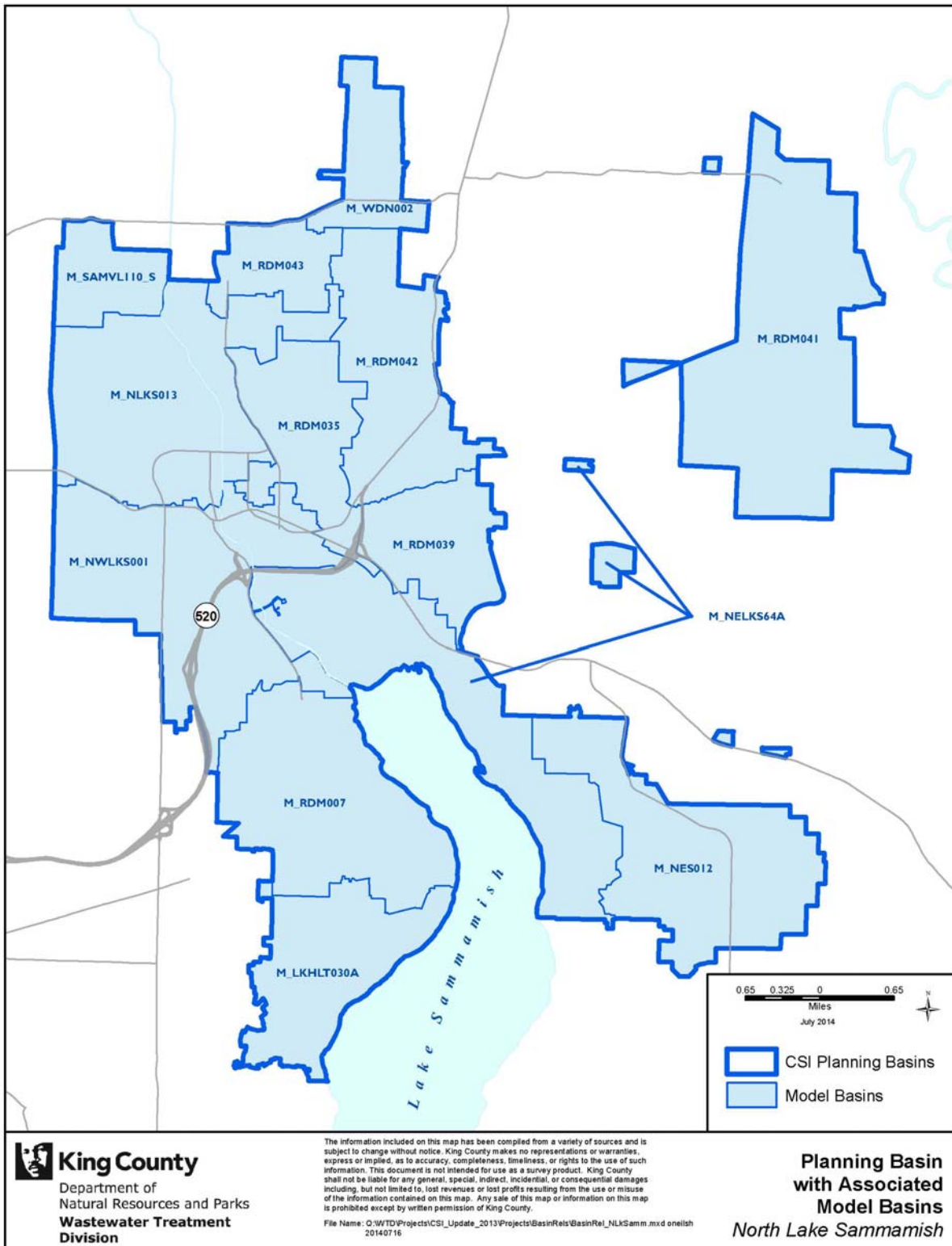
Sewered Population

Model Basins	2010 Residential	2020 Residential	2030 Residential	2040 Residential
M_BLS007	509	574	631	614
M_BLS43B	4,842	5,296	5,646	5,910
M_CDR009	-	7	10	22
M_CDR010	4,329	4,988	5,771	7,382
M_CDR011	9,555	10,362	11,274	11,841
M_CDR012	2,519	2,573	2,642	2,906
M_CEDAR02A	15,184	17,671	20,647	24,039
M_CEDAR039	1,422	1,709	2,071	2,965
M_ESI1006	9,865	11,374	12,769	14,018
M_PLANT	93	230	262	258
M_RENT65	2,033	2,219	2,432	3,229
M_RNT023	4,573	5,568	5,965	6,267
M_RNT030	8,661	9,627	10,028	10,627
M_RNT035	6,073	7,445	8,603	8,947
M_RNT040	684	683	729	732
M_RNT041	1,157	1,117	1,190	1,189
M_RNT045	5,513	6,134	6,962	8,996
M_RNT052	506	728	737	743
M_RNT055	598	2,472	4,564	6,052
M_SO0003	2,642	2,694	2,967	3,061
M_SO0S67	2,714	2,836	3,247	3,679

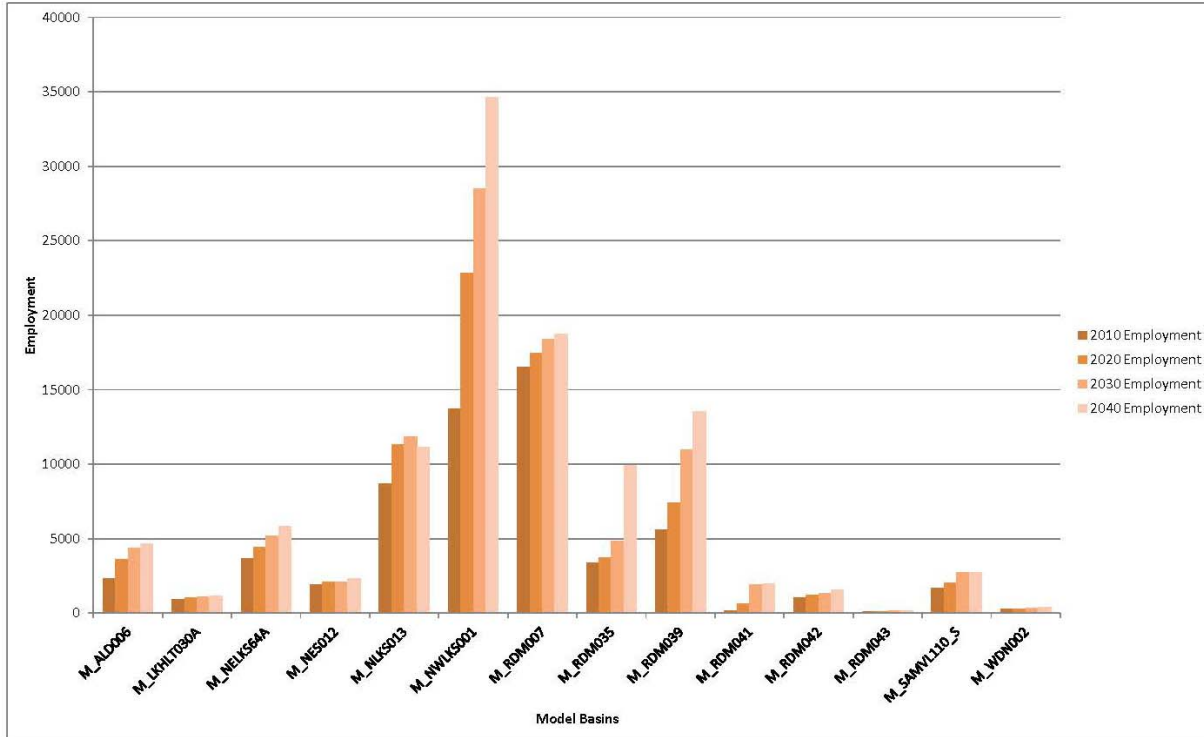
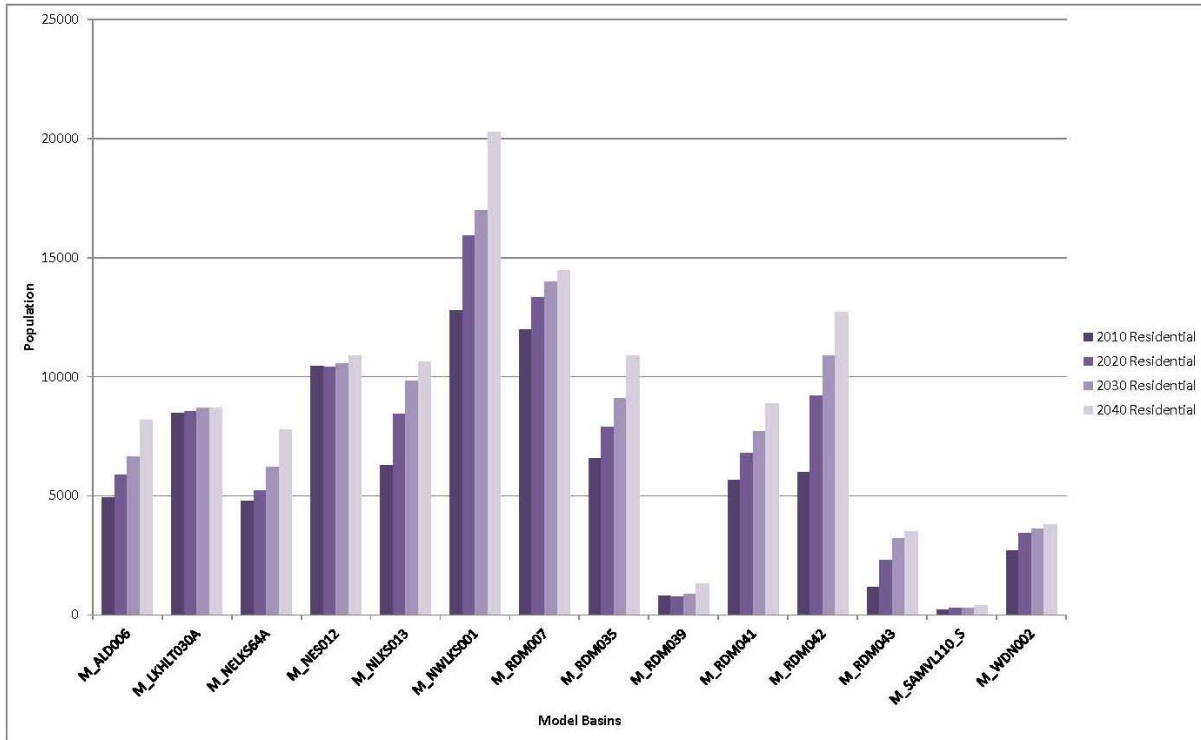
Employment

Model Basins	2010 Employment	2020 Employment	2030 Employment	2040 Employment
M_BLS007	171	192	187	190
M_BLS43B	489	610	605	653
M_CDR009	4	4	4	6
M_CDR010	261	297	341	461
M_CDR011	777	926	985	1,198
M_CDR012	1,113	1,320	1,369	1,508
M_CEDAR02A	3,702	5,040	5,606	6,813
M_CEDAR039	43	60	69	121
M_ESI1006	18,393	20,673	22,347	27,268
M_PLANT	8,770	12,088	12,210	12,585
M_RENT65	120	150	159	195
M_RNT023	582	686	728	789
M_RNT030	1,997	2,517	2,696	3,441
M_RNT035	1,348	1,747	1,946	3,090
M_RNT040	340	416	416	417
M_RNT041	625	724	724	752
M_RNT045	3,100	3,573	3,866	4,435
M_RNT052	241	274	273	474
M_RNT055	847	1,005	1,086	1,293
M_SO0003	284	333	352	404
M_SOOS67	585	648	433	487

North Lake Sammamish Planning Area - Model Basins



North Lake Sammamish Planning Area - Model Basin Population and Employment Forecasts Graphs



North Lake Sammamish Planning Area - Model Basin Population and Employment Forecasts Data

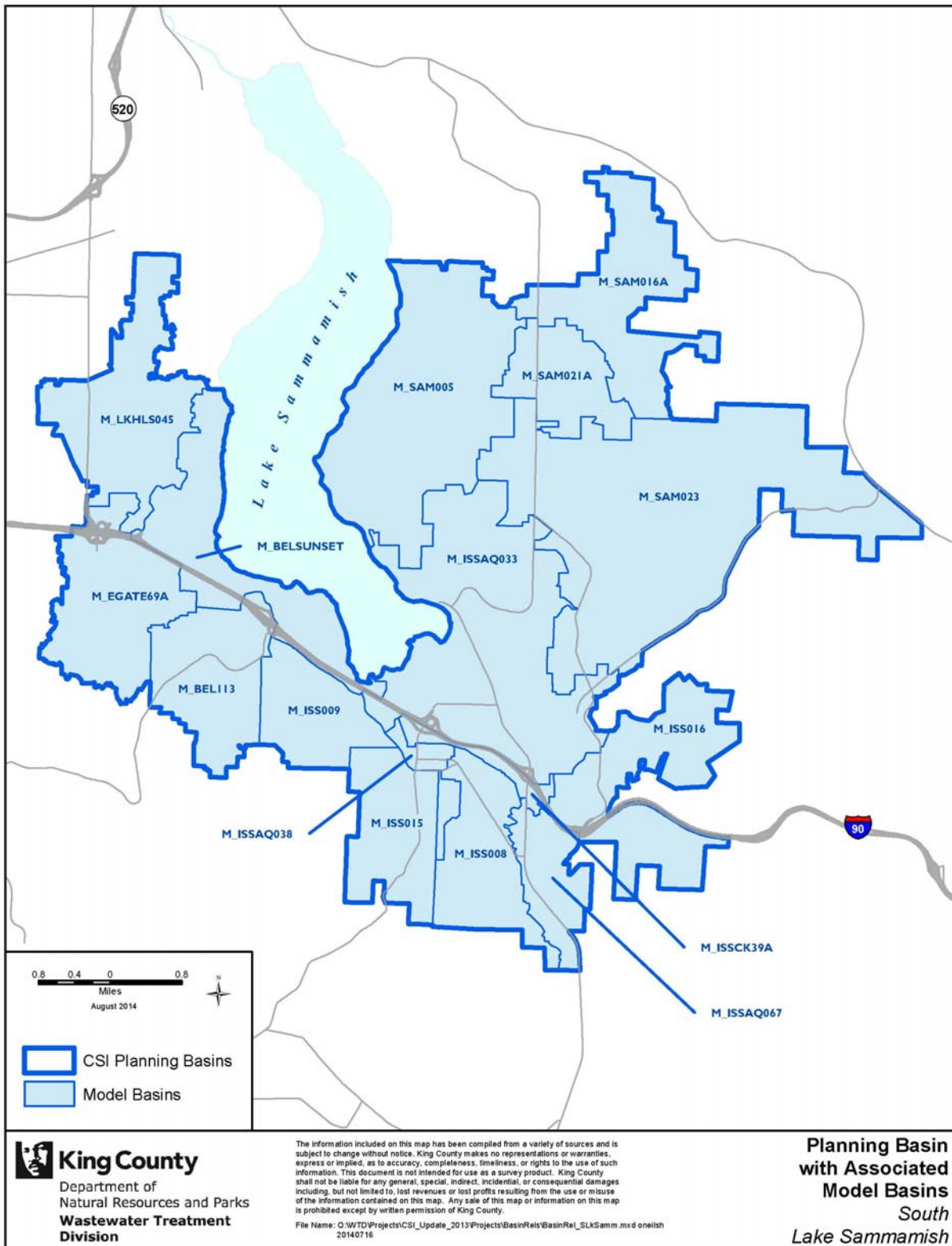
Sewered Population

Model Basins	2010 Residential	2020 Residential	2030 Residential	2040 Residential
M_LKHLT030A	8,484	8,526	8,702	8,702
M_NELKS64A	4,800	5,218	6,207	7,790
M_NES012	10,439	10,410	10,544	10,898
M_NLKS013	6,288	8,452	9,810	10,608
M_NWLKS001	12,778	15,902	16,991	20,266
M_RDM007	11,984	13,329	13,997	14,442
M_RDM035	6,564	7,875	9,096	10,888
M_RDM039	795	776	893	1,329
M_RDM041	5,662	6,783	7,689	8,861
M_RDM042	5,988	9,195	10,880	12,689
M_RDM043	1,179	2,289	3,228	3,499
M_SAMVL110_S	234	292	296	388
M_WDN002	2,686	3,419	3,621	3,782

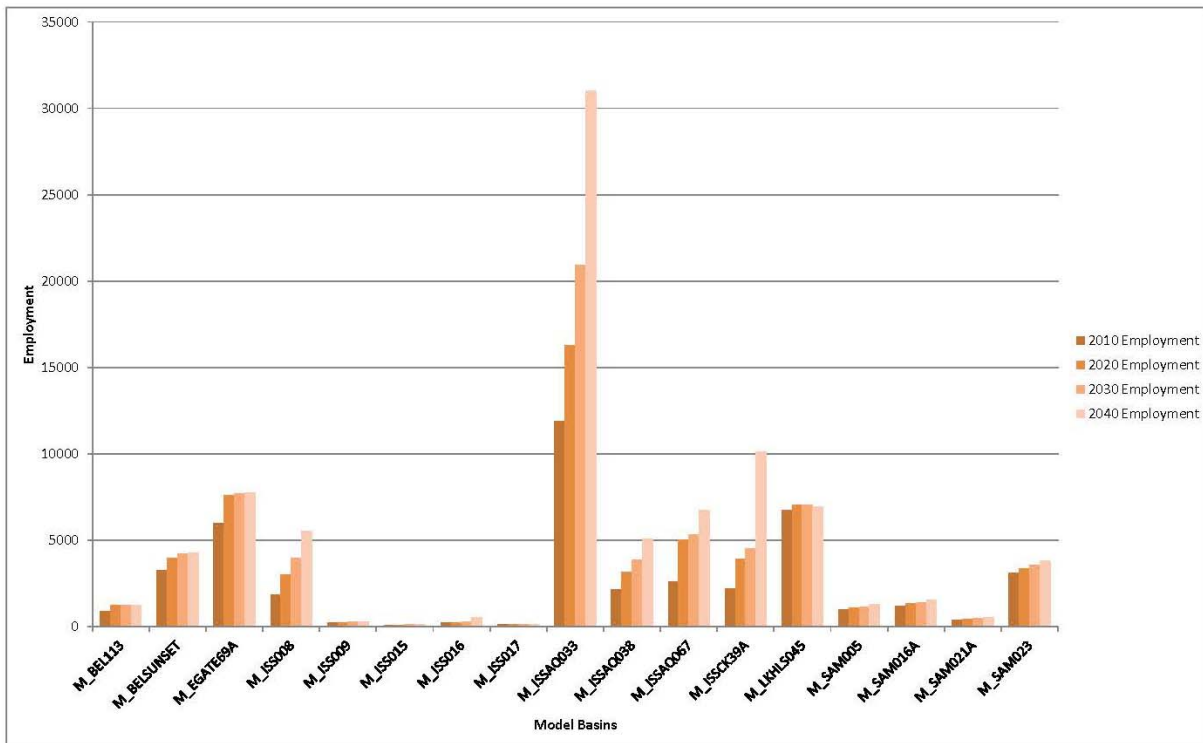
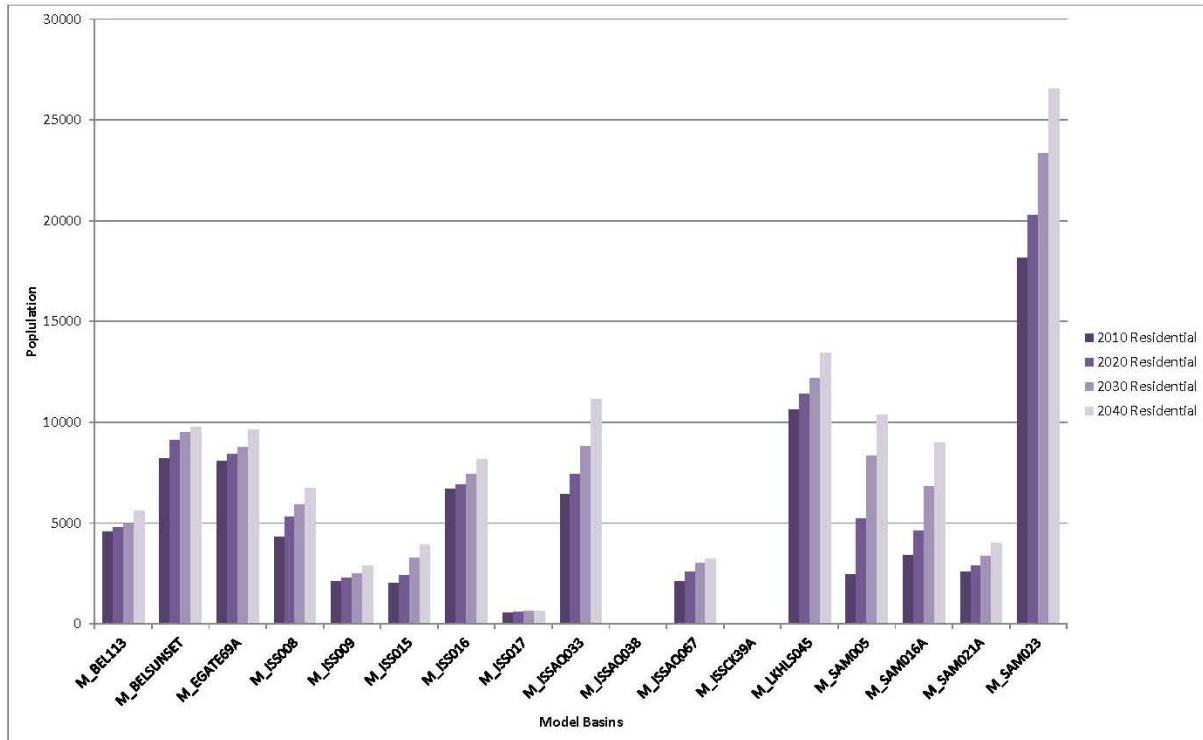
Employment

Model Basins	2010 Employment	2020 Employment	2030 Employment	2040 Employment
M_LKHLT030A	930	1,012	1,069	1,146
M_NELKS64A	3,691	4,414	5,173	5,845
M_NES012	1,919	2,083	2,083	2,310
M_NLKS013	8,667	11,300	11,820	11,120
M_NWLKS001	13,737	22,802	28,523	34,648
M_RDM007	16,503	17,430	18,378	18,737
M_RDM035	3,395	3,741	4,814	9,922
M_RDM039	5,621	7,431	10,979	13,551
M_RDM041	150	646	1,918	1,986
M_RDM042	1,059	1,205	1,305	1,570
M_RDM043	116	121	144	173
M_SAMVL110_S	1,691	2,060	2,708	2,711
M_WDN002	260	303	328	371

South Lake Sammamish Planning Area Model Basins



South Lake Sammamish Planning Area - Model Basin Population and Employment Forecasts Graphs



South Lake Sammamish Planning Area - Model Basin Population and Employment Forecasts Data

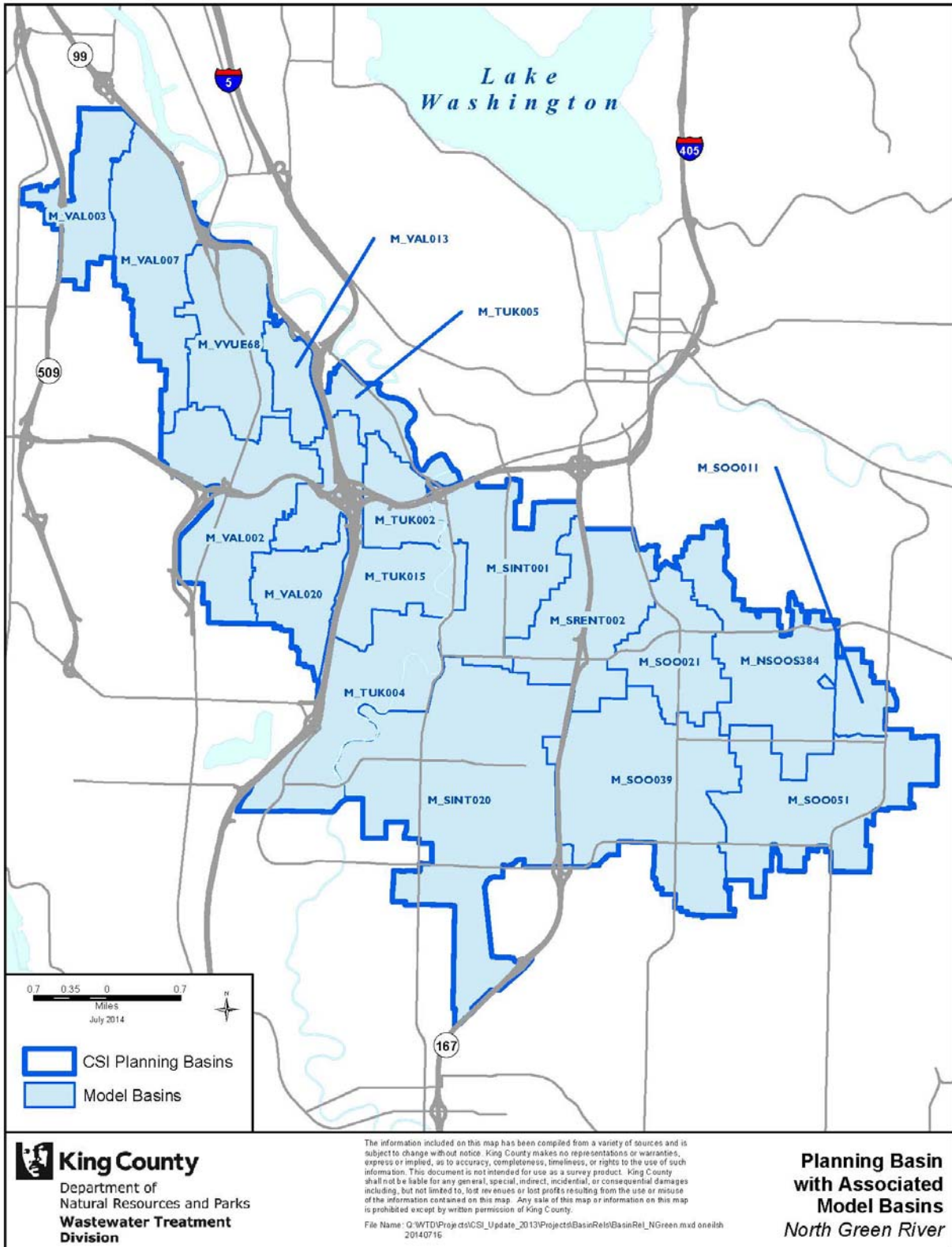
Sewered Population

Model Basins	2010 Residential	2020 Residential	2030 Residential	2040 Residential
M_BEL113	4,564	4,770	4,953	5,607
M_BELSUNSET	8,214	9,093	9,481	9,754
M_EGATE69A	8,089	8,407	8,754	9,635
M_ISS008	4,331	5,326	5,921	6,717
M_ISS009	2,119	2,272	2,473	2,905
M_ISS015	2,000	2,424	3,293	3,927
M_ISS016	6,672	6,893	7,417	8,153
M_ISS017	537	596	618	627
M_ISSAQ033	6,411	7,423	8,824	11,134
M_ISSAQ038	-	1	1	2
M_ISSAQ067	2,112	2,591	3,004	3,233
M_ISSCK39A	33	39	41	42
M_LKHL045	10,607	11,417	12,176	13,421
M_SAM005	2,452	5,207	8,319	10,347
M_SAM016A	3,386	4,632	6,809	8,986
M_SAM021A	2,585	2,868	3,349	4,018
M_SAM023	18,154	20,293	23,340	26,546

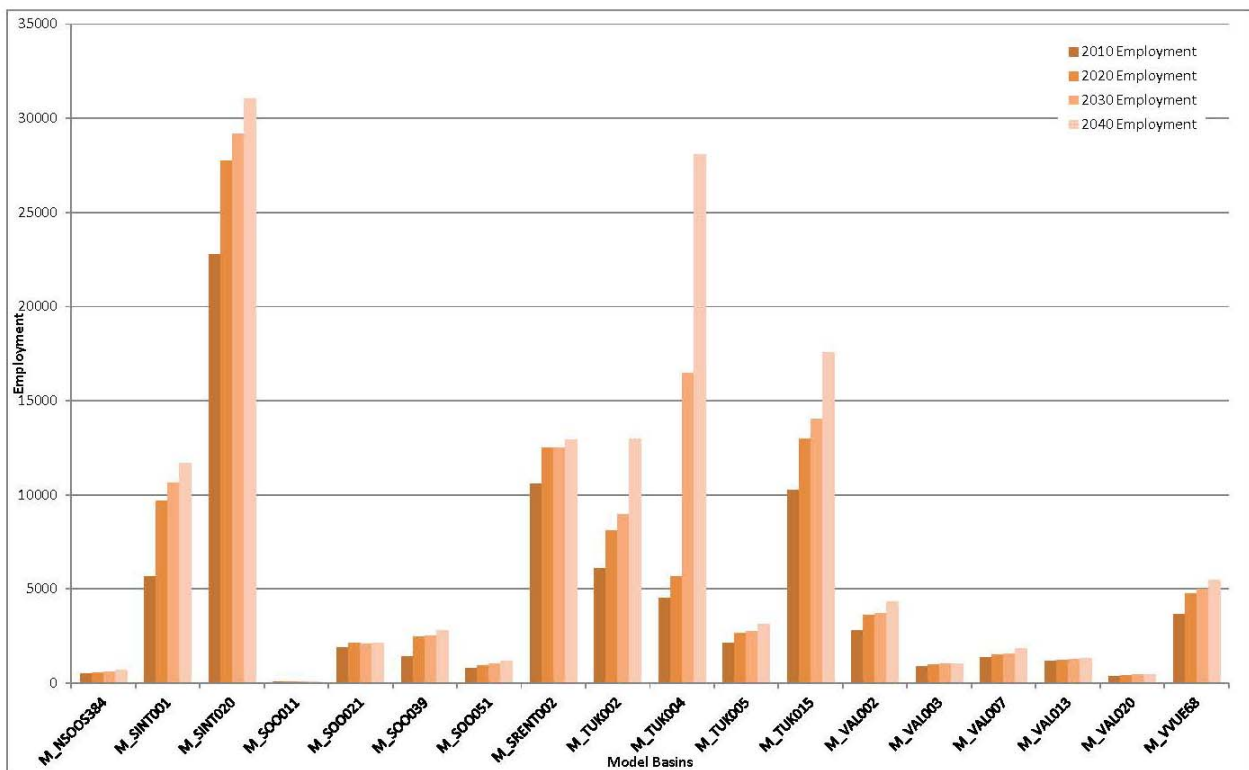
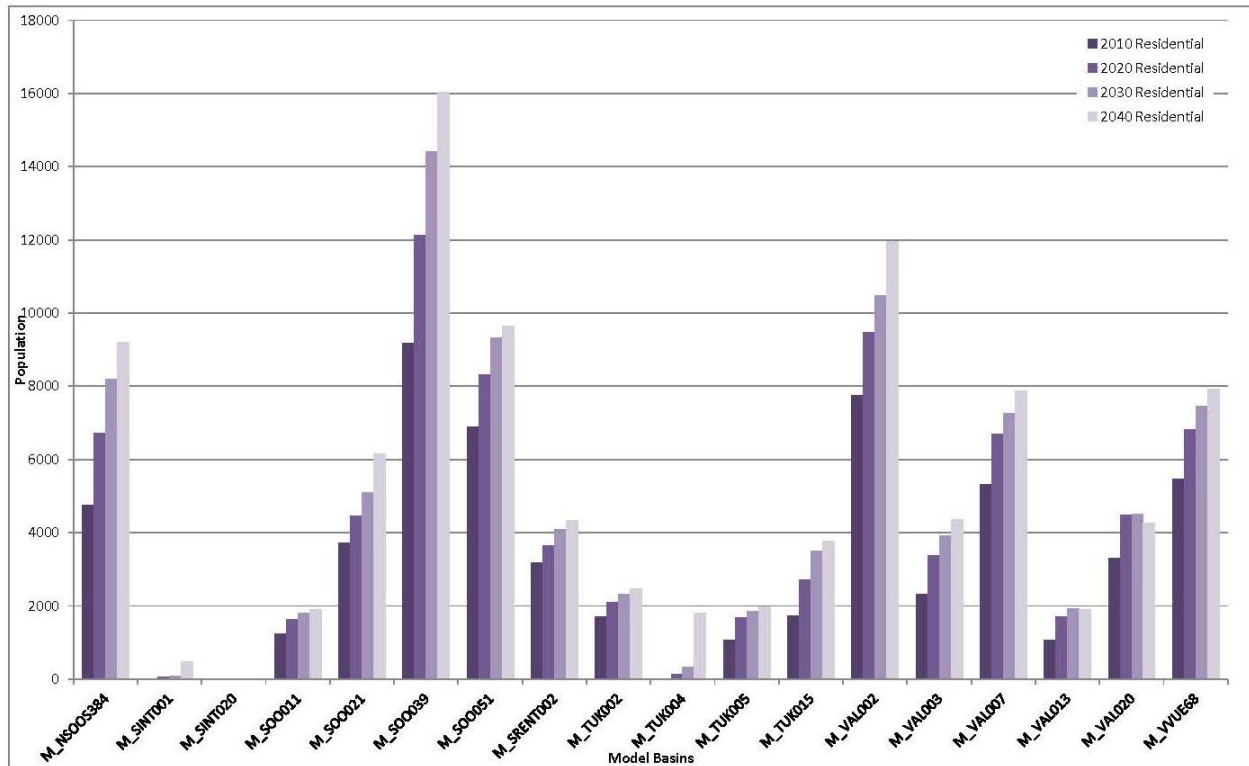
Employment

Model Basins	2010 Employment	2020 Employment	2030 Employment	2040 Employment
M_BEL113	911	1,220	1,258	1,249
M_BELSUNSET	3,284	3,942	4,216	4,274
M_EGATE69A	5,997	7,594	7,695	7,727
M_ISS008	1,846	3,026	3,975	5,536
M_ISS009	233	255	270	302
M_ISS015	58	101	117	153
M_ISS016	228	243	273	511
M_ISS017	114	117	117	122
M_ISSAQ033	11,889	16,266	20,900	31,000
M_ISSAQ038	2,135	3,152	3,872	5,053
M_ISSAQ067	2,603	5,024	5,346	6,719
M_ISSCK39A	2,190	3,896	4,525	10,139
M_LKHL045	6,737	7,069	7,063	6,954
M_SAM005	1,003	1,090	1,132	1,308
M_SAM016A	1,213	1,346	1,415	1,533
M_SAM021A	374	414	465	534
M_SAM023	3,103	3,360	3,542	3,806

North Green River Planning Area - Model Basins



North Green River Planning Area - Model Basin Population and Employment Forecasts Graphs



North Green River Planning Area - Model Basin Population and
Employment Forecasts Data

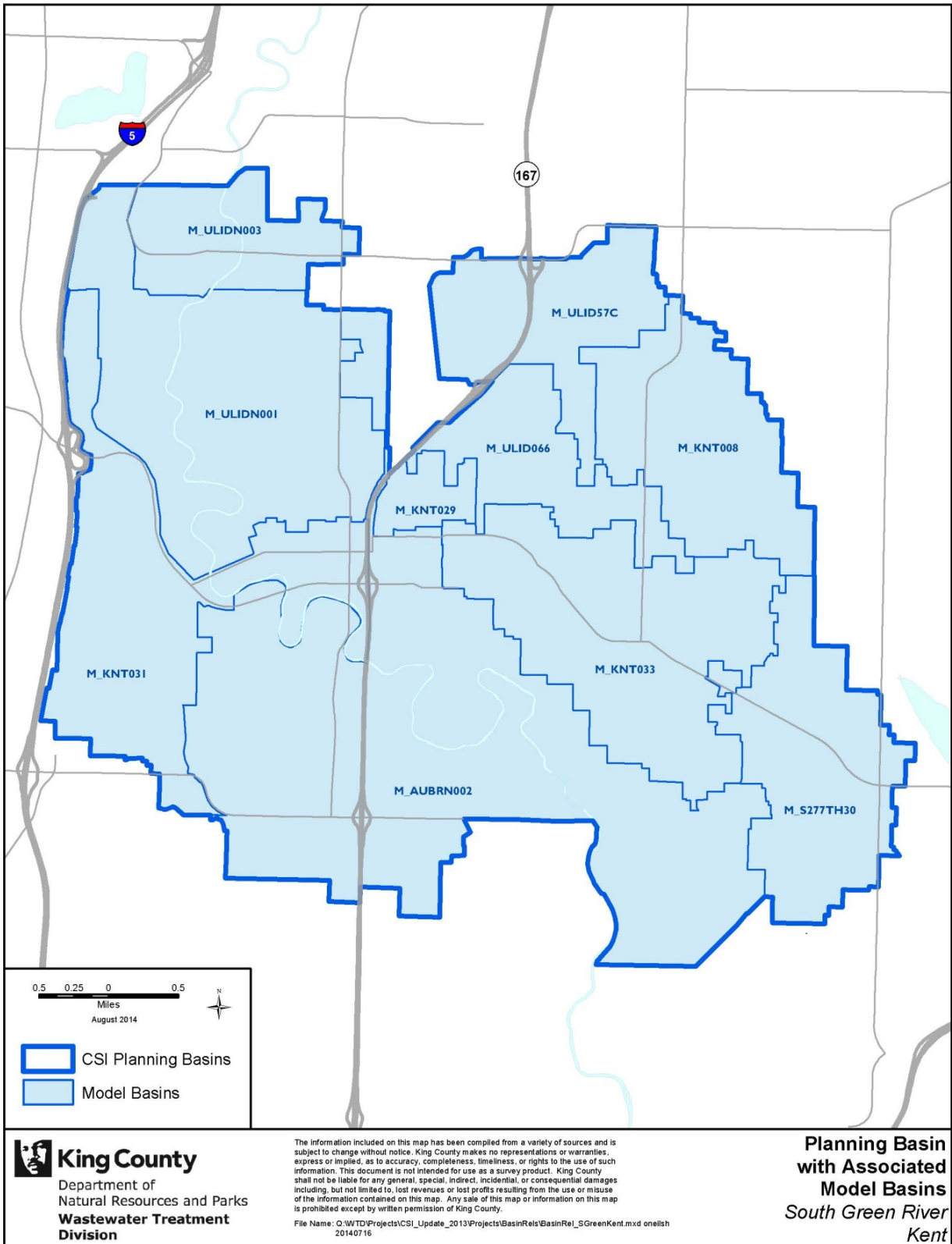
Sewered Population

Model Basins	2010 Residential	2020 Residential	2030 Residential	2040 Residential
M_BLS013	4,894	7,559	8,382	9,842
M_NS00S384	4,746	6,712	8,203	9,212
M_SINT001	3	71	88	480
M_SINT020	12	21	4	-
M_S00011	1,239	1,629	1,811	1,896
M_S00021	3,723	4,450	5,094	6,163
M_S00039	9,187	12,118	14,411	16,042
M_S00051	6,890	8,327	9,315	9,640
M_SRENT002	3,171	3,659	4,083	4,345
M_TUK002	1,710	2,102	2,333	2,480
M_TUK004	-	130	341	1,803
M_TUK005	1,076	1,689	1,845	1,983
M_TUK015	1,738	2,720	3,491	3,763
M_VAL002	7,752	9,468	10,481	11,964
M_VAL003	2,321	3,388	3,925	4,364
M_VAL007	5,309	6,687	7,259	7,888
M_VAL013	1,067	1,720	1,919	1,917
M_VAL020	3,312	4,478	4,519	4,271
M_VVUE68	5,477	6,829	7,457	7,936

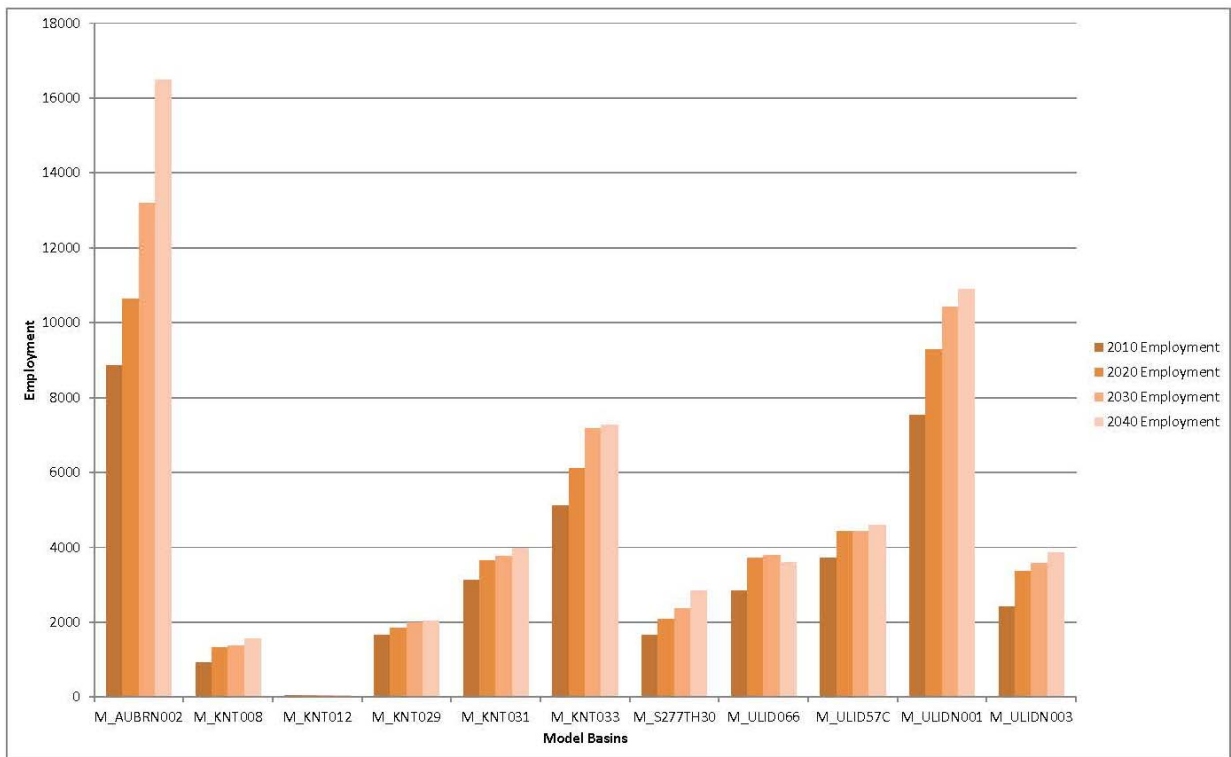
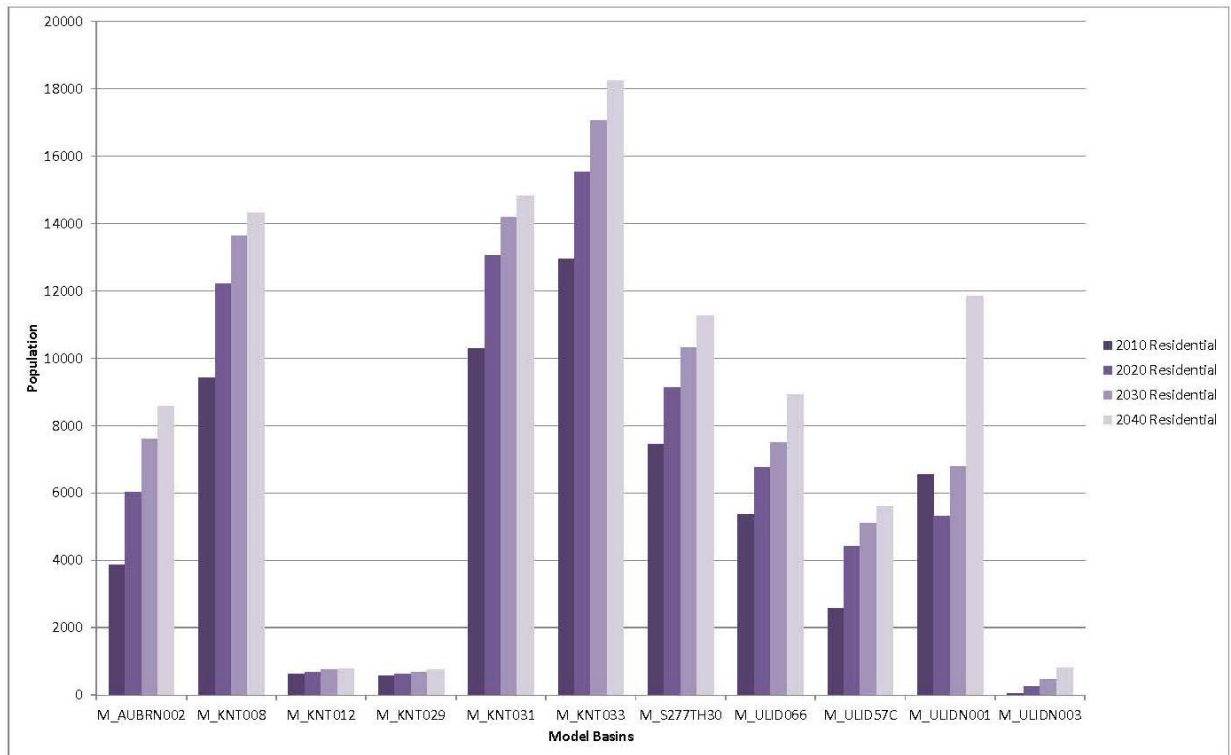
Employment

Model Basins	2010 Employment	2020 Employment	2030 Employment	2040 Employment
M_BLS013	827	1,151	1,287	1,569
M_NS00S384	493	551	602	714
M_SINT001	5,682	9,685	10,648	11,707
M_SINT020	22,792	27,739	29,198	31,038
M_S00011	64	76	83	100
M_S00021	1,903	2,112	2,079	2,137
M_S00039	1,402	2,451	2,509	2,811
M_S00051	809	940	1,030	1,198
M_SRENT002	10,598	12,487	12,501	12,930
M_TUK002	6,103	8,124	8,944	12,964
M_TUK004	4,525	5,663	16,485	28,096
M_TUK005	2,108	2,670	2,770	3,117
M_TUK015	10,277	12,994	14,047	17,544
M_VAL002	2,786	3,617	3,695	4,319
M_VAL003	903	986	1,012	1,027
M_VAL007	1,377	1,526	1,535	1,850
M_VAL013	1,190	1,235	1,263	1,311
M_VAL020	374	431	440	479
M_VVUE68	3,678	4,770	5,019	5,468

South Green River/Kent Planning Area - Model Basins



South Green River/Kent Planning Area - Model Basin Population and Employment Forecasts Graphs



South Green River/Kent Planning Area - Model Basin Population and Employment Forecasts Data

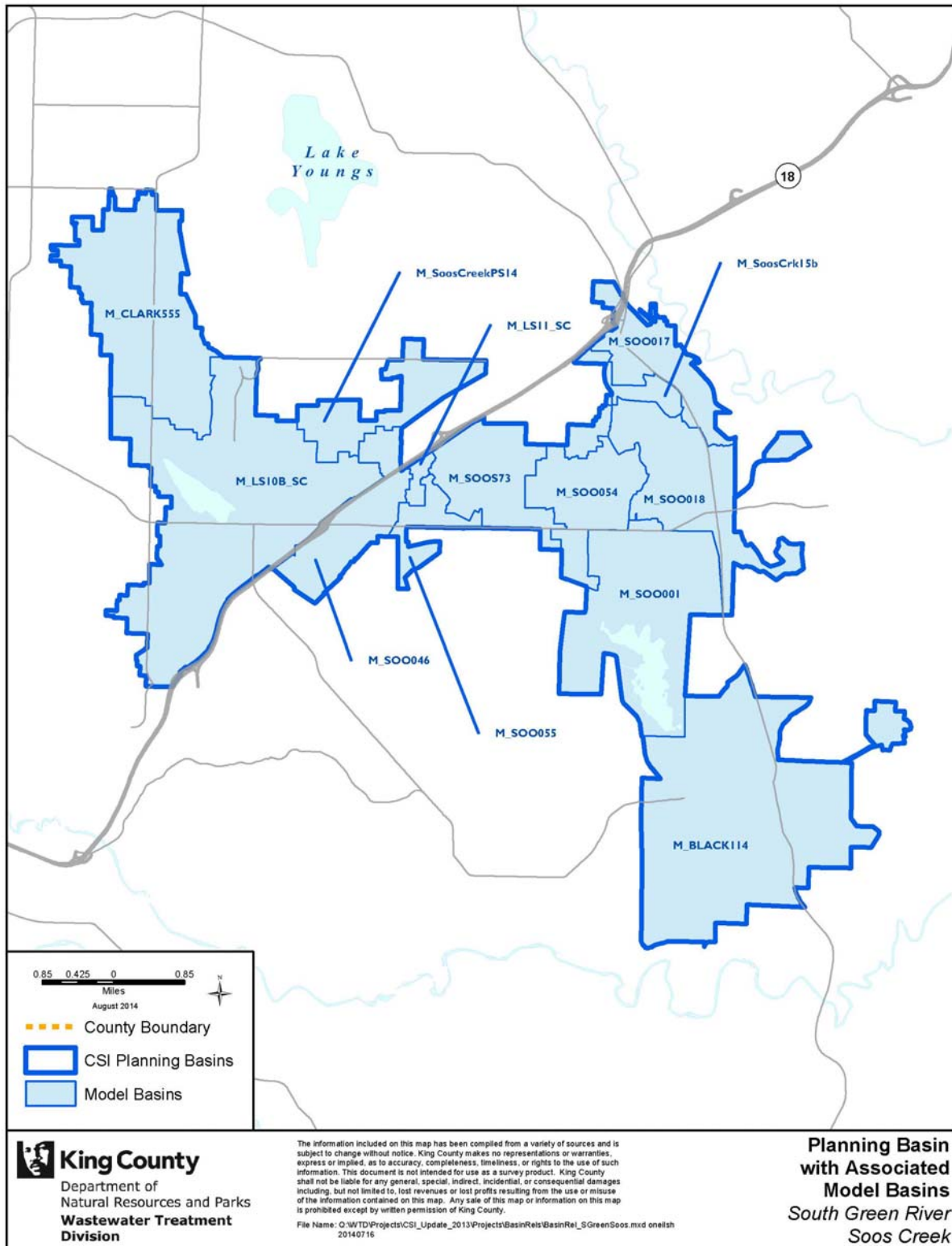
Sewered Population

Model Basins	2010 Residential	2020 Residential	2030 Residential	2040 Residential
M_AUBRN002	3,880	6,032	7,610	8,576
M_KNT008	9,435	12,211	13,622	14,306
M_KNT012	628	691	768	791
M_KNT029	587	636	672	775
M_KNT031	10,303	13,060	14,181	14,827
M_KNT033	12,961	15,532	17,051	18,232
M_S277TH30	7,438	9,143	10,322	11,259
M_ULID066	5,376	6,755	7,489	8,921
M_ULID57C	2,571	4,411	5,097	5,599
M_ULIDN001	6,559	5,324	6,796	11,834
M_ULIDN003	49	272	479	821

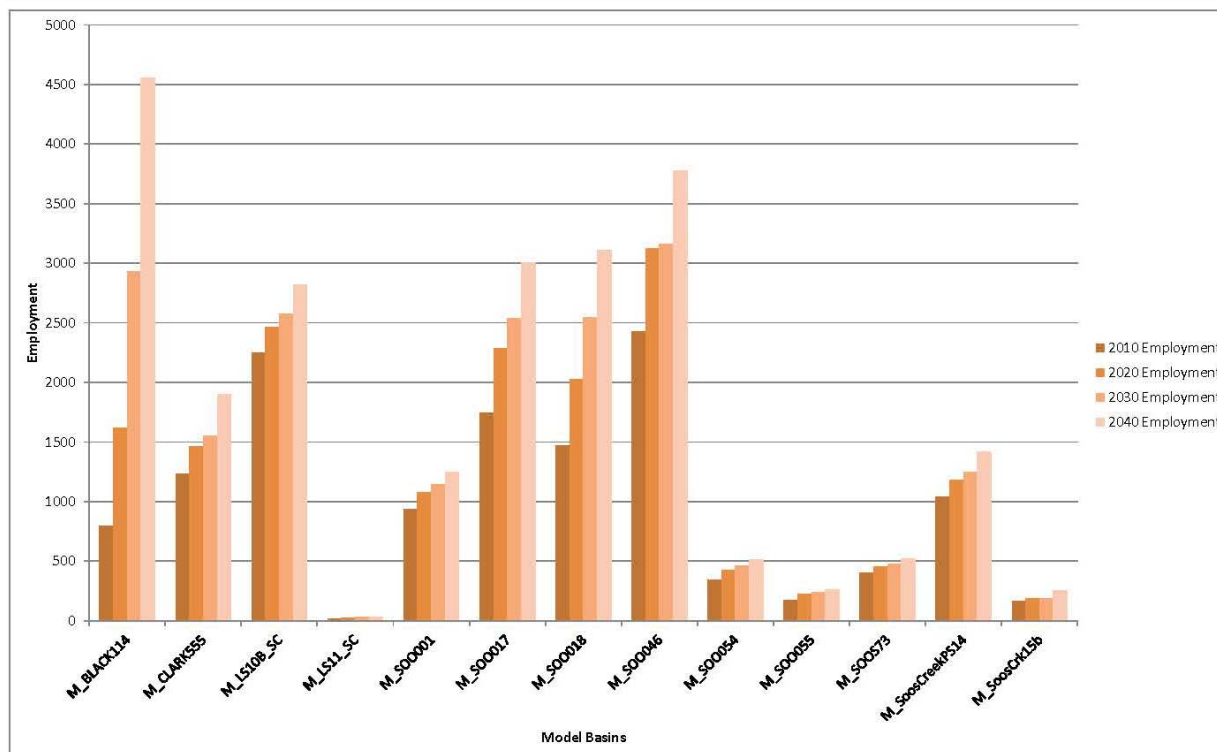
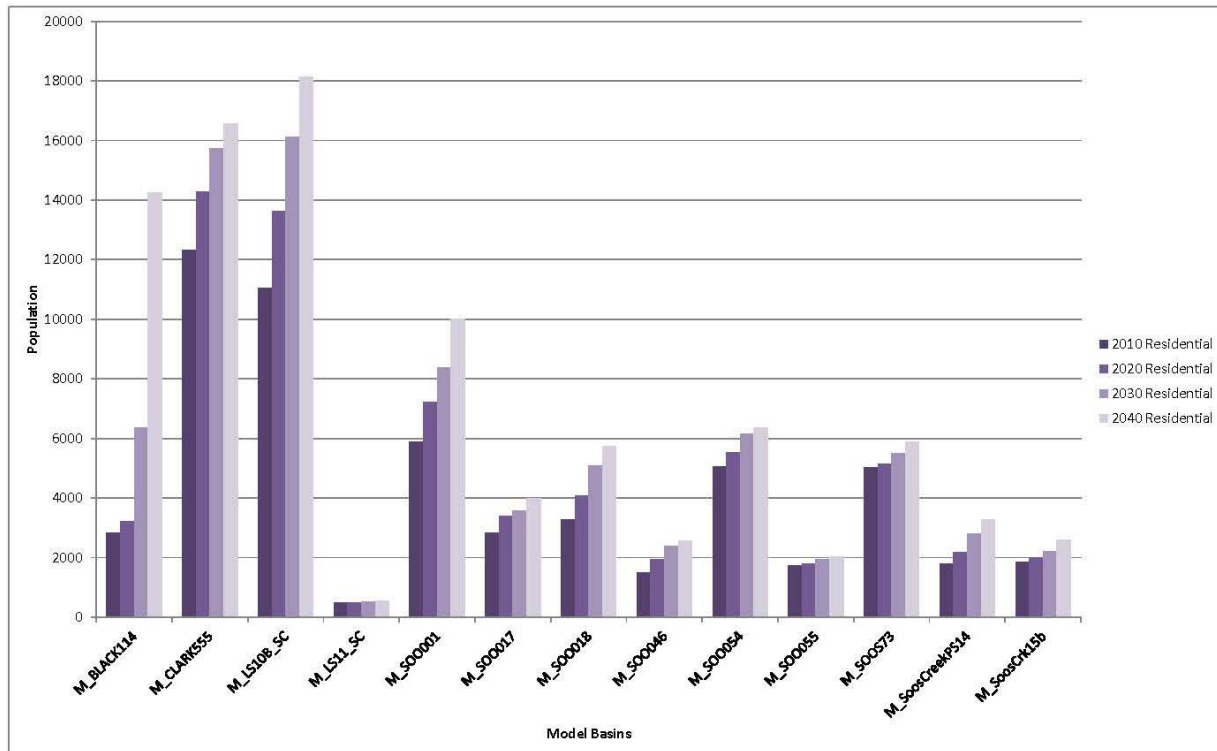
Employment

Model Basins	2010 Employment	2020 Employment	2030 Employment	2040 Employment
M_AUBRN002	8,857	10,637	13,203	16,476
M_KNT008	924	1,313	1,382	1,555
M_KNT012	45	48	50	55
M_KNT029	1,657	1,843	1,993	2,041
M_KNT031	3,128	3,637	3,755	3,982
M_KNT033	5,125	6,098	7,173	7,280
M_S277TH30	1,653	2,079	2,364	2,838
M_ULID066	2,843	3,708	3,778	3,588
M_ULID57C	3,725	4,416	4,433	4,588
M_ULIDN001	7,533	9,275	10,431	10,889
M_ULIDN003	2,407	3,363	3,564	3,866

South Green River/Soos Planning Area - Model Basins



South Green River/Soos Planning Area - Model Basin Population and Employment Forecasts Graphs



South Green River/Soos Planning Area - Model Basin Population and Employment Forecasts Data

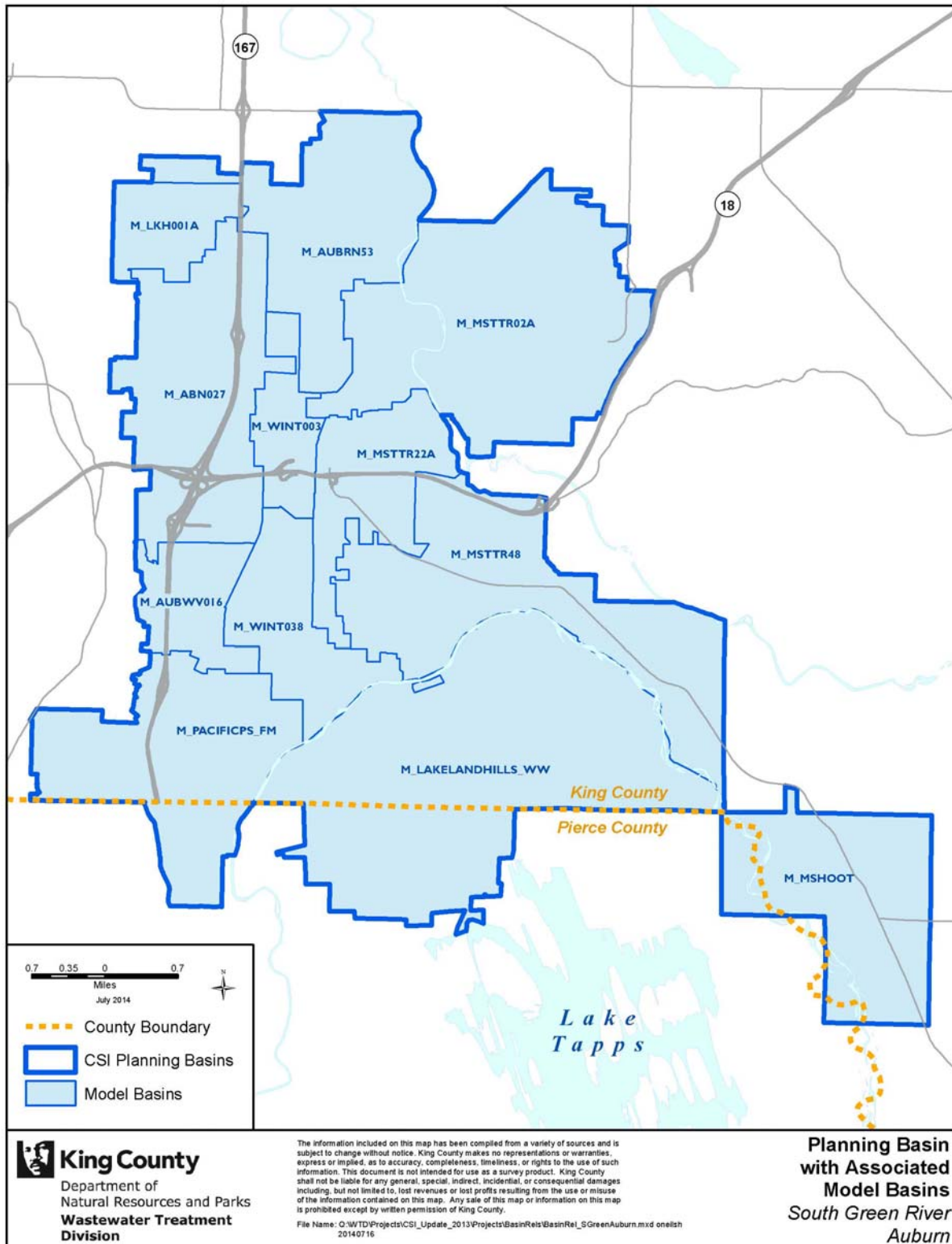
Sewered Population

Model Basins	2010 Residential	2020 Residential	2030 Residential	2040 Residential
M_BLACK114	2,825	3,212	6,362	14,241
M_CLARK555	12,337	14,276	15,725	16,559
M_LS10B_SC	11,036	13,617	16,122	18,126
M_LS11_SC	492	490	533	543
M_SOO001	5,881	7,209	8,382	10,005
M_SOO017	2,847	3,384	3,570	3,992
M_SOO018	3,284	4,088	5,101	5,741
M_SOO046	1,512	1,957	2,383	2,578
M_SOO054	5,057	5,525	6,166	6,376
M_SOO055	1,735	1,786	1,951	2,033
M_SOOS73	5,042	5,160	5,505	5,898
M_SoosCreekPS14	1,793	2,170	2,803	3,273
M_SoosCrk15b	1,855	2,010	2,220	2,595

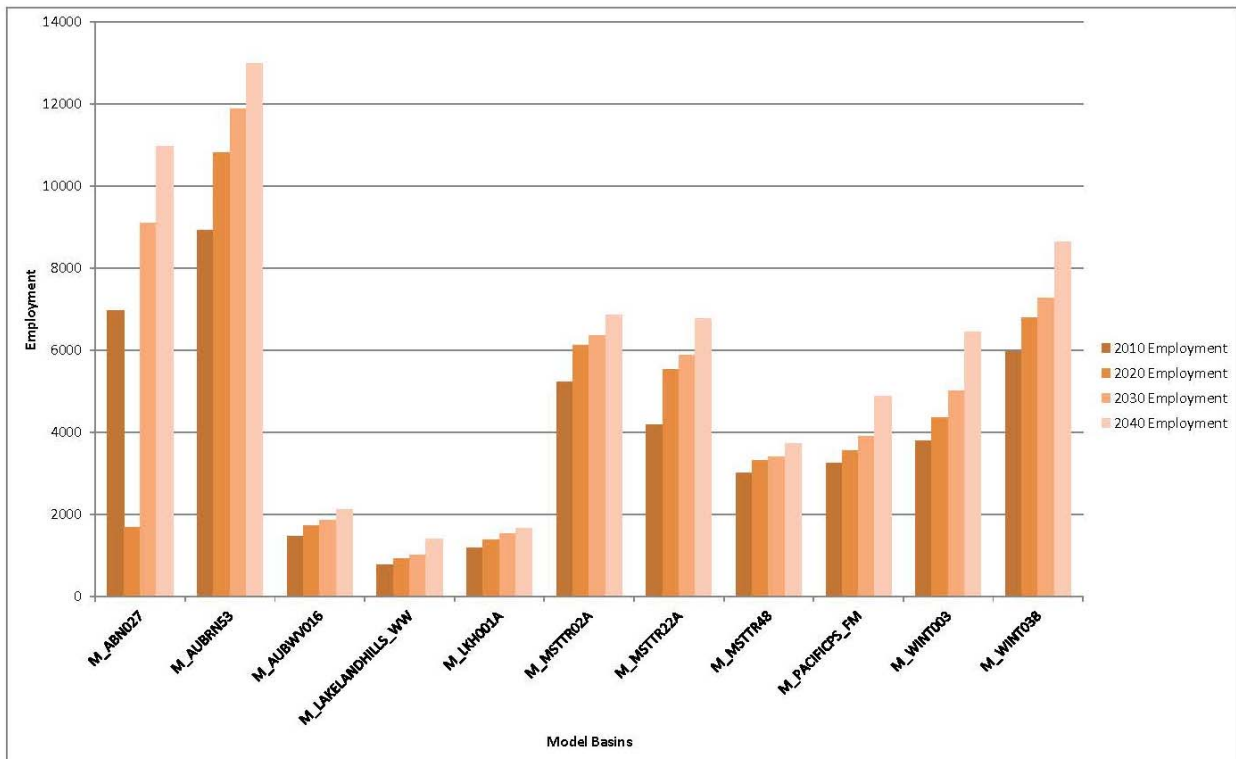
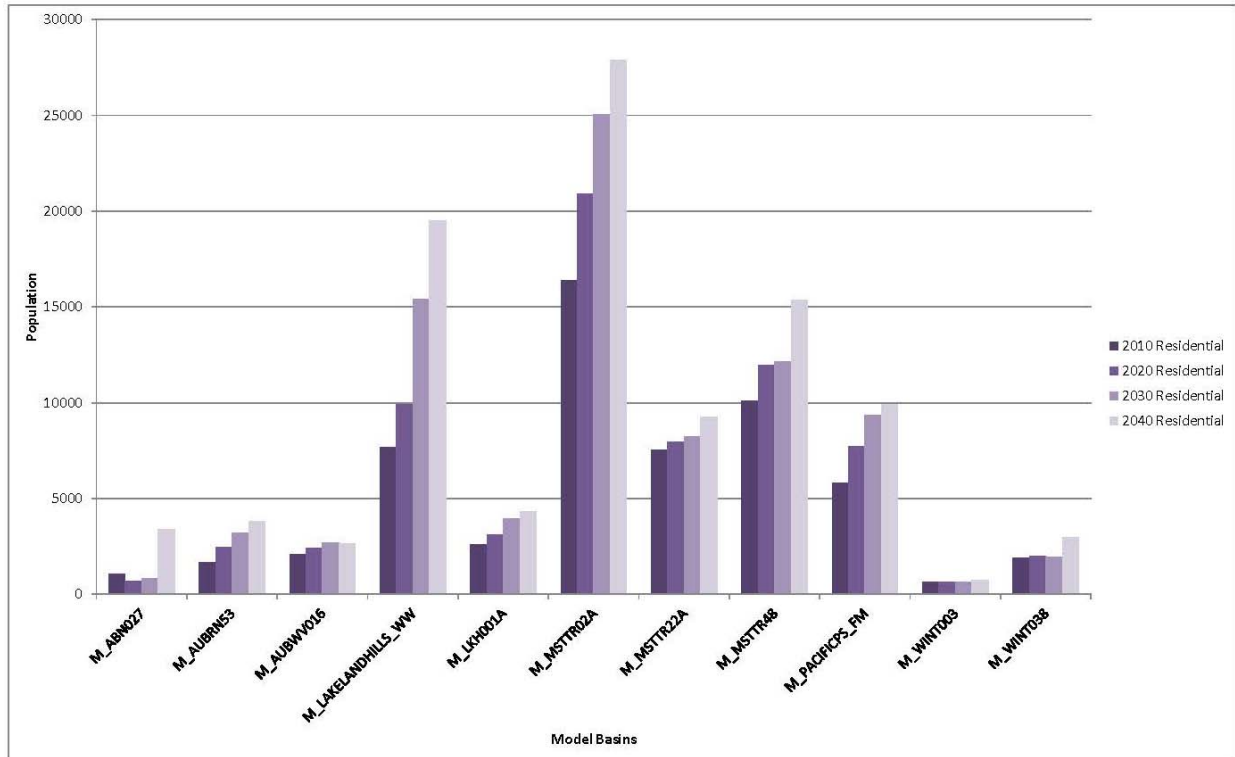
Employment

Model Basins	2010 Employment	2020 Employment	2030 Employment	2040 Employment
M_BLACK114	794	1,621	2,933	4,555
M_CLARK555	1,233	1,466	1,555	1,897
M_LS10B_SC	2,249	2,464	2,578	2,821
M_LS11_SC	18	25	29	31
M_SOO001	938	1,081	1,145	1,248
M_SOO017	1,745	2,288	2,540	3,004
M_SOO018	1,473	2,028	2,543	3,107
M_SOO046	2,428	3,122	3,159	3,778
M_SOO054	346	427	464	517
M_SOO055	176	226	240	260
M_SOOS73	400	452	477	519
M_SoosCreekPS14	1,041	1,179	1,248	1,415
M_SoosCrk15b	163	188	191	255

South Green River/Auburn Planning Area - Model Basins



South Green River/Auburn Planning Area - Model Basin Population and Employment Forecasts Graphs



South Green River/Auburn Planning Area - Model Basin Population and Employment Forecasts Data

Model Basins	2010 Residential	2020 Residential	2030 Residential	2040 Residential
M_ABNO27	1,087	714	812	3,400
M_AUBRN53	1,663	2,481	3,231	3,823
M_AUBWV016	2,079	2,421	2,714	2,655
M_LAKELANDHILLS_WW	7,658	9,912	15,417	19,512
M_LKH001A	2,596	3,137	3,952	4,342
M_MSTTR02A	16,400	20,916	25,046	27,908
M_MSTTR22A	7,560	7,970	8,259	9,257
M_MSTTR48	10,086	11,968	12,145	15,357
M_PACIFICPS_FM	5,830	7,739	9,368	9,934
M_WINT003	650	634	662	734
M_WINT038	1,894	2,007	1,944	2,979

Model Basins	2010 Employment	2020 Employment	2030 Employment	2040 Employment
M_ABNO27	6,967	1,702	9,096	10,964
M_AUBRN53	8,931	10,826	11,875	12,993
M_AUBWV016	1,483	1,742	1,874	2,134
M_LAKELANDHILLS_WW	787	933	1,027	1,417
M_LKH001A	1,182	1,395	1,536	1,664
M_MSTTR02A	5,239	6,117	6,371	6,854
M_MSTTR22A	4,200	5,544	5,877	6,779
M_MSTTR48	3,026	3,332	3,398	3,726
M_PACIFICPS_FM	3,263	3,552	3,916	4,896
M_WINT003	3,809	4,363	5,027	6,441
M_WINT038	5,965	6,791	7,285	8,655