



2018

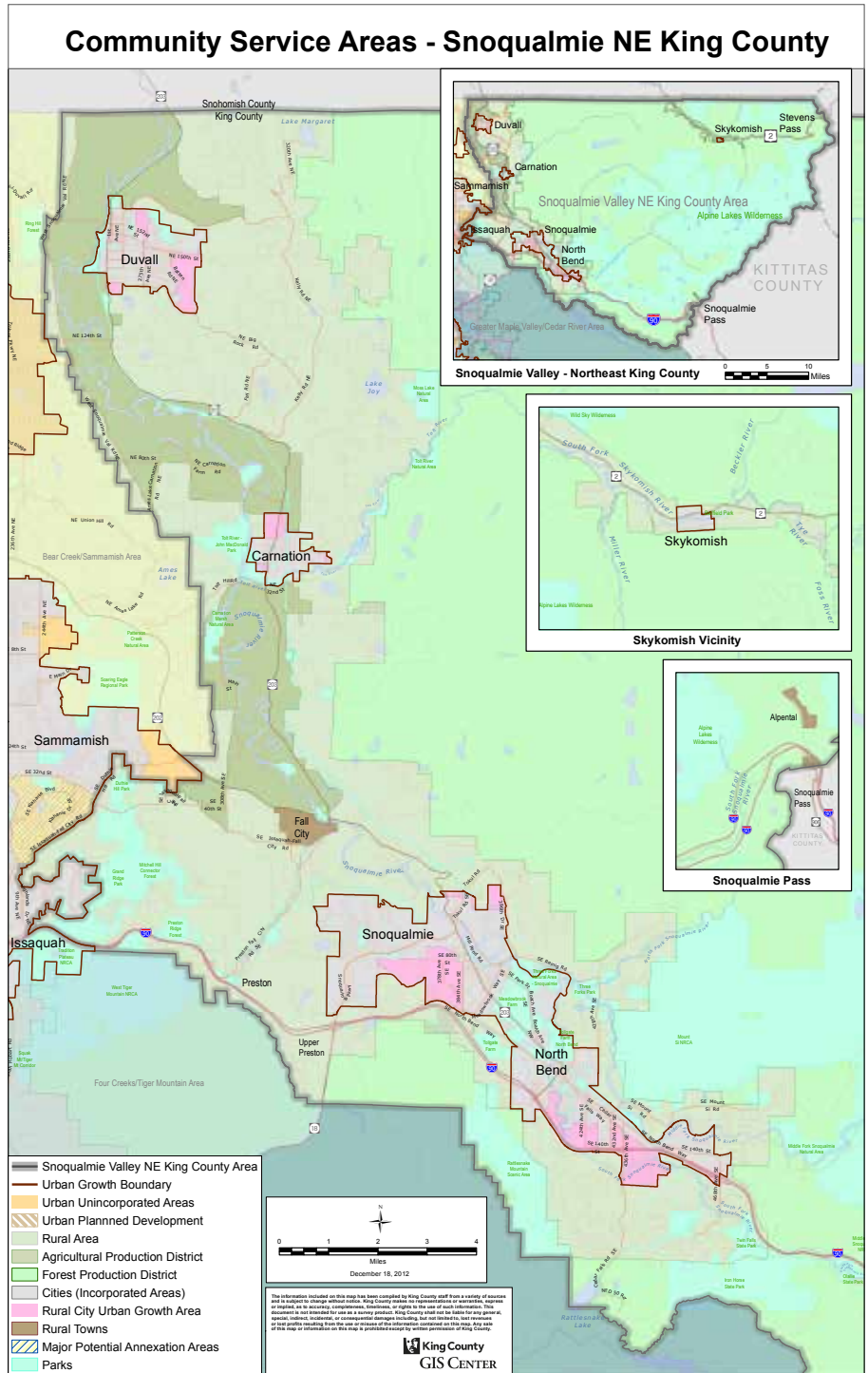
**SNOQUALMIE VALLEY/NORTHEAST CSA
Work Plans**



King County

Community Service Areas - Snoqualmie NE King County

SNOQUALMIE VALLEY/NORTHEAST KING COUNTY AREA includes the rural area surrounding the rural cities of Duvall, Carnation, Snoqualmie, North Bend and Skykomish, along with the rural towns of Fall City and Snoqualmie Pass. The eastern portion of this CSA is the Snoqualmie Valley, which contains the Snoqualmie Valley Agriculture Production District and several rural cities and towns. The majority of the land area in this CSA is made up of the forested Cascade Range which contains portions of the Mount Baker – Snoqualmie National Forest, and the Alpine Lakes Wilderness Area.



King County
Department of
Natural Resources and Parks
 201 South Jackson Street, Suite 700
 Seattle, WA 98104

kingcounty.gov/exec/community-service-areas

Alan Painter, Community Service Area Manager | 206.477.4521 | alan.painter@kingcounty.gov
 Bong Sto. Domingo, Community Liaison | 206.477.4522 | bong.stodomingo@kingcounty.gov
 Marissa Alegria, Community Liaison | 206.477.4523 | marissa.alegria@kingcounty.gov

Welcome to the King County work plan for the Snoqualmie Valley/Northeast Community Service Area of King County.

Contained in this document are the current work plans, initiatives, ongoing projects, and completed projects of King County departments and separately elected offices available in your community. We include contact information for the projects in case you would like further details on specific projects or initiatives.

King County's Community Service Area (CSA) program brings representatives of King County government to residents of unincorporated King County. In addition to the following work program, the CSA team hosts a series of town meetings throughout unincorporated King County as well as offers small grants to community organizations serving residents of unincorporated King County. For more information visit the CSA web site at: <http://www.kingcounty.gov/exec/community-service-areas.aspx>

You can find more information about King County at the County's web site: www.kingcounty.gov

Specific information about initiatives lead by the King County Executive including the following priority initiatives: becoming the nation's best-run government; confronting climate change in King County; building equity and opportunity for all; and strengthening our regional transit mobility can be reached at the Executive's web site: <http://kingcounty.gov/elected/executive/constantine.aspx>

Your community is represented on the King County Council by Councilmember Kathy Lambert, District 3. You can access your councilmember at <http://www.kingcounty.gov/council.aspx>. She can also be reached at 206.477.1003, kathy.lambert@kingcounty.gov.

Thank you for your interest in the many projects and initiatives underway in your community.



Alan Painter
Manager
King County's Community Service Area Program



ASSESSOR'S OFFICE

Property Assessments

2018 Property Valuation and Tax Update

- Provide property tax relief to qualified King County property owners.
- Provide proactive workshops on property tax relief programs, with an emphasis on senior citizen property tax exemptions. Assessor's staff will be available at these workshops to help citizens understand the requirements for the property tax relief, and to register them for the programs, if they qualify.
- Provide detailed valuation and property tax updates for property owners and residents in the unincorporated community service areas.
- Provide physical inspection schedules for all unincorporated community service area neighborhoods and increase public education on the Washington State revenue system at unincorporated community service area community meetings.

Assessor.info@kingcounty.gov | 206.296.7300

COMMUNITY & HUMAN SERVICES

Community Services Operations Programs

Civil Legal Services

Information about civil legal services is available by calling 2-1-1 for non-urgent and non-criminal situations. In case of emergency, call 9-1-1.

Legal assistance is provided to help people in situations including but not limited to:

- legal issues relating to domestic violence or sexual assault
- housing-related legal issues
- people from marginalized communities such as refugees or immigrants
- people living on low incomes
- youth needing legal assistance
- help accessing benefits.

Scott Ninneman 206.263.9072 | scott.ninneman@kingcounty.gov

Domestic Violence (DV) Services

Information about domestic violence (DV) services is available by calling 2-1-1 for non-urgent inquiries, or at <http://www.kingcounty.gov/depts/prosecutor/victim-community-support/domestic-violence.aspx>. In case of emergencies including if you or a loved one is in danger, call 9-1-1. Survivors of domestic violence and their families may also contact any DV agency in the county for assistance.

Scott Ninneman 206.263.9072 | scott.ninneman@kingcounty.gov

Older Adults Services

Information about services for older adults and their caregivers is available by calling Communi-

ty Living Connections at 206.962.8467 or toll free at 1.844.348.5464.

The Sound Generations' Sno-Valley Senior Center serves people living in the Carnation and Duvall areas of the County. The address is 4610 Stephens Avenue, Carnation, WA 98014. The phone number is 425.333.4152.

Marcy Kubbs 206.263.9102 | Marcy.Kubbs@kingcounty.gov

Sexual Assault (SA) Services

Information about sexual assault (SA) services is available by calling 2-1-1 for non-urgent inquiries. In case of an emergency call 9-1-1. Treatment is available for all King County victims of sexual assault at: Harborview Medical Center/Center for Sexual Assault and Traumatic Stress, located at 401 Broadway, Seattle, WA 98104, 206.744.1600; King County Sexual Assault Resource Center, 200 Mill Avenue S., Ste 10, Renton, WA 98057, phone number: 425.226.5062 (Monday through Friday) or the 24 hour Sexual Assault Resource line: 1.888.998.6423.

Scott Ninneman 206.263.9072 | scott.ninneman@kingcounty.gov

Homeless and Housing Programs

Homeless Housing: Homeless Prevention Services and other assistance.

<http://kingcounty.gov/depts/community-human-services/housing.aspx>

Kate Speltz 206.263.9084 | kate.speltz@kingcounty.gov

Hedda McLendon 206.263.8965 | hedda.mclendon@kingcounty.gov

Coordinated Entry for All

Clear path to housing for people experiencing homelessness.

www.kingcounty.gov/cea | 206-328-5796 | cea@kingcounty.gov

Youth and Family Homelessness Prevention Initiative

Client-centered case management and flexible funds to youth ages 12-24 and families with youth who are at imminent risk of homelessness.

<http://kingcounty.gov/beststarts>

Kim Dodds 206.477.7884 | Kimberly.dodds@kingcounty.gov

Major Home Repair

The Housing Repair Program services low-to-moderate income owner occupied residences (repairs, weatherization and disability accommodations). Program objective is to maintain housing stock for low-to-moderate income homeowner. Keeping this housing stock in a safe, decent and habitable condition. To help seniors and veterans age gracefully in place, with the goal to prevent future homelessness.

<http://www.kingcounty.gov/HousingRepair>

Clark Fulmer 206.263.9087 | clark.fulmer@kingcounty.gov

Community Development

Community Development: Capital projects funded for activities to revitalize neighborhoods, improve living conditions for low to-moderate income residents and ▶

Community & Human Services continued

provide microenterprise assistance to income qualified entrepreneurs. Technical assistance services to help agencies build capacity in applying for grant funding to expand and/or improve their service delivery.

<http://www.kingcounty.gov/cdbg>

Kathy Tremper 206.263.9097 | kathy.tremper@kingcounty.gov

Housing Capital Projects

Capital Projects: Project financing to qualified non-profit development organizations or housing authorities in order to provide affordable housing for low-income and vulnerable populations throughout King County.

Quinnie Tan 206.263.5873 | quinnie.tan@kingcounty.gov

Jackie Moynahan 206.477.7524 | jackie.moynahan@kingcounty.gov

Employment & Education Resources

Adult Programs & Services

Employment and training services for unemployed and dislocated workers.

Nancy Loverin 206.263.1394 | nancy.loverin@kingcounty.gov

a) WorkSource Tukwila – A one-stop employment affiliate focused on serving youth aged 16-24 with their employment and education needs. The site also includes King County Career Connections, King County Homeless Employment Program and King County Jobs Initiative. For more information go to: <http://www.kingcounty.gov/eer>

Jamalia Jones 206.477.5581 | jamalia.jones@kingcounty.gov

b) KC Jobs Initiative – Helps adults ages 18 and older who are currently or were previously involved in the criminal justice system for adults on basic food and needs assistance

to get training and living-wage jobs.

<http://www.kingcounty.gov/depts/community-human-services/employment-and-education-resources/adult-services.aspx>

Stephanie Moyes 206.263.9064 | stephanie.moyes@kingcounty.gov

c) Career Connections – Partners with homeless housing agencies to assist homeless families and veterans with education and employment in order to reach independence. Services may include internet services, tuition and book assistance, transportation assistance, tools and uniform assistance.

Stephanie Moyes 206.263.9064 | stephanie.moyes@kingcounty.gov

d) Basic Food Employment & Training (BFET) program – Assists low income adults who are receiving food assistance with their employment and training needs. Services may include help with tuition, job placement and support services.

Stephanie Moyes 206.263.9064 | stephanie.moyes@kingcounty.gov

Youth and Family Programs/Services

Employment, training and education for youth at risk

a) Youth Source – Education, employment and training services for young people ages 16-24 years who have dropped out of school. YouthSource is

located in Tukwila. <http://www.kingcounty.gov/depts/community-human-services/employment-and-education-resources/youth-services.aspx>

Jennifer Hill 206.263.9024 | jennifer.hill@kingcounty.gov

Jamalia Jones 206.477.5581 | jamalia.jones@kingcounty.gov

b) Youth & Family Services Program – Friends of Youth serves eligible

youth and their families living in the service area.

Stephanie Moyes 206.263.9064 | stephanie.moyes@kingcounty.gov

c) Juvenile Justice Program – Education and employment services for justice-involved youth are available regionally.

Zac Davis 206.263.4162 | zdavis@kingcounty.gov

KC Veterans Program

If you are in need of veterans' resources, please contact the King County Veterans Information and Assistance Call Center at 1-877-904-VETS (8387) or by going to: <http://www.kingcounty.gov/depts/community-human-services/veterans.aspx>

Bryan Fry 206.477.6996 | Bryan.Fry@kingcounty.gov

Veterans, Seniors and Human Services Levy

The Veterans, Seniors and Human Services Levy (VSHSL) was renewed in November 2017 and is a county property tax generating about \$52 million annually, supporting veterans and military servicemembers and their respective families; seniors and their caregivers; and vulnerable populations in King County by funding capital facilities and regional health and human services to promote housing stability, healthy living, financial stability, social engagement and health and human services system improvements and system access throughout King County. Additional information on the VSHSL can be found on the website:

www.KingCounty.gov/VSHSL

Leo Flor 206.477.4384 | Leonardo.Flor@kingcounty.gov

Developmental Disability Division

Developmental Disabilities Programs and Services

Programs and services support children prenatal to five and individuals with developmental delays/ disabilities and their families to lead full, integrated, and productive lives: <http://www.kingcounty.gov/ddd>

- Prenatal to Five
 - Promoting Development—creating a comprehensive system for screening developmental milestones with all children prenatal to five and linking families with appropriate referrals.
 - Social-Emotional Wellbeing—supporting close and secure relationships for all children, prenatal to 5 years of age with caregivers and to explore the environment and learn—all in the context of family, community, and culture—with a system of promotion, prevention and treatment, when needed.
 - Early Support for Infants and Toddlers—Individualized “birth-to-three” services to promote optimal development for children with

Community & Human Services continued

developmental delays or disabilities and their families. Call Family Health Hotline to refer at 800.322.2588.

- School-to-Work Program - assists high school students to leave school with a job and a seamless transition to adult life
- Employment Services - supports adults with individualized pathways to employment so they may obtain competitive jobs
- Community Inclusion Services – assists adults to develop meaningful relationships that promote integration into their communities
- Behavioral Support Team Program – provides intensive wrap-around services for children and youth ages 3-17
- Community Information and Outreach Services - supports information, referral, and outreach to individuals and families

Magan Cromar 206.263.9045 | magan.cromar@kingcounty.gov

Behavioral Health and Recovery Division

1. Mental health (24-hour crisis outreach, treatment services) <http://www.kingcounty.gov/bhrd>

Suicide Prevention:

- a) 1.866.4CRISIS
- b) 206.461.3219 TDD
- c) 1.800.273.TALK (8255)

King County Crisis and Commitment Services: 206.263.9200
Jim Vollendroff 206.263.8903 | jim.vollendroff@kingcounty.gov

2. Substance use disorder (inpatient and outpatient services) <http://www.kingcounty.gov/bhrd>
Jim Vollendroff 206.263.8903 | jim.vollendroff@kingcounty.gov
Washington Recovery Helpline 24-hour help with mental health, substance use, and problem gambling:
1.866.789.1511 | www.WaRecoveryHelpLine.org

King County Mental Illness and Drug Dependency (MIDD)

King County's Mental Illness and Drug Dependency (MIDD) is a countywide 0.1% sales tax generating about \$134 million in the 2017-2018 biennium. The funds support programs and services for people living with mental health conditions and/or substance use disorders. King County's MIDD is managed and operated by the King County Department of Community and Human Services Behavioral Health and Recovery Division. A 36-member advisory committee provides guidance to the implementation and evaluation of MIDD programs and services. Among MIDD's forthcoming new initiatives will be a new fund to provide small grants for behavioral health-related projects and activities initiated by King County's rural communities (grant program launch is expected during 2018).

www.kingcounty.gov/midd

Chris Verschuyl 206.263.8941 | chris.verschuyl@kingcounty.gov

Best Starts for Kids Levy

The Best Starts for Kids Levy is an initiative to improve the health and well-being of King County by investing in promotion, prevention and early intervention for children, youth, families and communities.

<http://www.kingcounty.gov/beststarts>

Sheila Capestany 206.263.7823 | sheila.capestany@kingcounty.gov

Communities of Opportunity (COO)

Communities of Opportunity is a network of residents, communities, decision-makers, and funders who believe every community can be a healthy, thriving community—and that equity and racial justice are both necessary and achievable. COO is supported by an innovative public-private partnership between King County and Seattle Foundation to improve the health and well-being of communities across King County.

COO works to achieve more equitable community conditions through community partnerships in geographic and cultural communities, systems and policy change, and shared learning. COO coordinates opportunities for learning, capacity building, and technical assistance available to a wide range of community organizations. Early investments are bringing partnerships together in White Center, SeaTac/Tukwila, Kent, rural Snoqualmie Valley, Seattle's Rainier Valley and Central District, within Vashon's Latinx community, the Seattle urban Native community, and LGBTQ community, to support and test community-driven solutions. In addition, a diverse group of more than 50 organizations across the County received grants to engage in systems/policy work that influences health, social, economic and racial equity.

<http://www.kingcounty.gov/coo>

Andrea Akita 206.477.4203 | andrea.akita@kingcounty.gov

COMPLETED PROJECTS

Veterans, Seniors & Human Services Levy (VSHSL) Community Meetings

Fall City Library (11/15/17)

At these events, King County residents were invited to participate in a community conversation on the strengths and needs of their community with staff from the Department of Community and Human Services. In total, King County hosted 28 conversations, nine focus groups, and four online surveys. The input received through this process informed the populations, result areas, and development of the Veterans, Seniors and Human Services Levy, Ordinance 18555 as placed on the ballot November 7, 2017.

Adam Schmid 206.477.9338 | adam.schmid@kingcounty.gov

King County Council - Ordinance 18555

On July 20, 2017 the King County Council approved ▶

Community & Human Services Continued

Ordinance 18555, authorizing placement of the Veterans, Seniors and Human Services Levy (VSHSL) on the November 7, 2017 ballot. Planning for the VSHSL was conducted by the Department of Community and Human Services and informed by departmental research, stakeholder consultation and community feedback.

The VSHSL was passed by King County voters on the November 2017 General Election.

Adam Schmid 206.477.9338 | adam.schmid@kingcounty.gov

ONGOING PROJECTS

Veterans, Seniors & Human Services Levy (VSHSL) - Community Engagement (2018)

Public participation is vital to the VSHSL Implementation Plan and the ongoing development of the VSHSL. King County residents can provide input through a series of online surveys (available in multiple languages) on the VSHSL Planning website: www.kingcounty.gov/VSHSLPlanning. This website will share updates and stories on the VSHSL, host surveys for your input, provide a calendar of public meetings, and publish reports throughout the VSHSL.

Adam Schmid 206.477.9338 | adam.schmid@kingcounty.gov

KING COUNTY DISTRICT COURTS

Court Services

Seattle, Shoreline, Renton, Burien, Kent, Redmond, Bellevue, Issaquah, Vashon Island

- Passports
- Domestic Violence
- Anti-Harassment
- Small Claims (up to \$5,000)
- Civil (under \$75,000)
- Opportunity to mitigate/defer/contest traffic infractions
- Relicensing
- Inquest Hearings
- Name Changes
- Vehicle Tow and Impound Hearings
- False Alarm Hearings
- Marriage Ceremonies
- Garnishments and other supplemental proceedings.
- Interpreters for Court Hearings
- Lien Foreclosure and forfeiture hearings
- Therapeutic Courts – Mental Health and Veterans Court
- Eliminate barriers to court access, prosecute accused individuals fairly and efficiently while managing and resolving court cases in a timely manner.
- Protecting the Public Safety by providing resources to hold convicted offenders accountable for their actions.

Call Center 206.205.9200

EXECUTIVE OFFICE

Executive Office - Performance, Strategy & Budget Budget

King County uses a biennial (two-year) budget and the 2017-2018 Budget was adopted in November 2016. Several amendments have been made since but none has significantly affected County services. There has been considerable concern that federal budget changes would adversely affect certain County services, but such changes have been minor so far.

The County is beginning the process to develop the 2019-2020 Budget. Most funds are in good fiscal condition, but revenue limitations mean there is continuing stress on the General Fund, Roads Fund, and Public Health Fund. Reductions in services paid for from the General Fund and Public Health Fund are likely. The Roads Fund is stable but has far less money than is needed to maintain the existing roads system. PSB continues to support tax reform efforts to address these long-term financial problems.

Dwight Dively 206.263.9687 | dwight.dively@kingcounty.gov
Jonathan Swift 206.263.9699 | jonathan.swift@kingcounty.gov

Continuous Improvement

PSB continues to deploy the Lean continuous improvement methodology to transform the systems, tools, processes, and culture in County operations to drive greater efficiency and effectiveness in the services and products we provide to our communities.

Gary Kurihara 206.263.8026 | gary.kurihara@kingcounty.gov

Performance & Strategy

PSB continues to use proven management tools such as strategic planning, performance measurement, public performance reporting, visual management, and Executive performance reviews to align key County priorities, ensure accountability for strategic and operational performance, and to communicate to the public how the County is doing on delivering effective, efficient, and equitable services.

The Criminal Justice Strategy and Policy Section will continue to work on advancing systemic criminal justice reforms including alternatives to incarceration, reducing recidivism, and supporting the Executive's path to zero youth detention initiative.

Michael Jacobson 206.263.9622 | michael.jacobson@kingcounty.gov

King County Comprehensive Plan Implementation

PSB leads updates to the King County Comprehensive Plan, most recently in 2016. PSB will coordinate and monitor work on several Action Items included in Chapter 12: Implementation. A number of these efforts will include public engagement and outreach, including:

- Review of the Transfer of Development Rights ▶

Executive Office continued

- Program (Dept. of Natural Resources and Parks),
- Initiation of an Alternative Housing Demonstration Project (i.e., small-home developments- Dept. of Community and Human Services),
- Development of a Bicycle Planning Network Report (Dept. of Transportation),
- Review of the Four to One Program (Office of Performance, Strategy and Budget), and
- Response to a recent court decision regarding permit-exempt wells in the rural area (Dept. of Permitting & Environmental Review).
- Additional information on these activities and other long-range planning activities will be shared publicly over the coming months as they develop and will be shared with people on the Comprehensive Plan Mailing list, which can be accessed at www.kingcounty.gov/compplan/.

Ivan Miller 206.263.8297 | ivan.miller@kingcounty.gov

EXECUTIVE SERVICES

RAALS (Records & Licensing Services)

Community Service Centers (CSCs)

The King County Community Service Center (CSC) Program works to make it easier to do business with King County via sites located throughout the county. Services provided:

- Apply for a U.S. passport
- Apply for a Washington State marriage license
- Purchase copies of documents recorded with the King County Recorder's Office on or after August 1, 1991.
- Pay King County property taxes
- Purchase or renew a King County pet license
- Obtain information on other county services and programs such as: senior citizen property tax exemptions; assessment appeal forms; property assessment information; local fresh produce guides; bus, bike, or ferry information; King County job listings and applications.

Because King County Community Service Centers offer services on behalf of several agencies, different guidelines or rules apply depending on the service. For additional information on any service, please check out the CSC website: <http://www.kingcounty.gov/depts/records-licensing/community-service-centers.aspx> and contact the site you intend to visit.

- Bothell
- Downtown Seattle - no passport services
- Issaquah - no passport services
- Kent
- Renton

- Shoreline - no passport services
<http://www.kingcounty.gov/operations/csc.aspx>
Jon Scherer, Recording Manager | 206.477.6644

E-911

Smart 911

King County launched Smart911 in September, 2012 - a supplemental data service that allows residents to Create a Safety Profile that can be seen by emergency responders when you call 9-1-1.

Enhanced 911 Program Office

20811 84th Ave S, Suite 105

Kent, WA 98032

206.477.4910

OEM (Office of Emergency Management)

Emergency Management

Emergency preparation and response

A number of hazards (from earthquakes to major winter storms) threaten Western Washington. There are specific things residents can do to stay safe and protect their property during these sometimes devastating conditions. King County Emergency Management provides resources, tips, and download-able checklists (in multiple languages). To talk to someone about what you and/or your community can do to prepare for emergencies, please contact KCOEM using the information below.

KCOEM also administers regional public alerts to help residents stay informed about potential hazards and threats that impact their area. Sign-up is free: www.kingcounty.gov/ALERT

King County Office of Emergency Management

3511 NE 2nd Street | Renton, WA 98056

Main Phone: 206.296.3830 | Toll Free: 800.523.5044

Fax: 206.205.4056 | ecc.kc@kingcounty.gov

METRO TRANSIT

Metro Transit Service

Metro provides service on two routes in this area, mainly connecting pockets of development in Issaquah, Fall City, Carnation, Duvall, and North Bend. Metro also supports the Snoqualmie Valley Shuttle, in partnership with the Snoqualmie Tribe, operated by Snoqualmie Valley Transportation (SVT).

- Route 208: Serving High Point at SE 270th Ave SE at I-90; Monday-Saturday, about every two hours.

- Route 628: Operating between North Bend and the Issaquah Highlands Park & Ride, Monday-Friday, every 30 minutes from 5-8 a.m. and 5-9 p.m.

- Snoqualmie Valley Shuttle: Serving communities between Duvall and North Bend along NE Big Rock Rd,

Carnation-Duvall Rd, Fall City-Carnation Rd, and SE Fall

City-Snoqualmie Rd; Monday-Friday, about every 90 minutes.

Jeff Lee 206.477.5870 | jeff.lee@kingcounty.gov

Metro Transit continued

Community Connections

The King County Council approved \$15 million for the Community Connections program in the 2017-2018 biennium budget. Community Connections is the new name (as of March, 2017) for what was originally known as the Alternative Services Demonstration Program. It is a four-year (2015-2018) demonstration program in which Metro works with local governments and community partners to develop innovative and cost-efficient transportation solutions in areas of King County that don't have the infrastructure, density, or land use to support regular, fixed-route bus service. The program aims to develop, test, and evaluate new transportation services that take advantage of innovative ideas, unique partnerships, or emerging technology.

There are three Community Connections projects currently in operation in the Snoqualmie Valley. The first two are products of Metro's Five Year Implementation Plan for Alternative Service Delivery (September 2012), resulting in the development of the Snoqualmie Valley Shuttle (Route 629) in 2013 and Duvall's Community Van and Community Transportation Hub in 2016. The third project was in response service reductions in September 2014 and resulted in the launch of the Snoqualmie Community Shuttle (Route 628) in 2015.

Snoqualmie Valley Shuttle (Route 629)

In 2013, Metro and Snoqualmie Valley Transportation launched the Snoqualmie Valley Shuttle to provide weekday service between North Bend and Duvall Park-and-Rides, with stops in Snoqualmie, Fall City, and Carnation. The route was established through a partnership between the County, the Snoqualmie Tribe, and Snoqualmie Valley Transportation.

Duvall Community Van and Community Transportation Hub

Duvall Community Van and Community Transportation Hub were made possible through a joint agreement between King County and the City of Duvall. The Duvall Community Van provides prearranged group trips targeted to residents who live in the incorporated and unincorporated areas of Duvall. The Community Van can provide access to local services in the midday, evening, or weekend, as well as for group recreational and shopping trips to surrounding cities. The Community Transportation Hub allows community members to learn about local transportation options at an online hub or at physical locations at City Hall and Duvall Library.

Snoqualmie Community Shuttle (Route 628)

Following service reductions in September 2014, Metro consulted with staff and elected officials from the affected jurisdictions and determined the priority need for an alternative service was to mitigate the loss

of peak commuter service in North Bend and Snoqualmie, and feed riders to the regional transit network via the Issaquah Highlands Park-and-Ride. Metro contracted with Hopelink to operate the Snoqualmie Community Shuttle, a weekday, peak-period Community Shuttle operating between North Bend and Issaquah Highlands via Snoqualmie with flexible service area in the Highlands area. Service was launched in 2015 through a partnership with King County Metro and the City of Snoqualmie. As part of Metro's September 2017 service change, a stop at Preston Park and Ride was added to the route.

Cathy Snow 206.477.5760 | cathleen.snow@kingcounty.gov

METRO CONNECTS Long-Range Plan

King County Council adopted Metro's long-range plan, METRO CONNECTS, in January 2017. The Plan presents a shared vision for a future public transportation system that gets people where they want to go and helps our region thrive. It describes an integrated network of transportation options in 2025 and 2040, the facilities and technology needed to support those services, and the financial requirements for building the system. It was developed in close coordination with Sound Transit and other transportation agencies. More information is available online at kcmetrovision.org.

Graydon Newman 206.477.5862 | graydon.newman@kingcounty.gov

METRO CONNECTS Development Program

The METRO CONNECTS Development Program (MCDP) is a midrange planning effort that outlines the timing and substance of Metro's efforts to achieve the METRO CONNECTS vision for service and infrastructure in 2025. Major elements of this program include creating a schedule that shows where, how much, and when Metro will invest in the service growth and capital improvements that METRO CONNECTS envisions; and establishing a regular forum to engage and coordinate with cities and stakeholders on the implementation of METRO CONNECTS through the Program's Technical Advisory Committee (TAC). The MCDP is planned to be a rolling program that will inform decision-making in 6-10-year increments over each successive biennium.

King County transmitted materials for approval to King County Council in October 2017, and anticipates approval in early 2018. Metro's planning work is ongoing to develop more detail on projects needed to develop the 2025 service network.

Graydon Newman 206.477.5862 | graydon.newman@kingcounty.gov

Metro Transit moving to a new level in King County government

In September 2017, King County Executive Dow Constantine announced his proposal to make Metro Transit its own department within King County government—no longer a division of the Department of

Metro Transit continued

Transportation as it is now.

Why? Demand for public transportation is rising, and our region is counting on Metro to deliver more and better transit services. The agency will be in a stronger position to deliver on this expectation as a stand-alone department.

Metro will be making internal organizational changes and developing a new budget with the goal of becoming a department in early 2019. Metro riders will not be affected by the agency's transition to department status.

Fleet Administration**On-going internal support services**

Fleet Administration is an internal customer service agency that provides cost effective vehicle services, parts, materials and construction supplies. Our goal is to manage a safe responsive fleet of vehicles and equipment, employee access to materials and supplies, in order to respond to the needs of King County citizens.

Jennifer Lindwall 206.477.3883 | jennifer.lindwall@kingcounty.gov

Fleet provides King County personal property asset management services including mandatory annual inventory report, warehousing and dispersal of surplus items. Our goal is to maintain accurate procedures for the accountability of King County personal property inventory.

Russ Johnson 206.477.3889 | russ.johnson@kingcounty.gov

**NATURAL RESOURCES & PARKS
PARKS****Future Funding for King County Parks**

The King County Parks, Trails, and Open Space Replacement Levy provides the majority of funding for the King County Parks system. This six-year voter-approved levy, which passed with over 70% support, began in 2014 and will be expiring in 2019. Examining options for future funding will be a major work item for King County Parks staff in 2018.

<https://kingcountyparks.org/2017/03/18/steady-as-she-goes/>

Doug Hodson 206.477.5918 | doug.hodson@kingcounty.gov

Parks Customer Service and Outreach

King County Parks has launched a new online reservation system for camping, picnic shelters, and other park amenities throughout the County. Parks is piloting a new mobile and online tool called SeeClickFix for park and trail visitors to report issues and make suggestions.

Matthew Perkins 206.477.4527 | matthew.perkins@kingcounty.gov

Forest Stewardship

In 2017, UW forestry students completed a forest stewardship plan for Soaring Eagle Regional Park and Patterson Creek Natural Area. In 2018, UW forestry students will draft a forest stewardship plan for Tolt

MacDonald Park and Moss Lake Natural Area.

David Kimmett 206.477.4573 | david.kimmett@kingcounty.gov

Music Festival at Tolt-MacDonald Park in Carnation

The Annual Timber! Outdoor Music Festival is taking place July 13 – 15, 2018. The festival attracts more than 3,000 participants from across the nation and encourages business activity for the City of Carnation. Visit <http://www.timbermusicfest.com/> for more information.

Ryan Dotson 206.477.4562 | ryan.dotson@kingcounty.gov

Alpine Baldy Mountain Bike Trails near Skykomish

Evergreen Mountain Bike Alliance (EMBA), a Community Partnerships and Grants Program partner with King County Parks, built an eight mile long subalpine mountain trail along the east ridge and picturesque south slope of Alpine Baldy Mountain on the north edge of the county, near the town of Skykomish.

Scott Thomas 206.477.4586 | scott.thomas@kingcounty.gov

Preston Mill Park

Design, permitting, and construction of new restroom, picnic shelter, shoring up of mill building and kiln building (initially as interpretive displays), interpretive signs, and trails with connectivity to Preston community center. Design development and permitting will be underway until Summer 2018 with construction hopefully beginning in late Summer / early Fall.

T.J. Davis 206.229.3965 | tj.davis@kingcounty.gov

Middle Fork Snoqualmie River Valley Planning

The National Park Service's Rivers, Trails & Conservation Assistance (RTCA) program has awarded a technical assistance grant to the Mt. Baker-Snoqualmie National Forest (MBS) and the Mountains to Sound Greenway Trust (the Greenway) on the Middle Fork Valley Visitor Use project. RTCA will facilitate a planning process with coalition partners including King County Parks and the public to gather input and build agreement around a shared vision, desired conditions, and strategies to address visitor use in the Middle Fork Snoqualmie River Valley.

Kelly Heintz 206.477.6478 | kelly.heintz@kingcounty.gov

COMPLETED PROJECTS**Preston Athletic Fields Renovations**

Turf replacement at the Preston Athletic fields was completed in 2017.

Tri Ong 206.477.3591 | tri.ong@kingcounty.gov

Tolt-MacDonald Barn Renovation

In 2016 and early 2017, the Tolt MacDonald Barn underwent design and permitting to replace the roof, provide structural and life safety upgrades, repair and repaint the exterior.

Mari Gregg 206.477.4568 | mari.gregg@kingcounty.gov ▶

Natural Resources & Parks continued

Carnation Marsh Natural Area Restoration

King County received a grant through the North American Wetlands Conservation Act to enhance approximately 12 acres of wetland habitat the Carnation Marsh Natural Area by controlling invasive vegetation and planting native species. This work was completed in February 2017.

Lindsey Miller 206.477.3549 | lindsey.miller@kingcounty.gov

Acquisitions

King County Parks, in partnership with the King County Water and Land Resources Division, is working with community members to identify strategic acquisitions that provide fish and wildlife habitat, agricultural preservation and passive recreation opportunities.

David Kimmett 206.477.4573 | david.kimmett@kingcounty.gov

Volunteer Program Events

833 volunteers gave 3,978 hours at volunteer events – tasks included trail maintenance, new trail construction, planting native trees and shrubs, removing invasive plants, and litter pick up. Sites included: Carnation Marsh, Duthie Hill Park, Grand Ridge Park, Moss Lake Natural Area, Three Forks Natural Area, Tolt MacDonald Park & Campground, Chinook Bend Natural Area, Preston Athletic Fields, Preston Mill, Issaquah to Preston Trail and Tanner Landing Park. Microsoft, Concur, REI, Scouts, Cedar Waldorf School, Ryther, Washington Trails Association, Mountains to Sound Greenway, Two Rivers School, and AmeriCorps NCCC groups provided support for volunteer events at many of these sites.

Laurie Clinton 206.477.6113 | laurie.clinton@kingcounty.gov

ONGOING PROJECTS

On-going Maintenance and Easement Monitoring

Maintenance of Tolt MacDonald, Three Forks, Grand Ridge, Fall City Park, Tanner Landing, Duthie Hill, Preston Park, Preston Athletic Fields, Preston Community Center, Snoqualmie Valley Trail, Preston-Snoqualmie Trail and other park facilities within the service area as well as On-going monitoring of conservation easements. Community outreach continues with EMBA, Washington Trails Association, Washington State Department of Natural Resources, Fall City Park District, Snoqualmie Indian Tribe, Raging River Riders, Eastside Fire and Rescue, Eastside Football Club, Preston Community Club and other user groups within the service area.

Don Harig 206.477.6140 | don.harig@kingcounty.gov

Volunteer Program Events

Volunteers that participate in the King County Parks volunteer program provide more than 55,000 hours of service in our parks, trails and natural areas each year. From building and repairing backcountry trails

to removing invasive plants and planting native plants to promoting recycling and composting at summer concerts these volunteers are a vital part of the maintenance and improvement of the system. These volunteers play an important role in stewarding our 28,000 acres of open space. Sign-up for the volunteer newsletter for a listing of scheduled events in the area at: Volunteer - King County Want to know what it's like to volunteer with us? Check out our new video: Volunteer with King County Parks on Vimeo If you, your group or business is interested in doing a volunteer project at your favorite King County Park site, we can work with you to plan a custom event. Please contact Volunteer Program Manager Laurie Clinton for custom events and any additional volunteer service opportunities in King County Parks.

Laurie Clinton 206.477.6113 | laurie.clinton@kingcounty.gov

Youth and Amateur Sports Grant Program

King County Parks launched a new grant program in 2017. Youth and Amateur Sports Grants (YASG) support fit and healthy communities by investing in programs and capital projects that reduce barriers to access physical activity. King County Parks hosted information sessions in October and the application deadline was in November. Applications will be evaluated and awarded in January 2018. To learn more about the program visit the website at <http://www.kingcounty.gov/services/parks-recreation/parks/get-involved/partnerships-and-grants/yasg.aspx>

Butch Lovelace 206.477.4577 | butch.lovelace@kingcounty.gov

Trailhead Direct

King County Parks and King County Metro launched the pilot season of Trailhead Direct. Trailhead Direct wrapped up its inaugural season on Oct. 14-15. Operating since Aug. 5 from the Issaquah Transit Center and averaging about 40 riders per day, Trailhead Direct connected hikers to more than 5,000 acres of protected lands with 150 miles of hiking trails in the Issaquah Alps. Stops included: Margaret's Way trailhead at Cougar-Squak Corridor Park, the Poo Poo Point trailhead on West Tiger Mountain, East Sunset Way Trailhead in Issaquah, Issaquah Highlands Park-and-Ride and Issaquah Transit Center. The service will continue in spring of 2018. To learn more visit: <https://kingcountyparks.org/2017/07/12/trailhead-direct-park-ride-hike/>

Ryan Dotson 206.477.4562 | ryan.dotson@kingcounty.gov

Family Movie Nights

Join King County Parks in summer 2018 for a special outdoor movie night in your Big Backyard. This is a free event so bring your low-backed chairs, blankets, snacks, and enjoy a relaxed evening in the park. The movie will be projected onto a 40-foot tall inflatable movie screen so invite your friends, teammates and family- we've got ▶

Natural Resources & Parks continued

space! Dates and locations to be decided.

Elizabeth Jessup 206.263.0584 | elizabeth.jessup@kingcounty.gov

Solid Waste Division

(Includes Duvall, Carnation, Snoqualmie, North Bend and all areas east of Skykomish) Time limited 2017 projects that are scheduled for work and completion in 2017 or 2018

Comprehensive Solid Waste Management Plan Update

The Solid Waste Division is preparing a draft plan for public review and comment that broadly outlines how King County will manage garbage for the next 20 years. Topics covered in the plan range from waste prevention, recycling and solid waste collection, to transfer and disposal of waste and how these services will be financed. Three key topics are being addressed in the plan: 1) how will King County dispose of its garbage over the long term, 2) what type of transfer services should be provided in northeast King County, and 3) how will we increase recycling to reach a 70% recycling goal. Public comment will be sought in early 2018. Website: <http://kingcounty.gov/depts/dnrp/solid-waste/about/planning/comp-plan.aspx>

Beth Humphreys 206.477.5264 | beth.humphreys@kingcounty.gov

ON-GOING PROGRAMS

Self-haul Recycling Separation Requirement

Beginning in January 2018, customers will be required to separate yard waste, clean wood, cardboard, and scrap metal from their garbage at facilities where those materials are accepted for recycling.

Dale Alekel 206.477.5267 | dale.alekel@kingcounty.gov

Waste Reduction and Recycling Outreach and Education

Includes programs and services such as:

- Recycle More/Recicla Mas – education and outreach to single-family residents on how to recycle more materials in curbside programs. Includes targeted outreach to Spanish speaking community.

Websites: <http://your.kingcounty.gov/solidwaste/garbage-recycling/recycle-more.asp>, and <http://your.kingcounty.gov/solidwaste/reciclamas/index.asp>

- K-12 Schools program – assembly programs, classroom workshops and assistance to student Green Teams. Website: <http://your.kingcounty.gov/solidwaste/secondary-school/index.asp>

- Green Schools Program - assists more than 200 private and public K-12 schools in a dozen school districts to initiate and improve waste reduction, recycling, energy and water conservation, pollution prevention and other conservation practices. Recognizes schools and school districts that complete “Best Practice Guides.” Website: <http://your.kingcounty.gov/solidwaste/greenschools/index.asp>

- Recycling Collection Events - King County funding provided to cities and unincorporated areas to offer events for residents and businesses to recycle select materials:

Website: <http://your.kingcounty.gov/solidwaste/garbage-recycling/events.asp>

- Carnation and Skykomish Recycling Collection Events accept neighboring unincorporated area residents
- EcoConsumer – Offering free community repair events in Kirkland, Issaquah, Renton and other communities. The EcoConsumer public outreach program also provides information and resources about waste reduction and other environmental concerns to the public and media through TV and radio segments, articles, presentations, social media and more.

Website shortcut: KCecoconsumer.com

Tom Watson 206.477.4481 | tom.watson@kingcounty.gov

- Green Tools – this green building program supports county agencies, cities, the building community, and the public in designing buildings and structures that have fewer impacts on the environment, are energy efficient, and use recycled materials.

Website: <http://your.kingcounty.gov/solidwaste/greenbuilding/index.asp>

- Construction & Demolition Waste (C&D) - C&D recycling requirements are in effect throughout the County – an informational presentation can be scheduled for your CSA by contacting

Kinley Deller at kinley.deller@kingcounty.gov. <http://your.kingcounty.gov/solidwaste/greenbuilding/construction-demolition.asp>.

- LinkUp – works with businesses, agencies and other organizations in the Puget Sound area to expand markets for selected recyclable and reusable materials.

Website: <http://your.kingcounty.gov/solidwaste/linkup/index.asp>

- Customer Service - Information/education provided to customers/public on SWD services via web pages and phone support. Website: <http://your.kingcounty.gov/solidwaste/index.asp>

Solid Waste Division Customer Service: 206.477.4466 | TTY Relay: 711

Transfer Stations

The Cedar Falls and Skykomish Drop Boxes are facilities where residents and businesses bring their waste and recyclable materials for disposal. Websites: <http://your.kingcounty.gov/solidwaste/facilities/cedar-transfer.asp?ID=347>;

<http://your.kingcounty.gov/solidwaste/facilities/skykomish-transfer.asp?ID=366>

Solid Waste Division Customer Service: 206.477.4466, TTY Relay: 711

Household hazardous waste collection

Offers free collection of hazardous waste from households and qualifying businesses at two fixed collection sites and the travelling Wastemobile.

- Factoria Household Hazardous Waste Drop Off Service Auburn Wastemobile at Outlet Collection

- Duvall/Carnation, and Snoqualmie/North Bend Wastemobile Event

Websites: HHW Facility location and hours: <http://your.kingcounty.gov/solidwaste/facilities/hazwaste.asp>

Wastemobile schedule: <http://www.lhwmp.org/home/HHW/wastemobile.aspx>

Household Hazards Line 206.296.4692

Litter and Illegal Dumping

Includes several programs, including:

- Community Litter Cleanup - Coordinate cleanup of illegal dumpsites and litter on public property

Morgan John 206.477.4624 | morgan.john@kingcounty.gov

- Illegal Dumping Hotline – maintains hotline for citizens to report illegal dumping, directs those complaints to the appropriate agency for follow up

Hotline: 206.296.SITE (7483)

- Junk Vehicle – provides information and facilitates process for removing abandoned vehicles from private property

Mary Impson 206.296.4437 | mary.impson@kingcounty.gov

- Community Cleanup Assistance Program – financial assistance (waived tip fees) to private property owners who are either low income or whose property has been dumped on. Website: <http://your.kingcounty.gov/solidwaste/cleanup/index.asp>. For more information visit <http://kingcounty.gov/depts/dnpr/solid-waste/programs/litter-dumping.aspx>

Terri Barker 206.477.5214 | terri.barker@kingcounty.gov

Landfill Operations

Closed and Custodial Landfill Maintenance and Monitoring - maintain and monitor groundwater, surface water, wastewater, and landfill gas at closed landfills, including:

- Duvall Closed Landfill
- Cedar Falls Closed Landfill (in North Bend)

Website: <http://your.kingcounty.gov/solidwaste/facilities/closed-landfills.asp>

Anne Holmes 206.477.5223 | anne.holmes@kingcounty.gov

Community Cleanup Assistance Program

Financial assistance (waived tip fees) to private property owners who are either low income or whose property has been dumped on. Website: <http://your.kingcounty.gov/solidwaste/cleanup/index.asp>. For more information visit <http://kingcounty.gov/depts/dnpr/solid-waste/programs/litter-dumping.aspx>

Terri Barker 206.477.5214 | terri.barker@kingcounty.gov

WATER & LAND RESOURCES DIVISION

Lower Frew Levee Setback and Floodplain Reconnection

Remove an existing King County levee and construct a setback facility; thereby reconnecting up to 34 acres of floodplain habitat to the Tolt River. The setback levee will tie into the Snoqualmie Valley Trail on the upstream end and State Route 203 on the downstream end. The project will improve river and floodplain habitat through the restoration of natural riverine processes, reduce flood risk by constructing a setback levee that meets current engineering standards, and provide recreational access along the top of the setback levee. The current construction target is summer 2021.

Sarah McCarthy 206.477.4766 | sarah.mccarthy@kingcounty.gov
Mary Maier 206.477.4762 | mary.maier@kingcounty.gov

Holberg Levee Improvements Feasibility Study

This feasibility study will assess the current levee condition and consider the opportunities and benefits asso-

ciated with improvement alternatives to address lateral migrations risk for the portions of the Holberg levee that have not been modified since the facility was originally constructed in 1960. The feasibility study will be completed in 2018 for use by the King County Flood Control District to select a preferred alternative to provide improved flood risk reduction to properties at risk.

Jay Smith 206.477.4356 | jay.smith@kingcounty.gov

Tolt River Levee Level of Service Analysis

The lower two miles of the Tolt River is confined between a network of levees that provides inadequate and uneven levels of flood protection. Much of the levee network confining the lower two miles was constructed prior to the 1960s and does not meet current design standards. Proposed setback levees provide a secure limit to channel migration hazards and more space for river flows and sediment storage.

This project will involve constructing a detailed hydraulic model to optimize the elevation of new levees to maximize flood risk reduction benefits. The Level of Service Analysis will be initiated in 2018 and will be conducted in coordination with other projects stemming from the Tolt River Corridor Capital Investment Strategy including the Lower Frew Levee Setback and Floodplain Reconnection project and the Sediment Management and State Route 203 Feasibility Studies.

Jay Smith 206.477.4356 | jay.smith@kingcounty.gov

State Route 203 Bridge Improvements Feasibility Study State Route 203 is the main arterial serving the east side of the Snoqualmie Rivr Valley. The bridge approaches on the north and south sides of the river are fill prisms within the historical floodplain that present limits to Tolt River flood flow conveyance and increase upstream water surface elevations and flood risks.

This feasibility study will examine opportunities, costs, and benefits associated with increasing flow conveyance in coordination with WA State Department of Transportation and the City of Carnation. The State Route 203 Feasibility Study will be initiated in 2018 and will be conducted in coordination with other projects stemming from the Tolt River Corridor Capital Investment Strategy including the Lower Frew Levee Setback and Floodplain Reconnection project, the Tolt River Levee Level of Service Analysis, and the Sediment Management Feasibility Study.

Jay Smith 206.477.4356 | jay.smith@kingcounty.gov

Sediment Management in Tolt River Leveed Reach Feasibility Study

Sediment is accumulating within the lower two miles of the Tolt River which reduces channel capacity and the level of flood containment provided by the levees, and increases the likelihood that the levees are dam- ▶

Natural Resources & Parks continued

aged by overtopping flows. This study will determine the feasibility and appropriate potential sequencing of sediment management efforts in the context of other flood risk mitigation projects both underway and proposed, and in coordination with the local, state and federal regulators that would necessarily permit any sediment removal activities. Data from King County's ongoing sediment monitoring efforts on the Tolt River will inform this feasibility study. The Sediment Management Feasibility Study will be initiated in 2018 and will be conducted in coordination with other projects stemming from the Tolt River Corridor Capital Investment Strategy including the Lower Frew Levee Setback and Floodplain Reconnection project, the Tolt River Levee Level of Service Analysis, and the State Route 203 Feasibility Study.

Jo Wilhelm 206.477.4849 | jo.wilhelm@kingcounty.gov

Shake Mill Left Bank Revetment Reconstruction/Setback

Channel migration threatens the North Fork Bridge on 428th Ave SE where it crosses the North Fork of the Snoqualmie River. Reconstruction of the Shake Mill Left Bank Levee in a setback alignment will limit channel migration and protect the roadway embankment and bridge supports. Project design and permitting will be initiated in 2018 with a target construction date in the summer of 2019.

Gus Kays 206.263.6982 | gkays@kingcounty.gov

San Souci Feasibility Report

Analyze the feasibility of completing a project in the former San Souci neighborhood that improves river and floodplain habitat by removing an existing levee and culverts to improve floodplain connectivity to the Tolt River. The study will also propose options for elevating a section of Tolt River Road to decrease the frequency of roadway inundation. The study is expected to be completed in early 2018.

Scott Muchard 206.477.7875 | scott.muchard@kingcounty.gov
Mary Maier 206.477.4762 | mary.maier@kingcounty.gov

Tolt River Corridor Planning Process and Capital Investment Strategy

A corridor planning process focused on reducing flood and erosion risks, and restoring habitat along the lower six miles of the Tolt River. An outcome of this planning process is the Tolt River Capital Investment Strategy which was approved as policy guidance by the King County Flood Control District in July 2017. This strategy proposes actions in the next six years and beyond to address critical flood and erosion risks and improve habitat.

Teresa Lewis 206.477.6435 | teresa.lewis@kingcounty.gov

South Fork Snoqualmie River Corridor Plan

A corridor management plan to determine the highest priority problem areas for flooding, channel migration,

and levee instability along the South Fork Snoqualmie River in and near North Bend. The planning process includes identifying high risk areas and prioritizing solutions aimed at meeting multiple objectives. An outcome of this planning process is the South Fork Snoqualmie River Capital Investment Strategy which was approved as policy guidance by the King County Flood Control District in July 2017. This strategy proposes actions in the next six years and beyond to address critical flood and erosion risks. <http://www.kingcounty.gov/environment/wlr/sections-programs/river-floodplain-section/capital-projects/south-fork-levee-improvements.aspx>.

Richelle Rose 206.477.4815 | richelle.rose@kingcounty.gov

Middle Fork Snoqualmie River Corridor Plan

A corridor management plan to determine the highest priority problem areas for flooding, erosion and channel migration along the Middle Fork Snoqualmie River. The planning process will identify high risk areas and prioritize solutions aimed at meeting multiple objectives. An outcome of this planning process will be the Middle Fork Snoqualmie River Capital Investment Strategy. This strategy, which is to be completed in 2018, will propose actions in the next six years and beyond to address critical flood and erosion risks.

<http://www.kingcounty.gov/environment/wlr/sections-programs/river-floodplain-section/capital-projects/mid-fork-snoq-corridor.aspx>

Richelle Rose 206.477.4815 | richelle.rose@kingcounty.gov

Snoqualmie River Basin Hydrologic and Hydraulic Study

In response to community concerns, this project conducted an analysis of critical factors affecting flooding conditions in the Lower Snoqualmie valley. Phase 1 evaluated the effects of recent projects above Snoqualmie Falls, including both the upstream flood reduction benefits and any downstream impacts of the Snoqualmie 205 and PSE projects. Phase 2 was a broader investigation into a variety of issues related to basin hydrology, historical trends, data quality, and recent flood events. The study evaluated several other factors influencing flooding identified and prioritized in partnership with the community including land use, forestry practices, increased sedimentation, floodplain storage, and weather patterns including climate change. The Phase 2 analysis and draft report was completed in April 2017 and will be finalized in early 2018. A third Phase will be initiated in 2018 to investigate options for additional gaging to improve flood warning in the Snoqualmie valley.

Chris Ewing 206.477.3027 | chris.ewing@kingcounty.gov

Tolt Pipeline Protection / Winkelman Revetment Reconstruction

Reconstruction of approximately 1,200 linear feet of the Winkelman revetment south of Duvall. The reconstructed revetment will protect Seattle Public Utility's ▶

Natural Resources & Parks continued

Tolt River water supply pipelines, enhance aquatic habitat, and provide improved flood protection, drainage and access to local agricultural properties.

- Design and permitting targeted for completion in 1st quarter 2018

- Construction targeted for summer 2018

<http://www.kingcounty.gov/depts/dnrp/wlr/sections-programsriver-flood-plain-section/capital-projects/tolt-pipeline-protection.aspx>

Craig Garric 206.477.4694 | craig.garric@kingcounty.gov

Snoqualmie at Fall City Corridor Restoration

This project continues detailed reach-scale flood and habitat restoration planning in the Snoqualmie River reach near Fall City. Planning identified four sites where existing King County levees could be removed and new set-back facilities constructed to improve salmon habitat, reduce flood hazards and promote agriculture throughout this reach. The Upper Carlson project listed above is the first project to be implemented in the reach. Three additional large flood facilities may be relocated (set back) in this reach over the next two decades, restoring river access to isolated floodplain areas. Outreach efforts will continue with the agricultural community, landowners, and community members to further prioritize and identify risks and benefits of large-scale restoration projects in this corridor.

Project 1 – Upper Carlson construction was completed in 2014. The second project is scheduled for 2018.

Dan Eastman 206.477.4684 | dan.eastman@kingcounty.gov
Mary Maier 206.477.4762 | mary.maier@kingcounty.gov

Removal or Demolition of Structures on Newly Acquired King County land

There are three anticipated demolitions in 2017; one each in Griffin and Patterson Creeks and one on the Tolt River.

Mary Maier 206.477.4762 | mary.maier@kingcounty.gov

Snoqualmie Tributary Fish Passage Projects

This project will improve fish passage in Canyon Creek and Harris Creek to restore fish access to upstream habitats. Schedule is dependent on availability of funding. Construction of Harris Creek project was completed in 2015. Construction of Canyon Creek project has been delayed for several years.

Mary Maier 206.477.4762 | mary.maier@kingcounty.gov

Clough Creek Sediment Pond

Purchase and demolish a home that is subject to flooding and debris accumulation from Clough Creek, and create a sediment facility on the site. FEMA grant funded by FEMA and the state. Purchase 2015 - Apply for permits 2015; Demolish home, construct sediment pond in 2016-2017

Wendy Kara 206.477.4723 | wendy.kara@kingcounty.gov

Wilderness Rim Flood Reduction Project

The project will undertake several actions to decrease

the impact of flooding around the infiltration pond. Excavate additional volume in and around the infiltration pond, install floodwall/berms, upgrade ditches, and install a new catch basin. Partially funded by a FEMA Pre-Disaster Mitigation grant. Permit and construct in phases from 2016-2017

Wendy Kara 206.477.4723 | wendy.kara@kingcounty.gov

Wilderness Rim #3 FCD

Negotiate purchase and demolition of a fifth frequently flooded house in the Wilderness Rim neighborhood. Funded by a Flood Control District Grant. 2015-2017

Wendy Kara 206.477.4723 | wendy.kara@kingcounty.gov

Snoqualmie Watershed Floodplain Management Buy-outs and Home Elevations

Voluntary acquisition of properties that have structures at risk from flooding and channel migration. Cost-sharing programs to elevate at-risk homes where elevations are an appropriate measure to mitigate flood risks.

Below Snoqualmie Falls:

Teresa Lewis 206.477.6435 • teresa.lewis@kingcounty.gov

Above Snoqualmie Falls:

Richelle Rose 206.263.3178 • richelle.rose@kingcounty.gov

Lower Snoqualmie River Mitigation of Flood Impacts on Agricultural Properties

Technical and financial support for farm pads and elevation of barns above flood levels. Development and implementation of additional solutions to address flood problems on agricultural lands, in coordination with lower valley farmers.

Richelle Rose 206.477.4815 | richelle.rose@kingcounty.gov

Fall City Land Acquisition Strategy & Community Engagement Project

A collaborative stakeholder engagement process focused on land acquisition and management that will result in a report with recommendations for land acquisition, land management and community outreach in the Fall City area developed with the help of community stakeholder group. Seven community stakeholder group meetings have been held monthly from May to November 2017. The report and recommendations will be completed in February 2018.

Heidi Kandathil 206.263.1032 | heidi.kandathil@kingcounty.gov

COMPLETED PROJECTS

Sinnema Quaale Upper Revetment Reconstruction

Reconstruction of approximately 1,000 linear feet of the Sinnema Quaale Upper revetment south of Duvall is complete. The reconstructed revetment protects the Snoqualmie Valley Trail, the regional fiber optic line, and State Highway 203, and provides enhanced aquatic habitat. Follow up construction was completed in summer 2016 and included State Route 203 pavement and guardrail repairs, final resurfacing of the Snoqualmie Valley Trail, and installation of permanent fencing next to the trail. Construction was completed in September 2016. Planting of the site occurred in February 2017. ▶

Natural Resources & Parks continued

<http://www.kingcounty.gov/environment/wlr/sections-programs/riverfloodplain-section/capital-rojects/sinnema-quaale.aspx>

Chase Barton 206.477.4854 | chase.barton@kingcounty.gov

Chinook Bend Restoration Project

The initial phase of this levee removal project began in 2009. In the summer of 2015, we removed a culvert and fish ladder that is no longer needed to access the site. We also removed additional rock from the project site which was exposed as a result of high water events since the project was implemented. This additional rock removal will help ensure that project goals are achieved.

Dan Eastman 206.477.4684 | dan.eastman@kingcounty.gov
Mary Maier 206.477.4762 | mary.maier@kingcounty.gov

Upper Carlson Restoration Project

This project removed an existing King County levee and constructs a set-back facility along Neal Road to improve salmon habitat, reduce flood hazards, and promote agriculture. The project will improve river and floodplain habitat in the Snoqualmie River near Fall City through the restoration of natural riverine processes. It also involves weed control, planting of native vegetation and monitoring and maintenance. Construction was completed in 2014 with additional weed control, planting and monitoring and maintenance continuing for several years. In 2015 and 2016 there was considerable outreach to the local community after several large flood events in 2015. In spring of 2015 and 2016 minor repairs were made to the new flood facility to ensure that it is performing as intended. The design team continues to monitor the site closely and work with adjacent landowners to understand and address any concerns associated with the project.

Dan Eastman 206.477.4684 | dan.eastman@kingcounty.gov
Mary Maier 206.477.4762 | mary.maier@kingcounty.gov

ON-GOING PROJECTS

Small Habitat Restoration Program (SHRP) projects

Work with local property owners and public agencies to design, permit and construct habitat enhancement projects in 2018.

Cindy Young 206.477.4859 | cindy.young@kingcounty.gov

Upper Snoqualmie Weed Watcher Program

Plant enthusiasts, hikers and others who want to help protect our natural areas join the effort to locate (and control) invasive species in the upper Snoqualmie valley and pass areas. The goal is early detection-rapid response noxious weed control in these mountainous open space areas. Seasonal www.kingcounty.gov/environment/animalsAndPlants/noxious-weeds/weed-watchers/midforkweeds.aspx

Sasha Shaw 206.477.4824 | sasha.shaw@kingcounty.gov

Snoqualmie Knotweed Control Projects

King County manages grant-funded projects to control invasive knotweed on public and private riverside

properties along the South Fork, Middle Fork, North Fork and the upper Snoqualmie River above Snoqualmie Falls. Classes and equipment for knotweed control are available for homeowners throughout the county. Seasonal

www.kingcounty.gov/services/environment/animals-and-plants/noxious-weeds/knotweed-control-projects/Snoqualmie-River-knotweed.aspx

Justin Brooks 206.477.0272 | justin.brooks@kingcounty.gov

Purple and Garden Loosestrife Control on the Snoqualmie River

King County Noxious Weed Control Program controls the Class B noxious weeds purple loosestrife, garden loosestrife and spotted knapweed growing along the Snoqualmie River from Snoqualmie Falls to the Snohomish County Line. Seasonal

Ben Peterson 206.477.4724 | ben.peterson@kingcounty.gov

Upper Snoqualmie Cooperative Weed Management Area

King County Noxious Weed Control Program facilitates an ongoing collaborative effort of public, non-profit and private land managers and organizations to strategize, plan and implement invasive weed prevention and management activities in the Upper Snoqualmie Watershed.

Tricia MacLaren 206-214-5871 | tricia.maclaren@kingcounty.gov

Land Conservation Initiative

The King County Land Conservation Initiative is a bold effort underway to “finish the job” on land conservation in King County. Across the County, King County and city partners have identified 62,000 acres of the highest priority conservation lands in five separate categories: (1) urban parks/greenspace, (2) regional trails, (3) river & natural lands, (4) farmlands, and (5) forestlands. The Initiative is a regional effort to permanently protect conservation land to provide benefits to today’s residents and generations to come. The effort is county-wide – from the edge of the Puget Sound, east through urban areas and rural communities, to the farm fields and river valleys at the foot of the Cascade Mountains. In the Snoqualmie Watershed, the County and city partners have identified more than 25,000 acres of high conservation value land. Learn more at <http://kingcounty.gov/services/environment/water-and-land/land-conservation.aspx>.

Michael Murphy 206.477.4781 | michael.murphy@kingcounty.gov

Green Shorelines

Information and guidance for lakeshore homeowners to understand and implement Green Shoreline practices and green dock designs to benefit salmon and water quality.

<http://www.govlink.org/watersheds/8/action/GreenShorelines/default.aspx>

Jason Mulvihill-Kuntz 206.477.4780 | jason.mulvihill-kuntz@kingcounty.gov

Salmon SEEson

Spot spawning salmon in the Lake Washington/Cedar/Sammamish and Green-Duwamish Watersheds each ▶

Natural Resources & Parks continued

fall. Some sites and times have volunteer naturalists on hand; others are self-guided. Check the website for details. September 2017-January 2018 depending on the site. <http://www.govlink.org/watersheds/8/action/salmon-season/default.aspx>
Jason Mulvihill-Kuntz 206.477.4780 | jason.mulvihill-kuntz@kingcounty.gov

Drainage and Water Quality Complaint Investigations

Respond to citizen concerns regarding stormwater runoff and surface water quality problems on both residential and commercial property in the unincorporated areas of King County. <http://www.kingcounty.gov/environment/waterandland/stormwater/problem-investigation-line.aspx>

Drainage Complaint Line 206.477.4811

Minimize Stormwater Pollution

Stormwater runoff comes from small, individual sources in all parts of the watershed. It is a problem that residents can change by stopping small, individual activities that cause pollution and result in large-scale pollution. <http://www.kingcounty.gov/environment/waterandland/stormwater/introduction/stormwater-runoff.aspx>

Neighborhood Drainage Assistance Program (NDAP)

NDAP addresses private flooding, erosion, and sedimentation problems. The NDAP can design and fund capital improvement projects, repair existing drainage systems, and provide technical assistance for questions about construction, maintenance, permits, and storm drainage. <http://www.kingcounty.gov/environment/waterandland/stormwater/neighborhood-drainage-assistance.aspx>

Brian Sleight 206.477.4826 | brian.sleight@kingcounty.gov

Agricultural Drainage Assistance Program (ADAP)

ADAP helps agricultural property owners improve drainage of their fields by providing both technical and financial assistance.

<http://www.kingcounty.gov/environment/waterandland/stormwater/neighborhood-drainage-assistance.aspx>

Brian Sleight 206.477.4826 | brian.sleight@kingcounty.gov

Livestock Program

Support the raising and keeping of livestock to minimize adverse impacts on the environment, particularly on water quality and salmon habitat. This includes help developing a workable solution for handling livestock waste.

<http://www.kingcounty.gov/environment/wlr/sections-programs/rural-regional-services-section/agriculture-program/livestock-programs.aspx>

Rick Reinlasoder 206.477.4810 | rick.reinlasoder@kingcounty.gov

Farmland Preservation Program

The County purchases development rights from agricultural landowner's to permanently protect the land for future farming. It is a voluntary program.

<http://www.kingcounty.gov/environment/wlr/sections-programs/rural-regional-services-section/agriculture-program/farmland-preservation-program.aspx>

Ted Sullivan 206.477.4834 | ted.sullivan@kingcounty.gov

Forestry Program

The County offers education, technical assistance, and economic incentives aimed at retaining forest land for its environmental, social, and economic benefits. <http://www.kingcounty.gov/environment/wlr/sections-programs/rural-regional-services-section/forestry-program.aspx>

Bill Loeber 206.477.4755 | bill.loeber@kingcounty.gov

Wendy Sammarco 206.263.6916 | wsammarco@kingcounty.gov

Current Use Taxation

The Public Benefit Rating System and the Timber Land programs provide incentives to encourage landowners to voluntarily conserve and protect land resources, open space, and timber. In return for preserving and managing resources, the land is assessed at a value consistent with its "current use" rather than the "highest and best use." The reduction in assessed land value is greater than 50 percent and as much as 90 percent for the portion of the land participating in the program. <http://kingcounty.gov/incentives>

Bill Bernstein 206.477.4643 | bill.bernstein@kingcounty.gov

Megan Kim 206.477.4788 | megan.kim@kingcounty.gov

Transfer of Development Rights

The TDR program is a voluntary, incentive-based, and market-driven approach to preserve land and steer development growth away from rural and resource lands into King County's Urban Area. Rural landowners realize economic return through the sale of development rights to private developers who are able to build more compactly in designated unincorporated urban areas and partner cities.

<http://www.kingcounty.gov/environment/stewardship/sustainable-building/transfer-development-rights.aspx>

Hazardous Waste Management

Small businesses can get advice, cash incentives, safety materials, training, and access to free disposal to decrease and safely dispose of hazardous waste materials. Materials are available in multiple languages. <http://www.lhwmp.org/home/BHW/sqg.aspx>

Call the Business Waste Line 206.263.8899

Hazardous Waste Management

Small businesses can become EnviroStars and be recognized for their environmentally friendly practices and commitment. Free business promotion, mentoring and technical assistance. <http://www.lhwmp.org/home/EnviroStars/index.aspx>

Call EnviroStars 206.263.1663

Hazardous Waste Management

Residents can get chemical free gardening advice from Grow Smart Grow Safe, indoor pesticide recommendations, and free disposal services (including home pick-up for qualifying residents) to decrease and safely dispose of hazardous waste materials.

<http://your.kingcounty.gov/solidwaste/facilities/hazwaste.asp>; <http://your.kingcounty.gov/solidwaste/facilities/hazwaste.asp> ▶

Natural Resources & Parks continued

kingcounty.gov/solidwaste/naturalyrdcare/index.asp

Call the Household Hazards Line 206.296.4692

Restoration Project Monitoring and Maintenance

The Ecological Restoration and Engineering Services, Monitoring and Maintenance Program aims to find ways to make projects more cost-effective and reliable through the use of comparative studies and experiments. The program tracks project outcomes and performs maintenance and modifications, as needed, to ensure projects meet their goals.

Josh Latterell 206.477.4748 | josh.latterell@kingcounty.gov

Small Habitat Restoration Program

King County's Small Habitat Restoration Program builds low-cost projects in rural and urban King County that enhance and restore streams and wetlands. Projects occur on both public and private land and are selected based upon the benefit they will provide to the environment and the cost-efficiency with which they can be implemented.

Mason Bowles 206.477.4651 | mason.bowles@kingcounty.gov

Lake Stewardship County Lakes Volunteer Monitoring Program

The Lake Stewardship Program works with trained volunteers to study and monitor the health of King County's small lakes. Volunteer citizen scientists are provided with technical assistance and education regarding a variety of lake-related topics and concerns.

Chris Knutson 206.477.4739 | chris.knutson@kingcounty.gov

Noxious Weed Control Program

King County provides education and technical assistance to landowners and public agencies to help them find the best control options for noxious weeds on each site and to reduce the overall impact of noxious weeds throughout the county. www.kingcounty.gov/weeds

Steven Burke 206.477.9333 | Steven-J.Burke@kingcounty.gov

Lake Weed Watcher Program

Volunteers are trained to survey for aquatic weeds in King County small lakes. The goal is to watch for invasive weeds that are not currently known to occur in King County or that have a very limited distribution, but have the potential to spread and cause damage. Seasonal www.kingcounty.gov/environment/animalsAndPlants/noxious-weeds/weed-watchers/lake-weed-watchers.aspx

Ben Peterson 206.477.4724 | ben.peterson@kingcounty.gov

Knotweed Control on Rivers

Control of invasive knotweed and other invasive plants along the Cedar River, Snoqualmie River and Green River, and Soos Creek and tributaries. On-going, seasonal www.kingcounty.gov/environment/animalsAndPlants/noxious-weeds/knotweed-control-projects.aspx

Steven Burke 206.477.4639 | Steven-J.Burke@kingcounty.gov

PERMITTING & ENVIRONMENTAL REVIEW PLANNING PROJECTS (NEW)

2017-18 Code Updates

Transmit an omnibus zoning code amendment package including amendments to shoreline and critical area regulations and adding sustainable development standards. Shorelines code amendments (KCC 21A.25) and regular zoning code amendments were both transmitted to Council in 2017 and are awaiting Council action. Council adoption expected in 2018

Lisa Verner 206.477.0304 | lisa.verner@kingcounty.gov

Transmit an ordinance updating the zoning code by defining agriculture and including all agricultural activities and related agricultural supportive or dependent uses in the Resource land use table and allowing agricultural supportive uses on non-agricultural lands adjacent to the agricultural production districts. Amendments have been transmitted to Council and are anticipated to be adopted December 4, 2017.

Randy Sandin 206.477.0378 | randy.sandin@kingcounty.gov

2016 King County Comprehensive Plan – DPER Work Plan Items

Item #5: KCC Implementation Study. Work underway. Due 12/31/2019

Item #6: Alternative Housing Study. Work underway. Due 12/31/2020

Item #8: Cottage Housing. Work to start in 2018. Due 12/31/2018

Item #11: Bicycle Network Study. Work to be transmitted to Council in December, 2017

Item #12: Ingress/Egress Study. Work to start in 2018. Due 12/31/2018

Lisa Verner 206.477.0304 | lisa.verner@kingcounty.gov

Customer Green Building Education

Quarterly outreach public meetings for residents of unincorporated KC on various green building techniques which can be incorporated into their new building and redevelopment plans, per commitment in 2015 SCAP. Throughout 2017 and 2018

Lisa Verner 206.477.0304 | lisa.verner@kingcounty.gov

Construction and Demolition Waste Diversion Ordinance

Transmit an ordinance requiring construction and demolition waste diversion for unincorporated King County. Includes research and development of an ordinance requiring contractors and DIY builders to re-use, recycle and otherwise divert from the landfill the waste materials generated by their building projects in unincorporated KC. A draft ordinance has been reviewed by DPER and by Green Tools (Kinley Deller); details regarding how to best achieve compliance are under review. Transmittal to Council is anticipated in 1st Quarter 2018.

Lisa Verner 206.477.0304 | lisa.verner@kingcounty.gov

PLANNING PROJECTS (COMPLETED)

2016 King County Comprehensive Plan Update

The 2016 update was the fifth major review of the King County Comprehensive Plan. During this four-year review cycle, substantive changes to policies, land use designations and the Urban Growth Area boundary were proposed. Adopted by King County Council in December 2016.

PERMITTING PROJECTS (COMPLETED)

Landslide Hazard Mapping

Completed work on updating landslide hazard mapping for all of unincorporated King County outside of the Forest Production District. 3rd Quarter 2016.

ACCELA Access

Improved functionality of the department's permit tracking software, Accela Automation. Priorities include improving citizen access, reporting, and ultimately on-line permitting. Phase I completed December 2016.

PLANNING PROJECTS (ONGOING)

Marijuana Legislation

Efforts continue to refine, administer and implement King County's recently amended marijuana regulations.

Jake Tracy 206.263.0875 | jtracy@kingcounty.gov

PERMITTING PROJECTS (ONGOING)

Online Permitting

Launched online submittal and issuance of residential mechanical permits Feb. 2016 with credit card payment via Accela. (Update: 80% of all mechanical permits filed with DPER were received electronically within the first 4 months after the launch.)

John Backman 206.477.0447 | john.backman@kingcounty.gov

MyBuildingPermit.Com (MBP)

King County will join MBP in 2017 enabling additional online permit submittals and credit card payments. This MBP launch will contain 3 permit types - mechanical, registered, and basic plans. Other permit types will be phased in over time.

John Backman 206.477.0447 | john.backman@kingcounty.gov

Raging River Quarry

Review of proposed quarry expansion and review of ongoing operations. Periodic review completed September 2017. Proposed expansion currently on hold.

Randy Sandin 206.477.0378 | randy.sandin@kingcounty.gov

PROSECUTING ATTORNEY

Office Overview

- The King County Prosecuting Attorney's Office employs over 500 people, including 210 attorneys.
- The Criminal Division represents the state and the county in criminal matters in the King County District

and Superior Courts, the state and federal courts of appeal, and the Washington and U.S. Supreme Courts. The Criminal Division is responsible for prosecuting all felonies in King County and all misdemeanors in unincorporated areas of King County.

- The Civil Division is the County's law firm. It serves as legal counsel to the Metropolitan King County Council, the County Executive and all Executive agencies, the Superior and District Courts, the County Assessor, independent boards and commissions, and some school districts. The division litigates cases on behalf and in defense of its clients, provides legal advice and assistance on all sorts of questions and projects, and issues formal written legal opinions from time to time.

- The Family Support Division is an integral part of the federal and state child support system. The deputies establish paternity for children born out of wedlock, ensure support obligations are enforced, and modify support amounts when necessary.

Emerging Programs and Policy Overview

- 180 Diversion Program –diverts over 350 King County youth per year since 2011. In collaboration with community leaders, the PAO host motivational workshops for youth arrested for committing a misdemeanor violation. The purpose of the workshop is to help the youth identify their strengths, weaknesses, and provide tools to assist in making better decisions.

- Truancy Dropout Prevention Program—over 1200 petitions against truant youth are filed in juvenile court. In an attempt to reengage the youth and their family, the KCPAO hosts reengagement workshops to help identify what is preventing school attendance and with the help of the youth, their parent or guardian, and the school representative, an individualized education reengagement plan is developed.

- LEAD (Law Enforcement Assisted Diversion)—is a law enforcement diversion program that allows police officers to divert those engaged in a minor criminal act into services intended to address a drug addiction, mental health concern, homelessness, or some other root cause that informed their decision to engage in criminal conduct.

- Decriminalized DWLS 3 Cases—in August of 2014, the KCPAO modified its policy on the prosecution of DWLS 3 cases and the Office no longer pursues DWLS 3 cases.

In addition, upon the decision to decriminalize these cases by making them a traffic infraction, we recalled all outstanding warrants related to a DWLS 3 matter.

- FIRS (Family Intervention Reconciliation Services) are a youth diversion program that will divert youth who have been arrested due to a domestic violence interaction with a parent or sibling. In looking at juvenile data, DV cases make up 17% of the juvenile unit caseload and of that 17%, 30% involve youth of color. Instead of prosecuting these cases, FIRS is a crisis intervention strategy. The PAO is in the process of ▶

Prosecuting Attorney continued

modifying policy and practice to divert these cases to a crisis intervention program that will address the needs of the youth and their family.

- CJP (Community Justice Project) is a civil remedy project in which the PAO uses its municipal authority in under-served marginalized communities in unincorporated King County (White Center and Skyway) to address blighted properties that have become crime magnets. In partnership with the Department of Permitting and Environmental Services, the King County Sheriff's Office, and other King County agencies, the goal of the PAO is to prioritize safety issues identified by the community to increase public safety in underserved communities using civil remedies as an enforcement tool instead of the traditional criminal prosecution.

Community Engagement

The PAO routinely participates in public speaking events in which a discussion about criminal justice reform and the impact on communities with a focus on those communities most impacted by crime. The community engagement strategy includes presentations to the community discussing the emerging trends impacting the criminal justice system and PAO criminal justice reform strategies. Emerging trends that the PAO covers in community presentations include:

- Exclusionary School Discipline Practices
- Recidivism
- Racial and Ethnic Disproportionality
- Mental Health Reform
- Sentence Reform
- Drug Reform
- Prison Reform
- More Education/Vocational Opportunities
- More Mental Health Services
- Creation of a Sustainable Reentry System
- Remove unnecessary barriers to reentry

Administration / Human Resources

206.477.1200 | 206.296.9013 FAX

Civil Division

206.477.1120 | 206.296.0191 FAX

Criminal Division

206.296.9000 Seattle | 206.296.0955 FAX

206.205.7400 Kent | 206.205.7475 FAX

206.477.3044 Juvenile Section | 206.296.8869 FAX

District Court Unit

206.477.1290 Seattle - West Division | 206.296.2901 FAX

206.477.2060 MRJC - South Division | 206.205.6145 FAX

206.477.3150 Redmond - East Division | 206.296.3643 FAX

Economic Crimes Unit

206.477.3733 | 206.296.9009 FAX

Family Support Division

206.296.9020 Seattle | 206.296.9581 FAX

206.296.9595 Kent | 206.296.8501 FAX

Media / Press Information

206.477.9169 Whitney Keyes, Communications Director

206.247.2446 Mobile | 206.296.9013 FAX

Press Only Media Inquiries: mediainquiryprosecutor@kingcounty.gov

Northeast District Court

206.477.3150 | Email: ProsecutorNE@kingcounty.gov

Protection Orders

206.477.1103 Seattle | 206.205.8329 FAX

206.477.3757 Kent | 206.205.7410 FAX

206.205.7012 Redmond / Northeast District Court

206.296.0592 FAX

Public Disclosure Requests

King County Prosecuting Attorney

ATTN: Public Disclosure Unit

King County Courthouse

516 3rd Avenue, Room W400

Seattle, WA 98104

Printable copy of the Public Records Request Form.

206.477.3296 Kristie Johnson, Public Records Officer

School Violence Prevention

206.477.3044 Juvenile Section

Truancy

206.477.4336, Samaneh Alizadeh, Deputy Prosecuting Attorney

Victim Assistance

206.477.3742 Seattle | 206.205.6104 FAX

206.206.477-3757 Kent | 206.205.7475 FAX

206.477.3035 Juvenile Section, Seattle | 206.296.8838 FAX

PUBLIC DEFENSE

The Department of Public Defense provides legal counsel and representation to indigent persons in criminal, juvenile, involuntary treatment, dependency and civil contempt legal proceedings in King County Superior and District Courts and Seattle Municipal Court.

Melanie Oberlander 206.477.9247 | Melanie.oberlander@kingcounty.gov
Main Office: 206.296.7662

**PUBLIC HEALTH, SEATTLE & KING COUNTY
Community Health Services****Health insurance access and outreach**

Coordinate with partners on communication, outreach and enrollment activities to inform residents of improved access to government provided or subsidized health insurance as a result of federal healthcare reform.
<http://www.kingcounty.gov/depts/health/locations/health-insurance.aspx>

Daphne Pie 206.263.8369 | daphne.pie@kingcounty.gov

ON GOING**Prevention****Communicable diseases, Public Health laboratory, Medical Examiner Office and vital statistics**

Conduct surveillance and investigation for all communicable diseases. Includes program and/or clinical services in HIV/AIDs, sexually transmitted diseases, tuberculosis, child vaccine distribution, immunization promotion, and public health laboratory services. ▶

Public Health continued

Provides birth and death certificates and review of causes of death in King County.

<http://www.kingcounty.gov/depts/health/communicable-diseases.aspx>

Donna Allis 206.291.4517 | donna.allis@kingcounty.gov

Chronic Disease & Injury Prevention

Chronic disease & injury prevention, women’s health, tobacco

Chronic disease services including tobacco and obesity prevention, screening services for breast, cervical and colon cancer, diabetes and asthma services through community health workers, and violence and injury prevention services.

<http://www.kingcounty.gov/depts/health/chronic-diseases.aspx>

Maríel Torres Mehdipour 206.477-8620 | maríel.torresmehdipour@kingcounty.gov

Jail Health Services

Inmate services

Provide necessary medical, psychiatric, and dental services to detained persons in correctional facilities in the King County correctional facilities in Kent and Seattle so inmates receive constitutionally guaranteed health services that meet community and professional standards of care.

Bette Pine 206.263.8284 | bette.pine@kingcounty.gov

Community Health Services

Healthcare services

Provide center based and regional services which may include WIC, Family planning, primary care, maternity support services, oral health, refugee health, pharmacy, home nursing, healthcare access assistance, healthcare for the homeless, school-based health, and childcare health and other services.

<http://www.kingcounty.gov/depts/health/locations.aspx>

Jerry DeGriek 206.263.1330 | jerry.degriek@kingcounty.gov

Preparedness Section

Preparedness

Support preparedness efforts of healthcare organizations, local governments, businesses, community organizations, and the public to respond and recovery quickly from all hazards including weather incidents, earthquakes, disease outbreaks, and acts of terrorism.

<http://www.kingcounty.gov/depts/health/emergency-preparedness.aspx>

Carina Elsenboss 206.263.8722 | carina.elsenboss@kingcounty.gov

Environmental Health

Environmental public health services

Permitting and inspection services for businesses and individuals, including food business, food worker, solid waste, plumbing and gas piping, drinking water, and septic systems. Promote health and well-being of all county residents with equity and social justice work, healthy community planning, climate change, local hazardous waste, lead and toxics, veterinary services and zoonotic disease programs.

<http://www.kingcounty.gov/depts/health/environmental-health.aspx>

Ngozi Oleru 206-263-8476 | ngozi.oleru@kingcounty.gov

Emergency Medical Services

Assure high quality emergency medical services

Coordination of pre-hospital emergency services and provision of regional leadership through partnerships with cities and fire departments to assure the uniformity of medical care and dispatch across jurisdictions, consistency and excellence in training, and medical quality assurance. Focus areas include Medical Direction, EMS Training, Community Programs, Strategic Planning and Data Management, and Administration including Regional Leadership and Financial Management.

<http://www.kingcounty.gov/depts/health/emergency-medical-services.aspx>

Michele Plorde 206.263.8579 | michele.plorde@kingcounty.gov

KING COUNTY SHERIFF’S OFFICE

The King County Sheriff’s Office consists of over 1,100 commissioned and professional staff employees who provide services to unincorporated King County and our contract partners. These services include 9-1-1 dispatch, community patrol and emergency response, criminal investigations, traffic safety, transit police, search & rescue, sheriff’s civil function, concealed weapons licensing, fingerprinting, records, etc.

The Sheriff is the chief executive officer and conservator of the peace of the county. The mission of the King County Sheriff’s Office is to be a trusted partner in fighting crime and improving the quality of life for our residents and guests. We strive to achieve our mission by our work on the following goals: a) Develop and sustain public trust, value and support. b) Reduce crime and improve the community’s sense of security. c) Improve traffic safety by reducing impaired and unsafe driving behaviors and traffic collisions. d) Recruit, hire, train and promote the best people, reflective of the community we serve, to provide high quality, professional and responsive service. e) Provide facilities, equipment and technology that support achievement of our mission. f) Prepare to respond to and resolve critical incidents and disasters.

Most of the services you receive are deployed out of one of the Sheriff’s Office Precincts. Precinct supervisors work closely with their deputies and detectives to identify crime trends, hot-spot locations and the repeat offenders that are most damaging to your community. They then develop investigative plans to investigate and prosecute those offenders in a coordinated manner with other agencies and the prosecuting attorney’s office. Similarly, areas with high numbers of traffic collisions are focused on, along with impaired and unsafe driving behaviors, to reduce the harm that results from collisions. ▶

Sheriff's Office continued

Deputies are assigned to fairly consistent areas. This allows them to become familiar with residents, businesses, schools, and the overall community in their assigned patrol areas. They are expected to build relationships and learn the particular problems in an area or neighborhood, to include their focus on crime trends, traffic safety and quality of life issues. Bottom line, we want people to be and feel safe while at home, work, school and while traveling!

Our Precincts are referred to as Precincts #2, #3, & #4...or North, Southeast, and Southwest, respectively. Precinct #2 is in Sammamish City Hall, Precinct #3 is in the Hicks Raburn Precinct located in Maple Valley, and Precinct #4 is in downtown Burien.

On behalf of the men and women of the King County Sheriff's Office, thank you for the honor of serving you.

Mitzi Johanknecht, King County Sheriff

Command Structure

Pct. #2 – North Precinct Robin Fenton 206.263.9133

Pct. #3 – Southeast Precinct Major Troy Olmsted 206.477.6446

Pct. #4 – Southwest Precinct Major Bryan Howard 206.477.2200

Other:

Internal Investigations 206.263.2525

Communications Center 911 (Emergency)

206.296.3311 (Non-emergency)

King County Office of Emergency Management 206.296.3830

King County Road Services Hotline 206.477.8100

TRANSPORTATION

Road Services Division

Drainage

NE Woodinville Duvall Road Culvert Replacement - COMPLETE

Project is located 1,700 feet west of the West Snoqualmie Valley Road NE intersection. Five-day full road closure planned. Construction summer 2017

Contact: community.relations@kingcounty.gov or 206.477.3840

428 Avenue SE north of SE 92 Street Culvert Replacement

Replace two failing 60 inch diameter cross culverts with a new large concrete box culvert.

Four-week full road closure planned. Construction 2018 or 2019

Contact: community.relations@kingcounty.gov or 206.477.3840

SE Reinig Road east of #41502 Culvert Replacement

Replace cross culvert with a new fish passable concrete box culvert. Four-week full road closure planned. Construction summer 2018 or 2019

Contact: community.relations@kingcounty.gov or 206.477.3840

SE Issaquah Fall City Road east of 295 Avenue SE Culvert Replacement - COMPLETE

Replace two cross circular cross culverts. Daytime one lane road closures during two week construction time. Construction summer 2017

Contact: community.relations@kingcounty.gov or 206.477.3840

NE Old Cascade Highway West Approach Culvert Replacement

Replace deteriorated cross culvert with a new concrete box culvert in Skykomish area. Construction 2019

Contact: community.relations@kingcounty.gov or 206.477.3840

Pavement Preservation Program (Road Resurfacing)

Locations for 2018 are still being finalized. Check website for updates www.kingcounty.gov/paving

Overlay

- NE Ames Lk Rd – From SR-202 to NE 27th Dr – Spring/summer 2017 – COMPLETE
- SE Mount Si Road from House #43727 to 480th Avenue SE

Bituminous Surface Treatment (BST – summer 2017)

- W. Snoqualmie Valley Rd NE – From NE Novelty Hill Rd to NE 80th St - COMPLETE
- NE Ames Lk Rd – From NE 27th Drive to W Snoqualmie Valley Rd NE - COMPLETE
- SE Issaquah Fall City Rd – From SE Duthie Hill Rd to 328th Ave SE - COMPLETE
- 328th Ave SE / 328th Way SE – From SE Issaquah Fall City Rd to Smith Parker Bridge – COMPLETE

Outreach:

Tristan Cook 206-477-3842 | tristan.cook@kingcounty.gov

Roadway Reconstruction

Middle Fork Snoqualmie River Road (federal project) - COMPLETE

Federal project is reconstructing 9.7 miles of road; the last half mile is within the USFS's property. This project is a partnership between the FHWA, the USFS and King County to provide a paved two-lane road with improved alignment, width and grade. The County was responsible for the acquisition of property, easements, SEPA compliance and the Shorelines permit.

Contact: community.relations@kingcounty.gov or 206.477.3840

Old Cascade Highway (Miller Bridge East and West)

Drainage and pavement improvements on Old Cascade Highway and construct a turnaround on the highway at the west bank of the Miller River.

Contact: community.relations@kingcounty.gov or 206.477.3840

Bridge

- Baring Bridge near Skykomish COMPLETE (ahead of schedule) Redeck, timber sills, and scour repair – summer 2017
- Cherry Creek Bridge Repair expansion joints – winter 2017 COMPLETE
- North Fork Bridge (Road Services/Flood Control

Transportation continued

- District) Scour repair – Summer 2017 COMPLETE
- Raging River Bridge (Road Services/Flood Control District) Scour repair – Summer 2017 COMPLETE
- Skykomish River Bridge - COMPLETE

Repainting the existing steel girders, repairing the deck where needed, repairing expansion joints, redecking with structural concrete, and improving the bridge rails to current standards. Construction will begin June 2017. This project is partially funded by a FEMA grant.

Safety Improvement

SE David Powell Road – Early Action Flood Project – Road Services/WLRD COMPLETE
This project is funded by the King County Flood Control District to repair damage to the sole access roadway from a chronic slope failure. Project requires one lane closure during approximately 3 weeks of construction, summer 2017

Outreach:
Tristan Cook 206-477-3842 | tristan.cook@kingcounty.gov

SE Fish Hatchery Road – Early Action Flood Project – Road Services/WLRD COMPLETE

This project is funded by the King County Flood Control District to repair damage to roadway from river embankment scour. Located approximately one mile east of State Route 202, project requires a full closure during approximately 2-3 weeks of construction in summer of 2017.

SE David Powell Road Repair

This project will repair an existing failing retaining wall and extend a Mechanically Stabilized Earth wall to prevent undercutting of the riverbank and the roadway.

Outreach:
Tristan Cook 206-477-3842 | tristan.cook@kingcounty.gov

COUNTYWIDE PROJECTS AND PROGRAMS

Pavement Preservation Program (Road Resurfacing)
Locations for 2018 are still being finalized. Check website for updates www.kingcounty.gov/paving

High Collision Safety

Locations for 2018 are still being finalized. Work includes High Friction Surface Treatment and signal, sign, marking and sight line improvements.

ONLINE RESOURCES

24/7 Road Helpline

In unincorporated King County, contact us for help with road maintenance and traffic safety issues, such as downed stop signs, signals that are out or trees over the roadway — 24 hours a day, seven days a week.

206.477.8100 | 800.527.6237 | maint.roads@kingcounty.gov

My Commute

Travel tools and resources for the greater Puget Sound

area – Commuting resources – road closures, restrictions, and traffic cameras.

www.kingcounty.gov/mycommute
webteam.roads@kingcounty.gov

Road Alert

Find travel alert information about road closures or conditions that have a significant impact on roads in Unincorporated areas of King County. Email subscription services available.

www.kingcounty.gov/roadalert • webteam.roads@kingcounty.gov



Alternative Formats Available

206-477-4700 TTY Relay: 711



The Local Service Initiative proposes a new Department that:

- Creates cabinet-level representation
- Responds to local needs
- Improves service delivery

Creation

The proposed Department of Local Services is a comprehensive effort to improve the delivery of efficient, effective, and timely municipal services to the nearly 250,000 residents of unincorporated King County. In consultation and partnership with the Council, whose members directly represent residents in the unincorporated areas, we are creating a best-run *local* government to accompany the Executive's best-run *regional* government.

Collaboration

We are aligning Executive-branch agencies by collaborating, sharing resources, and creating service partnerships that reinforce mutual accountability. This coordinated approach will improve local service in King County and benefits the County as a whole.

Customer-Driven

We work every day to improve the lives of the people we serve. That means consistently monitoring and evaluating our performance to ensure we deliver value to our customers. By focusing on our customers' experience, and integrating continuous improvement methods into our work, our employees will remove roadblocks and achieve results that make a difference.

Connection

Unincorporated area residents deserve one, dedicated Executive-branch partner who listens, collaborates and works to advance their interests. We are working to ensure there is always a place at the table for more voices to help inform how we deliver critical services. We are committed to problem-solving and taking concrete actions to keep our communities connected and running strong. The Department of Local Services will be the conduit that drives enhanced communication between Executive-branch agencies and unincorporated area community members.



Share your thoughts

Email asklocalservices@kingcounty.gov