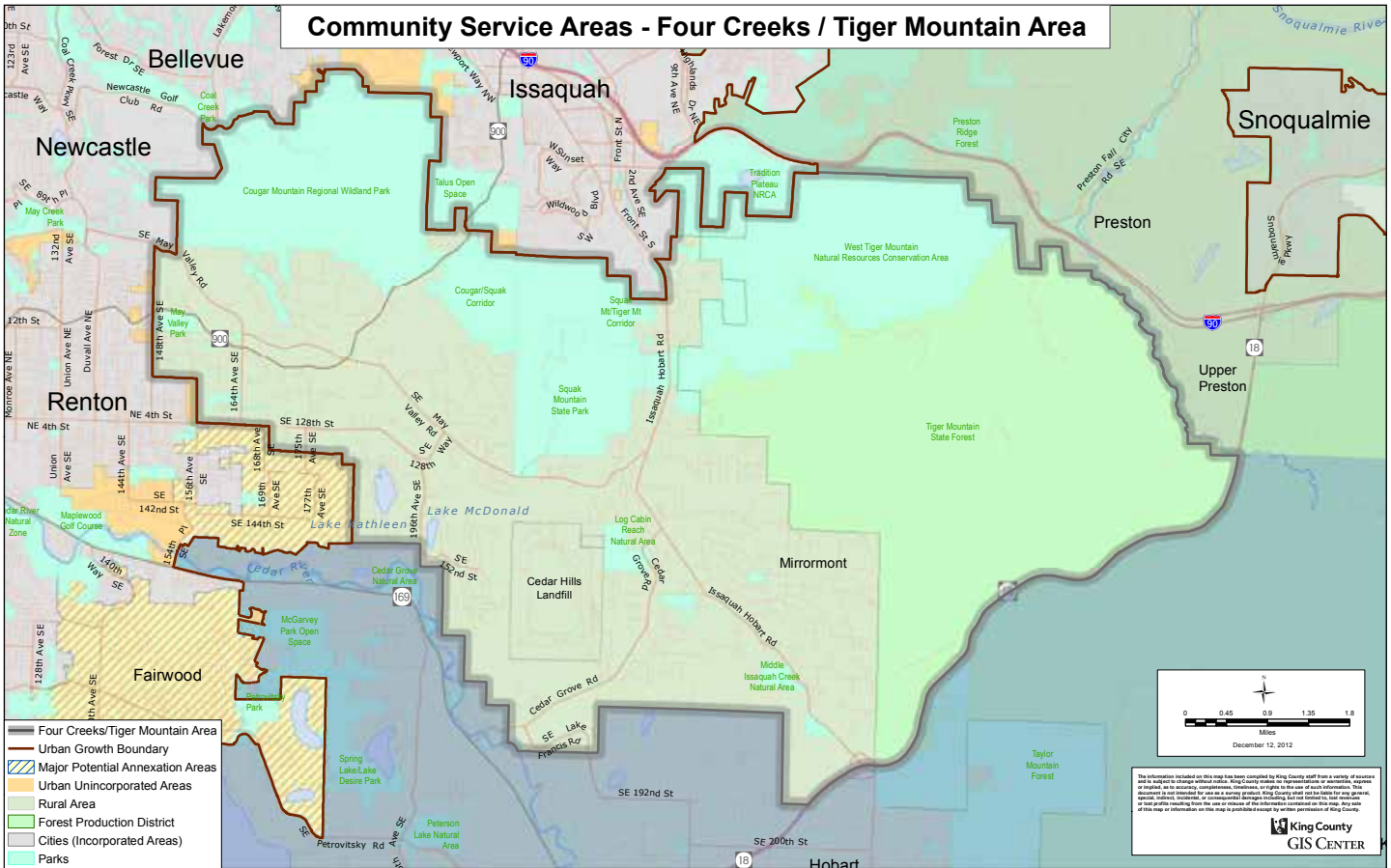


**2018**

**FOUR CREEKS-TIGER MOUNTAIN CSA  
Work Plans**



**King County**



**FOUR CREEKS/TIGER MOUNTAIN AREA** lies east of the cities Renton and Newcastle and east and south of Issaquah and contains the May Valley Basin and the foothills of the Cascade Range, including Cougar Mountain Regional Wildland Park, Squak Mountain State Park and Tiger Mountain State Forest.



**King County**  
**Department of**  
**Natural Resources and Parks**  
 201 South Jackson Street, Suite 700  
 Seattle, WA 98104

[kingcounty.gov/exec/community-service-areas](http://kingcounty.gov/exec/community-service-areas)

Alan Painter, Community Service Area Manager | 206.477.4521 | [alan.painter@kingcounty.gov](mailto:alan.painter@kingcounty.gov)  
 Bong Sto. Domingo, Community Liaison | 206.477.4522 | [bong.stodomingo@kingcounty.gov](mailto:bong.stodomingo@kingcounty.gov)  
 Marissa Alegria, Community Liaison | 206.477.4523 | [marissa.alegria@kingcounty.gov](mailto:marissa.alegria@kingcounty.gov)

---

**W**elcome to the King County work plan for the Four Creeks/Tiger Mountain Community Service Area of King County.

Contained in this document are the current work plans, initiatives, ongoing projects, and completed projects of King County departments and separately elected offices available in your community. We include contact information for the projects in case you would like further details on specific projects or initiatives.

King County's Community Service Area (CSA) program brings representatives of King County government to residents of unincorporated King County. In addition to the following work program, the CSA team hosts a series of town meetings throughout unincorporated King County as well as offers small grants to community organizations serving residents of unincorporated King County.

For more information visit the CSA web site at: <http://www.kingcounty.gov/exec/community-service-areas.aspx>. You can find more information about King County at the County's web

site: [www.kingcounty.gov](http://www.kingcounty.gov)

Specific information about initiatives lead by the King County Executive including the following priority initiatives: becoming the nation's best-run government; confronting climate change in King County; building equity and opportunity for all; and strengthening our regional transit mobility can be reached at the Executive's web site: <http://kingcounty.gov/elected/executive/constantine.aspx>.

Your community is represented on the King County Council by Councilmember Reagan Dunn (District 9 - Fairwood). You can access your councilmember at <http://www.kingcounty.gov/council.aspx>

Thank you for your interest in the many projects and initiatives underway in your community.



Alan Painter  
Manager  
King County's Community Service Area Program





## ASSESSOR'S OFFICE

### Property Assessments

#### 2018 Property Valuation and Tax Update

- Provide property tax relief to qualified King County property owners.
- Provide proactive workshops on property tax relief programs, with an emphasis on senior citizen property tax exemptions. Assessor's staff will be available at these workshops to help citizens understand the requirements for the property tax relief, and to register them for the programs, if they qualify.
- Provide detailed valuation and property tax updates for property owners and residents in the unincorporated community service areas.
- Provide physical inspection schedules for all unincorporated community service area neighborhoods and increase public education on the Washington State revenue system at unincorporated community service area community meetings.

**Assessor.info@kingcounty.gov | 206.296.7300**

## COMMUNITY & HUMAN SERVICES

### Community Services Operations Programs

#### Civil Legal Services

Information about civil legal services is available by calling 2-1-1 for non-urgent and non-criminal situations. In case of emergency, call 9-1-1.

Legal assistance is provided to help people in situations including but not limited to:

- legal issues relating to domestic violence or sexual assault
- housing-related legal issues
- people from marginalized communities such as refugees or immigrants
- people living on low incomes
- youth needing legal assistance
- help accessing benefits.

**Scott Ninneman 206.263.9072 | scott.ninneman@kingcounty.gov**

#### Domestic Violence (DV) Services

Information about domestic violence (DV) services is available by calling 2-1-1 for non-urgent inquiries, or at <http://www.kingcounty.gov/depts/prosecutor/victim-community-support/domestic-violence.aspx>. In case of emergencies including if you or a loved one is in danger, call 9-1-1. Survivors of domestic violence and their families may also contact any DV agency in the county for assistance.

**Scott Ninneman 206.263.9072 | scott.ninneman@kingcounty.gov**

#### Older Adults Services

Information about services for older adults and their caregivers is available by calling Community

Living Connections at 206.962.8467 or toll free at 1.844.348.5464

#### Sexual Assault (SA) Services

Information about sexual assault (SA) services is available by calling 2-1-1 for non-urgent inquiries. In case of an emergency call 9-1-1. Treatment is available for all King County victims of sexual assault at: Harborview Medical Center/Center for Sexual Assault and Traumatic Stress, located at 401 Broadway, Seattle, WA 98104, 206.744.1600; King County Sexual Assault Resource Center, 200 Mill Avenue S., Ste 10, Renton, WA 98057, phone number: 425.226.5062 (Monday through Friday) or the 24 hour Sexual Assault Resource line: 1.888.998.6423.

**Scott Ninneman 206.263.9072 | scott.ninneman@kingcounty.gov**

#### Homeless and Housing Programs

Homeless Housing: Homeless Prevention Services and other assistance.

<http://kingcounty.gov/depts/community-human-services/housing.aspx>

**Kate Speltz 206.263.9084 | kate.speltz@kingcounty.gov**

**Hedda McLendon 206.263.8965 | hedda.mclendon@kingcounty.gov**

#### Coordinated Entry for All

Clear path to housing for people experiencing homelessness. [www.kingcounty.gov/cea](http://www.kingcounty.gov/cea) | 206-328-5796 | [cea@kingcounty.gov](mailto:cea@kingcounty.gov)

#### Youth and Family Homelessness Prevention Initiative

Client-centered case management and flexible funds to youth ages 12-24 and families with youth who are at imminent risk of homelessness.

<http://kingcounty.gov/beststarts>

**Kim Dodds 206.477.7884 | kimberly.dodds@kingcounty.gov**

#### Major Home Repair

The Housing Repair Program services low-to-moderate income owner occupied residences (repairs, weatherization and disability accommodations). Program objective is to maintain housing stock for low-to-moderate income homeowner. Keeping this housing stock in a safe, decent and habitable condition. To help seniors and veterans age gracefully in place, with the goal to prevent future homelessness.

<http://www.kingcounty.gov/HousingRepair>

**Clark Fulmer 206.263.9087 | clark.fulmer@kingcounty.gov**

#### Community Development

Community Development: Capital projects funded for activities to revitalize neighborhoods, improve living conditions for low to-moderate income residents and provide microenterprise assistance to income qualified entrepreneurs. Technical assistance services to help agencies build capacity in applying for grant funding to expand and/or improve their service delivery.

<http://www.kingcounty.gov/cdbg>

**Kathy Tremper 206.263.9097 | kathy.tremper@kingcounty.gov ▶**

## Community & Human Services continued

### Housing Capital Projects

Capital Projects: Project financing to qualified non-profit development organizations or housing authorities in order to provide affordable housing for low-income and vulnerable populations throughout King County.

**Quinnie Tan 206.263.5873 | quinnie.tan@kingcounty.gov**

**Jackie Moynahan 206.477.7524 | jackie.moynahan@kingcounty.gov**

### Employment & Education Resources

#### Adult Programs & Services

Employment and training services for unemployed and dislocated workers.

**Nancy Loverin 206.263.1394 | nancy.loverin@kingcounty.gov**

a) WorkSource Tukwila – A one-stop employment affiliate focused on serving youth aged 16-24 with their employment and education needs. The site also includes King County Career Connections, King County Homeless Employment Program and King County Jobs Initiative. For more information go to: <http://www.kingcounty.gov/eeer>

**Jamalia Jones 206.477.5581 | jamalia.jones@kingcounty.gov**

b) KC Jobs Initiative – Helps adults ages 18 and older who are currently or were previously involved in the criminal justice system for adults on basic food and needs assistance to get training and living-wage jobs. <http://www.kingcounty.gov/depts/community-human-services/employment-and-education-resources/adult-services.aspx>

**Stephanie Moyes 206.263.9064 | stephanie.moyes@kingcounty.gov**

c) Career Connections – Partners with homeless housing agencies to assist homeless families and veterans with education and employment in order to reach independence. Services may include internet services, tuition and book assistance, transportation assistance, tools and uniform assistance.

**Stephanie Moyes 206.263.9064 | stephanie.moyes@kingcounty.gov**

d) Basic Food Employment & Training (BFET) program – Assists low income adults who are receiving food assistance with their employment and training needs. Services may include help with tuition, job placement and support services.

**Stephanie Moyes 206.263.9064 | stephanie.moyes@kingcounty.gov**

#### Youth and Family Programs/Services

Employment, training and education for youth at risk

a) Youth Source – Education, employment and training services for young people ages 16-24 years who have dropped out of school. YouthSource is located in Tukwila. <http://www.kingcounty.gov/depts/community-human-services/employment-and-education-resources/youth-services.aspx>

**Jennifer Hill 206.263.9024 | jennifer.hill@kingcounty.gov**

**Jamalia Jones 206.477.5581 | jamalia.jones@kingcounty.gov**

b) Youth & Family Services Program – Friends of

Youth serves eligible youth and their families living in the service area.

**Stephanie Moyes 206.263.9064 | stephanie.moyes@kingcounty.gov**

c) Juvenile Justice Program – Education and employment services for justice-involved youth are available regionally.

**Zac Davis 206.263.4162 | zdavis@kingcounty.gov**

#### KC Veterans Program

If you are in need of veterans' resources, please contact the King County Veterans Information and Assistance Call Center at 1-877-904-VETS (8387) or by going to: <http://www.kingcounty.gov/depts/community-human-services/veterans.aspx>

**Bryan Fry 206.477.6996 | Bryan.Fry@kingcounty.gov**

#### Veterans, Seniors and Human Services Levy

The Veterans, Seniors and Human Services Levy (VSHSL) was renewed in November 2017 and is a county property tax generating about \$52 million annually, supporting veterans and military servicemembers and their respective families; seniors and their caregivers; and vulnerable populations in King County by funding capital facilities and regional health and human services to promote housing stability, healthy living, financial stability, social engagement and health and human services system improvements and system access throughout King County. Additional information on the VSHSL can be found on the website: [www.KingCounty.gov/VSHSL](http://www.KingCounty.gov/VSHSL)

**Leo Flor 206.477.4384 | Leonardo.Flor@kingcounty.gov**

#### Developmental Disability Division

##### Developmental Disabilities Programs and Services

Programs and services support children prenatal to five and individuals with developmental delays/ disabilities and their families to lead full, integrated, and productive lives: <http://www.kingcounty.gov/ddd>

- Prenatal to Five
  - Promoting Development—creating a comprehensive system for screening developmental milestones with all children prenatal to five and linking families with appropriate referrals.
  - Social-Emotional Wellbeing—supporting close and secure relationships for all children, prenatal to 5 years of age with caregivers and to explore the environment and learn—all in the context of family, community, and culture—with a system of promotion, prevention and treatment, when needed.
  - Early Support for Infants and Toddlers—Individualized “birth-to-three” services to promote optimal development for children with developmental delays or disabilities and their families. Call Family Health Hotline to refer at 800.322.2588.
- School-to-Work Program - assists high school students to leave school with a job and a seamless ▶

## Community & Human Services continued

transition to adult life

- Employment Services - supports adults with individualized pathways to employment so they may obtain competitive jobs
- Community Inclusion Services – assists adults to develop meaningful relationships that promote integration into their communities
- Behavioral Support Team Program – provides intensive wrap-around services for children and youth ages 3-17
- Community Information and Outreach Services - supports information, referral, and outreach to individuals and families

**Magan Cromar 206.263.9045 | magan.cromar@kingcounty.gov**

## Behavioral Health and Recovery Division

1. Mental health (24-hour crisis outreach, treatment services) <http://www.kingcounty.gov/bhrd>

Suicide Prevention:

- a) 1.866.4CRISIS
- b) 206.461.3219 TDD
- c) 1.800.273.TALK (8255)

**King County Crisis and Commitment Services: 206.263.9200**

**Jim Vollandroff 206.263.8903 | jim.vollandroff@kingcounty.gov**

2. Substance use disorder (inpatient and outpatient services) <http://www.kingcounty.gov/bhrd>

**Jim Vollandroff 206.263.8903 | jim.vollandroff@kingcounty.gov**

Washington Recovery Helpline 24-hour help with mental health, substance use, and problem gambling:

**1.866.789.1511 | www.WaRecoveryHelpLine.org**

## King County Mental Illness and Drug Dependency (MIDD)

King County's Mental Illness and Drug Dependency (MIDD) is a countywide 0.1% sales tax generating about \$134 million in the 2017-2018 biennium. The funds support programs and services for people living with mental health conditions and/or substance use disorders. King County's MIDD is managed and operated by the King County Department of Community and Human Services Behavioral Health and Recovery Division. A 36-member advisory committee provides guidance to the implementation and evaluation of MIDD programs and services. Among MIDD's forthcoming new initiatives will be a new fund to provide small grants for behavioral health-related projects and activities initiated by King County's rural communities (grant program launch is expected during 2018).

[www.kingcounty.gov/midd](http://www.kingcounty.gov/midd)

**Chris Verschuyl 206.263.8941 | chris.verschuyl@kingcounty.gov**

## Best Starts for Kids Levy

The Best Starts for Kids Levy is an initiative to improve the health and well-being of King County by investing in promotion, prevention and early intervention for

children, youth, families and communities.

<http://www.kingcounty.gov/beststarts>

**Sheila Capestany 206.263.7823 | sheila.capestany@kingcounty.gov**

## Communities of Opportunity (COO)

Communities of Opportunity is a network of residents, communities, decision-makers, and funders who believe every community can be a healthy, thriving community—and that equity and racial justice are both necessary and achievable. COO is supported by an innovative public-private partnership between King County and Seattle Foundation to improve the health and well-being of communities across King County.

COO works to achieve more equitable community conditions through community partnerships in geographic and cultural communities, systems and policy change, and shared learning. COO coordinates opportunities for learning, capacity building, and technical assistance available to a wide range of community organizations. Early investments are bringing partnerships together in White Center, SeaTac/Tukwila, Kent, rural Snoqualmie Valley, Seattle's Rainier Valley and Central District, within Vashon's Latinx community, the Seattle urban Native community, and LGBTQ community, to support and test community-driven solutions. In addition, a diverse group of more than 50 organizations across the County received grants to engage in systems/policy work that influences health, social, economic and racial equity.

<http://www.kingcounty.gov/coo>

**Andrea Akita 206.477.4203 | andrea.akita@kingcounty.gov**

## COMPLETED PROJECTS

### Veterans, Seniors & Human Services Levy (VSHSL)

#### Community Meetings

At these events, King County residents were invited to participate in a community conversation on the strengths and needs of their community with staff from the Department of Community and Human Services. In total, King County hosted 28 conversations, nine focus groups, and four online surveys. The input received through this process informed the populations, result areas, and development of the Veterans, Seniors and Human Services Levy, Ordinance 18555 as placed on the ballot November 7, 2017.

**Adam Schmid (206) 477-9338 | adam.schmid@kingcounty.gov**

#### King County Council - Ordinance 18555

On July 20, 2017 the King County Council approved Ordinance 18555, authorizing placement of the Veterans, Seniors and Human Services Levy (VSHSL) on the November 7, 2017 ballot. Planning for the VSHSL was conducted by the Department of Community and Human Services and informed by departmental research, stakeholder consultation and community feedback. ▶

---

### **Community & Human Services Continued**

The VSHSL was passed by King County voters on the November 2017 General Election.

**Adam Schmid 206.477.9338 | adam.schmid@kingcounty.gov**

### **ONGOING PROJECTS**

#### **Veterans, Seniors & Human Services Levy (VSHSL) - Community Engagement (2018)**

Public participation is vital to the VSHSL Implementation Plan and the ongoing development of the VSHSL. King County residents can provide input through a series of online surveys (available in multiple languages) on the VSHSL Planning website: [www.kingcounty.gov/VSHSLPlanning](http://www.kingcounty.gov/VSHSLPlanning). This website will share updates and stories on the VSHSL, host surveys for your input, provide a calendar of public meetings, and publish reports throughout the VSHSL.

**Adam Schmid 206.477.9338 | adam.schmid@kingcounty.gov**

---

### **KING COUNTY DISTRICT COURTS**

#### **Court Services**

Seattle, Shoreline, Renton, Burien, Kent, Redmond, Bellevue, Issaquah, Vashon Island

- Passports
- Domestic Violence
- Anti-Harassment
- Small Claims (up to \$5,000)
- Civil (under \$75,000)
- Opportunity to mitigate/defer/contest traffic infractions
- Relicensing
- Inquest Hearings
- Name Changes
- Vehicle Tow and Impound Hearings
- False Alarm Hearings
- Marriage Ceremonies
- Garnishments and other supplemental proceedings.
- Interpreters for Court Hearings
- Lien Foreclosure and forfeiture hearings
- Therapeutic Courts – Mental Health and Veterans Court
- Eliminate barriers to court access, prosecute accused individuals fairly and efficiently while managing and resolving court cases in a timely manner.
- Protecting the Public Safety by providing resources to hold convicted offenders accountable for their actions.

**Call Center 206.205.9200**

---

### **EXECUTIVE OFFICE**

#### **Executive Office - Performance, Strategy & Budget Budget**

King County uses a biennial (two-year) budget and the 2017-2018 Budget was adopted in November 2016.

Several amendments have been made since but none has significantly affected County services. There has been considerable concern that federal budget changes would adversely affect certain County services, but such changes have been minor so far.

The County is beginning the process to develop the 2019-2020 Budget. Most funds are in good fiscal condition, but revenue limitations mean there is continuing stress on the General Fund, Roads Fund, and Public Health Fund. Reductions in services paid for from the General Fund and Public Health Fund are likely. The Roads Fund is stable but has far less money than is needed to maintain the existing roads system. PSB continues to support tax reform efforts to address these long-term financial problems.

**Dwight Dively 206.263.9687 | dwight.dively@kingcounty.gov**

**Jonathan Swift 206.263.9699 | jonathan.swift@kingcounty.gov**

#### **Continuous Improvement**

PSB continues to deploy the Lean continuous improvement methodology to transform the systems, tools, processes, and culture in County operations to drive greater efficiency and effectiveness in the services and products we provide to our communities.

**Gary Kurihara 206.263.8026 | gary.kurihara@kingcounty.gov**

#### **Performance & Strategy**

PSB continues to use proven management tools such as strategic planning, performance measurement, public performance reporting, visual management, and Executive performance reviews to align key County priorities, ensure accountability for strategic and operational performance, and to communicate to the public how the County is doing on delivering effective, efficient, and equitable services.

The Criminal Justice Strategy and Policy Section will continue to work on advancing systemic criminal justice reforms including alternatives to incarceration, reducing recidivism, and supporting the Executive's path to zero youth detention initiative.

**Michael Jacobson 206.263.9622 | michael.jacobson@kingcounty.gov**

#### **King County Comprehensive Plan Implementation**

PSB leads updates to the King County Comprehensive Plan, most recently in 2016. PSB will coordinate and monitor work on several Action Items included in Chapter 12: Implementation. A number of these efforts will include public engagement and outreach, including:

- Review of the Transfer of Development Rights Program (Dept. of Natural Resources and Parks),
- Initiation of an Alternative Housing Demonstration Project (i.e., small-home developments- Dept. of Community and Human Services),
- Development of a Bicycle Planning Network Re- ▶

---

**Executive Office continued**

- port (Dept. of Transportation),
- Review of the Four to One Program (Office of Performance, Strategy and Budget), and
- Response to a recent court decision regarding
- permit-exempt wells in the rural area (Dept. of Permitting & Environmental Review).
- Additional information on these activities and other long-range planning activities will be shared publicly over the coming months as they develop and will be shared with people on the Comprehensive Plan Mailing list, which can be accessed at [www.kingcounty.gov/compplan/](http://www.kingcounty.gov/compplan/).

Ivan Miller 206.263.8297 | [ivan.miller@kingcounty.gov](mailto:ivan.miller@kingcounty.gov)

---

**EXECUTIVE SERVICES****RALS (Records & Licensing Services)****Community Service Centers (CSCs)**

The King County Community Service Center (CSC) Program works to make it easier to do business with King County via sites located throughout the county. Services provided:

- Apply for a U.S. passport
- Apply for a Washington State marriage license
- Purchase copies of documents recorded with the King County Recorder's Office on or after August 1, 1991.
- Pay King County property taxes
- Purchase or renew a King County pet license
- Obtain information on other county services and programs such as: senior citizen property tax exemptions; assessment appeal forms; property assessment information; local fresh produce guides; bus, bike, or ferry information; King County job listings and applications.

Because King County Community Service Centers offer services on behalf of several agencies, different guidelines or rules apply depending on the service. For additional information on any service, please check out the CSC website: <http://www.kingcounty.gov/depts/records-licensing/community-service-centers.aspx> and contact the site you intend to visit.

- Bothell
- Downtown Seattle - no passport services
- Issaquah - no passport services
- Kent
- Renton
- Shoreline - no passport services

<http://www.kingcounty.gov/operations/csc.aspx>

Jon Scherer, Recording Manager | 206.477.6644

**E-911**

Smart 911

King County launched Smart911 in September, 2012 - a supplemental data service that allows residents to Create a Safety Profile that can be seen by emergency responders when you call 9-1-1.

Enhanced 911 Program Office  
20811 84th Ave S, Suite 105  
Kent, WA 98032  
206.477.4910

**OEM (Office of Emergency Management)****Emergency Management****Emergency preparation and response**

A number of hazards (from earthquakes to major winter storms) threaten Western Washington. There are specific things residents can do to stay safe and protect their property during these sometimes devastating conditions. King County Emergency Management provides resources, tips, and download-able checklists (in multiple languages). To talk to someone about what you and/or your community can do to prepare for emergencies, please contact KCOEM using the information below.

KCOEM also administers regional public alerts to help residents stay informed about potential hazards and threats that impact their area. Sign-up is free: [www.kingcounty.gov/ALERT](http://www.kingcounty.gov/ALERT)

King County Office of Emergency Management  
3511 NE 2nd Street | Renton, WA 98056  
Main Phone: 206.296.3830 | Toll Free: 800.523.5044  
Fax: 206.205.4056 | [ecc.kc@kingcounty.gov](mailto:ecc.kc@kingcounty.gov)

---

**METRO TRANSIT****Metro Transit Service**

- Metro operates two routes serving the west end of the CSA in the vicinity of SE 128th St, from East Renton - one peak commuter route connecting to downtown Seattle via I-405 and I-90 and a DART route providing local service to/from the Renton Transit Center.

- Route 111: SE 128th St/Maplewood; Monday-Friday, 7 morning & 7 afternoon peak commuter trips.

- In March 2017, one morning and one afternoon 111 trips that formerly started/ended within Renton were extended to operate the entire route through Maplewood and along SE 128th, so that all trips would provide service through this area.

- Route 908: Maplewood-Renton local DART; Monday-Saturday, 60 minute peak and off-peak frequency.

Maggie McGehee 206.263.7973 [Maggie.McGehee@kingcounty.gov](mailto:Maggie.McGehee@kingcounty.gov)

**Community Connections**

The King County Council approved \$15 million for the Community Connections program in the 2017-2018



---

**Metro Transit continued**

biennium budget. Community Connections is the new name (as of March, 2017) for what was originally known as the Alternative Services Demonstration Program. It is a four-year (2015-2018) demonstration program in which Metro works with local governments and community partners to develop innovative and cost-efficient transportation solutions in areas of King County that don't have the infrastructure, density, or land use to support regular, fixed-route bus service. The program aims to develop, test, and evaluate new transportation services that take advantage of innovative ideas, unique partnerships, or emerging technology.

In 2017, Community Connections and King County Parks partnered to launch Trailhead Direct – a pilot project that seeks to ease vehicle congestion, reduce safety hazards and expand access to hiking destinations in the Issaquah Alps and along I-90. Between August 5 and October 15, 2017, Trailhead Direct operated on a trial basis between Issaquah Transit Center, Margaret's Way Trailhead, Poo Poo Point Trail Head, Sunset Trailhead, and Issaquah Highlands Park and Ride. King County Parks and Metro Transit staff are using the experience of this trial to shape service for the 2018 hiking season.

**Cathy Snow 206.477.5760 | [cathleen.snow@kingcounty.gov](mailto:cathleen.snow@kingcounty.gov)**

**METRO CONNECTS Long-Range Plan**

King County Council adopted Metro's long-range plan, METRO CONNECTS, in January 2017. The Plan presents a shared vision for a future public transportation system that gets people where they want to go and helps our region thrive. It describes an integrated network of transportation options in 2025 and 2040, the facilities and technology needed to support those services, and the financial requirements for building the system. It was developed in close coordination with Sound Transit and other transportation agencies. More information is available online at [kcmetrovision.org](http://kcmetrovision.org).

**Graydon Newman 206.477.5862 | [graydon.newman@kingcounty.gov](mailto:graydon.newman@kingcounty.gov)**

**METRO CONNECTS Development Program**

The METRO CONNECTS Development Program (MCDP) is a midrange planning effort that outlines the timing and substance of Metro's efforts to achieve the METRO CONNECTS vision for service and infrastructure in 2025. Major elements of this program include creating a schedule that shows where, how much, and when Metro will invest in the service growth and capital improvements that METRO CONNECTS envisions; and establishing a regular forum to engage and coordinate with cities and stakeholders on the implementation of METRO CONNECTS through the Program's Technical Advisory Committee (TAC). The MCDP is planned to be a rolling program that will

inform decision-making in 6-10-year increments over each successive biennium.

King County transmitted materials for approval to King County Council in October 2017, and anticipates approval in early 2018. Metro's planning work is ongoing to develop more detail on projects needed to develop the 2025 service network.

**Graydon Newman 206.477.5862 | [graydon.newman@kingcounty.gov](mailto:graydon.newman@kingcounty.gov)**

**Metro Transit moving to a new level in King County government**

In September 2017, King County Executive Dow Constantine announced his proposal to make Metro Transit its own department within King County government—no longer a division of the Department of Transportation as it is now.

Why? Demand for public transportation is rising, and our region is counting on Metro to deliver more and better transit services. The agency will be in a stronger position to deliver on this expectation as a stand-alone department.

Metro will be making internal organizational changes and developing a new budget with the goal of becoming a department in early 2019. Metro riders will not be affected by the agency's transition to department status. Read the Executive's press release here.

**Fleet Administration****On-going internal support services**

Fleet Administration is an internal customer service agency that provides cost effective vehicle services, parts, materials and construction supplies. Our goal is to manage a safe responsive fleet of vehicles and equipment, employee access to materials and supplies, in order to respond to the needs of King County citizens.

**Jennifer Lindwall 206.477.3883 | [jennifer.lindwall@kingcounty.gov](mailto:jennifer.lindwall@kingcounty.gov)**

Fleet provides King County personal property asset management services including mandatory annual inventory report, warehousing and dispersal of surplus items. Our goal is to maintain accurate procedures for the accountability of King County personal property inventory.

**Russ Johnson 206.477.3889 | [russ.johnson@kingcounty.gov](mailto:russ.johnson@kingcounty.gov)**

---

**NATURAL RESOURCES & PARKS****PARKS****Future Funding for King County Parks**

The King County Parks, Trails, and Open Space Replacement Levy provides the majority of funding for the King County Parks system. This six-year voter-approved levy, which passed with over 70% support, began in 2014 and will be expiring in 2019. Examining options for future funding will be a major work item ▶

## Natural Resources & Parks continued

for King County Parks staff in 2018.  
<https://kingcountyparks.org/2017/03/18/steady-as-she-goes/>  
**Doug Hodson 206.477.5918 | [doug.hodson@kingcounty.gov](mailto:doug.hodson@kingcounty.gov)**

### Parks Customer Service and Outreach

King County Parks has launched a new online reservation system for camping, picnic shelters, and other park amenities throughout the County. Parks is piloting a new mobile and online tool called SeeClickFix for park and trail visitors to report issues and make suggestions.  
**Matthew Perkins 206.477.4527 | [matthew.perkins@kingcounty.gov](mailto:matthew.perkins@kingcounty.gov)**

### Cougar Mountain Trailhead Planning

King County Parks is working with a consultant on design and permitting for a new trailhead off of Newport Way that will provide access to Cougar Mountain trails. The parking lot will be designed for approximately 40 cars and have recreation amenities including restroom facilities and signage.  
**Kelly Heintz 206.477.6478 | [kelly.heintz@kingcounty.gov](mailto:kelly.heintz@kingcounty.gov)**

### Cougar Precipice Trailhead Parking Lot

King County Parks will be developing a parking lot at the Cougar Precipice Trailhead along NW Newport Way in Issaquah. A 30-40 car asphalt parking lot will replace the existing gravel pull-off, which currently accommodates 3-4 cars. The new parking lot will include a restroom, trailhead kiosk and signage, picnic tables and a bike rack, landscape restoration and trailhead connections. The parking lot design is being coordinated with the City of Issaquah in relation to their future improvements along NW Newport Way. The project is currently at preliminary design, with construction anticipated to begin late 2018 once permits are approved.  
**Linda Frkuska 206.477.4484 | [linda.frkuska@kingcounty.gov](mailto:linda.frkuska@kingcounty.gov)**

### Cougar Squak Corridor Trailhead Parking Lot Four Creeks/Tiger Mtn.

King County Parks will be renovating and expanding the existing gravel parking lot at Cougar Squak Corridor Trailhead, which is also the Margaret's Way Trailhead, along SR 0900. The renovated lot will accommodate more parking and have an asphalt surface. The project will include demolition, grading and earthwork, storm drainage, mitigation and landscape restoration. The new parking lot will feature a restroom, trailhead kiosk and signage and trailhead connections. The project is currently at preliminary design, with construction anticipated to begin spring 2019 once permits are approved.

<http://www.kingcounty.gov/services/parks-recreation/parks/trails/backcountry-trails/cougar-squak.aspx>

**Linda Frkuska 206.477.4484 | [linda.frkuska@kingcounty.gov](mailto:linda.frkuska@kingcounty.gov)**

## COMPLETED PROJECTS

### Planning

In early 2017, the Cougar/Squak Corridor Site Management Guidelines were completed and approved after a formal public comment period and SEPA process.  
**Kelly Heintz 206.477.6478 | [kelly.heintz@kingcounty.gov](mailto:kelly.heintz@kingcounty.gov)**

### Acquisitions

King County Parks acquired approximately 24 acres protecting key forested parcels adjacent to Cougar Squak Corridor long identified by conservation partners.

**Kelly Heintz 206.477.6478 | [kelly.heintz@kingcounty.gov](mailto:kelly.heintz@kingcounty.gov)**

### Volunteer Program Events

1,038 volunteers gave 3,073 hours at volunteer events – tasks included trail maintenance, new trail construction, planting native trees and shrubs and removing invasive plants. Sites included: King County Greenhouse, Log Cabin Natural Area, Squak Mountain Corridor Park, Cougar Mountain Regional Wildlife Park. Washington Trails Association, the Nature Conservancy, and Trust for Public Lands have been key partners. Other volunteer groups include Seattle Running Club, Home-school Squad, WA Geocachers, AmeriCorps NCCC, VOICE/SVP, Tahoma Outdoor Academy, Microsoft, PAWS – Guide Dogs, Two Rivers School.

**Laurie Clinton 206.477.6113 | [laurie.clinton@kingcounty.gov](mailto:laurie.clinton@kingcounty.gov)**

### Coalfield Play Area Rehabilitation

The playground at Coalfield Park in Renton closed in April 2017 and reopened in July 2017. The old playground equipment and wood fiber was replaced with all new equipment and rubber tile safety. This project was funded in part by the voter-approved 2014-19 King County Parks, Trail and Open Space Replacement Levy and in part by the Youth and Amateur Sports Fund.

**Lindsey Miller 206.477.3549 | [lindsey.miller@kingcounty.gov](mailto:lindsey.miller@kingcounty.gov)**

## ONGOING PROJECTS

### On-going maintenance and community outreach

Maintenance of Cougar Mountain, Squak Mountain, May Valley, Log Cabin, Issaquah Creek, Squak Mountain/Tiger Mountain Corridor and other park facilities within the service area as well as On-going conservation easement monitoring. Community outreach with Issaquah Alps, Washington Trails Association, Back Country Horsemen, multiple hang glider organizations and other user groups within the service area.

**Don Harig 206.477.6140 | [don.harig@kingcounty.gov](mailto:don.harig@kingcounty.gov)**

### Volunteer Program Events

Volunteers that participate in the King County Parks volunteer program provide more than 55,000 hours of service in our parks, trails and natural areas each

## Natural Resources & Parks continued

year. From building and repairing backcountry trails to removing invasive plants and planting native plants to promoting recycling and composting at summer concerts these volunteers are a vital part of the maintenance and improvement of the system. These volunteers play an important role in stewarding our 28,000 acres of open space. Sign-up for the volunteer newsletter for a listing of scheduled events in the area at: Volunteer - King County Want to know what it's like to volunteer with us? Check out our new video: Volunteer with King County Parks on Vimeo If you, your group or business is interested in doing a volunteer project at your favorite King County Park site, we can work with you to plan a custom event. Please contact Volunteer Program Manager Laurie Clinton for custom events and any additional volunteer service opportunities in King County Parks.

Laurie Clinton 206.477.6113 | laurie.clinton@kingcounty.gov

### Tiny Trees Preschool at Cougar Mountain Regional Wildland Park

Tiny Trees Preschool, a Community Partnerships and Grants Program partner with King County Parks, established an outdoor classroom at Cougar Mountain Regional Wildland Park and began providing preschool for the 2017-2018 school year.

Scott Thomas 206.477.4586 | scott.thomas@kingcounty.gov

### Youth and Amateur Sports Grant Program

King County Parks launched a new grant program in 2017. Youth and Amateur Sports Grants (YASG) support fit and healthy communities by investing in programs and capital projects that reduce barriers to access physical activity. King County Parks hosted information sessions in October and the application deadline was in November. Applications will be evaluated and awarded in January 2018. To learn more about the program visit the website at <http://www.kingcounty.gov/services/parks-recreation/parks/get-involved/partnerships-and-grants/yasg.aspx>

Butch Lovelace 206.477.4577 | butch.lovelace@kingcounty.gov

### Trailhead Direct

King County Parks and King County Metro launched the pilot season of Trailhead Direct. Trailhead Direct wrapped up its inaugural season on Oct. 14-15. Operating since Aug. 5 from the Issaquah Transit Center and averaging about 40 riders per day, Trailhead Direct connected hikers to more than 5,000 acres of protected lands with 150 miles of hiking trails in the Issaquah Alps. Stops included: Margaret's Way trailhead at Cougar-Squak Corridor Park, the Poo Poo Point trailhead on West Tiger Mountain, East Sunset Way Trailhead in Issaquah, Issaquah Highlands Park-and-Ride and Issaquah Transit Center. The service will continue in

spring of 2018. To learn more visit: <https://kingcountyparks.org/2017/07/12/trailhead-direct-park-ride-hike/>

Ryan Dotson 206.477.4562 | ryan.dotson@kingcounty.gov

### Family Movie Nights

Join King County Parks in summer 2018 for a special outdoor movie night in your Big Backyard. This is a free event so bring your low-backed chairs, blankets, snacks, and enjoy a relaxed evening in the park. The movie will be projected onto a 40-foot tall inflatable movie screen so invite your friends, teammates and family- we've got space! Dates and locations to be decided.

Elizabeth Jessup 206.263.0584 | elizabeth.jessup@kingcounty.gov

### Solid Waste Division

(Includes areas east of Newcastle, Renton and south of Issaquah)

### 2017 Completed Projects

#### Landfill Neighbor Outreach

Held two community meetings and a landfill tour for neighbors of the Cedar Hills Regional Landfill

Polly Young 206.477.5266 | polly.young@kingcounty.gov

#### Cedar Hills Regional Landfill Operations

- Cedar Hills Regional Landfill South Solid Waste Area Excavation - Excavated approximately 730,000 cubic yards of buried garbage from a former unlined area of the landfill (South Solid Waste Area) and relocated the excavated material to other lined areas of the landfill.

Zahid Khan 206.477.5252 | mizan.rahman@kingcounty.gov

### Time limited 2017 projects that are scheduled for work and completion in 2017 or 2018

### Comprehensive Solid Waste Management Plan Update

The Solid Waste Division is preparing a draft plan for public review and comment that broadly outlines how King County will manage garbage for the next 20 years. Topics covered in the plan range from waste prevention, recycling and solid waste collection, to transfer and disposal of waste and how these services will be financed. Three key topics are being addressed in the plan: 1) how will King County dispose of its garbage over the long term, 2) what type of transfer services should be provided in northeast King County, and 3) how will we increase recycling to reach a 70% recycling goal. Public comment will be sought in early 2018. Website: <http://kingcounty.gov/depts/dnrp/solid-waste/about/planning/comp-plan.aspx>

Beth Humphreys 206-477-5264 | beth.humphreys@kingcounty.gov

### Landfill Operations and Neighbor Outreach

- Landfill Gas Pipeline Upgrade - Install a redundant landfill gas conveyance pipeline from the landfill's North Flare Station to Bio Energy Washington's land- ▶

## Natural Resources & Parks continued

fill gas-to-energy facility that generates clean, renewable natural gas from landfill gas.

**Tien Pham 206.477.5232 | tien.pham@kingcounty.gov**

- Area 8 Facility Relocation and Development – relocation of two stormwater detention ponds and begin excavation of soil for the development of a new landfill cell – Area 8 – within the existing footprint of the landfill. This work was largely completed in 2016. Some grading work remains. In 2017-18 the new Area 8 will be excavated and the liner system will be installed. The new area is scheduled to be ready to receive waste in early 2019.

**Margaret Bay 206.263.5851 | margaret.bay@kingcounty.gov**

- Area 7 Stage 3 and Stage 4 Closure – Landfill areas are closed in stages. Staged closures of the area where garbage is currently being buried at the landfill, Area 7, will include installation of final cover on the west slope and temporary cover on the south slope. Stage 3 will occur in 2017 and Stage 4 in 2018.

**Margaret Bay 206.263.5851 | margaret.bay@kingcounty.gov**

- Factoria Transfer Station Replacement Project – (CIP Project) construction of the new Factoria Recycling and Transfer facility was substantially completed in August 2017. The new transfer building, with a new flat floor configuration and garbage compaction capabilities opened in May 2016. Recycling services were available beginning in October 2017 and the Household Hazardous Waste (HHW) facility opened in October 2017. Website: <http://your.kingcounty.gov/solidwaste/facilities/factoria-replacement-project.asp>

**Doug Chin 206.477.5217 | doug.chin@kingcounty.gov**

- Self-haul Recycling Separation Requirement - Beginning in January 2018, customers will be required to separate yard waste, clean wood, cardboard, and scrap metal from their garbage at facilities where those materials are accepted for recycling.

**Dale Alekel 206.477.5267 | dale.alekel@kingcounty.gov**

## ON-GOING PROGRAMS

**Waste Reduction and Recycling Outreach and Education**  
Includes programs and services such as:

- Recycle More/Recicla Mas – education and outreach to single-family residents on how to recycle and compost more materials in curbside programs. Includes targeted outreach to the Spanish-speaking Latino community in King County. Websites: <http://your.kingcounty.gov/solidwaste/garbage-recycling/recycle-more.asp>, and <http://your.kingcounty.gov/solidwaste/reciclamas/index.asp>, Facebook <https://www.facebook.com/kcrecidamas>; <https://www.facebook.com/recyclemore>

- K-12 Schools program – assembly programs, classroom workshops and assistance to student Green Teams. Website: <http://your.kingcounty.gov/solidwaste/secondary-school/index.asp>

- Green Schools Program - assists more than 250 public and private K-12 schools and 13 school districts to initiate and improve waste reduction, recycling, energy and water conservation and other conservation practices. Recognizes schools and school districts that complete criteria in the program's "Best Practices Guides." Website: <http://your.kingcounty.gov/solidwaste/greenschools/index.asp>

- Recycling Collection Events - King County funding provided to cities and unincorporated areas to offer events for residents and businesses to recycle select materials. Website: <http://your.kingcounty.gov/solidwaste/garbage-recycling/events.asp>

- Renton and Newcastle Recycling Collection Event accept neighboring unincorporated area residents
- EcoConsumer – Offering free community repair events in Bellevue, Issaquah, Renton, Skyway and other communities. The EcoConsumer public outreach program also provides information and resources about waste reduction and other environmental concerns to the public and media through TV and radio segments, articles, presentations, social media and more. Website shortcut: [kcecoconsumer.com](http://kcecoconsumer.com)

**Tom Watson 206.477.4481 | tom.watson@kingcounty.gov**

- Green Tools – this green building program supports county agencies, cities, the building community, and the public in designing buildings and structures that have fewer impacts on the environment, are energy efficient, and use recycled materials. Website: <http://your.kingcounty.gov/solidwaste/greenbuilding/index.asp>

- Construction & Demolition Waste (C&D) - C&D recycling requirements have rolled out around the County – an informational presentation can be scheduled for your CSA by contacting Kinley Deller at [kinley.deller@kingcounty.gov](mailto:kinley.deller@kingcounty.gov)

Website: <http://your.kingcounty.gov/solidwaste/greenbuilding/construction-demolition.asp>.

- LinkUp – works with businesses, agencies and other organizations in the Puget Sound area to expand markets for selected recyclable and reusable materials. Website: <http://your.kingcounty.gov/solidwaste/linkup/index.asp>

- Customer Service - Information/education provided to customers/public on SWD services via web pages and phone support. Website: <http://your.kingcounty.gov/solidwaste/index.asp>

**Solid Waste Division Customer Service: 206.477.4466 | TTY Relay: 711**

## Transfer Station

The Renton Transfer Station is a facility where residents and businesses bring their garbage for disposal and their recyclable materials for recycling. Detailed information about the materials accepted for recycling and disposal can be found on the website. Website:

<http://your.kingcounty.gov/solidwaste/facilities/renton-transfer.asp?ID=340>  
**Solid Waste Division Customer Service 206.477.4466 | TTY Relay: 711**

## Natural Resources & Parks continued

### Household hazardous waste collection

Offers free collection of hazardous waste from households and qualifying businesses at two fixed collection sites and the travelling Wastemobile.

- Factoria Household Hazardous Waste Drop Off Service
- Auburn Wastemobile at Outlet Collection
- Renton Wastemobile

Websites: HHW Facility location and hours: <http://your.kingcounty.gov/solidwaste/facilities/hazwaste.asp>

Wastemobile schedule: <http://www.hazwastehelp.org/HHW/wastemobile.aspx>

**Household Hazards Line 206.296.4692**

### Litter and Illegal Dumping

Includes several programs, including:

Community Litter Cleanup - Coordinate cleanup of illegal dumpsites and litter on public property

**Morgan John 206.477.4624 | [morgan.john@kingcounty.gov](mailto:morgan.john@kingcounty.gov)**

- Illegal Dumping Hotline – maintains hotline for citizens to report illegal dumping, directs complaints to the appropriate agency for follow up

**Hotline: 206-296-SITE (7483)**

- Junk Vehicle – provides information and facilitates process for removing abandoned vehicles from private property

**Mary Impson 206.477.0297 | [mary.impson@kingcounty.gov](mailto:mary.impson@kingcounty.gov)**

**Community Cleanup Assistance Program** – financial assistance (waived tip fees) to private property owners who are either low income or whose property has been dumped on. Website: <http://your.kingcounty.gov/solidwaste/cleanup/index.asp>. For more information visit <http://kingcounty.gov/depts/dnrp/solid-waste/programs/litter-dumping.aspx>

**Terri Barker 206.477.5214 | [terri.barker@kingcounty.gov](mailto:terri.barker@kingcounty.gov)**

### Landfill Neighbor Outreach

- Cedar Hills Regional Landfill Community Meetings - provides an on-going forum for landfill area residents to learn about current and planned activities at King County's landfill and at Bio Energy Washington's landfill gas-to-energy facility. Meetings occur twice a year.

Website: <http://your.kingcounty.gov/solidwaste/facilities/cedar-hills-meetings.asp>

**Polly Young 206.477.5266 | [polly.young@kingcounty.gov](mailto:polly.young@kingcounty.gov)**

## WATER & LAND RESOURCES DIVISION

### May Creek and Long Marsh Creek Flood Reduction

This project removed reed canary grass and sediment from the May Creek and Long Marsh Creek to reduce overbank flooding. Earthwork was completed in 2014. Planting was completed in 2015. Monitoring and maintenance will continue until 2024.

**Wes Kameda 206.477.4722 | [wesley.kameda@kingcounty.gov](mailto:wesley.kameda@kingcounty.gov)**

### McDonald Creek Sediment Removal at Sunset Valley Farms

This project will restore the conveyance capacity of the in-stream facility at Sunset Valley Farms by removing

accumulated sediment. The project is currently pending approval of regulatory permits.

**Wes Kameda 206.477.4722 | [wesley.kameda@kingcounty.gov](mailto:wesley.kameda@kingcounty.gov)**

### May Creek Tributary 291A (commonly known as Cemetery Pond Tributary)

A small catchment basin study for stormwater retrofit opportunities was completed in 2015.

See website for more information at <http://www.kingcounty.gov/depts/dnrp/wlr/sections-programs/stormwater-services-section/capital-services-unit/small-stream-basin-retrofit/may-creek-trib-291A-retrofit.aspx>

The May Creek Tributary 291A Cemetery Pond DR0509 Retrofit and Wetland Restoration project has received grant award from the 2017 Council Allocated Waterworks Grant Program.

**Claire Jonson 206.477.4720 | [claire.jonson@kingcounty.gov](mailto:claire.jonson@kingcounty.gov)**

### SR 169 Flood Risk Reduction Feasibility Study

During moderate flood events on the Cedar River, approximately a 10-year return period, overtopping of State Route (SR) 169 occurs just west of Cedar Grove Road, forcing closure of SR 169. This causes significant detours for residents in the valley and isolates residents in the immediate area. The King County River and Floodplain Management Section, with funding from the King County Flood Control District, is undertaking a feasibility study to determine the causes of the flooding and develop design alternatives for mitigating the problem. Potential solutions will be developed in partnership with the Washington Department of Transportation.

**Tracy Winjum 206.263.0174 | [twinjum@kingcounty.gov](mailto:twinjum@kingcounty.gov)**

### Herzman Levee Setback and Trail Stabilization Project

The Herzman Levee, located along the Cedar River about four miles east of the I-405/SR 169 interchange, is prone to seepage and artificially confines the river, forcing it to flow directly toward a revetment that protects the Cedar River Trail and SR 169. The King County River and Floodplain Management Section, with funding from the King County Flood Control District, is initiating design for a project that will modify the levee, enhancing the overall level of flood protection for neighboring homes and critical infrastructure. The project will also address the repeated damage these facilities have experienced as a result of erosion during past flood events, leading to greater resiliency and fewer costly repairs. Completion of preliminary design is anticipated in fall 2018. Construction is expected to occur in summer 2020.

**Dan Heckendorf 206.477.8459 | [dan.heckendorf@kingcounty.gov](mailto:dan.heckendorf@kingcounty.gov)**

### Maplewood

The King County River and Floodplain Management Section, with funding from the King County Flood Control District, is conducting a feasibility study to evaluate potential landslide, flood, and erosion risk in the Maplewood neighborhood. Several homes within the Maplewood ▶



## Natural Resources & Parks continued

neighborhood are at risk from river flooding and bank erosion and could be surrounded by water and isolated during a 100-year flood event. The extent of flood hazards could be affected by potential landslides from the steep slopes along the opposite river bank. Initial hazard analysis will be complete in fall 2018.

**Kate Akyuz 206.477.4607 | [kate.akyuz@kingcounty.gov](mailto:kate.akyuz@kingcounty.gov)**

### Salmon Habitat Restoration Program (SHRP) Projects

Working with local property owners and public agencies to design, permit, and construct habitat enhancement projects. 2011-2018

**Laura Hartema 206.477.4708 | [laura.hartema@kingcounty.gov](mailto:laura.hartema@kingcounty.gov)**

### Cedar River Garlic Mustard Detection and Control

King County is surveying for and working to eradicate the Class A noxious weed garlic mustard, an alarming new invasive plant infesting properties on the Cedar River, before it gets spread further by floodwaters, animals and other types of disturbance. On-going, seasonal

**Roy Brunskill 206.477.4656 | [roy.brunskill@kingcounty.gov](mailto:roy.brunskill@kingcounty.gov)**

### Shadow Lake Integrated Aquatic Vegetation Management Plan (IAVMP)

Under the guidance of the Shadow Lake Integrated Aquatic Vegetation Management Plan (IAVMP) which was completed in December 2016, Noxious Weed program staff will work with the Shadow Lake community in implementing the weed control strategy. Funding options for larger-scale aquatic weed control efforts in 2018 and 2019 (including Eurasian watermilfoil control) are pending, contingent on grant application results. KCNWCP staff time is funded by the Program's general operating budget. Ongoing at least through 2018.

**Ben Peterson 206.477.4724 | [ben.peterson@kingcounty.gov](mailto:ben.peterson@kingcounty.gov)**

### Horseshoe Lake Flood Reduction

Project in conjunction with the Black Diamond Village Partners development to pump and convey flood water from Horseshoe Lake to a receiving facility in the City of Black Diamond. The project is pending completion of SEPA and approval of regulatory permits.

**Wes Kameda 206.477.4722 | [wesley.kameda@kingcounty.gov](mailto:wesley.kameda@kingcounty.gov)**

### Cemetery Pond Stormwater Retrofit and Wetland Restoration Project

This project would improve stormwater flow control and water quality protection being provided by the Cemetery Pond Wetland located in May Creek Tributary 291A. The improved flow control would reduce stormwater runoff rates downstream that contribute to erosion and sedimentation in May Creek. Expanding the wetland would improve the water quality protection already provided by the pond. See website for more information at <http://www.kingcounty.gov/depts/dnrr/wlr/sections-programs/stormwater-services-section/capital-services-unit/>

[small-stream-basin-retrofit/may-creek-trib-291A-retrofit.aspx](http://www.kingcounty.gov/depts/dnrr/wlr/sections-programs/stormwater-services-section/capital-services-unit/small-stream-basin-retrofit/may-creek-trib-291A-retrofit.aspx)

Acquisition in 2019, design by 2020, permitting by 2021, and construction in 2022.

**Matt McNair 206.477.6280 [matt.mcNair@kingcounty.gov](mailto:matt.mcNair@kingcounty.gov)**

### May Valley Flood Reduction Project

This project is a continuation of actions aimed at reducing dry season flooding of pastures and other agricultural lands in the Valley caused by lack of drainage in May Creek. Previous actions included sediment removal and vegetation management in the May Creek channel and keeping sediment out of the channel by capturing it upstream. The next actions being considered include additional improvements to keep sediment out of the channel and better management of the Valley's increased beaver population to reduce flooding caused by their dams. A search for possible sediment facility construction sites on two May Creek tributaries began in late 2017 and will continue in 2018. Beaver management actions may begin as early as 2018. For information regarding Beaver management: <https://kingcounty.gov/services/environment/animals-and-plants/beavers/problems-solutions.aspx>

**Wendy Kara 206.477.4723 [wendy.kara@kingcounty.gov](mailto:wendy.kara@kingcounty.gov)**

### Moore Neighborhood Drainage Assistance Program Project

Offsite flows enter the plat, overwhelm the flow control facility and contribute to flooding of the road and several properties. Construction of ditch to reduce the flooding of private property and public roadway. Anticipated construction in 2018, waiting for initial design concepts which will determine permitting needs and time table.

**Alex Jones 206.477.4719 [alex.jones@kingcounty.gov](mailto:alex.jones@kingcounty.gov)**

### May Creek and Long Marsh Creek Flood Reduction

This project removed reed canary grass and sediment from the May Creek and Long Marsh Creek to reduce overbank flooding. Earthwork was completed in 2014. Planting was completed in 2015. Monitoring and maintenance will continue until 2024.

**Wes Kameda 206.477.4722 | [wesley.kameda@kingcounty.gov](mailto:wesley.kameda@kingcounty.gov)**

### McDonald Creek Sediment Removal at Sunset Valley Farms

This project will restore the conveyance capacity of the in-stream facility at Sunset Valley Farms by removing accumulated sediment. The project is currently pending approval of regulatory permits.

**Wes Kameda 206.477.4722 | [wesley.kameda@kingcounty.gov](mailto:wesley.kameda@kingcounty.gov)**

### Issaquah Creek Mitigation Project

The project will re-establish 2.7 acres of wetland habitat, create five backwater channels, and place large wood jams for salmon habitat on a publicly-owned site on Issaquah Creek, Washington. This project will fulfill in-lieu fee mitigation credit obligations for the Mitigation Reserves Program. The project may also provide large ▶

## Natural Resources & Parks continued

wood and riparian mitigation for WSDOT impacts from the SR 18 Holder Creek Emergency Slide Repair. Projects. Construction is planned for 2019.

Project webpage - <https://www.kingcounty.gov/services/environment/water-and-land/wetlands/mitigation-credit-program/mitigation-sites/project-issaquah-creek.aspx>

Josh Latterell 206.477.4748 | [josh.latterell@kingcounty.gov](mailto:josh.latterell@kingcounty.gov)

## COMPLETED PROJECTS

### Elliott Reach WSDOT Mitigation

This project was designed to help meet part of WSDOT 520 mitigation needs by creating wetland, off-channel habitat, and floodplain connections on roughly 5 acres of property in the Elliot Reach. Work was completed via the Mitigation Reserves Program. Construction was phased with the first completed in summer 2015; the second in 2016 and minor adjustments and final planting in 2017.

<http://www.kingcounty.gov/depts/dnrp/wlr/sections-programs/river-floodplain-section/capital-projects/elliott-bridge.aspx>

## ON-GOING PROJECTS

### Land Conservation Initiative

The King County Land Conservation Initiative is a bold effort underway to “finish the job” on land conservation in King County. Across the County, King County and city partners have identified 62,000 acres of the highest priority conservation lands in five separate categories: (1) urban parks/greenspace, (2) regional trails, (3) river & natural lands, (4) farmlands, and (5) forestlands. The Initiative is a regional effort to permanently protect conservation land to provide benefits to today’s residents and generations to come. The effort is county-wide – from the edge of the Puget Sound, east through urban areas and rural communities, to the farm fields and river valleys at the foot of the Cascade Mountains. In the Snoqualmie Watershed, the County and city partners have identified more than 25,000 acres of high conservation value land. Learn more at <http://kingcounty.gov/services/environment/water-and-land/land-conservation.aspx>.

Michael Murphy 206.477.4781 | [michael.murphy@kingcounty.gov](mailto:michael.murphy@kingcounty.gov)

### Green Shorelines

Information and guidance for lakeshore homeowners to understand and implement Green Shoreline practices and green dock designs to benefit salmon and water quality.

<http://www.govlink.org/watersheds/8/action/GreenShorelines/default.aspx>  
Jason Mulvihill-Kuntz 206.477.4780 | [jason.mulvihill-kuntz@kingcounty.gov](mailto:jason.mulvihill-kuntz@kingcounty.gov)

### Salmon SEEson

Spot spawning salmon in the Lake Washington/Cedar/Sammamish and Green-Duwamish Watersheds each fall. Some sites and times have volunteer naturalists on hand; others are self-guided. Check the website for

details. September 2017-January 2018 depending on the site. <http://www.govlink.org/watersheds/8/action/salmon-season/default.aspx>  
Jason Mulvihill-Kuntz 206.477.4780 | [jason.mulvihill-kuntz@kingcounty.gov](mailto:jason.mulvihill-kuntz@kingcounty.gov)

### Drainage and Water Quality Complaint Investigations

Respond to citizen concerns regarding stormwater runoff and surface water quality problems on both residential and commercial property in the unincorporated areas of King County. <http://www.kingcounty.gov/environment/waterandland/stormwater/problem-investigation-line.aspx>

Drainage Complaint Line 206.477.4811

### Minimize Stormwater Pollution

Stormwater runoff comes from small, individual sources in all parts of the watershed. It is a problem that residents can change by stopping small, individual activities that cause pollution and result in large-scale pollution. <http://www.kingcounty.gov/environment/waterandland/stormwater/introduction/stormwater-runoff.aspx>

### Neighborhood Drainage Assistance Program (NDAP)

NDAP addresses private flooding, erosion, and sedimentation problems. The NDAP can design and fund capital improvement projects, repair existing drainage systems, and provide technical assistance for questions about construction, maintenance, permits, and storm drainage. <http://www.kingcounty.gov/environment/waterandland/stormwater/neighborhood-drainage-ssistance.aspx>

Brian Sleight 206.477.4826 | [brian.sleight@kingcounty.gov](mailto:brian.sleight@kingcounty.gov)

### Agricultural Drainage Assistance Program (ADAP)

ADAP helps agricultural property owners improve drainage of their fields by providing both technical and financial assistance.

<http://www.kingcounty.gov/environment/waterandland/stormwater/neighborhood-drainage-ssistance.aspx>

Brian Sleight 206.477.4826 | [brian.sleight@kingcounty.gov](mailto:brian.sleight@kingcounty.gov)

### Livestock Program

Support the raising and keeping of livestock to minimize adverse impacts on the environment, particularly on water quality and salmon habitat. This includes help developing a workable solution for handling livestock waste.

<http://www.kingcounty.gov/environment/wlr/sections-programs/rural-regional-services-section/agriculture-program/livestock-programs.aspx>

Rick Reinlasoder 206.477.4810 | [rick.reinlasoder@kingcounty.gov](mailto:rick.reinlasoder@kingcounty.gov)

### Farmland Preservation Program

The County purchases development rights from agricultural landowner’s to permanently protect the land for future farming. It is a voluntary program.

<http://www.kingcounty.gov/environment/wlr/sections-programs/rural-regional-services-section/agriculture-program/farmland-preservation-program.aspx>

Ted Sullivan 206.477.4834 | [ted.sullivan@kingcounty.gov](mailto:ted.sullivan@kingcounty.gov)

### Forestry Program

The County offers education, technical assistance, and economic incentives aimed at retaining forest land ▶

### **Natural Resources & Parks continued**

for its environmental, social, and economic benefits. <http://www.kingcounty.gov/environment/wlr/sections-programs/rural-regional-services-section/forestry-program.aspx>  
**Bill Loeber 206.477.4755 | [bill.loeber@kingcounty.gov](mailto:bill.loeber@kingcounty.gov)**  
**Wendy Sammarco 206.263.6916 | [wsammarco@kingcounty.gov](mailto:wsammarco@kingcounty.gov)**

### **Current Use Taxation**

The Public Benefit Rating System and the Timber Land programs provide incentives to encourage landowners to voluntarily conserve and protect land resources, open space, and timber. In return for preserving and managing resources, the land is assessed at a value consistent with its “current use” rather than the “highest and best use.” The reduction in assessed land value is greater than 50 percent and as much as 90 percent for the portion of the land participating in the program. <http://kingcounty.gov/incentives>  
**Bill Bernstein 206.477.4643 | [bill.bernstein@kingcounty.gov](mailto:bill.bernstein@kingcounty.gov)**  
**Megan Kim 206.477.4788 | [megan.kim@kingcounty.gov](mailto:megan.kim@kingcounty.gov)**

### **Transfer of Development Rights**

The TDR program is a voluntary, incentive-based, and market-driven approach to preserve land and steer development growth away from rural and resource lands into King County’s Urban Area. Rural landowners realize economic return through the sale of development rights to private developers who are able to build more compactly in designated unincorporated urban areas and partner cities. [http://www.kingcounty.gov/environment/stewardship/sustainable-building/transfer-development-ights.aspx](http://www.kingcounty.gov/environment/stewardship/sustainable-building/transfer-development-rights.aspx)

### **Hazardous Waste Management**

Small businesses can get advice, cash incentives, safety materials, training, and access to free disposal to decrease and safely dispose of hazardous waste materials. Materials are available in multiple languages. <http://www.lhwmp.org/home/BHW/sqg.aspx>

**Call the Business Waste Line 206.263.8899**

### **Hazardous Waste Management**

Small businesses can become EnviroStars and be recognized for their environmentally friendly practices and commitment. Free business promotion, mentoring and technical assistance. <http://www.lhwmp.org/home/EnviroStars/index.aspx>

**Call EnviroStars 206.263.1663**

### **Hazardous Waste Management**

Residents can get chemical free gardening advice from Grow Smart Grow Safe, indoor pesticide recommendations, and free disposal services (including home pick-up for qualifying residents) to decrease and safely dispose of hazardous waste materials.

<http://your.kingcounty.gov/solidwaste/facilities/hazwaste.aspx>; <http://your.kingcounty.gov/solidwaste/naturalyrdcare/index.asp>

**Call the Household Hazards Line 206.296.4692**

### **Restoration Project Monitoring and Maintenance**

The Ecological Restoration and Engineering Services, Monitoring and Maintenance Program aims to find ways to make projects more cost-effective and reliable through the use of comparative studies and experiments. The program tracks project outcomes and performs maintenance and modifications, as needed, to ensure projects meet their goals.

**Josh Latterell 206.477.4748 | [josh.latterell@kingcounty.gov](mailto:josh.latterell@kingcounty.gov)**

### **Small Habitat Restoration Program**

King County’s Small Habitat Restoration Program builds low-cost projects in rural and urban King County that enhance and restore streams and wetlands. Projects occur on both public and private land and are selected based upon the benefit they will provide to the environment and the cost-efficiency with which they can be implemented.

**Mason Bowles 206.477.4651 | [mason.bowles@kingcounty.gov](mailto:mason.bowles@kingcounty.gov)**

### **Lake Stewardship County Lakes Volunteer Monitoring Program**

The Lake Stewardship Program works with trained volunteers to study and monitor the health of King County’s small lakes. Volunteer citizen scientists are provided with technical assistance and education regarding a variety of lake-related topics and concerns.

**Chris Knutson 206.477.4739 | [chris.knutson@kingcounty.gov](mailto:chris.knutson@kingcounty.gov)**

### **Noxious Weed Control Program**

King County provides education and technical assistance to landowners and public agencies to help them find the best control options for noxious weeds on each site and to reduce the overall impact of noxious weeds throughout the county. [www.kingcounty.gov/weeds](http://www.kingcounty.gov/weeds)

**Steven Burke 206.477.9333 | [Steven-J.Burke@kingcounty.gov](mailto:Steven-J.Burke@kingcounty.gov)**

### **Lake Weed Watcher Program**

Volunteers are trained to survey for aquatic weeds in King County small lakes. The goal is to watch for invasive weeds that are not currently known to occur in King County or that have a very limited distribution, but have the potential to spread and cause damage. Seasonal [www.kingcounty.gov/environment/animalsAndPlants/noxious-weeds/weed-watchers/lake-weed-watchers.aspx](http://www.kingcounty.gov/environment/animalsAndPlants/noxious-weeds/weed-watchers/lake-weed-watchers.aspx)

**Ben Peterson 206.477.4724 | [ben.peterson@kingcounty.gov](mailto:ben.peterson@kingcounty.gov)**

### **Knotweed Control on Rivers**

Control of invasive knotweed and other invasive plants along the Cedar River, Snoqualmie River and Green River, and Soos Creek and tributaries. On-going, seasonal [www.kingcounty.gov/environment/animalsAndPlants/noxious-weeds/knotweed-control-projects.aspx](http://www.kingcounty.gov/environment/animalsAndPlants/noxious-weeds/knotweed-control-projects.aspx)

**Steven Burke 206.477.4639 | [Steven-J.Burke@kingcounty.gov](mailto:Steven-J.Burke@kingcounty.gov)**

## **PERMITTING & ENVIRONMENTAL REVIEW PLANNING PROJECTS (NEW)**

### **2017-18 Code Updates**

Transmit an omnibus zoning code amendment pack- ▶

---

**Permitting & Environmental Review continued**

age including amendments to shoreline and critical area regulations and adding sustainable development standards. Shorelines code amendments (KCC 21A.25) and regular zoning code amendments were both transmitted to Council in 2017 and are awaiting Council action. Council adoption expected in 2018

**Lisa Verner 206.477.0304 | [lisa.verner@kingcounty.gov](mailto:lisa.verner@kingcounty.gov)**

Transmit an ordinance updating the zoning code by defining agriculture and including all agricultural activities and related agricultural supportive or dependent uses in the Resource land use table and allowing agricultural supportive uses on non-agricultural lands adjacent to the agricultural production districts. Amendments have been transmitted to Council and are anticipated to be adopted December 4, 2017.

**Randy Sandin 206.477.0378 | [randy.sandin@kingcounty.gov](mailto:randy.sandin@kingcounty.gov)**

**2016 King County Comprehensive Plan – DPER Work Plan Items**

2016 King County Comprehensive Plan – DPER Work Plan Items

Item #5: KCC Implementation Study. Work underway. Due 12/31/2019

Item #6: Alternative Housing Study. Work underway. Due 12/31/2020

Item #8: Cottage Housing. Work to start in 2018. Due 12/31/2018

Item #11: Bicycle Network Study. Work to be transmitted to Council in December, 2017

Item #12: Ingress/Egress Study. Work to start in 2018. Due 12/31/2018

**Lisa Verner 206.477.0304 | [lisa.verner@kingcounty.gov](mailto:lisa.verner@kingcounty.gov)**

**Customer Green Building Education**

Quarterly outreach public meetings for residents of unincorporated KC on various green building techniques which can be incorporated into their new building and redevelopment plans, per commitment in 2015 SCAP. Throughout 2017 and 2018

**Lisa Verner 206.477.0304 | [lisa.verner@kingcounty.gov](mailto:lisa.verner@kingcounty.gov)**

**Construction and Demolition Waste Diversion Ordinance**

Transmit an ordinance requiring construction and demolition waste diversion for unincorporated King County. Includes research and development of an ordinance requiring contractors and DIY builders to re-use, recycle and otherwise divert from the landfill the waste materials generated by their building projects in unincorporated KC. A draft ordinance has been reviewed by DPER and by Green Tools (Kinley Deller); details regarding how to best achieve compliance are under review. Transmittal to Council is anticipated in 1st Quarter 2018.

**Lisa Verner 206.477.0304 | [lisa.verner@kingcounty.gov](mailto:lisa.verner@kingcounty.gov)**

---

**PLANNING PROJECTS (COMPLETED)****2016 King County Comprehensive Plan Update**

The 2016 update was the fifth major review of the King County Comprehensive Plan. During this four-year review cycle, substantive changes to policies, land use designations and the Urban Growth Area boundary were proposed. Adopted by King County Council in December 2016.

**PERMITTING PROJECTS (COMPLETED)****Landslide Hazard Mapping**

Completed work on updating landslide hazard mapping for all of unincorporated King County outside of the Forest Production District. 3rd Quarter 2016.

**ACCELA Access**

Improved functionality of the department's permit tracking software, Accela Automation. Priorities include improving citizen access, reporting, and ultimately on-line permitting. Phase I completed December 2016.

**PLANNING PROJECTS (ONGOING)****Marijuana Legislation**

Efforts continue to refine, administer and implement King County's recently amended marijuana regulations.

**Jake Tracy 206.263.0875 | [jtracy@kingcounty.gov](mailto:jtracy@kingcounty.gov)**

**PERMITTING PROJECTS (ONGOING)****Online Permitting**

Launched online submittal and issuance of residential mechanical permits Feb. 2016 with credit card payment via Accela. (Update: 80% of all mechanical permits filed with DPER were received electronically within the first 4 months after the launch.)

**John Backman 206.477.0447 | [john.backman@kingcounty.gov](mailto:john.backman@kingcounty.gov)**

**MyBuildingPermit.Com (MBP)**

King County will join MBP in 2017 enabling additional online permit submittals and credit card payments. This MBP launch will contain 3 permit types - mechanical, registered, and basic plans. Other permit types will be phased in over time.

**John Backman 206.477.0447 | [john.backman@kingcounty.gov](mailto:john.backman@kingcounty.gov)**

---

**PROSECUTING ATTORNEY****Office Overview**

- The King County Prosecuting Attorney's Office employs over 500 people, including 210 attorneys.
- The Criminal Division represents the state and the county in criminal matters in the King County District and Superior Courts, the state and federal courts of appeal, and the Washington and U.S. Supreme Courts. The Criminal Division is responsible for prosecuting all felonies in King County and all misdemeanors in unincorporated areas of King County. ▶

### **Prosecuting Attorney continued**

- The Civil Division is the County's law firm. It serves as legal counsel to the Metropolitan King County Council, the County Executive and all Executive agencies, the Superior and District Courts, the County Assessor, independent boards and commissions, and some school districts. The division litigates cases on behalf and in defense of its clients, provides legal advice and assistance on all sorts of questions and projects, and issues formal written legal opinions from time to time.
  - The Family Support Division is an integral part of the federal and state child support system. The deputies establish paternity for children born out of wedlock, ensure support obligations are enforced, and modify support amounts when necessary.
- Emerging Programs and Policy Overview**
- 180 Diversion Program –diverts over 350 King County youth per year since 2011. In collaboration with community leaders, the PAO host motivational workshops for youth arrested for committing a misdemeanor violation. The purpose of the workshop is to help the youth identify their strengths, weaknesses, and provide tools to assist in making better decisions.
  - Truancy Dropout Prevention Program—over 1200 petitions against truant youth are filed in juvenile court. In an attempt to reengage the youth and their family, the KCPAO hosts reengagement workshops to help identify what is preventing school attendance and with the help of the youth, their parent or guardian, and the school representative, an individualized education reengagement plan is developed.
  - LEAD (Law Enforcement Assisted Diversion)—is a law enforcement diversion program that allows police officers to divert those engaged in a minor criminal act into services intended to address a drug addiction, mental health concern, homelessness, or some other root cause that informed their decision to engage in criminal conduct.
  - Decriminalized DWLS 3 Cases—in August of 2014, the KCPAO modified its policy on the prosecution of DWLS 3 cases and the Office no longer pursues DWLS 3 cases. In addition, upon the decision to decriminalize these cases by making them a traffic infraction, we recalled all outstanding warrants related to a DWLS 3 matter.
  - FIRS (Family Intervention Reconciliation Services) are a youth diversion program that will divert youth who have been arrested due to a domestic violence interaction with a parent or sibling. In looking at juvenile data, DV cases make up 17% of the juvenile unit caseload and of that 17%, 30% involve youth of color. Instead of prosecuting these cases, FIRS is a crisis intervention strategy. The PAO is in the process of modifying policy and practice to divert these cases to a

crisis intervention program that will address the needs of the youth and their family.

- CJP (Community Justice Project) is a civil remedy project in which the PAO uses its municipal authority in under-served marginalized communities in unincorporated King County (White Center and Skyway) to address blighted properties that have become crime magnets. In partnership with the Department of Permitting and Environmental Services, the King County Sheriff's Office, and other King County agencies, the goal of the PAO is to prioritize safety issues identified by the community to increase public safety in underserved communities using civil remedies as an enforcement tool instead of the traditional criminal prosecution.

### **Community Engagement**

The PAO routinely participates in public speaking events in which a discussion about criminal justice reform and the impact on communities with a focus on those communities most impacted by crime. The community engagement strategy includes presentations to the community discussing the emerging trends impacting the criminal justice system and PAO criminal justice reform strategies. Emerging trends that the PAO covers in community presentations include:

- Exclusionary School Discipline Practices
- Recidivism
- Racial and Ethnic Disproportionality
- Mental Health Reform
- Sentence Reform
- Drug Reform
- Prison Reform
- More Education/Vocational Opportunities
- More Mental Health Services
- Creation of a Sustainable Reentry System
- Remove unnecessary barriers to reentry

### **Administration / Human Resources**

206.477.1200 | 206.296.9013 FAX

#### **Civil Division**

206.477.1120 | 206.296.0191 FAX

#### **Criminal Division**

206.296.9000 Seattle | 206.296.0955 FAX

206.205.7400 Kent | 206.205.7475 FAX

206.477.3044 Juvenile Section | 206.296.8869 FAX

#### **District Court Unit**

206.477.1290 Seattle - West Division | 206.296.2901 FAX

206.477.2060 MRJC - South Division | 206.205.6145 FAX

206.477.3150 Redmond - East Division | 206.296.3643 FAX

#### **Economic Crimes Unit**

206.477.3733 | 206.296.9009 FAX

#### **Family Support Division**

206.296.9020 Seattle | 206.296.9581 FAX

206.296.9595 Kent | 206.296.8501 FAX

#### **Media / Press Information**



---

**Prosecuting Attorney continued**

206.477.9169 Whitney Keyes, Communications Director  
206.247.2446 Mobile | 206.296.9013 FAX  
Press Only Media Inquiries: [mediainquiryprosecutor@kingcounty.gov](mailto:mediainquiryprosecutor@kingcounty.gov)

**Northeast District Court**

206.477.3150 | Email: [ProsecutorNE@kingcounty.gov](mailto:ProsecutorNE@kingcounty.gov)

**Protection Orders**

206.477.1103 Seattle | 206.205.8329 FAX  
206.477.3757 Kent | 206.205.7410 FAX  
206.205.7012 Redmond / Northeast District Court  
206.296.0592 FAX

**Public Disclosure Requests**

King County Prosecuting Attorney  
ATTN: Public Disclosure Unit  
King County Courthouse  
516 3rd Avenue, Room W400  
Seattle, WA 98104

Printable copy of the Public Records Request Form.  
206.477.3296 Kristie Johnson, Public Records Officer

**School Violence Prevention**

206.477.3044 Juvenile Section

**Truancy**

206.477.4336, Samaneh Alizadeh, Deputy Prosecuting Attorney

**Victim Assistance**

206.477.3742 Seattle | 206.205.6104 FAX  
206.206.477-3757 Kent | 206.205.7475 FAX  
206.477.3035 Juvenile Section, Seattle | 206.296.8838 FAX

---

**PUBLIC DEFENSE**

The Department of Public Defense provides legal counsel and representation to indigent persons in criminal, juvenile, involuntary treatment, dependency and civil contempt legal proceedings in King County Superior and District Courts and Seattle Municipal Court.

**Melanie Oberlander** 206.477.9247 | [Melanie.oberlander@kingcounty.gov](mailto:Melanie.oberlander@kingcounty.gov)  
Main Office: 206.296.7662

---

**PUBLIC HEALTH, SEATTLE & KING COUNTY  
Community Health Services****Health insurance access and outreach**

Coordinate with partners on communication, outreach and enrollment activities to inform residents of improved access to government provided or subsidized health insurance as a result of federal healthcare reform.  
<http://www.kingcounty.gov/depts/health/locations/health-insurance.aspx>

**Daphne Pie** 206.263.8369 | [daphne.pie@kingcounty.gov](mailto:daphne.pie@kingcounty.gov)

**ON GOING****Prevention****Communicable diseases, Public Health laboratory, Medical Examiner Office and vital statistics**

Conduct surveillance and investigation for all communicable diseases. Includes program and/or clinical services in HIV/AIDs, sexually transmitted diseases,

tuberculosis, child vaccine distribution, immunization promotion, and public health laboratory services. Provides birth and death certificates and review of causes of death in King County.

<http://www.kingcounty.gov/depts/health/communicable-diseases.aspx>

**Donna Allis** 206.291.4517 | [donna.allis@kingcounty.gov](mailto:donna.allis@kingcounty.gov)

**Chronic Disease & Injury Prevention**

**Chronic disease & injury prevention, women's health, tobacco**  
Chronic disease services including tobacco and obesity prevention, screening services for breast, cervical and colon cancer, diabetes and asthma services through community health workers, and violence and injury prevention services.

<http://www.kingcounty.gov/depts/health/chronic-diseases.aspx>

**Mariel Torres Mehdipour** 206.477-8620 | [mariel.torresmehdipour@kingcounty.gov](mailto:mariel.torresmehdipour@kingcounty.gov)

**Jail Health Services****Inmate services**

Provide necessary medical, psychiatric, and dental services to detained persons in correctional facilities in the King County correctional facilities in Kent and Seattle so inmates receive constitutionally guaranteed health services that meet community and professional standards of care.

**Bette Pine** 206.263.8284 | [bette.pine@kingcounty.gov](mailto:bette.pine@kingcounty.gov)

**Community Health Services****Healthcare services**

Provide center based and regional services which may include WIC, Family planning, primary care, maternity support services, oral health, refugee health, pharmacy, home nursing, healthcare access assistance, healthcare for the homeless, school-based health, and childcare health and other services.

<http://www.kingcounty.gov/depts/health/locations.aspx>

**Jerry DeGriek** 206.263.1330 | [jerry.degriek@kingcounty.gov](mailto:jerry.degriek@kingcounty.gov)

**Preparedness Section****Preparedness**

Support preparedness efforts of healthcare organizations, local governments, businesses, community organizations, and the public to respond and recovery quickly from all hazards including weather incidents, earthquakes, disease outbreaks, and acts of terrorism.

<http://www.kingcounty.gov/depts/health/emergency-preparedness.aspx>

**Carina Elsenboss** 206.263.8722 | [carina.elsenboss@kingcounty.gov](mailto:carina.elsenboss@kingcounty.gov)

**Environmental Health****Environmental public health services**

Permitting and inspection services for businesses and individuals, including food business, food worker, solid waste, plumbing and gas piping, drinking water, and septic systems. Promote health and well-being of all county residents with equity and social justice work, healthy community planning, climate change, local ▶

---

**Public Health continued**

hazardous waste, lead and toxics, veterinary services and zoonotic disease programs.

<http://www.kingcounty.gov/depts/health/environmental-health.aspx>

**Ngozi Oleru 206-263-8476 | ngozi.oleru@kingcounty.gov**

**Emergency Medical Services**

**Assure high quality emergency medical services**

Coordination of pre-hospital emergency services and provision of regional leadership through partnerships with cities and fire departments to assure the uniformity of medical care and dispatch across jurisdictions, consistency and excellence in training, and medical quality assurance. Focus areas include Medical Direction, EMS Training, Community Programs, Strategic Planning and Data Management, and Administration including Regional Leadership and Financial Management.

<http://www.kingcounty.gov/depts/health/emergency-medical-services.aspx>

**Michele Plorde 206.263.8579 | michele.plorde@kingcounty.gov**

---

**KING COUNTY SHERIFF'S OFFICE**

The King County Sheriff's Office consists of over 1,100 commissioned and professional staff employees who provide services to unincorporated King County and our contract partners. These services include 9-1-1 dispatch, community patrol and emergency response, criminal investigations, traffic safety, transit police, search & rescue, sheriff's civil function, concealed weapons licensing, fingerprinting, records, etc.

The Sheriff is the chief executive officer and conservator of the peace of the county. The mission of the King County Sheriff's Office is to be a trusted partner in fighting crime and improving the quality of life for our residents and guests. We strive to achieve our mission by our work on the following goals: a) Develop and sustain public trust, value and support. b) Reduce crime and improve the community's sense of security. c) Improve traffic safety by reducing impaired and unsafe driving behaviors and traffic collisions. d) Recruit, hire, train and promote the best people, reflective of the community we serve, to provide high quality, professional and responsive service. e) Provide facilities, equipment and technology that support achievement of our mission. f) Prepare to respond to and resolve critical incidents and disasters.

Most of the services you receive are deployed out of one of the Sheriff's Office Precincts. Precinct supervisors work closely with their deputies and detectives to identify crime trends, hot-spot locations and the repeat offenders that are most damaging to your community. They then develop investigative plans to investigate and prosecute those offenders in a coordinated manner with other

agencies and the prosecuting attorney's office. Similarly, areas with high numbers of traffic collisions are focused on, along with impaired and unsafe driving behaviors, to reduce the harm that results from collisions.

Deputies are assigned to fairly consistent areas. This allows them to become familiar with residents, businesses, schools, and the overall community in their assigned patrol areas. They are expected to build relationships and learn the particular problems in an area or neighborhood, to include their focus on crime trends, traffic safety and quality of life issues. Bottom line, we want people to be and feel safe while at home, work, school and while traveling!

Our Precincts are referred to as Precincts #2, #3, & #4...or North, Southeast, and Southwest, respectively. Precinct #2 is in Sammamish City Hall, Precinct #3 is in the Hicks Raburn Precinct located in Maple Valley, and Precinct #4 is in downtown Burien.

On behalf of the men and women of the King County Sheriff's Office, thank you for the honor of serving you.

Mitzi Johanknecht, King County Sheriff

**Command Structure**

Pct. #2 – North Precinct Robin Fenton 206.263.9133

Pct. #3 – Southeast Precinct Major Troy Olmsted 206.477.6446

Pct. #4 – Southwest Precinct Major Bryan Howard 206.477.2200

**Other:**

Internal Investigations 206.263.2525

Communications Center 911 (Emergency)

206.296.3311 (Non-emergency)

King County Office of Emergency Management 206.296.3830

King County Road Services Hotline 206.477.8100

---

**TRANSPORTATION**

**Road Services Division**

**Drainage**

229th Drive SE, south of May Valley Road culvert scour repair Completed

Design in 2016 – 2017, construction in 2018 Contact:

[community.relations@kingcounty.gov](mailto:community.relations@kingcounty.gov) or 206-477-3840

**SE May Valley Road, between #15019 and #15125 Completed**

New fish passable concrete box culvert installed. Constructed 2017.

[community.relations@kingcounty.gov](mailto:community.relations@kingcounty.gov) | 206.477.3840

**SE May Valley Road between #16924 and #17330 Completed**

Enclosed north side ditch with new underground ▶

**Transportation continued**

pipe conveyance system. Constructed 2017.  
[community.relations@kingcounty.gov](mailto:community.relations@kingcounty.gov) | 206.477.3840

**Traffic Operation**

Issaquah-Hobart Road SE corridor – King County role Complete – City of Issaquah is the lead on this project The County coordinated with the City of Issaquah and WSDOT to reduce congestion, 2016

**COUNTYWIDE PROJECTS AND PROGRAMS**

**Pavement Preservation Program (Road Resurfacing)**  
Locations for 2018 are still being finalized. Check website for updates [www.kingcounty.gov/paving](http://www.kingcounty.gov/paving)

**High Collision Safety**

Locations for 2018 are still being finalized. Work includes High Friction Surface Treatment and signal, sign, marking and sight line improvements.

**ONLINE RESOURCES**

**24/7 Road Helpline**

In unincorporated King County, contact us for help

with road maintenance and traffic safety issues, such as downed stop signs, signals that are out or trees over the roadway — 24 hours a day, seven days a week.  
206.477.8100 | 800.527.6237 | [maint.roads@kingcounty.gov](mailto:maint.roads@kingcounty.gov)

**My Commute**

Travel tools and resources for the greater Puget Sound area – Commuting resources – road closures, restrictions, and traffic cameras.  
[www.kingcounty.gov/mycommute](http://www.kingcounty.gov/mycommute)  
[webteam.roads@kingcounty.gov](mailto:webteam.roads@kingcounty.gov)

**Road Alert**

Find travel alert information about road closures or conditions that have a significant impact on roads in Unincorporated areas of King County. Email subscription services available.  
[www.kingcounty.gov/roadalert](http://www.kingcounty.gov/roadalert) • [webteam.roads@kingcounty.gov](mailto:webteam.roads@kingcounty.gov)



**The Local Service Initiative proposes a new Department that:**

- Creates cabinet-level representation
- Responds to local needs
- Improves service delivery

**Creation**

The proposed Department of Local Services is a comprehensive effort to improve the delivery of efficient, effective, and timely municipal services to the nearly 250,000 residents of unincorporated King County. In consultation and partnership with the Council, whose members directly represent residents in the unincorporated areas, we are creating a best-run local government to accompany the Executive's best-run regional government.

**Collaboration**

We are aligning Executive-branch agencies by collaborating, sharing resources, and creating service partnerships that reinforce mutual accountability. This coordinated approach will improve local service in King County and benefits the County as a whole.

**Customer-Driven**

We work every day to improve the lives of the people we serve. That means consistently monitoring and evaluating our performance to ensure we deliver value to our customers. By focusing on our customers' experience, and integrating continuous improvement methods into our work, our employees will remove roadblocks and achieve results that make a difference.

**Connection**

Unincorporated area residents deserve one, dedicated Executive-branch partner who listens, collaborates and works to advance their interests. We are working to ensure there is always a place at the table for more voices to help inform how we deliver critical services. We are committed to problem-solving and taking concrete actions to keep our communities connected and running strong. The Department of Local Services will be the conduit that drives enhanced communication between Executive-branch agencies and unincorporated area community members.



**Share your thoughts**

Email [asklocalservices@kingcounty.gov](mailto:asklocalservices@kingcounty.gov)

**Alternative Formats Available**

206-477-4700 TTY Relay: 711