

King County Lake Bathymetric Maps

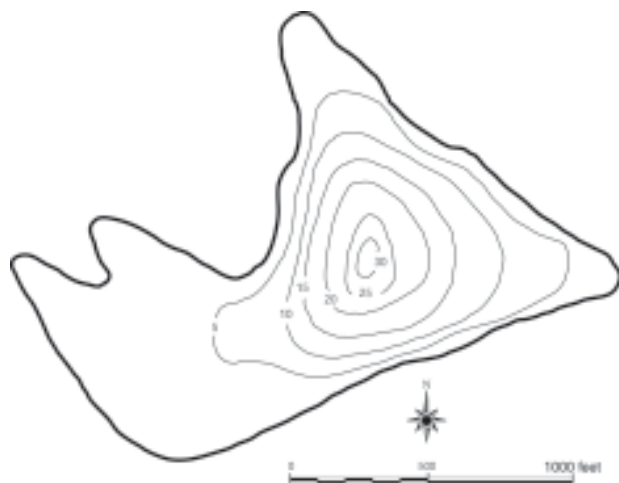
Following are bathymetric map for each lake included in the Lake Stewardship Program in King County. Bathymetric maps for several lakes monitored by volunteers could not be located. These include lakes Allen, Easter, Horseshoe, and Walsh. Both Francis and Horseshoe are known to be relatively shallow. The shape of the bottom of Walsh Lake is not known at this time.

Many of the bathymetric maps were made by the Washington Department of Fisheries as part of their work regulating sport fishing in the lakes of Western Washington (Wolcott 1964) and were based on surveys that measured depth across transects using sounding lines. Some of these may contain small errors or may now be out of date due to changes in land use in the watersheds and along shorelines.

The bathymetric maps are reproduced to fit on an 8.5" x 11" page format. As a result the scale for each map is different. Please make a note of this when comparing lake maps.

Lake Bathymetric Maps

Alice



Allen

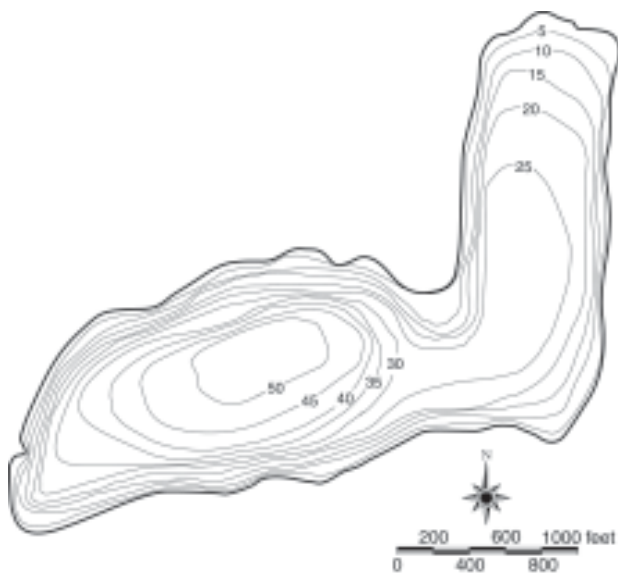
No bathymetric map available.



Ames



Angle



Bathymetric maps were obtained from Wolcott (1964).

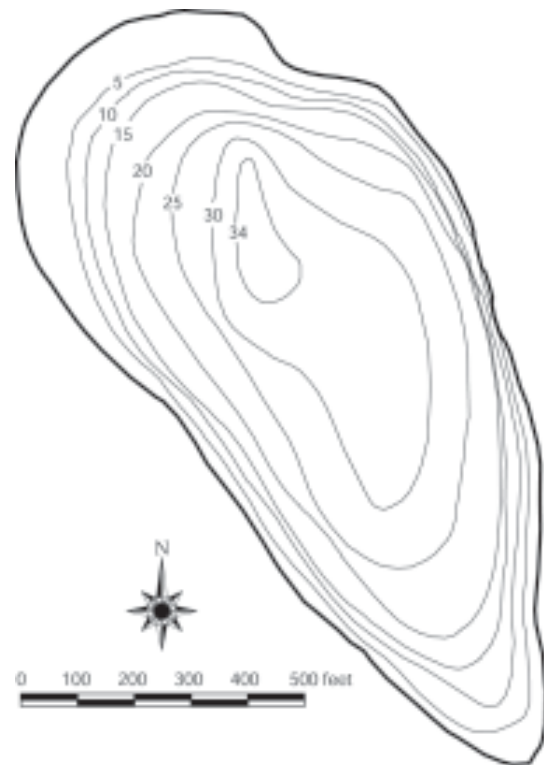
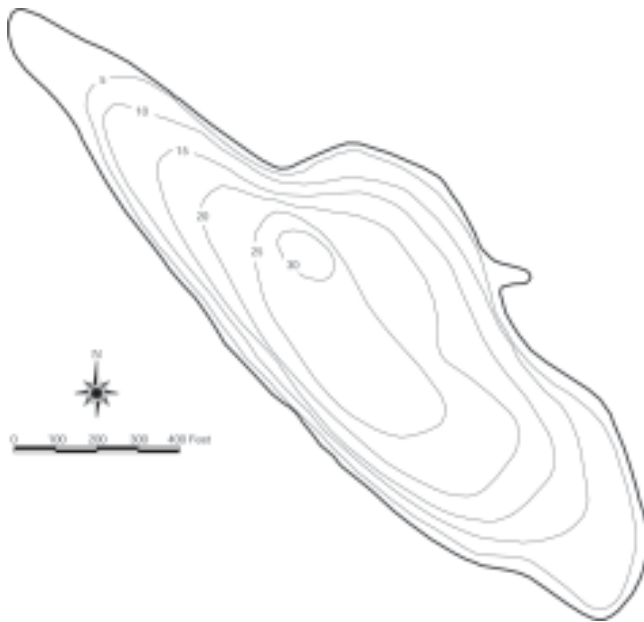
Lake Bathymetric Maps

Beaver Lakes 1 and 2



Bitter

Boren



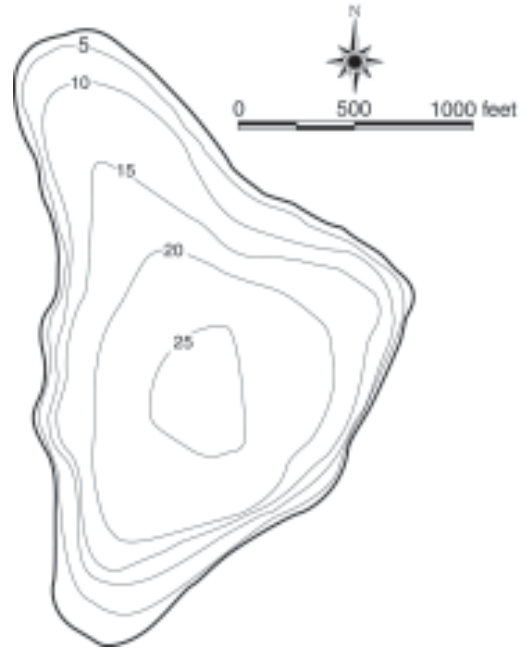
Bathymetric maps were obtained from Wolcott (1964).

Lake Bathymetric Maps

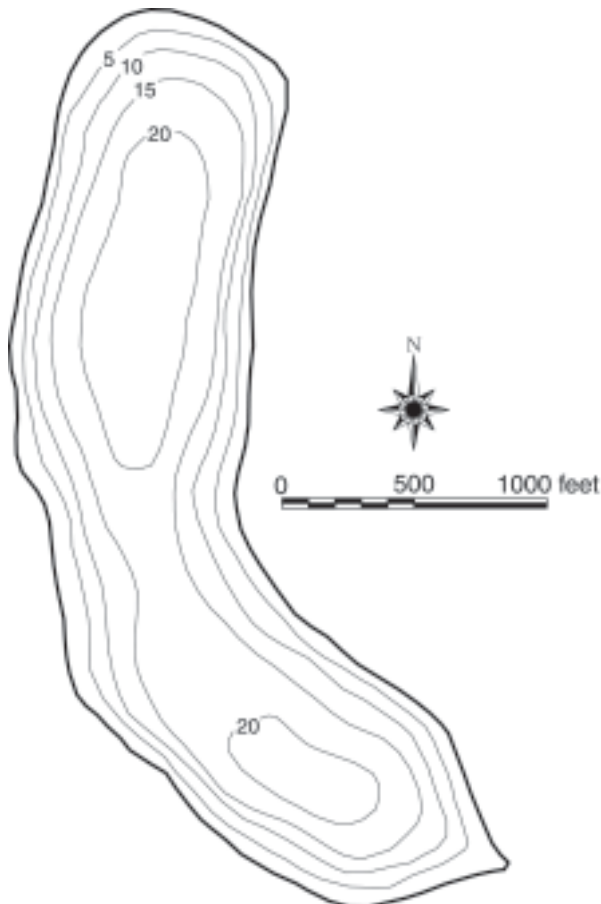
Burien



Cottage



Desire



Easter

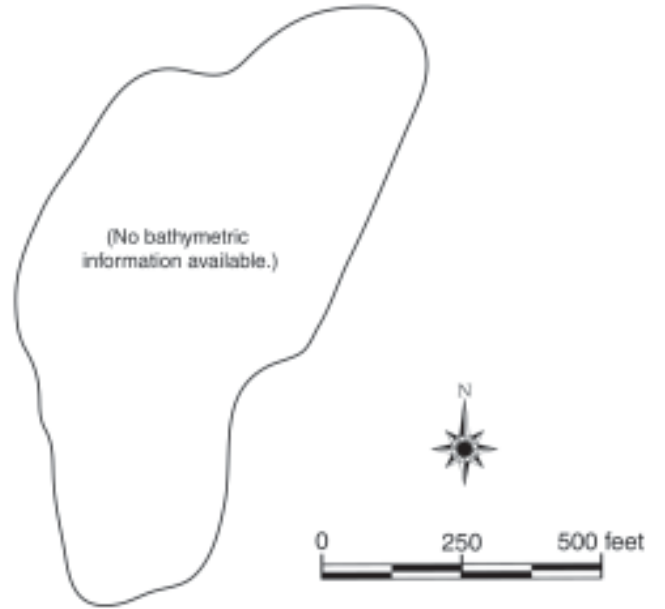
No bathymetric map available.



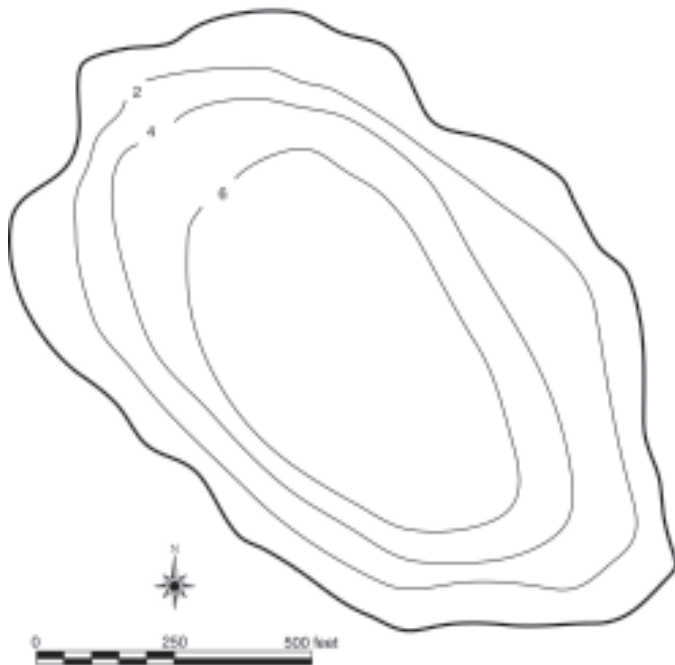
Bathymetric maps were obtained from Wolcott (1964).

Lake Bathymetric Maps

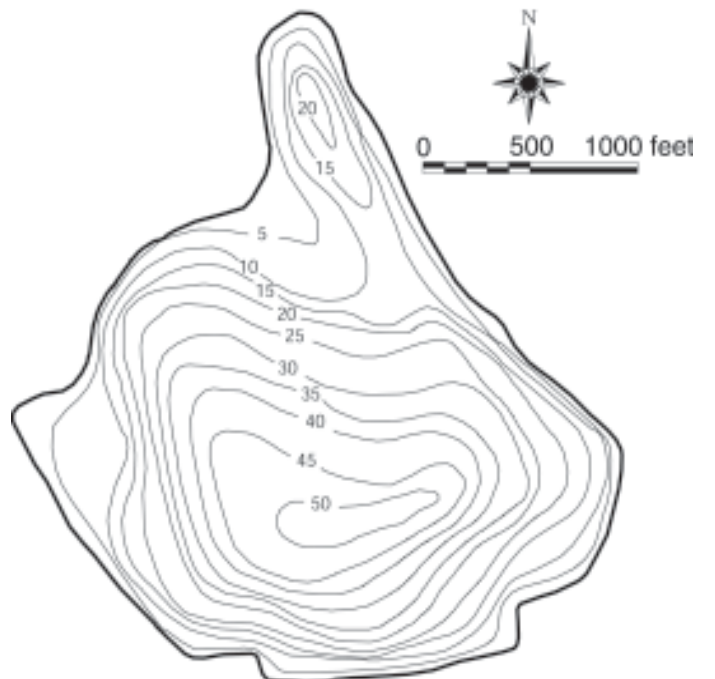
Haller



Jones



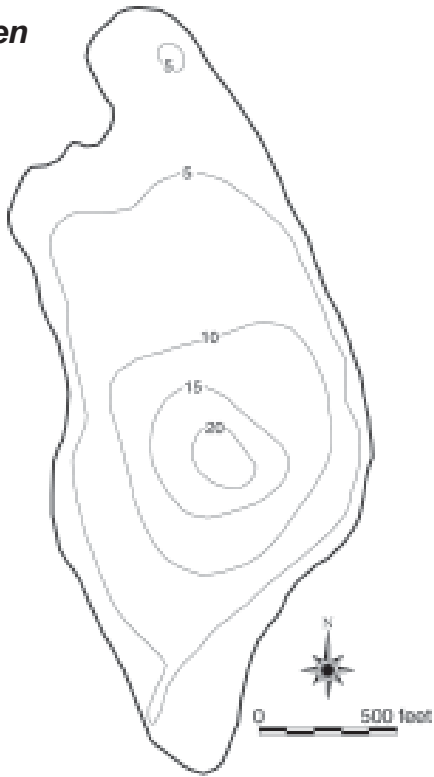
Joy



Bathymetric maps were obtained from Wolcott (1964).

Lake Bathymetric Maps

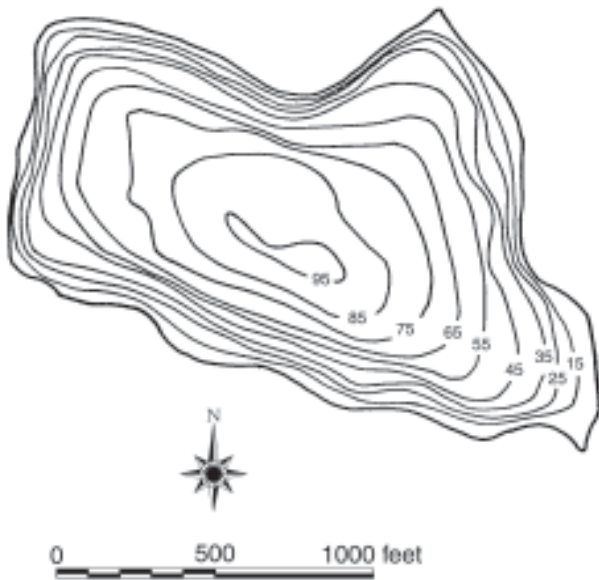
Kathleen



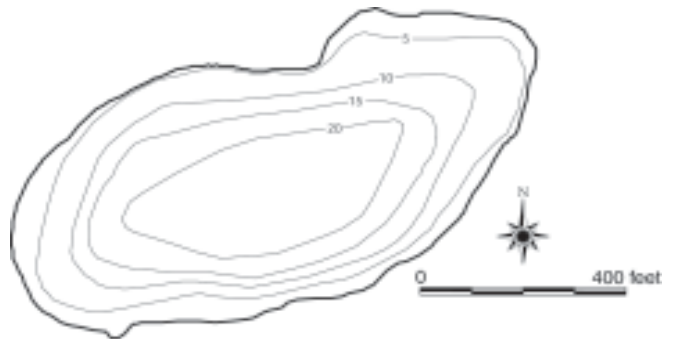
Killarney



Langlois



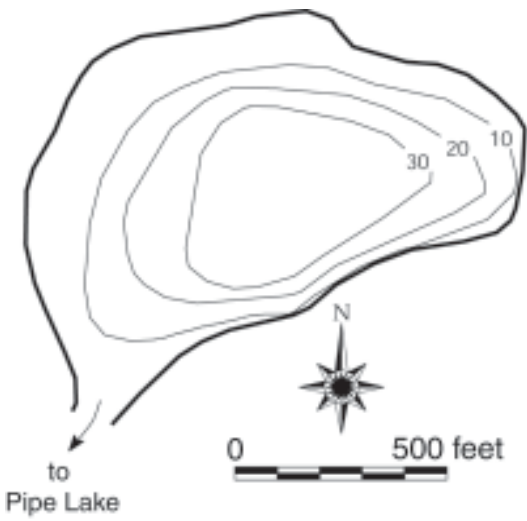
Leota



Bathymetric maps were obtained from Wolcott (1964).

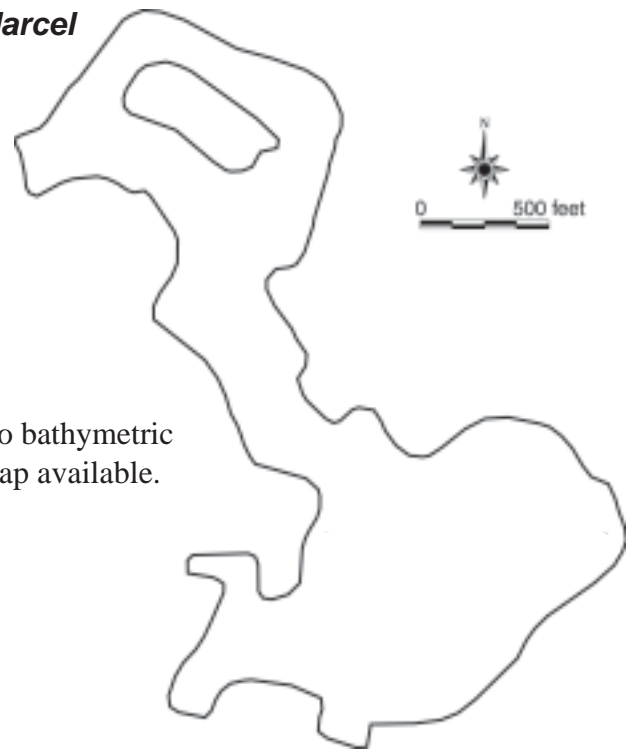
Lake Bathymetric Maps

Lucerne



Marcel

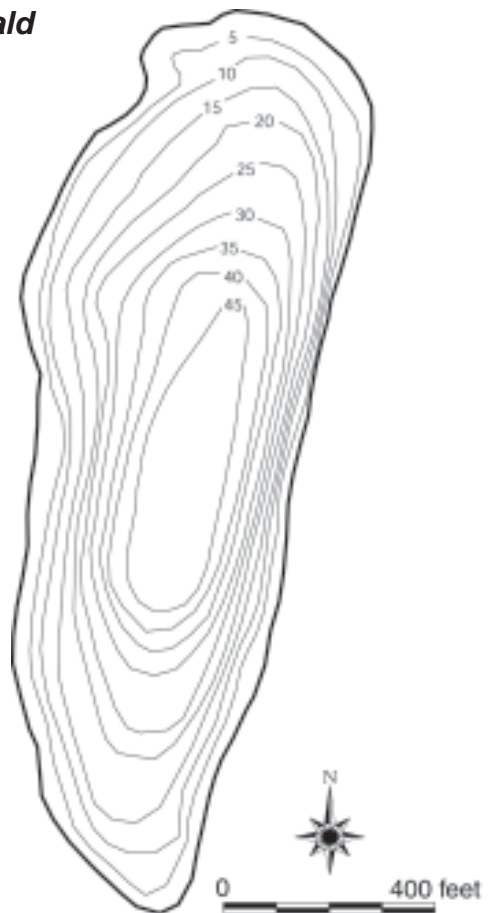
No bathymetric map available.



Margaret



McDonald



Bathymetric maps were obtained from Wolcott (1964).

Lake Bathymetric Maps

North



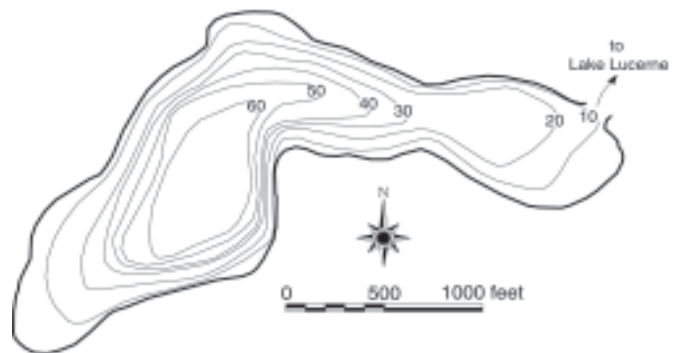
Paradise



Pine



Pipe



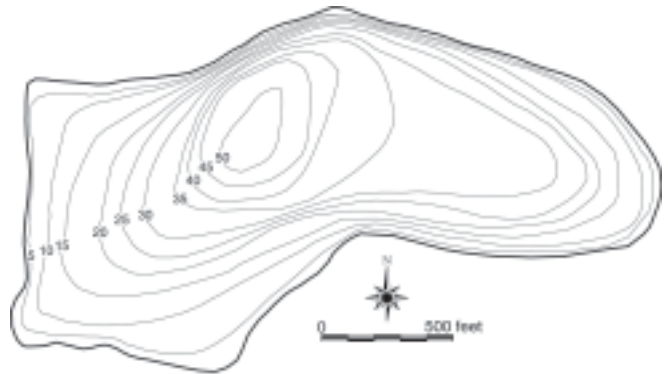
Bathymetric maps were obtained from Wolcott (1964).

Lake Bathymetric Maps

Ravensdale



Retreat



Sammamish



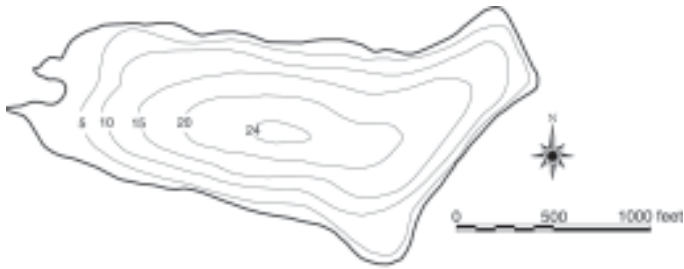
Sawyer



Bathymetric maps were obtained from Wolcott (1964).

Lake Bathymetric Maps

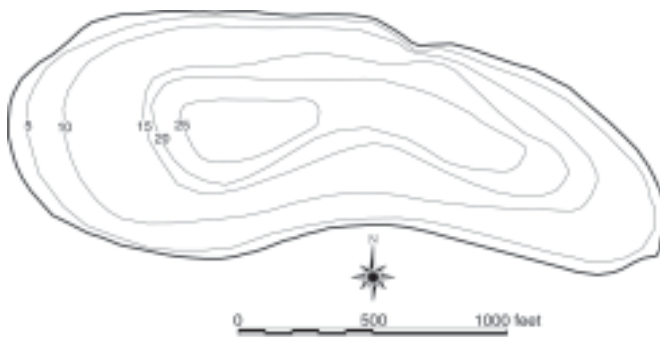
Steel



Trout



Twelve



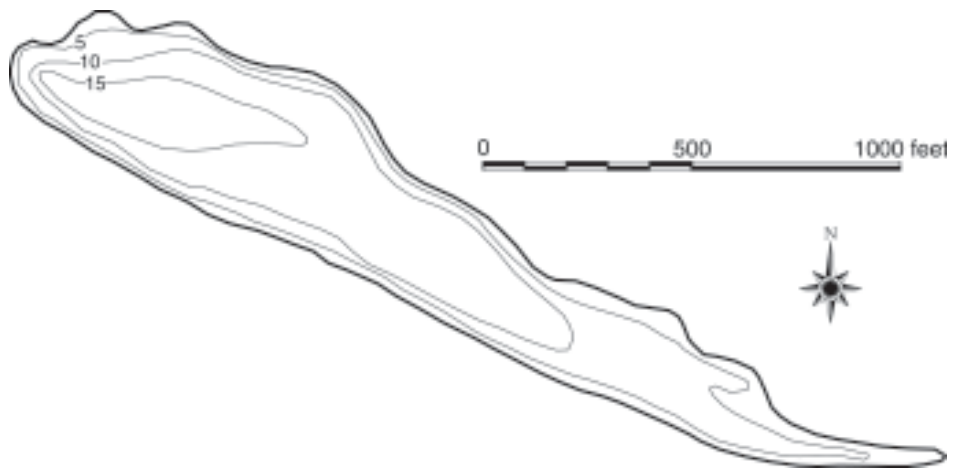
Walsh



Bathymetric maps were obtained from Wolcott (1964).

Lake Bathymetric Maps

Welcome



Wilderness



Bathymetric maps were obtained from Wolcott (1964).

Lake Bathymetric Maps

Yellow



Bathymetric maps were obtained from Wolcott (1964).

King County Lake Stewardship Program