

# Sammamish

## Lake Overview

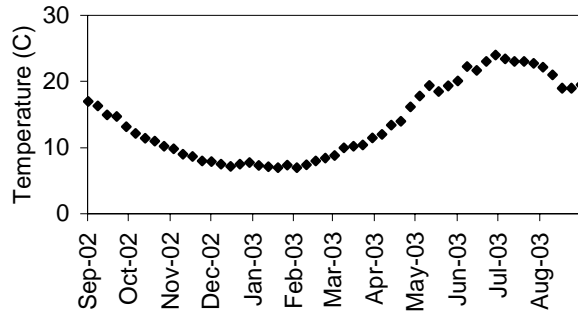
Volunteer monitoring for Level I began at Lake Sammamish in 1999 and has continued through 2003. The lake surface makes up less than 8% of the drainage area, so direct precipitation is less important than inlet streams, stormwater runoff and groundwater. There are multiple jurisdictions around the lake and in the watershed. Two major inlets (Issaquah and Tibbetts Creeks) run through the city of Issaquah, while the outlet exits through King County at Marymoor Park. Current land use is complex and mixed, but much of the watershed is currently experiencing development.

Lake Sammamish has a public access boat launch and several large parks. There is a history of Eurasian milfoil infestation and control efforts in various locations. Residents should watch for new patches of Eurasian milfoil, Brazilian elodea, as well as other listed noxious weeds.

## Physical Parameters

Multiple volunteers measured Secchi transparency off their docks, and when the Secchi could still be seen at lake bottom, it is marked as "6" on the chart. Water levels showed a response to several large precipitation events in January and February, receding slowly through the summer months. Annual water temperatures ranged from 6 to 25.0 degrees Celsius, with close agreement among the volunteer data.

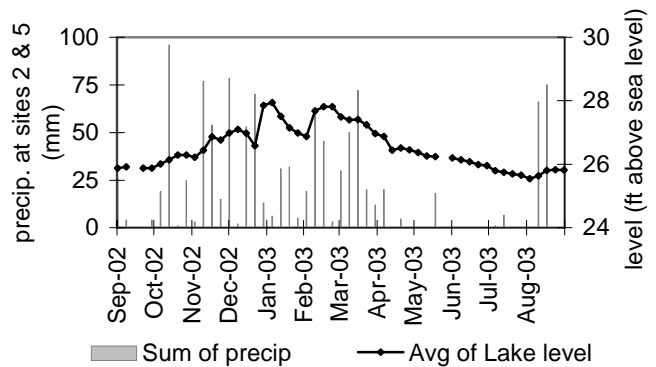
Lake Temperature



Secchi Depth



Lake Level and Precipitation



**Sammamish Sites 2,5**

**2003 Level I Data**

**Site 2 Data Summary\***

Week of	Sum of precip. (mm)	Avg of lake level (ft)	Weekly Secchi (m)	Avg of Temp (°C)
29-Sep-02				
6-Oct-02				
13-Oct-02				
20-Oct-02				
27-Oct-02				
3-Nov-02				
10-Nov-02	52.0	26.0	2.0	11.0
17-Nov-02	1.0		3.5	11.0
24-Nov-02	9.0	26.3	+	10.0
1-Dec-02	4.0	26.2		9.0
8-Dec-02	29.0	26.4	2.5	9.0
15-Dec-02			3.5	
22-Dec-02	15.0	26.8		8.0
29-Dec-02	82.0	27.1	3.0	7.0
5-Jan-03	2.0	27.2	+	
12-Jan-03	29.0	27.0		7.0
19-Jan-03	72.0	27.2	3.0	8.0
26-Jan-03	13.0			8.0
2-Feb-03			+	
9-Feb-03	30.0	27.4		7.0
16-Feb-03				
23-Feb-03				
2-Mar-03				
9-Mar-03	128.0	28.2	3.0	7.0
16-Mar-03	49.0	28.1	2.5	8.0
23-Mar-03	2.0			
30-Mar-03				
6-Apr-03	50.0		+	10.0
13-Apr-03	30.0	27.4	+	10.0
20-Apr-03	4.0	27.2	+	11.0
27-Apr-03	12.0			11.0
4-May-03	20.0		+	
11-May-03	0.0		+	14.0
18-May-03	4.5		+	14.0
25-May-03	0.0			15.0
1-Jun-03	0.0		+	18.0
8-Jun-03	0.0			20.0
15-Jun-03	18.0		3.5	18.0
22-Jun-03			3.0	
29-Jun-03				20.0
6-Jul-03	0.0	26.1	3.5	22.0
13-Jul-03				
20-Jul-03	0.0		+	24.0
27-Jul-03	0.0	25.9		
3-Aug-03	0.0	25.8	3.0	24.0
10-Aug-03	6.0	25.7		
17-Aug-03			+	
24-Aug-03	0.0	25.7		24.0
31-Aug-03	0.0	25.5	3.0	22.0
7-Sep-03	30.0	25.6	+	
14-Sep-03	62.0	25.8	+	20.0
21-Sep-03	0.0		+	20.0
28-Sep-03				20.0
<b>Min</b>	<b>0.0</b>	<b>25.5</b>	<b>2.0</b>	<b>7.0</b>
<b>Max</b>	<b>128.0</b>	<b>28.2</b>	<b>3.5</b>	<b>24.0</b>
<b>Total</b>	<b>753.5</b>			

**Site 5 Data Summary\***

Week of	Sum of precip. (mm)	Avg of lake level (ft)	Weekly Secchi (m)	Avg of Temp (°C)
29-Sep-02	26.0	25.9		
6-Oct-02	4.0	25.9	+	16.0
13-Oct-02				
20-Oct-02	0.0	25.9	+	14.0
27-Oct-02	4.0	25.9	+	12.5
3-Nov-02	19.0	26.0	3.5	11.5
10-Nov-02	44.0	26.2	+	11.0
17-Nov-02	0.0			
24-Nov-02	16.0	26.3	+	11.5
1-Dec-02	2.0	26.2	+	10.0
8-Dec-02	48.0	26.5	2.5	9.0
15-Dec-02	54.0	26.9	+	8.5
22-Dec-02	0.0	26.7	+	8.0
29-Dec-02	75.0	27.1	3.0	8.0
5-Jan-03	0.0	27.0	+	7.5
12-Jan-03	24.0	26.9	+	7.5
19-Jan-03	68.0	27.4	3.5	8.0
26-Jan-03	0.0	28.1	3.0	7.5
2-Feb-03	6.0	27.8	3.5	7.0
9-Feb-03	1.0	27.6	+	7.5
16-Feb-03	32.0	27.1	+	7.0
23-Feb-03	5.0	26.9	+	7.5
2-Mar-03	19.0	26.9	+	7.0
9-Mar-03	60.0	27.9	2.5	8.0
16-Mar-03	42.0	27.9		
23-Mar-03	1.0	27.9	3.0	9.5
30-Mar-03	30.0	27.5	3.0	8.5
6-Apr-03	0.0			
13-Apr-03	42.0	27.4	+	11.0
20-Apr-03	16.0	27.3	+	10.5
27-Apr-03	0.0		+	12.0
4-May-03	0.0			
11-May-03	0.0			
18-May-03	0.0			
25-May-03	0.0			
1-Jun-03	0.0			
8-Jun-03	0.0			
15-Jun-03	0.0			
22-Jun-03				
29-Jun-03	0.0	26.2		
6-Jul-03	0.0	26.2	+	23.5
13-Jul-03	0.0	26.1	3.1	22.0
20-Jul-03	0.0			
27-Jul-03	0.0	26.0	+	
3-Aug-03	1.0	25.8	+	22.5
10-Aug-03	1.0	25.8	+	23.0
17-Aug-03	0.0	25.7	3.2	23.0
24-Aug-03	0.0	25.7	+	23.0
31-Aug-03	0.0	25.6	+	22.0
7-Sep-03	36.0	25.7	+	20.0
14-Sep-03	34.0	25.9	+	19.0
21-Sep-03	0.0			
28-Sep-03	0.0			
<b>Min</b>	<b>0.0</b>	<b>25.6</b>	<b>2.5</b>	<b>7.0</b>
<b>Max</b>	<b>75.0</b>	<b>28.1</b>	<b>3.5</b>	<b>23.5</b>
<b>Total</b>	<b>710.0</b>			

# Sammamish Site 6

# 2003 Level I Data

**Sammamish Site 6 Data Summary\***

Week of	Sum of precip. (mm)	Avg of lake level (ft)	Weekly Secchi (m)	Avg of Temp (°C)
29-Sep-02		25.9	+	17.0
6-Oct-02		25.9	+	16.5
13-Oct-02			+	15.0
20-Oct-02		25.9	+	15.0
27-Oct-02		25.9	+	13.5
3-Nov-02		25.9	+	12.5
10-Nov-02		26.2	+	11.5
17-Nov-02		26.3	+	11.0
24-Nov-02		26.3	+	10.0
1-Dec-02		26.2	+	10.0
8-Dec-02		26.3	3.3	9.0
15-Dec-02		26.9	+	8.8
22-Dec-02		26.7	3.3	8.0
29-Dec-02		26.9	3.3	8.0
5-Jan-03		27.1		7.5
12-Jan-03		27.0	+	7.0
19-Jan-03		26.4		7.3
26-Jan-03		27.8	3.5	7.7
2-Feb-03		28.0	+	7.5
9-Feb-03		27.5	+	7.0
16-Feb-03		27.2	+	7.0
23-Feb-03		27.0	+	7.3
2-Mar-03		26.9	+	7.0
9-Mar-03		27.5	3.8	7.3
16-Mar-03		27.7	3.0	8.0
23-Mar-03		27.8	3.3	8.3
30-Mar-03		27.6	3.5	9.0
6-Apr-03		27.4	3.3	10.0
13-Apr-03		27.5	+	10.0
20-Apr-03		27.3	+	10.3
27-Apr-03		27.1	+	11.5
4-May-03		26.9	+	12.0
11-May-03		26.7	+	13.3
18-May-03		26.6	+	14.0
25-May-03		26.5	+	16.8
1-Jun-03		26.4	+	17.8
8-Jun-03		26.3	+	19.2
15-Jun-03		26.2	+	19.0
22-Jun-03			+	19.3
29-Jun-03		26.2	+	20.2
6-Jul-03		26.1	+	21.8
13-Jul-03		26.0	+	21.5
20-Jul-03		26.0	+	22.8
27-Jul-03		25.9	+	24.0
3-Aug-03		25.8	+	23.5
10-Aug-03		25.8	+	23.0
17-Aug-03		25.7	+	23.0
24-Aug-03		25.6	+	22.0
31-Aug-03		25.6	+	22.3
7-Sep-03		25.6	+	21.5
14-Sep-03		25.8	+	18.0
21-Sep-03		25.8	+	18.5
28-Sep-03		25.8	3.0	19.3
<b>Min</b>	<b>0.0</b>	<b>25.6</b>	<b>3.0</b>	<b>7.0</b>
<b>Max</b>	<b>0.0</b>	<b>28.0</b>	<b>3.8</b>	<b>24.0</b>
<b>Total</b>	<b>0.0</b>			

No Level II Data  
Available For This Lake