

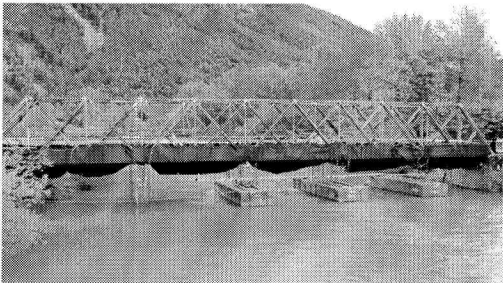
## Floating Structures for Agriculture

Flood and Farm Task Force  
November 1, 2007

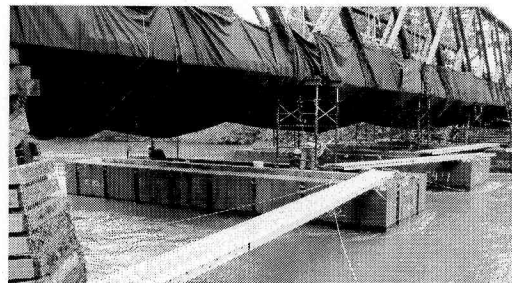
### Options

- Commercial grade pontoons
- Surplus barges
- Homeowner docks
- Owner built

### Commercial Scale Pontoons



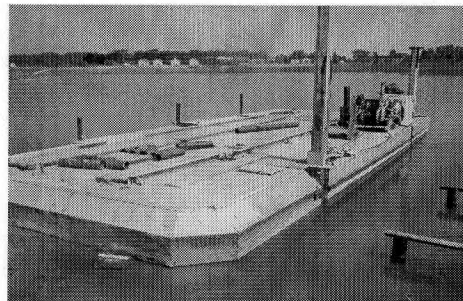
Norman Bridge Demo near North Bend



### Commercial Pontoons

- Modular and truckable (FlexiFloat)
- 30' L x 8' W x 4' D
- 10.5 tons/unit
- \$130/ft<sup>2</sup>

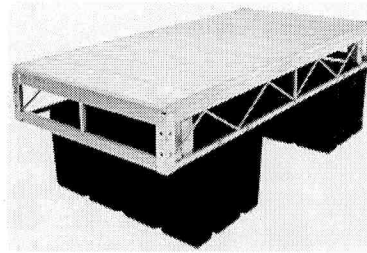
### Surplus Barges



## Surplus Barges

- Availability and cost are variable
- Examples:
  - 40' L x 8' W x 3.5' D Truckable
    - for \$9000 - \$28/ft<sup>2</sup>
  - 50' L x 20' W x 3' D Truckable
    - for \$50,000 - \$50/ft<sup>2</sup>

## Homeowner Docks



## Homeowner Docks

- Example: Retty Corporation
  - 40' L x 20' W w/ capacity of 4000 lbs.
  - \$14,000 or \$17.50/ft<sup>2</sup>

## Owner Built

- ❖ Found or surplus materials
- ❖ Fabricate to own unique needs

### Considerations

- Structurally able to float and sit on ground
- Corrosion
- Anchoring
- Debris exclusion