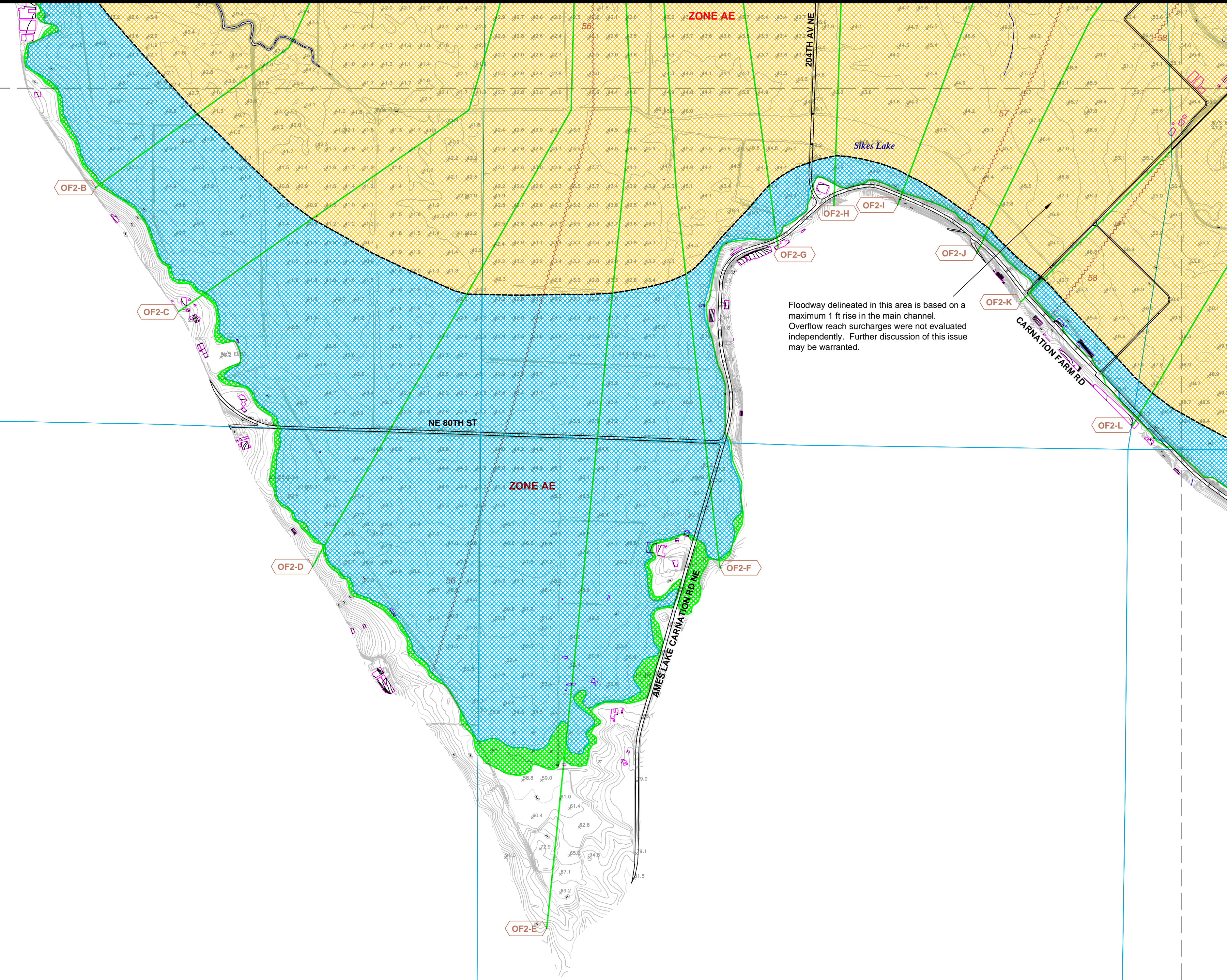


MATCH TO PLATE 8

MATCH TO PLATE 12



BM16

MATCH TO PLATE 11

- Legend**
- Major Contours - 10 foot
 - Minor Contours - 2 foot
 - Spot Elevations
 - Vegetation Lines
 - Ground Not Visible
 - Corporate Boundary
 - RM 3.5 River Mile Marker and Number
 - Railroad
 - PLSS Grid
 - BM27 Elevation Reference Mark and Number

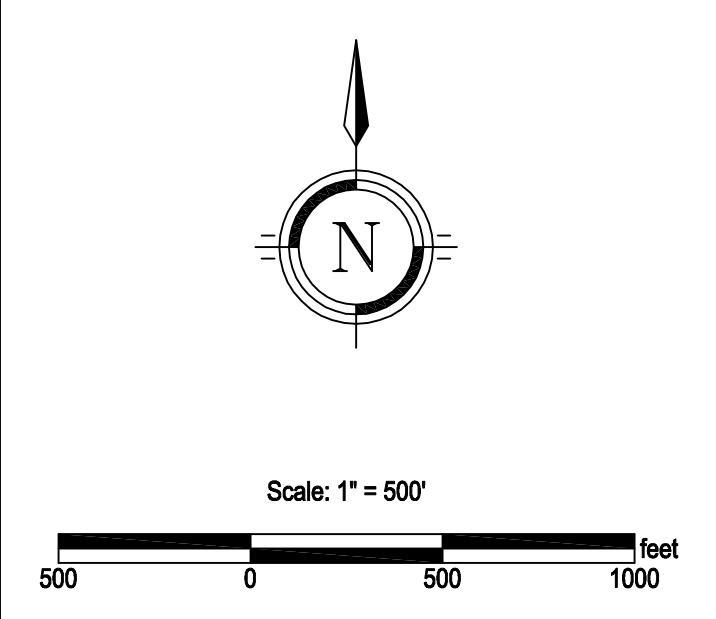
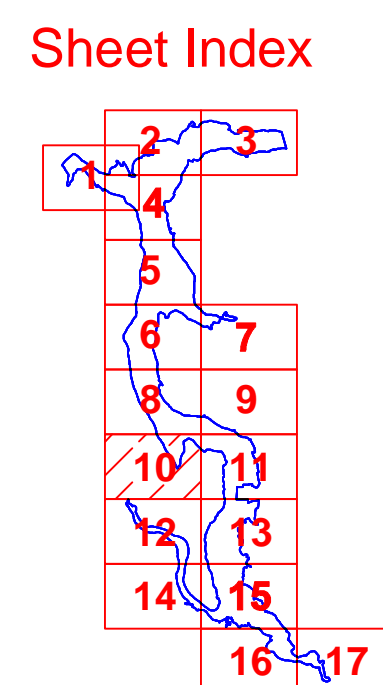
- Structures
 - Edge of Water
 - Matchlines
 - 100-year Floodplain Boundary
 - 500-year Floodplain Boundary
 - Floodway Boundary
 - Base Flood Elevation
 - Cross-Section (color varies by river reach)
- | Elevation Reference Mark Information | | |
|--------------------------------------|-----------|---------------|
| Name | Elevation | Description |
| BM16 | 184.96 | CP-WSDOT-2212 |

This map has been photogrammetrically compiled from 1"=750' scale, 152,852 mm C.F.L. aerial photos to meet National Standard for Spatial Data Accuracy (NSSDA) at a map scale of 1"=200' or 1:2400. Publication or use at any larger scale will void any implied or stipulated accuracy standards. This map has not been verified by field checks. Note: Field verification of map accuracy should occur prior to design level tasks that are dependent upon this map. Areas within dense vegetation are indicated by dashed contour lines, accuracy within these areas may vary in accordance with NSSDA standards.

Topography created by 3D West of Eugene, Oregon
 Topography based upon March 2004 Aerial Photographs (Bergman Photogrammetric Services), Ground and Bathymetric Surveys (Minister-Glasser Surveying), AGPS control (Orion GPS), and LIDAR data (Puget Sound LIDAR Consortium, King County Dept of Transportation, Snohomish County Dept. of Public Works).

Contour interval: 2 ft (contours generated from photogrammetry in King Co. and LIDAR and photogrammetry in Snohomish County)

Vertical Datum: NAVD 88, Horizontal Datum: HPGN (NAD 1983/1991)
 Coordinate System: State Plane Washington North - feet
 Datum Conversion Equation: NGVD29 = NAVD88 - 3.49'



Lower Snoqualmie & Skykomish Rivers Work Map

King & Snohomish Counties, Washington

northwest hydraulic consultants inc.
 16300 Christensen Road, Suite 350
 Seattle, WA 98188
 206-241-6000

Prepared for King County Department of Natural Resources and Parks, and Snohomish County Department of Public Works

Date: 1/24/2006

Plate 10 of 17