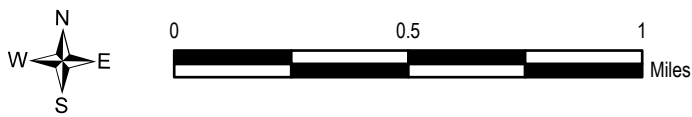
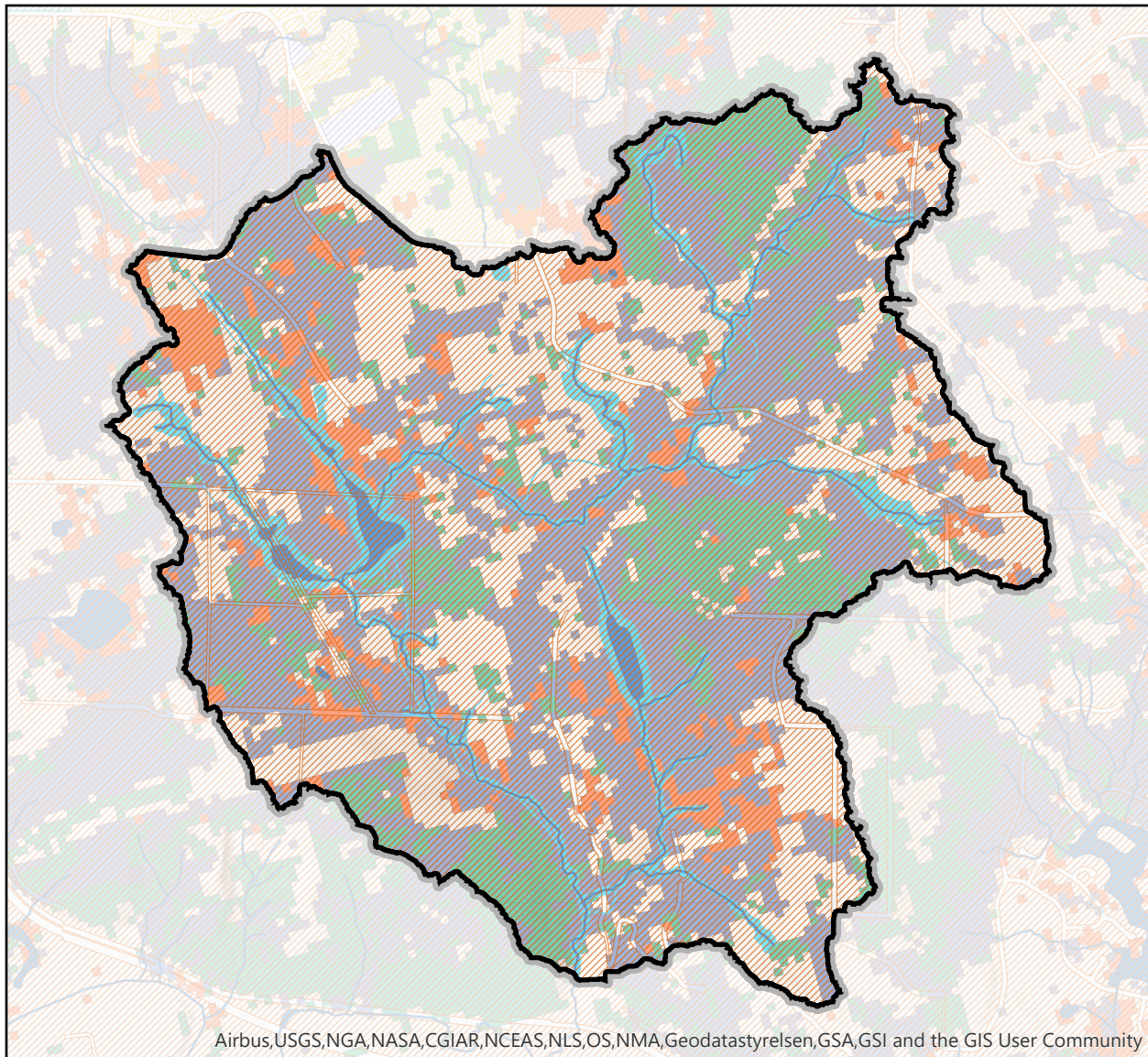


Zoning in forested areas: Weiss Creek



Study basins

Riparian buffers

NHD Waterbody

NHD Flowline

Simplified zoning

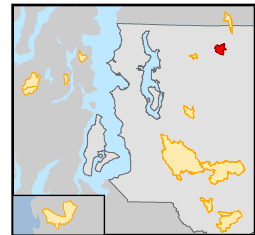
General Mixed Use;
General Commercial;
Office/Business Park
 Agricultural/Forested/
Rural Area; Park/Golf
Course/Trail/Open
Space

Aviation and
Transportation-
Related; Public Use/
Institutional
 Industrial/
Manufacturing/
Mineral Resource-
Related
 Sensitive/Critical Area

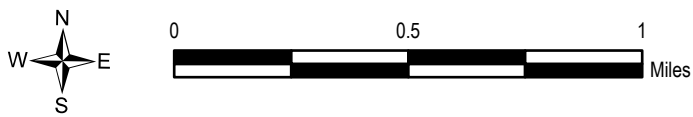
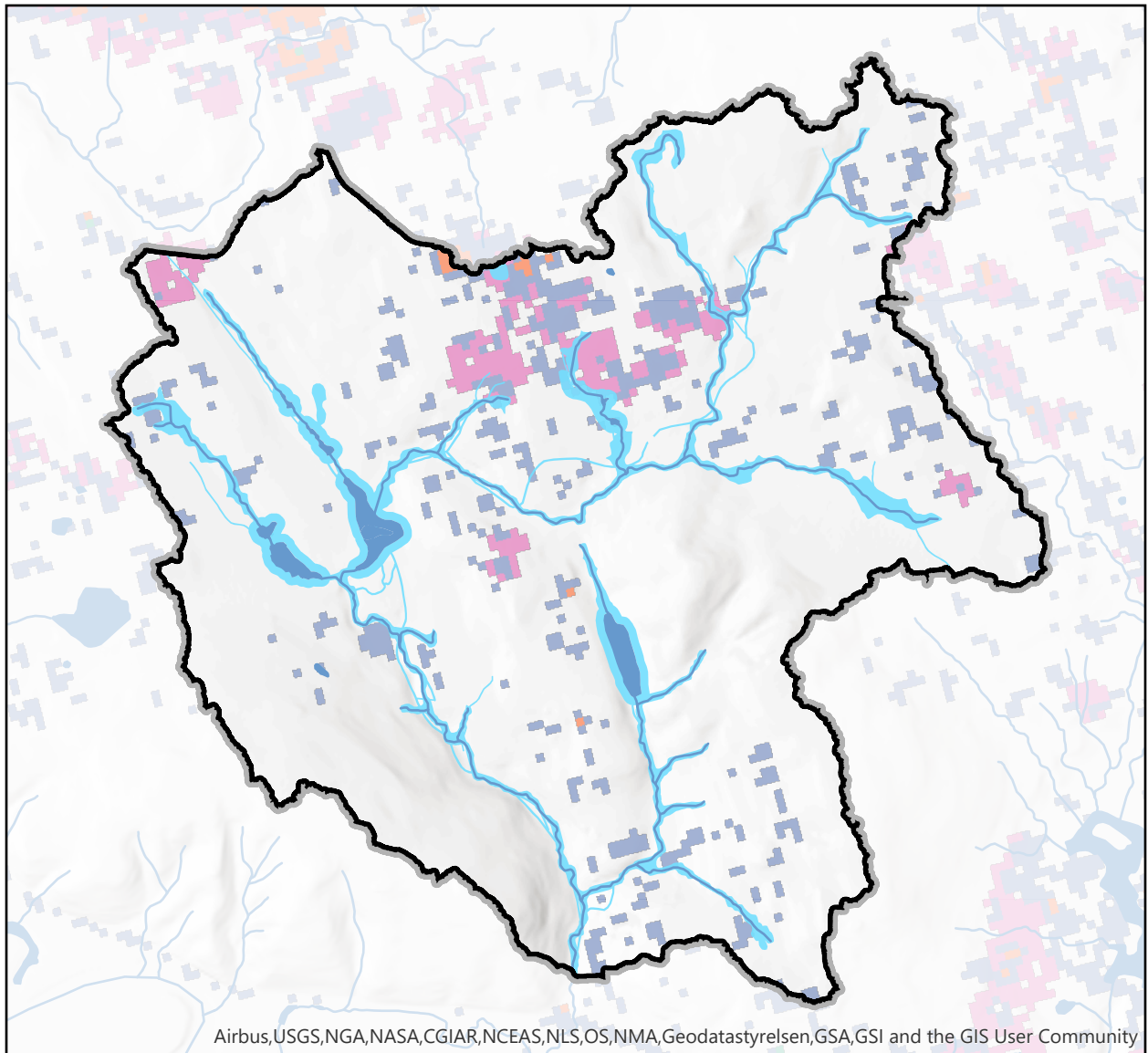
Single-Family
Residential; Multi-
Family Residential;
Mobile Home Park

CCAP 2016 land cover

Deciduous Forest
 Evergreen Forest
 Mixed Forest



Developed land: Basin Weiss Creek



Study basins

Riparian buffers

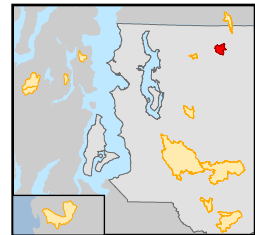
CCAP 2016 land cover

High Intensity Developed

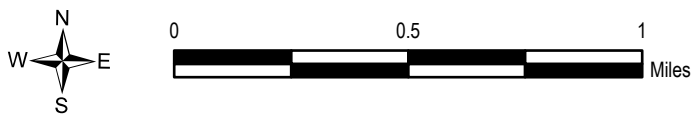
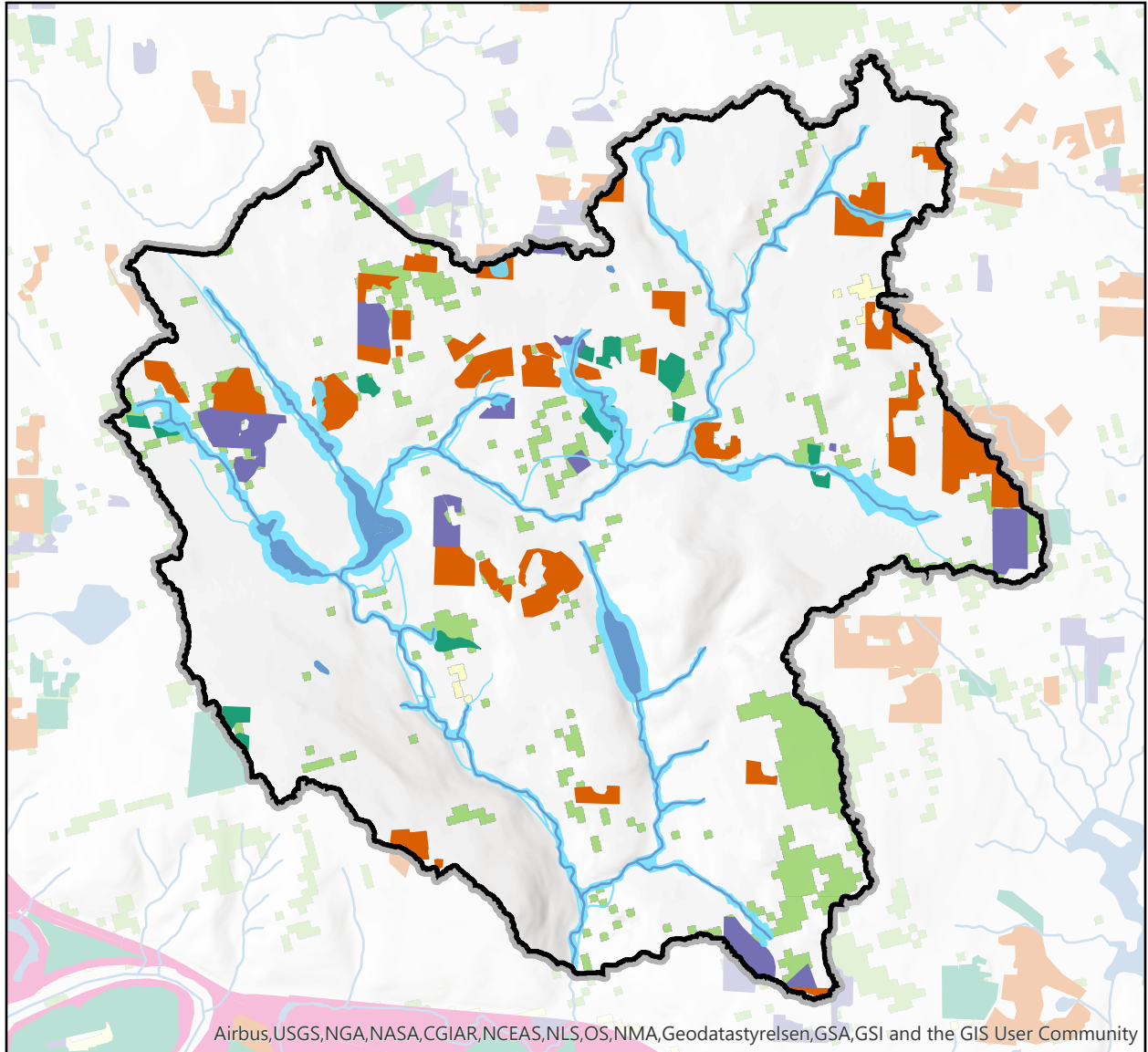
Medium Intensity Developed

Low Intensity Developed

Developed Open Space



Agricultural land: Weiss Creek



Study basins

Riparian buffers

Agricultural Land Use 2017

Farmed Food

Farmed Not Food

Unfarmed

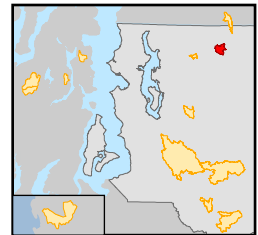
Unfarmable

CCAP 2016 land cover

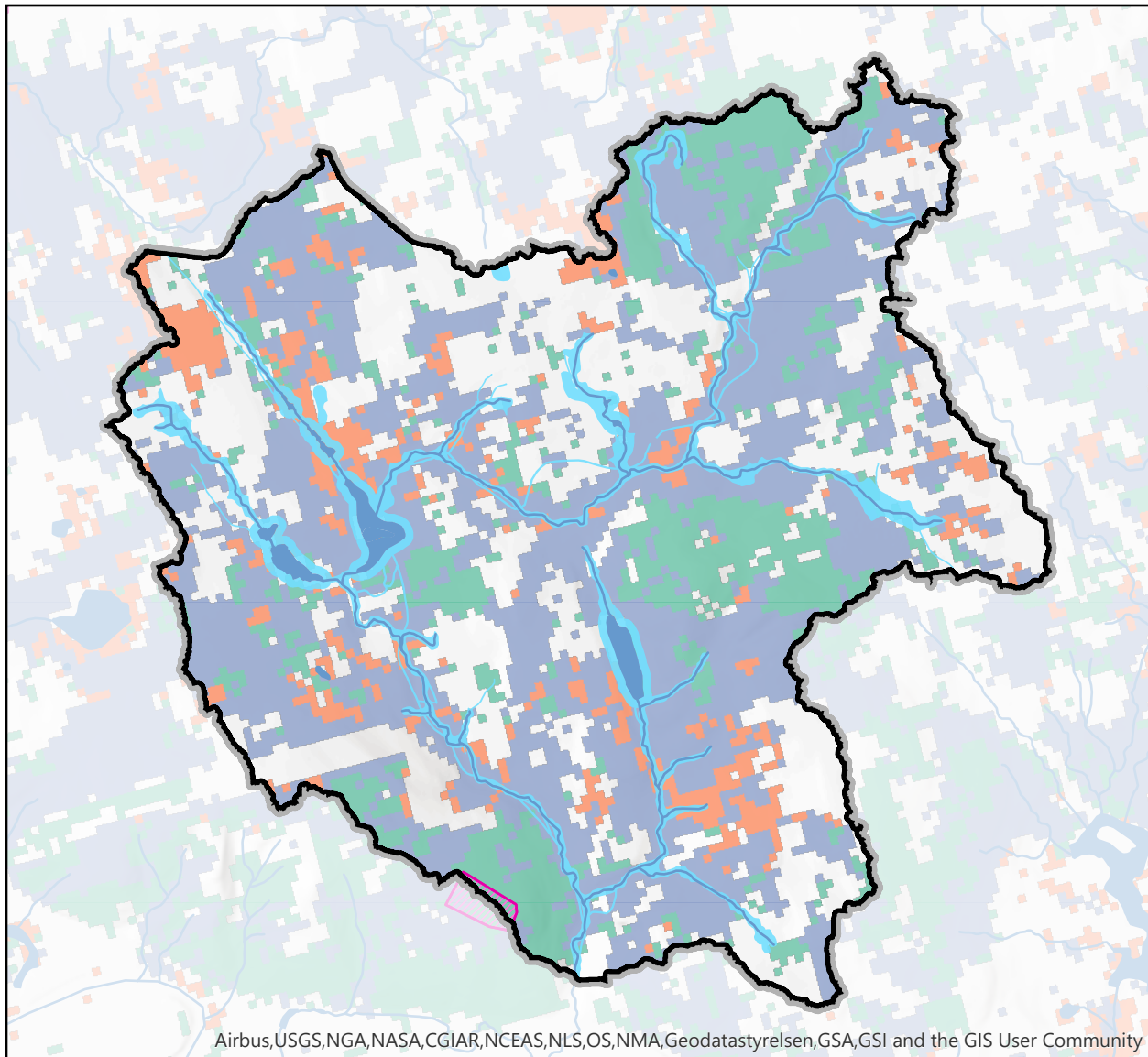
Cultivated

Pasture/Hay

Grassland



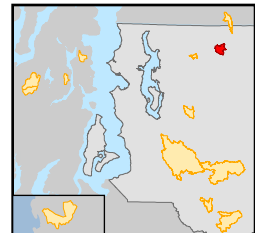
Forested land with timber harvest applications: Weiss Creek



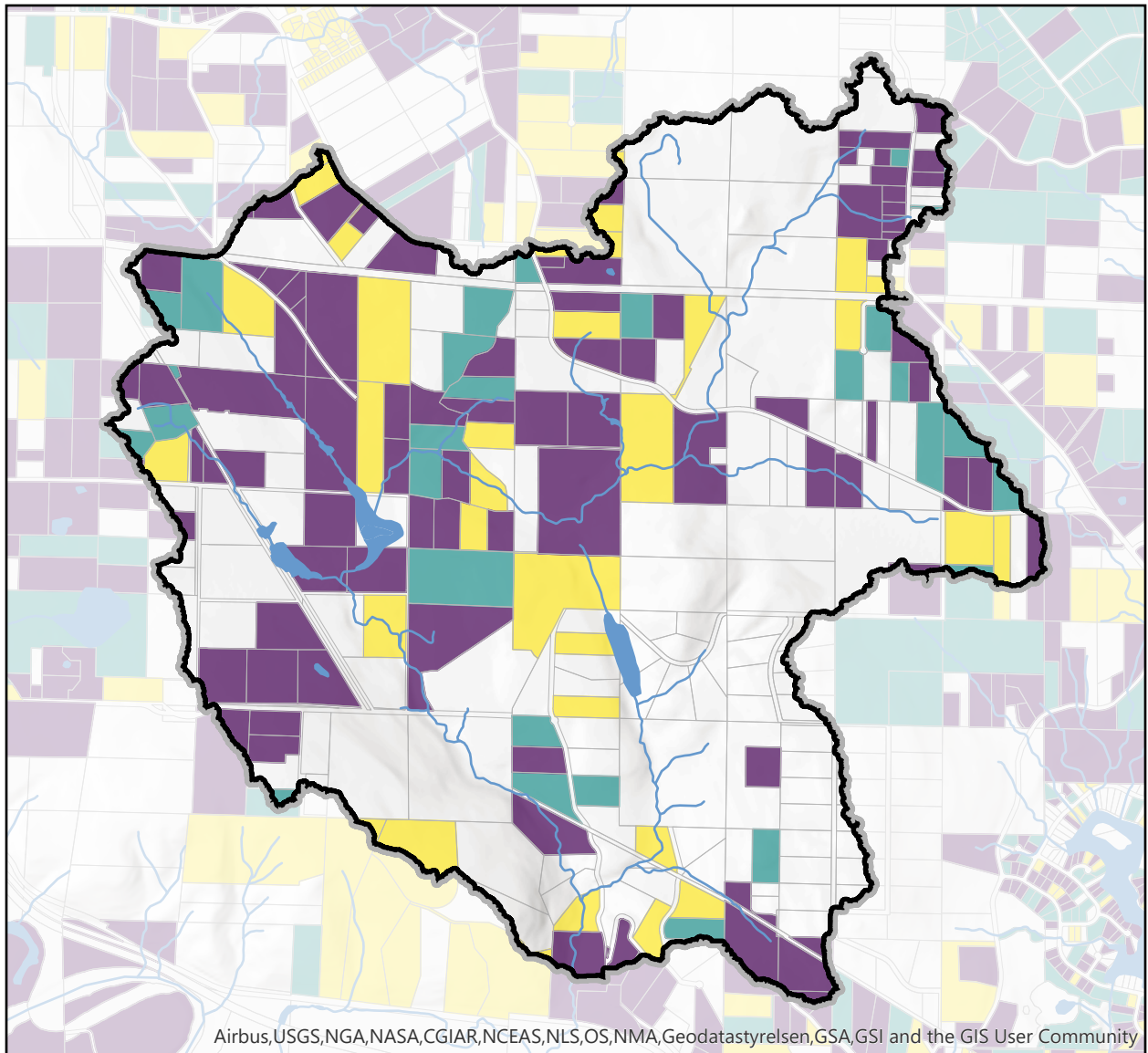
- Study basins
- Riparian buffers
- Timber harvest applications

CCAP 2016 land cover

- Deciduous Forest
- Evergreen Forest
- Mixed Forest



Parcel building age: Weiss Creek

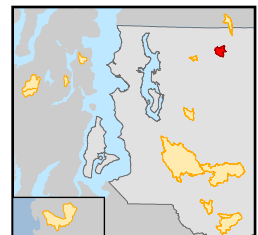


▣ Study basins

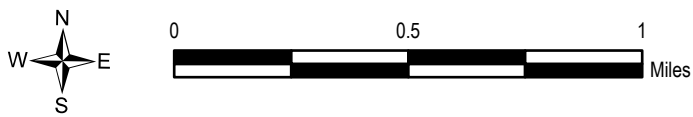
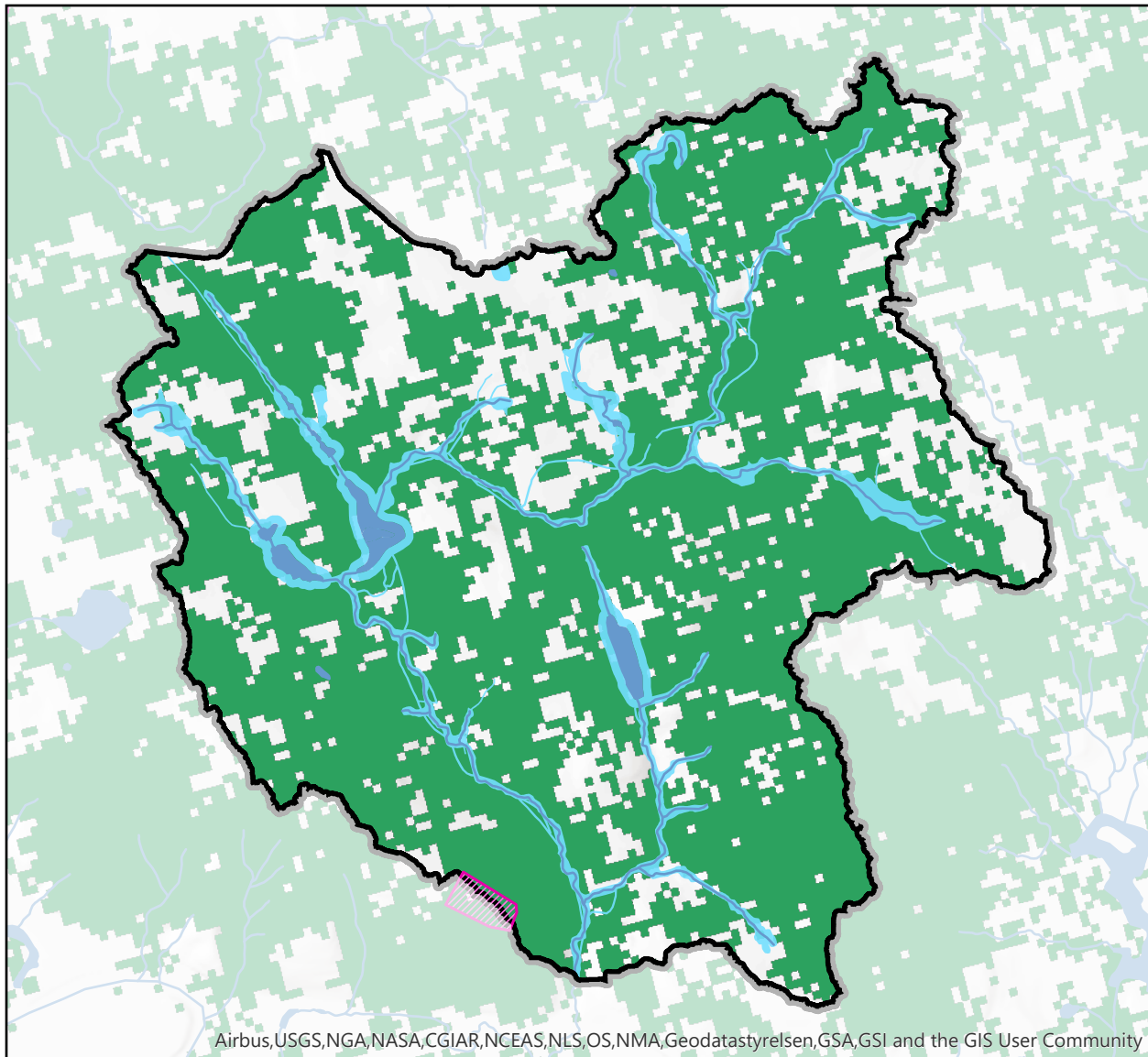
Parcels

Year built


- ≤1989
- 1990 – 1998
- 1999 – 2019



Canopy cover with harvest applications: Weiss Creek



 Timber harvest applications

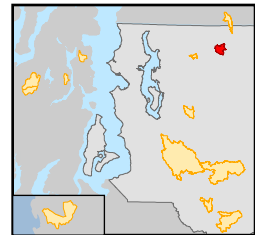
 Study basins

 Riparian buffers

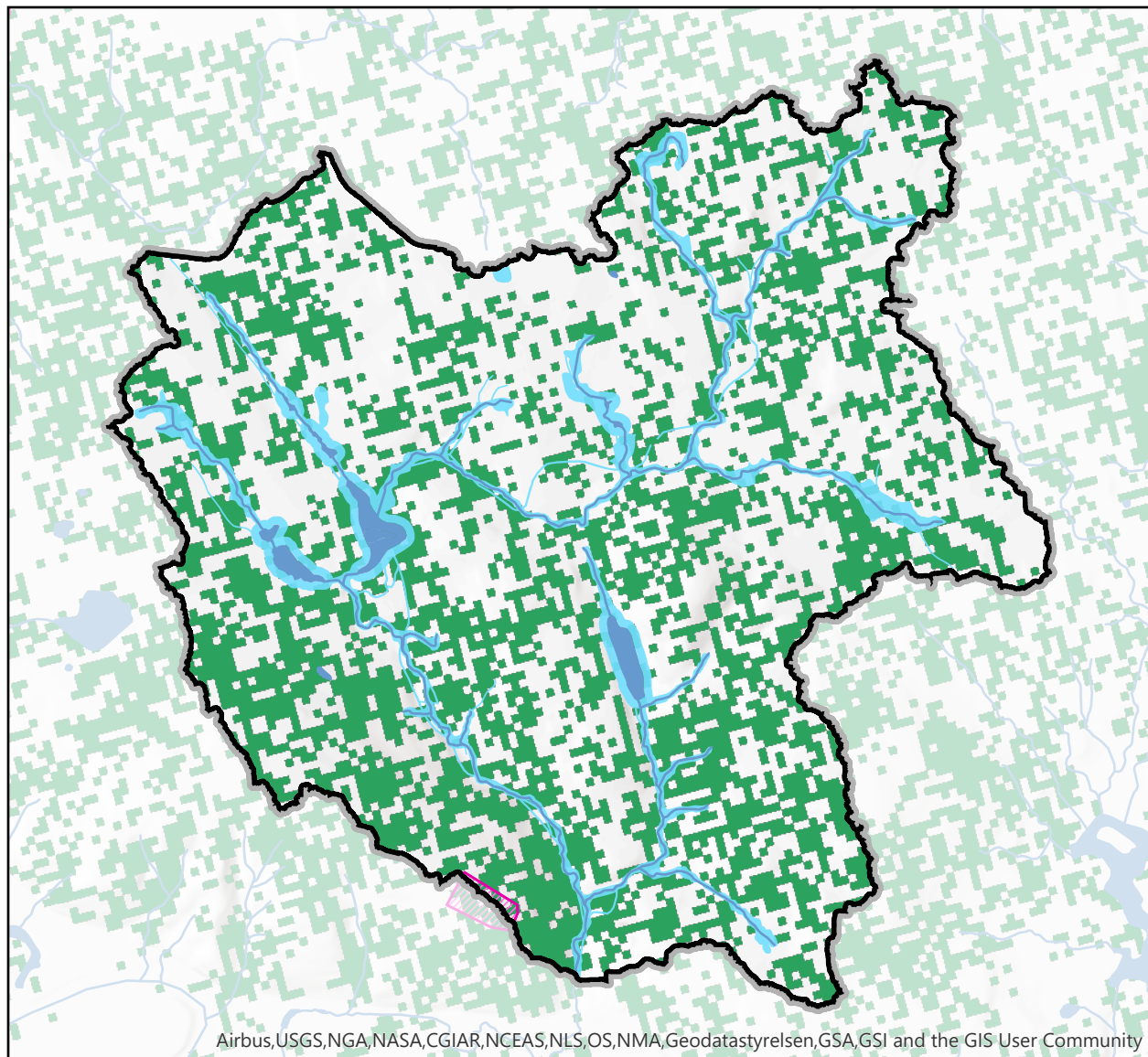
Canopy cover

 ≤ 53


 > 53



OGSI with harvest applications: Weiss Creek



 Timber harvest applications

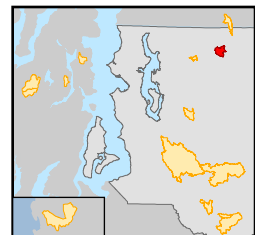
 Study basins

 Riparian buffers

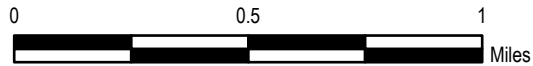
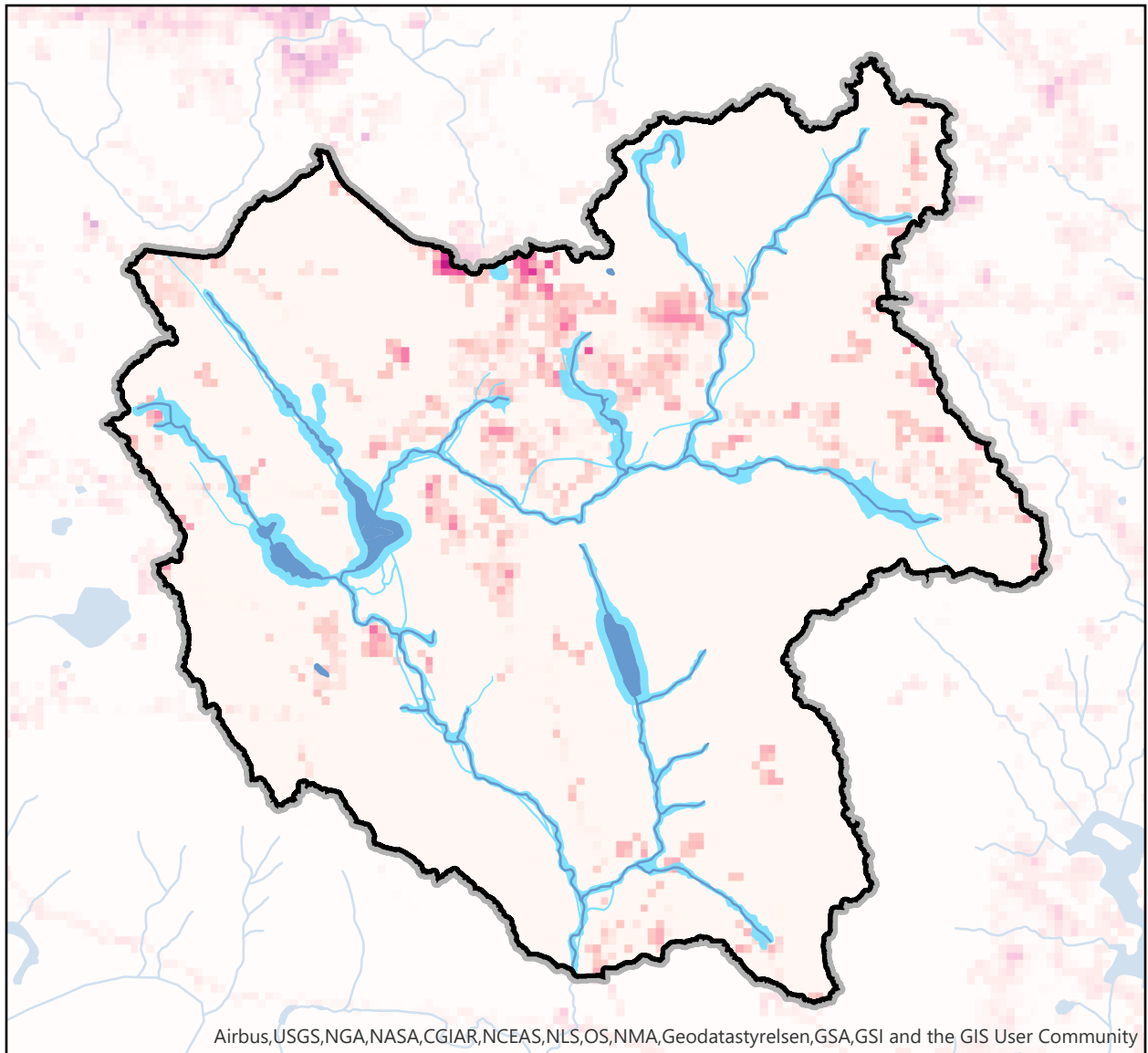
Old Growth Structure Index

 ≤ 18

 > 18



Percent imperviousness: Weiss Creek



■ Study basins

■ Riparian buffers

2016 National Land Cover Dataset

Percent Impervious

