

5.3.8 North Vashon Island

The North Vashon Island subarea contains five small drift cells wrapping around the northern tip of the island and continuing south down the western island shore (see Map 2). Much of its shoreline perimeter is configured with houses at the base of bluffs with armoring in front, and houses atop the bluff as well. Typically, there is some vegetation below the blufftop houses and above the houses at the base of bluffs, but in general, the subarea is nearly entirely armored with houses and bulkheads along the north face of the island extending south to the Vashon Ferry Terminal. Also, there is a long row of effective residential groins along the northern stretch of shore from Fern Cove to Point Vashon.

Despite its armored state, the subarea also exhibits an unusually wide riparian corridor compared to other parts of the project area. This is a unique attribute of this area, and it is desirable to preserve this corridor to maintain the integrity of the canopy and the source for LWD to the shore.

This subarea contains the second largest watershed on the islands, Shinglemill Creek. WDFW has documented that the creek supports anadromous salmonids (WDFW 2002). The creek's outlet is unarmored and there is a large marsh adjacent to the creek. South of the creek, much of the shoreline is armored but there is much mature riparian vegetation. Several other smaller tributaries occur in this subarea. The subarea also contains several points and shoreline protrusions, some with large marshes and low energy refuge areas, as is the case with Peter Point.

5.3.8.1 Habitat Needs and Goals

Because of its proximity to Shinglemill Creek and other salmon streams, the North Vashon Island subarea is important for its low energy and shaded habitats. Maintaining these habitats for feeding and migrating juveniles is a key need in this area, especially near the creek mouths and points with marsh vegetation. Also, given the residential buildout of the shoreline and the number of bulkheads here, the value of protecting and increasing the amount of unarmored habitat is significant.

5.3.8.2 *Priority Recommendations*

Habitat recommendations in this subarea include the following (Map 14):

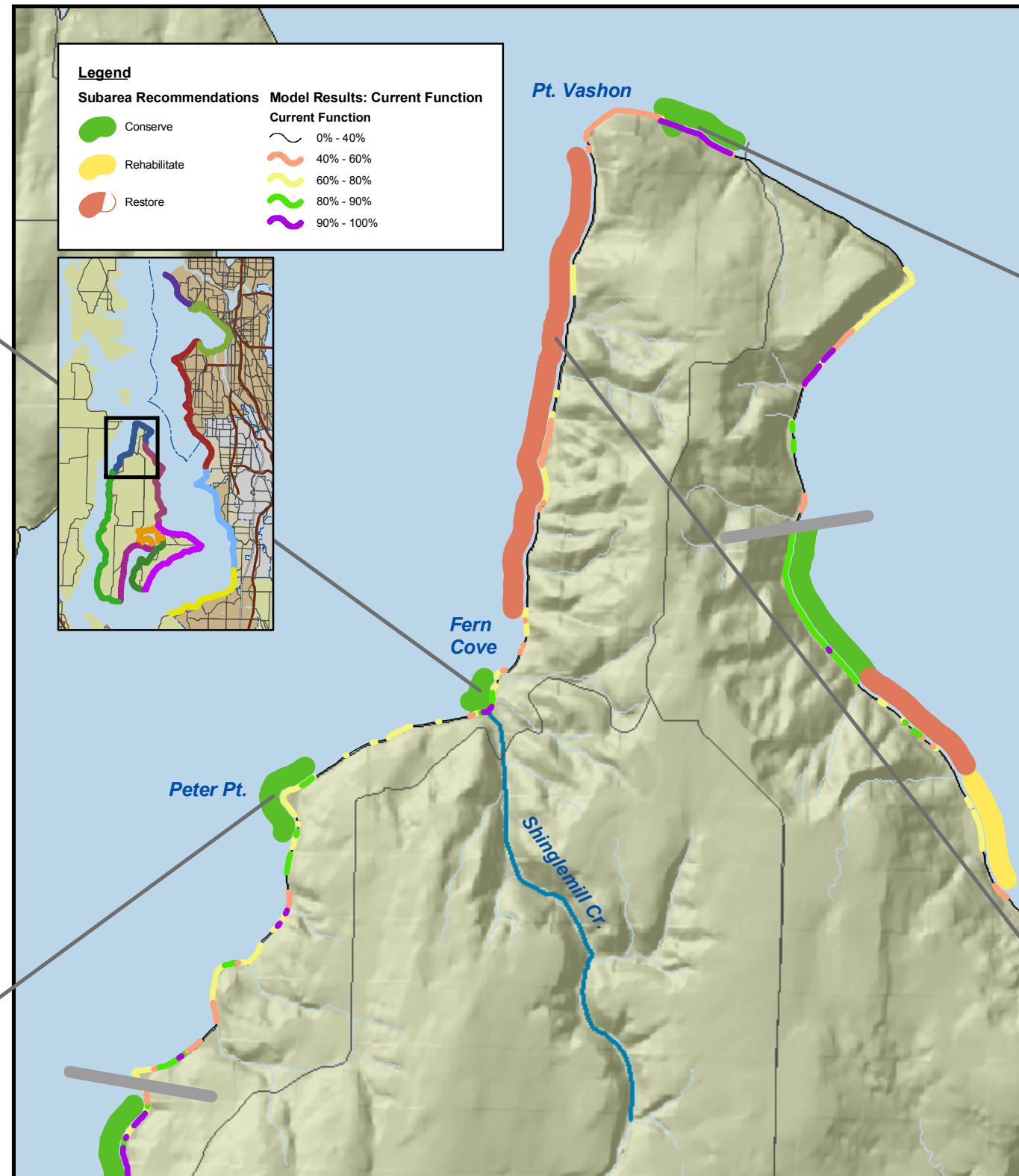
- *Conserve* shoreline west of the Vashon Ferry Terminal that is not armored and that lacks residences.
- *Conserve* Shinglemill Creek's unarmored mouth and extensive riparian vegetation.
- *Conserve* Peter Point and the other points and protrusions along the shore that provide protection from high energy current conditions from the north and south of the subarea.
- *Conserve* the wide corridor of riparian vegetation present along the subarea's shoreline, particularly in areas with LWD present where it can be a source.
- *Restore* northward longshore sediment transport and maintain sediment supply to Point Vashon by removing residential groins between Fern Cove and Point Vashon.



Conserve stream mouths and low-energy habitats
Conserve Shingle Mill Creek's unarmored mouth as well as other small creek mouths in the subarea. Conserve wide corridors of marine vegetation where existing.

North Vashon Island

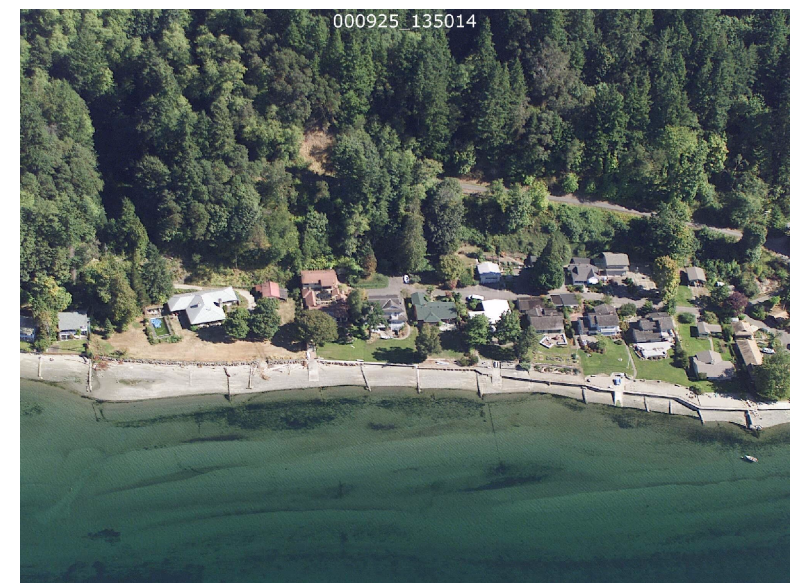
This subarea includes Shinglemill Creek, one of the largest salmon-producing tributaries on the islands. This subarea includes several points and coves that provide low energy and shaded habitats. Maintaining creek mouths and points with marsh vegetation is crucial here, as well as protecting and increasing the amount of unarmored habitat.



Conserve unarmored shorelines and riparian zones
Protect the shoreline west of the Vashon Ferry terminal that lacks residences in an area which is heavily modified.



Conserve points and other low energy areas
Conserve Peter Point and the points and coves (e.g. Fern Cove) along the shore which provide protection from high energy current conditions from the north and south of the subarea.



Restore northward longshore sediment transport
Restore and maintain sediment supply to Point Vashon by removing residential groins between Fern Cove and Point Vashon.

J:\Jobs\030239-04-Seattle-WRIA9_Nearshore\Report Figures\PointVashon.mxd JWS 04/12/2006 2:34 PM