

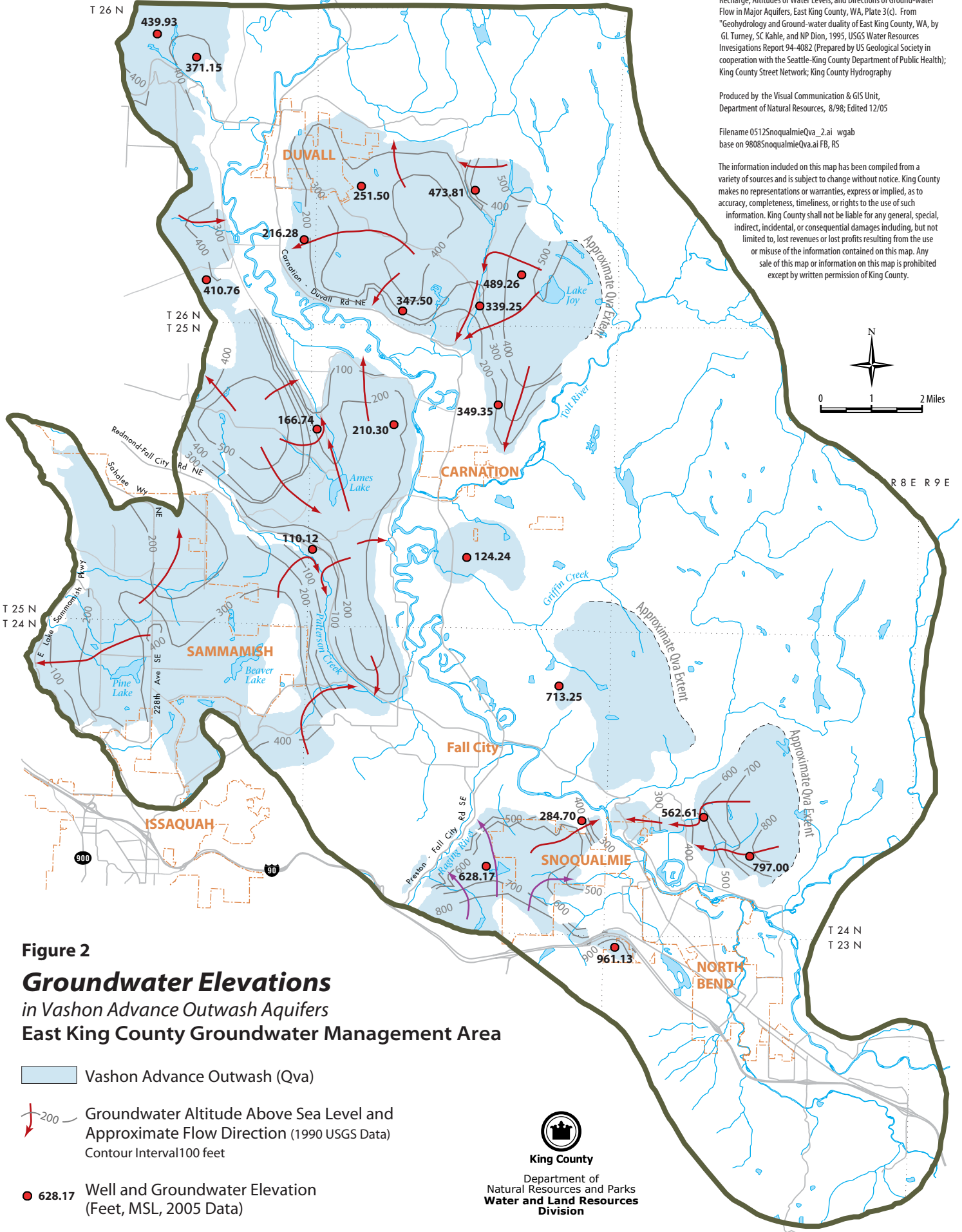
T 27 N  
T 26 N  
R 6 E R 7 E  
R 7 E R 8 E

Sources:  
"Maps Showing the Quantity and Areal Distribution of Recharge, Altitudes of Water Levels, and Directions of Ground-water Flow in Major Aquifers, East King County, WA, Plate 3(c). From "Geohydrology and Ground-water quality of East King County, WA, by GL Turney, SC Kahle, and NP Dion, 1995, USGS Water Resources Investigations Report 94-4082 (Prepared by US Geological Society in cooperation with the Seattle-King County Department of Public Health); King County Street Network; King County Hydrography

Produced by the Visual Communication & GIS Unit,  
Department of Natural Resources, 8/98; Edited 12/05

Filename 0512SnoqualmieQva\_2.ai wgab  
base on 9808SnoqualmieQva.ai FB, RS

The information included on this map has been compiled from a variety of sources and is subject to change without notice. King County makes no representations or warranties, express or implied, as to accuracy, completeness, timeliness, or rights to the use of such information. King County shall not be liable for any general, special, indirect, incidental, or consequential damages including, but not limited to, lost revenues or lost profits resulting from the use or misuse of the information contained on this map. Any sale of this map or information on this map is prohibited except by written permission of King County.



**Figure 2**  
**Groundwater Elevations**  
in Vashon Advance Outwash Aquifers  
East King County Groundwater Management Area

- Vashon Advance Outwash (Qva)
- Groundwater Altitude Above Sea Level and Approximate Flow Direction (1990 USGS Data) Contour Interval 100 feet
- Well and Groundwater Elevation (Feet, MSL, 2005 Data)

