

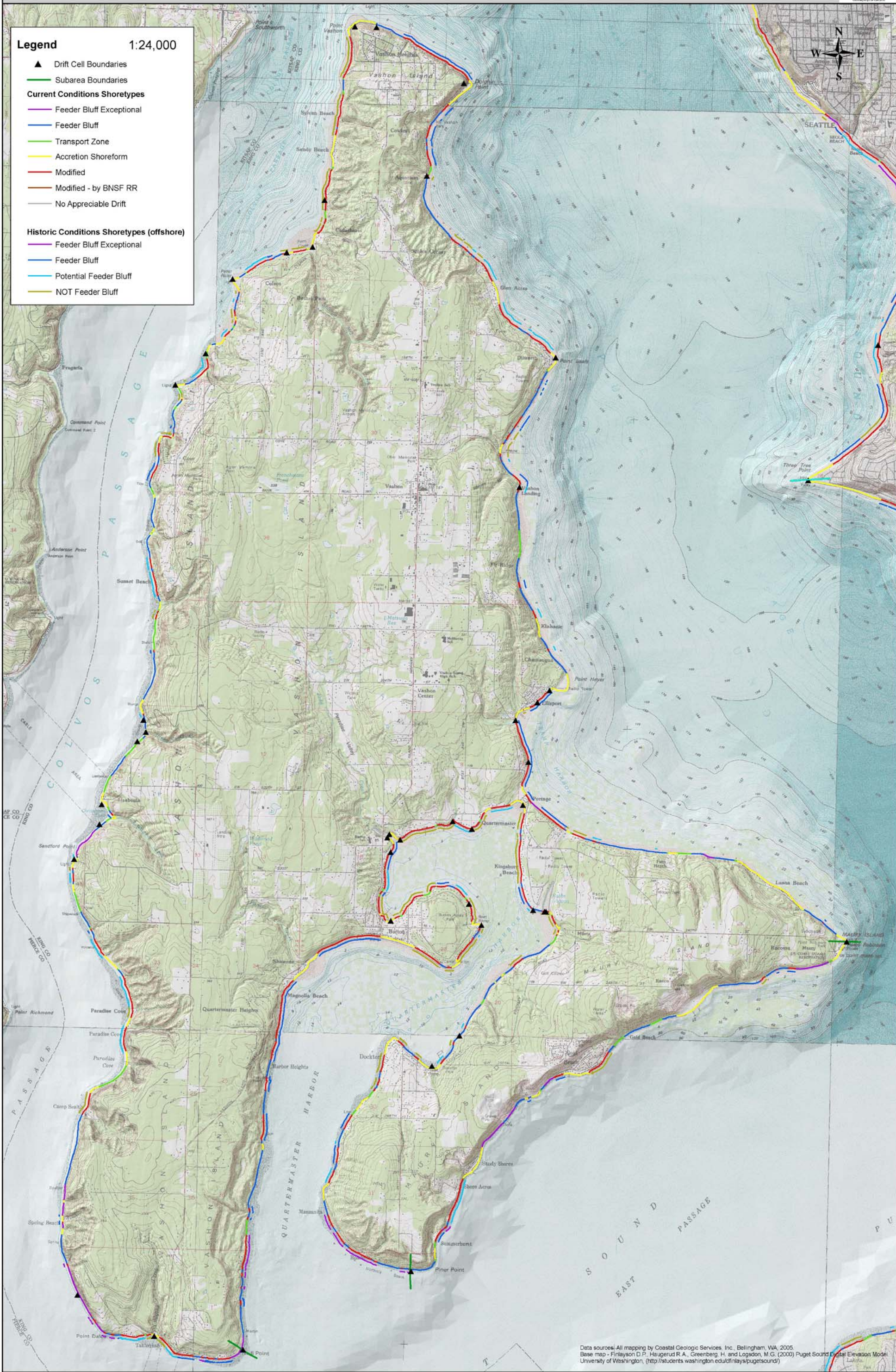
Map 7. Vashon and Maury Islands - Current and Historic (buffered offshore) sediment sources
Inventory and Assessment of Current and Historic Beach Feeding Sources/ Erosion and Accretion Areas for WRIAs 8 and 9, Central Puget Sound, WA



Legend 1:24,000

- ▲ Drift Cell Boundaries
- Subarea Boundaries
- Current Conditions Shoretypes**
- Feeder Bluff Exceptional
- Feeder Bluff
- Transport Zone
- Accretion Shoreform
- Modified
- Modified - by BNSF RR
- No Appreciable Drift

- Historic Conditions Shoretypes (offshore)**
- Feeder Bluff Exceptional
- Feeder Bluff
- Potential Feeder Bluff
- NOT Feeder Bluff



Data sources: All mapping by Coastal Geologic Services, Inc., Bellingham, WA, 2005.
Base map - Finlayson D.P., Hagerud R.A., Greenberg, H. and Logsdon, M.G. (2000) Puget Sound Digital Elevation Model
University of Washington, (<http://students.washington.edu/finlayson/pugetsound/>)

Map 8. Landslides mapped in WRIA 8 & 9 (CGS field mapping, fall 2004)

Inventory and Assessment of Current and Historic Beach Feeding Sources/ Erosion and Accretion Areas for WRIAs 8 and 9, Central Puget Sound, WA

Legend

1:200,000

•

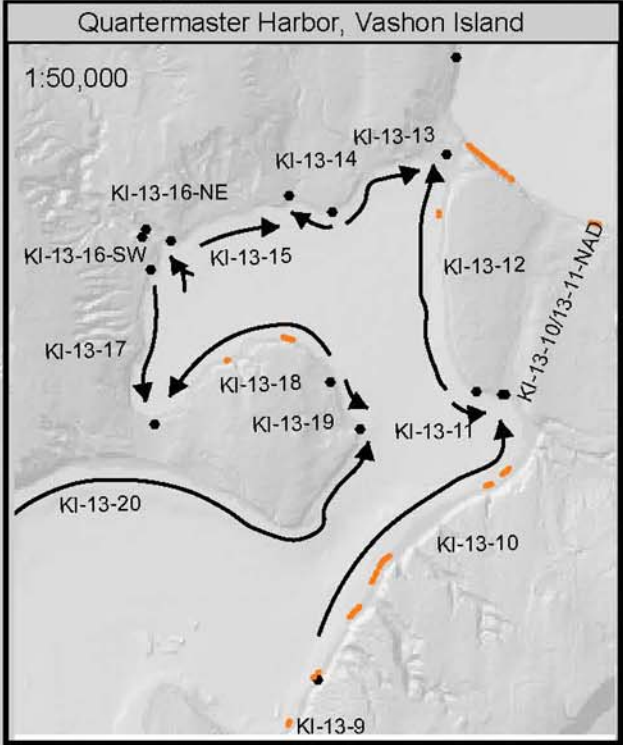
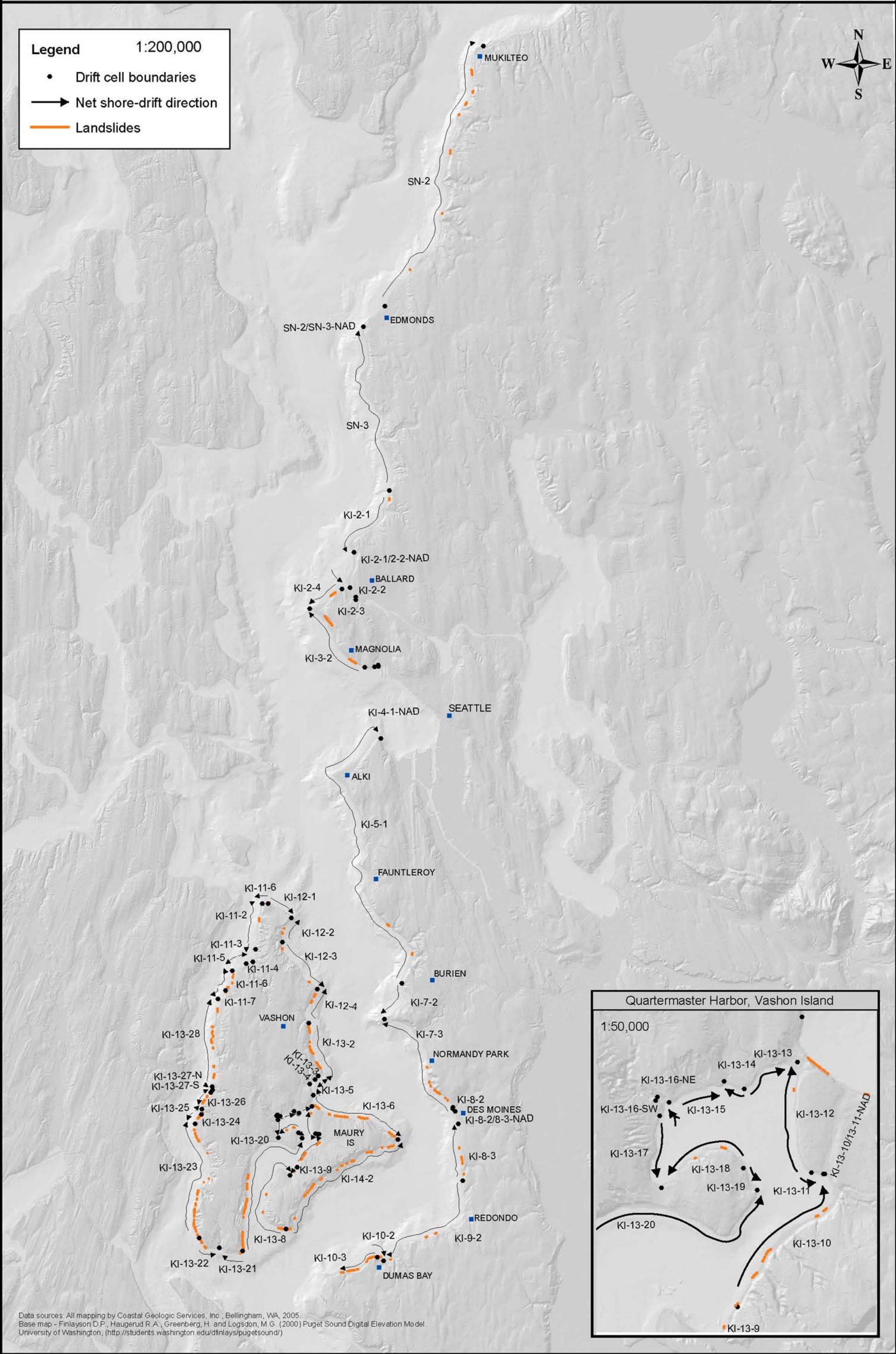
Drift cell boundaries

→

Net shore-drift direction

—


Landslides



Data sources: All mapping by Coastal Geologic Services, Inc., Bellingham, WA, 2005.
Base map - Finlayson D.P., Haugerud R.A., Greenberg, H. and Logsdon, M.G. (2000) Puget Sound Digital Elevation Model.
University of Washington, (<http://students.washington.edu/dfinlays/pugetsound/>)

Map 9. Toe erosion mapped in WRIA 8 & 9 (CGS field mapping, fall 2004)

Inventory and Assessment of Current and Historic Beach Feeding Sources/ Erosion and Accretion Areas for WRIAs 8 and 9, Central Puget Sound, WA

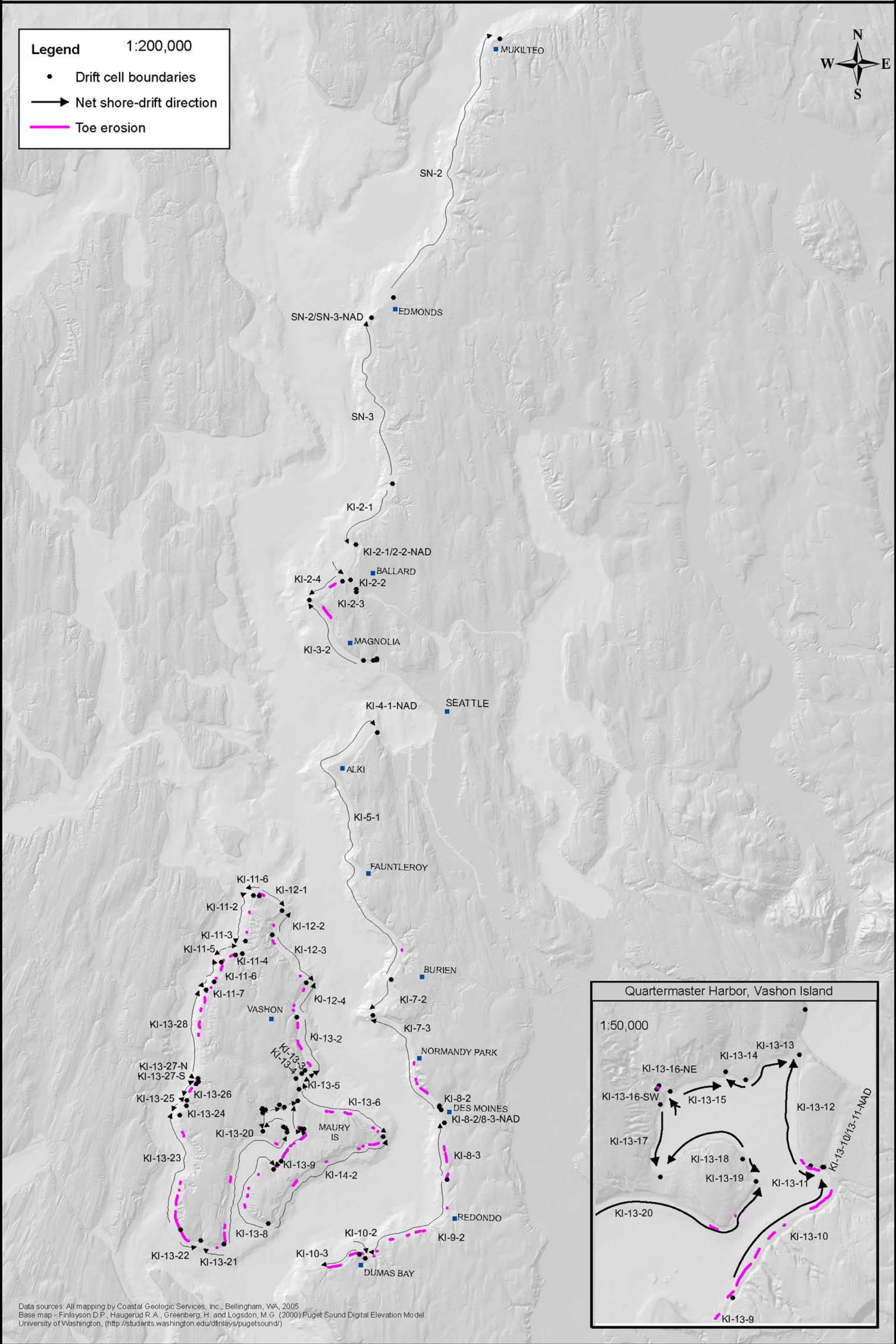


701 Wilson Ave, Bellingham, WA, 98225
(P) 360-847-1845, (F) 360-671-6654
www.coastalgeo.com

Legend

1:200,000

- Drift cell boundaries
- Net shore-drift direction
- Toe erosion



Data sources: All mapping by Coastal Geologic Services, Inc., Bellingham, WA, 2005.
Base map - Finlayson D.P., Haugerud R.A., Greenberg, H. and Logsdon, M.G. (2000) Puget Sound Digital Elevation Model.
University of Washington, (<http://students.washington.edu/dfinlays/pugetsound/>)

Map 10. Northern Railroad Subarea - Current and Historic (buffered offshore) Accretion shoreforms
Inventory and Assessment of Current and Historic Beach Feeding Sources/ Erosion and Accretion Areas for WRIs 8 and 9, Central Puget Sound, WA



Legend
1:24,000

▲ Drift Cell Boundaries

— Subarea Boundaries

Current Conditions Shoretypes

— Feeder Bluff Exceptional

— Feeder Bluff

— Transport Zone

— Accretion Shoreform

— Modified

— Modified - by BNSF RR

— No Appreciable Drift

Historic Accretion Shoreform Types (offshore)

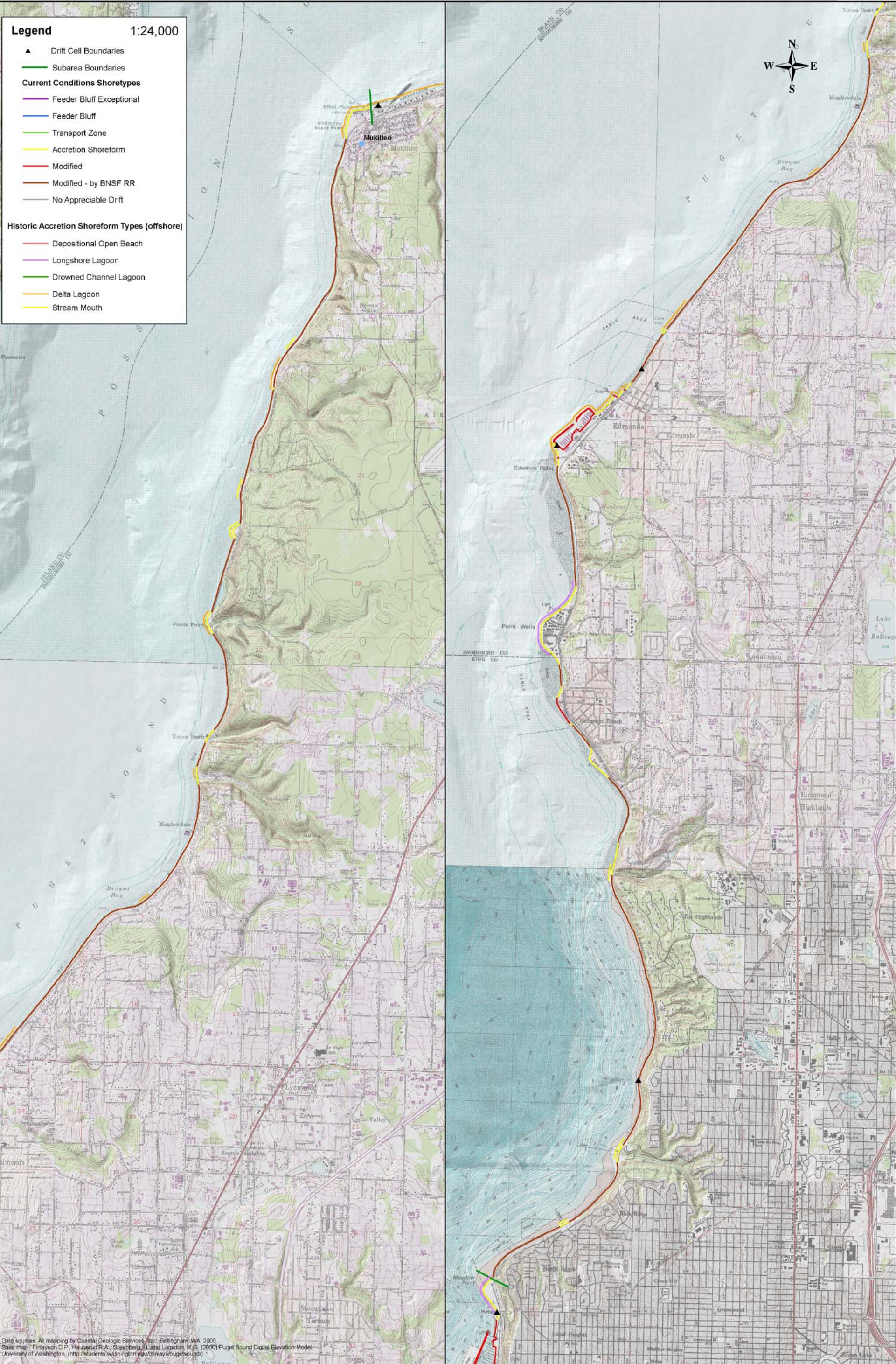
— Depositional Open Beach

— Longshore Lagoon

— Drowned Channel Lagoon

— Delta Lagoon

— Stream Mouth



Data sources: All mapping by Coastal Geologic Services, Inc., Bellingham, WA, 2005.
Base map: Finklason D.P., Hagerud R.A., Greenberg, L.L. and Logsdon, M.G. (2000) Puget Sound Digital Elevation Model.
University of Washington. (<http://students.washington.edu/finklason/pugetsound/>)

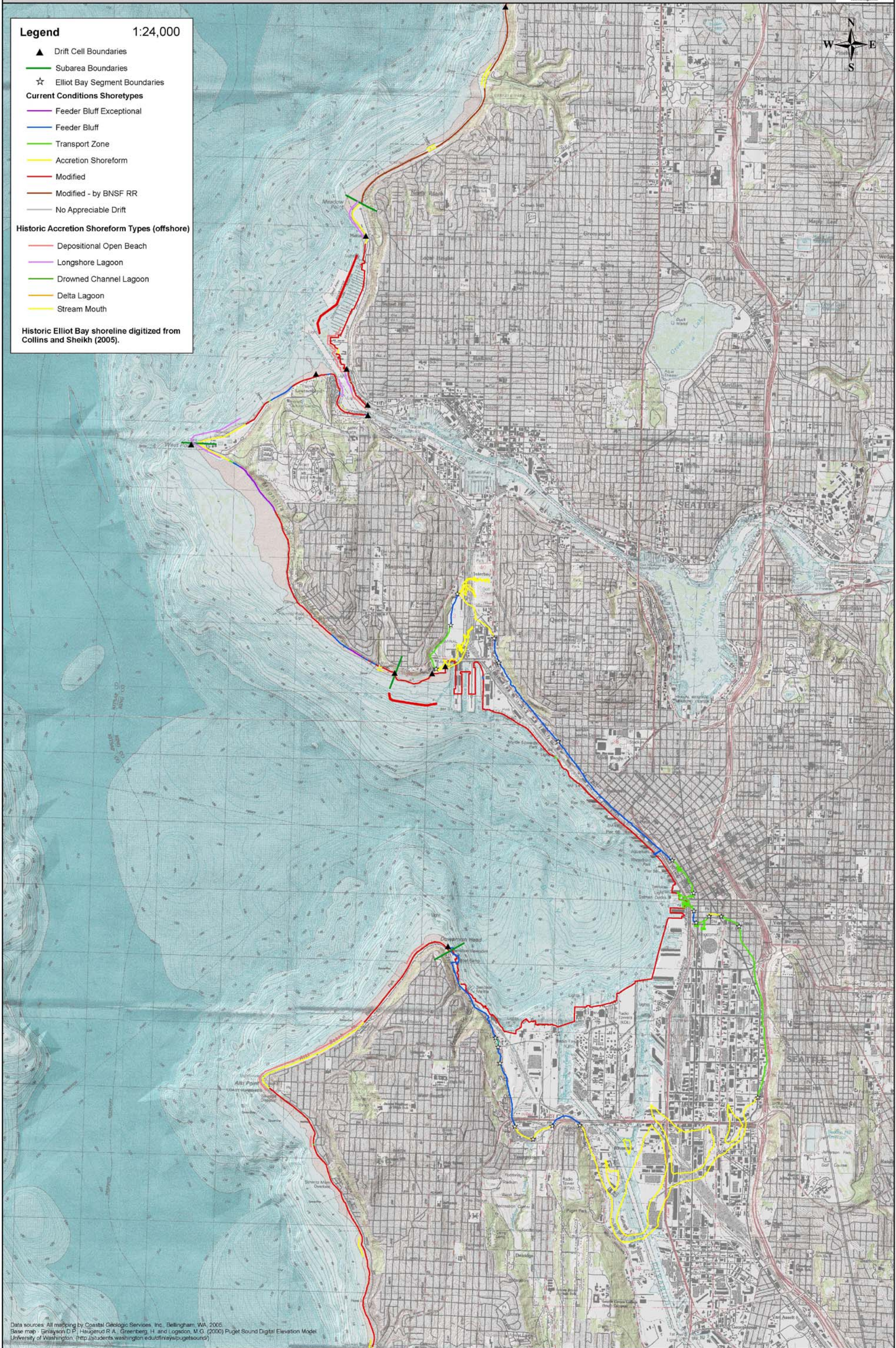
Map 11. Salmon Bay to Elliot Bay - Current and Historic (buffered offshore) Accretion shoreforms

Inventory and Assessment of Current and Historic Beach Feeding Sources/ Erosion and Accretion Areas for WRIAs 8 and 9, Central Puget Sound, WA



- Legend** 1:24,000
- ▲ Drift Cell Boundaries
 - Subarea Boundaries
 - ☆ Elliot Bay Segment Boundaries
 - Current Conditions Shoretypes**
 - Feeder Bluff Exceptional
 - Feeder Bluff
 - Transport Zone
 - Accretion Shoreform
 - Modified
 - Modified - by BNSF RR
 - No Appreciable Drift
 - Historic Accretion Shoreform Types (offshore)**
 - Depositional Open Beach
 - Longshore Lagoon
 - Drowned Channel Lagoon
 - Delta Lagoon
 - Stream Mouth

Historic Elliot Bay shoreline digitized from Collins and Sheikh (2005).



Map 12. Seattle to Three Tree Point - Current and Historic (buffered offshore) Accretion shoreforms
Inventory and Assessment of Current and Historic Beach Feeding Sources/ Erosion and Accretion Areas for WRIAs 8 and 9, Central Puget Sound, WA



Legend1:24,000

▲

Drift Cell Boundaries

—

Subarea Boundaries

☆

Elliot Bay Segment Boundaries

Current Conditions Shoretypes

—

Feeder Bluff Exceptional

—

Feeder Bluff

—

Transport Zone

—

Accretion Shoreform

—

Modified

—

Modified - by BNSF RR

—

No Appreciable Drift

Historic Accretion Shoreform Types (offshore)

—

Depositional Open Beach

—

Longshore Lagoon

—

Drowned Channel Lagoon

—

Delta Lagoon

—

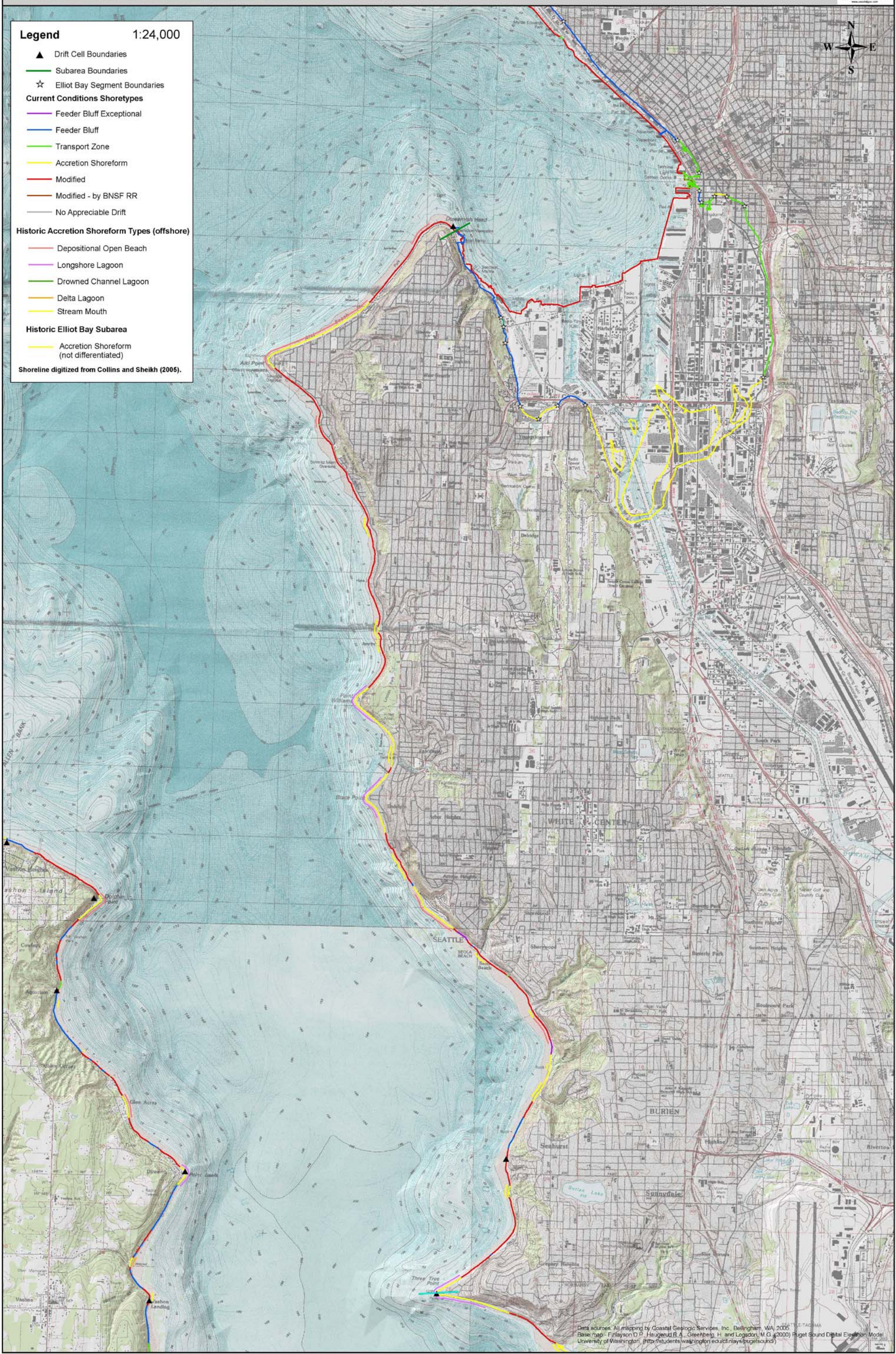
Stream Mouth

Historic Elliot Bay Subarea

—

Accretion Shoreform (not differentiated)

Shoreline digitized from Collins and Sheikh (2005).



Data sources: All mapping by Coastal Geologic Services, Inc., Bellingham, WA, 2005.
Base map - Finlayson D.P., Haugerud R.A., Greenberg, H. and Logsdon, M.G. (2000) Puget Sound Digital Elevation Model
University of Washington, (<http://students.washington.edu/cfinlayson/pugetsound/>)