

**GREEN-DUWAMISH WATERSHED
WATER TEMPERATURE REPORT**

Figure 8

Newaukum Creek Basin:
Temperature Data with Average
Number of Days and Degrees above
1997 Temperature Criterion of 18°C

**Number of Seasons
Averaged**

- None
- ✱ 1
- ✱ 2
- ✱ 3

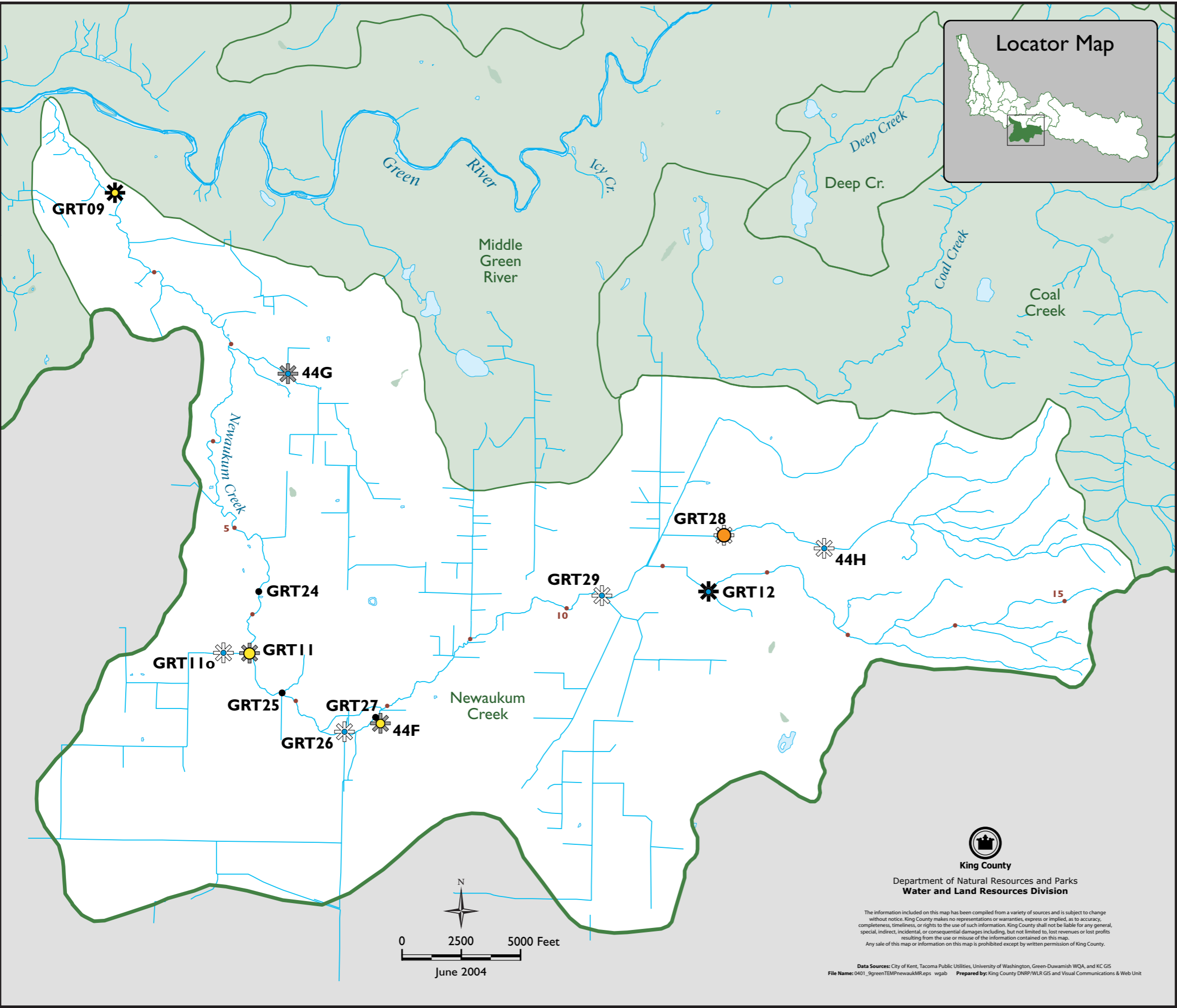
**Average Number of Days
over Criteria per Season**

- No exceedences
- 1-10
- 10-25
- 25-50
- >50

**Average Number of Degrees
over Criteria per Season**

- No exceedences
- 0-1
- 1-3
- 3-5
- >5

- Basin Boundary
- Watershed Boundary
- 25 • River Mile
- River
- Lake
- Wetland



**GREEN-DUWAMISH WATERSHED
WATER TEMPERATURE REPORT**

Figure 9

Newaukum Creek Basin:
Temperature Data with Average
Number of Days and Degrees above
2003 Migration and Rearing
Criterion of 17.5° C

**Number of Seasons
Averaged**

- None
- ✱ 1
- ✱ 2
- ✱ 3

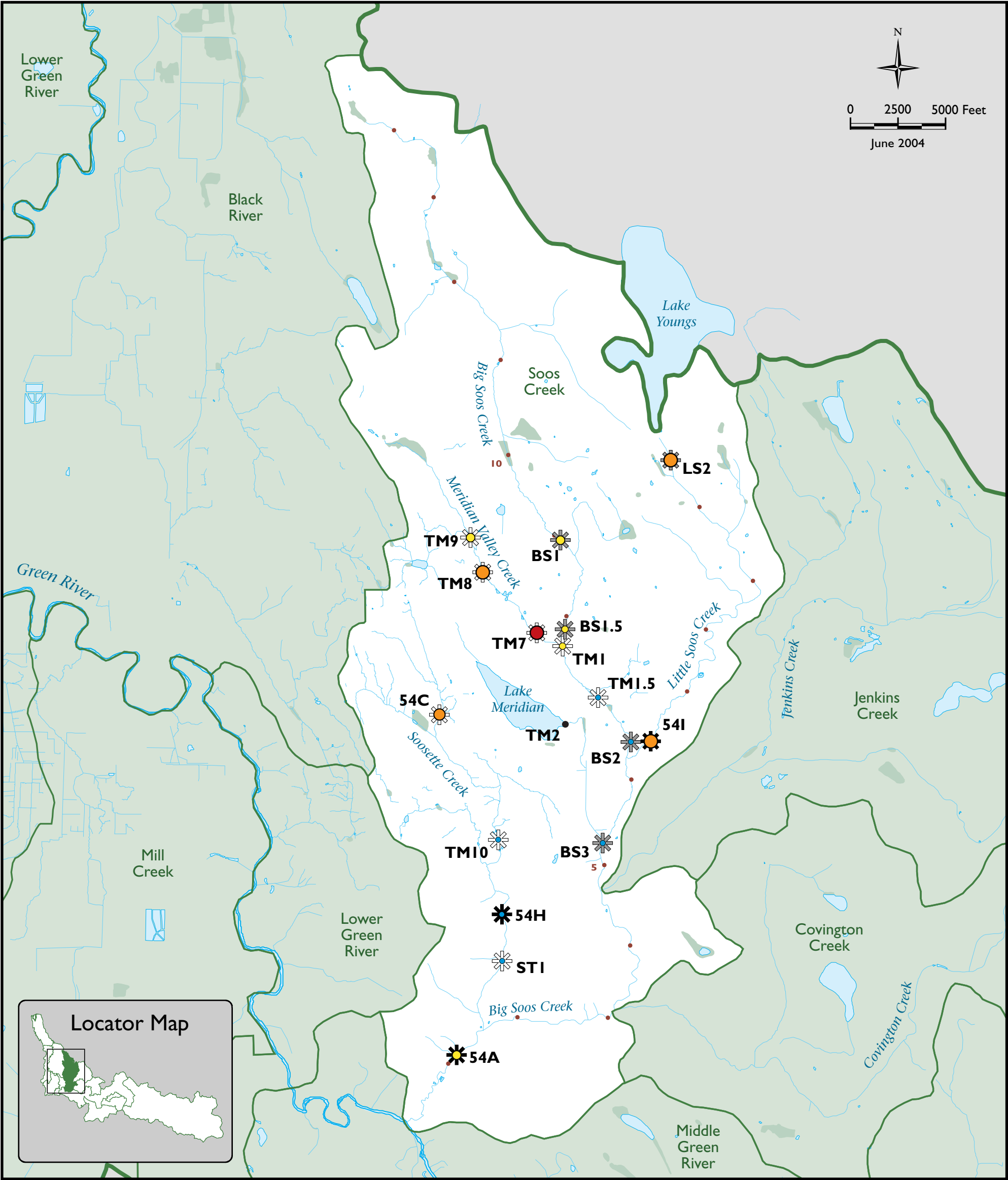
**Average Number of Days
over Criteria per Season**

- No exceedences
- 1-10
- 10-25
- 25-50
- >50

**Average Number of Degrees
over Criteria per Season**

- No exceedences
- 0-1
- 1-3
- 3-5
- >5

- Basin Boundary
- Watershed Boundary
- 25• River Mile
- River
- Lake
- Wetland



GREEN-DUWAMISH WATERSHED WATER TEMPERATURE REPORT

Figure 10
Soos Creek Basin: Temperature Data with Average Number of Days and Degrees above 1997 Temperature Criterion of 18° C



King County

Department of Natural Resources and Parks
Water and Land Resources Division

The information included on this map has been compiled from a variety of sources and is subject to change without notice. King County makes no representations or warranties, express or implied, as to accuracy, completeness, timeliness, or rights to the use of such information. King County shall not be liable for any general, special, indirect, incidental, or consequential damages including, but not limited to, lost revenues or lost profits resulting from the use or misuse of the information contained on this map. Any sale of this map or information on this map is prohibited except by written permission of King County.

Data Sources: City of Kent, Tacoma Public Utilities, University of Washington, Green-Duwamish WQA, and KC GIS
File Name: 0401_10greenTEMPsoos97.eps wgalb Prepared by: King County DNRP/WLR GIS and Visual Communications & Web Unit

Number of Seasons Averaged

- None
- ✱ 1
- ✱ 2
- ✱ 3

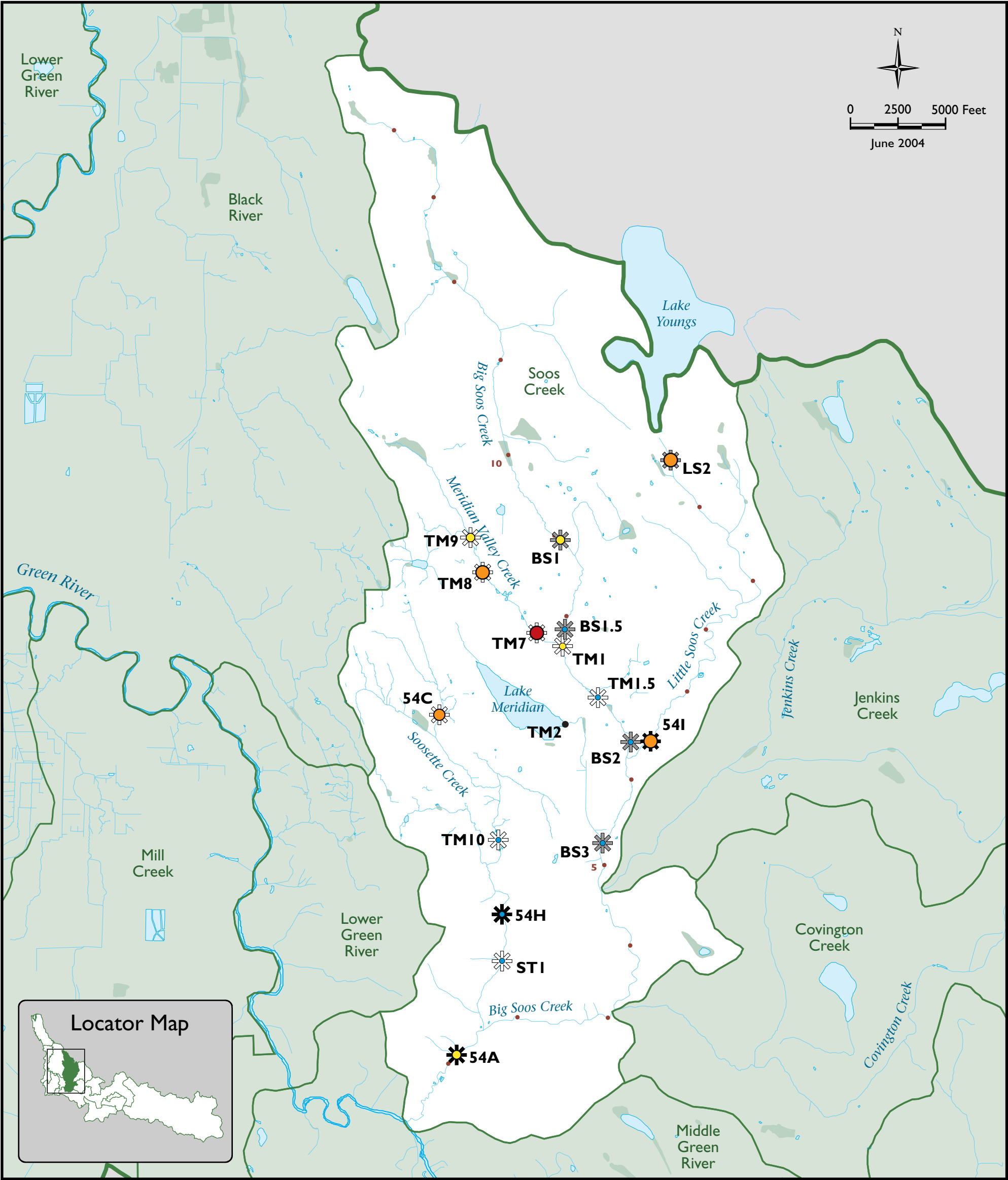
Average Number of Days over Criteria per Season

- No exceedences
- 1-10
- 10-25
- 25-50
- >50

Average Number of Degrees over Criteria per Season

- No exceedences
- 0-1
- 1-3
- 3-5
- >5

- Basin Boundary
- Watershed Boundary
- 25 • River Mile
- River
- Lake
- Wetland



GREEN-DUWAMISH WATERSHED WATER TEMPERATURE REPORT

Figure 11

Soos Creek Basin: Temperature Data with Average Number of Days and Degrees above 2003 Migration and Rearing Criterion of 17.5° C



King County

Department of Natural Resources and Parks
Water and Land Resources Division

The information included on this map has been compiled from a variety of sources and is subject to change without notice. King County makes no representations or warranties, express or implied, as to accuracy, completeness, timeliness, or rights to the use of such information. King County shall not be liable for any general, special, indirect, incidental, or consequential damages including, but not limited to, lost revenues or lost profits resulting from the use or misuse of the information contained on this map. Any sale of this map or information on this map is prohibited except by written permission of King County.

Data Sources: City of Kent, Tacoma Public Utilities, University of Washington, Green-Duwamish WQA, and KC GIS
File Name: 0401_11greenTEMPsoosMRReps_wgab Prepared by: King County DNRP/WLR GIS and Visual Communications & Web Unit

Number of Seasons Averaged

- None
- ✱ 1
- ✱ 2
- ✱ 3

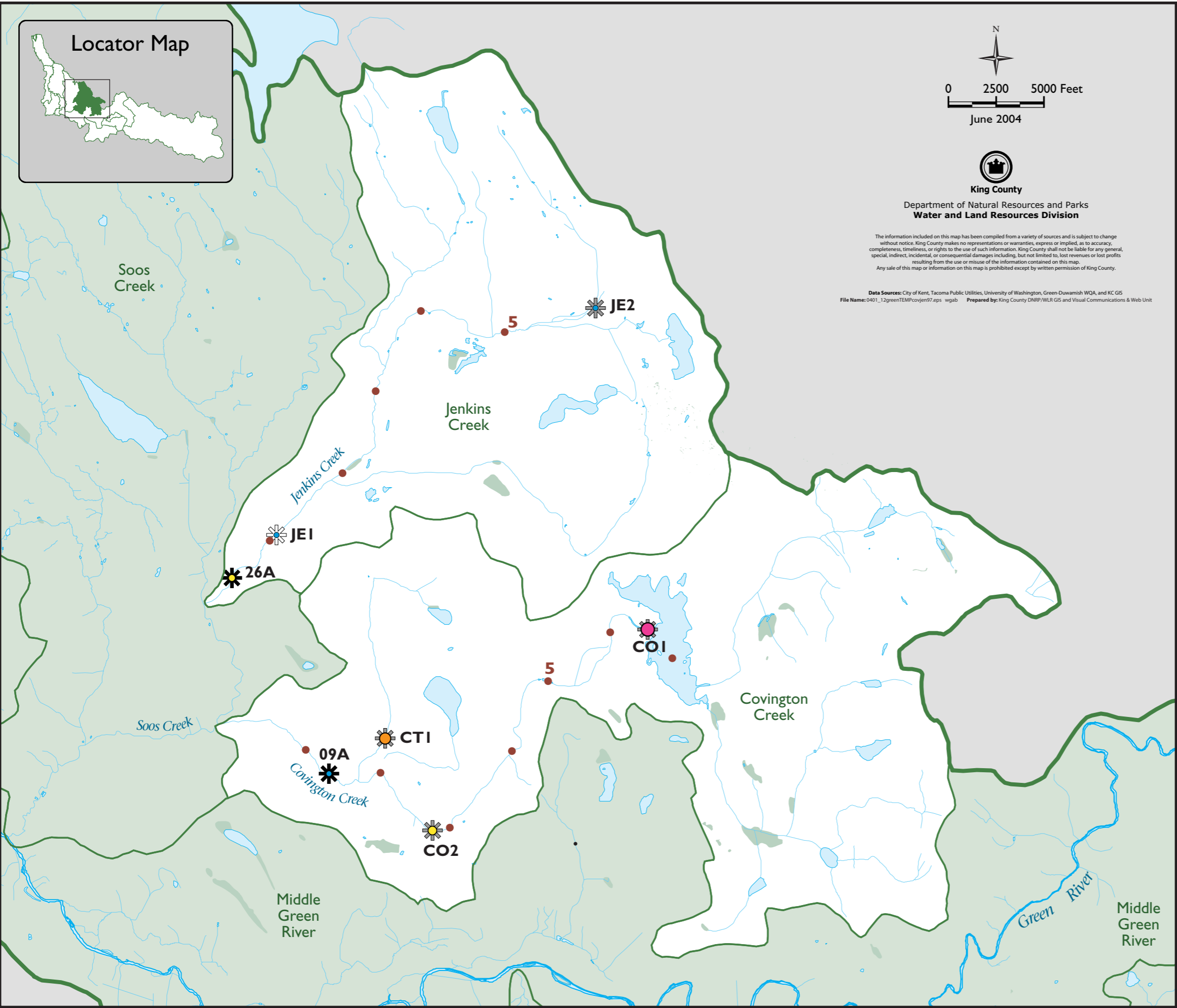
Average Number of Days over Criteria per Season

- No exceedences
- 1-10
- 10-25
- 25-50
- >50

Average Number of Degrees over Criteria per Season

- No exceedences
- 0-1
- 1-3
- 3-5
- >5

- Basin Boundary
- Watershed Boundary
- 25 River Mile
- River
- Lake
- Wetland



**GREEN-DUWAMISH WATERSHED
WATER TEMPERATURE REPORT**

Figure 12

Covington and Jenkins Creek Basins:
Temperature Data with Average
Number of Days and Degrees above
1997 Temperature Criterion of 18° C

**Number of Seasons
Averaged**

- None
- ✱ 1
- ✱ 2
- ✱ 3

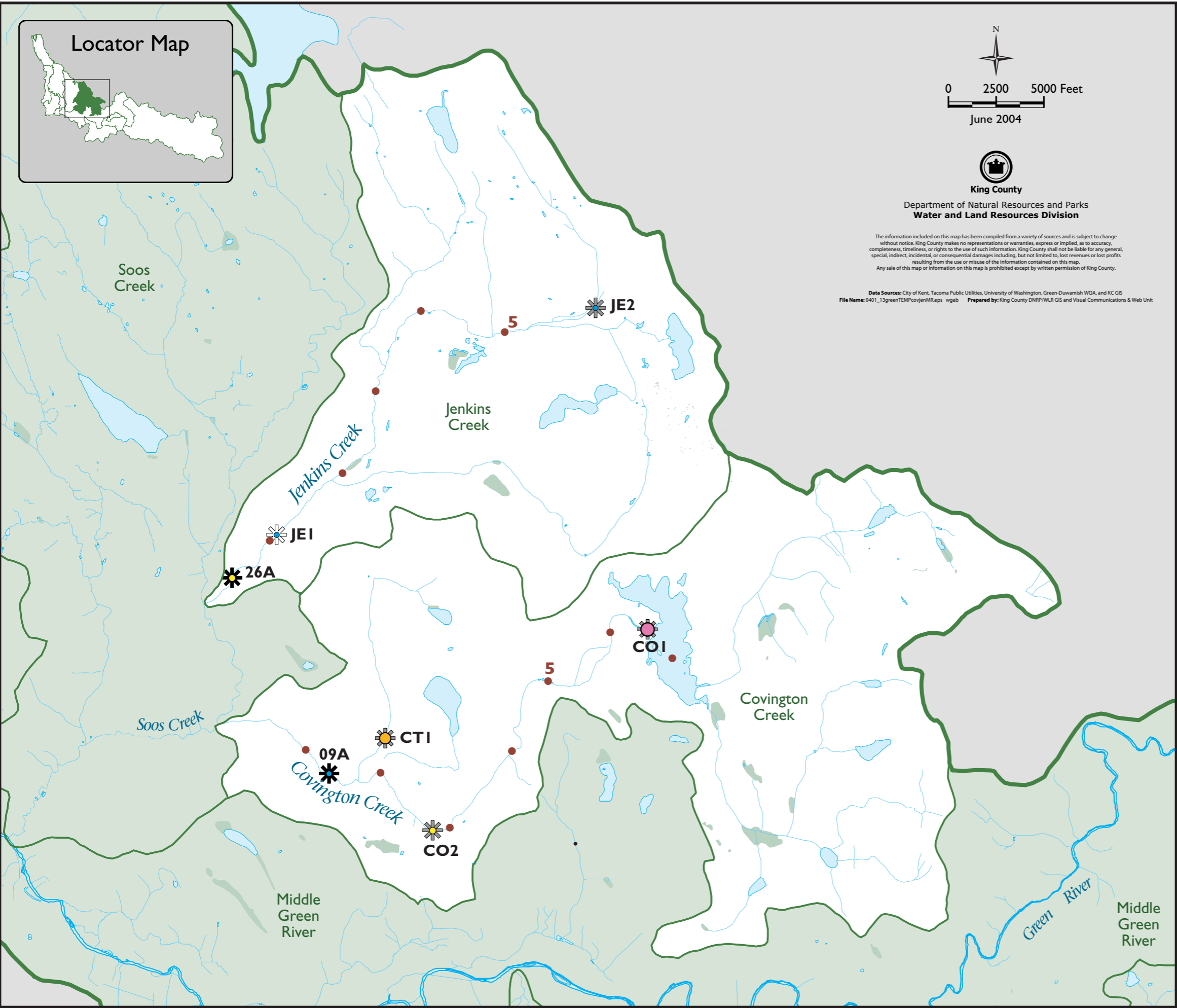
**Average Number of Days
over Criteria per Season**

- No exceedences
- 1-10
- 10-25
- 25-50
- >50

**Average Number of Degrees
over Criteria per Season**

- No exceedences
- 0-1
- 1-3
- 3-5
- >5

- Basin Boundary
- Watershed Boundary
- 25 • River Mile
- River
- Lake
- Wetland



**GREEN-DUWAMISH WATERSHED
WATER TEMPERATURE REPORT**

Figure 13

Covington and Jenkins Creek Basins:
Temperature Data with Average
Number of Days and Degrees above
2003 Migration and
Rearing Criterion of 17.5° C

**Number of Seasons
Averaged**

- None
- ✱ 1
- ✱✱ 2
- ✱✱✱ 3

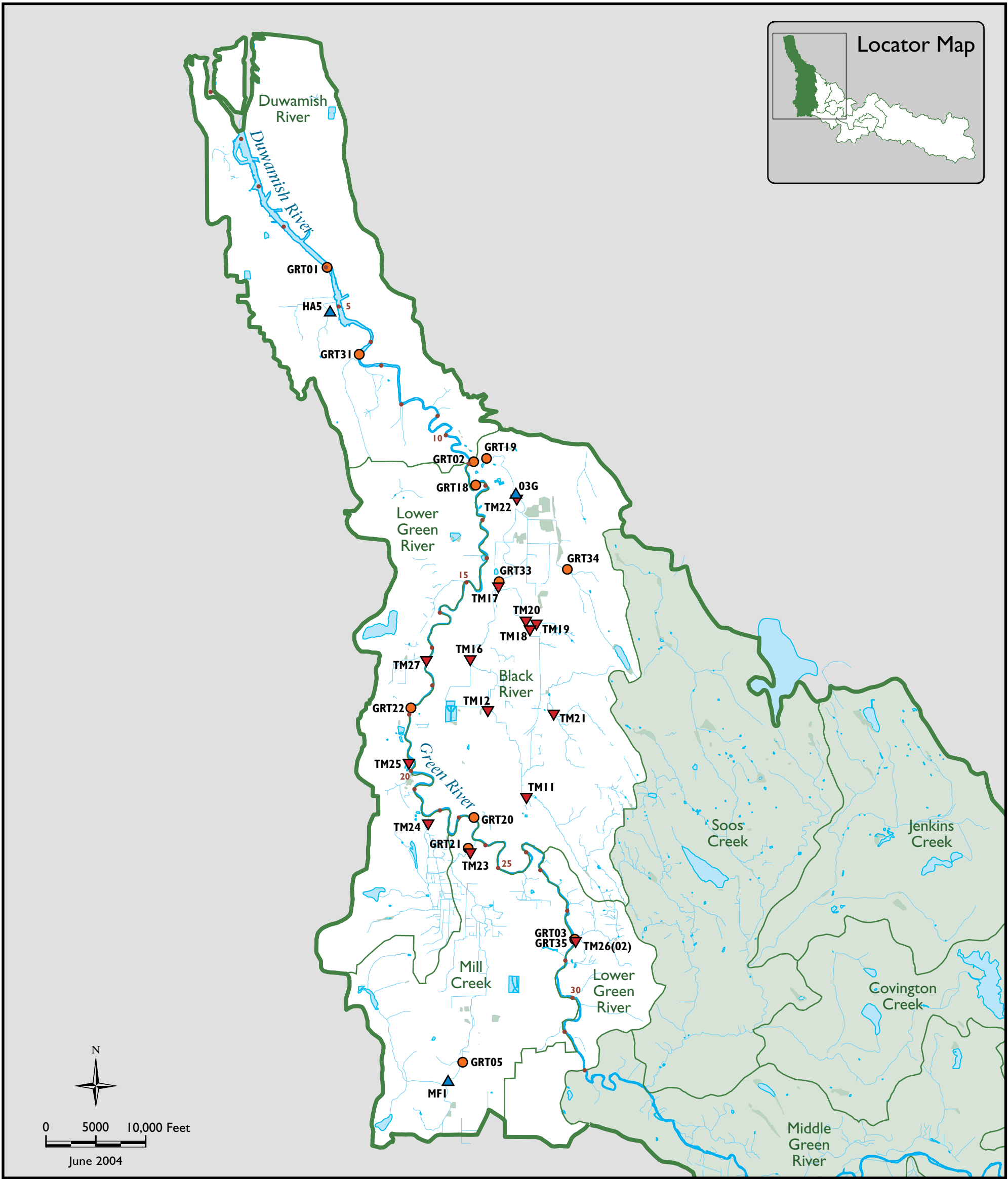
**Average Number of Days
over Criteria per Season**

- No exceedences
- 1-10
- 10-25
- 25-50
- >50

**Average Number of Degrees
over Criteria per Season**

- No exceedences
- 0-1
- 1-3
- 3-5
- >5

- Basin Boundary
- Watershed Boundary
- 25 • River Mile
- River
- Lake
- Wetland



GREEN-DUWAMISH WATERSHED WATER TEMPERATURE REPORT

Figure 14

Duwamish River, Lower Green River, Mill Creek, and Black River Basins: Monitoring Locations

Monitoring Locations

- TM24 ▼ Kent
- MF1 ▲ King County Gage
- GRT35 ● King County GRT

- Basin Boundary
- Watershed Boundary
- River Mile
- River
- Lake
- Wetland

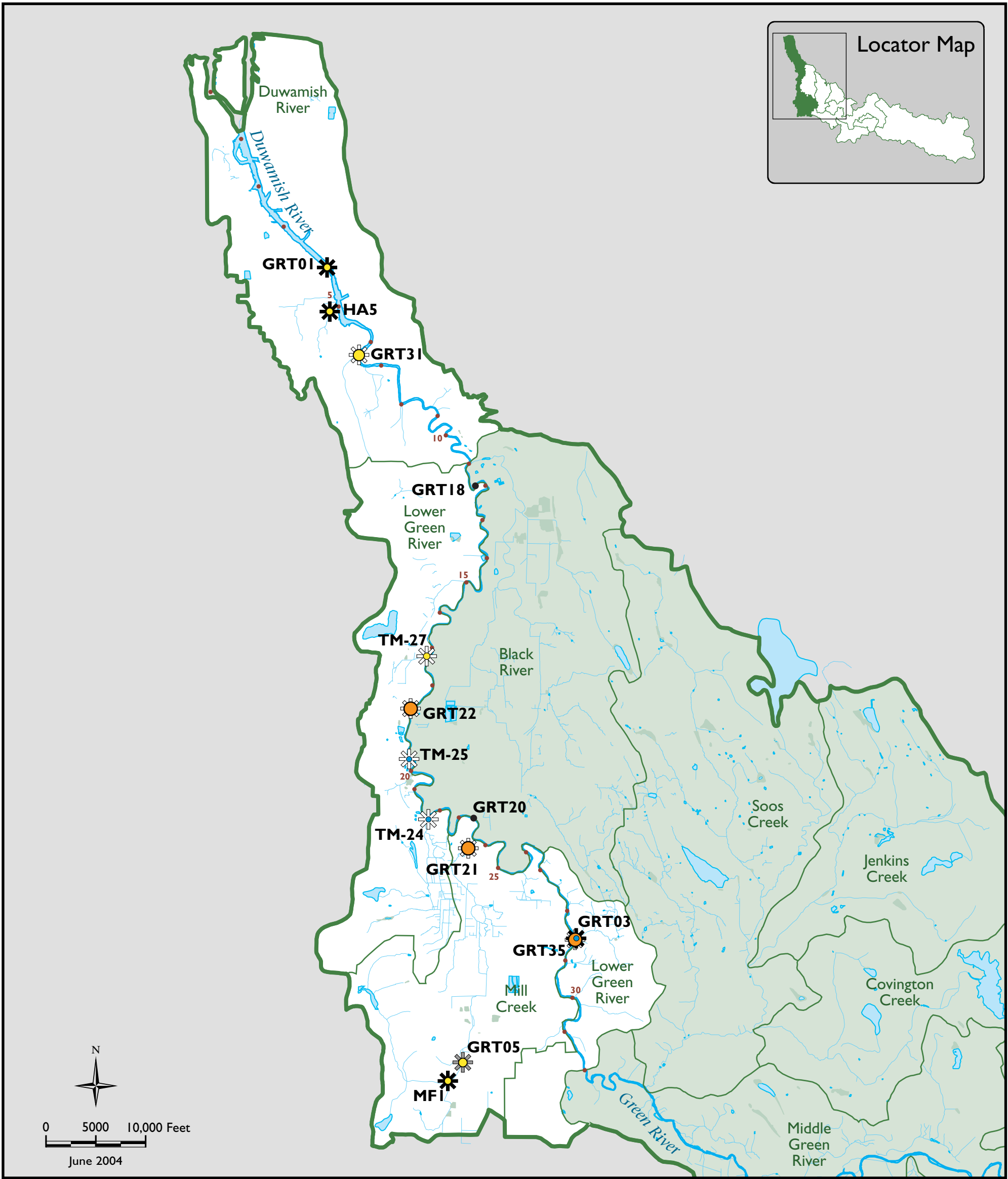


King County

Department of Natural Resources and Parks
Water and Land Resources Division

The information included on this map has been compiled from a variety of sources and is subject to change without notice. King County makes no representations or warranties, express or implied, as to accuracy, completeness, timeliness, or rights to the use of such information. King County shall not be liable for any general, special, indirect, incidental, or consequential damages including, but not limited to, lost revenues or lost profits resulting from the use or misuse of the information contained on this map. Any sale of this map or information on this map is prohibited except by written permission of King County.

Data Sources: City of Kent, Tacoma Public Utilities, University of Washington, Green-Duwamish WQA, and KC GIS
File Name: 0401_14greenTEMPfigduwsites.eps wgab Prepared by: King County DNRP/WLR GIS and Visual Communications & Web Unit



GREEN-DUWAMISH WATERSHED WATER TEMPERATURE REPORT

Figure 15

Duwamish River, Lower Green River, and Mill Creek Basins: Temperature Data with Average Number of Days and Degrees above 1997 Temperature Criterion of 18° C (Duwamish River criterion is 21° C)



King County

Department of Natural Resources and Parks
Water and Land Resources Division

The information included on this map has been compiled from a variety of sources and is subject to change without notice. King County makes no representations or warranties, express or implied, as to accuracy, completeness, timeliness, or rights to the use of such information. King County shall not be liable for any general, special, indirect, incidental, or consequential damages including, but not limited to, lost revenues or lost profits resulting from the use or misuse of the information contained on this map. Any sale of this map or information on this map is prohibited except by written permission of King County.

Data Sources: City of Kent, Tacoma Public Utilities, University of Washington, Green-Duwamish WQA, and KC GIS
File Name: 0401_15greenTEMPduwlr97.eps wgab Prepared by: King County DNRP/WLR GIS and Visual Communications & Web Unit

Number of Seasons Averaged

- None
- ⊗ 1
- ⊗ 2
- ⊗ 3

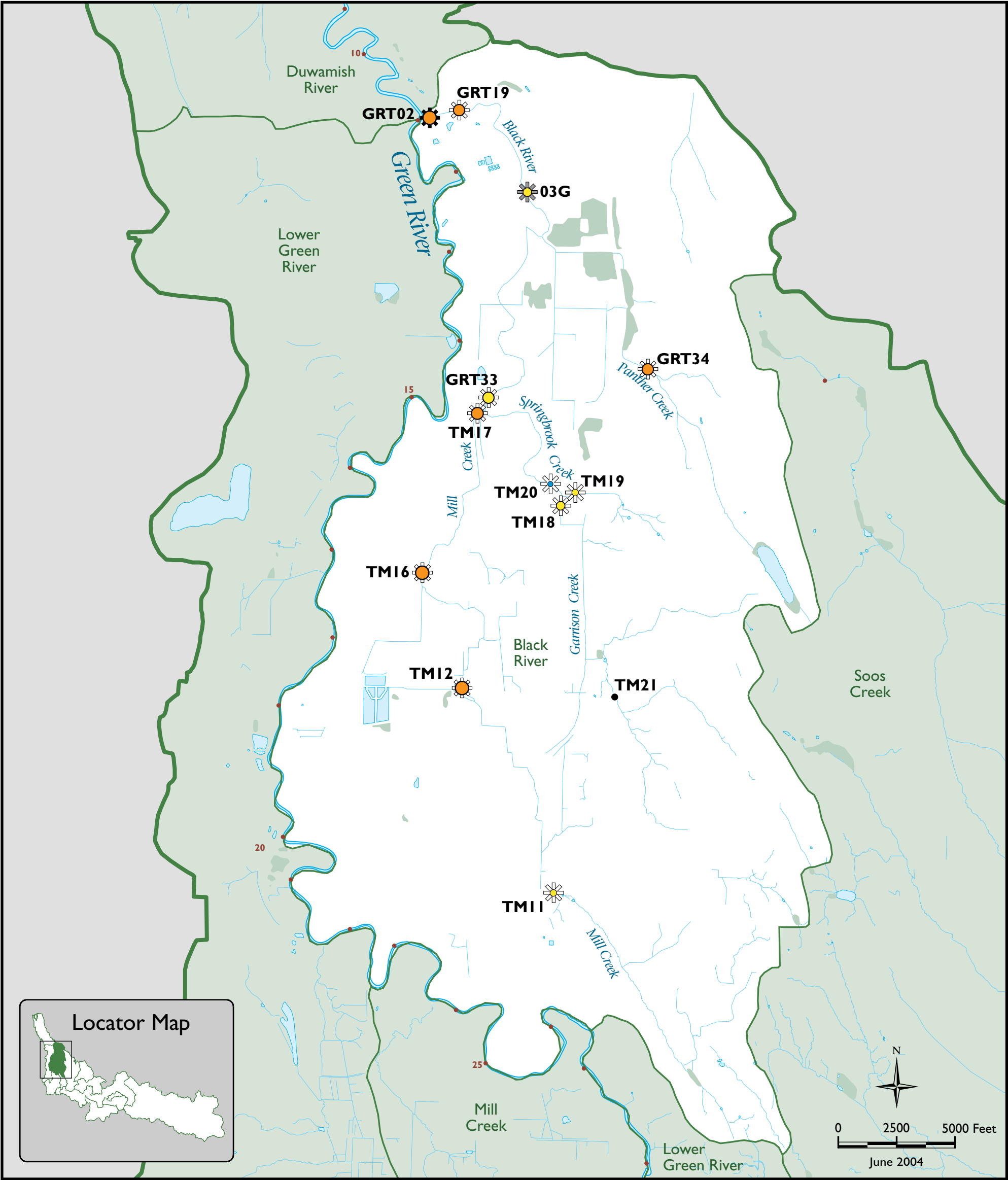
Average Number of Days over Criteria per Season

- No exceedences
- 1-10
- 10-25
- 25-50
- >50

Average Number of Degrees over Criteria per Season

- No exceedences
- 0-1
- 1-3
- 3-5
- >5

- Basin Boundary
- Watershed Boundary
- 25• River Mile
- River
- Lake
- Wetland



GREEN-DUWAMISH WATERSHED WATER TEMPERATURE REPORT

Figure 17
Black River Basin: Temperature Data with Average Number of Days and Degrees above 1997 Temperature Criterion of 18° C



King County

Department of Natural Resources and Parks
Water and Land Resources Division

The information included on this map has been compiled from a variety of sources and is subject to change without notice. King County makes no representations or warranties, express or implied, as to accuracy, completeness, timeliness, or rights to the use of such information. King County shall not be liable for any general, special, indirect, incidental, or consequential damages including, but not limited to, lost revenues or lost profits resulting from the use or misuse of the information contained on this map. Any sale of this map or information on this map is prohibited except by written permission of King County.

Data Sources: City of Kent, Tacoma Public Utilities, University of Washington, Green-Duwamish WQA, and KC GIS
File Name: 0401_17greenTEMPblack97.eps wgalb Prepared by: King County DNRP/WLR GIS and Visual Communications & Web Unit

Number of Seasons Averaged

- None
- ✱ 1
- ✱ 2
- ✱ 3

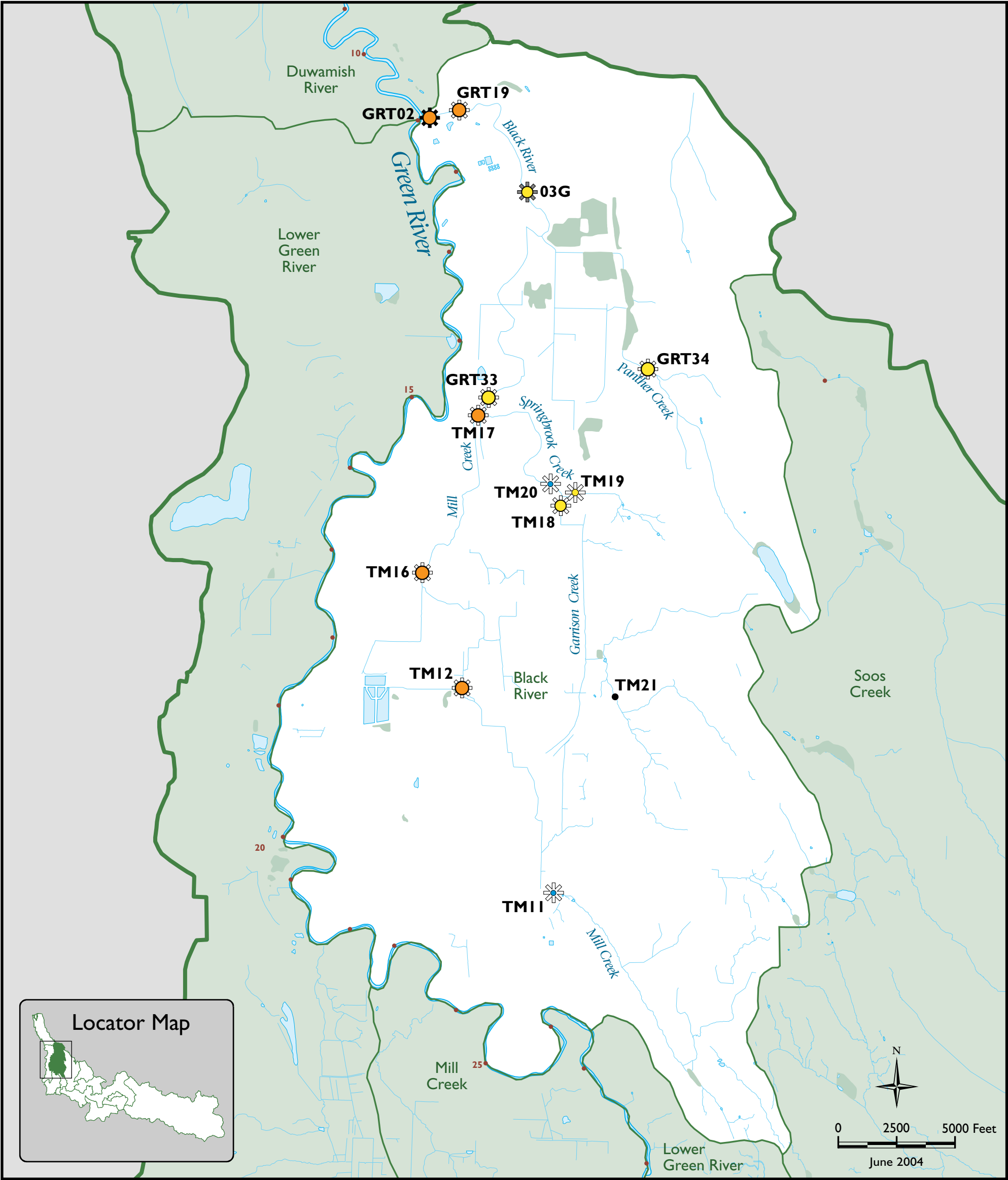
Average Number of Days over Criteria per Season

- No exceedences
- 1-10
- 10-25
- 25-50
- >50

Average Number of Degrees over Criteria per Season

- No exceedences
- 0-1
- 1-3
- 3-5
- >5

- Basin Boundary
- Watershed Boundary
- 25 • River Mile
- River
- Lake
- Wetland



GREEN-DUWAMISH WATERSHED WATER TEMPERATURE REPORT

Figure 18
Black River Basin: Temperature Data with Average Number of Days and Degrees above 2003 Migration and Rearing Criterion of 17.5° C



King County
Department of Natural Resources and Parks
Water and Land Resources Division

The information included on this map has been compiled from a variety of sources and is subject to change without notice. King County makes no representations or warranties, express or implied, as to accuracy, completeness, timeliness, or rights to the use of such information. King County shall not be liable for any general, special, indirect, incidental, or consequential damages including, but not limited to, lost revenues or lost profits resulting from the use or misuse of the information contained on this map. Any sale of this map or information on this map is prohibited except by written permission of King County.
Data Sources: City of Kent, Tacoma Public Utilities, University of Washington, Green-Duwamish WQA, and KC GIS
File Name: 0401_18greenTEMPblackMR.reps wgab Prepared by: King County DNR/P/WLR GIS and Visual Communications & Web Unit

Number of Seasons Averaged

- None
- ✱ 1
- ✱ 2
- ✱ 3

Average Number of Days over Criteria per Season

- No exceedences
- 1-10
- 10-25
- 25-50
- >50

Average Number of Degrees over Criteria per Season

- No exceedences
- 0-1
- 1-3
- 3-5
- >5

- Basin Boundary
- Watershed Boundary
- 25 • River Mile
- River
- Lake
- Wetland

**GREEN-DUWAMISH WATERSHED
WATER TEMPERATURE REPORT**

Figure 19

Compilation of Temperature Data along
the Green-Duamish River
(2003 Migration and Rearing Criteria
ranges from 17.5° C to 12° C; in
addition, refer to Figures 4, 7, and 16)

**Number of
Seasons Averaged**

- None
- ☼ 1
- ☼☼ 2
- ☼☼☼ 3

**Average Number
of Degrees over
Criteria per Season**

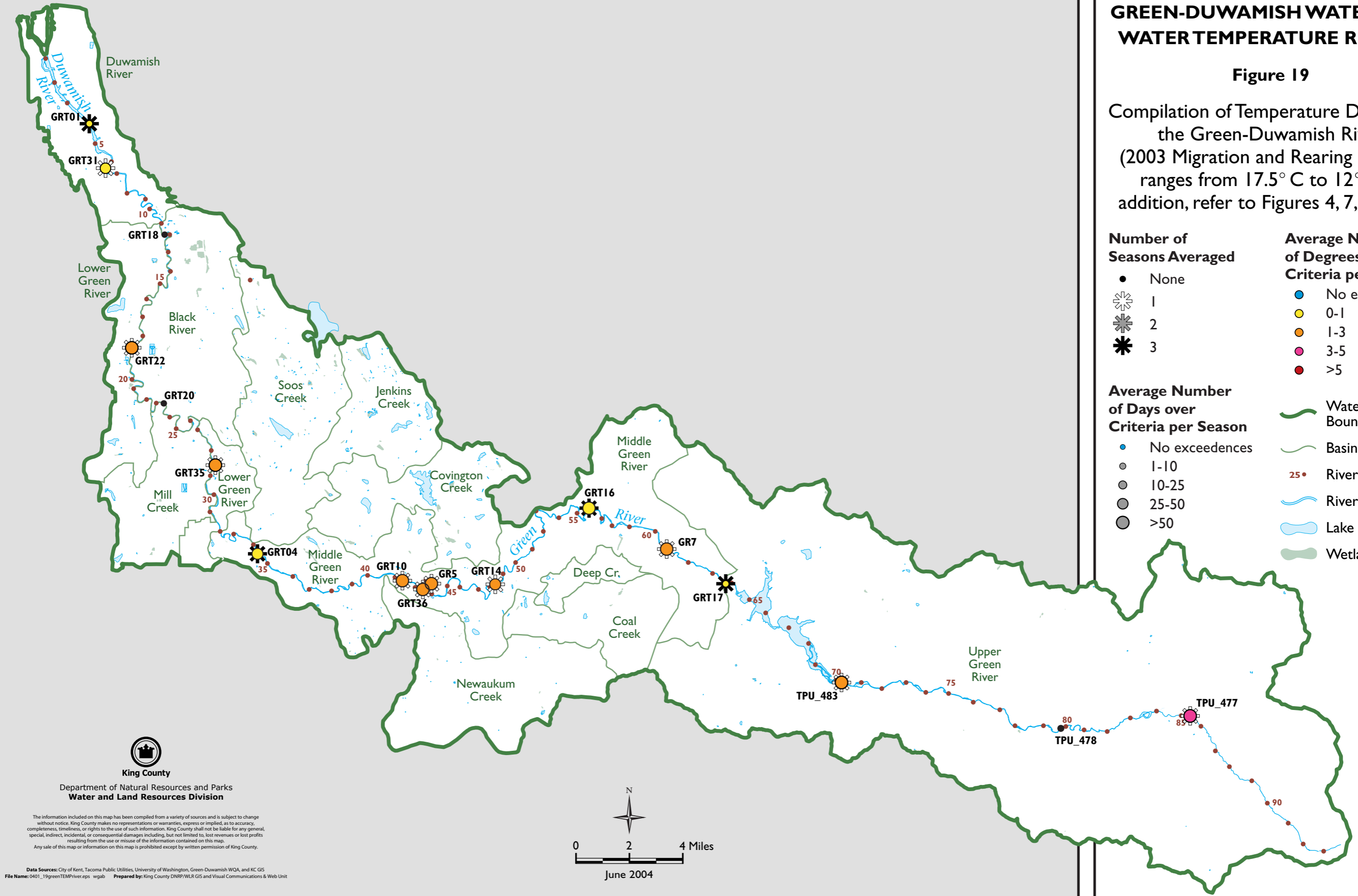
- No exceedences
- 0-1
- 1-3
- 3-5
- >5

**Average Number
of Days over
Criteria per Season**

- No exceedences
- 1-10
- 10-25
- 25-50
- >50

Legend

- Watershed Boundary
- Basin Boundary
- 25 • River Mile
- River
- Lake
- Wetland



King County
Department of Natural Resources and Parks
Water and Land Resources Division

The information included on this map has been compiled from a variety of sources and is subject to change without notice. King County makes no representations or warranties, express or implied, as to accuracy, completeness, timeliness, or rights to the use of such information. King County shall not be liable for any general, special, indirect, incidental, or consequential damages including, but not limited to, lost revenues or lost profits resulting from the use or misuse of the information contained on this map.
Any sale of this map or information on this map is prohibited except by written permission of King County.



Data Sources: City of Kent, Tacoma Public Utilities, University of Washington, Green-Duamish WQA, and KC GIS
File Name: 0401_19greenTEMPriver.aprx - wgab Prepared by: King County DNRP/WLR GIS and Visual Communications & Web Unit