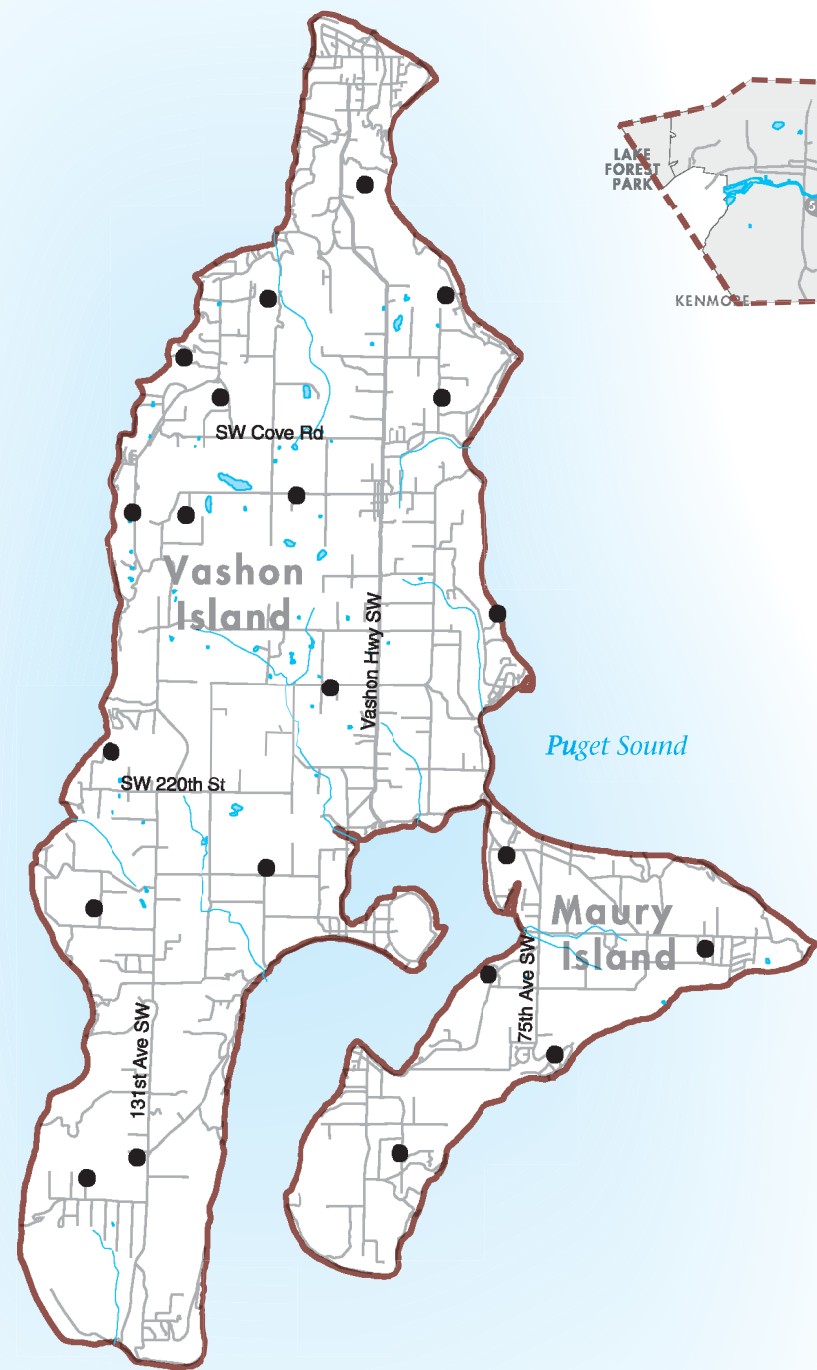
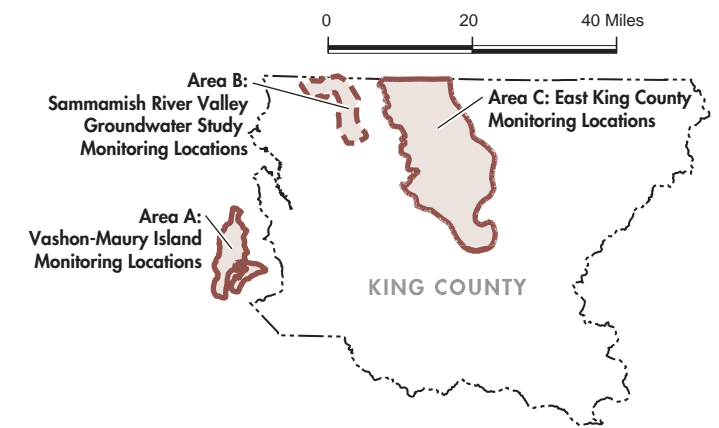
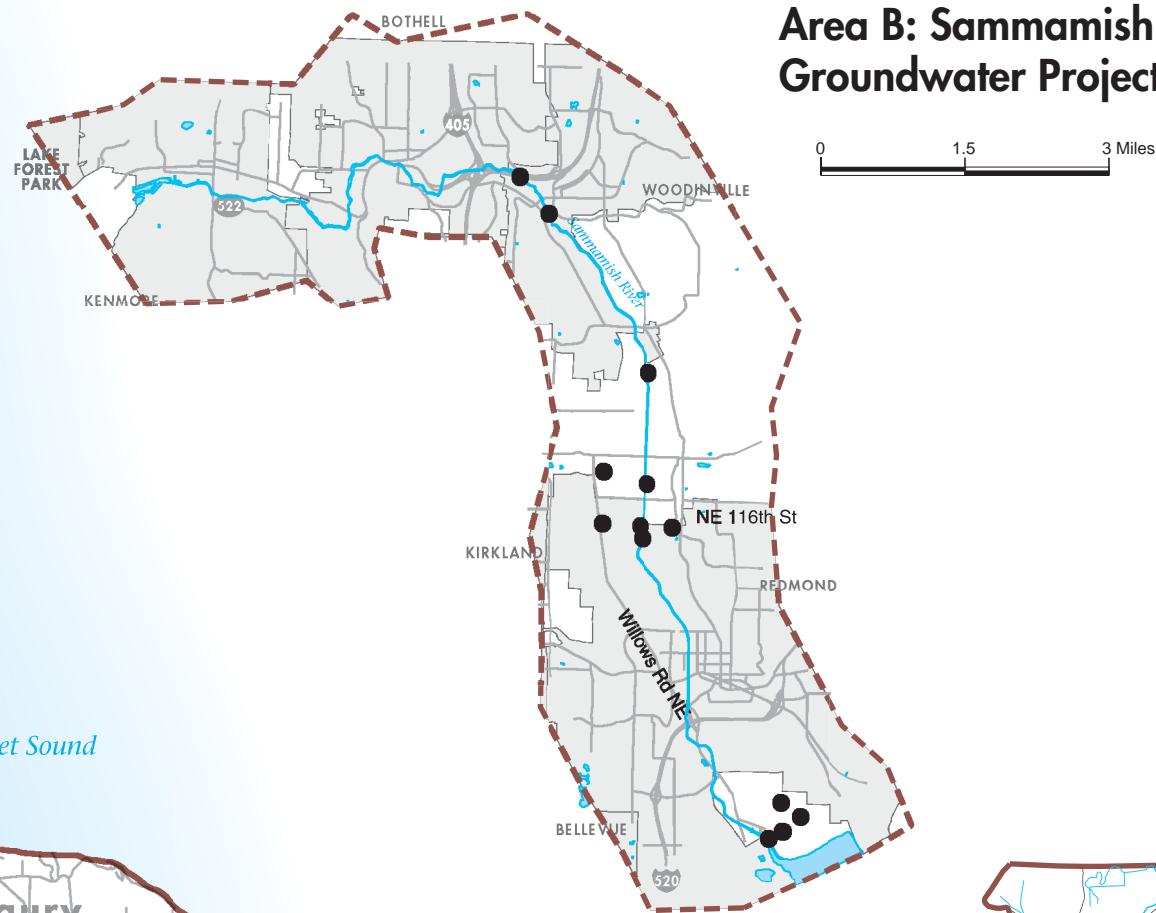
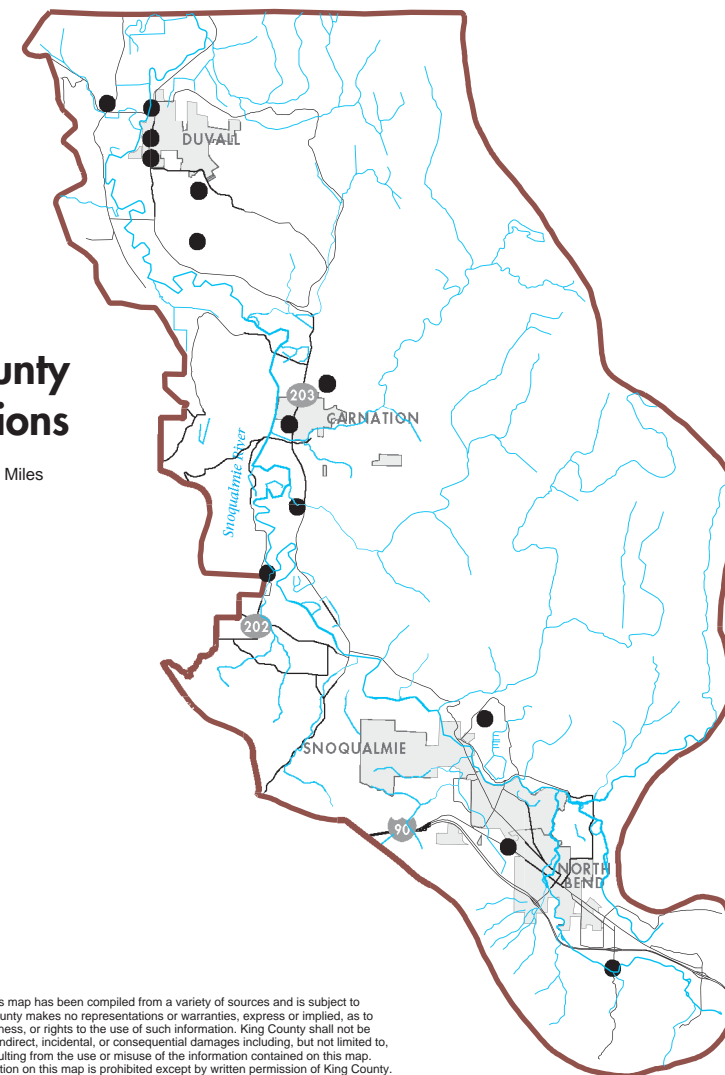


Area B: Sammamish River Valley Groundwater Project Monitoring Locations



Area C: East King County Monitoring Locations



Map 2
Groundwater Monitoring Locations in 2003
King County Groundwater Protection Program

- King County Monitoring Well
- Groundwater Management Area Boundary
- - - Groundwater Study Area
- - - County Boundary
- Major Road
- River
- Stream
- Lake or Open Water
- Incorporated Area

Area A: Vashon-Maury Island Monitoring Locations



April 2004

Produced by: Department of Natural Resources and Parks
GIS and Visual Communications & Web Units,
File Name: 0403_map_2_GW_monitoring.eps mdev



Sources and notes:
All data are from King County GIS databases

The information included on this map has been compiled from a variety of sources and is subject to change without notice. King County makes no representations or warranties, express or implied, as to accuracy, completeness, timeliness, or rights to the use of such information. King County shall not be liable for any general, special, indirect, incidental, or consequential damages including, but not limited to, lost revenues or lost profits resulting from the use or misuse of the information contained on this map. Any sale of this map or information on this map is prohibited except by written permission of King County.