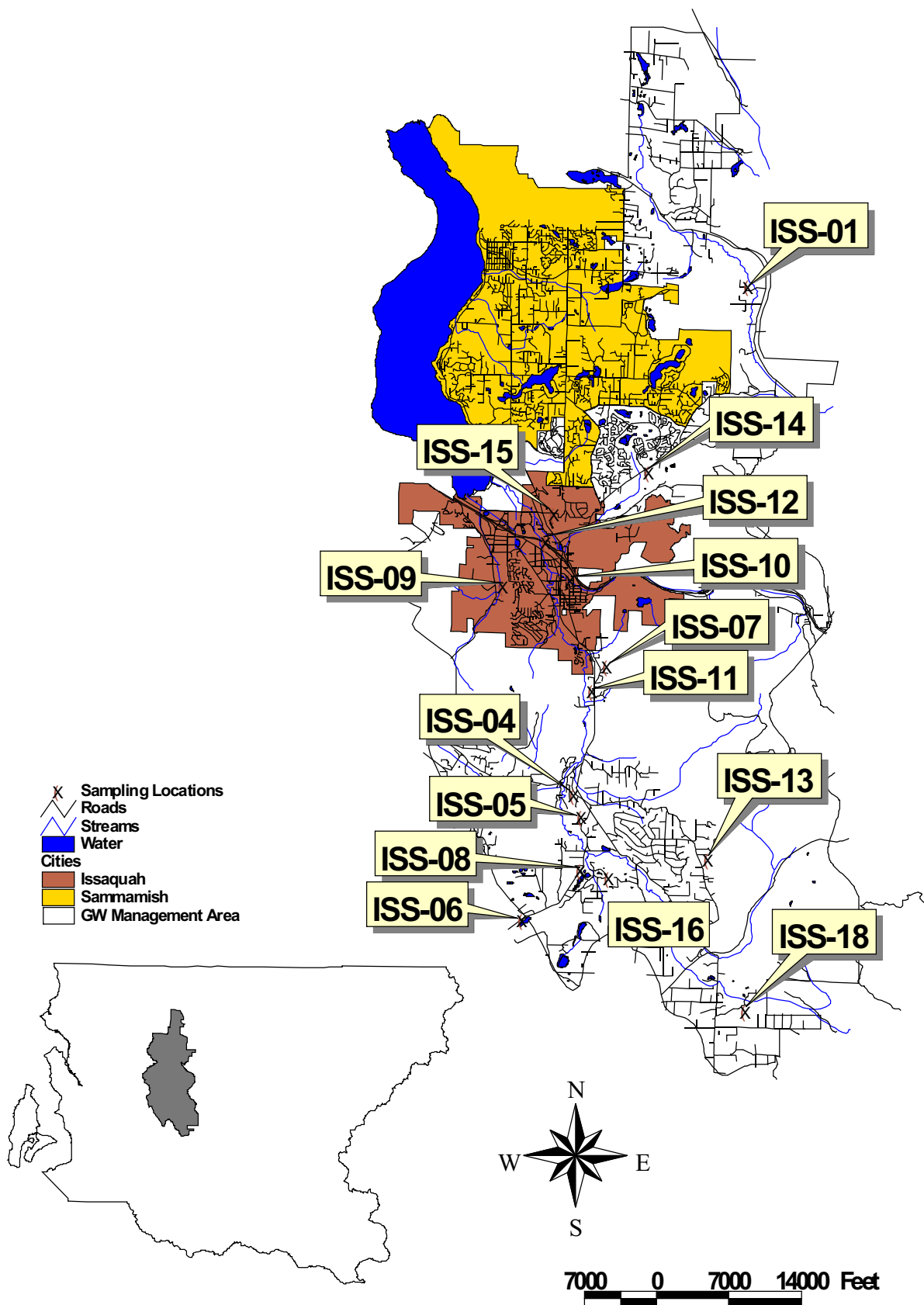
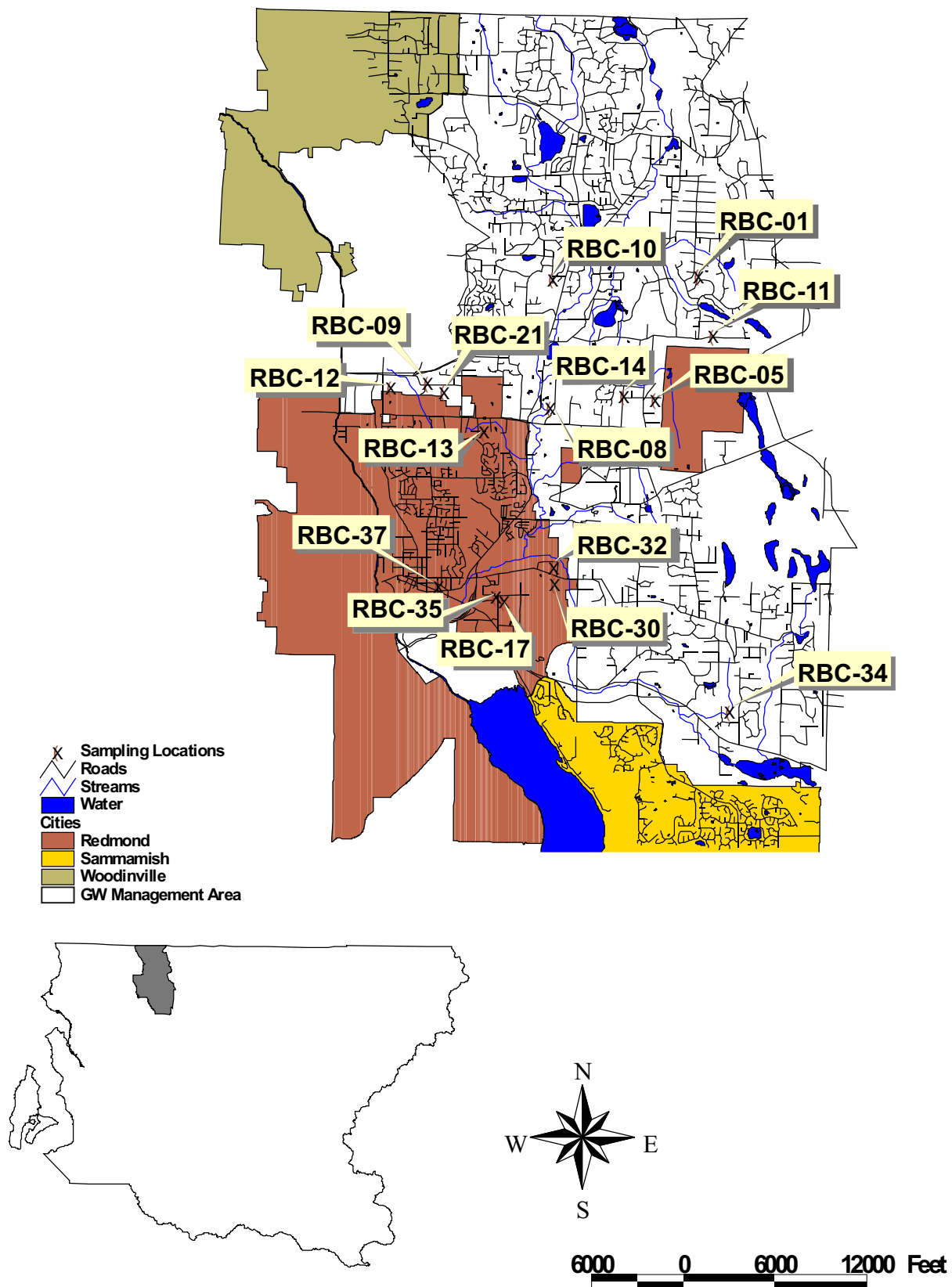


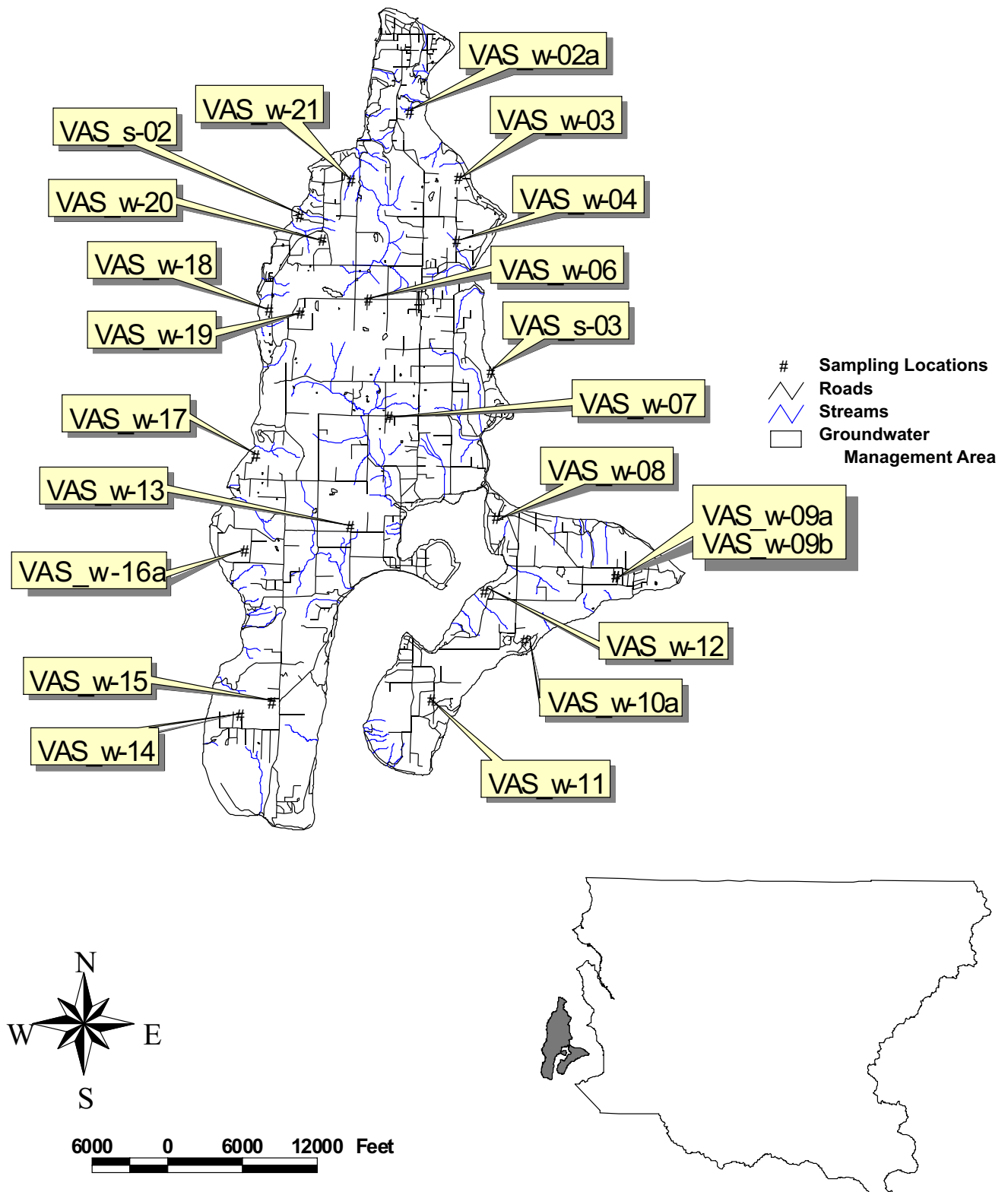
**Figure 2A**  
Well Locations: East King County GWMA  
King County Ambient  
Groundwater Monitoring Program



**Figure 2B**  
Well Locations: Issaquah Creek GWMA  
King County Ambient  
Groundwater Monitoring Program



**Figure 2C**  
Well Locations: Redmond-Bear Creek GWMA  
King County Ambient  
Groundwater Monitoring Program



**Figure 2D**  
Well Locations: Vashon-Maury Island GWMA  
King County Ambient  
Groundwater Monitoring Program