
King County Watershed Modeling Services – Green River Water Quality Assessment, and Sammamish-Washington, Analysis and Modeling Program Watershed Modeling Calibration Report

In Progress



King County

Department of Natural Resources and Parks
Water and Land Resources Division

Science Section

King Street Center, KSC-NR-0600
201 South Jackson Street, Suite 600
Seattle, WA 98104
206-296-6519 TTY Relay: 711
dnr.metrokc.gov/wlr

Section 8—Appendix B

July 2003

Prepared for:



King County

Department of Natural Resources and Parks
Water and Land Resources Division

201 S. Jackson St, Suite 600
Seattle, WA 98104
206-296-6519
<http://www.metrokc.gov/>

Prepared by:

AQUA TERRA CONSULTANTS
1509 Hewitt Avenue, Suite 121
Everett, Washington 98201
and
2685 Marine Way, Suite 1314
Mountain View, California 94043

In conjunction with King County

Alternative formats available

206-263-6317 TTY Relay: 711

Appendix B: Water Quality Plots for Monitoring Stations Upstream from Outlet

Water Quality Plots for Monitoring Stations Upstream of Outlet

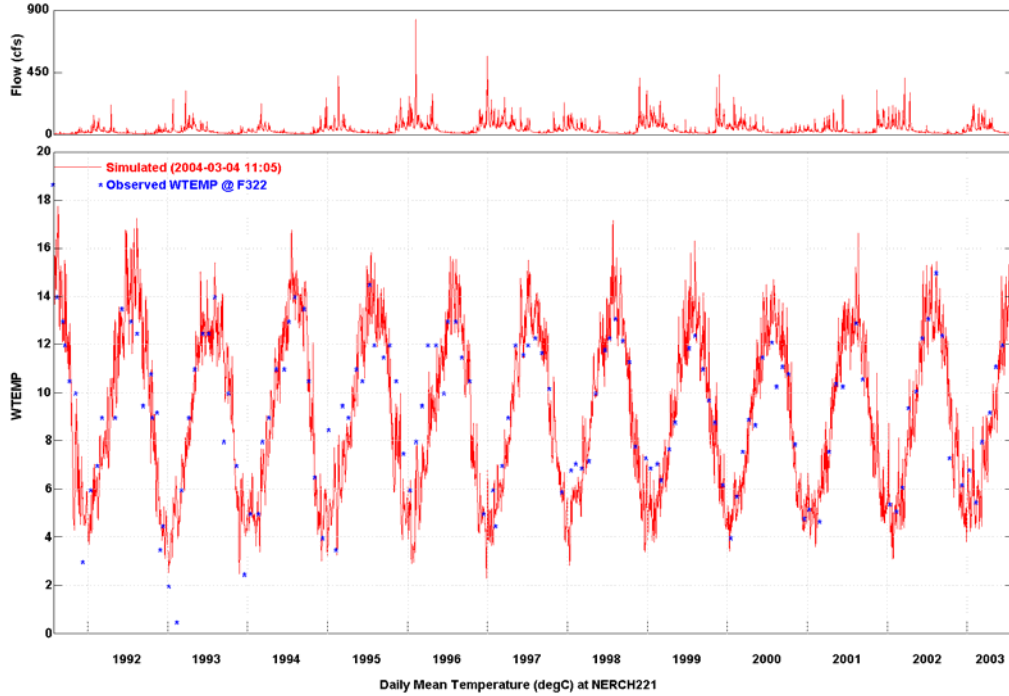


Figure B.1-1 Observed and Simulated Daily Water Temperature for Newaukum Creek at Station F322

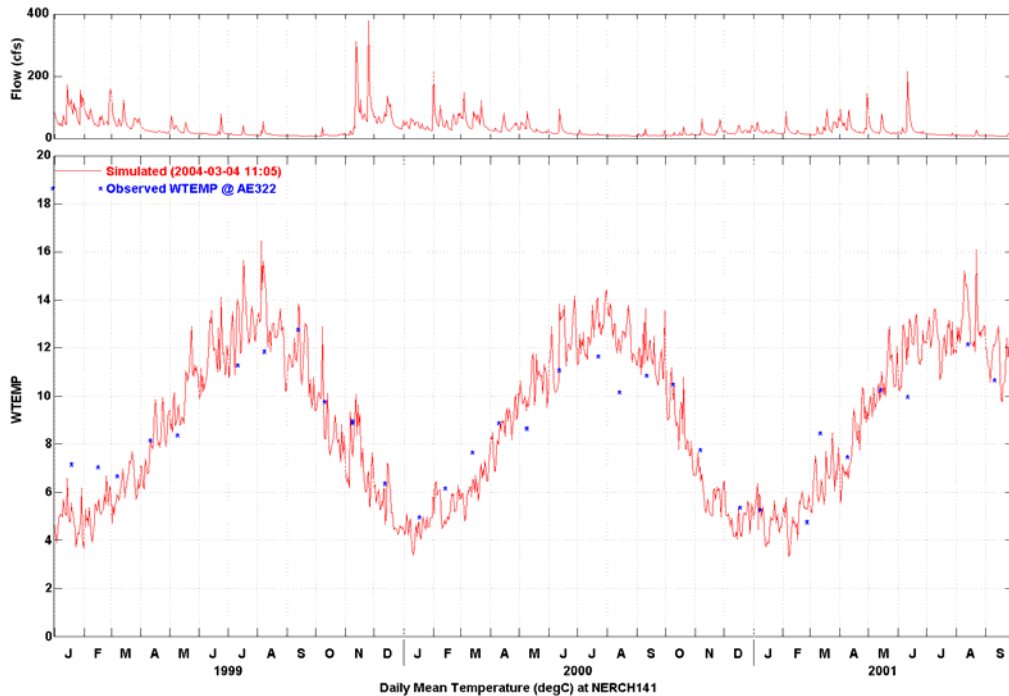


Figure B.1-2 Observed and Simulated Daily Water Temperature for Newaukum Creek at AE322

Water Quality Plots for Monitoring Stations Upstream of Outlet

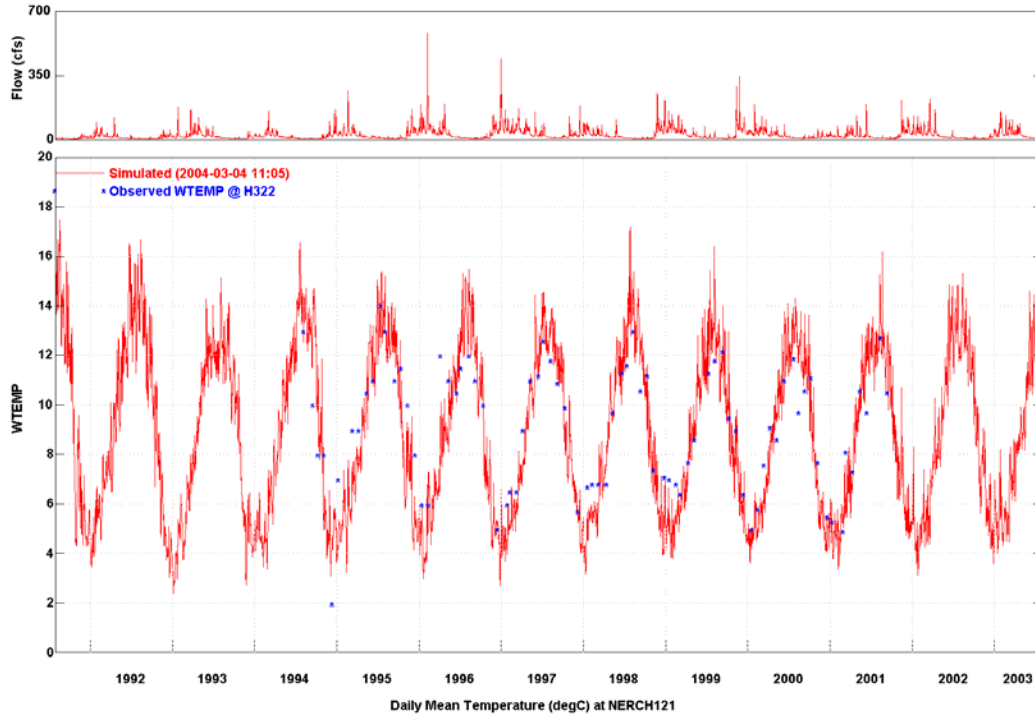


Figure B.1-3 Observed and Simulated Daily Water Temperature for Newaukum Creek at Station H322

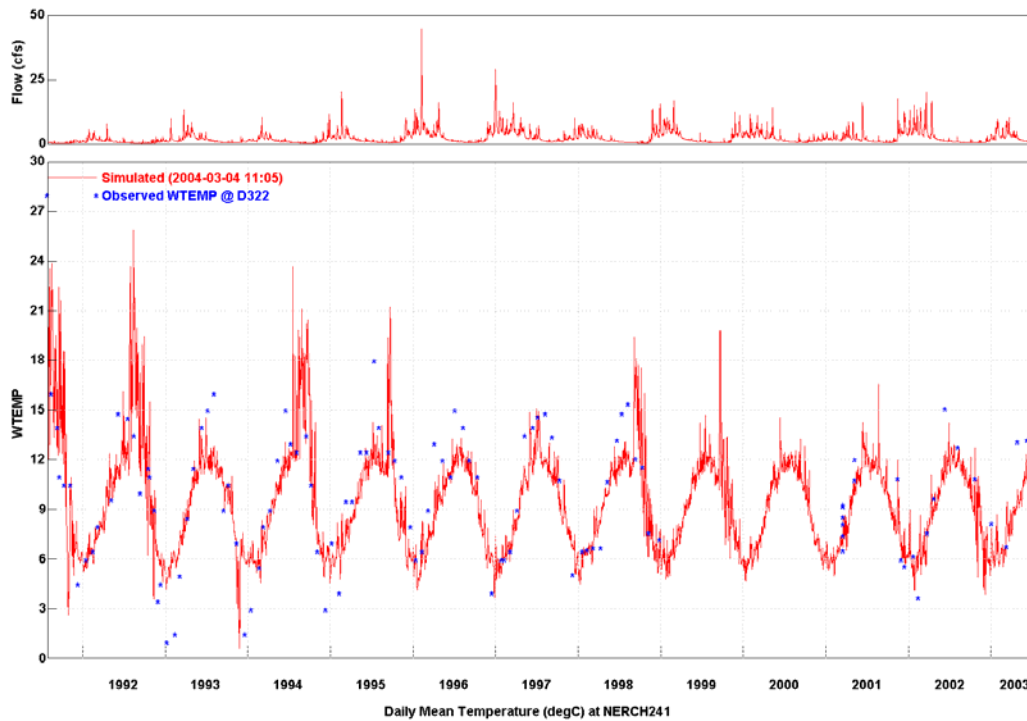


Figure B.1-4 Observed and Simulated Daily Water Temperature for Newaukum Creek at Station D322

Water Quality Plots for Monitoring Stations Upstream of Outlet

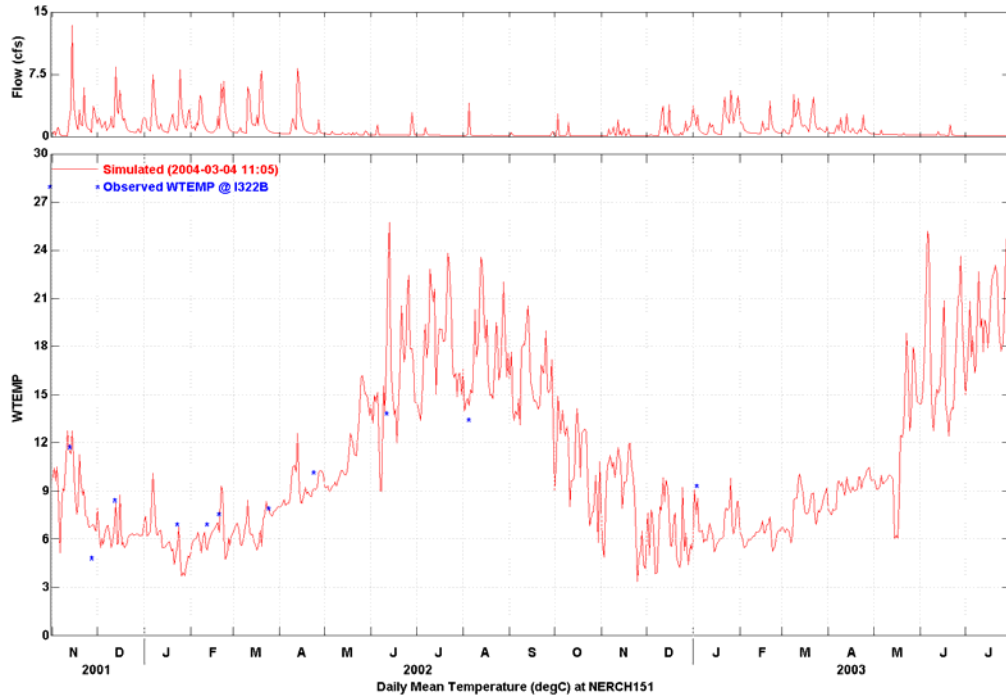


Figure B.1-5 Observed and Simulated Daily Water Temperature for Newaukum Creek at Station I322B

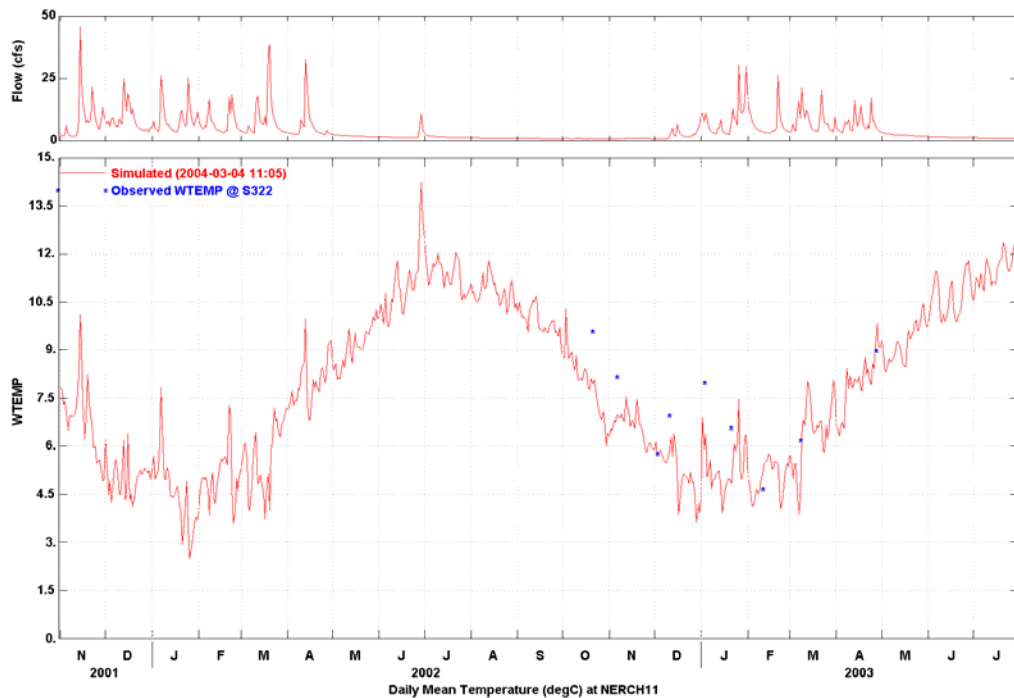


Figure B.1-6 Observed and Simulated Daily Water Temperature for Newaukum Creek at Station S322

Water Quality Plots for Monitoring Stations Upstream of Outlet

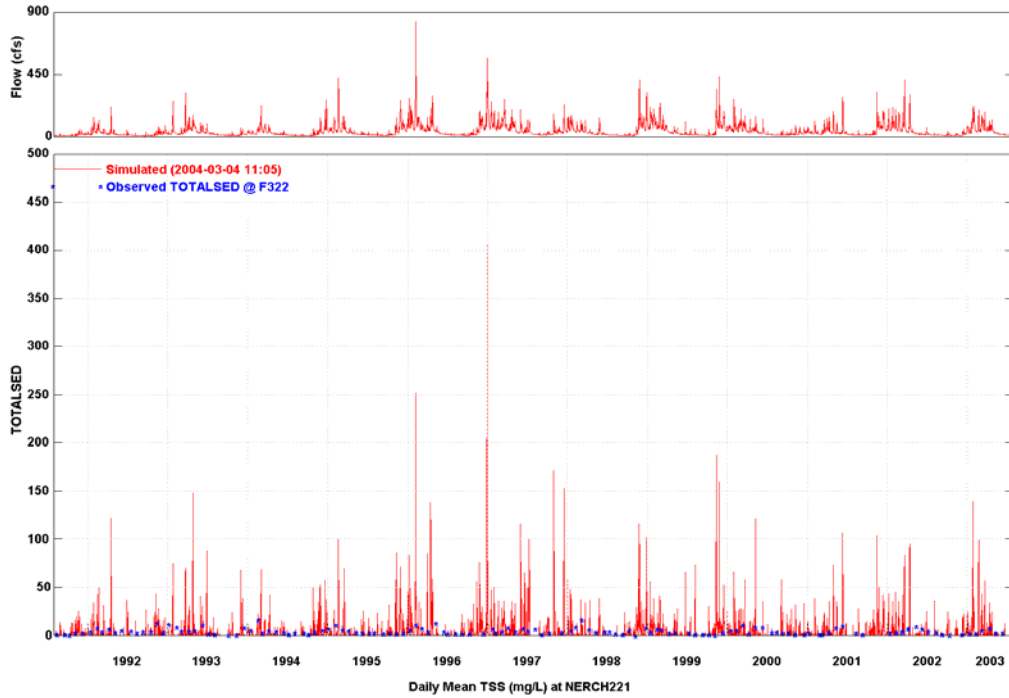


Figure B.2-1 Observed and Simulated Daily Suspended Sediment Concentrations for Newaukum Creek at Station F322

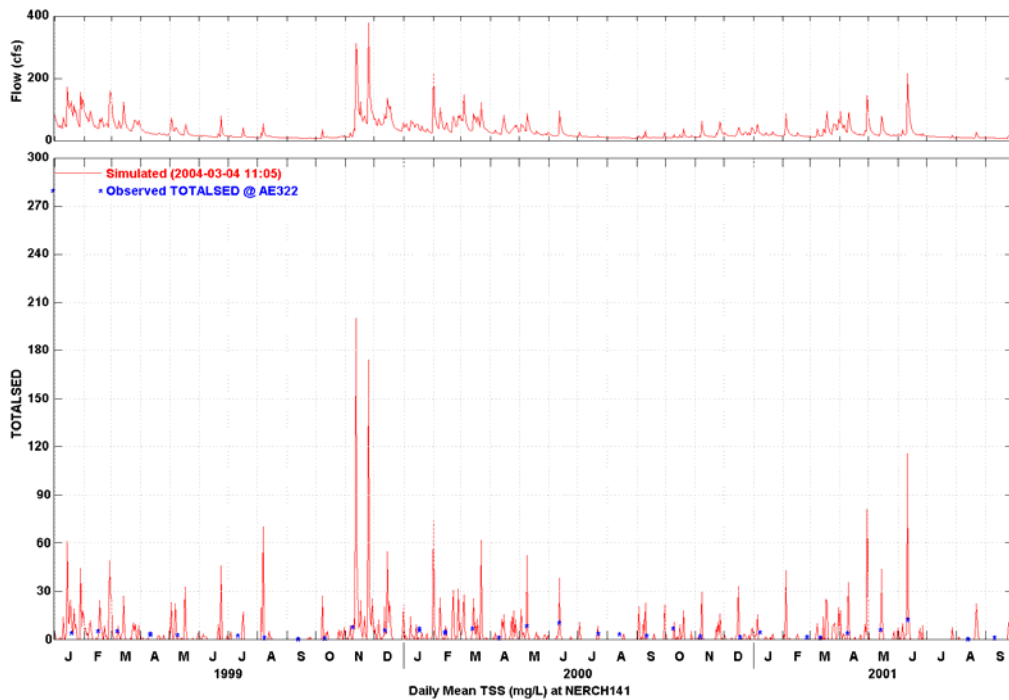


Figure B.2-2 Observed and Simulated Daily Suspended Sediment Concentrations for Newaukum Creek at Station AE322

Water Quality Plots for Monitoring Stations Upstream of Outlet

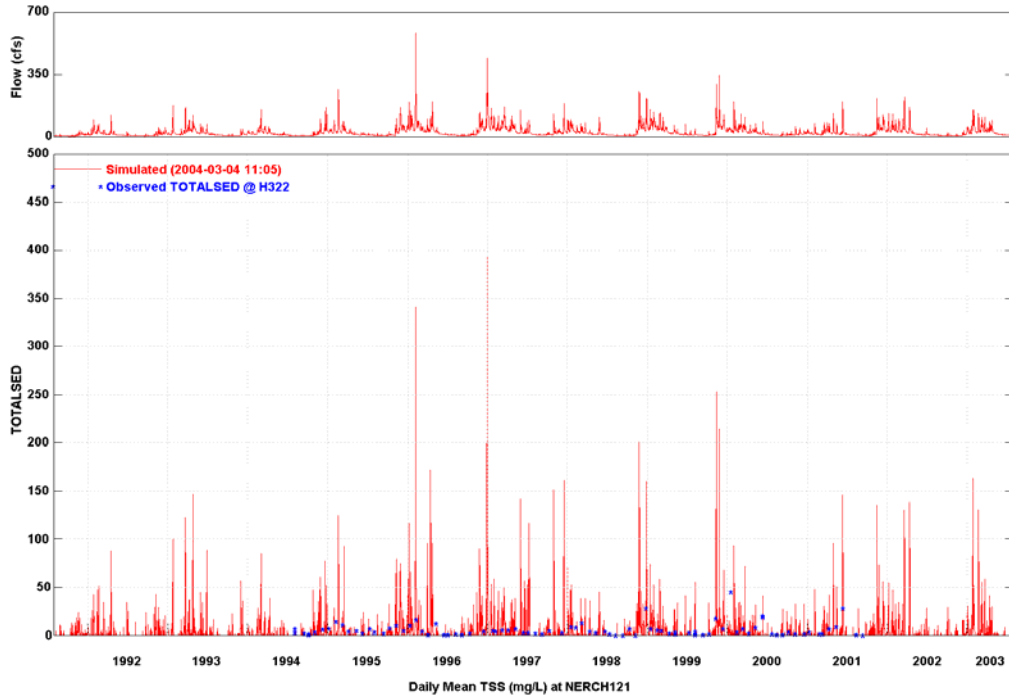


Figure B.2-3 Observed and Simulated Daily Suspended Sediment Concentrations for Newaukum Creek at Station H322

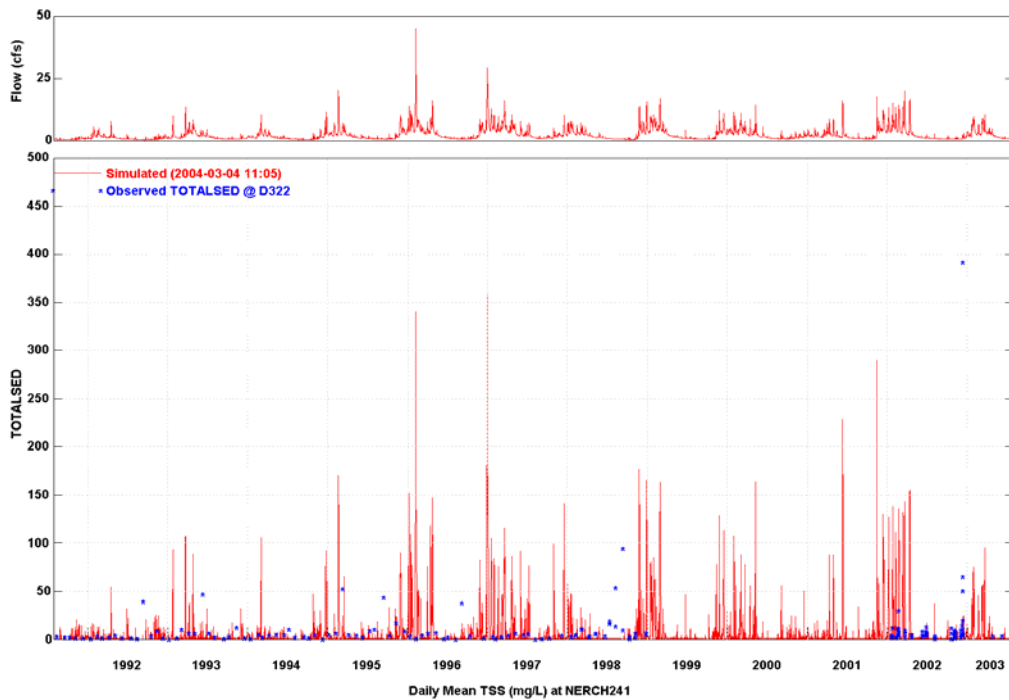


Figure B.2-4 Observed and Simulated Daily Suspended Sediment Concentrations for Newaukum Creek at Station D322

Water Quality Plots for Monitoring Stations Upstream of Outlet

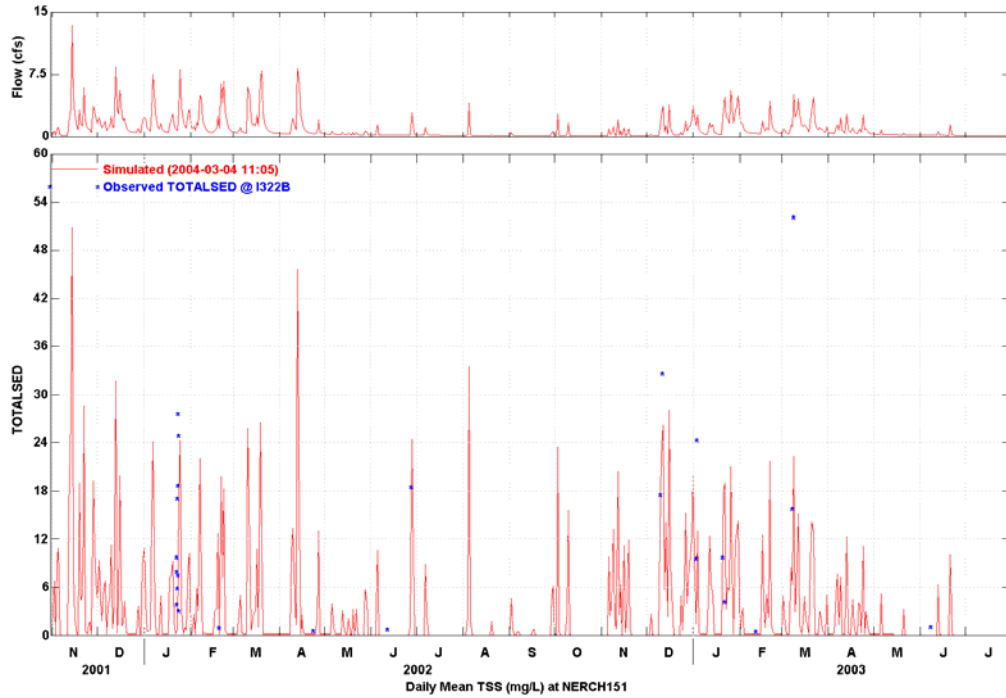


Figure B.2-5 Observed and Simulated Daily Suspended Sediment Concentrations for Newaukum Creek at Station I322B

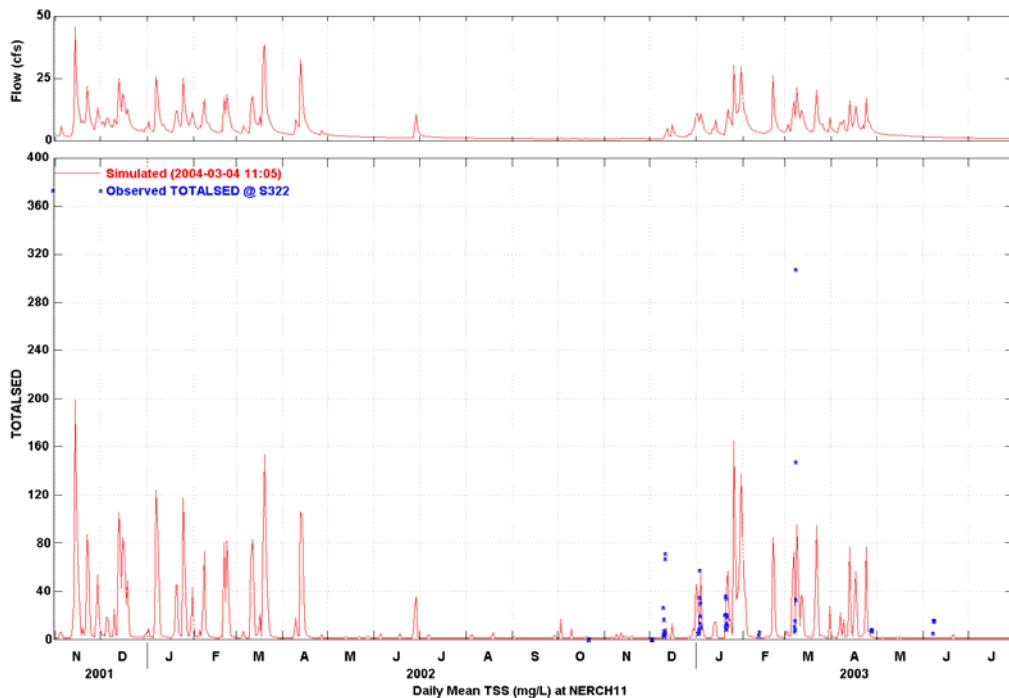


Figure B.2-6 Observed and Simulated Daily Suspended Sediment Concentrations for Newaukum Creek at Station S322

Water Quality Plots for Monitoring Stations Upstream of Outlet

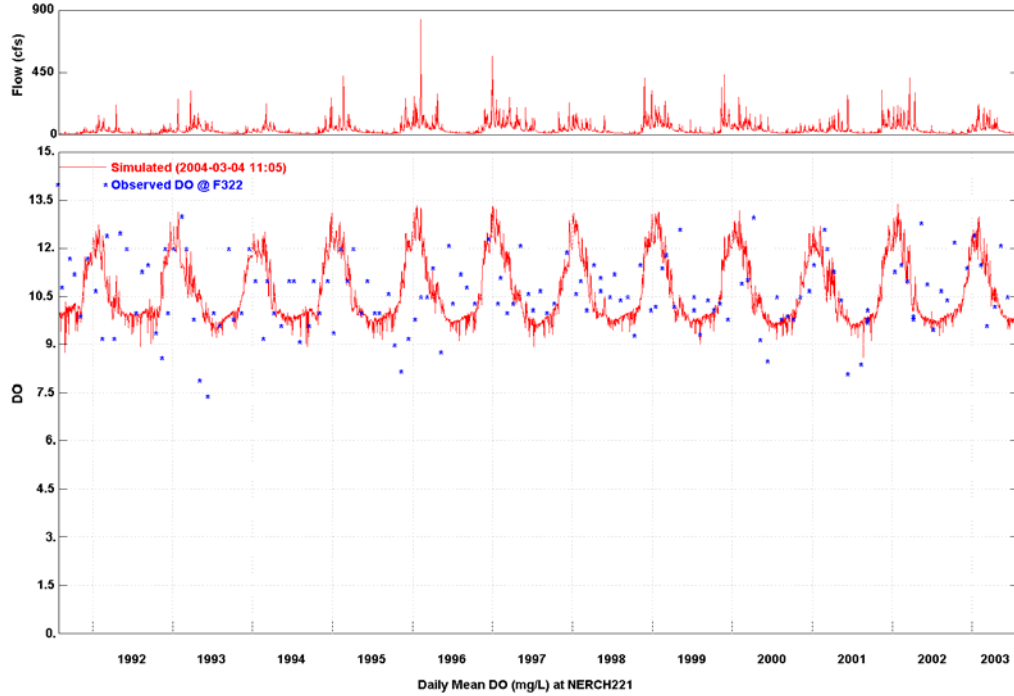


Figure B.3-1 Observed and Simulated Daily Dissolved Oxygen Concentrations for Newaukum Creek at Station F322

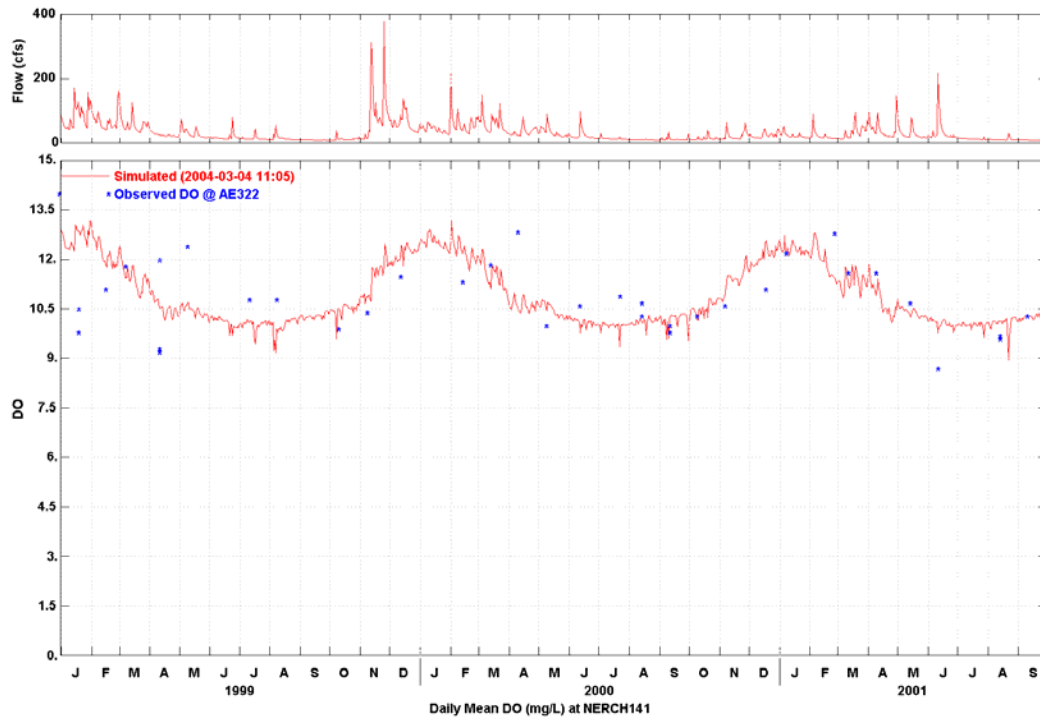


Figure B.3-2 Observed and Simulated Daily Dissolved Oxygen Concentrations for Newaukum Creek at Station AE322

Water Quality Plots for Monitoring Stations Upstream of Outlet

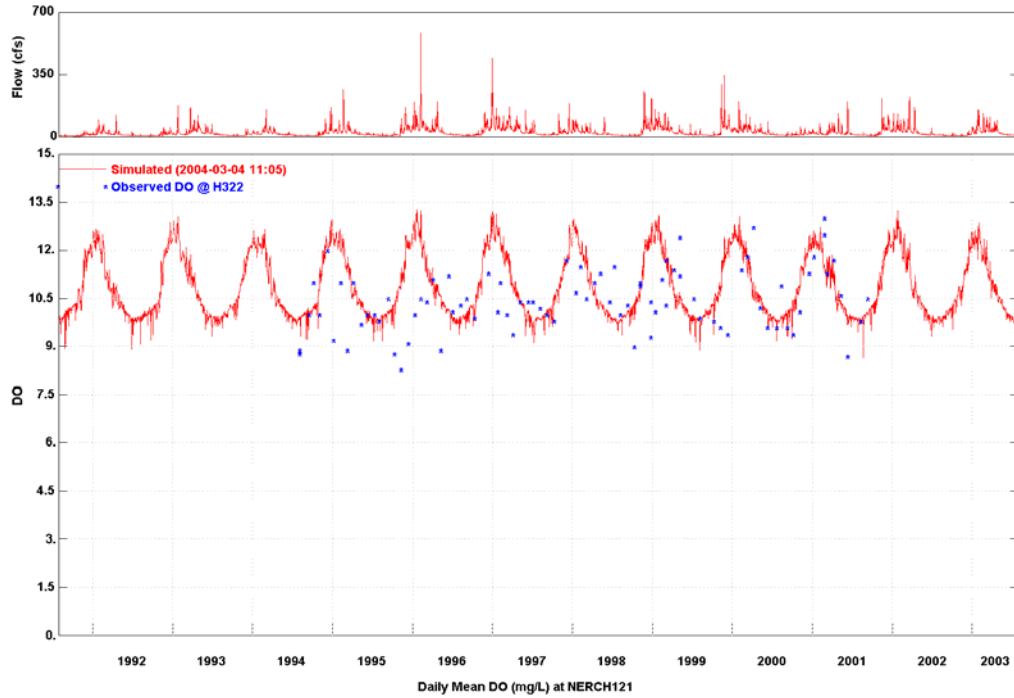


Figure B.3-3 Observed and Simulated Daily Dissolved Oxygen Concentrations for Newaukum Creek at Station H322

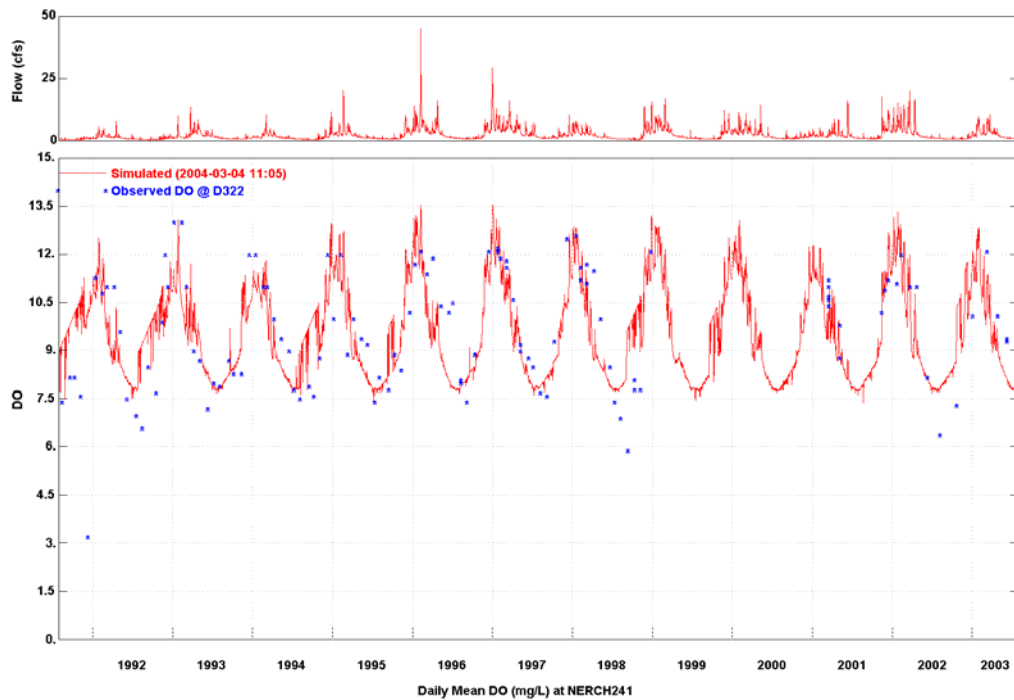


Figure B.3-4 Observed and Simulated Daily Dissolved Oxygen Concentrations for Newaukum Creek at Station D322

Water Quality Plots for Monitoring Stations Upstream of Outlet

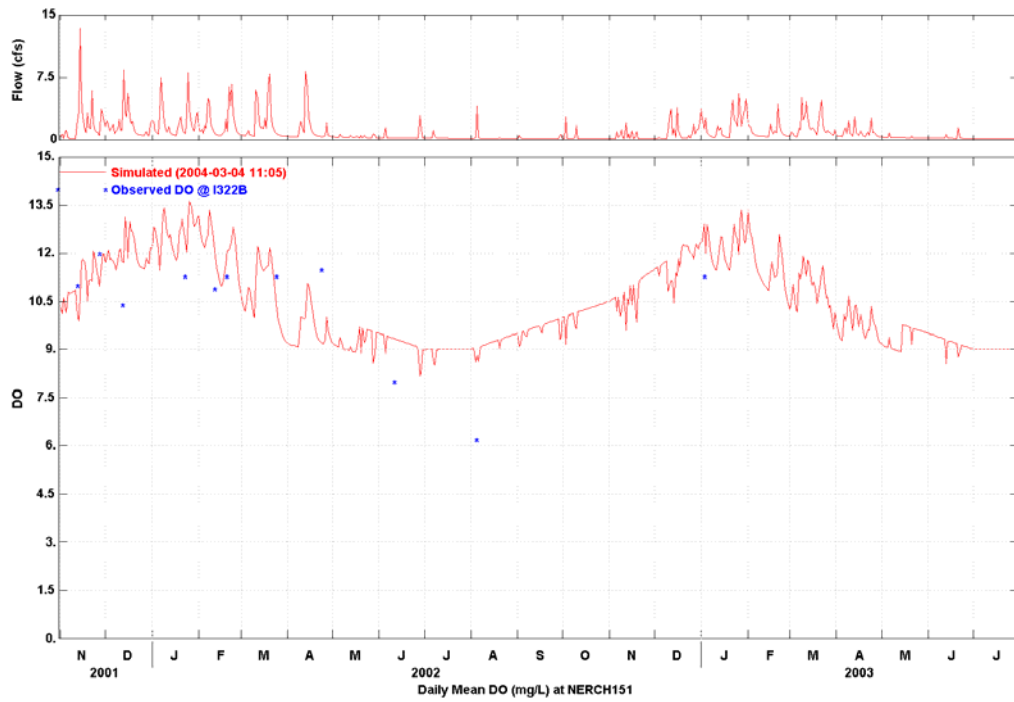


Figure B.3-5 Observed and Simulated Daily Dissolved Oxygen Concentrations for Newaukum Creek at Station I322B

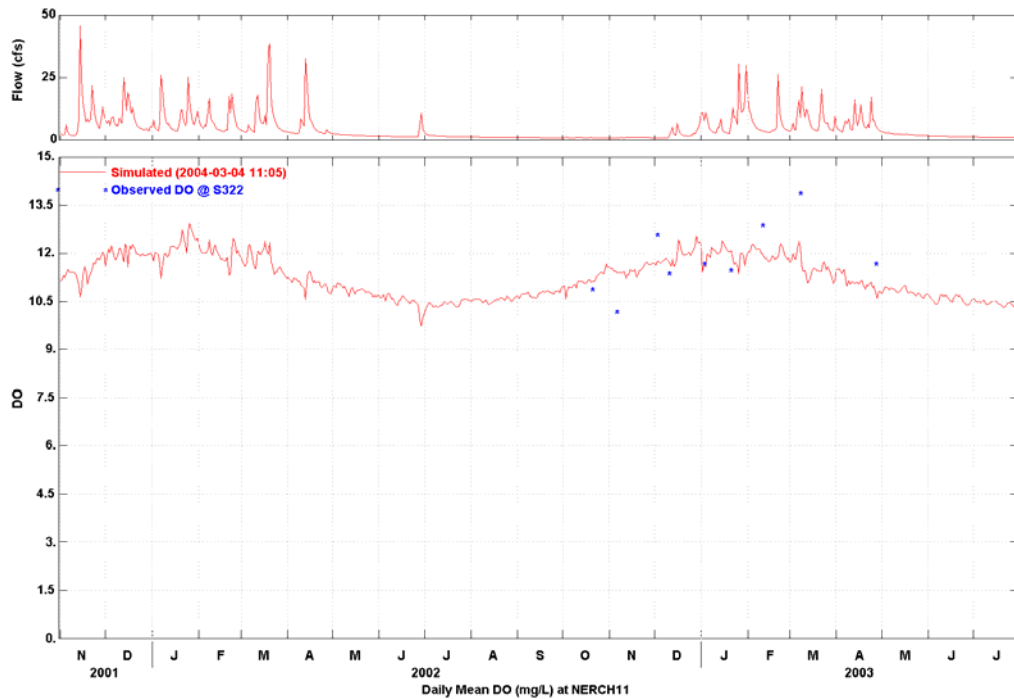


Figure B.3-6 Observed and Simulated Daily Dissolved Oxygen Concentrations for Newaukum Creek at Station S322

Water Quality Plots for Monitoring Stations Upstream of Outlet

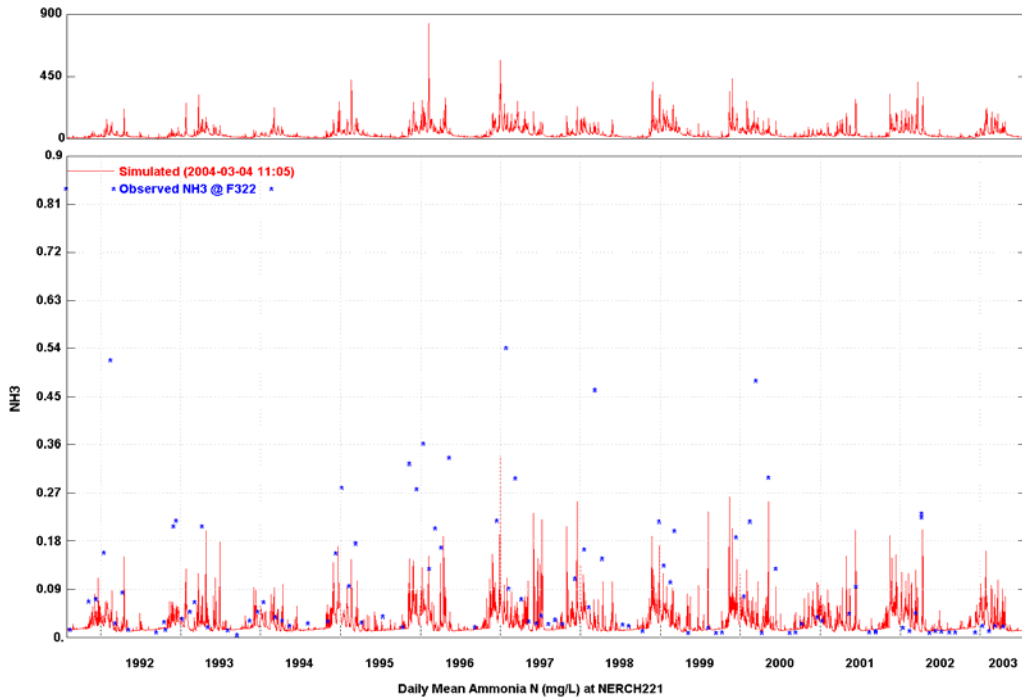


Figure B.4-1 Observed and Simulated Daily Ammonia Concentrations for Newaukum Creek at Station F322

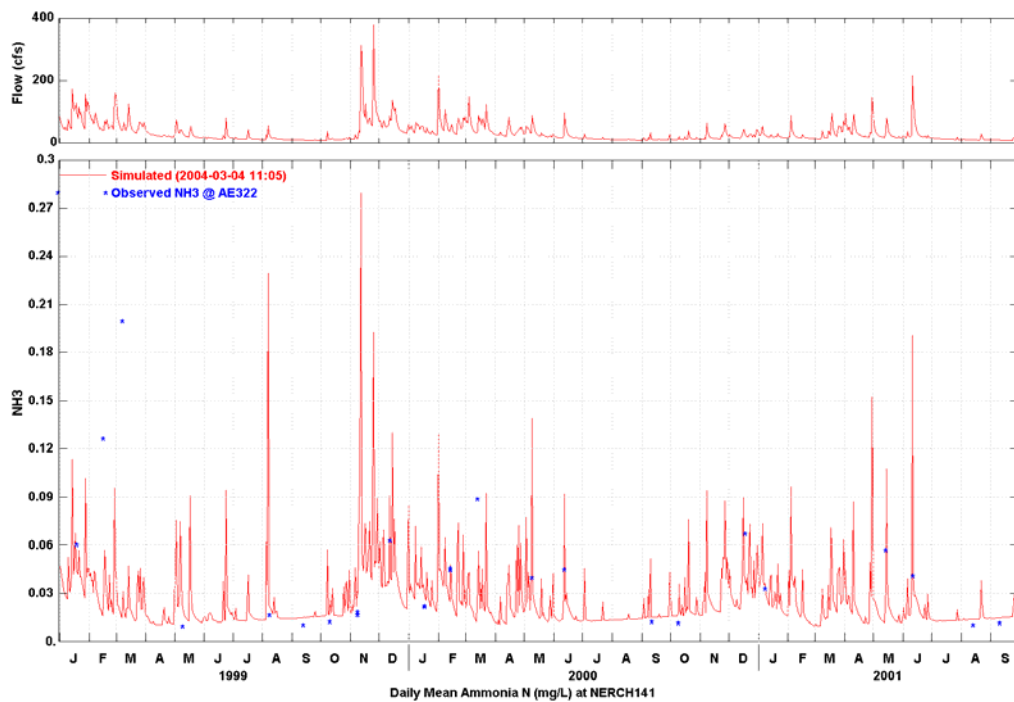


Figure B.4-2 Observed and Simulated Daily Ammonia Concentrations for Newaukum Creek at Station AE322

Water Quality Plots for Monitoring Stations Upstream of Outlet

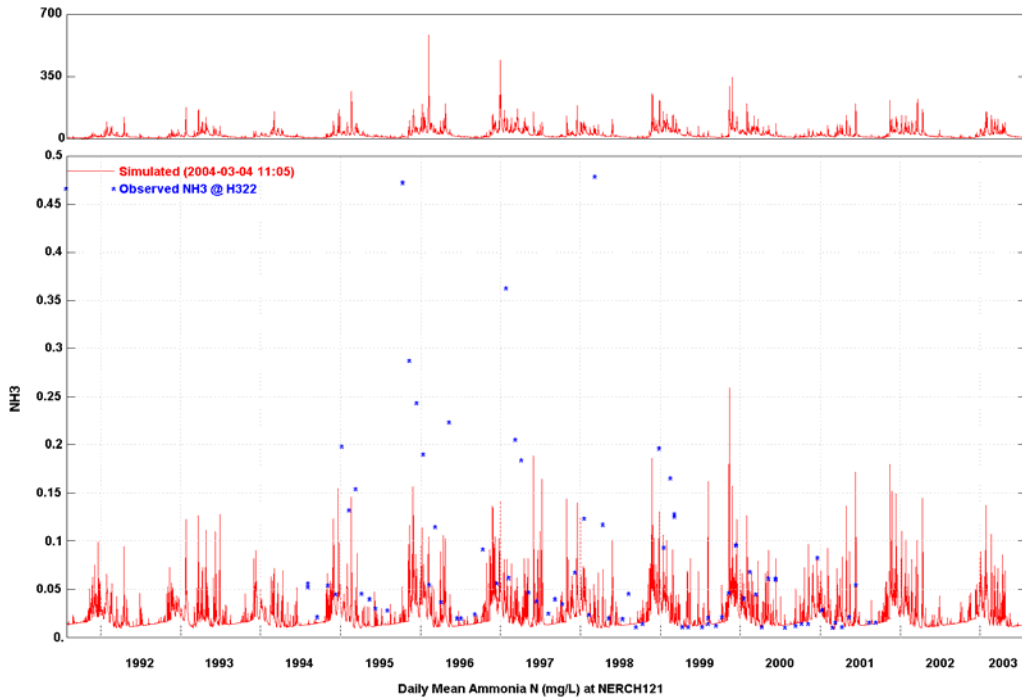


Figure B.4-3 Observed and Simulated Daily Ammonia Concentrations for Newaukum Creek at Station H322

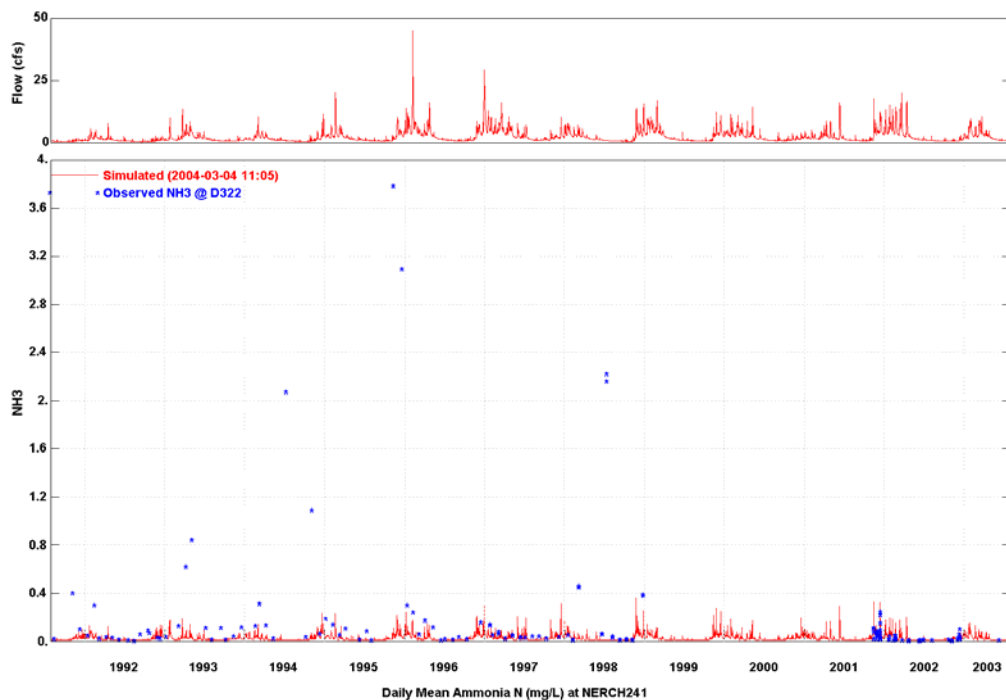


Figure B.4-4 Observed and Simulated Daily Ammonia Concentrations for Newaukum Creek at Station D322

Water Quality Plots for Monitoring Stations Upstream of Outlet

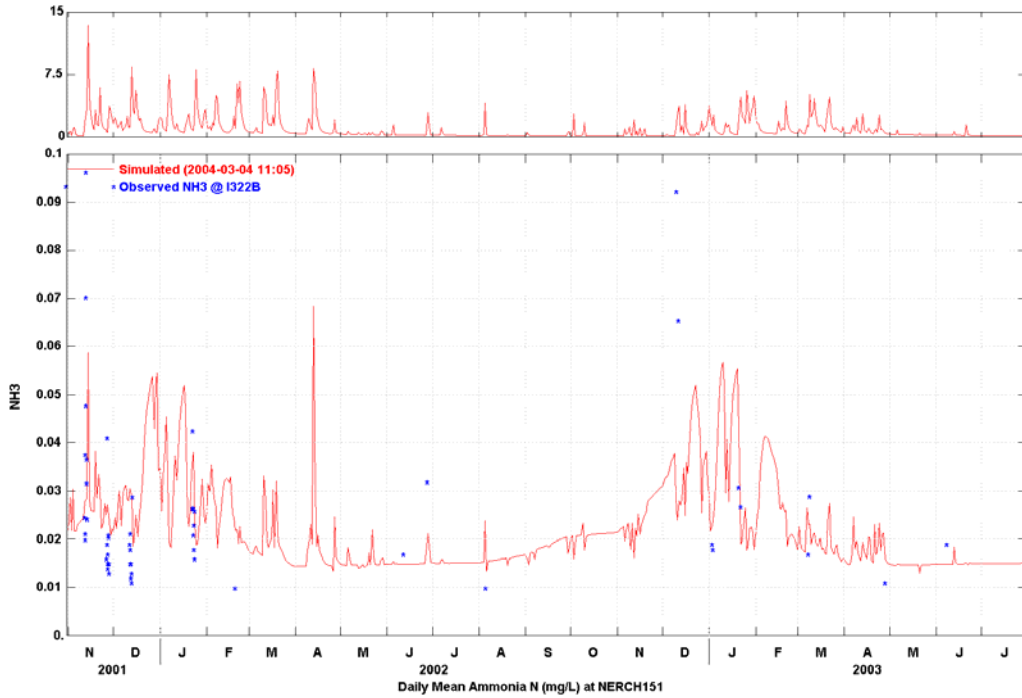


Figure B.4-5 Observed and Simulated Daily Ammonia Concentrations for Newaukum Creek at Station I322B

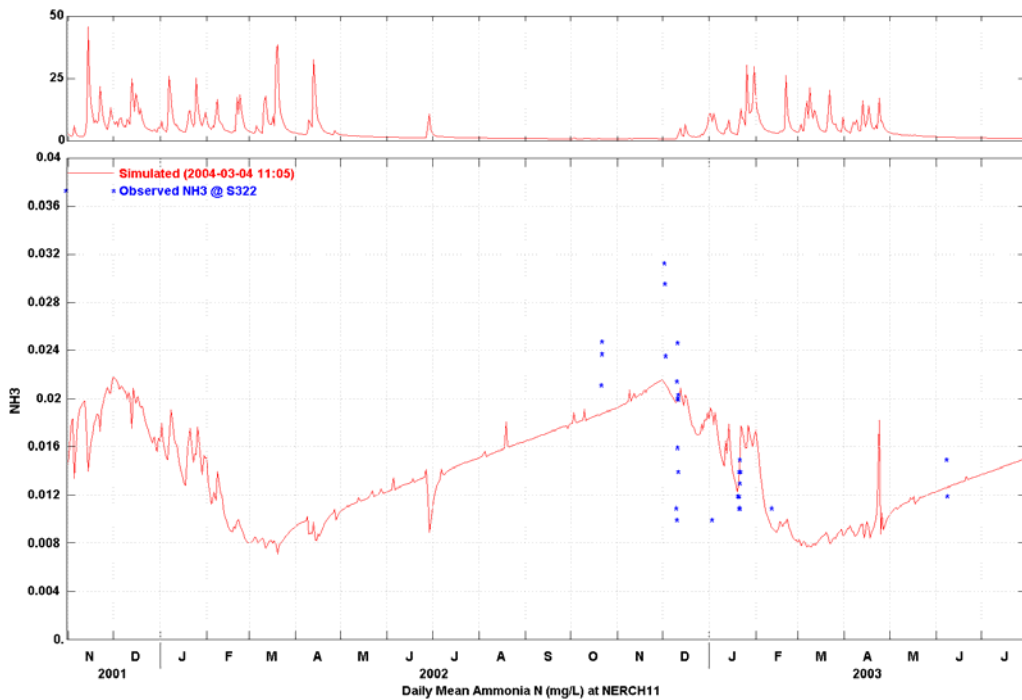


Figure B.4-6 Observed and Simulated Daily Ammonia Concentrations for Newaukum Creek at Station S322

Water Quality Plots for Monitoring Stations Upstream of Outlet

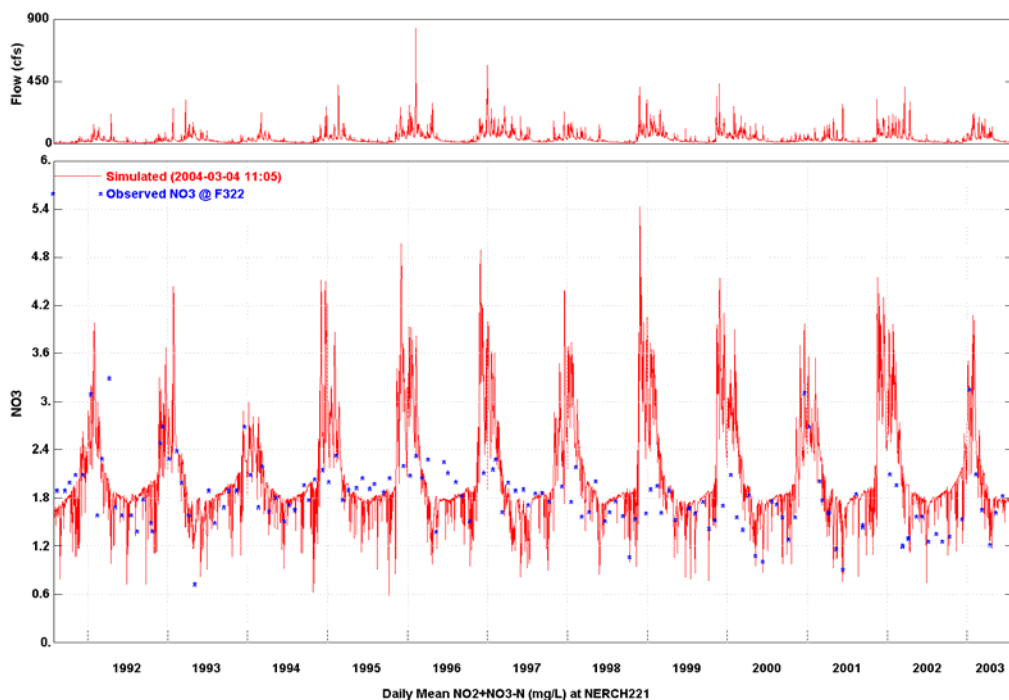


Figure B.5-1 Observed and Simulated Daily Nitrate-Nitrite Concentrations for Newaukum Creek at Station F322

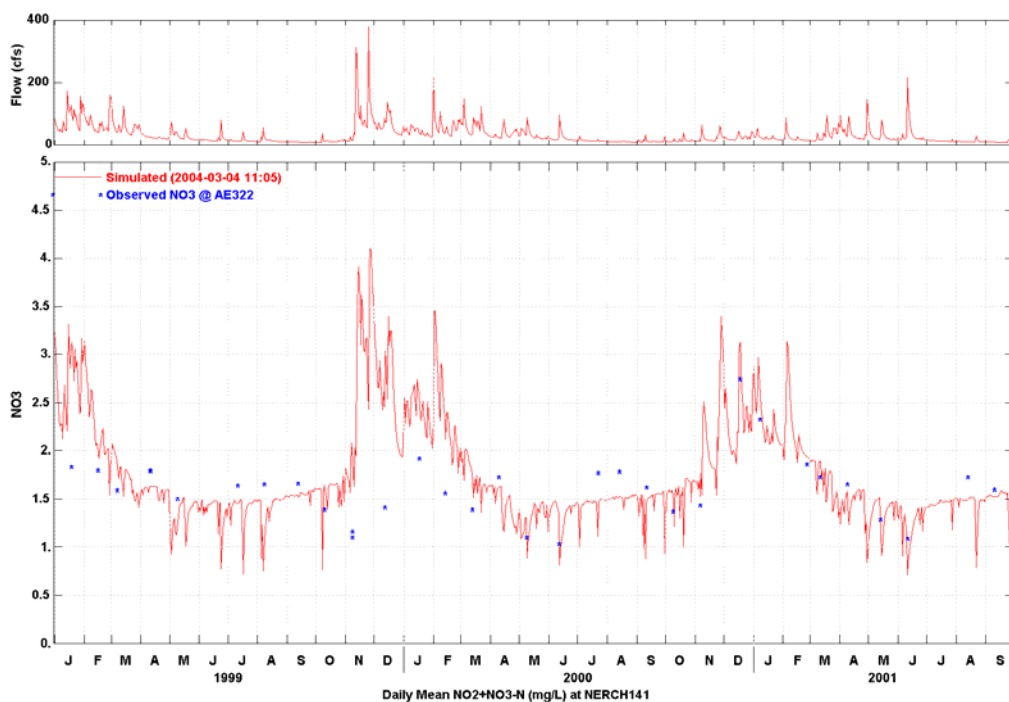


Figure B.5-2 Observed and Simulated Daily Nitrate-Nitrite Concentrations for Newaukum Creek at Station AE322

Water Quality Plots for Monitoring Stations Upstream of Outlet

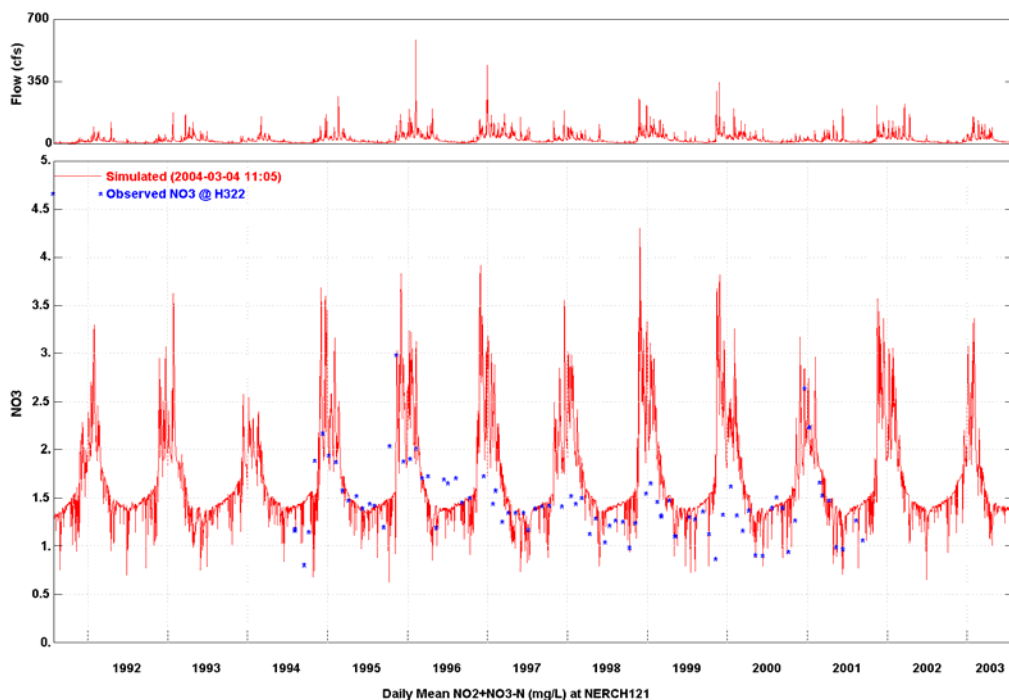


Figure B.5-3 Observed and Simulated Daily Nitrate-Nitrite Concentrations for Newaukum Creek at Station H322

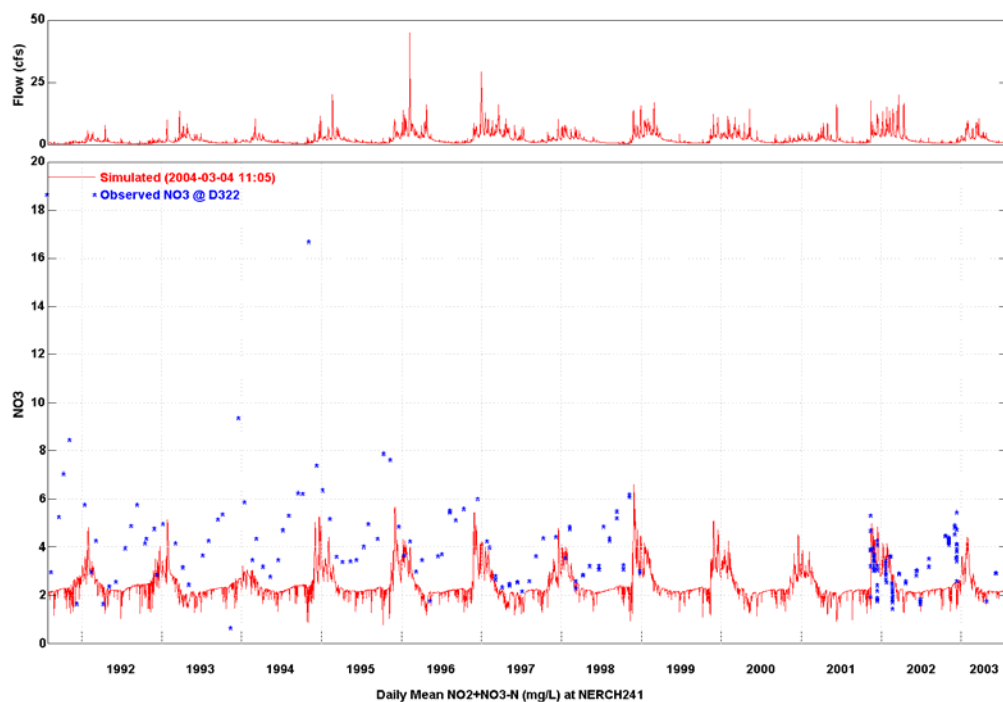


Figure B.5-4 Observed and Simulated Daily Nitrate-Nitrite Concentrations for Newaukum Creek at Station D322

Water Quality Plots for Monitoring Stations Upstream of Outlet

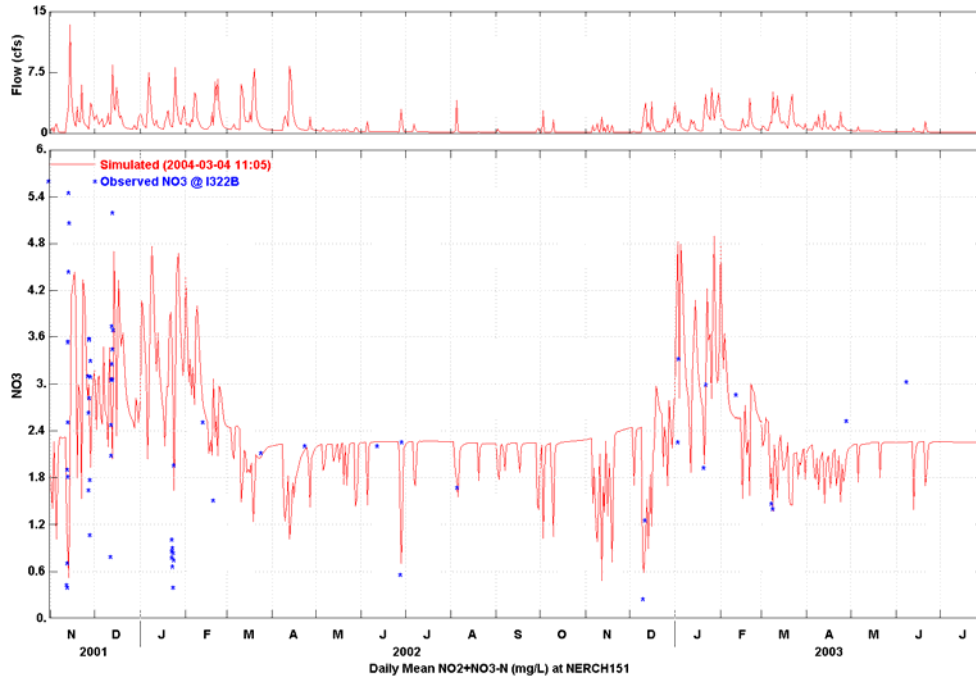


Figure B.5-5 Observed and Simulated Daily Nitrate-Nitrite Concentrations for Newaukum Creek at Station I322B

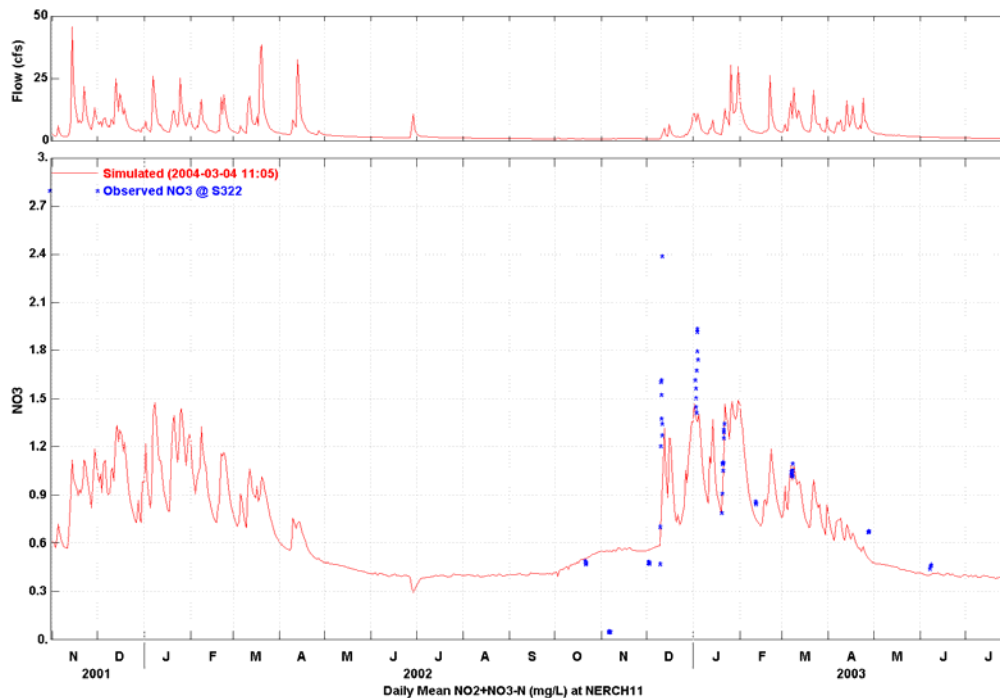


Figure B.5-6 Observed and Simulated Daily Nitrate-Nitrite Concentrations for Newaukum Creek at Station S322

Water Quality Plots for Monitoring Stations Upstream of Outlet

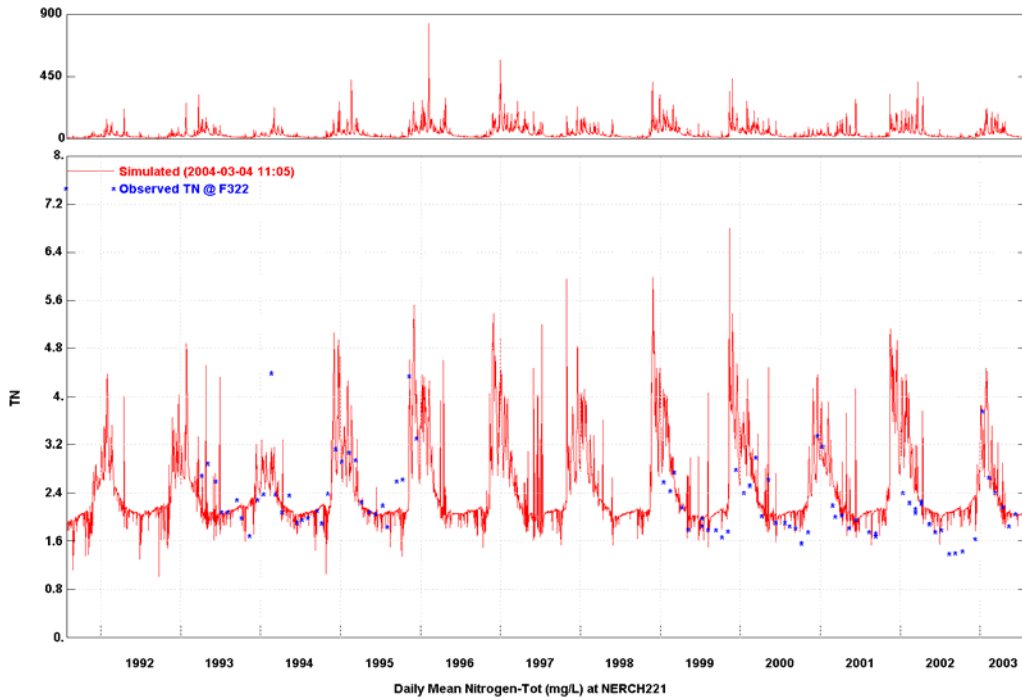


Figure B.6-1 Observed and Simulated Daily Total Nitrogen Concentrations for Newaukum Creek at Station F322

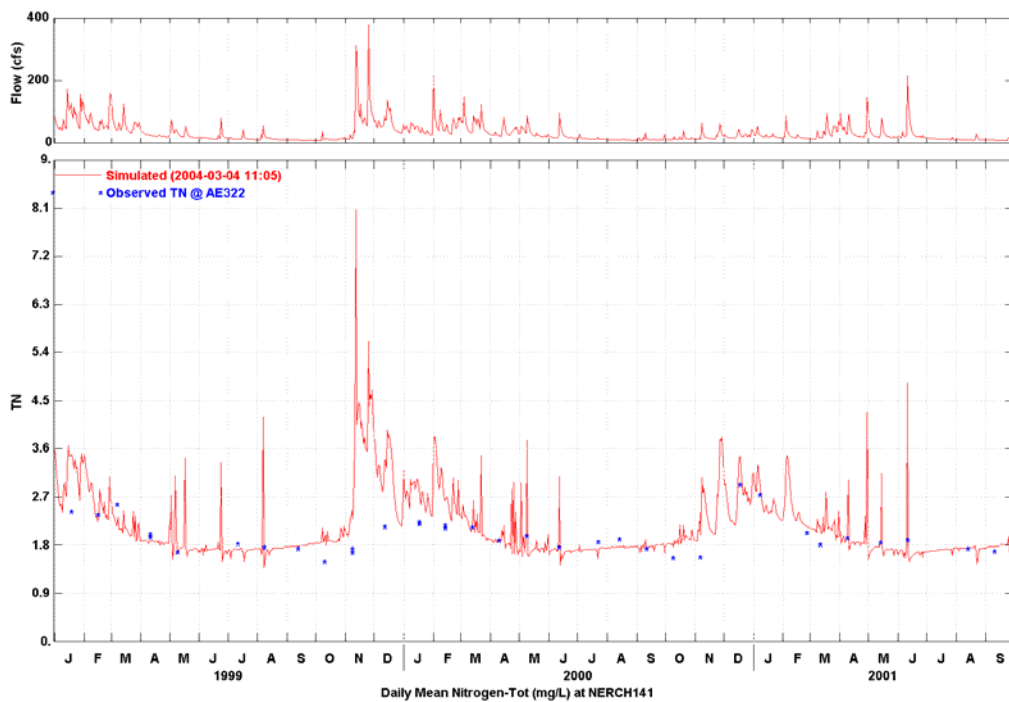


Figure B.6-2 Observed and Simulated Daily Total Nitrogen Concentrations for Newaukum Creek at Station AE322

Water Quality Plots for Monitoring Stations Upstream of Outlet

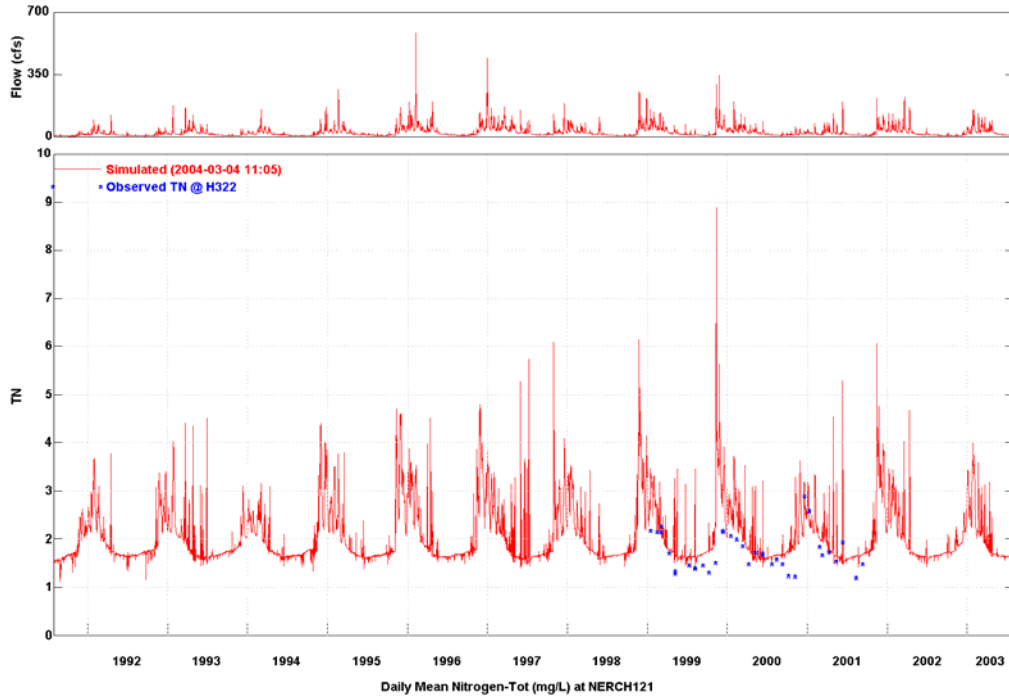


Figure B.6-3 Observed and Simulated Daily Total Nitrogen Concentrations for Newaukum Creek at Station H322

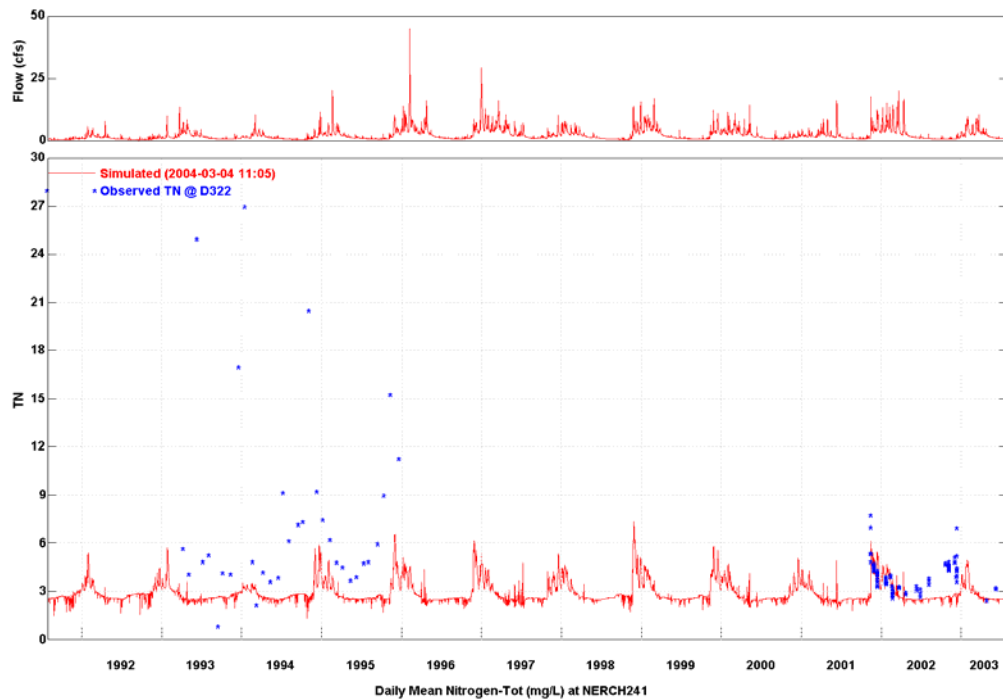


Figure B.6-4 Observed and Simulated Daily Total Nitrogen Concentrations for Newaukum Creek at Station D322

Water Quality Plots for Monitoring Stations Upstream of Outlet

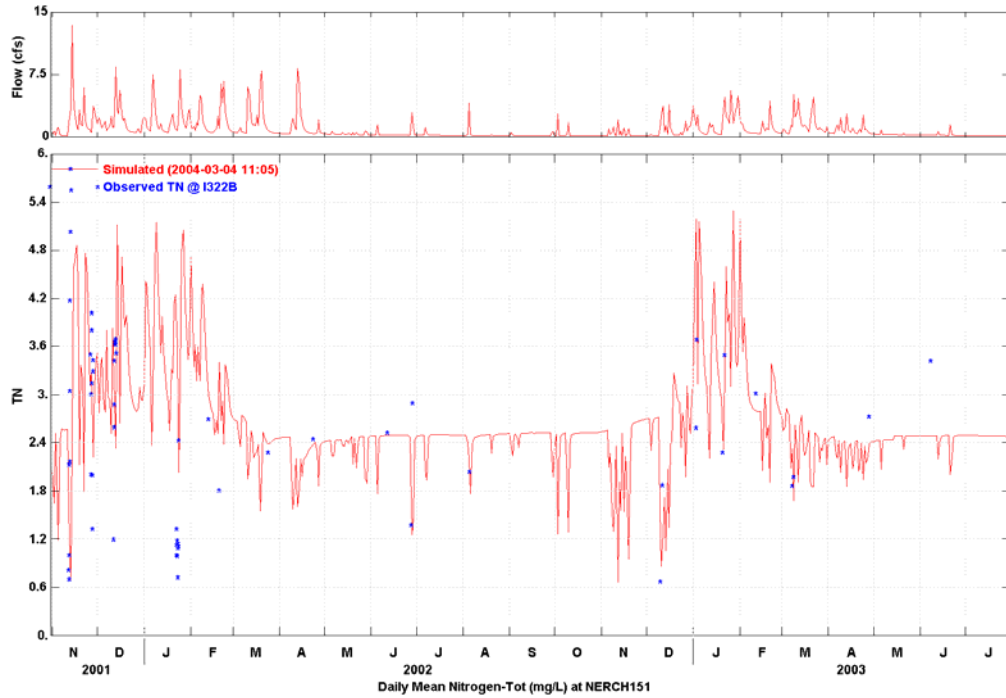


Figure B.6-5 Observed and Simulated Daily Total Nitrogen Concentrations for Newaukum Creek at Station I322B

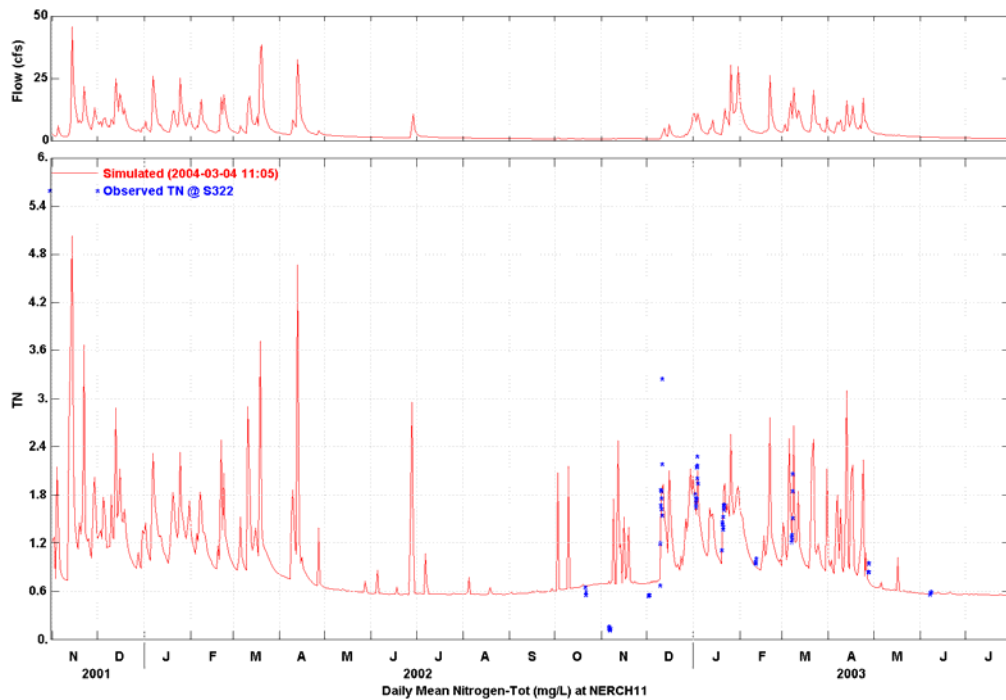


Figure B.6-6 Observed and Simulated Daily Total Nitrogen Concentrations for Newaukum Creek at Station S322

Water Quality Plots for Monitoring Stations Upstream of Outlet

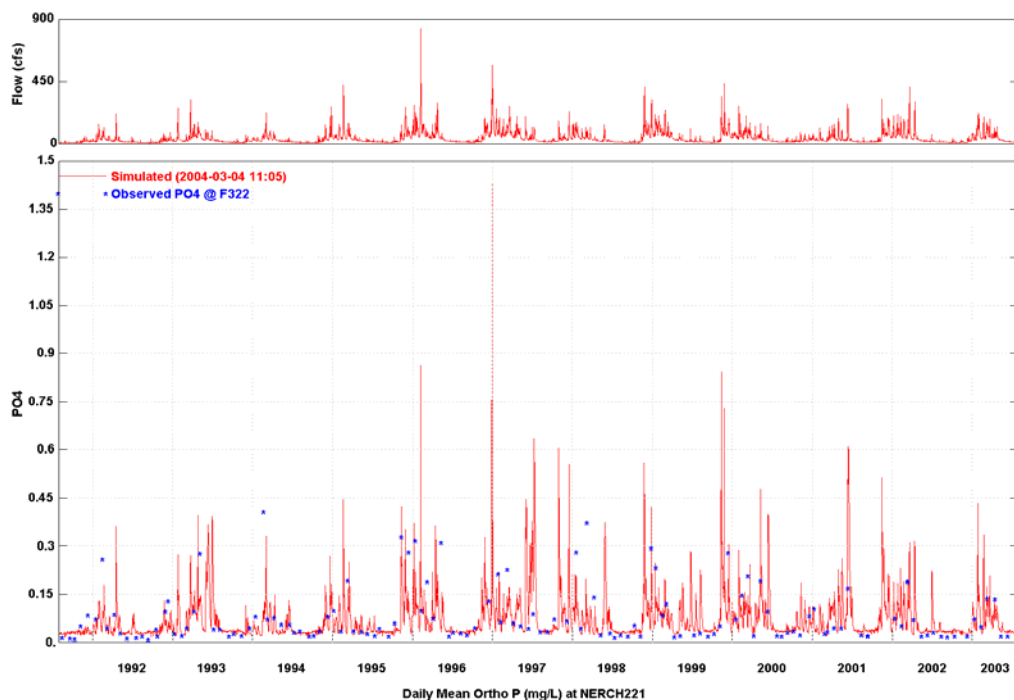


Figure B.7-1 Observed and Simulated Daily Orthophosphate Concentrations for Newaukum Creek at Station F322

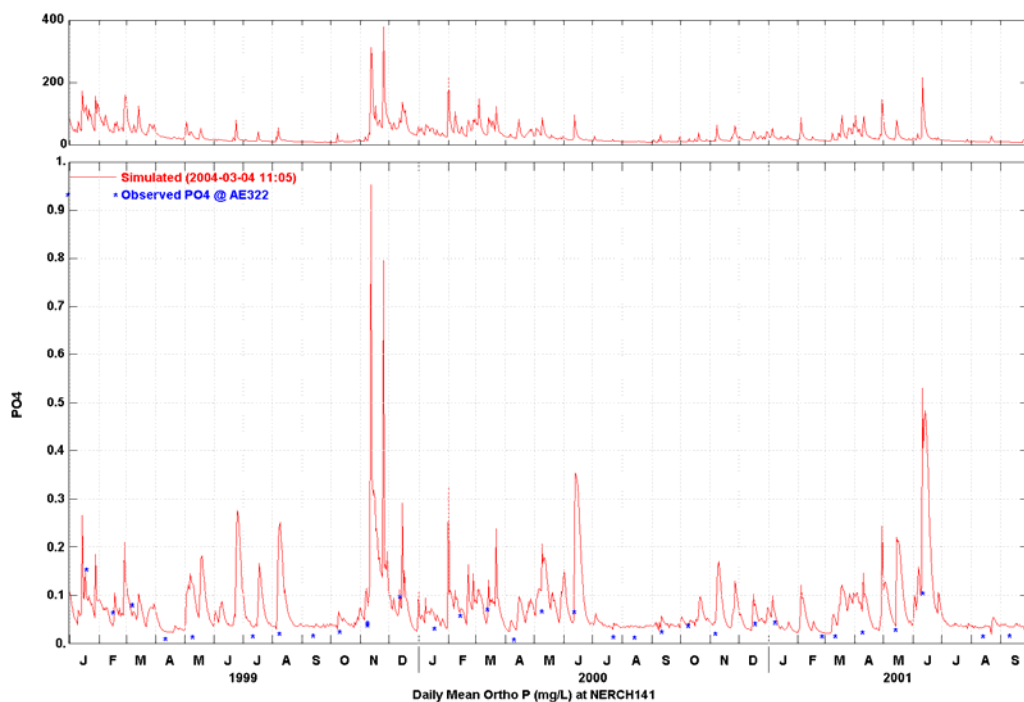


Figure B.7-2 Observed and Simulated Daily Orthophosphate Concentrations for Newaukum Creek at Station AE322

Water Quality Plots for Monitoring Stations Upstream of Outlet

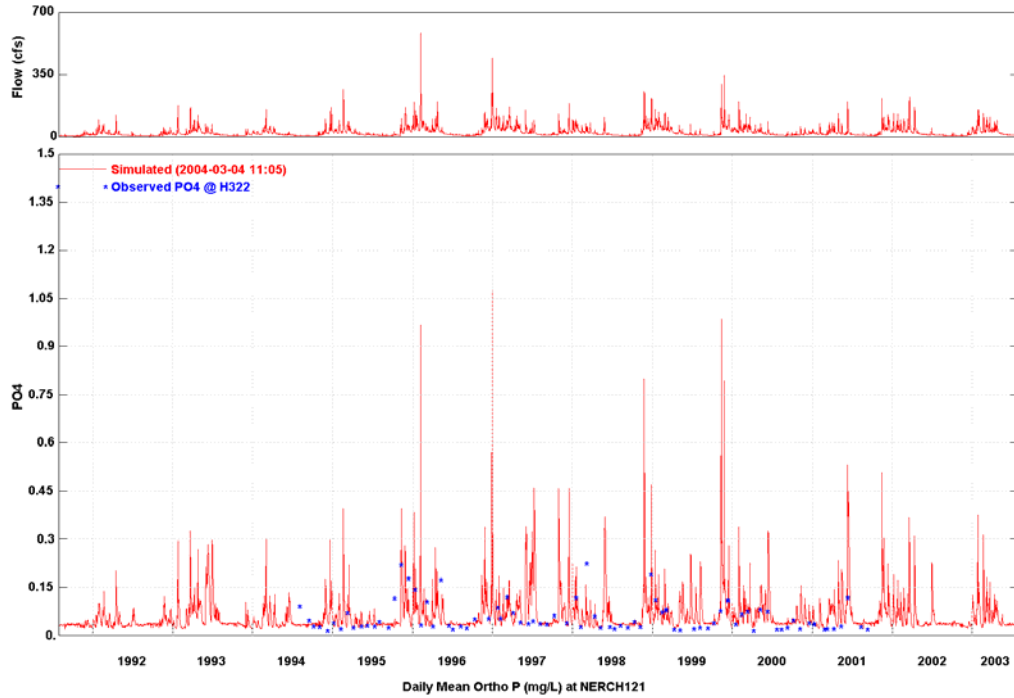


Figure B.7-3 Observed and Simulated Daily Orthophosphate Concentrations for Newaukum Creek at Station H322

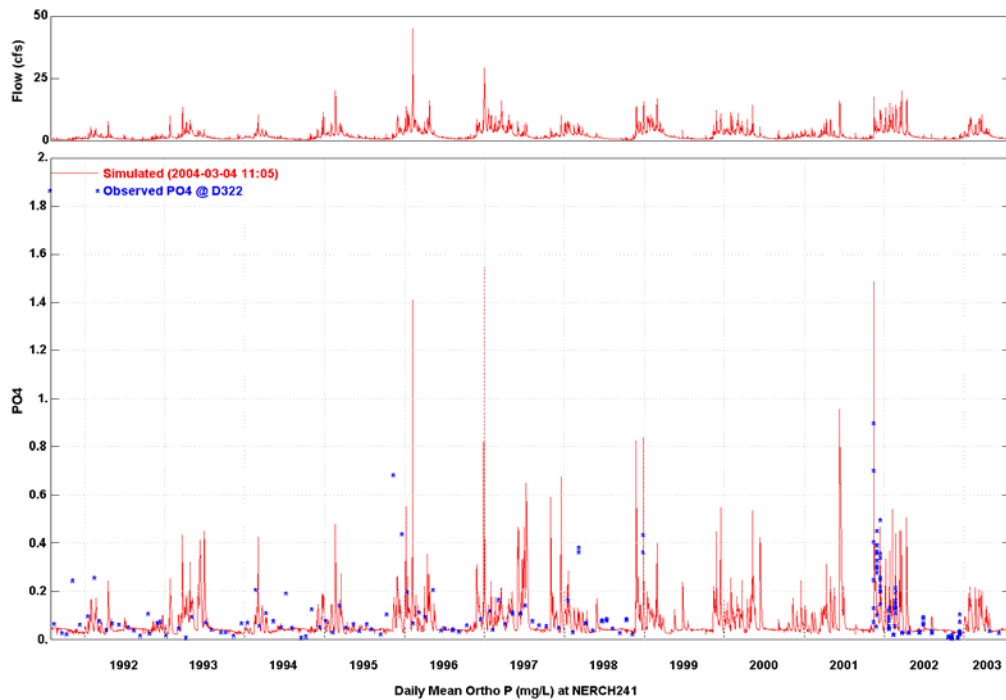


Figure B.7-4 Observed and Simulated Daily Orthophosphate Concentrations for Newaukum Creek at Station D322

Water Quality Plots for Monitoring Stations Upstream of Outlet

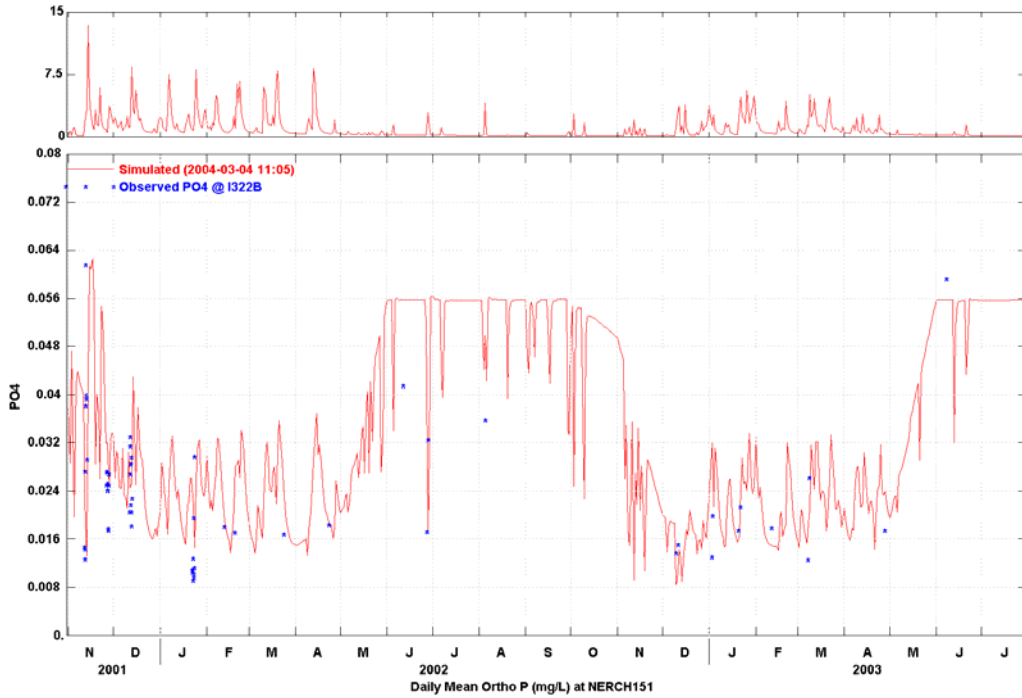


Figure B.7-5 Observed and Simulated Daily Orthophosphate Concentrations for Newaukum Creek at Station I322B

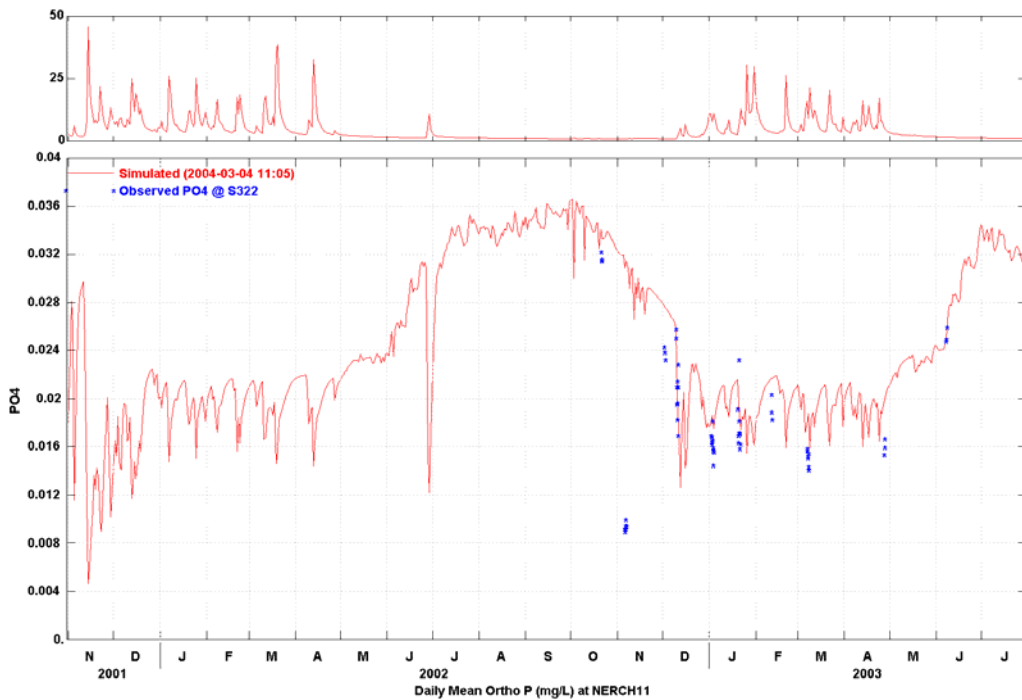


Figure B.7-6 Observed and Simulated Daily Orthophosphate Concentrations for Newaukum Creek at Station S322

Water Quality Plots for Monitoring Stations Upstream of Outlet

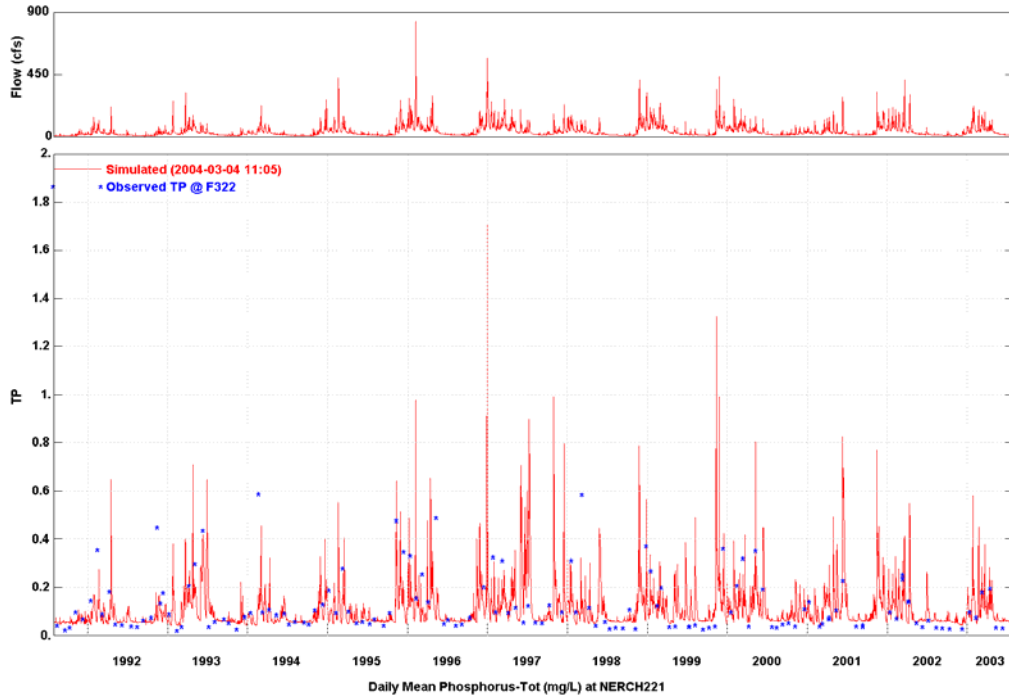


Figure B.8-1 Observed and Simulated Daily Total Phosphorus Concentrations for Newaukum Creek at Station F322

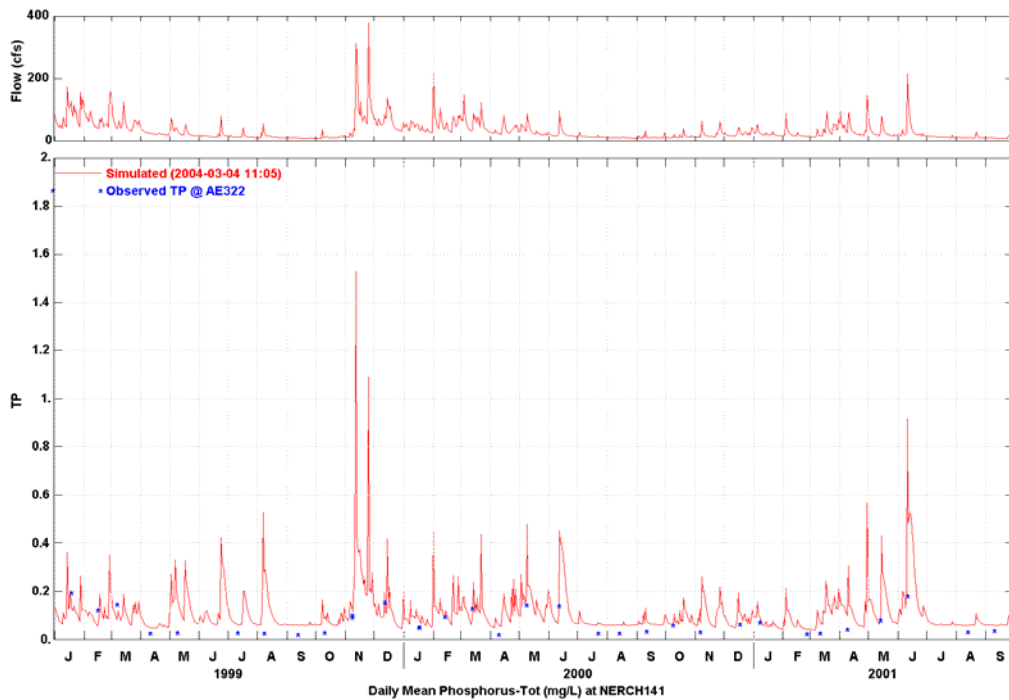


Figure B.8-2 Observed and Simulated Daily Total Phosphorus Concentrations for Newaukum Creek at Station AE322

Water Quality Plots for Monitoring Stations Upstream of Outlet

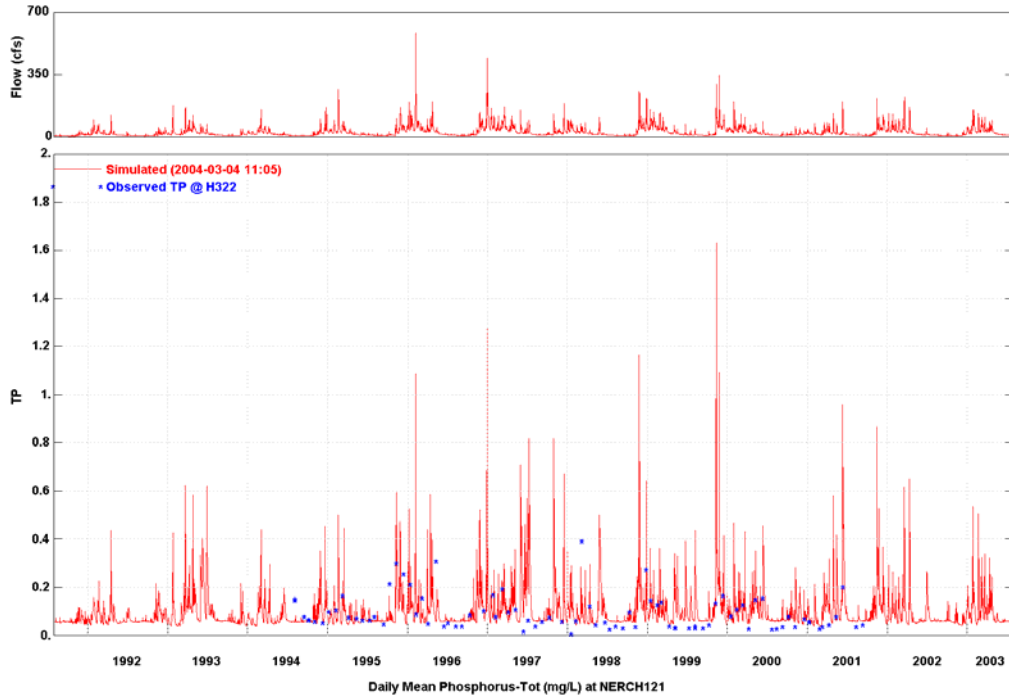


Figure B.8-3 Observed and Simulated Daily Total Phosphorus Concentrations for Newaukum Creek at Station H322

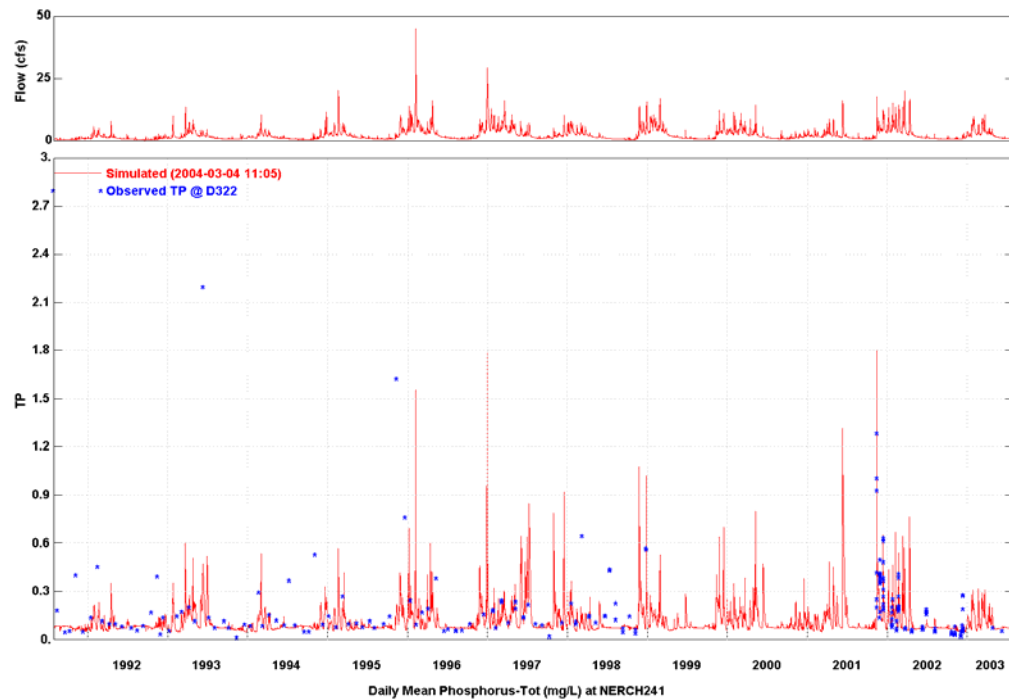


Figure B.8-4 Observed and Simulated Daily Total Phosphorus Concentrations for Newaukum Creek at Station D322

Water Quality Plots for Monitoring Stations Upstream of Outlet

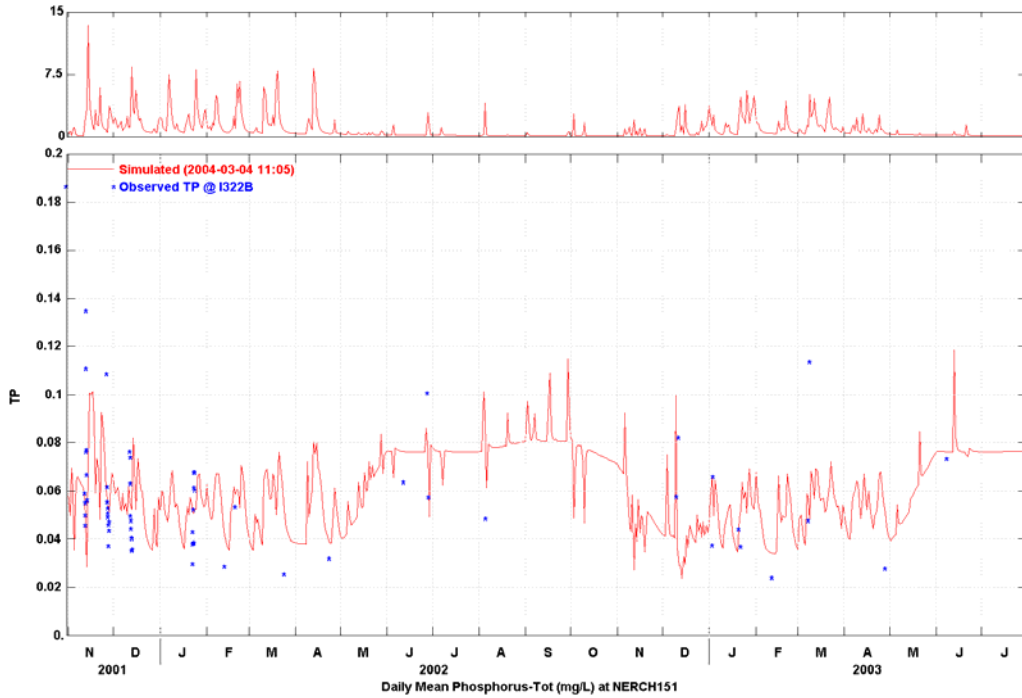


Figure B.8-5 Observed and Simulated Daily Total Phosphorus Concentrations for Newaukum Creek at Station I322B

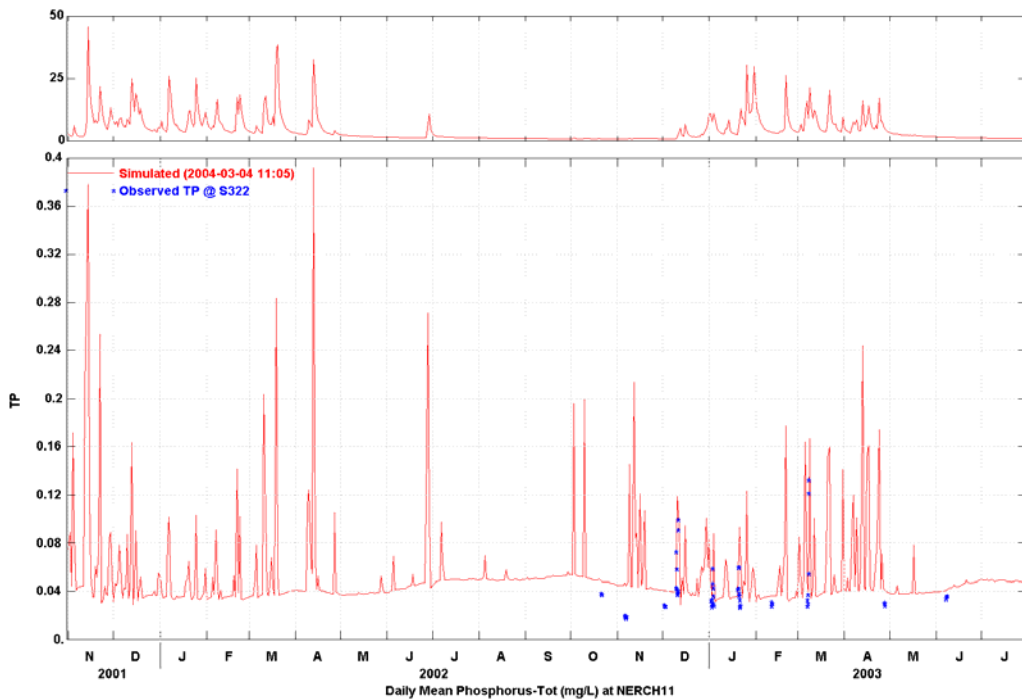


Figure B.8-6 Observed and Simulated Daily Total Phosphorus Concentrations for Newaukum Creek at Station S322

Water Quality Plots for Monitoring Stations Upstream of Outlet

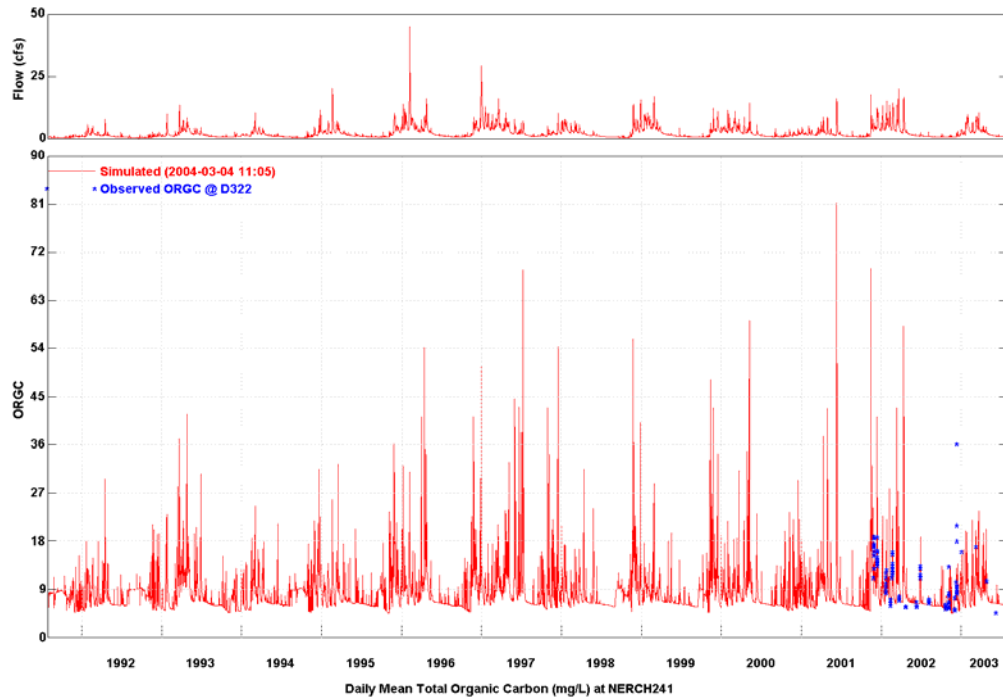


Figure B.9-1 Observed and Simulated Daily Total Organic Carbon Concentrations for Newaukum Creek at Station D322

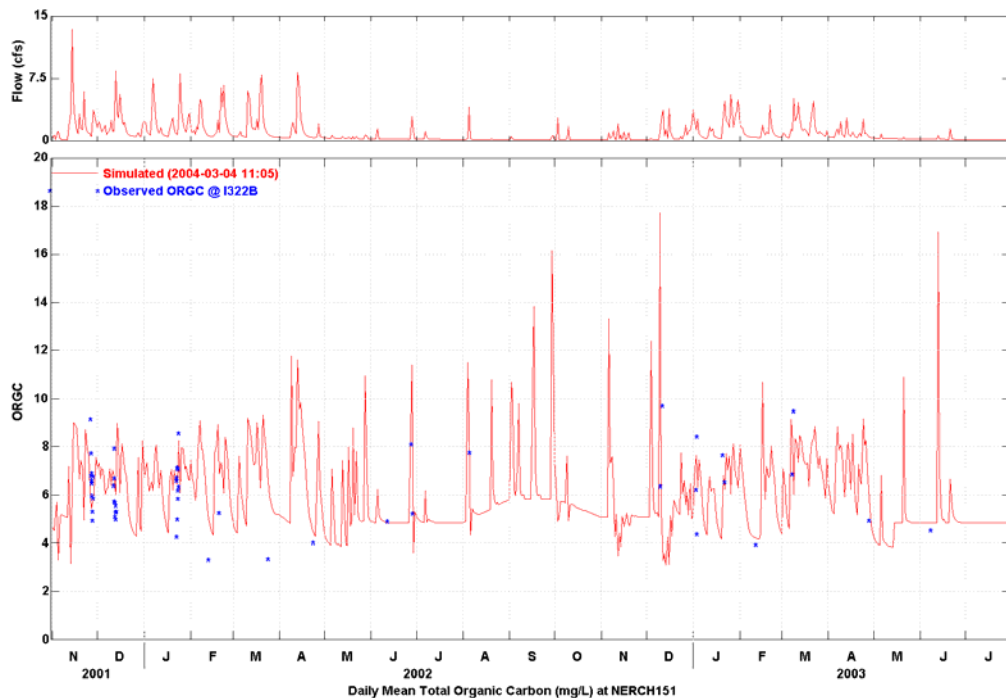


Figure B.9-2 Observed and Simulated Daily Total Organic Carbon Concentrations for Newaukum Creek at Station I322B

Water Quality Plots for Monitoring Stations Upstream of Outlet

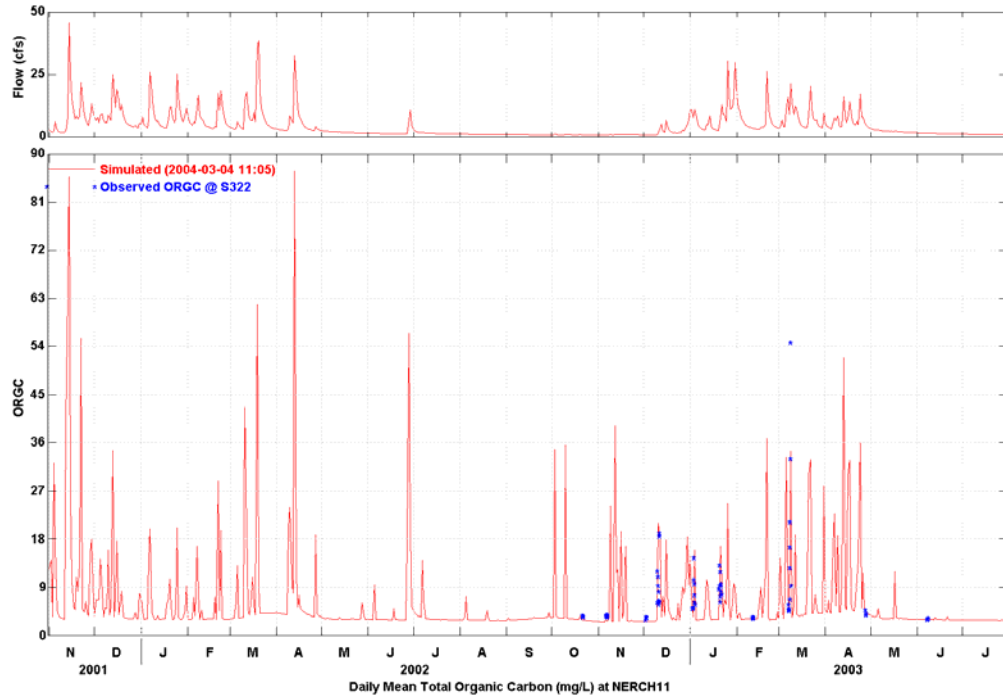


Figure B.9-3 Observed and Simulated Daily Total Organic Carbon Concentrations for Newaukum Creek at Station S322

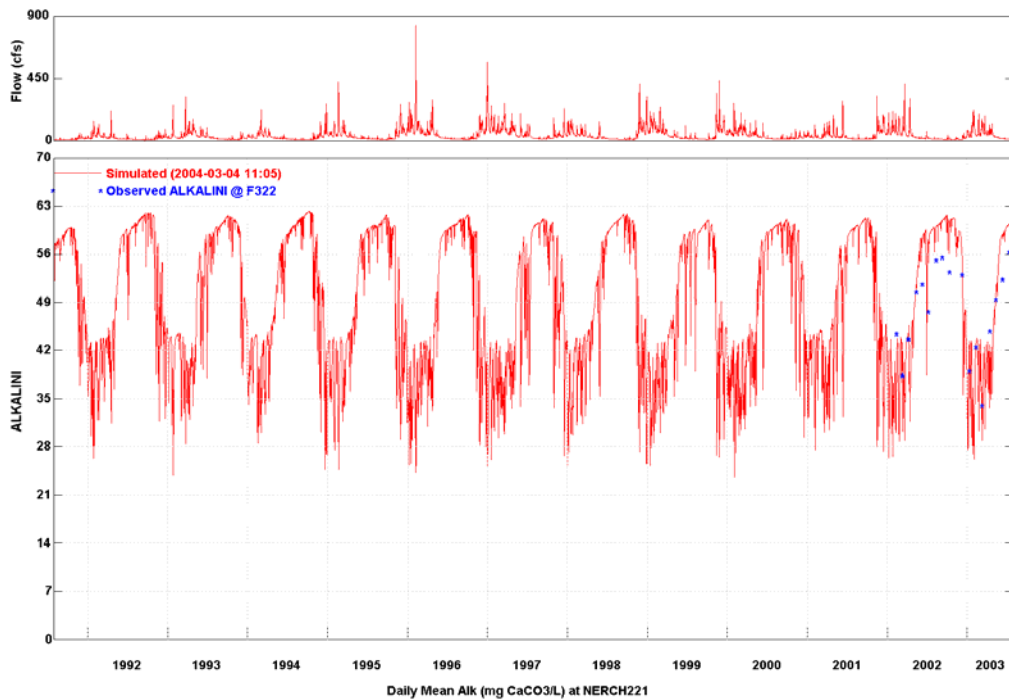


Figure B.10-1 Observed and Simulated Daily Alkalinity Concentrations for Newaukum Creek at Station F322

Water Quality Plots for Monitoring Stations Upstream of Outlet

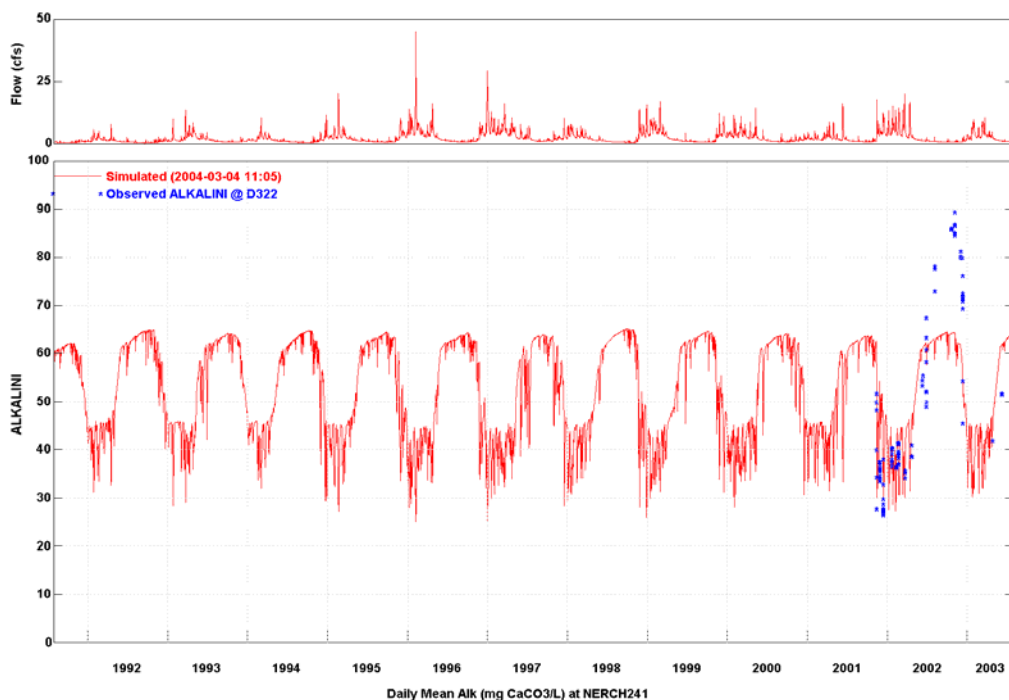


Figure B.10-2 Observed and Simulated Daily Alkalinity Concentrations for Newaukum Creek at Station D322

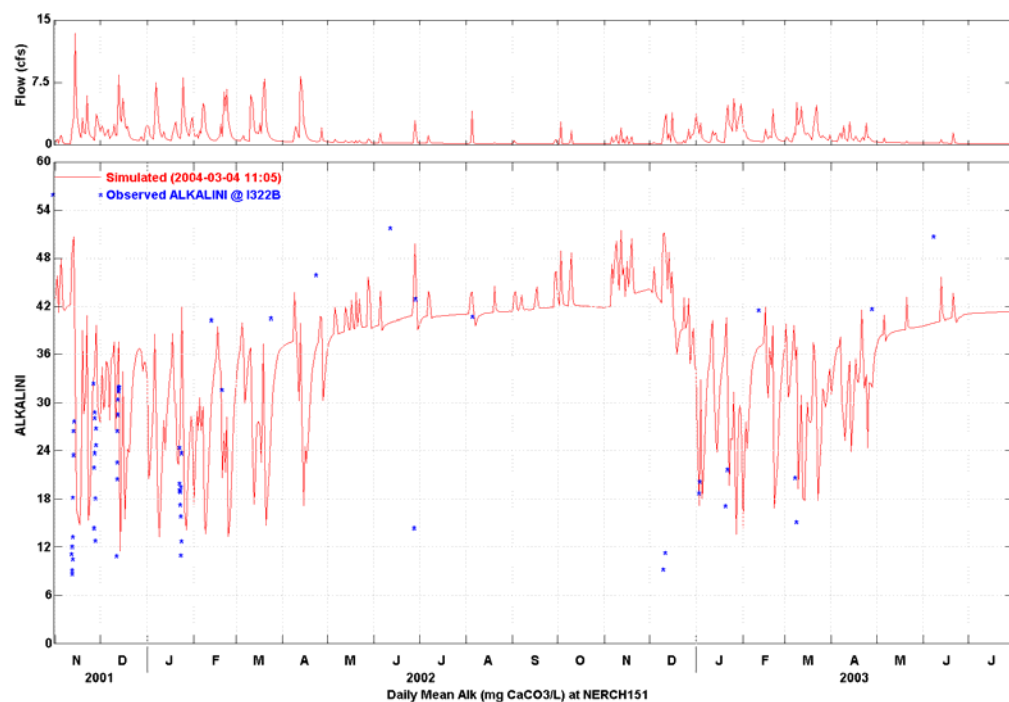


Figure B.10-3 Observed and Simulated Daily Alkalinity Concentrations for Newaukum Creek at Station I322B

Water Quality Plots for Monitoring Stations Upstream of Outlet

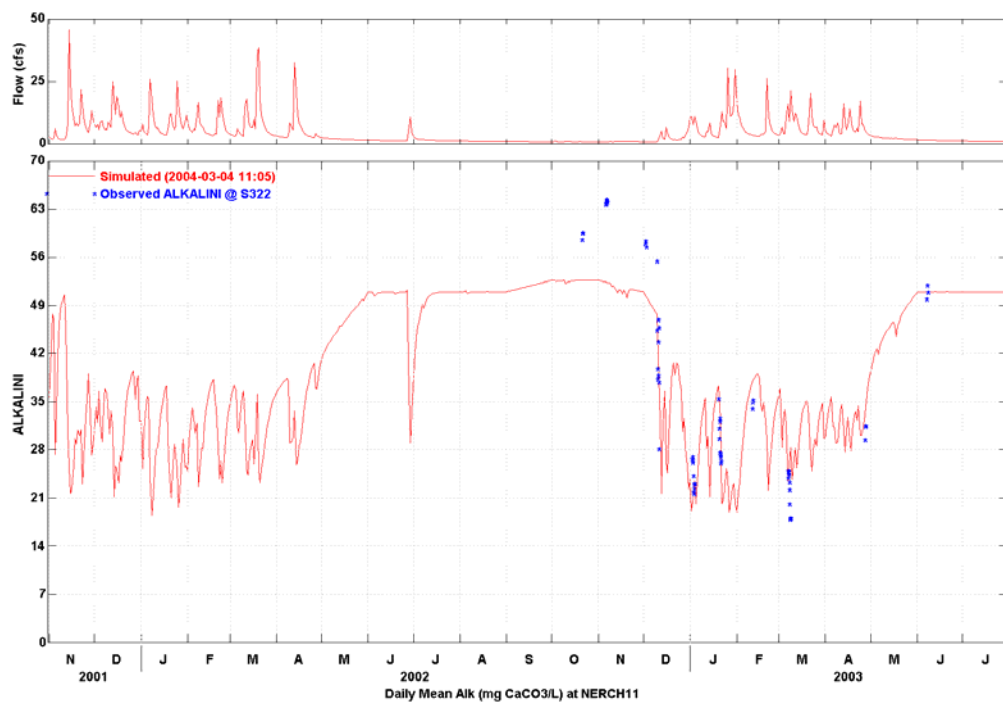


Figure B.10-4 Observed and Simulated Daily Alkalinity Concentrations for Newaukum Creek at Station S322

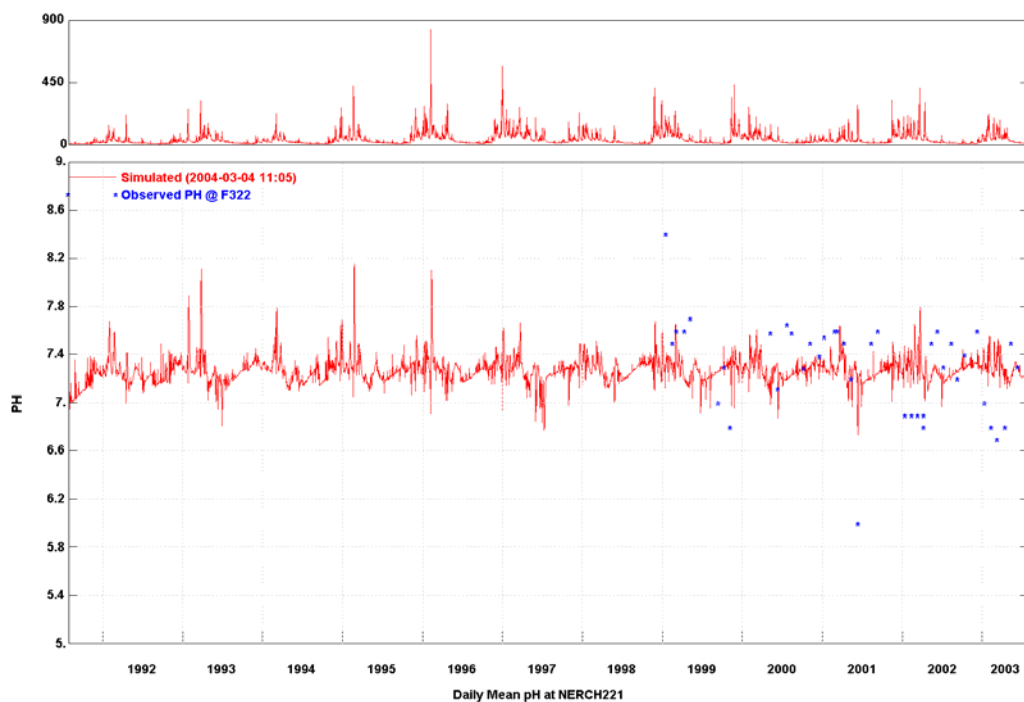


Figure B.11-1 Observed and Simulated Daily pH for Newaukum Creek at Station F322

Water Quality Plots for Monitoring Stations Upstream of Outlet

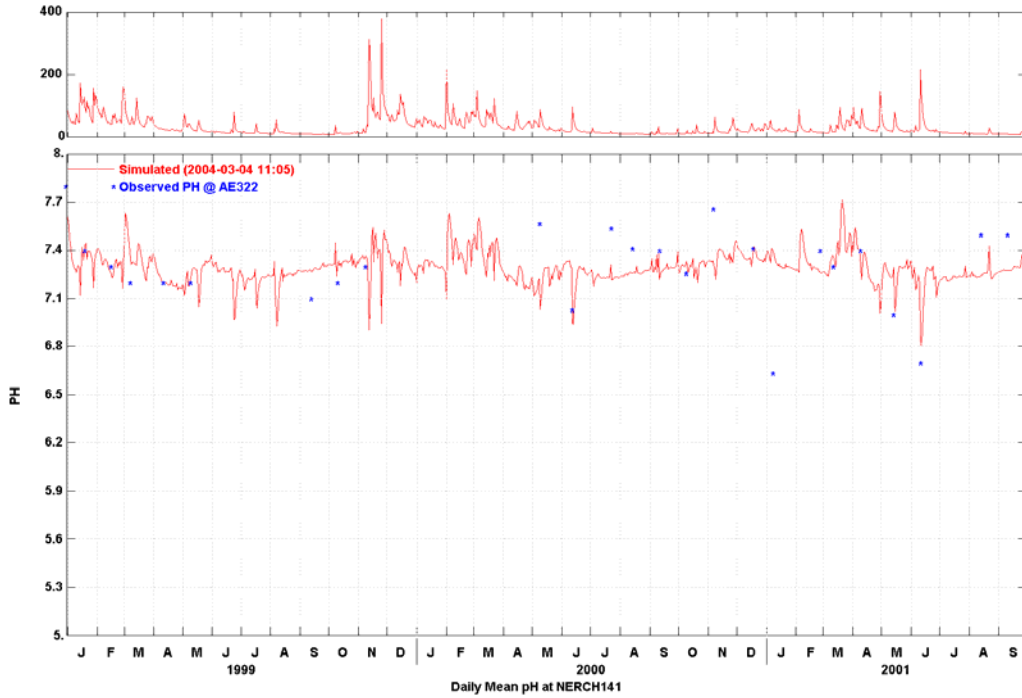


Figure B.11-2 Observed and Simulated Daily pH for Newaukum Creek at Station AE322

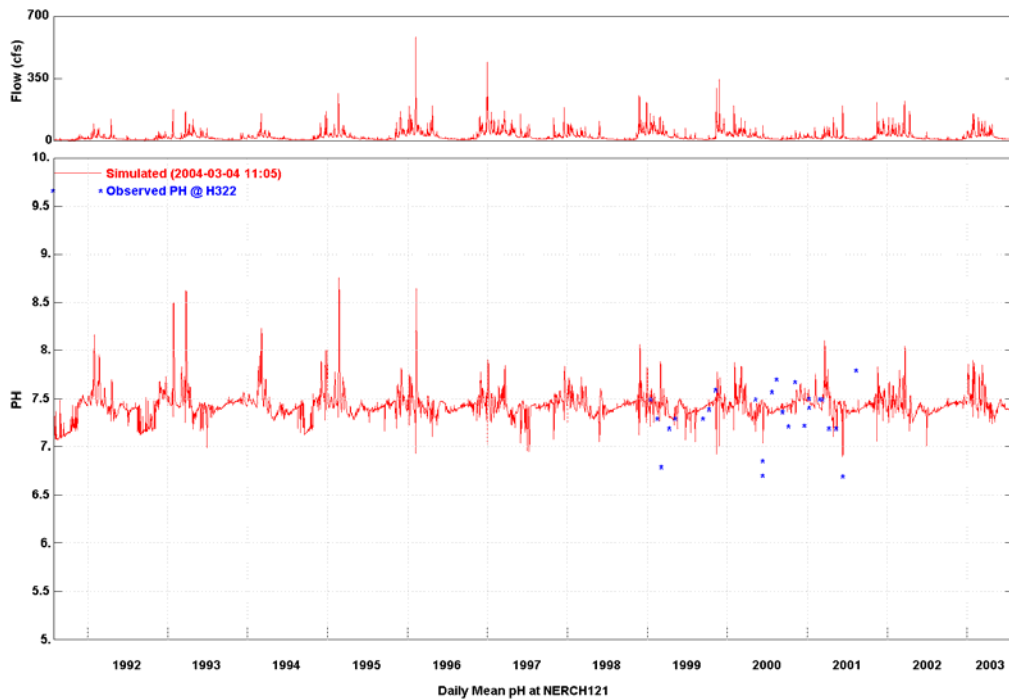


Figure B.11-3 Observed and Simulated Daily pH for Newaukum Creek at Station H322

Water Quality Plots for Monitoring Stations Upstream of Outlet

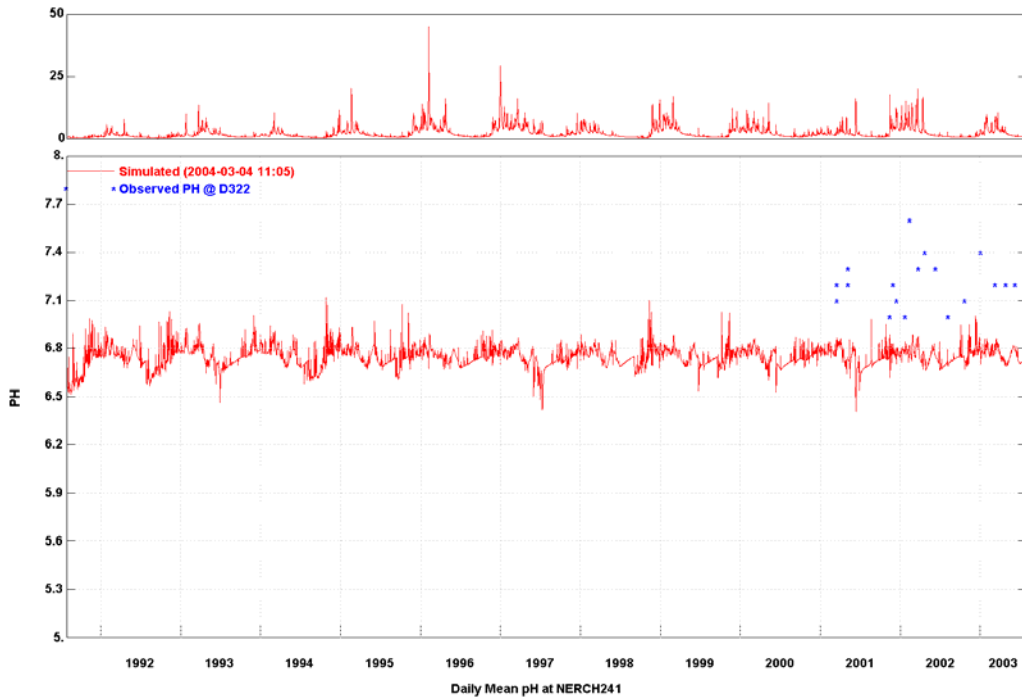


Figure B.11-4 Observed and Simulated Daily pH for Newaukum Creek at Station D322

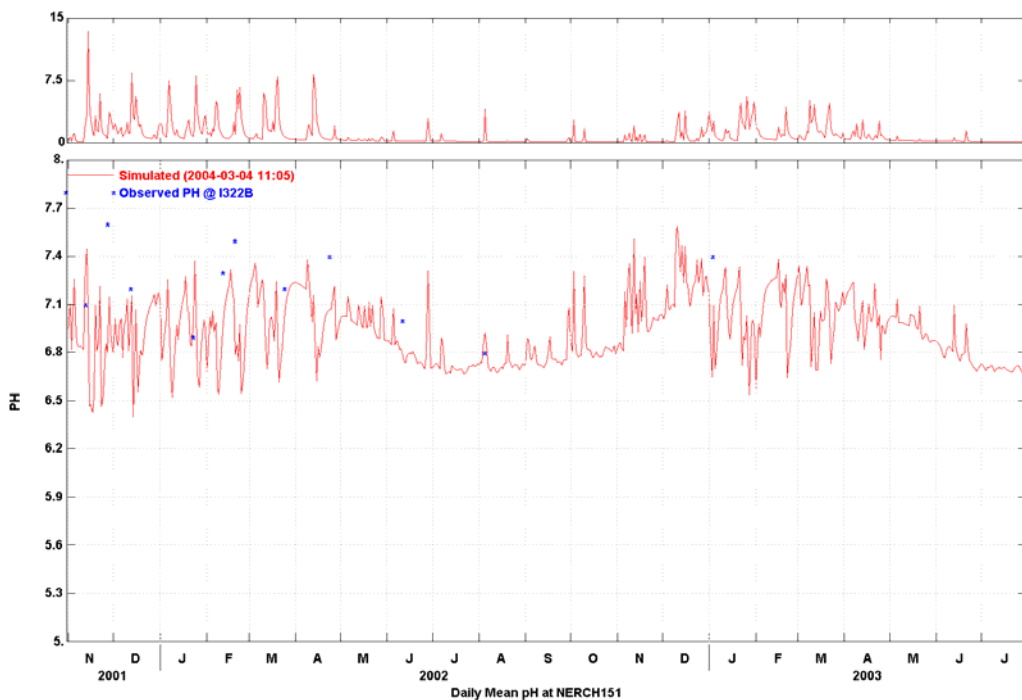


Figure B.11-5 Observed and Simulated Daily pH for Newaukum Creek at Station I322B

Water Quality Plots for Monitoring Stations Upstream of Outlet

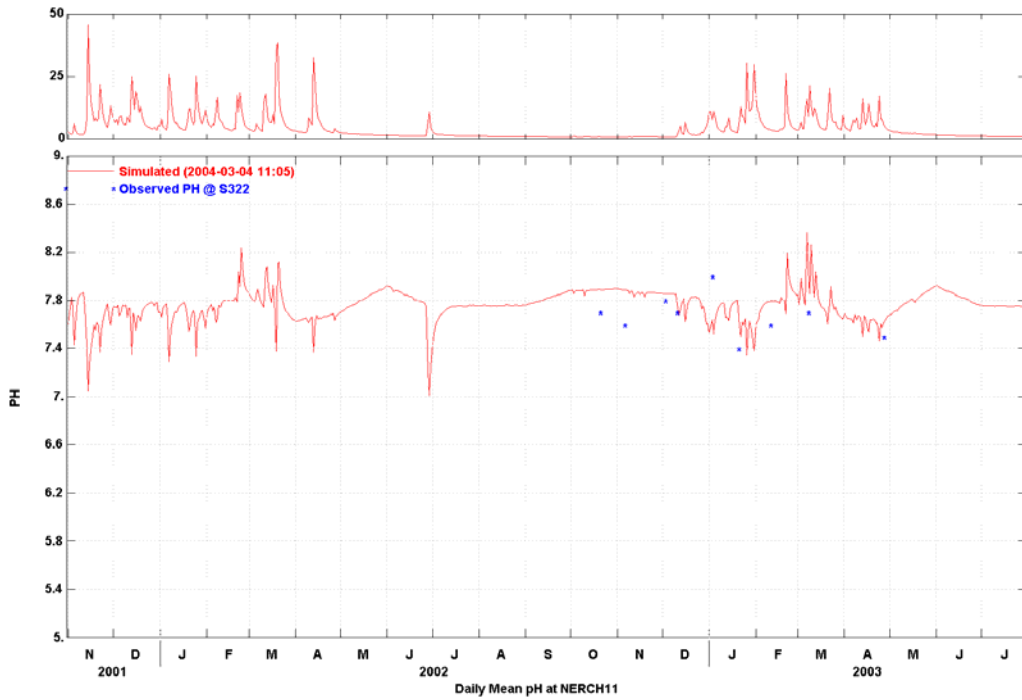


Figure B.11-6 Observed and Simulated Daily pH for Newaukum Creek at Station S322

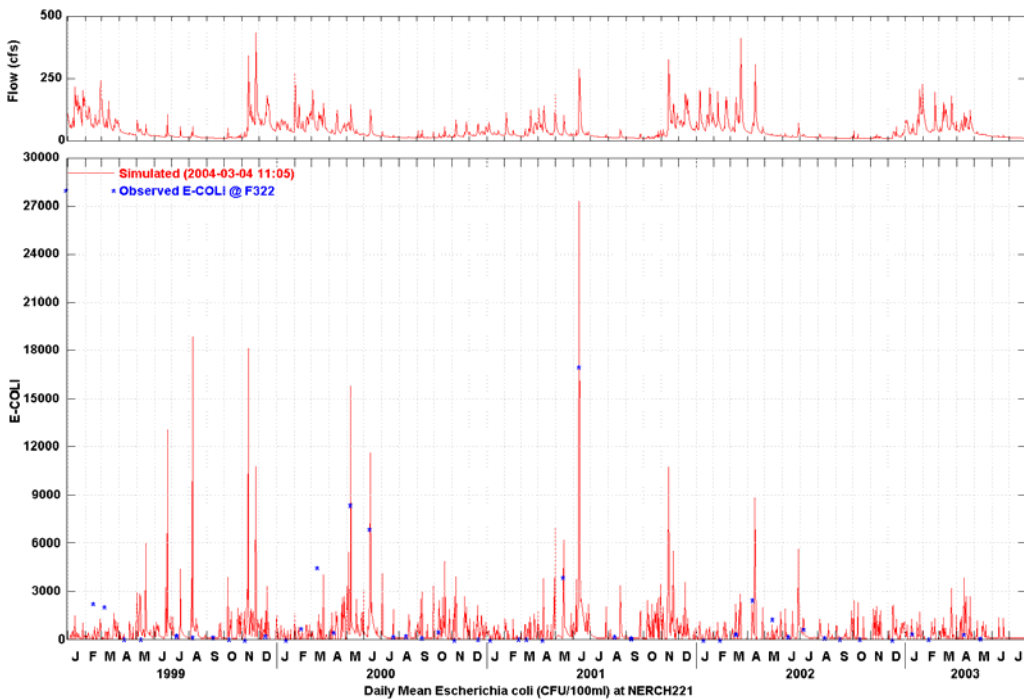


Figure B.12-1 Observed and Simulated Daily EColi Concentrations for Newaukum Creek at Station F322

Water Quality Plots for Monitoring Stations Upstream of Outlet

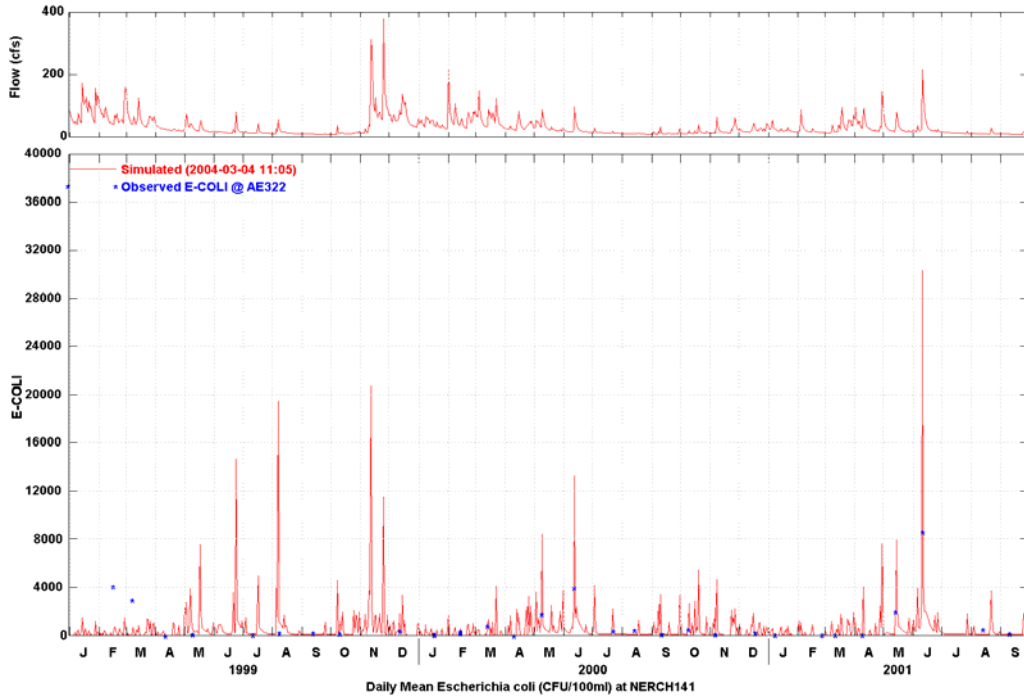


Figure B.12-2 Observed and Simulated Daily EColi Concentrations for Newaukum Creek at Station AE322

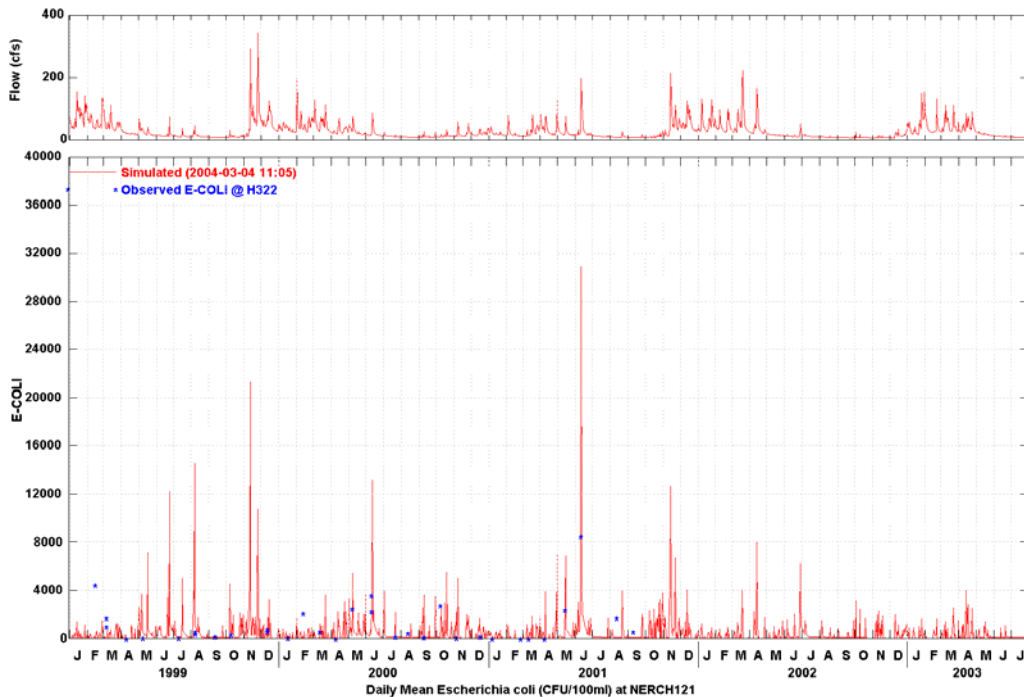


Figure B.12-3 Observed and Simulated Daily EColi Concentrations for Newaukum Creek at Station H322

Water Quality Plots for Monitoring Stations Upstream of Outlet

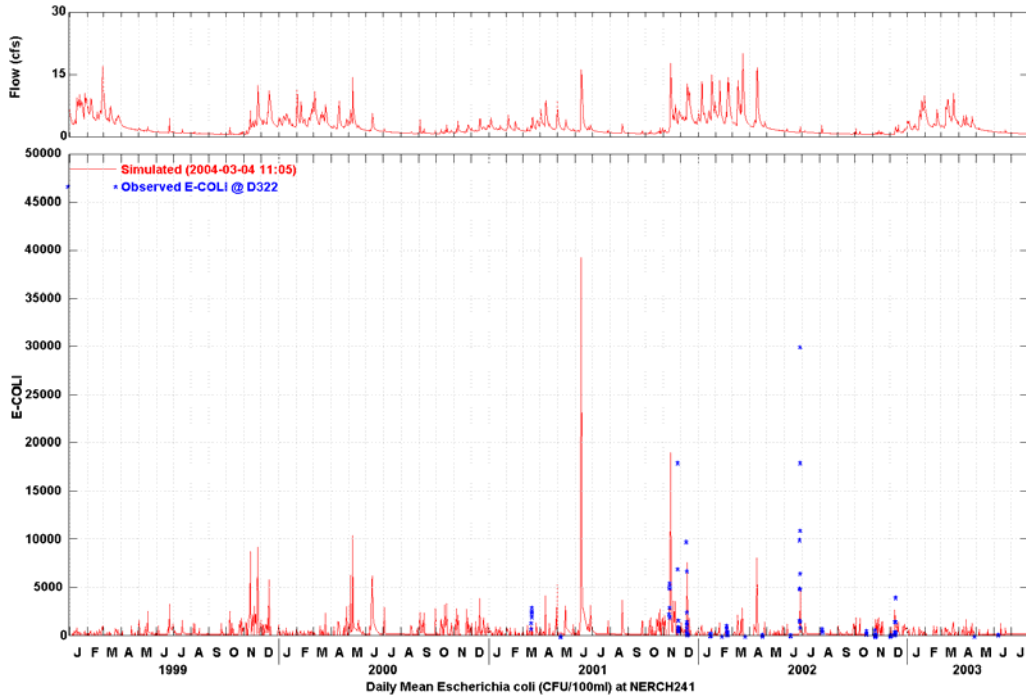


Figure B.12-4 Observed and Simulated Daily EColi Concentrations for Newaukum Creek at Station D322

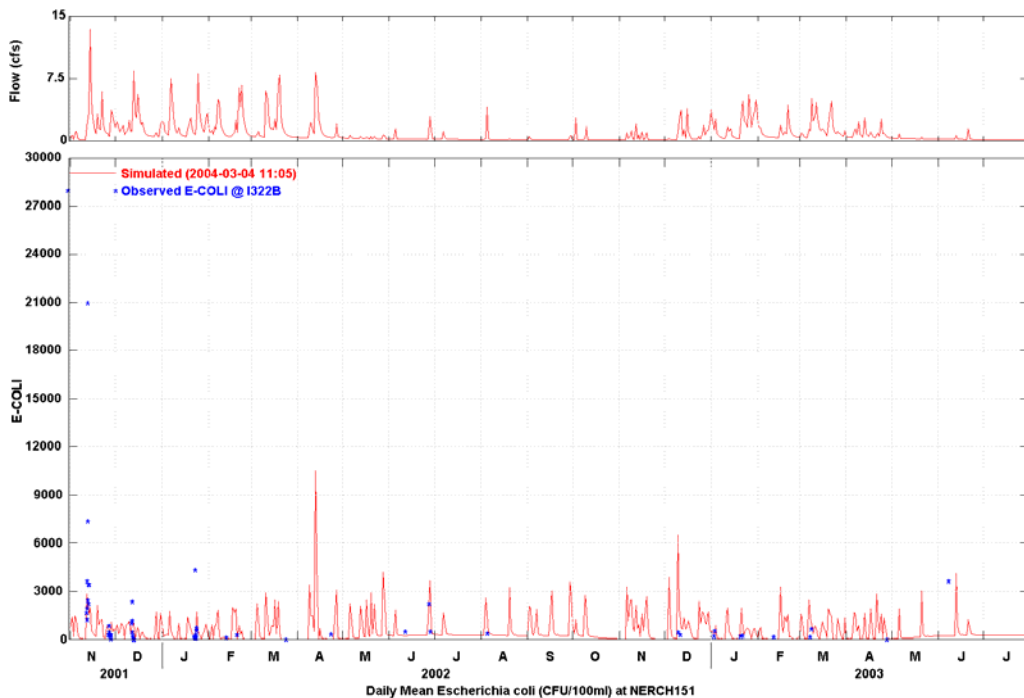


Figure B.12-5 Observed and Simulated Daily EColi Concentrations for Newaukum Creek at Station I322B

Water Quality Plots for Monitoring Stations Upstream of Outlet

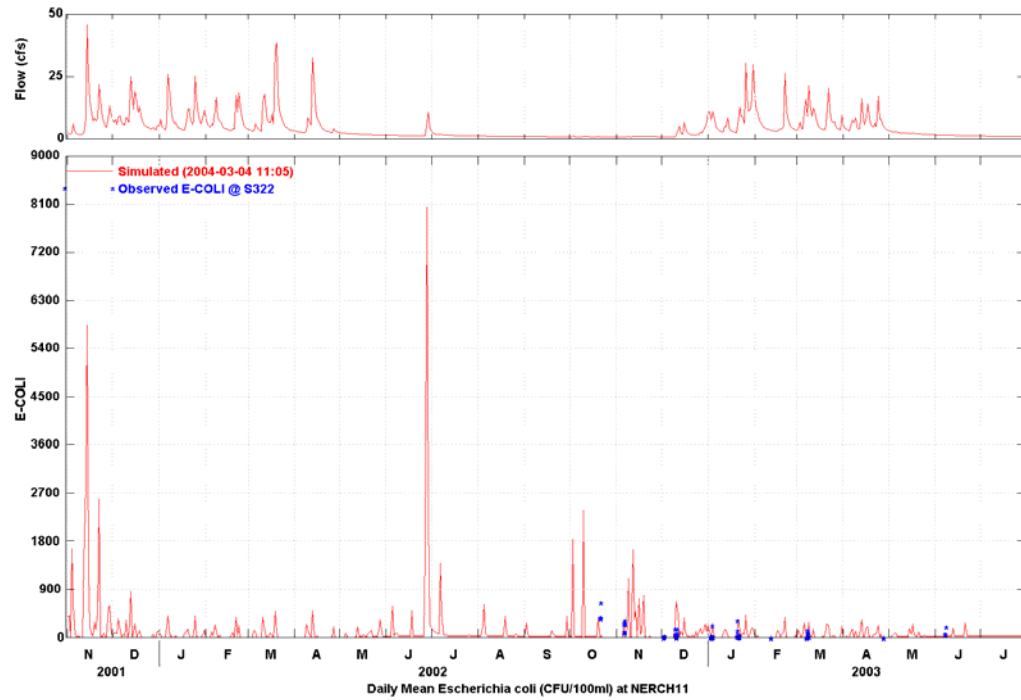


Figure B.12-6 Observed and Simulated Daily EColi Concentrations for Newaukum Creek at Station S322

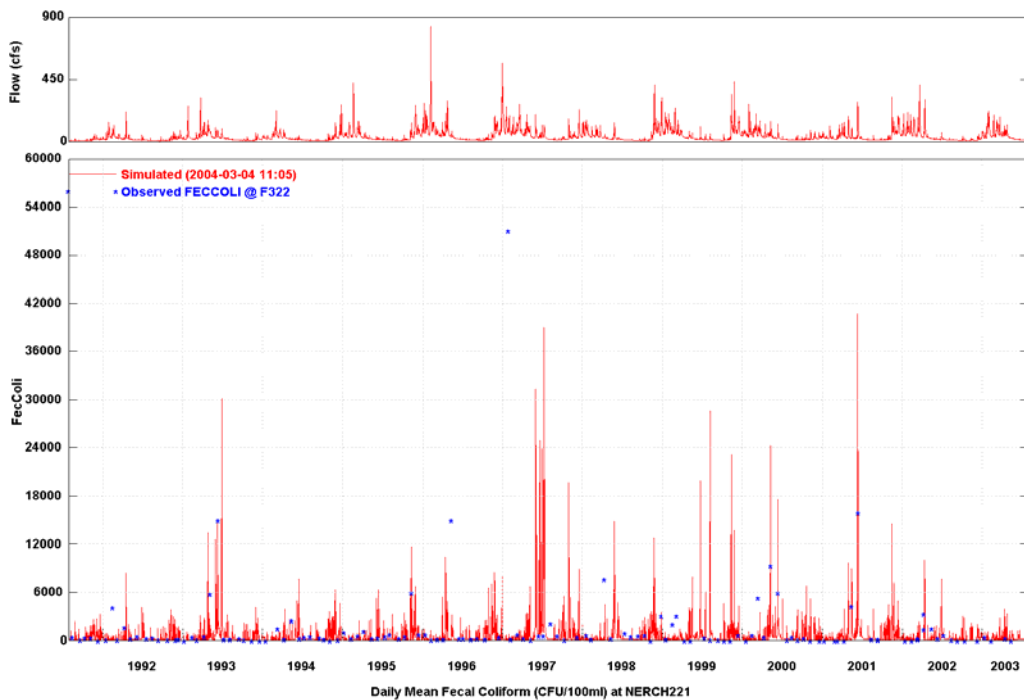


Figure B.13-1 Observed and Simulated Daily Fecal Coliform Concentrations for Newaukum Creek at Station F322

Water Quality Plots for Monitoring Stations Upstream of Outlet

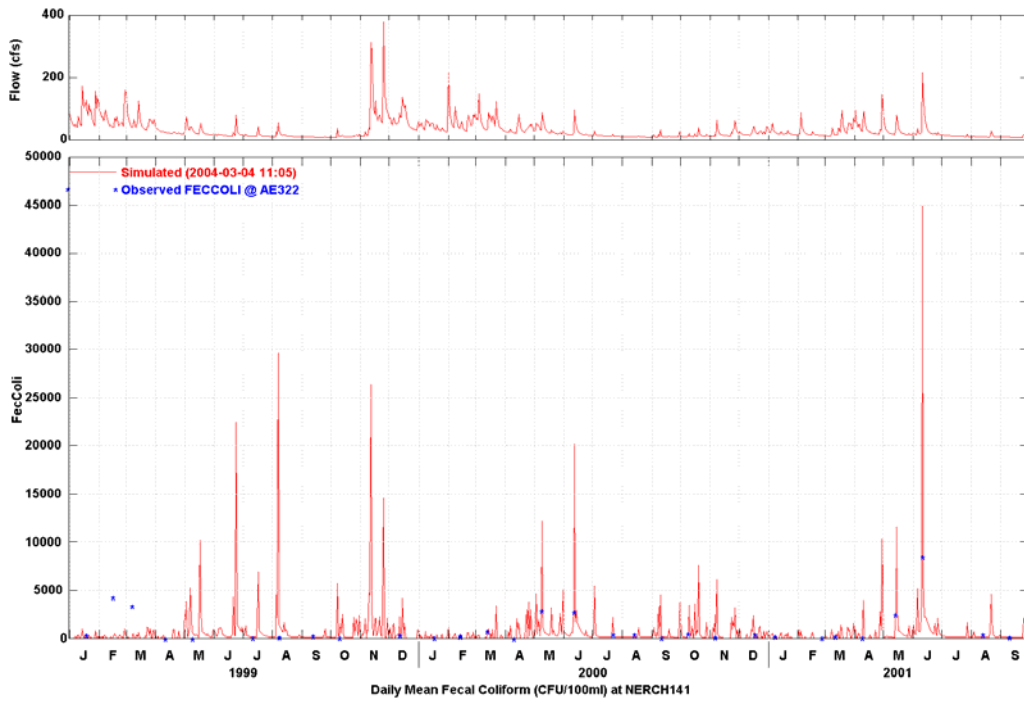


Figure B.13-2 Observed and Simulated Daily Fecal Coliform Concentrations for Newaukum Creek at Station AE322

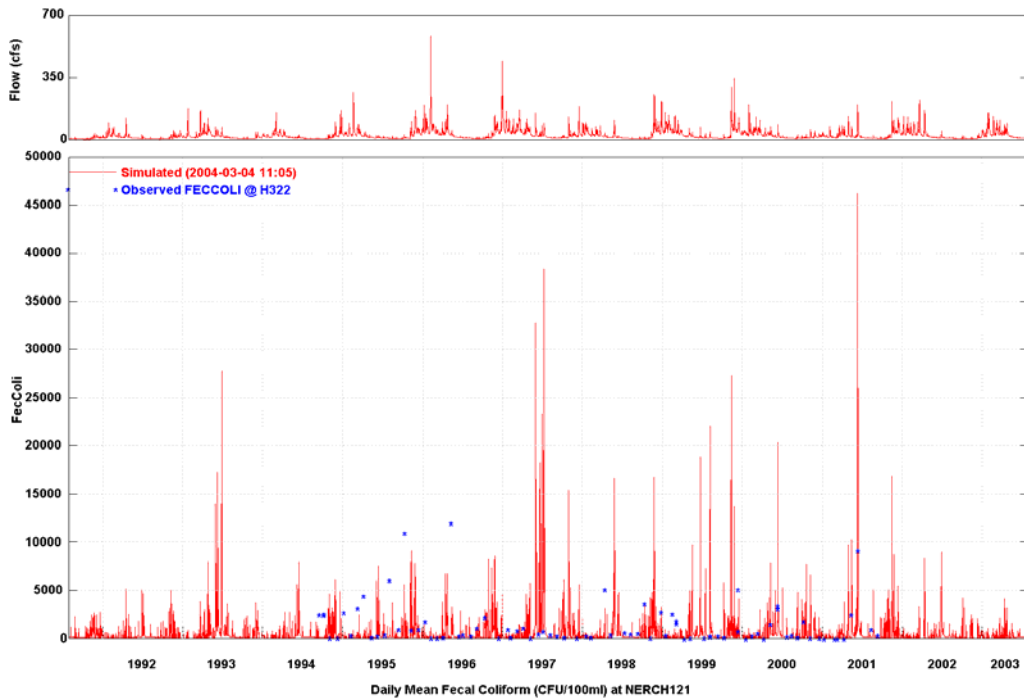


Figure B.13-3 Observed and Simulated Daily Fecal Coliform Concentrations for Newaukum Creek at Station H322

Water Quality Plots for Monitoring Stations Upstream of Outlet

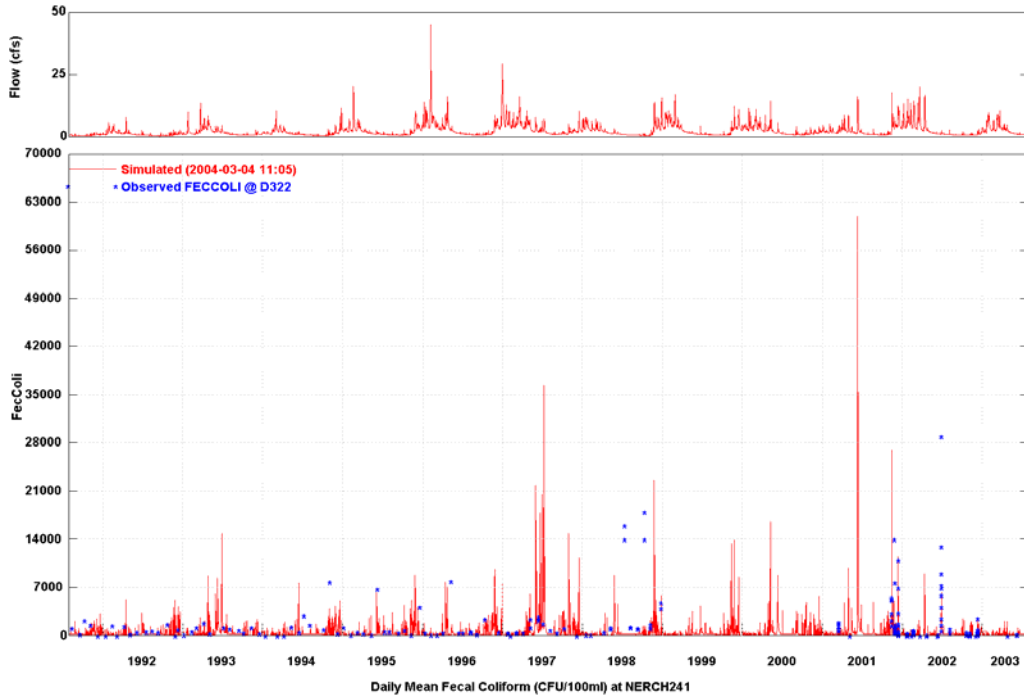


Figure B.13-4 Observed and Simulated Daily Fecal Coliform Concentrations for Newaukum Creek at Station D322

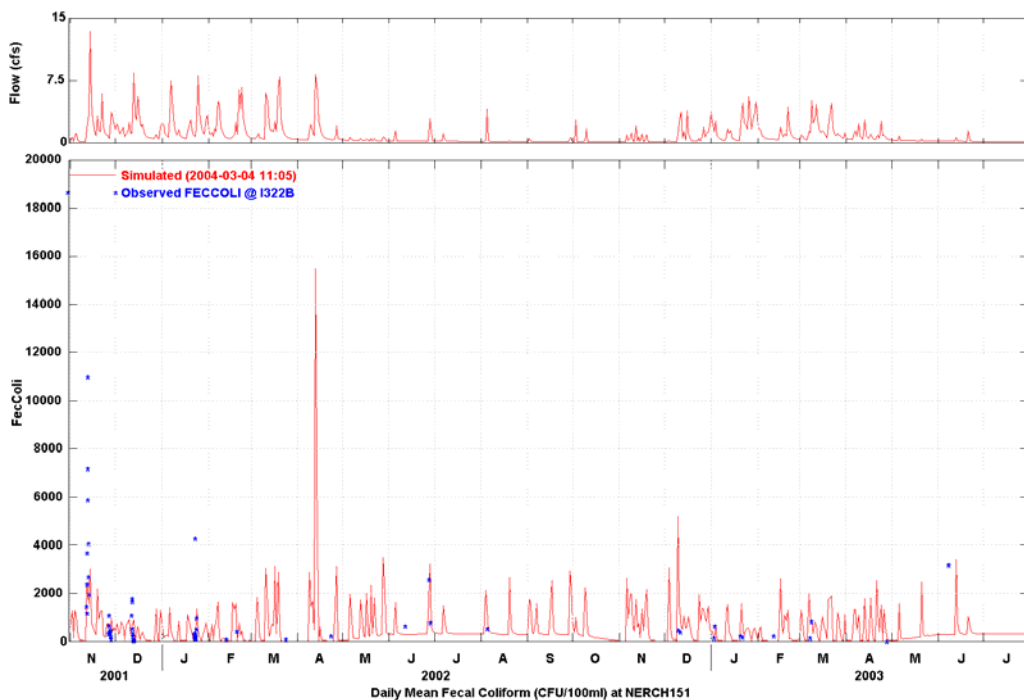


Figure B.13-5 Observed and Simulated Daily Fecal Coliform Concentrations for Newaukum Creek at Station I322B

Water Quality Plots for Monitoring Stations Upstream of Outlet

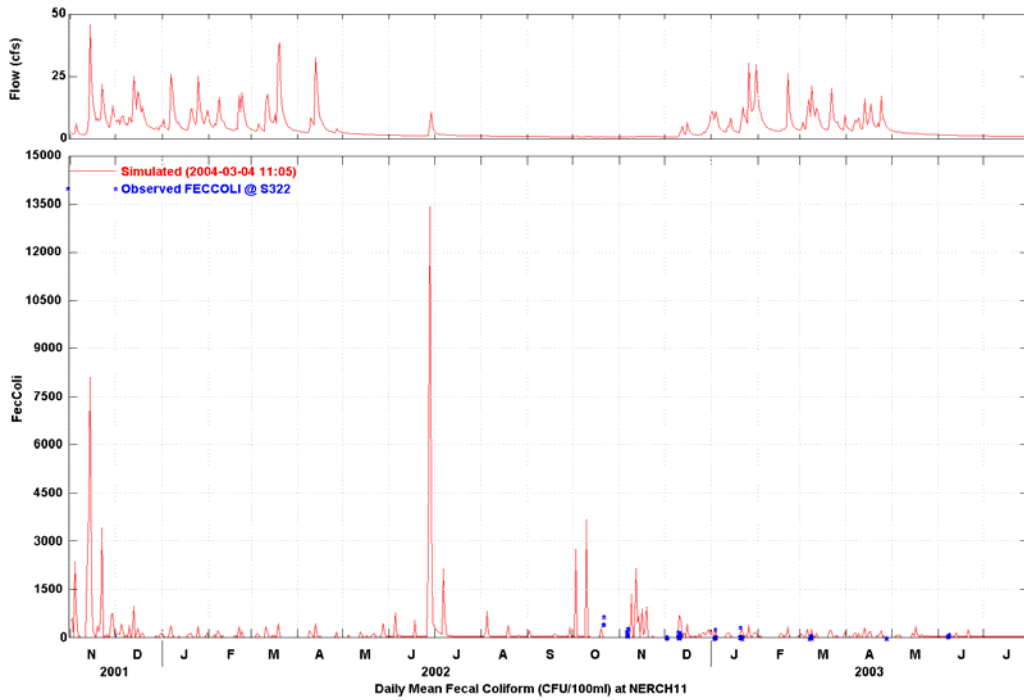


Figure B.13-6 Observed and Simulated Daily Fecal Coliform Concentrations for Newaukum Creek at Station S322

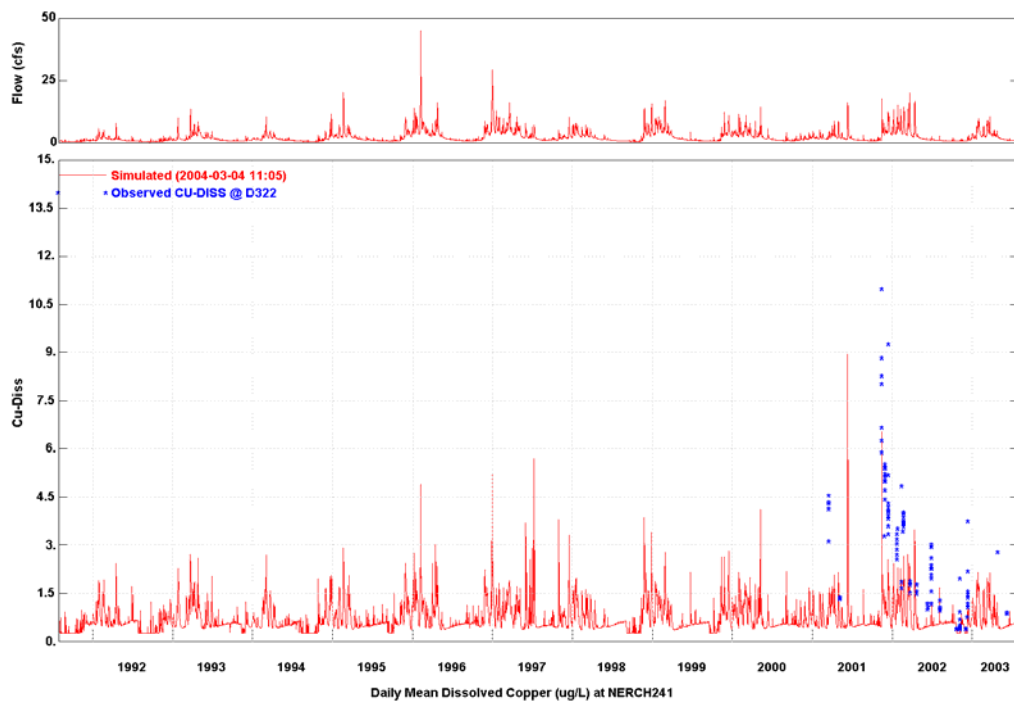


Figure B.14-1 Observed and Simulated Daily Dissolved Copper Concentrations for Newaukum Creek at Station D322

Water Quality Plots for Monitoring Stations Upstream of Outlet

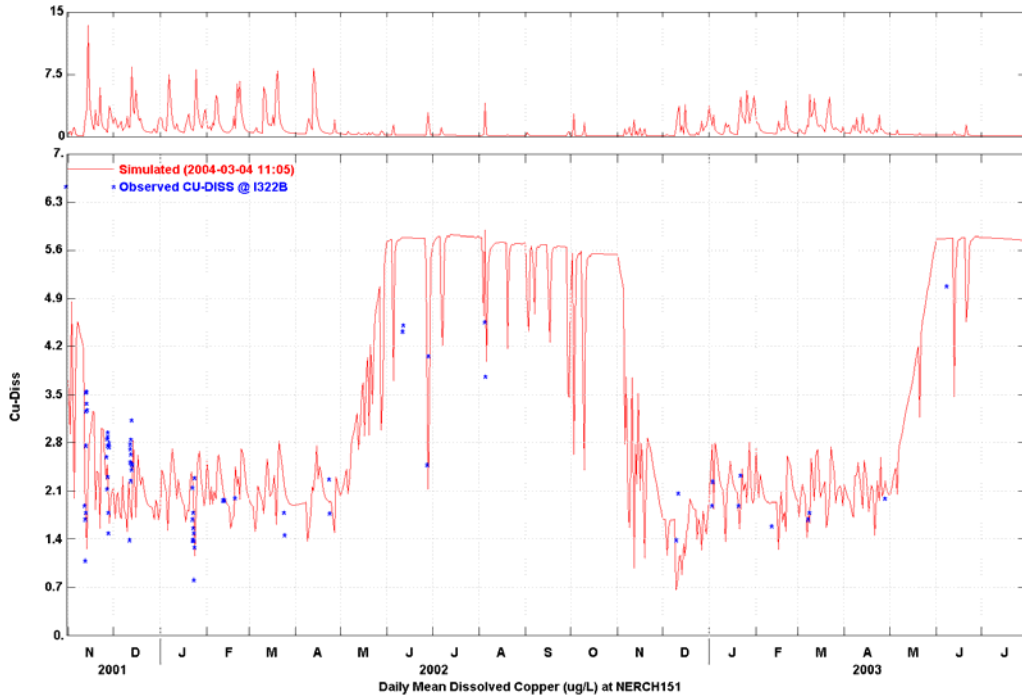


Figure B.14-2 Observed and Simulated Daily Dissolved Copper Concentrations for Newaukum Creek at Station I322B

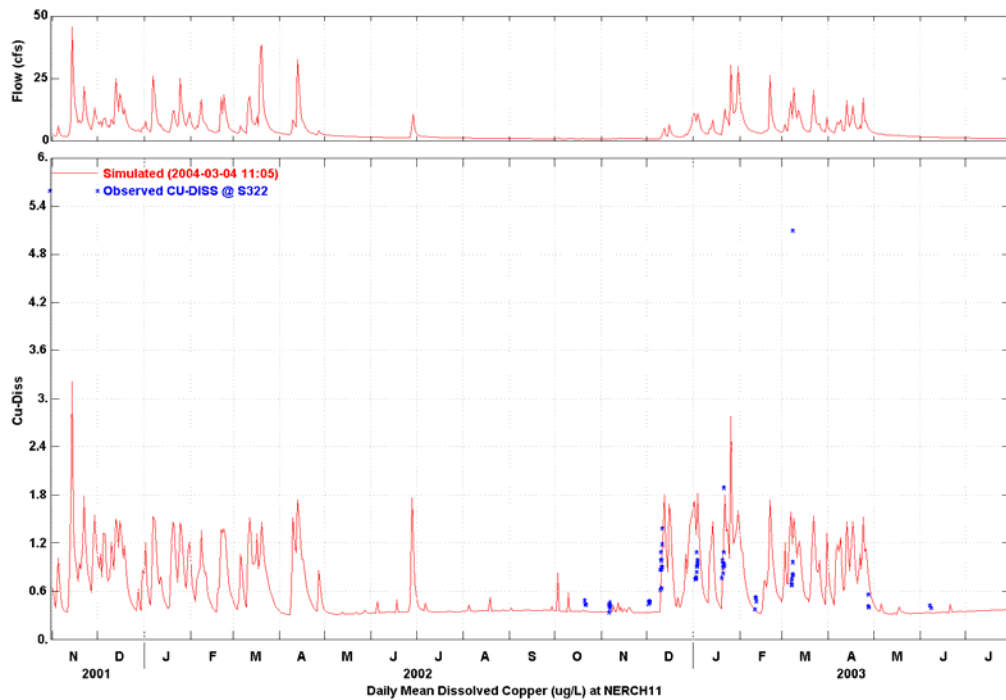


Figure B.14-3 Observed and Simulated Daily Dissolved Copper Concentrations for Newaukum Creek at Station S322

Water Quality Plots for Monitoring Stations Upstream of Outlet

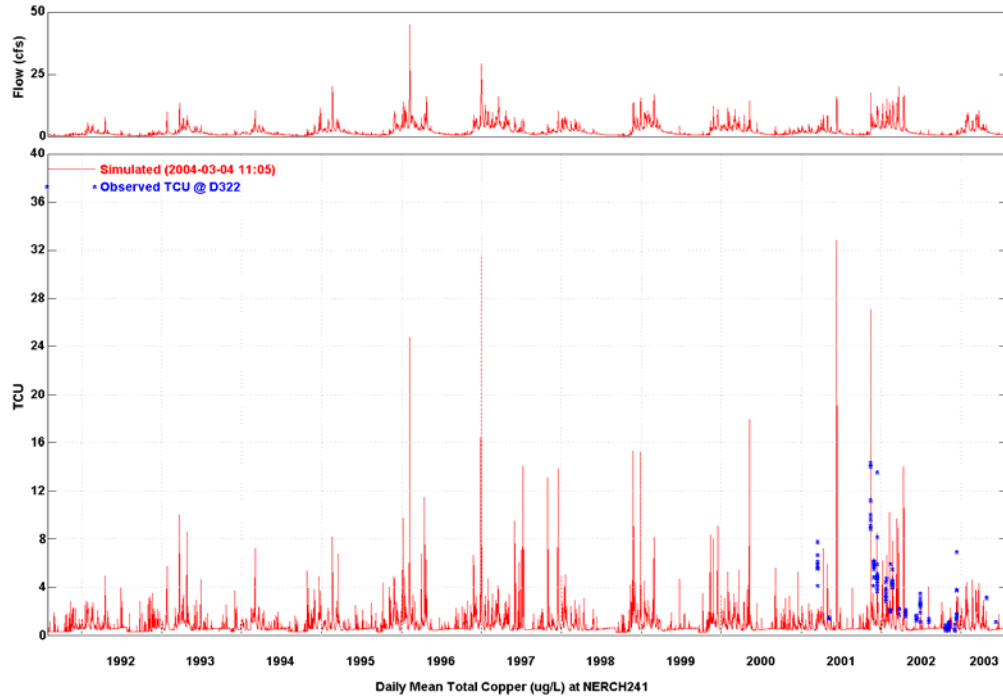


Figure B.15-1 Observed and Simulated Daily Total Copper Concentrations for Newaukum Creek at Station D322

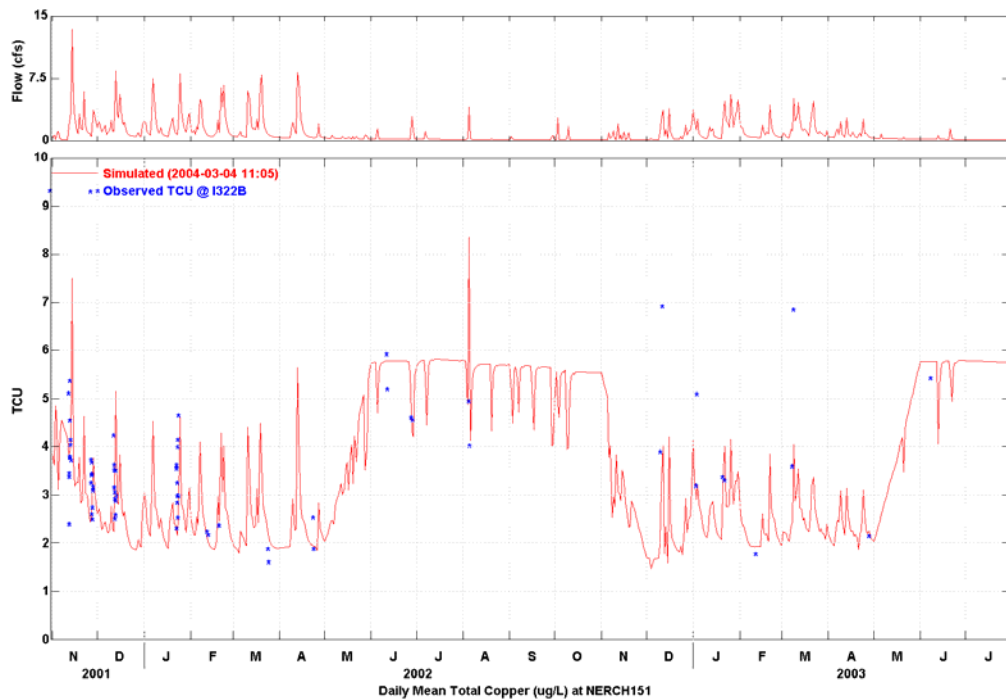


Figure B.15-2 Observed and Simulated Daily Total Copper Concentrations for Newaukum Creek at Station I322B

Water Quality Plots for Monitoring Stations Upstream of Outlet

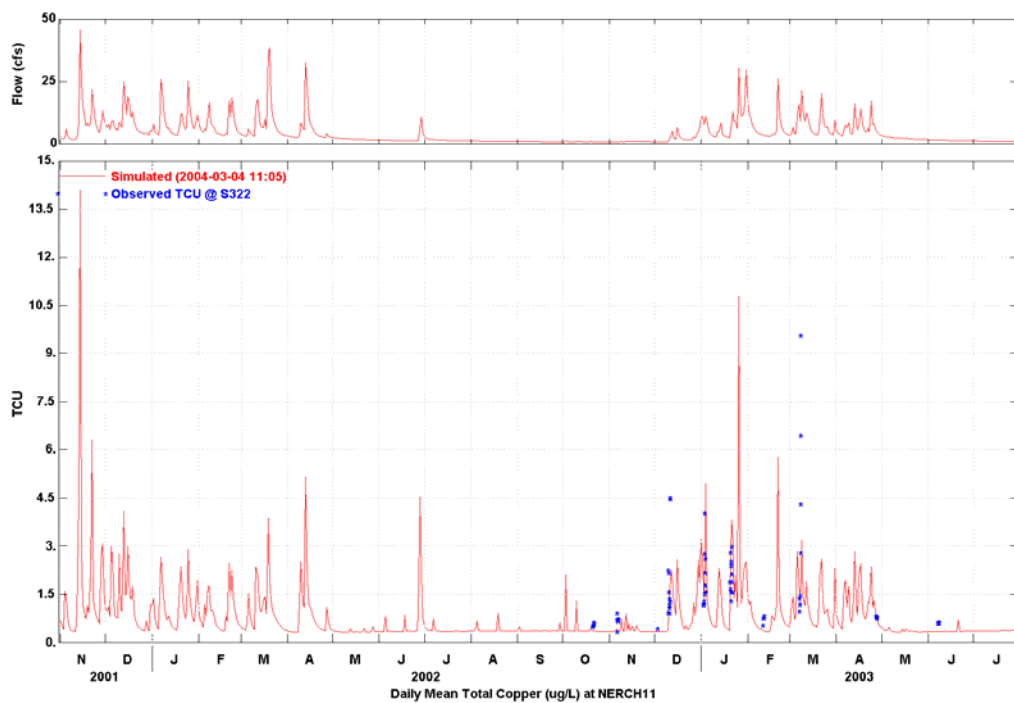


Figure B.15-3 Observed and Simulated Daily Total Copper Concentrations for Newaukum Creek at Station S322