





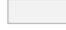
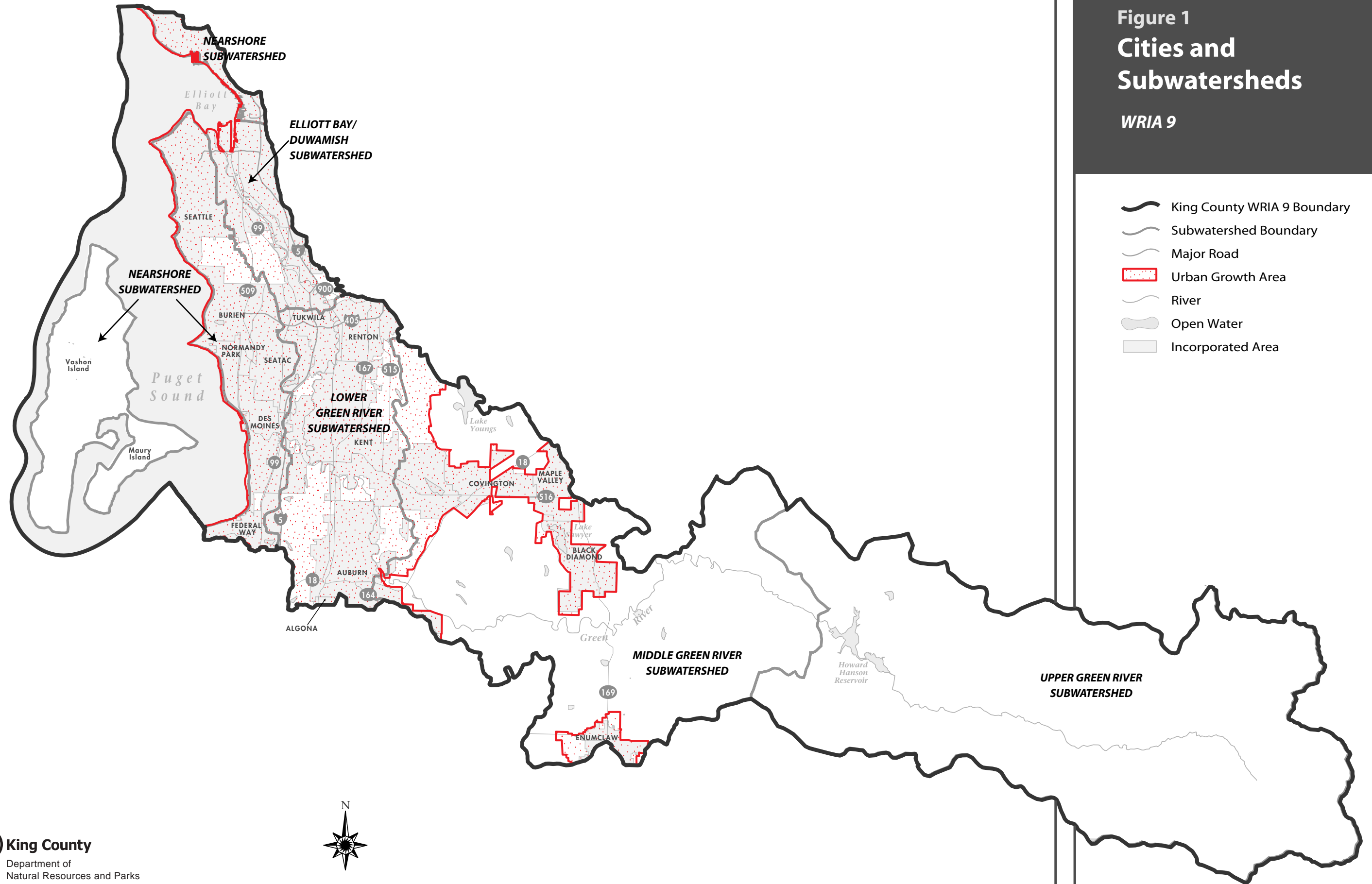


Figure 1
Cities and
Subwatersheds

WRIA 9

-  King County WRIA 9 Boundary
-  Subwatershed Boundary
-  Major Road
-  Urban Growth Area
-  River
-  Open Water
-  Incorporated Area



Department of
 Natural Resources and Parks

Water and Land Resources Division
 GIS and Visual Communications & Web Units

0203 01 NTAA.ai MD,WGC,MD,SK



0 2 4 Miles

December 2001