

Figure 4-2. Pt. Wells (top 6 plots) and Possession Sound (bottom 6 plots)
Temperature ($^{\circ}$ C) 2001

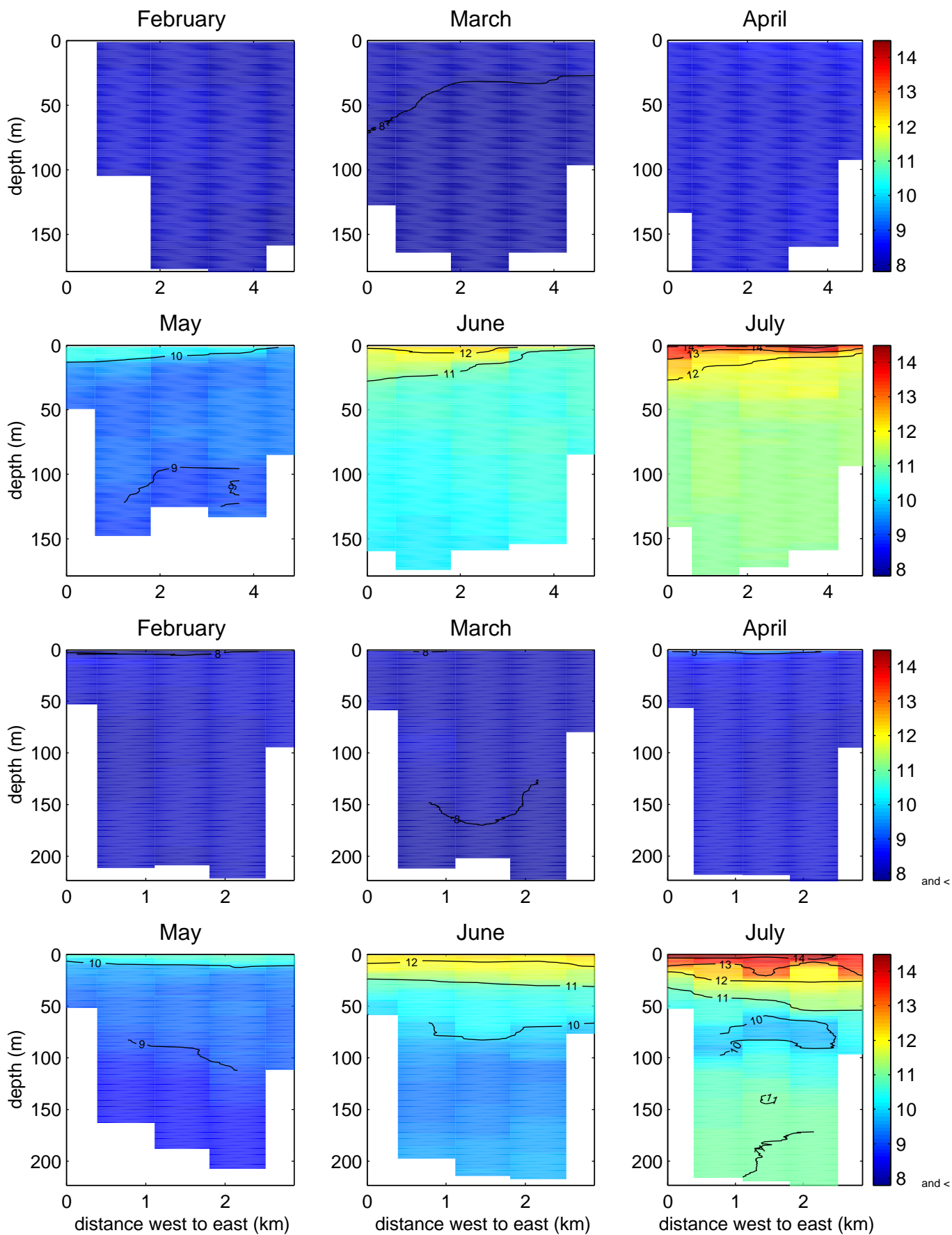


Figure 4–3. West Point (top 6 plots) and Alki (bottom 5 plots) Temperature ($^{\circ}$ C) 2001

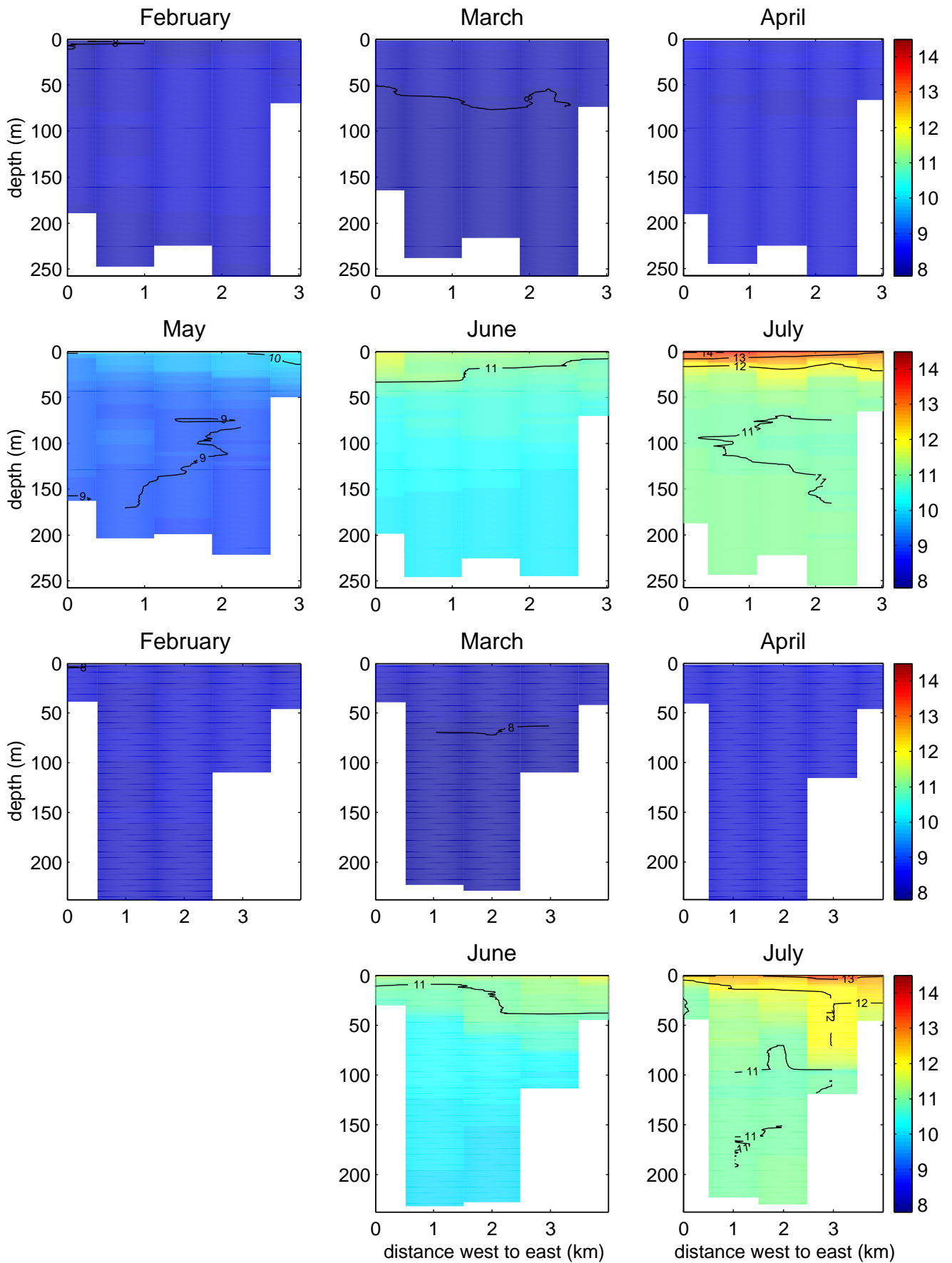


Figure 4-4. EdmondsTemperature ($^{\circ}$ C) 2001

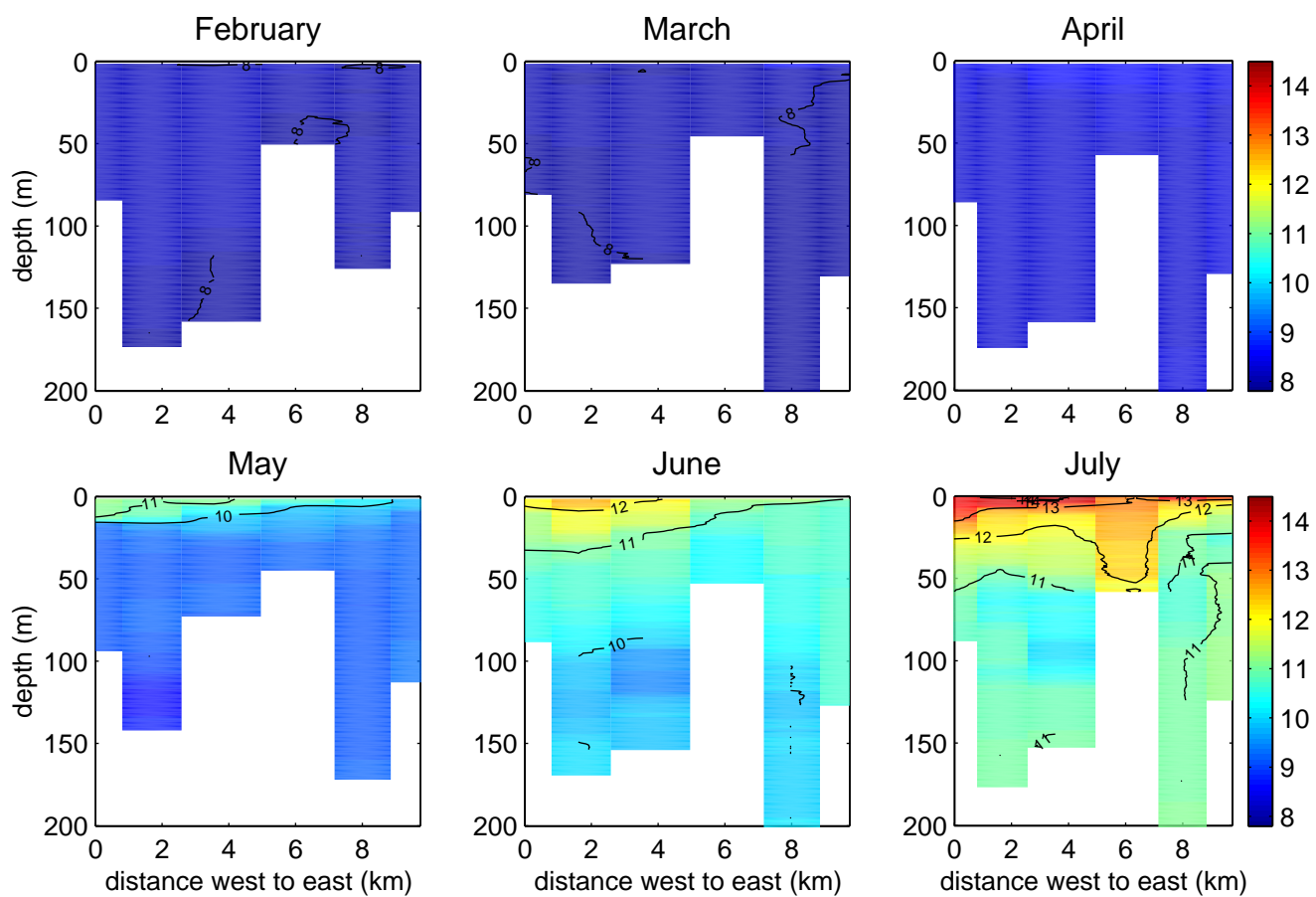


Figure 4-5. Pt. Wells (top 6 plots) and Possession Sound (bottom 6 plots) Salinity (PSS) 2001

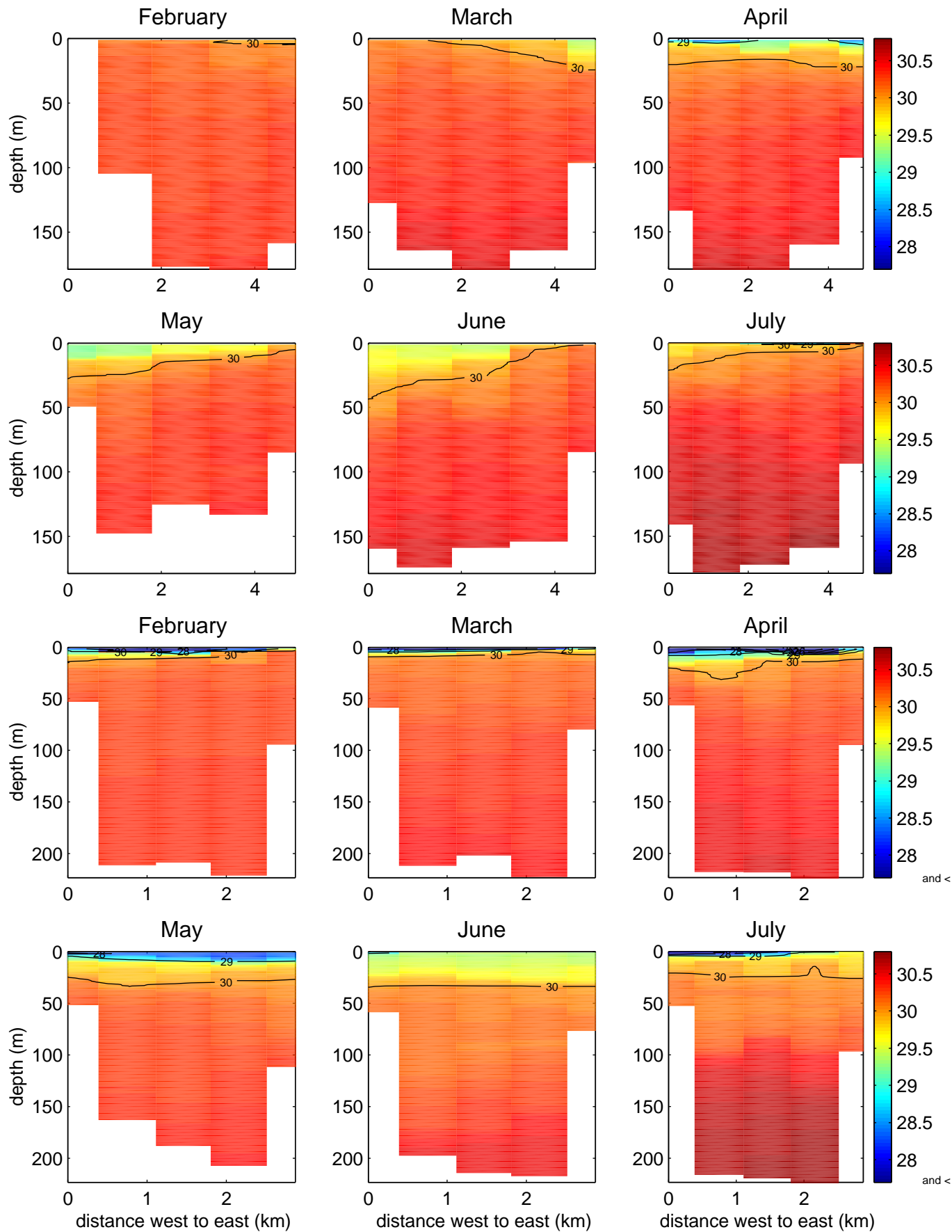


Figure 4-6. West Point (top 6 plots) and Alki (bottom 5 plots) Salinity (PSS) 2001

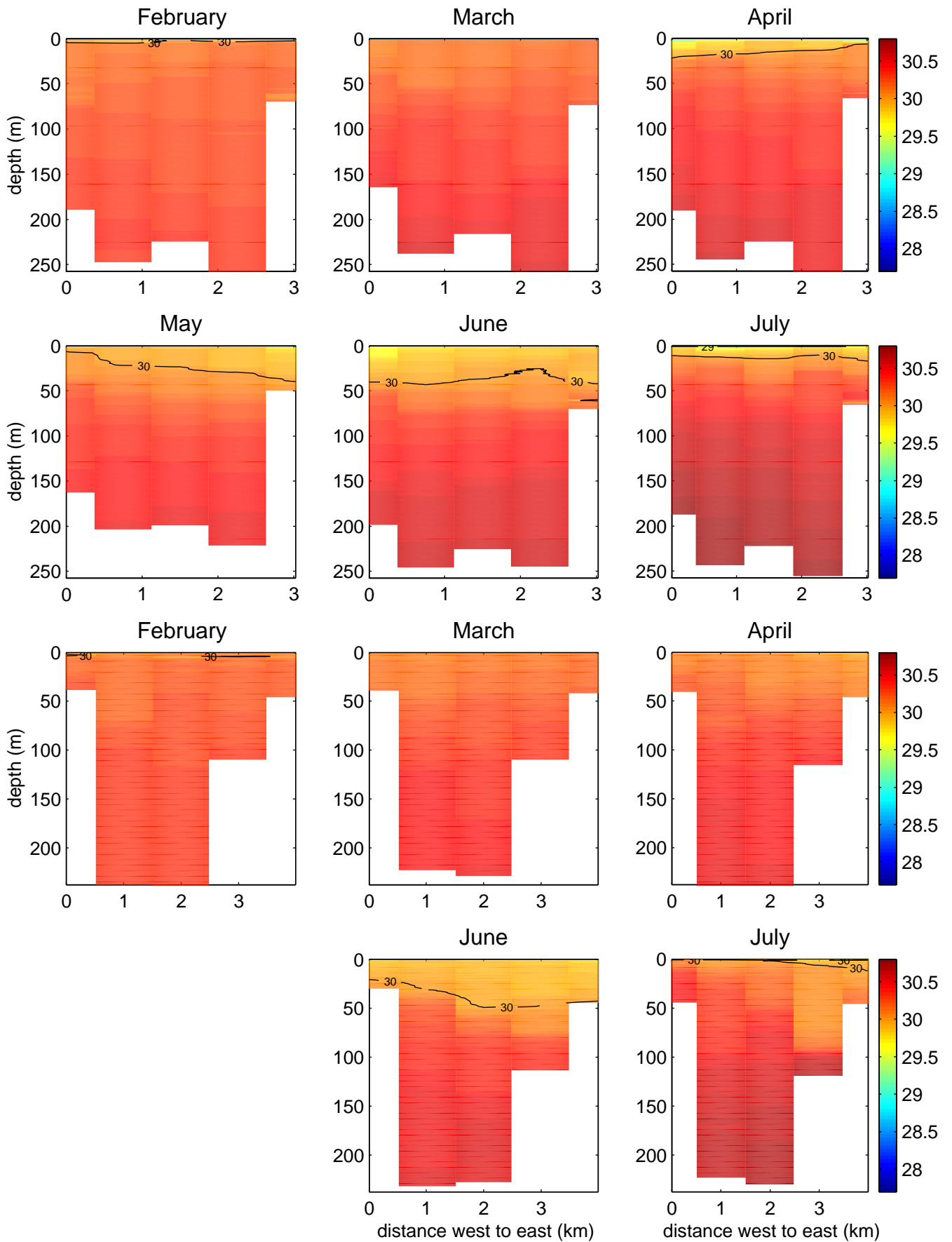


Figure 4-7. Edmonds Salinity (PSS) 2001

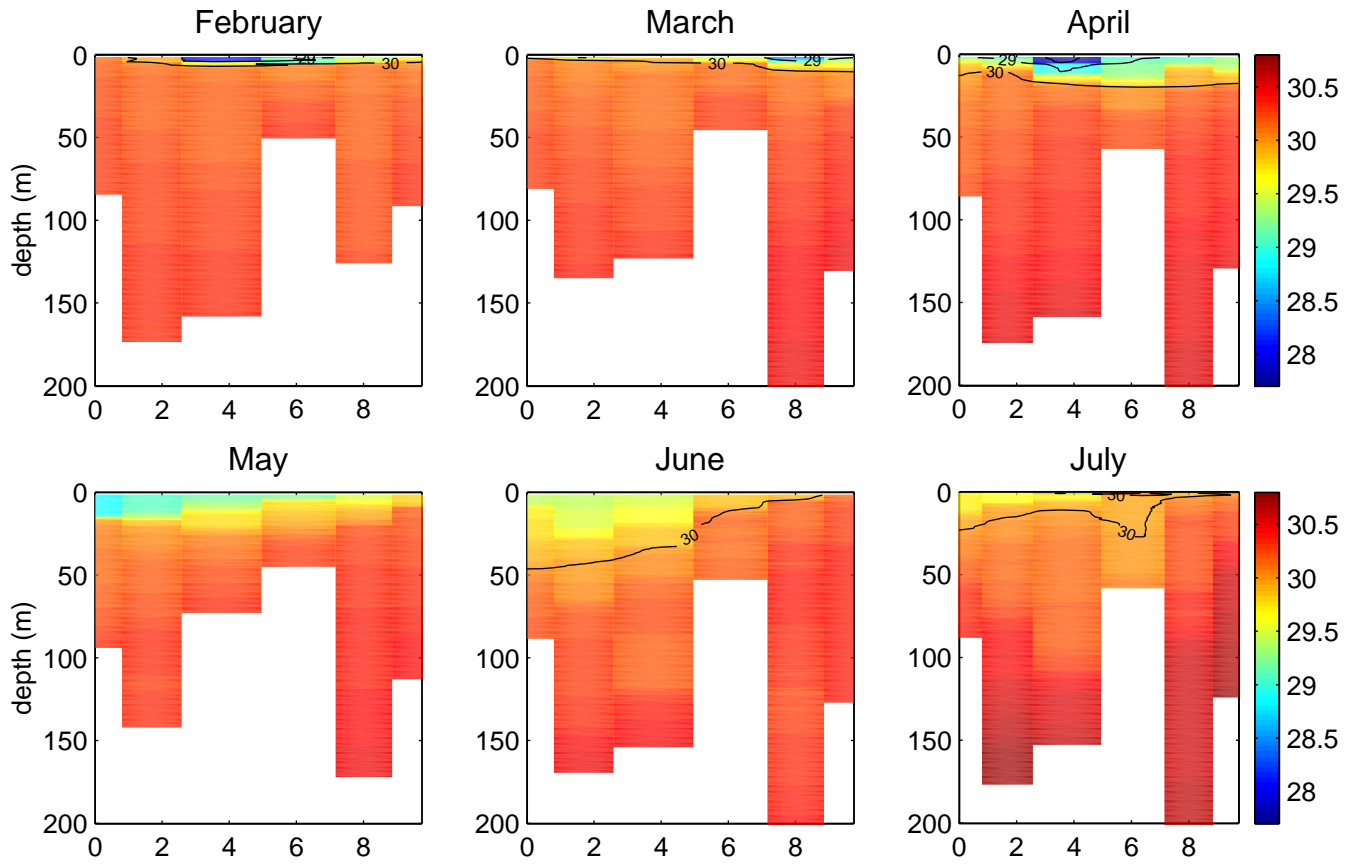


Figure 4-8. Point Wells (top 6 plots) and Possession Sound (bottom 6 plots)
Density (σ_t) 2001

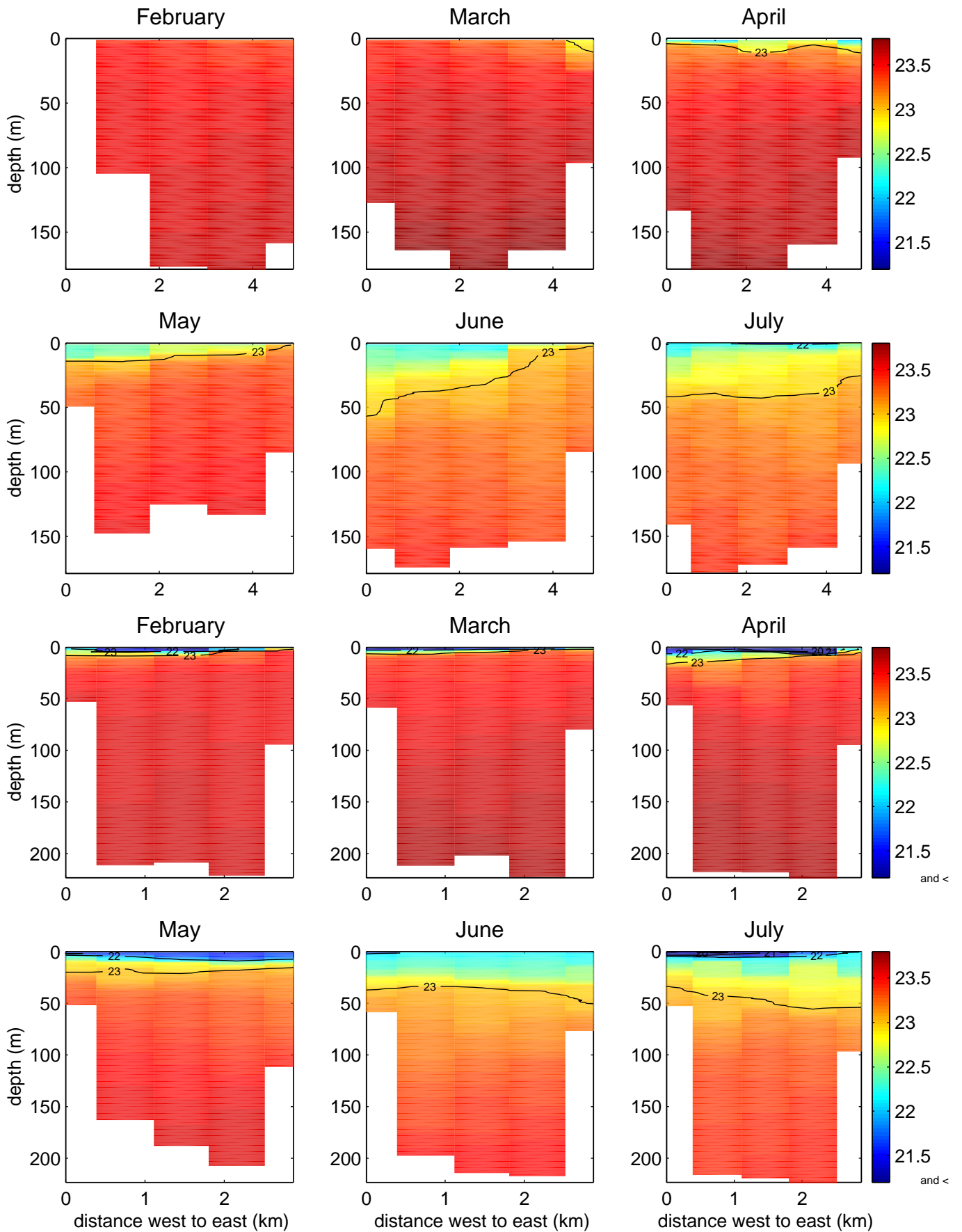


Figure 4-9. West Point (top 6 plots) and Alki (bottom 5 plots) Density (sigma-t) 2001

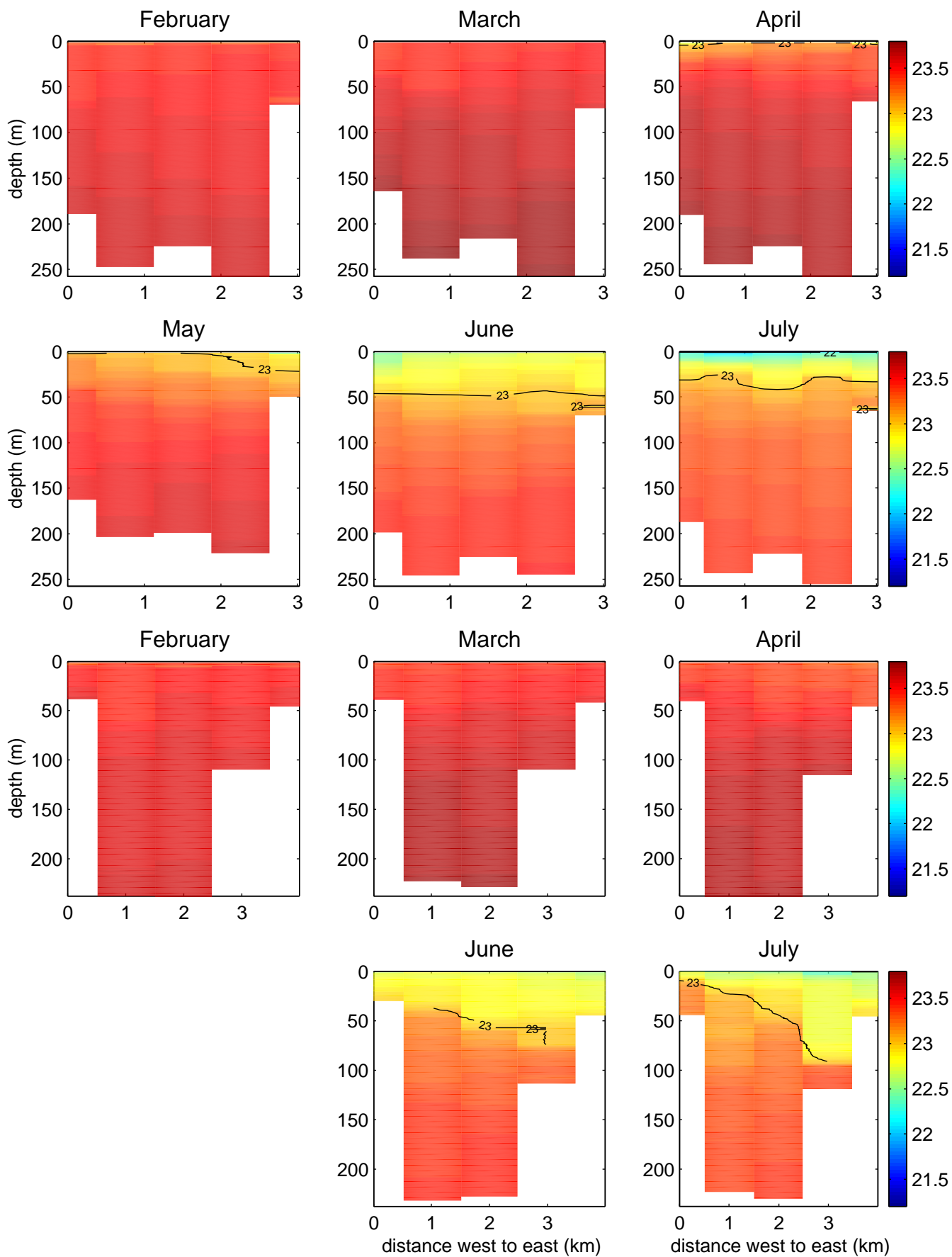


Figure 4-10. Edmonds Density (sigma-t) 2001

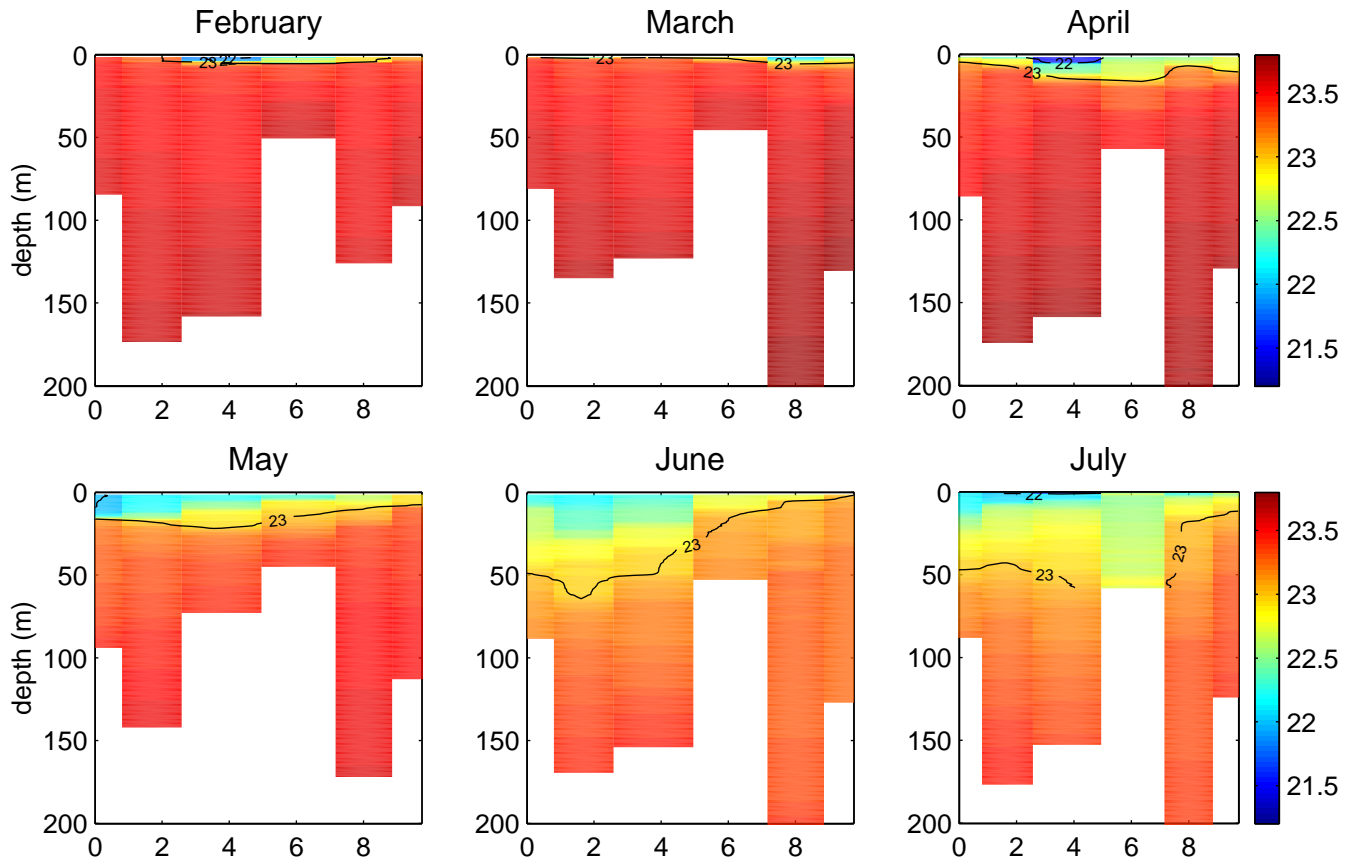


Figure 4-11. Pt. Wells (top 6 plots) and Possession Sound (bottom 6 plots) PAR ($\mu\text{mol}/\text{m}^2\text{s}$) 2001

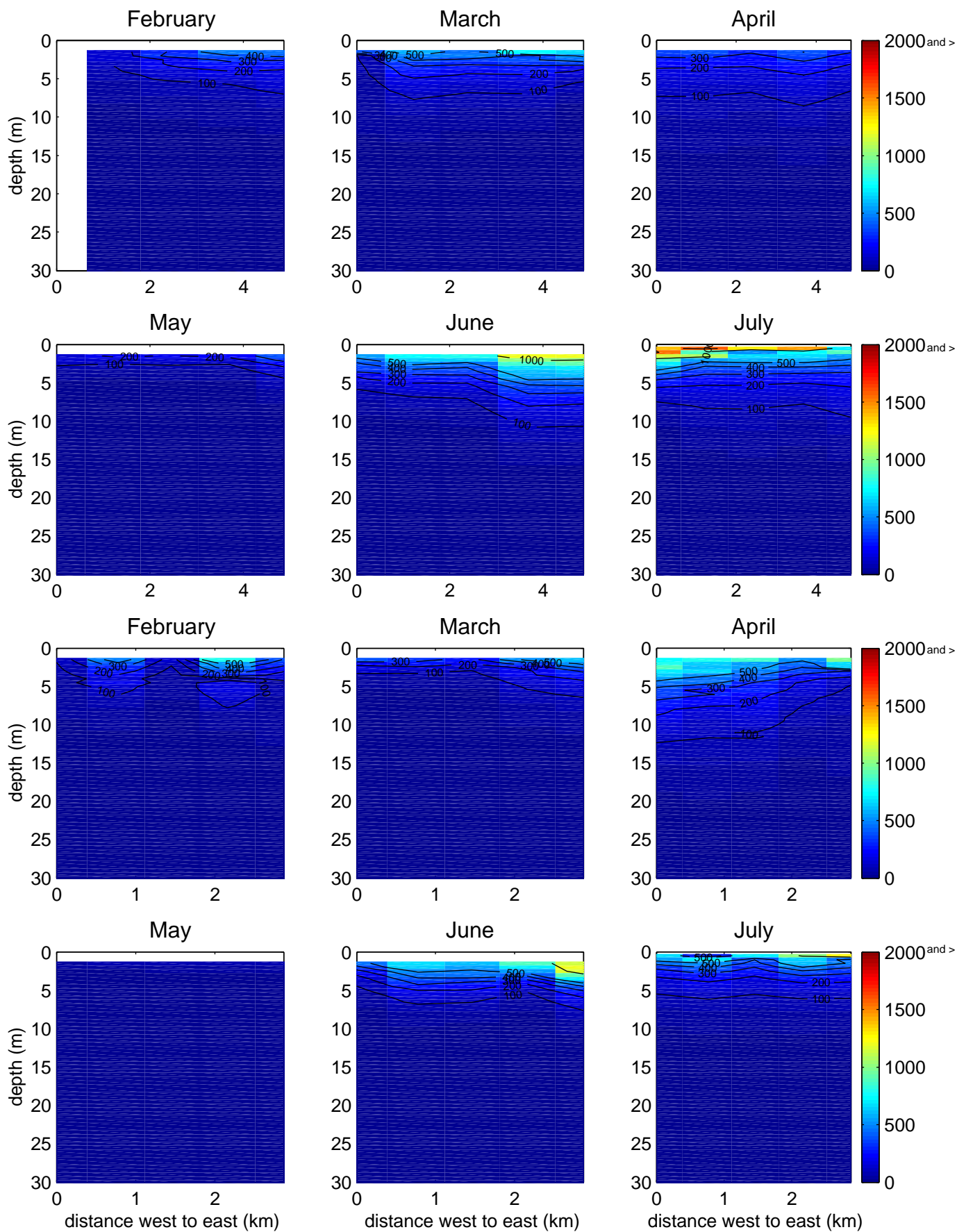


Figure 4-12. West Point (top 6 plots) and Alki (bottom 5 plots) PAR ($\mu\text{mol}/\text{m}^2\text{s}$) 2001

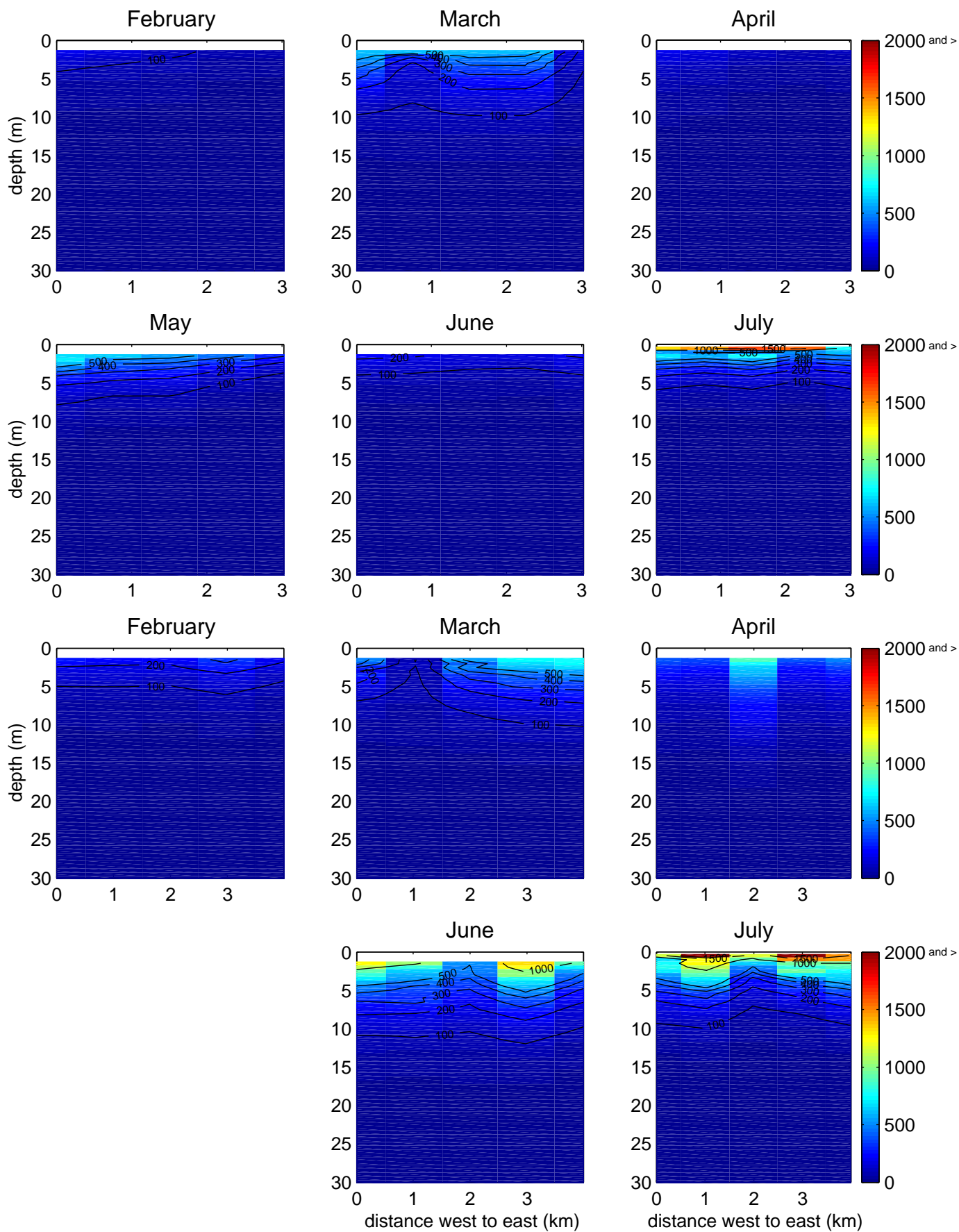


Figure 4-13. Edmonds PAR ($\mu\text{mol}/\text{m}^2\text{s}$) 2001

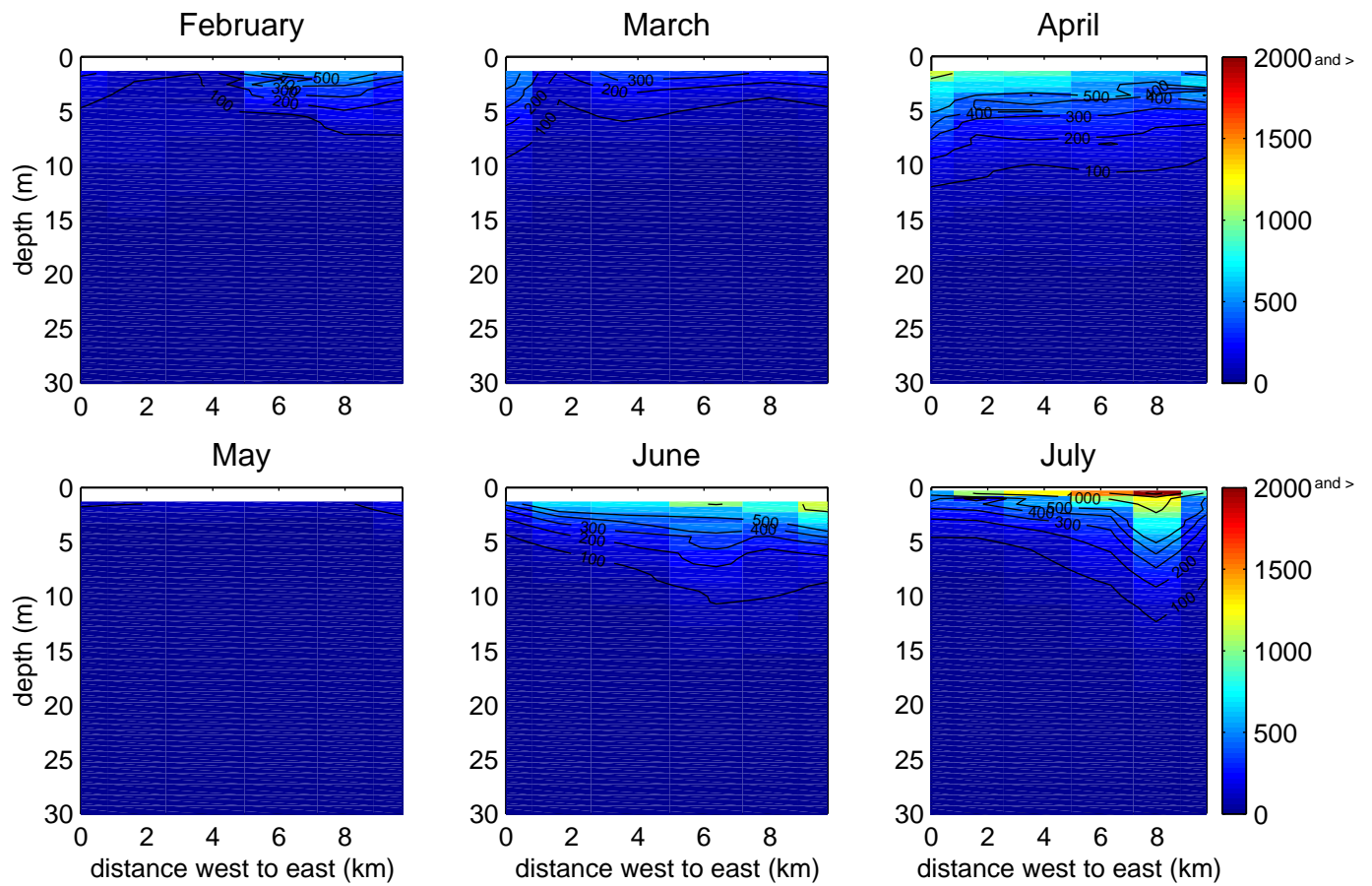


Figure 4-14. Point Wells (top 6 plots) and Possession Sound (bottom 6 plots) Chlorophyll-a (mg/m^3) 2001

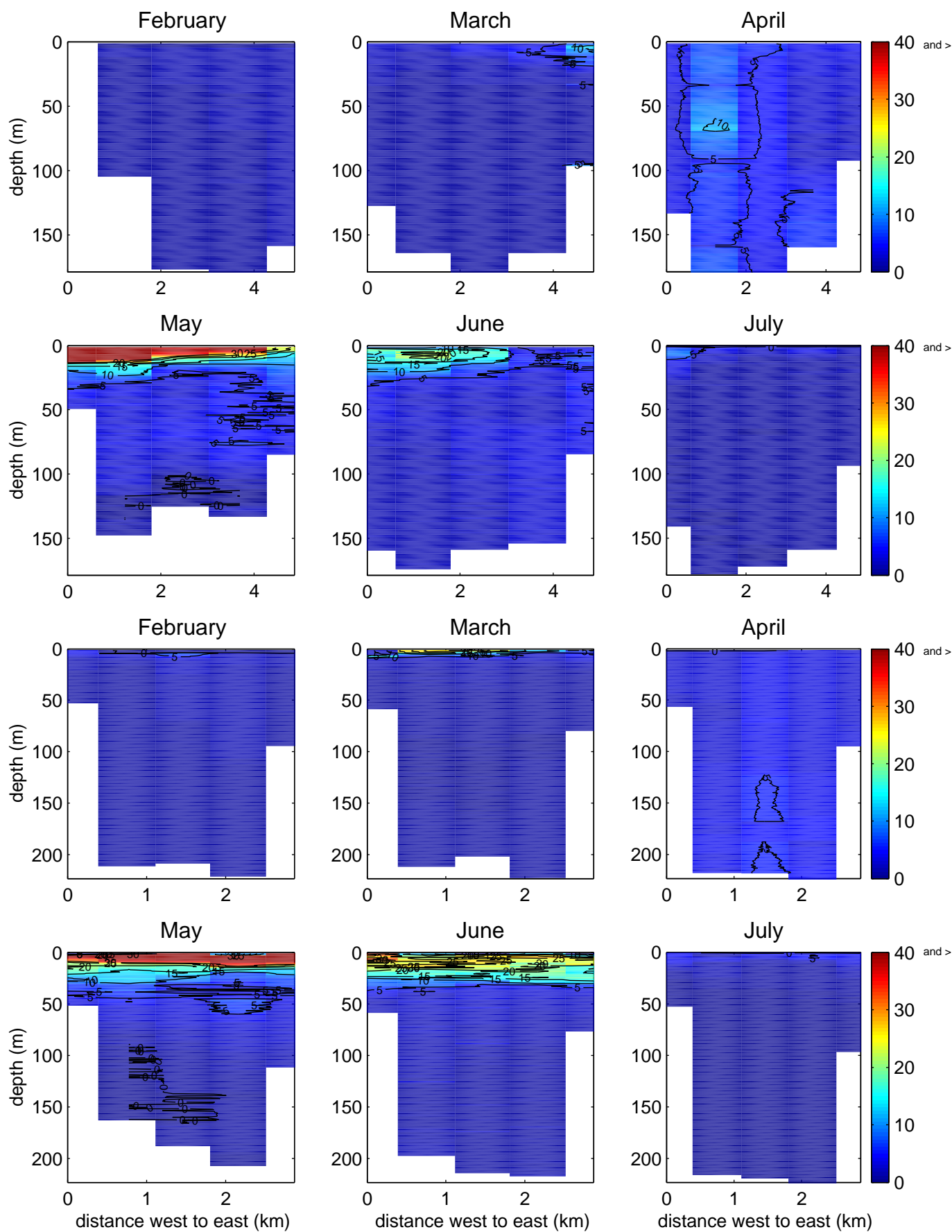


Figure 4-15. West Point (top 5 plots) and Alki (bottom 5 plots) Chlorophyll-a (mg/m^3) 2001

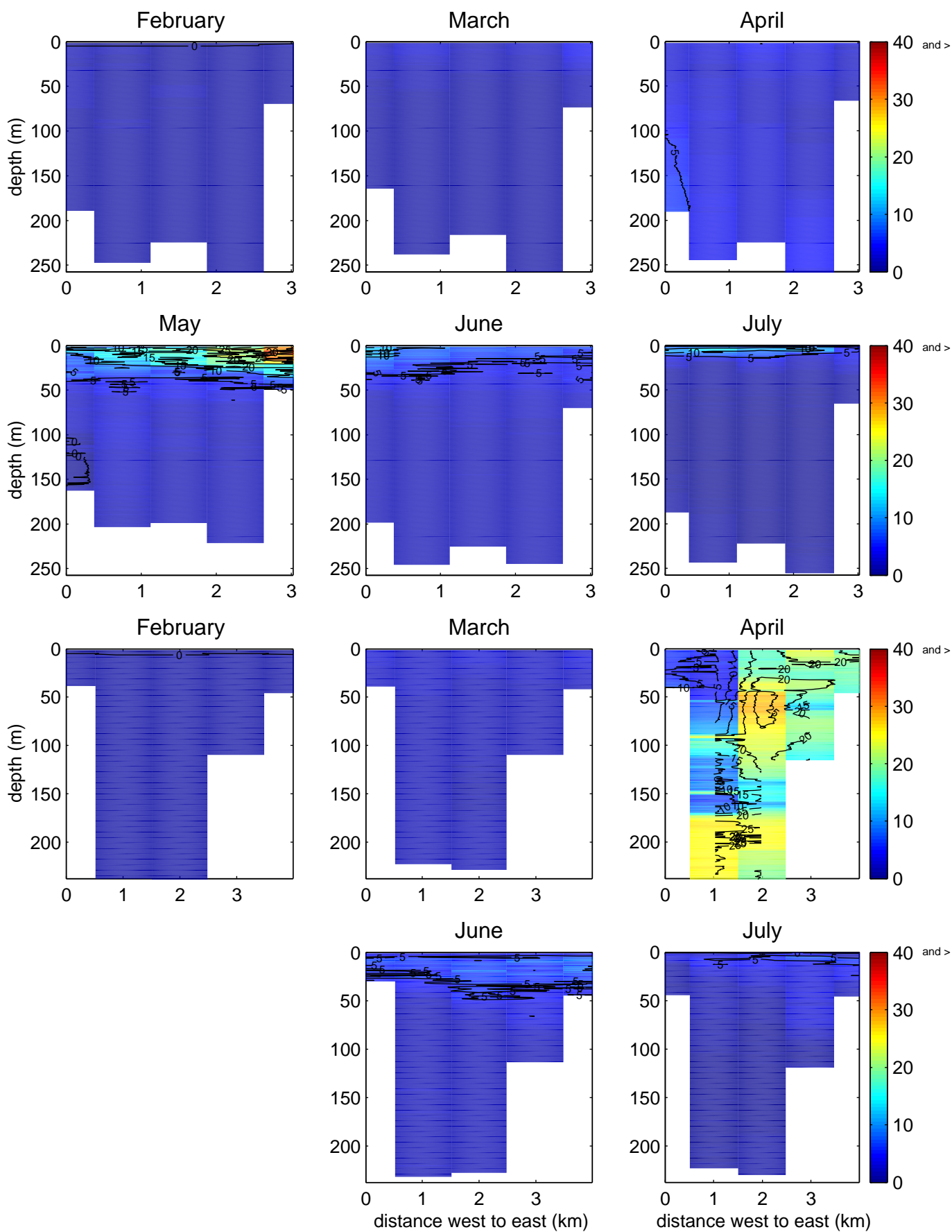


Figure 4-16. Edmonds Chlorophyll-a (mg/m^3) 2001

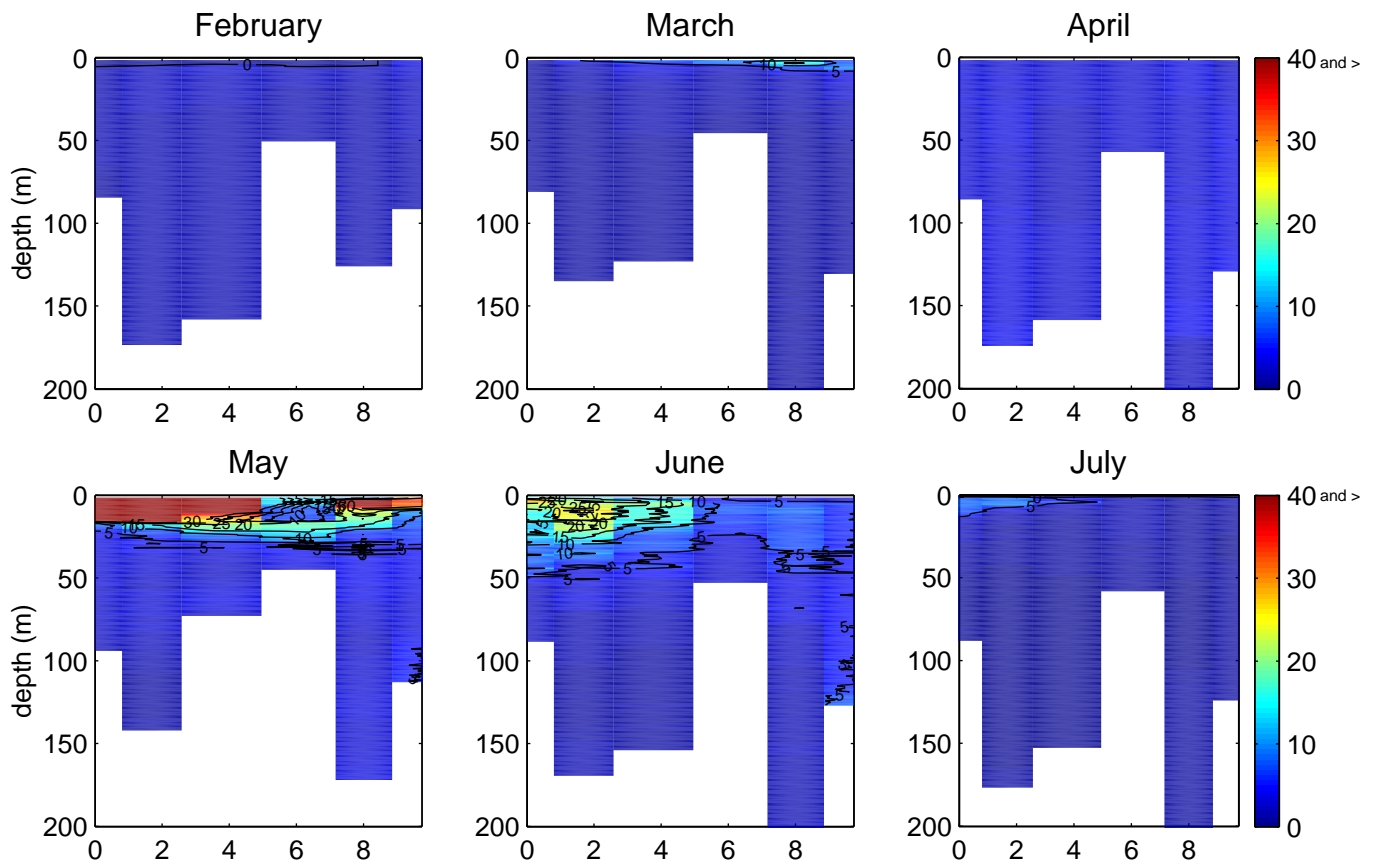


Figure 4-17. Point Wells (top 6 plots) and Possession Sound (bottom 6 plots)
Dissolved Oxygen (mg/L) 2001

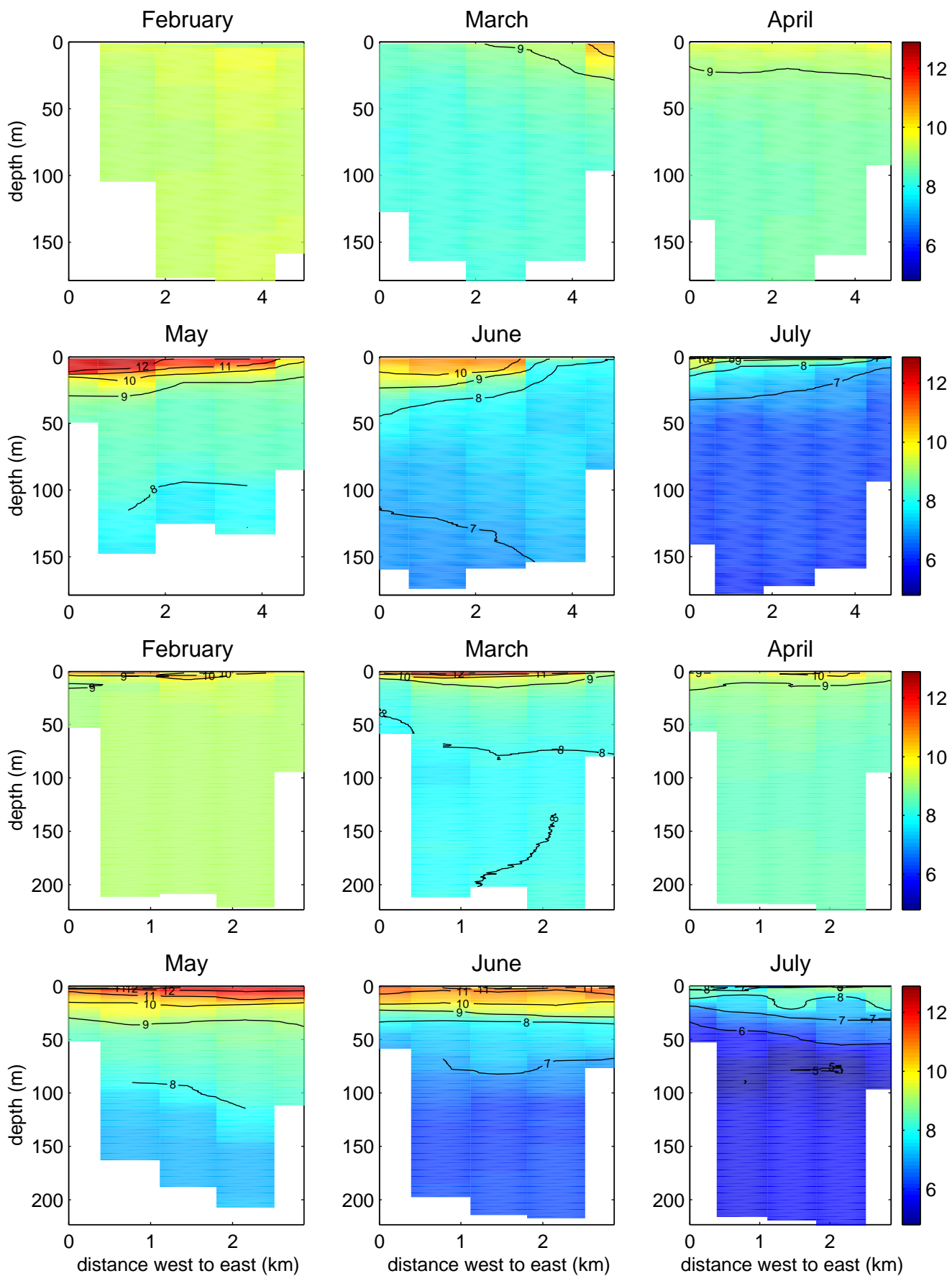


Figure 4-18. West Point (top 6 plots) and Alki (bottom 5 plots) Dissolved Oxygen (mg/L) 2001

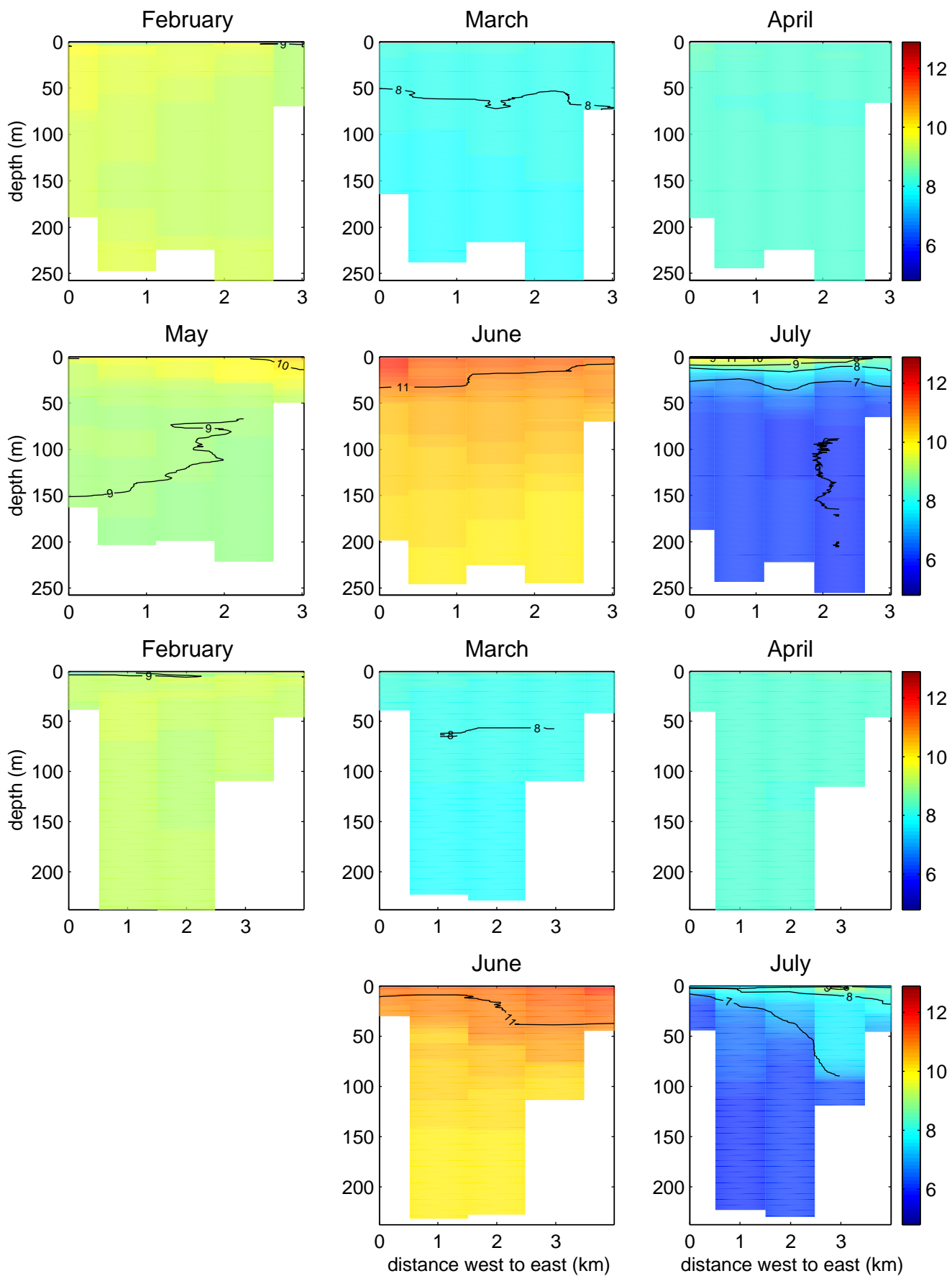


Figure 4-19. Edmonds Dissolved Oxygen (mg/L) 2001

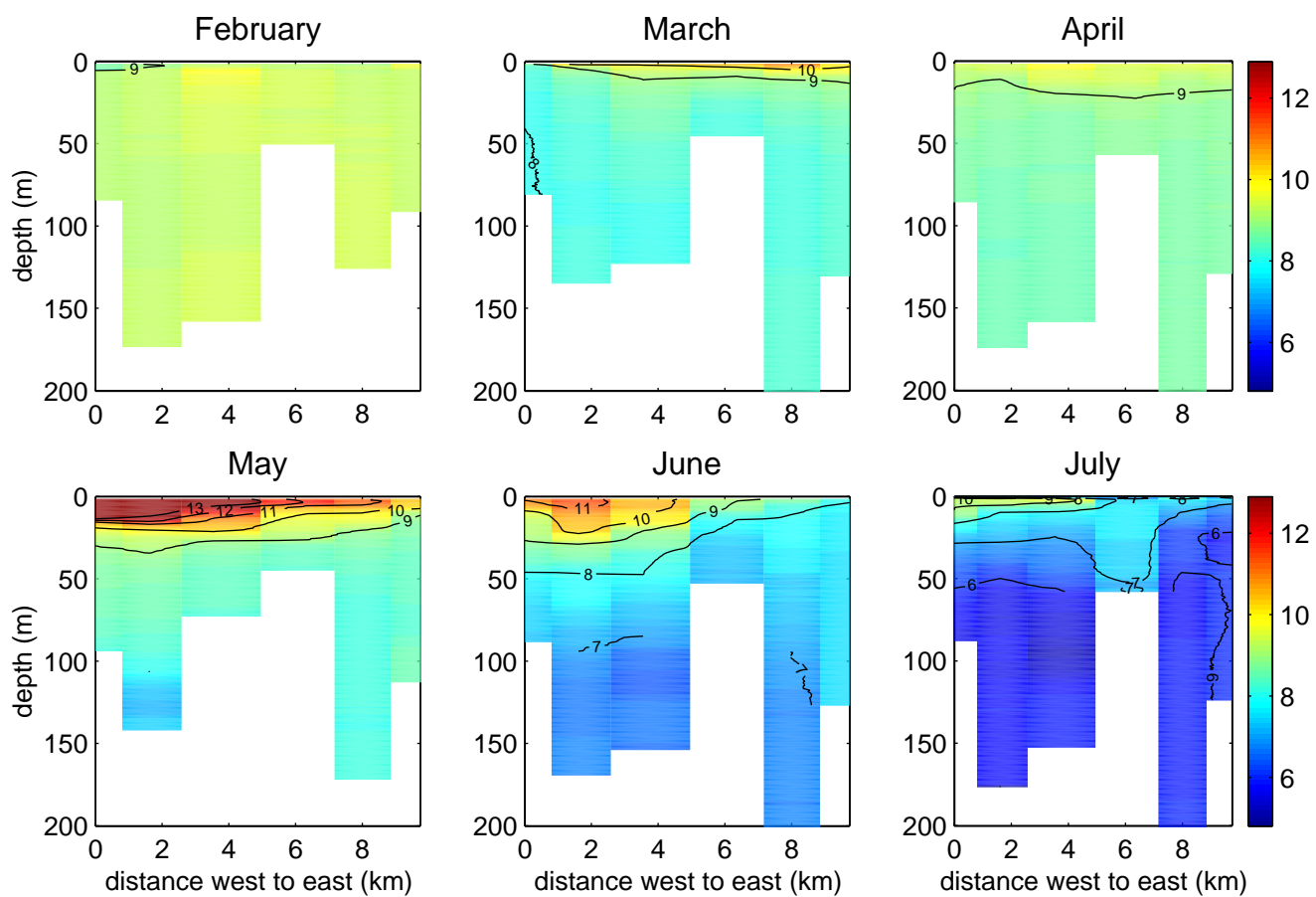


Figure 4-20. July Tubidity (FTU) 2001

