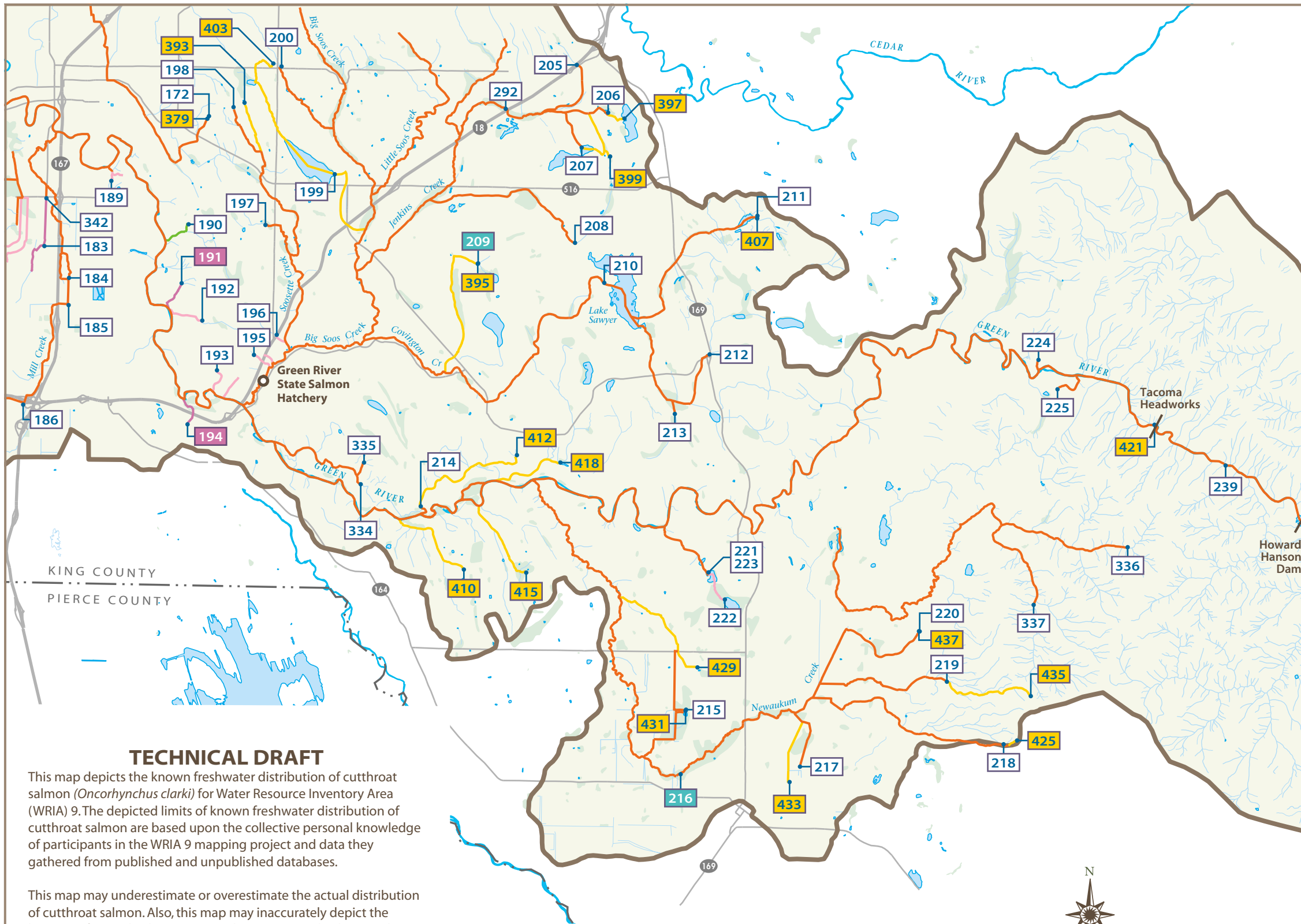


Figure FD-10

Cutthroat Distribution in WRIA 9

Map 2 of 3



- Major Road
- River/Stream
- King County Boundary
- Open Water
- Wetlands
- King County WRIA 9 Area

Cutthroat Distribution - Streams

- Present - First Hand Information
Species is known to be present due to first-hand observations, or from electro-fishing, spawner surveys, field reports, and other direct sources of data.
- Present - Second Hand Information
Species is thought to be present from second-hand observations and information.
- Should be Present
Species should be present due to suitable habitat conditions, presence in adjacent waters, and absence of known barriers, though presence has not been observed.
- Barrier Prevents Presence
Species should be present because of suitable habitat conditions, but is not because of artificial barrier.
- Present According to the WDFW WRIA Catalog of Streams (Williams, 1975)

Type of Annotation

- 12 General Note on Fish
- 12 Habitat (fish presence presumed due to habitat)
- 12 Barrier (man-made or natural)
- 12 Outplant Location
- 12 Juvenile
- 12 Spawning
- 12 Present According to WRIA Catalog (1975)

TECHNICAL DRAFT

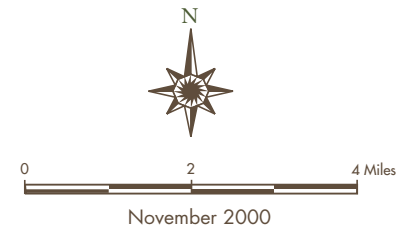
This map depicts the known freshwater distribution of cutthroat salmon (*Oncorhynchus clarki*) for Water Resource Inventory Area (WRIA) 9. The depicted limits of known freshwater distribution of cutthroat salmon are based upon the collective personal knowledge of participants in the WRIA 9 mapping project and data they gathered from published and unpublished databases.

This map may underestimate or overestimate the actual distribution of cutthroat salmon. Also, this map may inaccurately depict the location of water bodies. For example, some water bodies may be incorrectly located on this map, or may not be depicted on this map at all. All users of this map should seek the assistance of qualified professionals such as surveyors, hydrologists, or fishery biologists as needed to ensure that such users possess complete, precise, and up to date information on freshwater cutthroat salmon distribution and water body location.

The information depicted on this map is current as of May 2000. This map may be revised at any time. Although the WRIA 9 Technical Committee intends to revise this map on an annual basis, the WRIA 9 Technical Committee cannot and does not guarantee that this map will be revised on an annual basis or at any other interval.

NO EXPRESS OR IMPLIED WARRANTIES; NO WARRANTY OF MERCHANTABILITY; NO WARRANTY OF FITNESS FOR A PARTICULAR PURPOSE.

There are not express or implied warranties for this map, the information it depicts, the data on which it is based, or any service furnished herein. There is no warranty of merchantability for this map's accuracy or its depiction of cutthroat salmon distribution or water body location. This map is not warranted as fit for a particular purpose.



File Name:
0011 CUTTHROATdistroMIDDLE.eps WGC.jp

Produced by:
GIS & Visual Communications Unit, WLR
King County Dept. of Natural Resources

Sources:
1997 KC/DOE Hydrography Project,
1990 KC Wetlands Inventory,
KC Standard WRIA & Subbasin
Boundaries, WRIA 9 Fish Distribution
Workshops 1999/2000.

