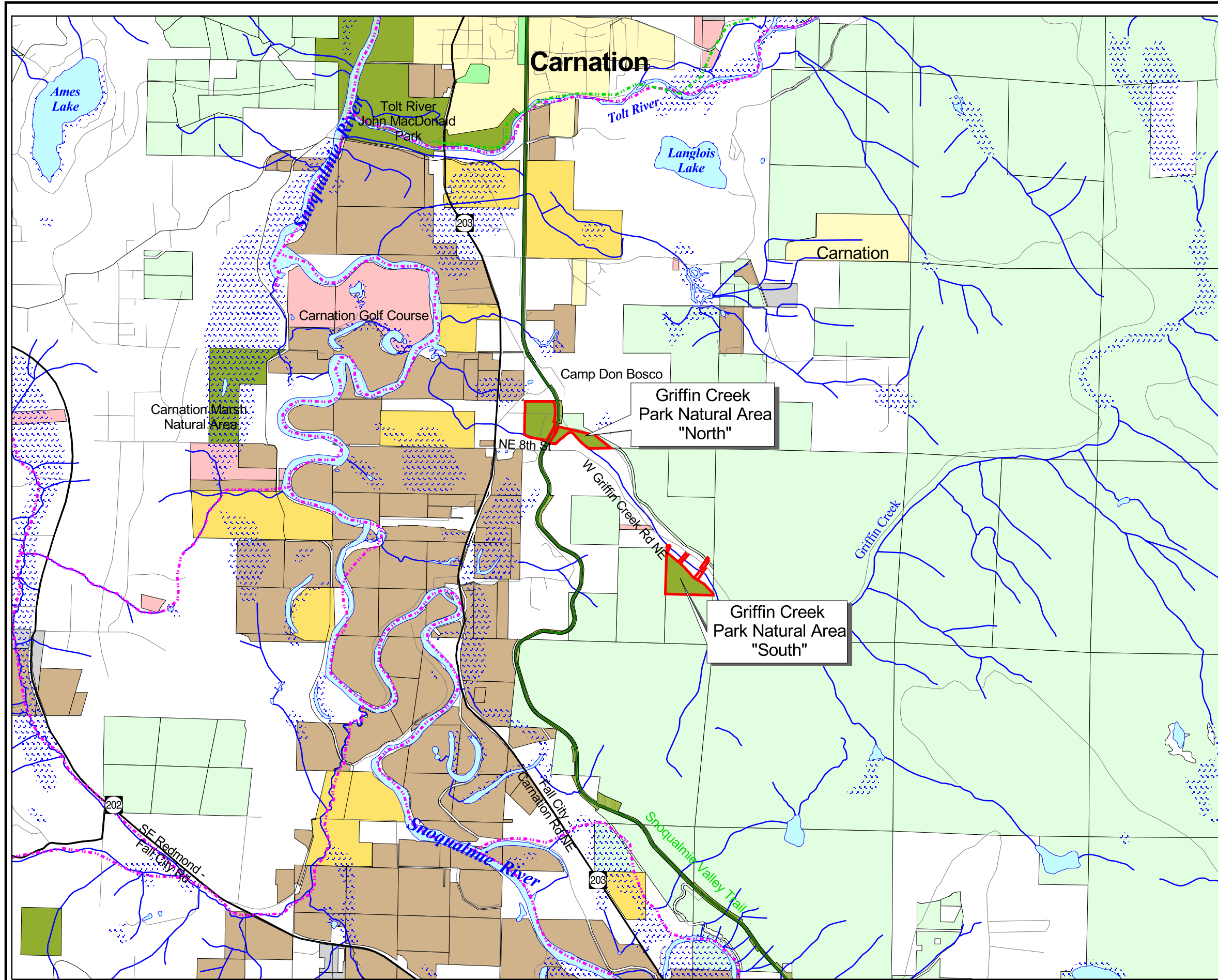


# Figure 2

## Griffin Creek Park Natural Area

### Region / Location



- King County Parks
  - City Parks
  - Incorporated areas
- Current Use Taxation:
- Agriculture
  - Forest
  - Open space
  - Timber
  - Farm Preservation properties

- Regional Trails
- Proposed Regional Trails
- Wildlife Habitat Corridors
- Highway
- Streets

- Hydrologic features:
- Marsh, wetland, swamp or bog
  - Lake or pond
  - Rivers, streams, tributaries



Map produced by the GIS staff of the King County GIS Technical Resource Center (TRC). TRC disclaims any warranty for use of this digital product beyond that for which it was designed. Neither this digital product, nor any portion thereof may be reproduced in any form or by any means without the expressed written authorization of TRC. This document includes data copyrighted by the Kroll Map Company and is being used with their permission. Use is restricted.

