

CONFRONTING CLIMATE CHANGE

WHAT IS KING COUNTY GOVERNMENT DOING ABOUT CLIMATE CHANGE?

KING COUNTY IS COMMITTED TO AMBITIOUS CLIMATE ACTION THAT IS FOCUSED ON:



REDUCING CARBON POLLUTION: RECENT ACCOMPLISHMENTS

TRANSIT

In 2016, the Puget Sound Metro area had the highest rate of increase in transit ridership among the 100 largest metro areas in the country.



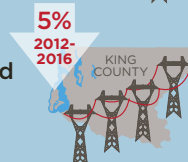
PASSENGER BOARDINGS ON METRO TRANSIT IN 2016

ENERGY EFFICIENCY AND GREEN BUILDING

- King County has reduced energy use in its buildings by 4% since 2014.



- Countywide, energy use in buildings decreased 5% between 2012 and 2016.



SMART GROWTH, FORESTS, FARMS

Every year since 2011, at least 97% of new growth and development has occurred in cities and urban areas, reducing sprawl and transportation emissions.



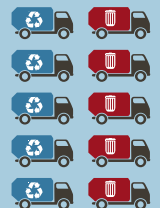
CLEAN ENERGY FUTURE

King County has committed to purchasing clean wind electricity to power nearly all its buildings and facilities in PSE service territory beginning in 2019, reducing direct greenhouse gas emissions from energy by 20%.



WASTE PREVENTION AND RECYCLING

More than half of all materials disposed of in King County are now recycled. Additionally, King County purchases 100% recycled content paper and has reduced consumption by 25%.



REDUCING CARBON POLLUTION: UP NEXT

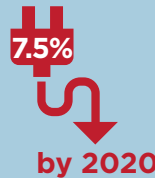
TRANSIT

- Metro Transit will acquire at least 120 all electric zero-emission buses by the end of 2020 and prioritize deployment to communities most vulnerable to air pollution.
- King County will convert the entire bus fleet to zero emissions technology by as soon as 2034.



ENERGY EFFICIENCY AND GREEN BUILDING

- Develop at least 10 net zero energy or Living Building Challenge government sponsored green building projects by 2020.
- Partner with cities and the construction community to update energy and green building development codes.
- Reduce energy use in County facilities by 7.5% by 2020, compared to 2014.



SMART GROWTH, FORESTS, FARMS

- Permanently conserve remaining high-priority farm, forest, and other open spaces throughout King County within 30 years.
- Plant at least one million trees in King County in cooperation with public, private and community partners.



1,000,000
TREES

CLEAN ENERGY FUTURE

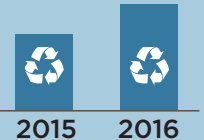
In partnership with the King County-Cities Climate Collaboration, the utilities, and others, research and develop a plan to achieve a countywide 90% renewable electricity target.



WASTE PREVENTION AND RECYCLING

Continue to increase recycling towards a 70% target, including by implementing a separation requirement for cardboard, metal, and yard and wood waste at King County Transfer Stations.

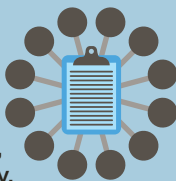
MATERIALS RECYCLED AT TRANSFER STATIONS INCREASED BY 40%



PREPARING FOR CLIMATE IMPACTS

RESILIENT COUNTY OPERATIONS, FACILITIES

King County is planning for climate change impacts on wastewater, stormwater, transportation, emergency management, public health, flood risk reduction, and salmon recovery.



STRENGTHENING REGIONAL RESILIENCE

King County is working with local cities, organizations, communities and partners to improve regional coordination on climate change preparedness.



ENHANCING REGIONAL UNDERSTANDING

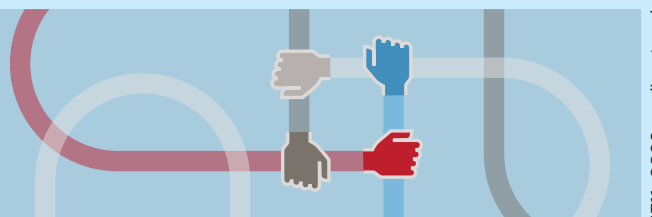
King County is partnering with researchers, local communities, state agencies, and others to address key information gaps related to climate preparedness goals.



ENGAGING COMMUNITIES AND PARTNERS

WORKING TOWARDS EQUITABLE OUTCOMES

King County is building strategic partnerships to ensure that County actions on climate change reflect the needs, priorities, and solutions of communities who are most disproportionately impacted by climate change.



Learn more about what King County is doing to confront climate change at kingcounty.gov/climate
For detailed source information, go to: kingcounty.gov/exec/climatechange/sources