



King County

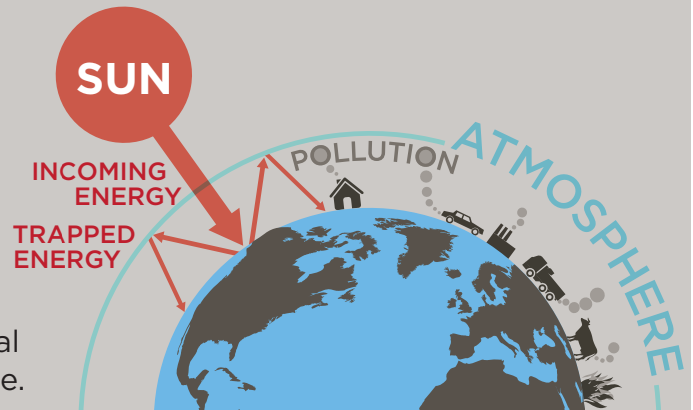
CLIMATE ACTION
Clean Future. Strong Communities.

WHAT IS CLIMATE CHANGE?

WHAT'S THE PROBLEM?

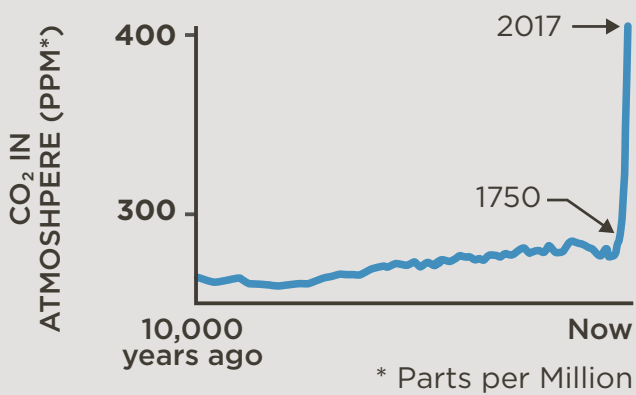
Greenhouse gases (GHG) are gases in the atmosphere that trap heat. Some of the most important GHGs are carbon dioxide (CO₂), methane (CH₄), and nitrous oxide (N₂O).

Human activities, particularly those that involve burning fossil fuels, are putting excess GHGs in the earth's atmosphere. This imbalance is causing global temperatures to rise and ocean chemistry to change.

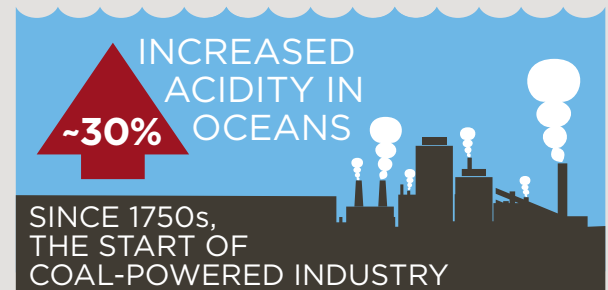


WHAT IS HAPPENING ON A GLOBAL SCALE?

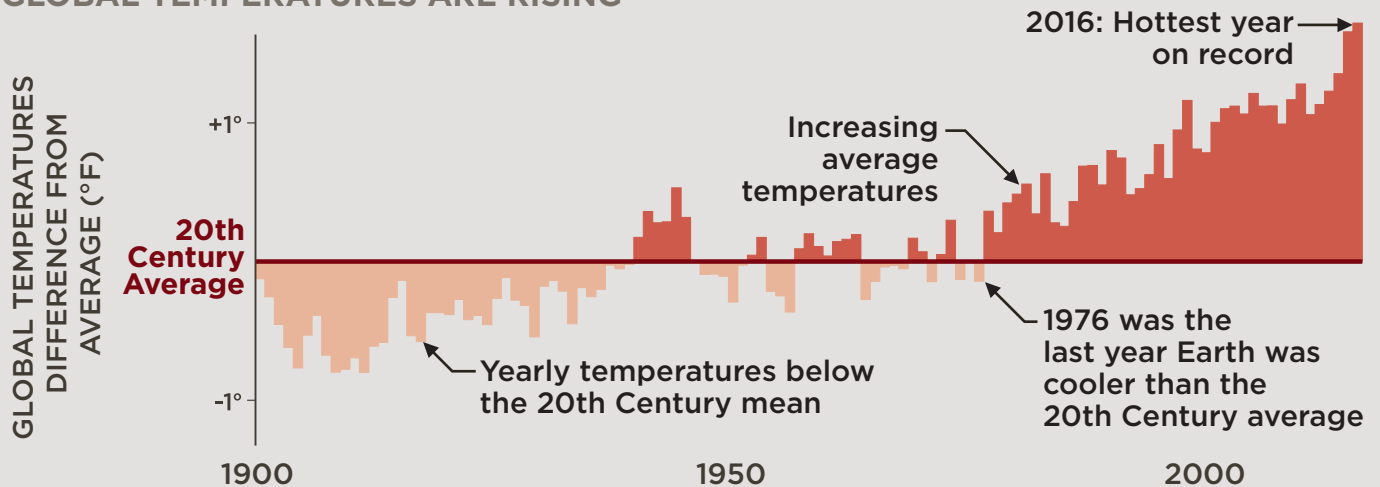
CO₂ LEVELS ARE RAPIDLY INCREASING



RISING CO₂ LEVELS ARE CHANGING THE CHEMISTRY OF THE OCEANS, HARMING MARINE LIFE AND RESOURCES



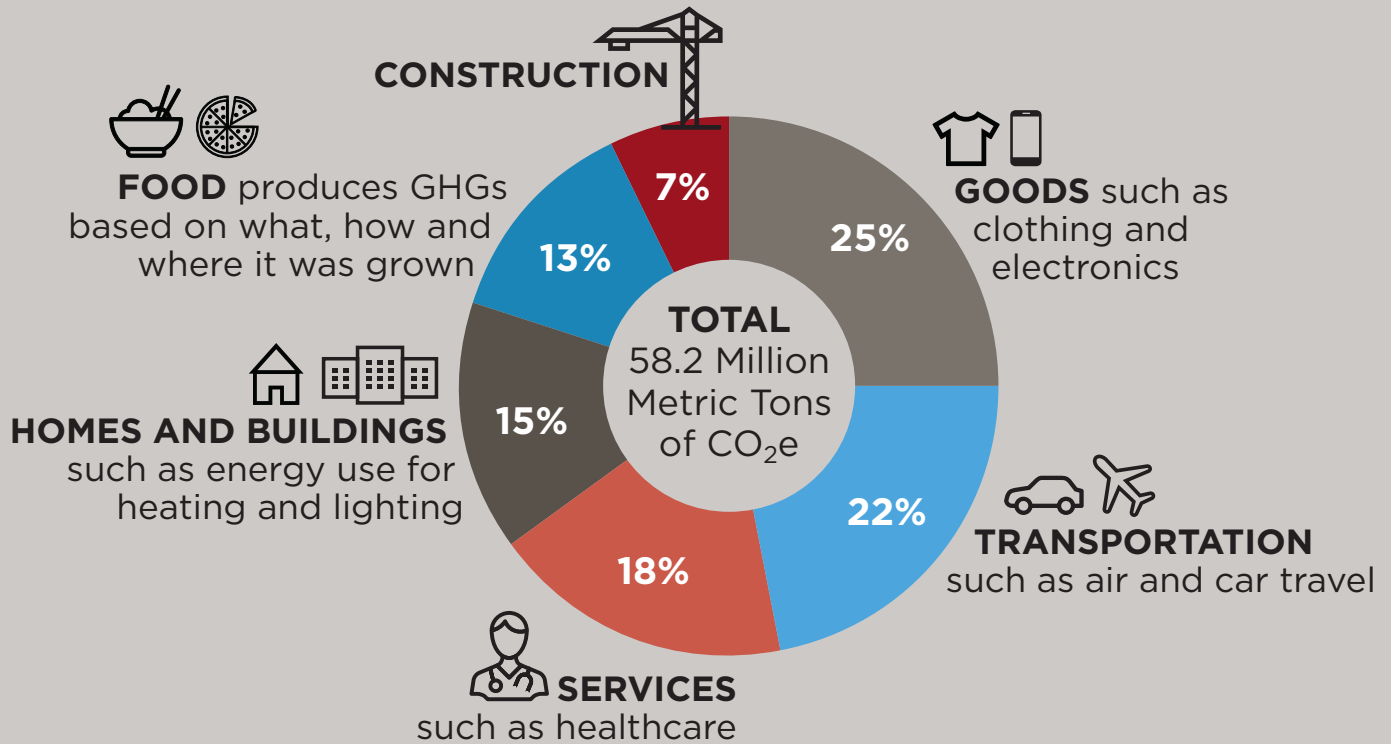
GLOBAL TEMPERATURES ARE RISING





WHERE DO GREENHOUSE GASES (GHG) COME FROM IN KING COUNTY

Most of the GHGs emitted in King County come from transportation and energy use. Purchased goods and services also have GHG emissions associated with them before they reach the consumer. The chart accounts for all GHGs created from goods and services, from production, to transportation, to sale, usage and disposal.



Note: This chart shows GHGs associated with all residential, business and government spending and consumption based on data from 2015.



WHAT CHANGES HAVE WE SEEN IN OUR REGION?

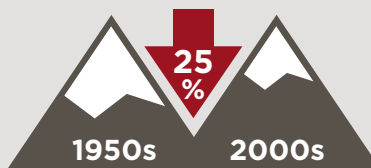
INCREASED HEAT

Average annual air temperature in the Puget Sound region increased +1.3°F between 1895 and 2014.



LESS SNOW

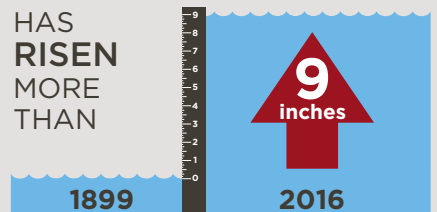
AVERAGE CASCADE SNOWPACK



RISING SEA LEVEL

PUGET SOUND

HAS RISEN MORE THAN



1902_9320w_what_is_climate_change.ai