



**FACT SHEET**

# City of Tukwila Tree Canopy Focus

**Project Summary:**

**Adopted regulations**

- Prohibiting tree removal or if removal is approved, requiring up to a 3:1 replacement ratio based upon canopy loss. (2018)
- Requiring more robust landscaping in industrial, commercial, and multi-family areas (2017)

**Public Planting Program**

- In 2017, 3,577 trees and shrubs were planted on Tukwila public property

**Results: 2018 Update of 2012 tree canopy assessment**

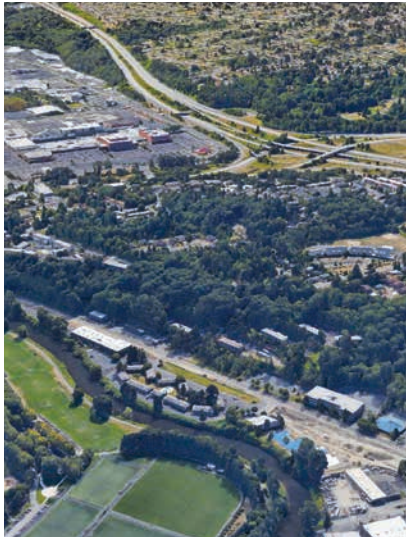
Six year assessment to measure attainment of established goals and success of strategies

Prohibition of property clearing without an approved development permit and of removal of 6” diameter trees on single family lots

**Detailed Description:** This supplements public, nonprofit and volunteer tree planting programs that are targeting a total tree canopy of 29% by 2034. Tukwila’s 2012 tree canopy inventory is a range of 9% in industrial areas to 51% in single family neighborhoods.

The regulations started with strong and clear Comprehensive Plan goals and policies, a Tree Environment Committee made up of citizens and Council members, and took three years from concept to adoption.

Tukwila Hill Tree Canopy



These projects support the Joint County – City Climate Commitments of Forestry and Farming. Tukwila has created a program and regulations meant to retain the City’s urban forest as the City urbanizes and provides a center for the region’s housing and jobs.

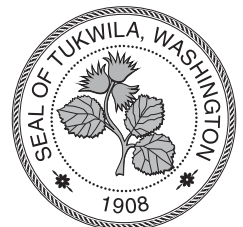
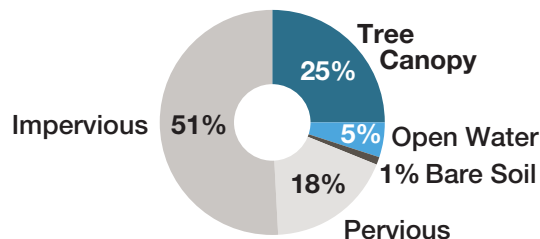
**How much are Tukwila’s Trees Worth?**

Sequestered carbon	2,300 tons/year*	\$48k
Carbon Monoxide (CO)	4.3 tons/year	\$4k
Nitrogen Dioxide (NO <sub>2</sub> )	10 tons/year	\$89k
Ozone (O <sub>3</sub> )	4.3 tons/year	\$240k
Sulfur Dioxide (SO <sub>2</sub> )	8.5 tons/year	\$18k
Particulate Matter	15.7 tons/year	\$94k

**YEARLY BENEFIT \$493K**

\* emissions are estimates

**Tukwila 2012 Land Cover**



*Through focused, coordinated action, we will maximize the impact of our individual and shared efforts.*