

Our Planet, R Choices

See the assembly, sign up for workshops, get assistance! **FREE**

• Call 206-583-0655 or e-mail workshops@triangleassociates.com.



Here's what teachers say about the King County assembly programs:

"Every year I'm more amazed with the way the assembly grabs the attention of students to deliver an important message. Keep up the great work!" — Fourth-grade teacher, Snoqualmie Elementary

"Great assembly—the kids LOVED it and got a lot out of it! They are still singing the "R choices" jingle!"
— First-grade teacher, Alcott Elementary

"The team presented in a way that was entertaining as well as effective. They are amazing! Every time I've seen them, I am impressed!" — Second grade teacher, Camelot Elementary

"Love the energy! Great props. The kids were totally engaged and excited. The game at the end was fun and actors are fabulous."
— Fifth-grade teacher, Endeavor Elementary

For more information on these and other programs, visit your.kingcounty.gov/solidwaste/elementaryschool/index.asp. **Request our Programs for Educators Directory**, an annotated list of programs and services for teachers offered by King County. Call 206-296-4353, TTY Relay: 711

Alternative Formats On Request
206-296-4466 | TTY Relay: 711
1-800-325-6165 ext. 6-4466

Printed on recycled paper – Aug11DK

PRSRST STD
U.S. POSTAGE
PAID
SEATTLE, WA
PERMIT #14146

Department of Natural Resources and Parks
Solid Waste Division
King Street Center, Suite 701
201 S. Jackson St.
Seattle, WA 98104-3855
King County



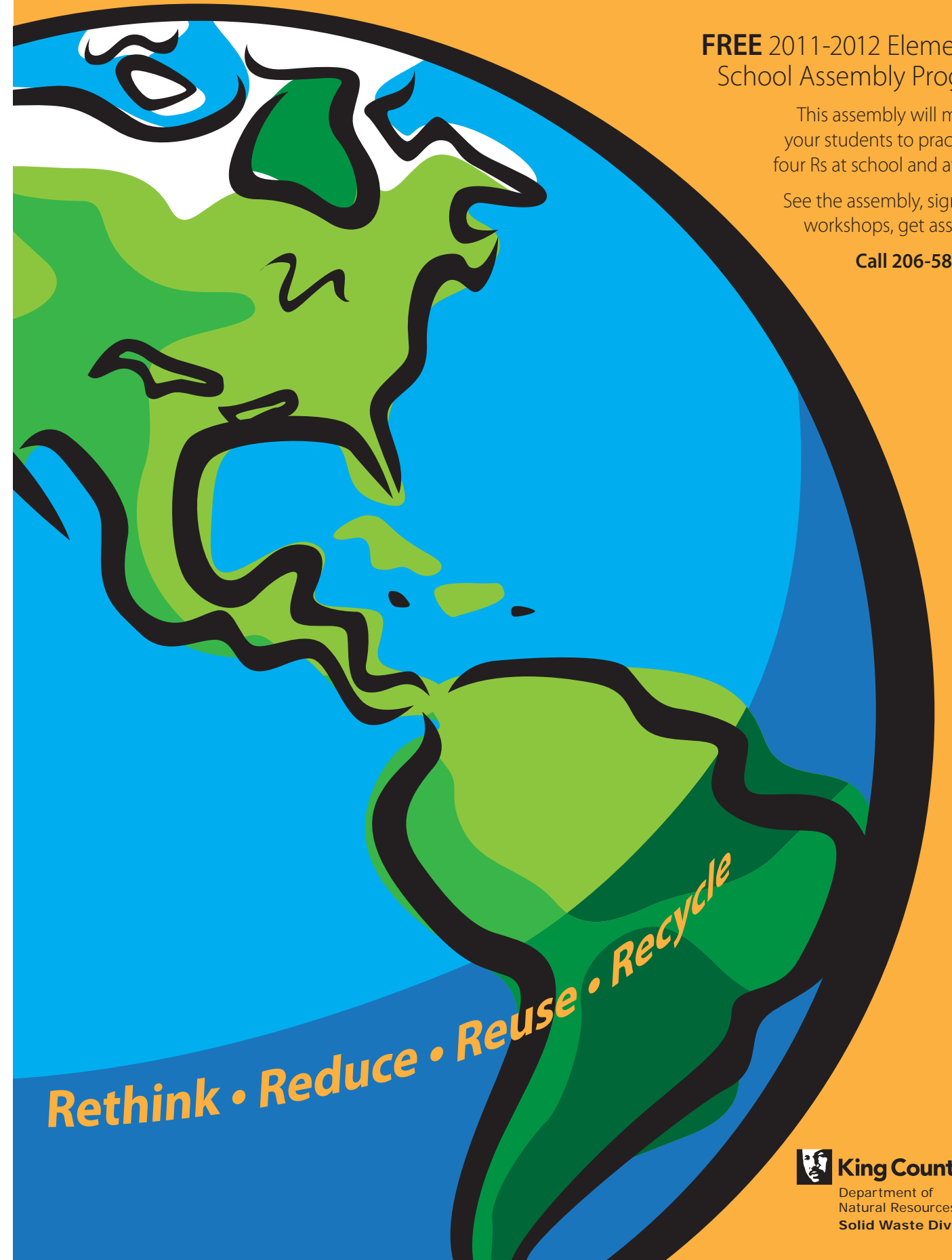
Our Planet, R Choices

FREE 2011-2012 Elementary School Assembly Program!

This assembly will motivate your students to practice the four Rs at school and at home.

See the assembly, sign up for workshops, get assistance!

Call 206-583-0655 today!



King County
Department of
Natural Resources and Parks
Solid Waste Division

Step 1 – Schedule the assembly

“Our Planet, R Choices”

This new assembly for grades K-6 opens on the set of a science-themed talk show where the episode of the day focuses on waste both at school and at home. Students are then transported “on location” where they learn about where waste goes in King County and how throwing things away is a dead end for natural resources. Through the use of fun props, entertaining dialogue, role play, and a game show, students learn how each of us can conserve natural resources through reducing, reusing, and recycling. Students examine real-life situations and learn to navigate their everyday choices in order to step lightly on the planet at home and at school.

The assembly is a great way to kick off the school year and motivate everyone to participate in school efforts to reduce waste and recycle.

The assembly is available September 2011 through December 2011. Sign up now. Registration is limited!

Note: Schools with over 350 students should plan on two shows: one primary and one intermediate, each 45 minutes long. Please allow 15 minutes between shows. Schools must have at least 75 students to receive the assembly. King County schools outside the city of Seattle are eligible for the program.

Step 2 – Schedule workshops with the assembly

Classroom Workshops for Grades 1-6

Schools receiving the assembly may schedule up to three classroom workshops for a day following the assembly. Workshops reinforce the assembly messages, engage your students, and inspire their ideas for a healthier environment. You can mix and match up to three workshops that either build on assembly lessons, or prepare classes to take on an action project to reduce waste and protect habitat (Green Team Workshops).

All workshops are tied to essential learnings with an emphasis on science and communication.

For a list of the related EALRs, visit your.kingcounty.gov/solidwaste/elementaryschool/workshops.asp or call 206-583-0655.

Step 3 – Get Green Team assistance

Information and Assistance for Green Teams

A Green Team is a group of students that takes on environmental projects to make a difference in their class, school or community. In addition to the Green Team workshops included with the assembly, King County provides FREE materials and ongoing assistance on projects of your choice throughout the school year. Please contact a Green Team Specialist at 206-583-0655 or greenteam@triangleassociates.com.

Note: Classrooms whose schools do not sign up for the assembly are still eligible for Green Team assistance.

Call Triangle Associates at **206-583-0655**
or e-mail workshops@triangleassociates.com
to sign your school up for this **FREE** program
in the 2011-2012 school year.



Select up to 3 workshops – you can mix and match! Assembly workshops are 45 minutes; project-oriented Green Team workshops take 60 minutes.

PRIMARY: Grades 1-3

Healthy Habitat – Explore the basic components of habitat—food, water, shelter, and space—through discussion and examples. Students play a game that introduces them to some native Northwest animals, the types of habitat they need, and simple ways to protect them. Students then make the connection between their actions and healthy habitat.

Rethink and Reuse – This hands-on workshop teaches students how using something again can make a difference for the environment. After a quick-paced activity that provides real-life examples of how to substitute disposable items with reusables, the class engages in a reuse project that demonstrates how reusing can be both functional and fun. Students may create envelopes, magnets, or twig notebook pads.

“I just wanted to say THANK YOU for coming to my classroom and teaching the kids all about Garbology. The kids really enjoyed your presentation and learned so much. I think it is so important to educate the future generation about how important it is to recycle and reuse and really re-think what we are throwing away and how we can reuse items.”

—Fourth-grade teacher, Fall City Elementary

INTERMEDIATE: Grades 3-6

Earth Smart Choices: Learn to Be Waste-Free – Students examine popular lunch and snack products to learn about packaging and how their consumer habits affect the environment. They use math skills while learning to recognize packaging that is wasteful and comparing it with packaging that is reusable, recyclable and makes less waste. At the end of the workshop, students participate in a waste-free challenge.

Garbology – What do a 20-year-old hot dog and a newspaper from 1956 have in common? They can both be found in our local landfill. What happens to the things we throw in the trash? With inquiry-based activities, students will “dig into” a landfill, the simple science of decomposition, and the importance of the four Rs.

Habitat Stewardship – This more advanced habitat workshop introduces the concept of “stewardship,” providing an in-depth look at the necessary components of habitat and the roles we play in keeping it healthy. Students examine their personal choices and their impacts on the environment as they learn about several native Northwest animals and their habitats.

Recycling Leadership – For classes ready to be leaders within their school, this workshop goes beyond basic recycling. Through hands-on activities and games, students learn proper sorting of recyclables, discuss recycling problems within the school, and brainstorm ways to address them through research, skits, posters, intercom announcements and other strategies. (Green Team workshop– 1 hour)

ALL GRADES

Environmental Leadership – For students ready to become habitat stewards, this workshop assists in planning a project such as picking up litter, organizing a waste-free lunch, adopting a garden, or other stewardship project of their choice. Students may use writing, drama, or art skills to develop letters, posters, announcements, skits, or other techniques to share their findings with the larger community and encourage conservation behaviors. (Green Team workshop– 1 hour)

Recycling Basics and Beyond – Understand the concepts of waste reduction, reuse, and recycling at home and in school. Students sort recyclables, play a fast-paced quiz game, and learn how contamination and improper sorting can be a problem. By the end of the workshop, students have a clear understanding of what can be recycled and what can't. This workshop is tailored to student knowledge and ability.

Worm Bins and Food Composting – Everything you need to know about setting up and maintaining your worm bin is explained. Students learn how composting is a big part of the four Rs and how worm bins cut down on garbage. The presenter brings red wiggler worms to your classroom. All you need to supply are the container and bedding (newspaper and leaves) to start a worm bin. (Green Team workshop–1 hour)

