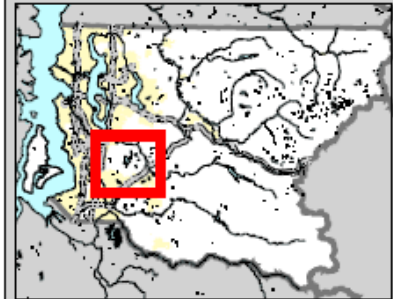


### Locator Map



### Legend

- Streams and Rivers
- 2005 Urban Growth Boundary
- Charter Amendment Parcels
- King County Parks Property Interests
- Municipal Boundaries



February 26, 2008



The information included on this map has been compiled by King County staff from a variety of sources and is subject to change without notice. King County makes no representations or warranties, express or implied, as to accuracy, completeness, timeliness, or rights to the use of such information. This document is not intended for use as a survey product. King County shall not be liable for any general, special, indirect, incidental, or consequential damages including, but not limited to, lost revenues or lost profits resulting from the use or misuse of the information contained on this map. Any sale of this map or information on this map is prohibited except by written permission of King County.



King County

File Name: I:\mkt\locator\loc\mkt\charter amendment\2007\charter amendment\gk\charter amendment.apr

# Soos Creek 140th Open Space

## Charter Amendment Information

# Soos Creek 140<sup>th</sup> Open Space

- **Council District:** 9
- **Acreage Included:** 16 acres – fee
- **Acreage Excluded:** 0 acres
- **Year purchased:** 2002
- **Funding:** dedication
- **Habitat features:** stream, meadow
- **Recreational features:** trails
- **Terms of use:** open space, passive recreation

# Soos Creek 140<sup>th</sup> Open Space

