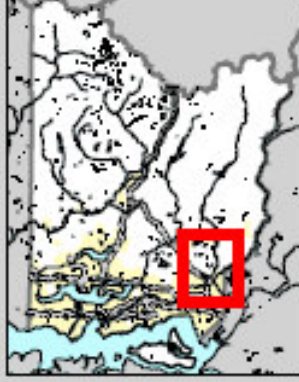


Locator Map



Legend

- Porter Levee Natural Area
- 2005 Urban Growth Boundary Streams and Rivers
- Charter Amendment Parcels
- King County Parks Property Interests
- Municipal Boundaries
- Publicly Owned Lands



February 26, 2009

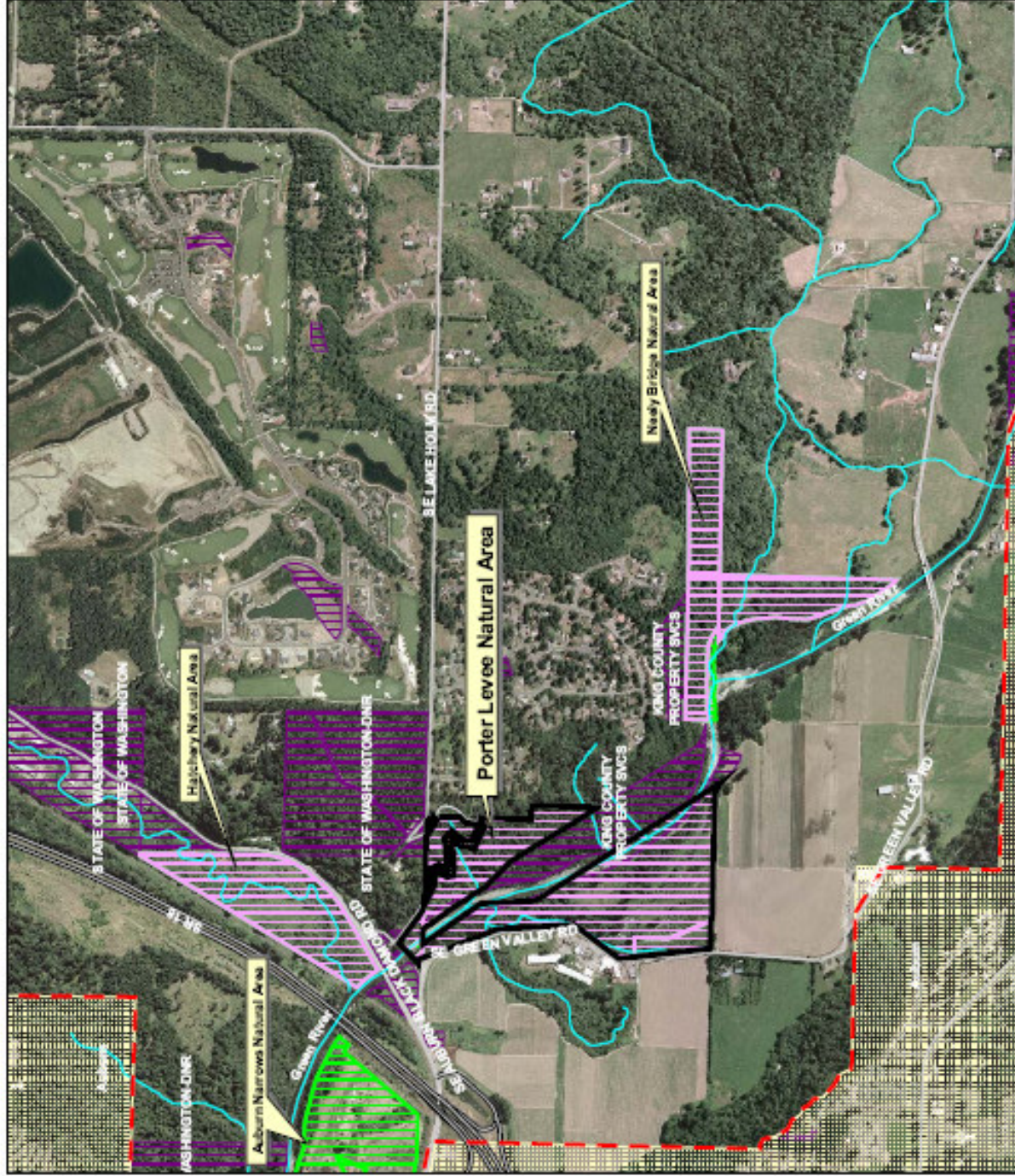
200 0 200 400 600 800 1000 Feet

This information included on this map has been compiled by King County staff from a variety of sources and is subject to change without notice. King County may have no representation or warranty as to the accuracy or applicability of this information, or the results of its use. King County shall not be liable for any general, special, incidental, or consequential damages, including, but not limited to, lost revenues or lost profits resulting from the use or misuse of the information contained on this map. Any sale of this map or information on this map is prohibited except by written permission of King County.



King County

File Name: I:\Health\Levee\Levee\Information\ amendment 2007\...
 Date: 2/26/09 10:00 AM



Porter Levee Natural Area Charter Amendment Information

Porter Levee Natural Area

- **Council District:** 7
- **Acreage Included:** 56 acres – fee
- **Acreage Excluded:** 0 acres
- **Year purchased:** 1998-9
- **Funding:** used 1989 open space bond, Elliott Bay/Duwamish Panel
- **Habitat features:** Green River frontage, floodplain forest, meadows
- **Recreational features:** trails
- **Terms of use:** passive recreation, open space

Porter Levee Natural Area

