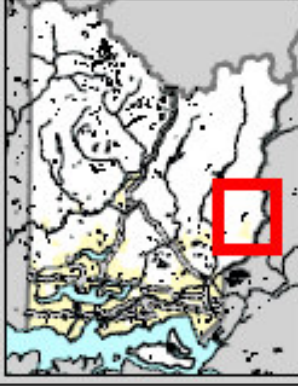


Locator Map



Legend

- 2005 Urban Growth Boundary
- Streams and Rivers
- Charter Amendment Parcels
- King County Parks Property Intervals
- Municipal Boundaries



February 26, 2008

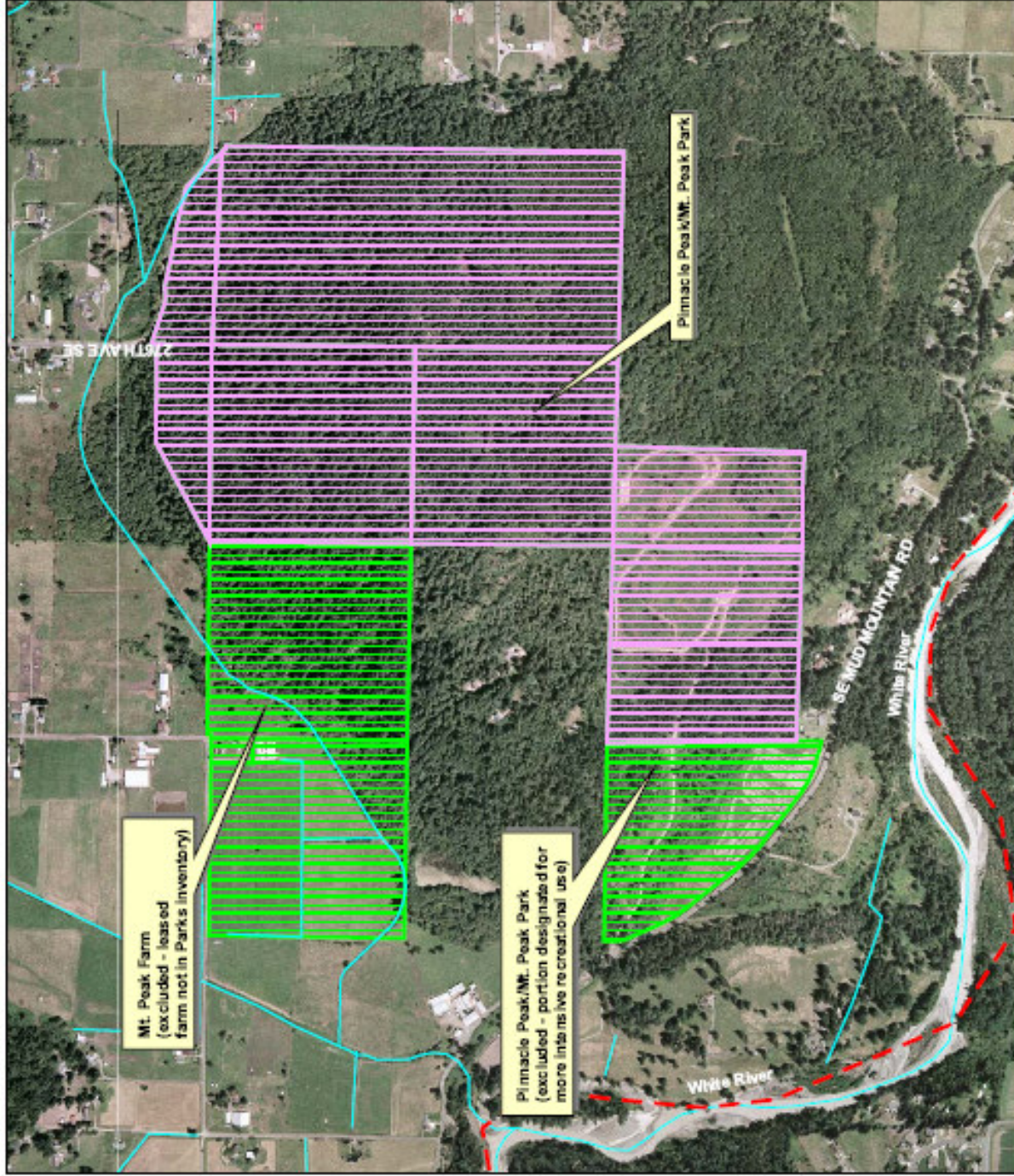


This information included on this map has been compiled by King County staff from a variety of sources and is subject to change without notice. King County makes no representation or warranty, express or implied, as to accuracy, completeness, timeliness, or rights to the use of such information. King County shall not be liable for any general, special, or consequential damages, including, but not limited to, loss of revenue or other profits resulting from the use of this information. The information on this map is provided for informational purposes only. Any sale of this map or information on this map is prohibited except by written permission of King County.



King County

File Name: \\s:\data\gis\land_use\pinnacle_peak\amendment_0807\...
 Release information provided for amendment 08



Mt. Peak Farm
 (excluded - leased farm not in Park's inventory)

Pinnacle Peak/Mt. Peak Park
 (excluded - portion designated for more intensive recreational use)

Pinnacle Peak/Mt. Peak Park

Pinnacle Peak/Mt. Peak Park Charter Amendment Information

Pinnacle Peak Park

- **Council District:** 9
- **Acreage Included:** 228 acres – fee
- **Acreage Excluded:** 29 acres
- **Year purchased:** 1988-2008
- **Funding:** used CFT, REET, WADNR trust land transfer
- **Habitat features:** Mt Peak/Pinnacle Peak; forest
- **Recreational features:** trails
- **Terms of use:** passive recreation, open space

Pinnacle Peak Park

