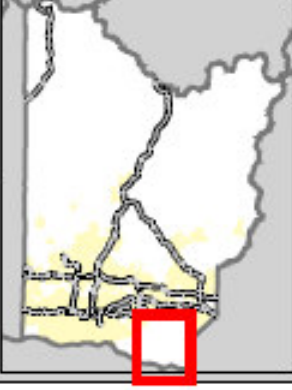


Locator Map



Legend

- Charter Amendment Parcels
- King County Parks Property Interests
- Streams and Rivers
- Municipal Boundaries
- Publicly Owned Lands
- 2035 Urban Growth Boundary



April 6, 2009

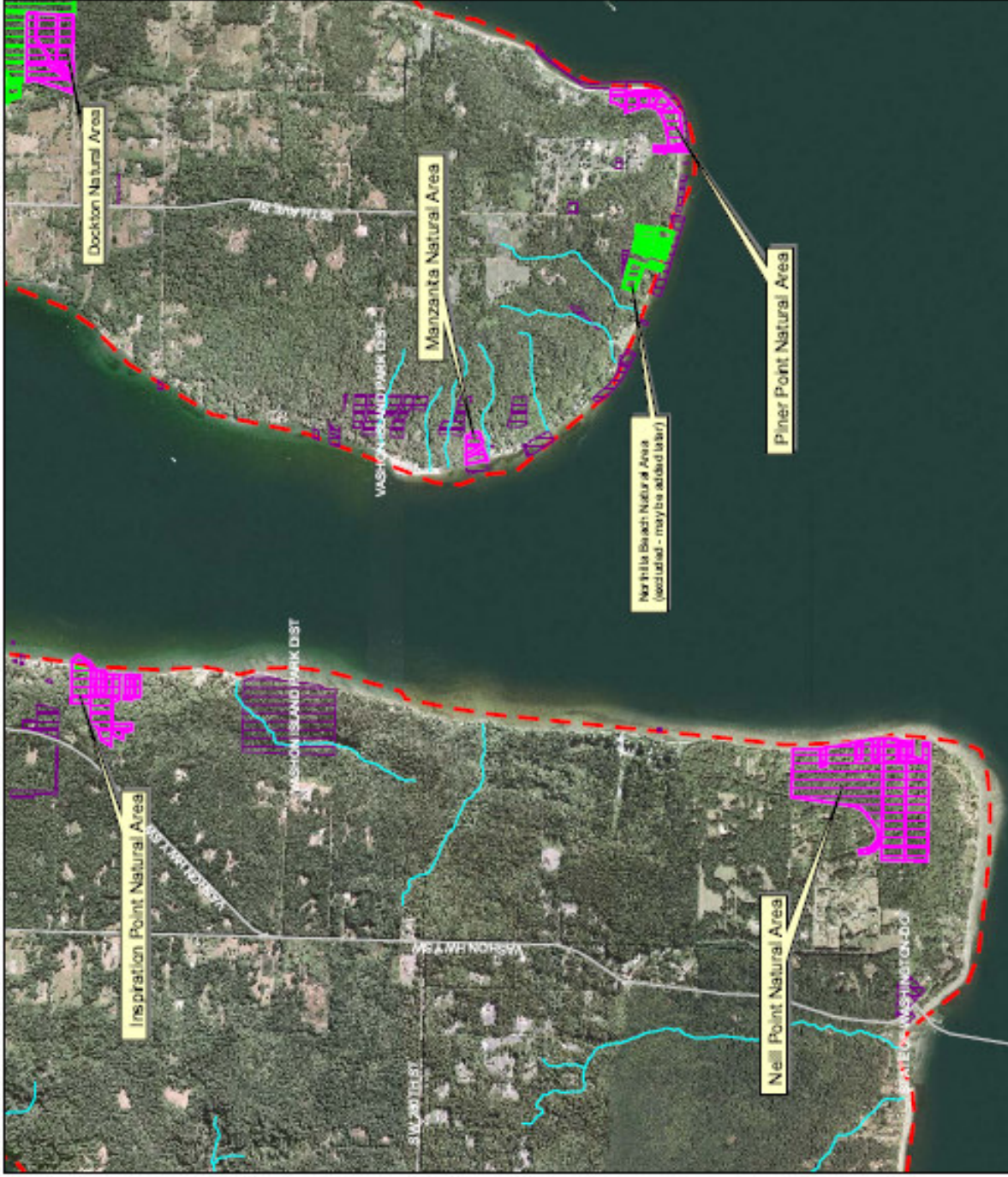
600 0 400 800 1200 1600 2000 Feet

The information included on this map has been compiled by King County staff from a variety of sources and is subject to change without notice. King County makes no representation or warranty, express or implied, as to accuracy, completeness, or timeliness of the information included on this map. This document is not intended for use as a survey product. King County shall not be liable for any general, special, incidental, or consequential damages, including, but not limited to, lost revenues or lost profits resulting from the use or reliance of this information contained on this map. Any sale of this map or information on this map is prohibited except by written permission of King County.



King County

File Name: I:\data\charter\map\piner\amendment_2007_1\charter amendment\piner.naturalarea.apr



Piner Point Natural Area

Charter Amendment Information

Piner Point Natural Area

- **Council District:** 8
- **Acreage Included:** 8 acres – fee
- **Acreage Excluded:** 0 acres
- **Year purchased:** 2005-2008
- **Funding:** used CFT, RCO-SRFB, RDP
- **Habitat features:** shoreline, forest
- **Recreational features:** none
- **Terms of use:** passive recreation, open space

Piner Point Natural Area

