

August 16, 2011

Official Primary and Special Election Ballot
King County, Washington

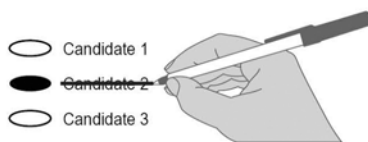
Instructions

Making selections



Use a black ink pen to completely fill in the oval next to your choice.

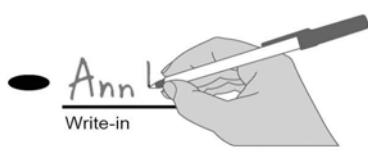
How to correct a mistake



To make a correction, draw a line through the entire measure response or candidate's name.

You then have the option of making another choice by completely filling in another oval.

Optional write-in



To add a candidate, fill in the oval next to the write-in line and print the name on the write-in line.

! Do not cut, tear or damage the ballot.

County

**King County
Proposition No. 1
Veterans and Human Services Levy**

The King County council has passed Ordinance No. 17072 concerning funding for regional veterans, health, and human services. This proposition would replace an expiring levy and fund capital facilities and services that reduce medical costs, homelessness, and criminal justice system involvement with half of proceeds supporting veterans and their families. It would authorize King County to levy an additional property tax of 5 cents per \$1,000 of assessed valuation for collection in 2012 and authorize annual increases by the percentage increase in the consumer price index or 1%, whichever is greater, with a maximum increase of 3%, for the five succeeding years. Should this proposition be:

- APPROVED
- REJECTED

**Court of Appeals, Division No. 1,
District No. 1**

Judge Position No. 2
nonpartisan office
vote for one

- Michael Spearman
- _____
Write-in

City


**City of Federal Way
Council Position No. 3**
nonpartisan office
vote for one

- Mark Koppang
- Roger Flygare
- Susan Honda
- Scott M. Sparling
- _____
Write-in

School

**Federal Way School District No. 210
Director District No. 3**
nonpartisan office
vote for one

- Danny Peterson
- Elizabeth Drake
- Carrie BeSerra
- _____
Write-in

Return your ballot.  **vote by mail**

Sample