

Tolt River Mile 1.1 Levee Setback Project Location Map

Tolt River RM 0.9 - 1.2L

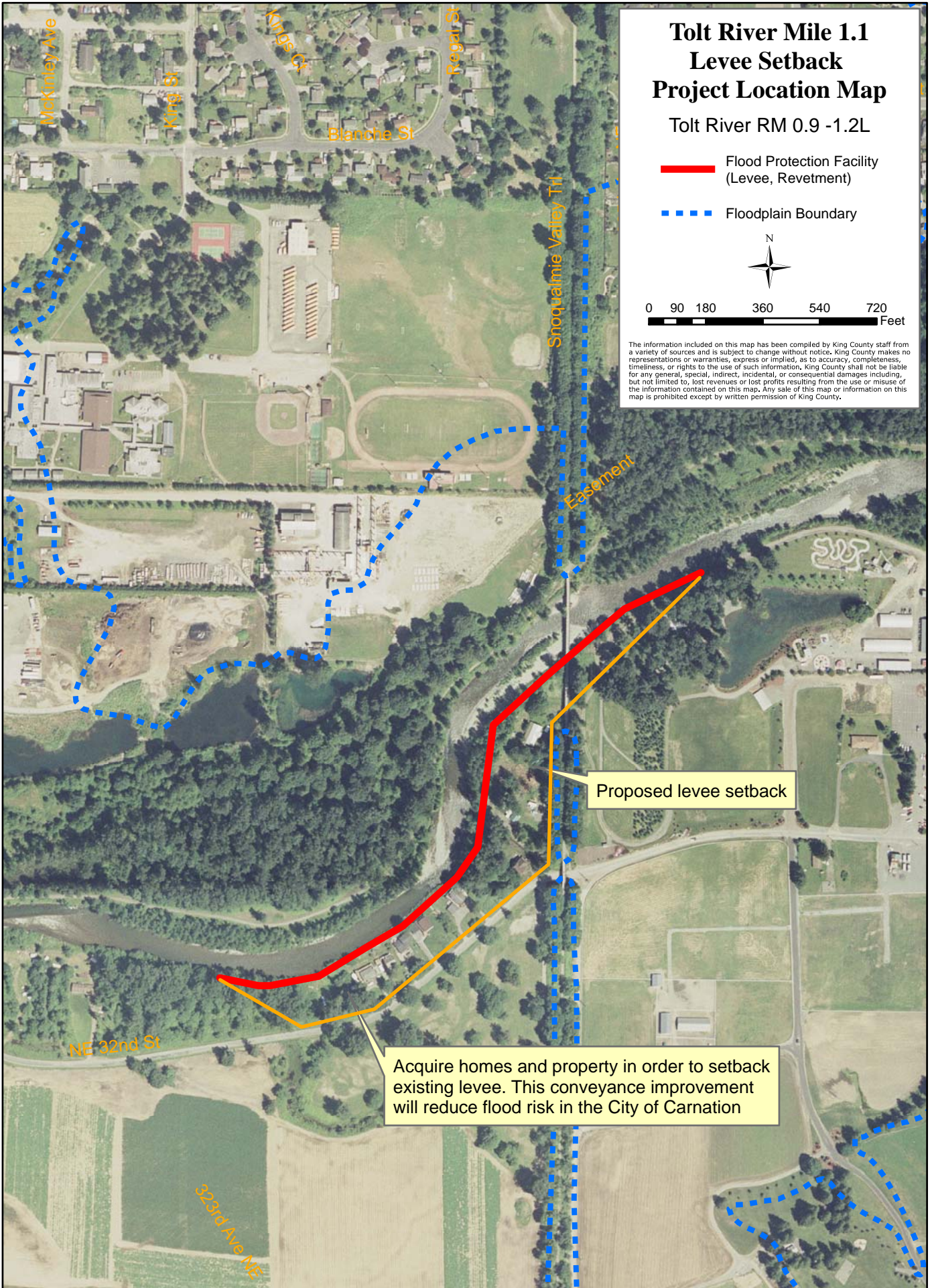
 Flood Protection Facility
(Levee, Retention)

 Floodplain Boundary



0 90 180 360 540 720
Feet

The information included on this map has been compiled by King County staff from a variety of sources and is subject to change without notice. King County makes no representations or warranties, express or implied, as to accuracy, completeness, timeliness, or rights to the use of such information. King County shall not be liable for any general, special, indirect, incidental, or consequential damages including, but not limited to, lost revenues or lost profits resulting from the use or misuse of the information contained on this map. Any sale of this map or information on this map is prohibited except by written permission of King County.



Proposed levee setback

Acquire homes and property in order to setback existing levee. This conveyance improvement will reduce flood risk in the City of Carnation